

Customer Name
Address
City, State, Zip

Dear Name,

Thank you for supporting renewable energy through Rocky Mountain Power's Blue SkySM renewable energy program in 2012.

Your current block purchase is **XX** block(s) per month. Your total support of **XX,XXX** kilowatt-hours of western region wind energy over the past year has had the equivalent environmental benefit of:



Your business, nearly 88,000 customers participating in the Green-e Energy certified Blue Sky program helped support more than 604 million kilowatt-hours of renewable energy over the last year. On the back of this letter, you can see all the ways that Blue Sky customers like you are making a real difference together.

Just for you

Make the most of your Blue Sky participation.

- Share your support with customers! We've enclosed a certificate, commending your 2012 Blue Sky renewable energy support.
- Read the bi-annual *Forecast* newsletter just for Blue Sky customers at rockymountainpower.net/forecast.
- Like us on Facebook and stay connected to Blue Sky at facebook.com/rockymountainpower.bluesky.
- Tour a renewable energy project! Send an email to windtour@rockymountainpower.net or call **1-866-476-9378** ext. 40 for information on 2013's tour.
- **NEW!** Offer a mobile coupon to our growing Blue Sky community (see side panel)

Please feel free to contact us at **1-800-769-3717** with any questions about the program or visit rockymountainpower.net/bluesky.

Sincerely,

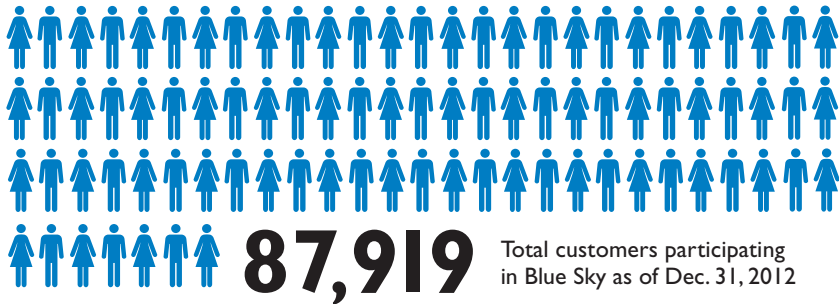
Karen Gilmore
Vice President, Customer Services

Blue Sky is now offering a new benefit to Blue Sky business partners.** Raise visibility for your business by offering coupons exclusively to residential Blue Sky customers through the new Blue Sky mobile coupons presented by Chinook Book.

If you'd like to offer coupons email coupons@rockymountainpower.com or learn more by visiting rockymountainpower.com/coupons.

**Can't remember whether your business is identified as a Blue Sky business partner - go to pacificpower.net/bizpartner to see our list of business partners or call us at 1-800-769-3717.

In 2012, you made a difference with Blue Sky.



Equivalent environmental benefits associated with all 2012 Blue Sky purchases:



377,062 Tons of CO₂ avoided

EQUALS



65,202 Cars off the road



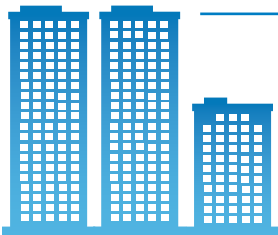
8,865,110 Trees planted

OR



764,178,566 Miles not driven

OR



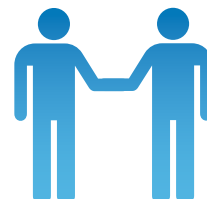
2,557

Number of non-residential customers participating in the Blue Sky program



500

Non-residential customers enrolled in 2012



1,075

Customers enrolled in the Blue Sky business partnership program



22

New community-based renewable energy projects that received support from Blue Sky customers in 2012. These projects are located in the following communities:

Alpine, UT
Cedar City, UT
Erda, UT
Herriman, UT
Lander, WY
Orem, UT

Park City, UT
Preston, ID
Salt Lake City, UT
Saratoga Springs, UT
Syracuse, UT
Tooele, UT

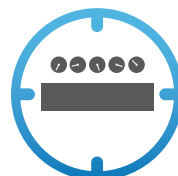


156

Number of community-based renewable energy projects that have received Blue Sky funding since 2006

4,876 kilowatt generation capacity created by the community-based renewable energy projects funded by Blue Sky customers since 2006

kilowatt generation capacity created by the community-based renewable energy projects funded by Blue Sky customers since 2006



Let's turn the answers on.