

PC 4.2

From: Lund, Brian [Brian.Lund@PacifiCorp.com]
Sent: Thursday, February 26, 2004 5:38 PM
To: Johnson, Janet
Subject: West Weber ComCast 400 S 4700 W Violation.doc



West Weber
ComCast 400 S 4700

Hi Janet,

The attached document has the information on an imminent hazard that we need to correct at ComCast Expense. Please get a charge number and then create a FLD order to "Replace open wire sec. with triplex for communications clearance."

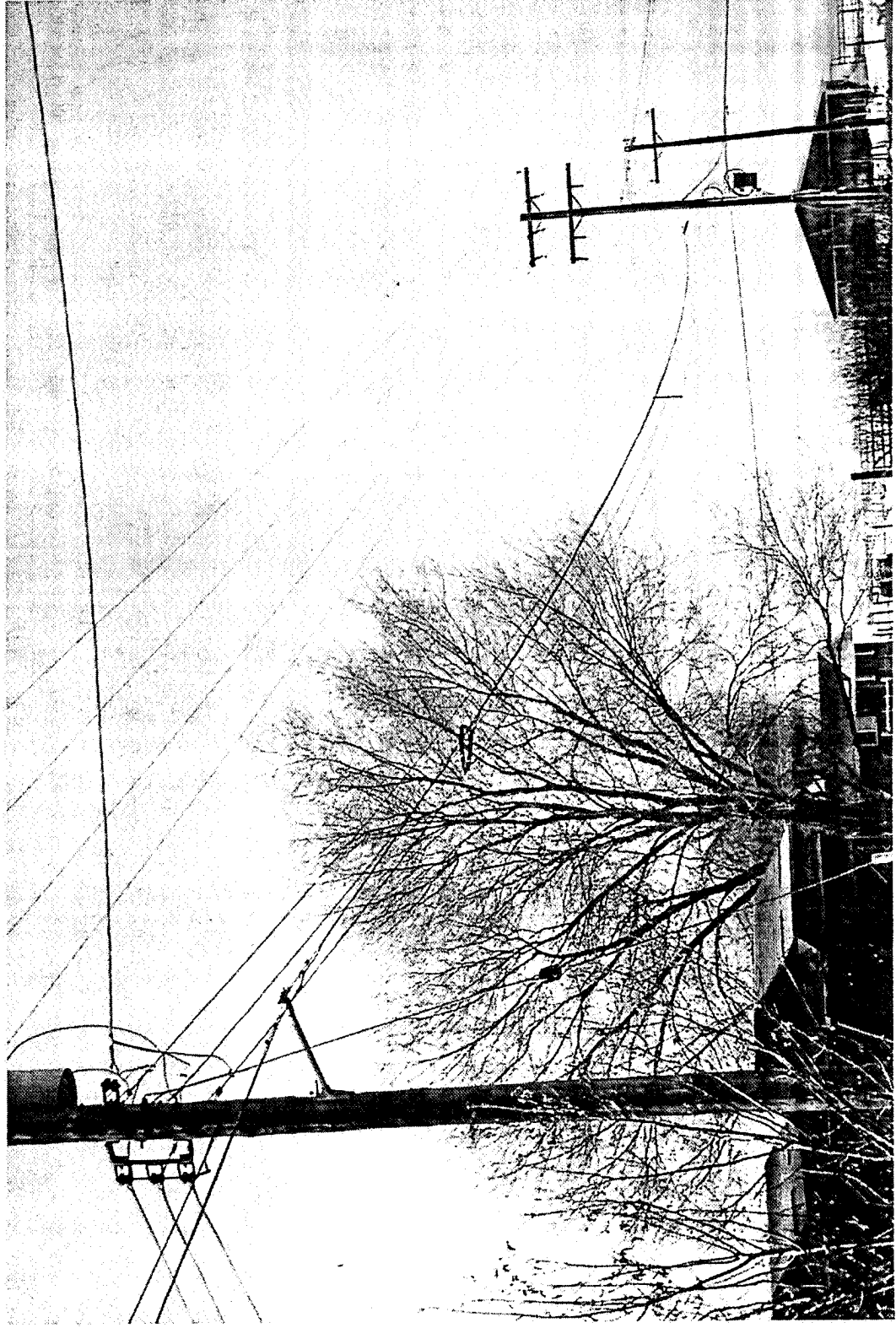
Thanks, let me know if any questions.

Brian...

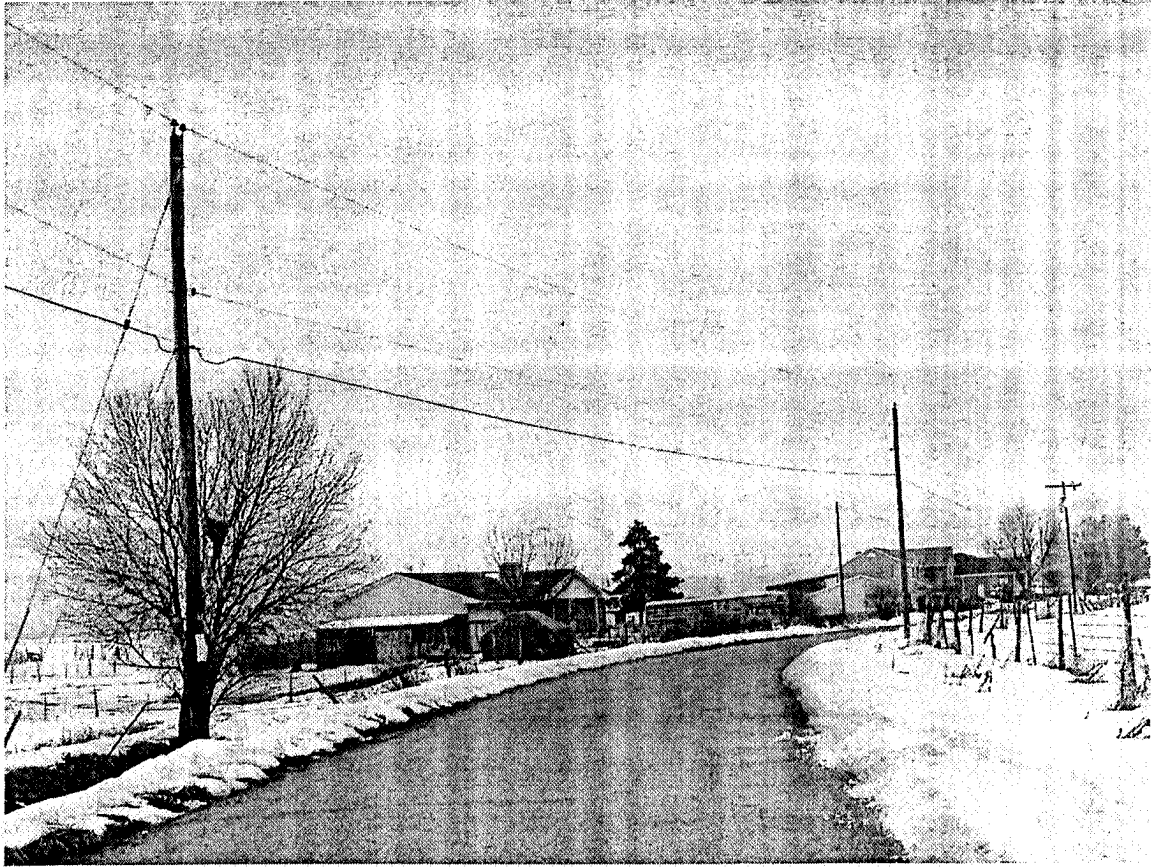
<<West Weber ComCast 400 S 4700 W Violation.doc>>

Pole # 11206002.0 175503 and 175505 on 02/25/2004. 400 S 4700 W, West Weber, UT

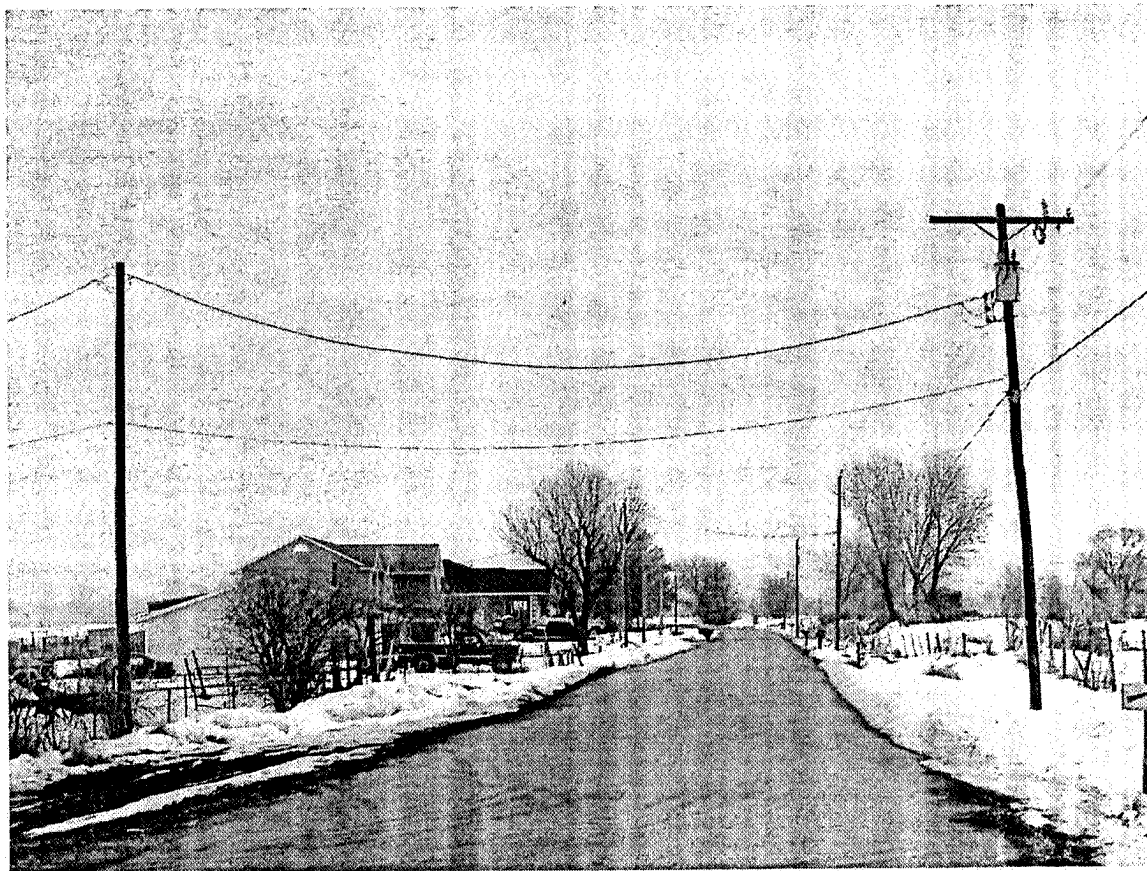
ComCast has placed strand and fiber in violation of NESC clearances and has created a very unsafe condition. A moderate wind will place ComCast in contact with PacifiCorp open wire secondary and energize the ComCast messenger. This eminent hazard will be corrected by PacifiCorp at ComCast expense.



Pole 11206002.0 073803 and 073802 on 950 N @ 5650 W, clearance over roadway does not meet height requirements, 40" violations at both poles. No make ready requested by ComCast.



Pole 11206002.0 073801, 950 N @ 5600 W, clearance over roadway does not meet height requirements. No make ready requested. Cannot maintain height over roadway, mid-span clearance, and 40" at pole without make ready.

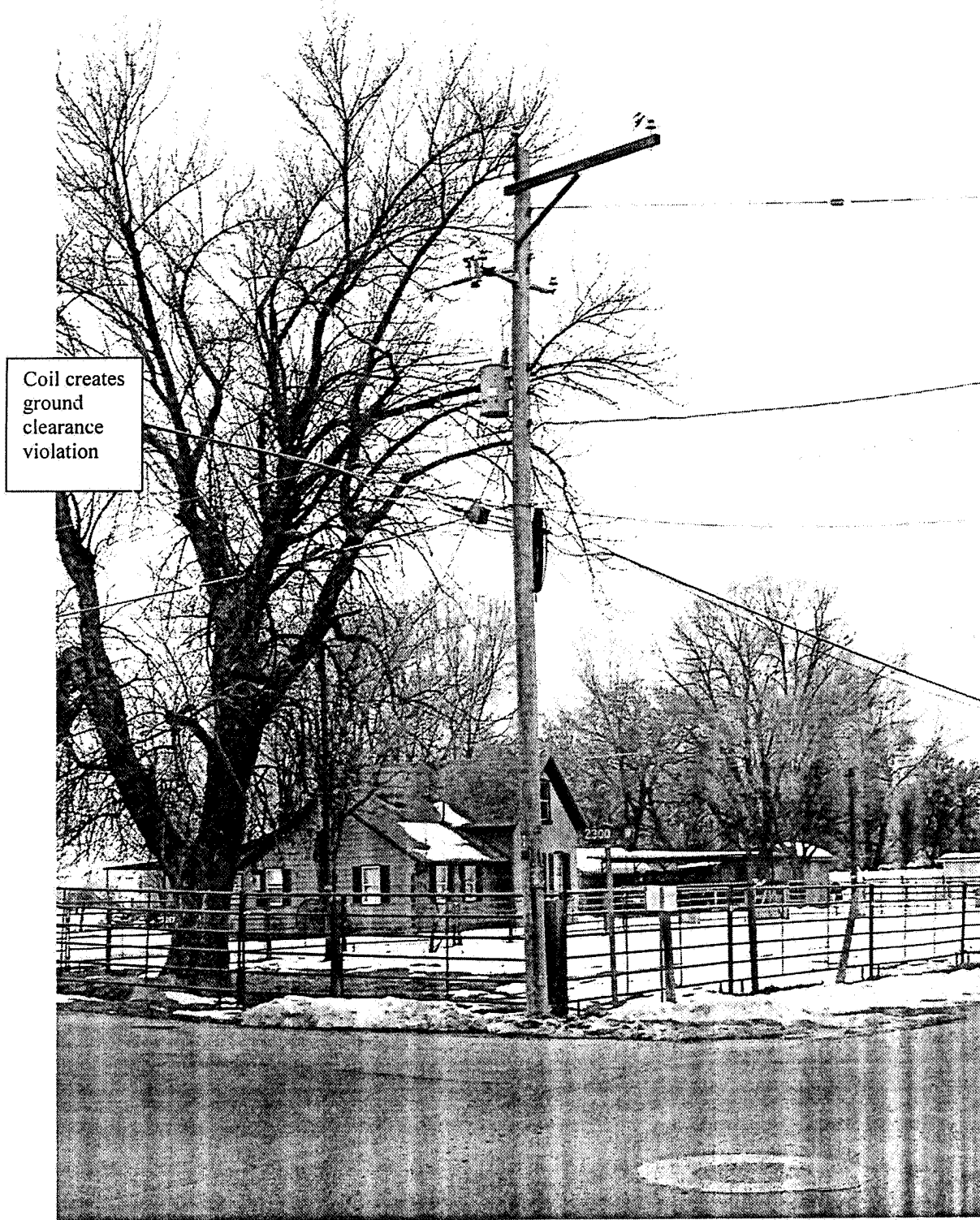


Pole 11206002.0 265405 on 2200 S., West Haven UT

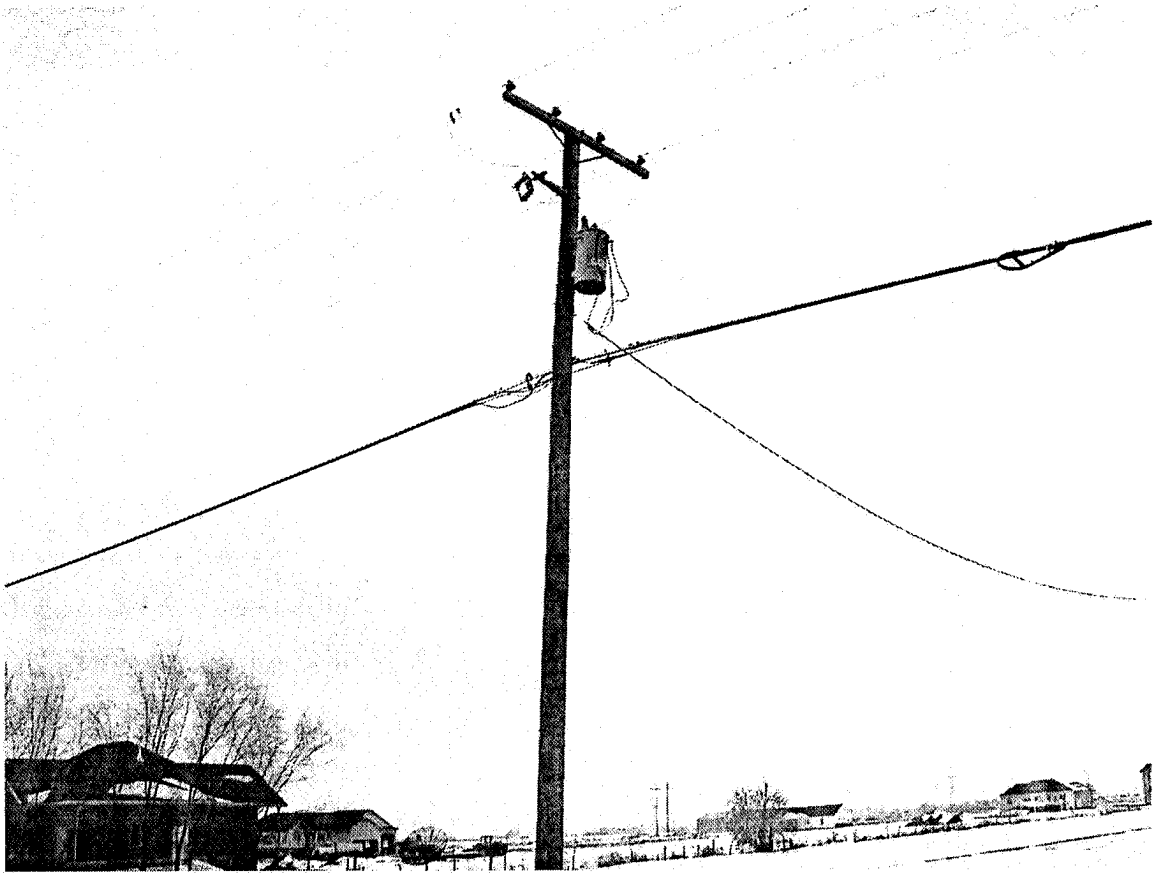
Multiple 40" violations, unsecured cable down pole and laying on ground to ground mounted pedestal falling in ditch. Power supply does not meet minimum ground clearances. One service over road does not meet roadway clearances, and all three services create 40" violations on the service poles they contact.



Pole 11206002.0 264405 2200 S and 2300 W, West Haven UT, temp coil creates ground clearance violation.



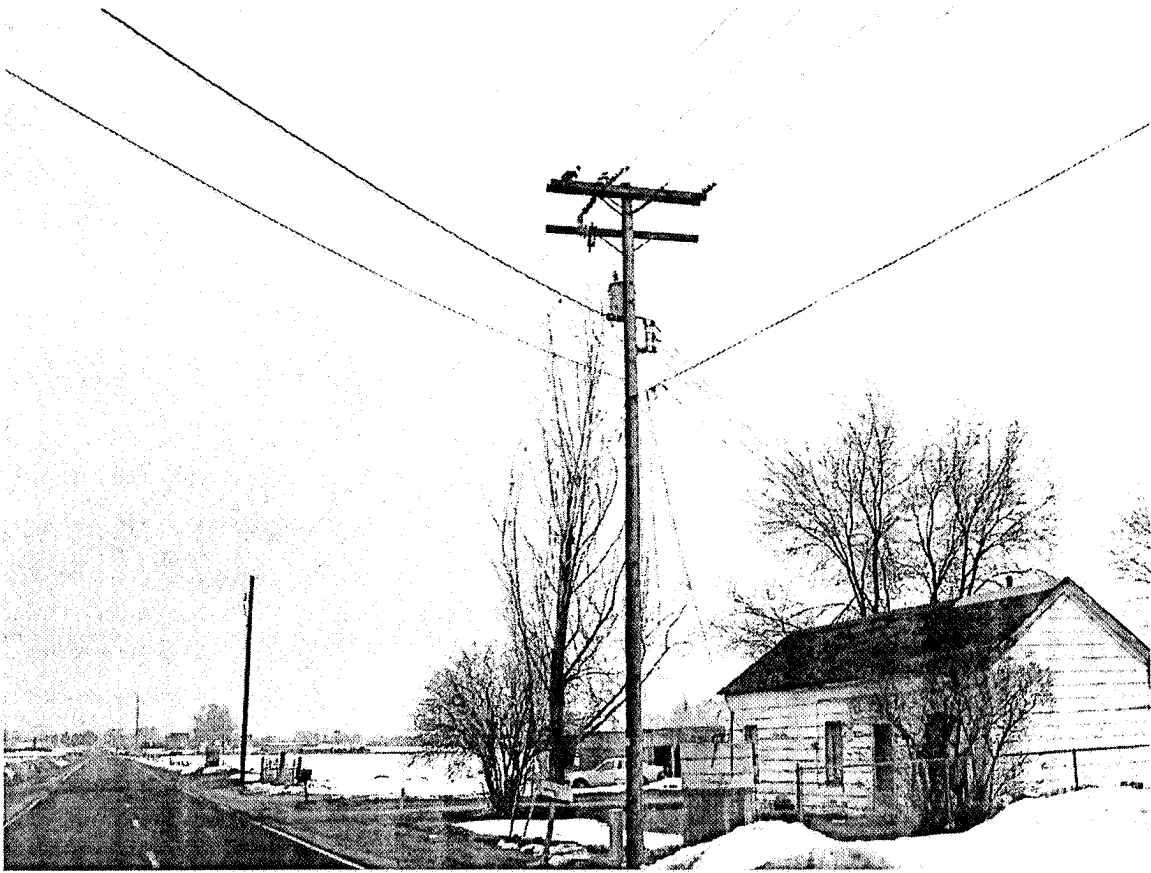
Pole 11206002.0 279502 40" violation, ComCast did not perform make ready when placing new cable.



Pole 11206002.0 279506 to 279507 on 2700 W, ground clearance violation, ComCast did not perform make ready prior to lashing new cable.



Pole 11206002.0 279200 on 2700 W, 40" violation not corrected when placing new cable, unsecured drops hanging down pole.



Pole 11206002.0 260500 to 260502 2200 S near 2700 W, low ground clearance (12' 4") not corrected when placing new cable. See next picture also.



Pole 11206002.0 260500 to 260502, inadequate ground clearance., no make ready prior to placing additional cable.



Pole 11206002.0 263403 on 2200 S. 40" violation, inadequate ground clearance to the west. Cannot maintain 40" and height of drops over roadway. No make ready requested or performed by ComCast.



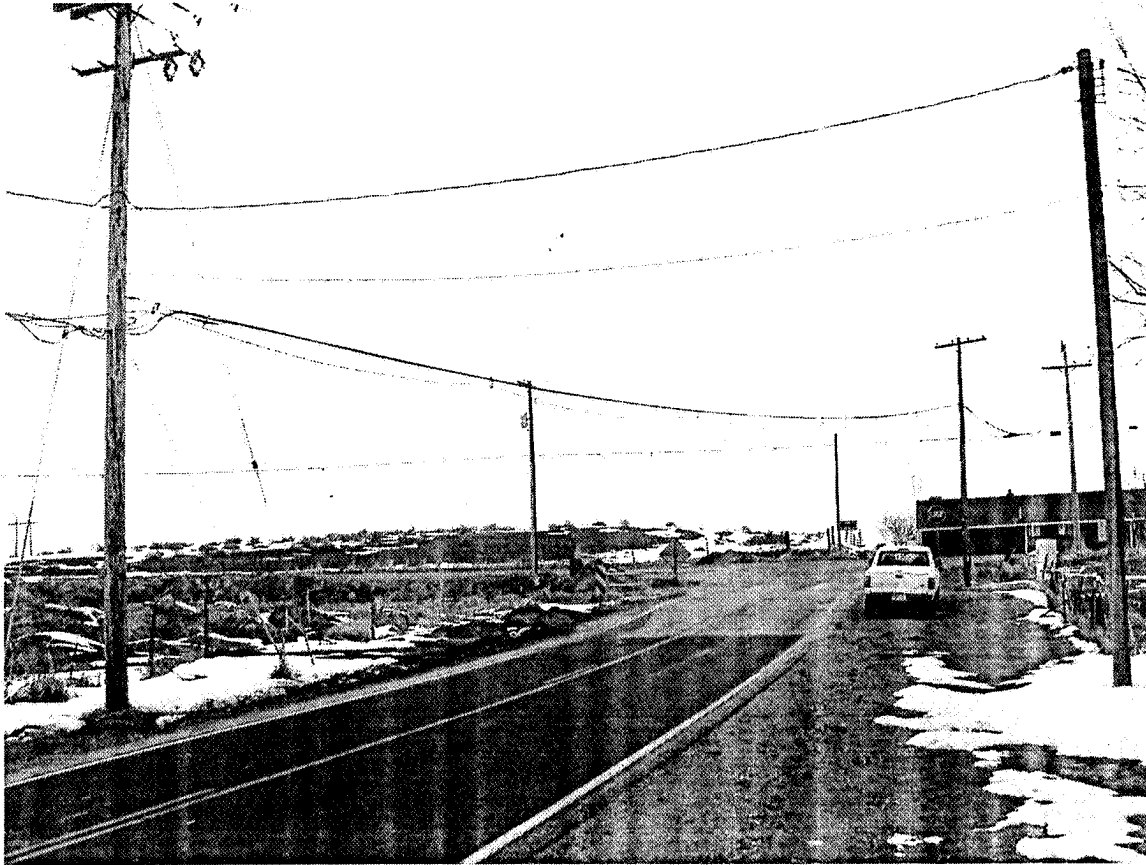
Pole 11206002.0 263400 on 2200 S, 40" violation, several drops hanging to ground unsecured down the pole.



Pole 11206002.0 263406 on 2200 S, unsecured drops hanging down pole and laying on ground, hard to see in picture.



Pole 11206002.0 279904 to 260902 on 2700 W & 1800 S, New cable being placed without resolving existing road clearance violation. No make ready requested, secondary service needs to be raise so attachment can be raised for roadway clearance and maintain 40" clearance at pole. CATV also needs to place anchor and down-guy.

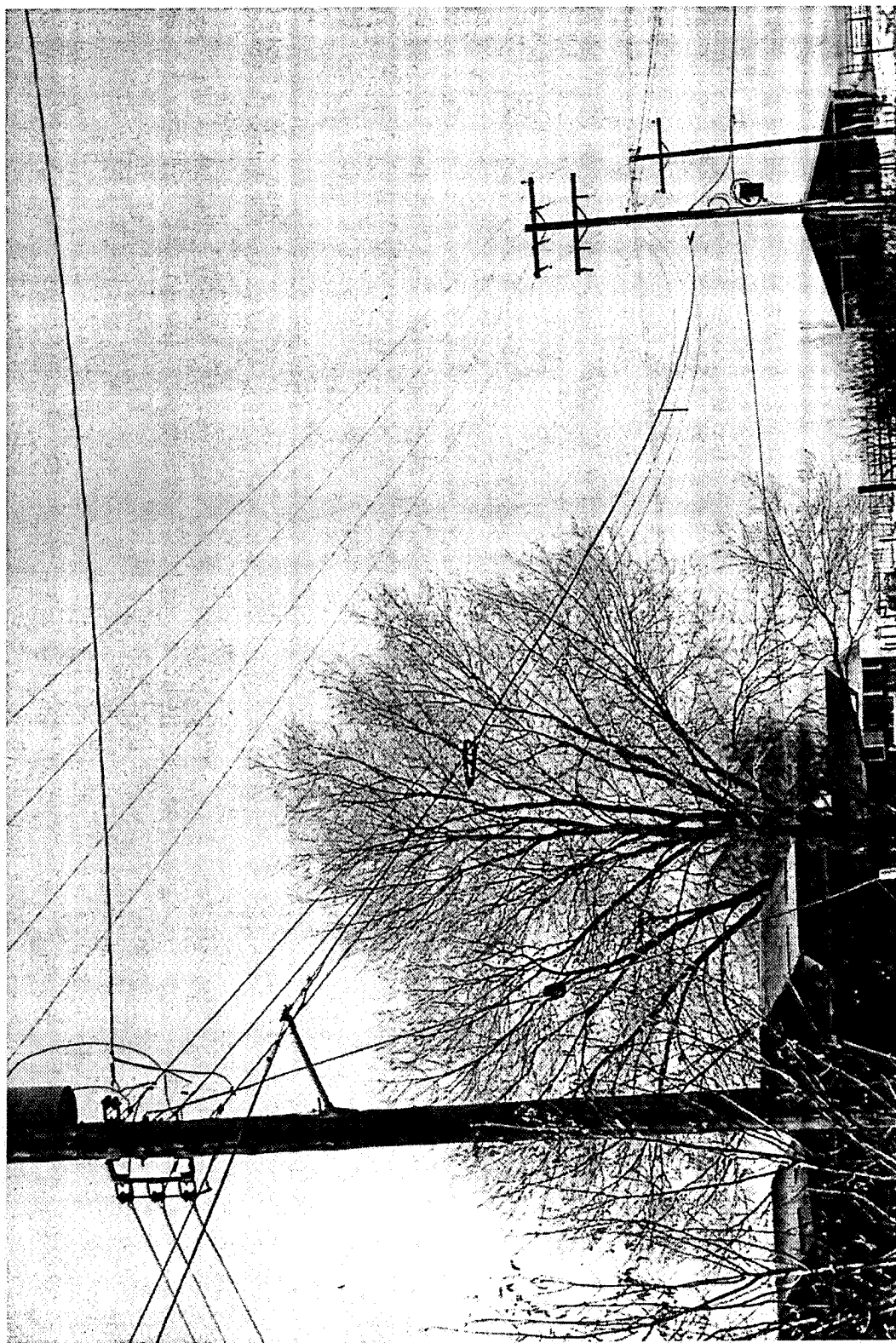


Communications work 2 spans south of Pole 11206002.0 279904, notice the stealth work area protection markers. Truck flashers were not in use either.



Pole # 11206002.0 175503 and 175505 on 02/25/2004. 400 S 4700 W, West Weber, UT

ComCast has placed strand and fiber in violation of NESC clearances and has created a very unsafe condition. A moderate wind will place ComCast in contact with PacifiCorp open wire secondary and energize the ComCast messenger. This eminent hazard will be corrected by PacifiCorp at ComCast expense.

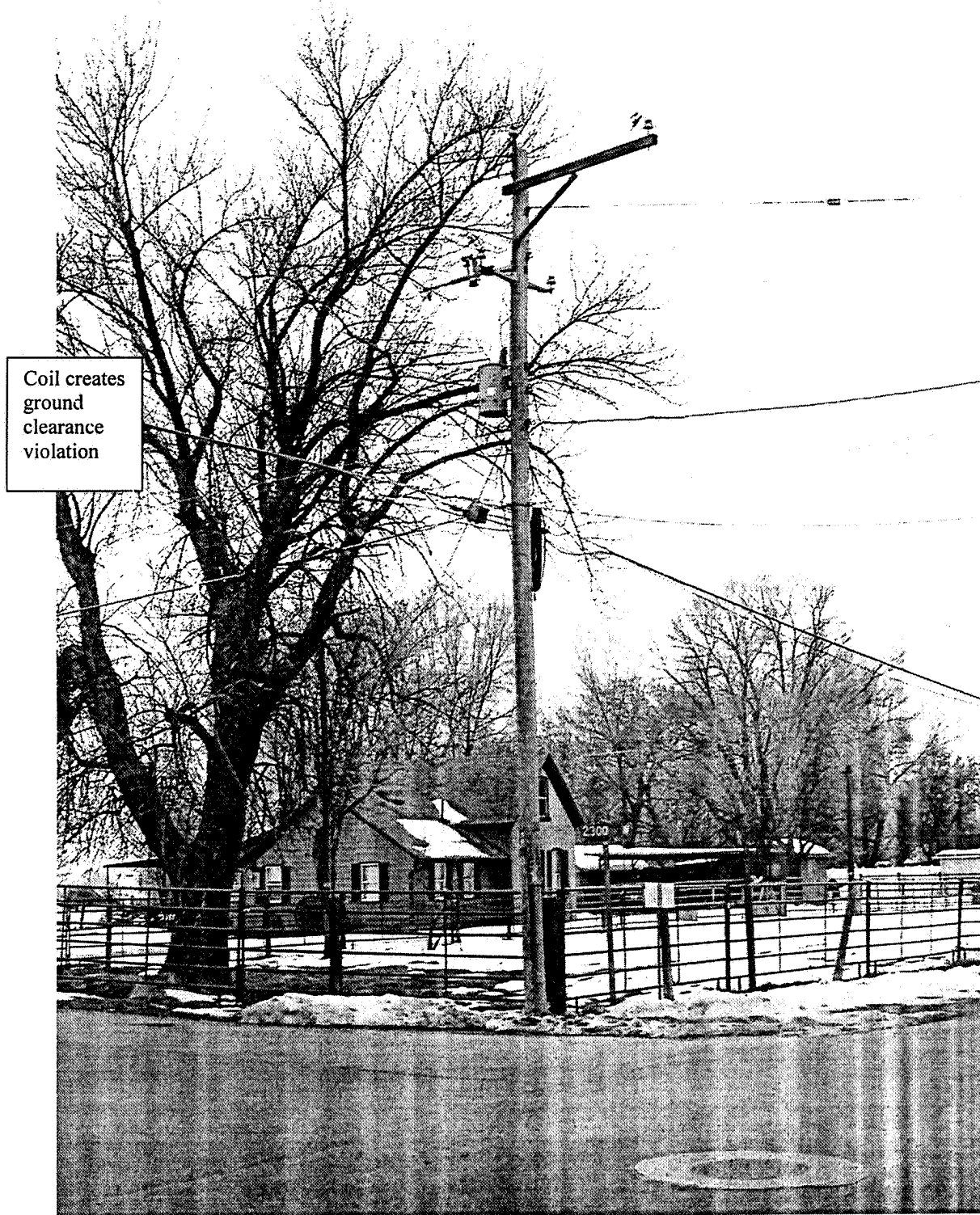


Pole 11206002.0 265405 on 2200 S., West Haven UT

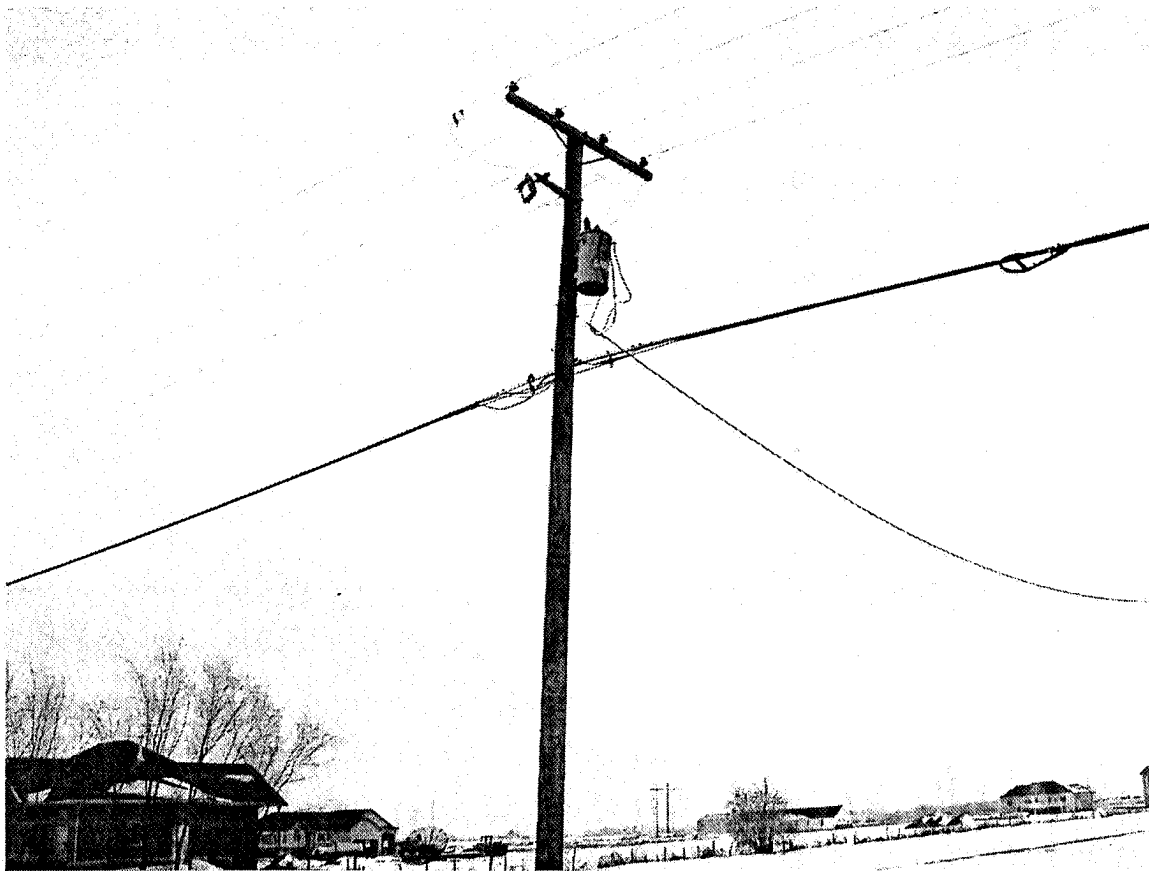
Multiple 40" violations, unsecured cable down pole and laying on ground to ground mounted pedestal falling in ditch. Power supply does not meet minimum ground clearances. One service over road does not meet roadway clearances, and all three services create 40" violations on the service poles they contact.



Pole 11206002.0 264405 2200 S and 2300 W, West Haven UT, temp coil creates ground clearance violation.



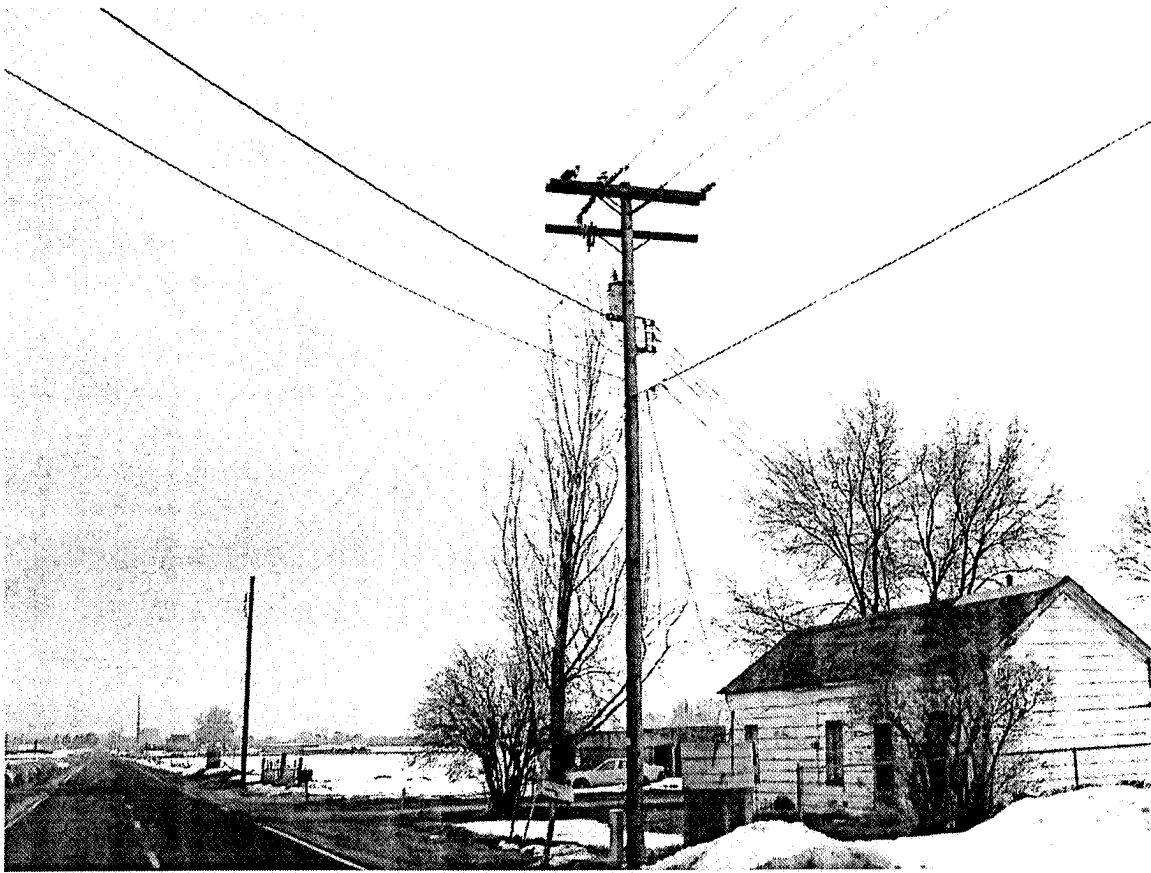
Pole 11206002.0 279502 40" violation, ComCast did not perform make ready when placing new cable.



Pole 11206002.0 279506 to 279507 on 2700 W, ground clearance violation, ComCast did not perform make ready prior to lashing new cable.



Pole 11206002.0 279200 on 2700 W, 40" violation not corrected when placing new cable, unsecured drops hanging down pole.



Pole 11206002.0 260500 to 260502 2200 S near 2700 W, low ground clearance (12' 4") not corrected when placing new cable. See next picture also.



Pole 11206002.0 260500 to 260502, inadequate ground clearance., no make ready prior to placing additional cable.



Pole 11206002.0 263403 on 2200 S. 40" violation, inadequate ground clearance to the west. Cannot maintain 40" and height of drops over roadway. No make ready requested or performed by ComCast.



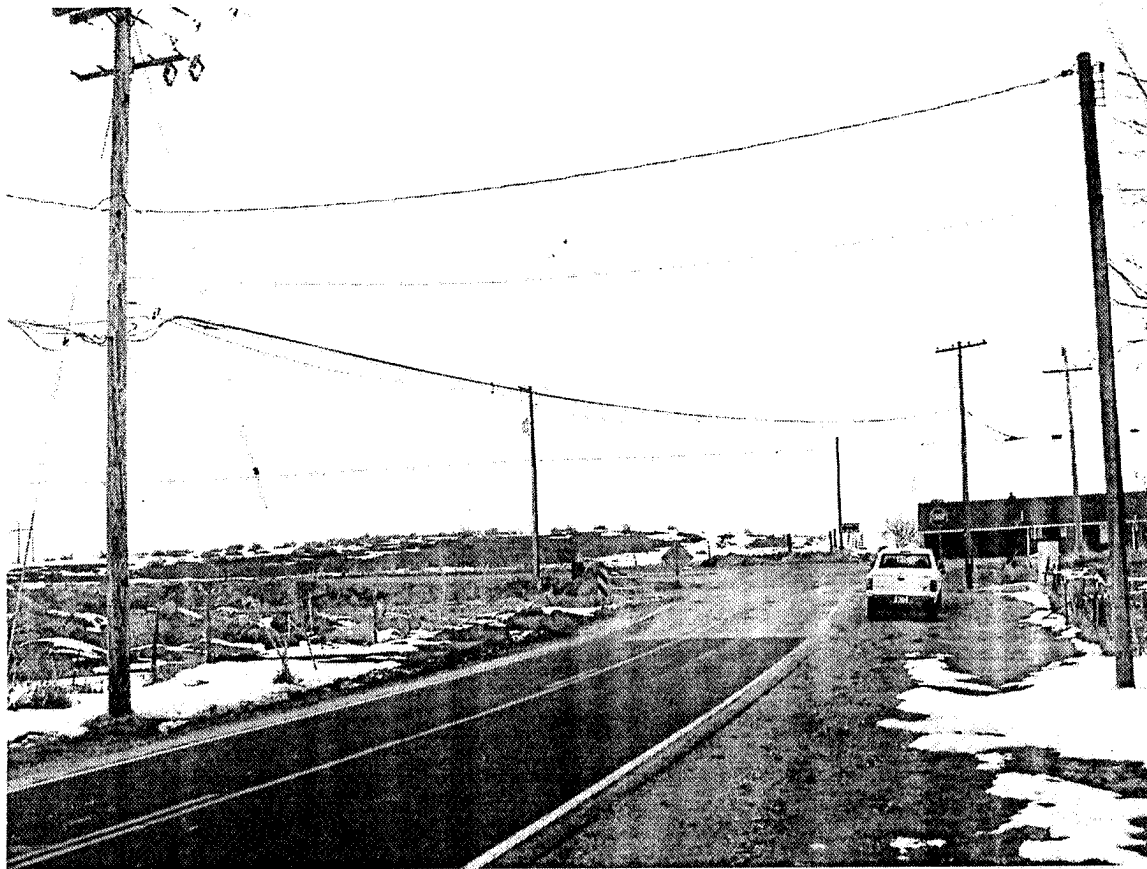
Pole 11206002.0 263400 on 2200 S, 40" violation, several drops hanging to ground unsecured down the pole.



Pole 11206002.0 263406 on 2200 S, unsecured drops hanging down pole and laying on ground, hard to see in picture.



Pole 11206002.0 279904 to 260902 on 2700 W & 1800 S, New cable being placed without resolving existing road clearance violation. No make ready requested, secondary service needs to be raised so attachment can be raised for roadway clearance and maintain 40" clearance at pole. CATV also needs to place anchor and down-guy.



Communications work 2 spans south of Pole 11206002.0 279904, notice the stealth work area protection markers. Truck flashers were not in use either.



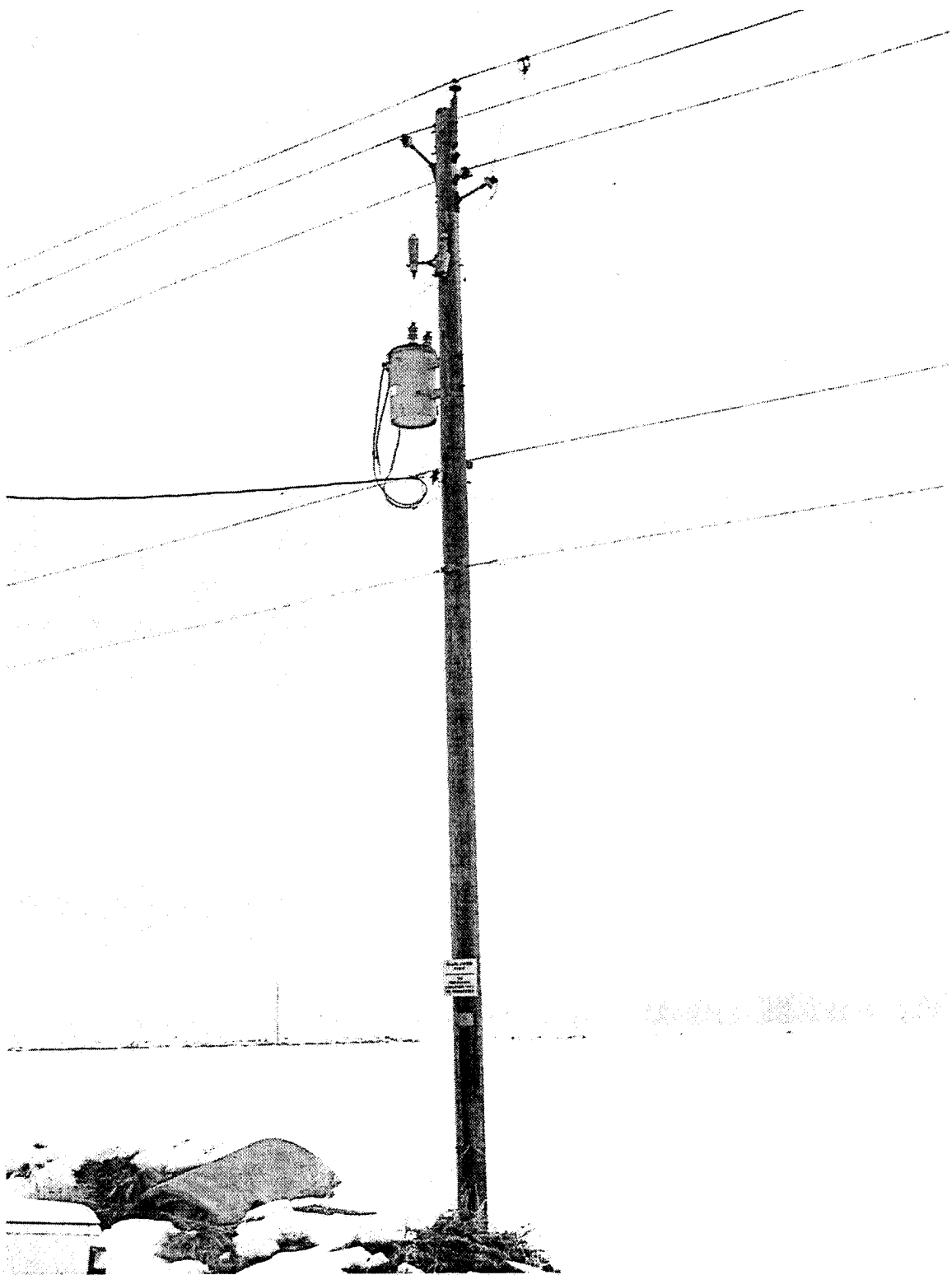
Pole 11206002.0 190901, 1200 S & 5900 W, ComCast stand off arm placed within 2" of lowest secondary. 40" violation, ComCast messenger also placed in violation of mid-span clearance to slack neutral across roadway to pole 190801 to the south. No make ready requested prior to ComCast creating violation.



Pole 11206002.0 190801 1200 S & 5900 W, ComCast messenger placed in violation of clearance to PacifiCorp neutral. Neutral is slack and ComCast messenger will come in contact when wind blows. ComCast attachment on pole 190901 to the north is @ the same height as the lowest point of secondary. No make ready was requested.



Pole 11206002.0 180201 on 5900 W, new messenger placed in 40" violation to secondary.



Pole 11206002.0 180301 on 5900 W, new messenger placed in 40" violation to secondary.

