

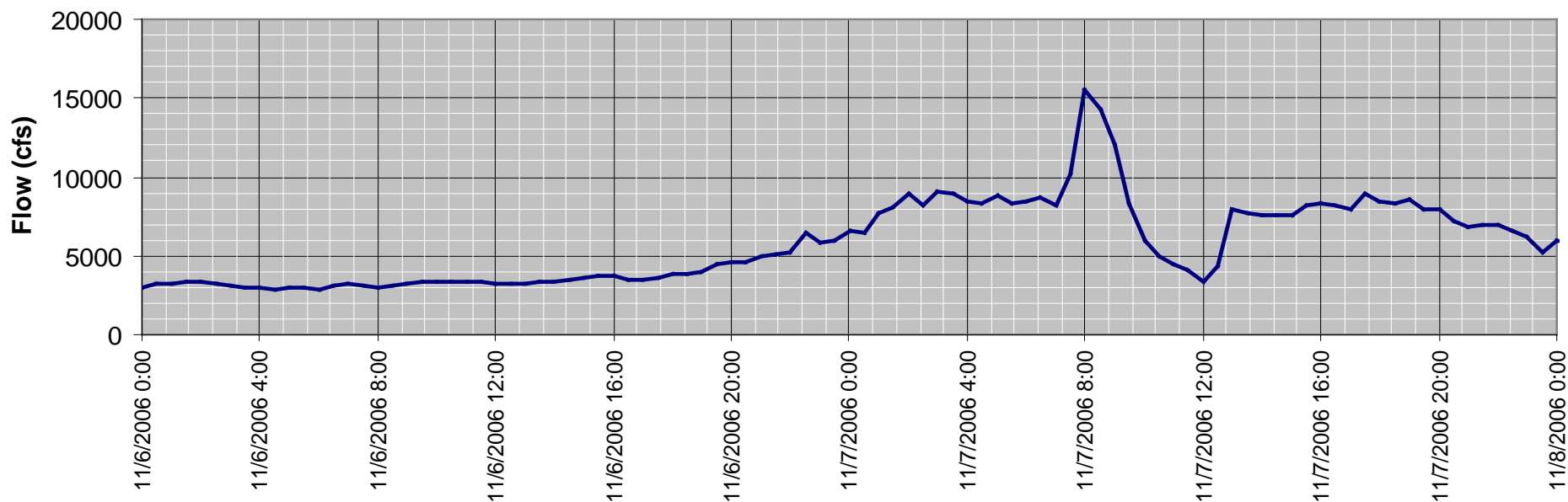
# Powerdale Damage Assessment

November 14, 2006

## 2 - Powerdale Flood Damage 11/9/2006

### Hood River at Tucker Bridge (USGS)

Flow Event, 11/6/06 - 11/7/06



Based on Provisional Data. Gaging equipment suffered some malfunction during this event so hydrograph likely does not resemble rising limb. USGS is in the process of reconstructing this event.



**Entrance to  
fish ladder**



**Sorting facility  
fish return pipes**



**Silt at fish ladder**



**Auxiliary fish  
ladder pump out  
of service**

**Fish ladder**



**Sand traps full of sediment**



**Collapsed 10' dia. wood stave  
flowline – 490'**

Walkway section lost downstream – location unknown

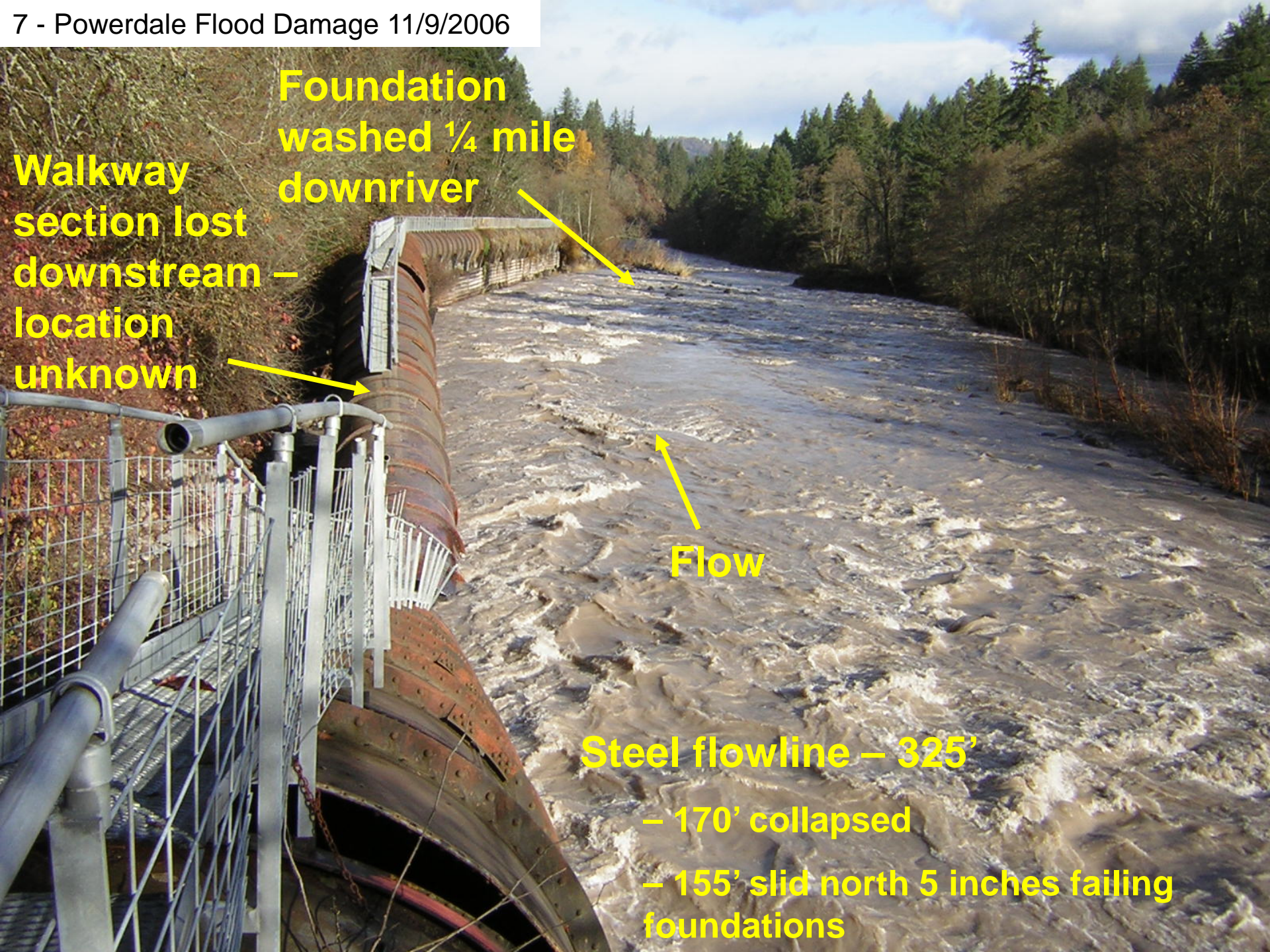
Foundation washed ¼ mile downriver

Flow

Steel flowline – 325'

– 170' collapsed

– 155' slid north 5 inches failing foundations



**Collapsed steel flowline – 325' requiring replacement**

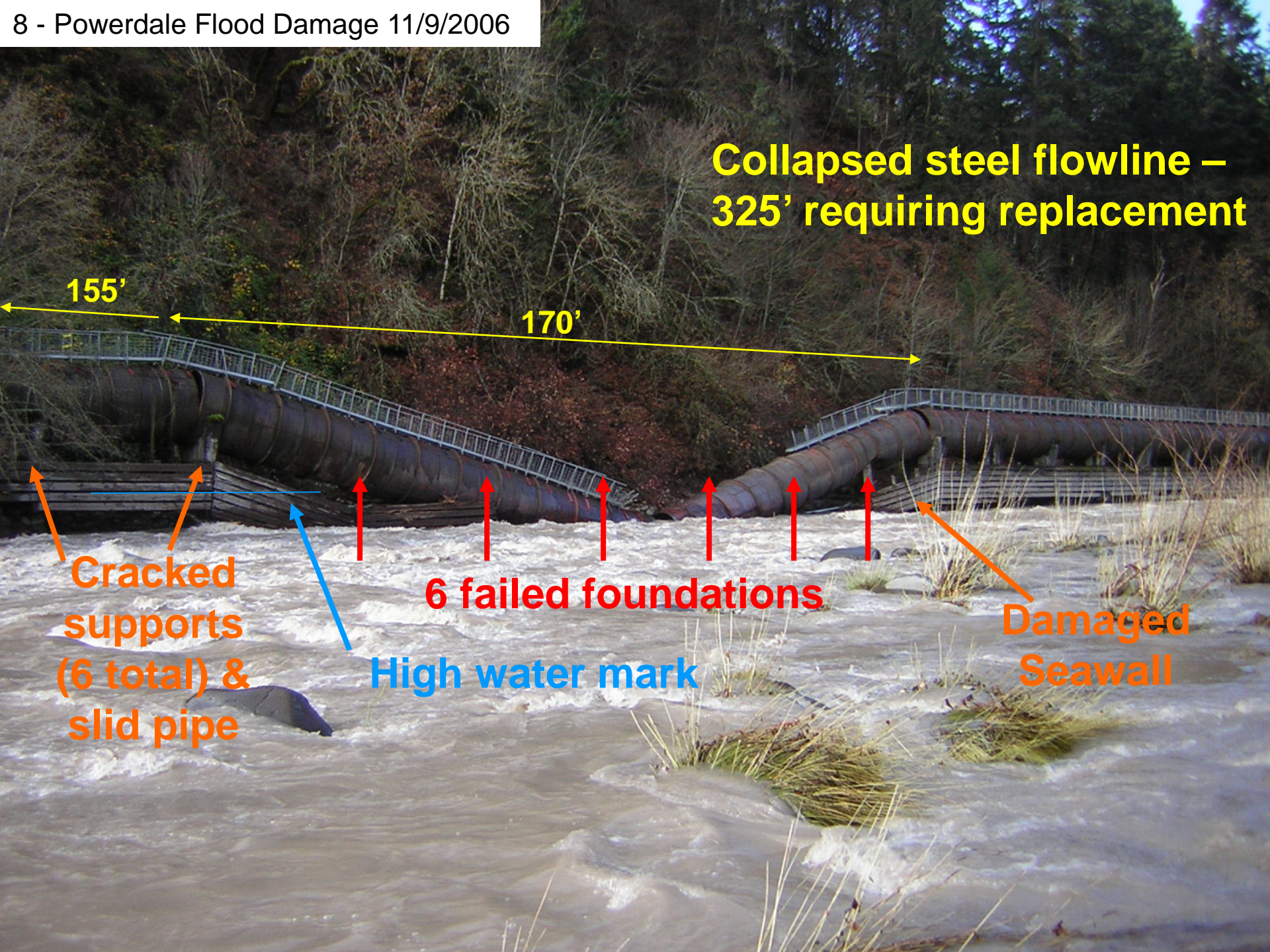


**Cracked supports (6 total) & slid pipe**

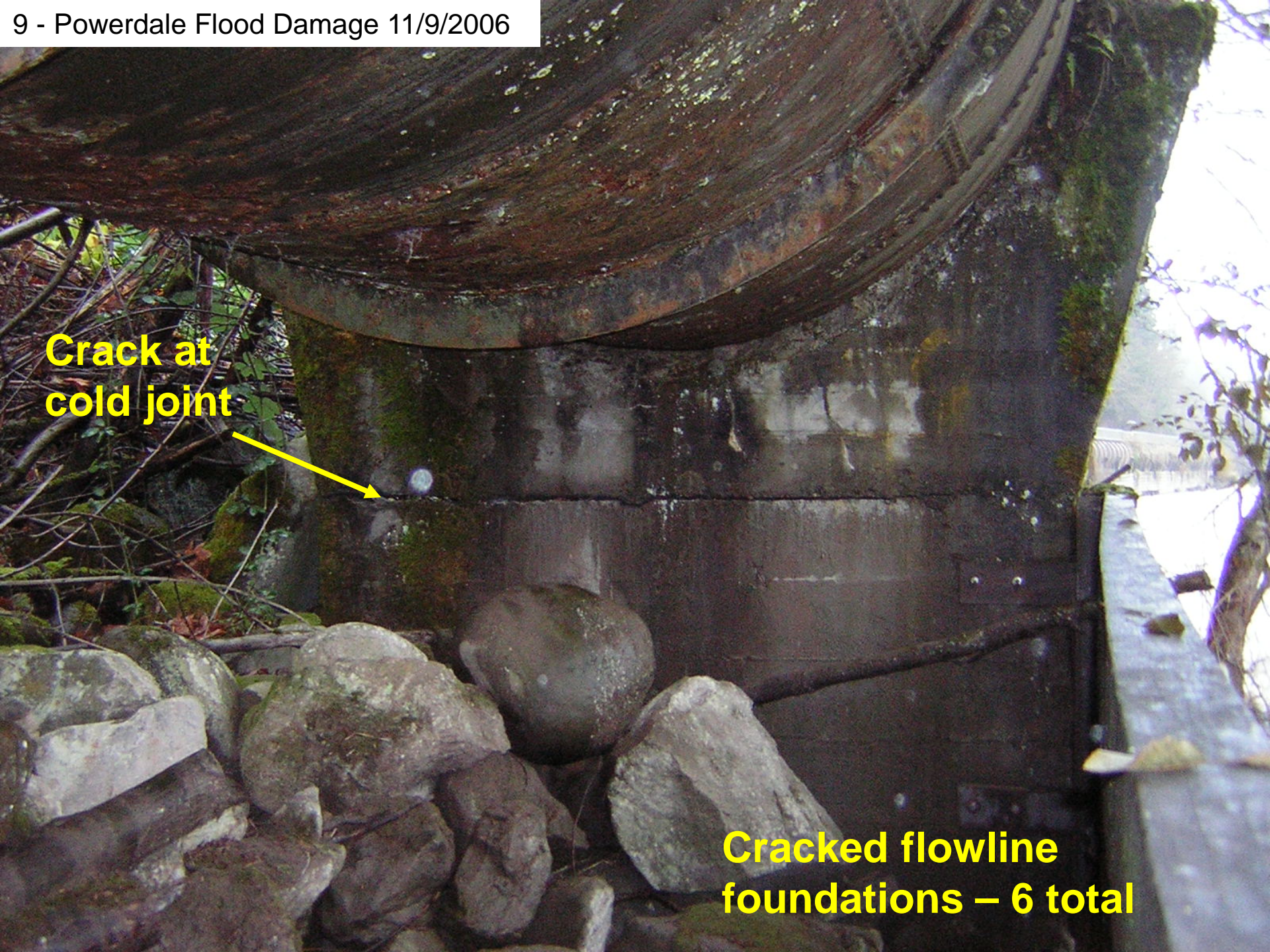
**6 failed foundations**

**High water mark**

**Damaged Seawall**



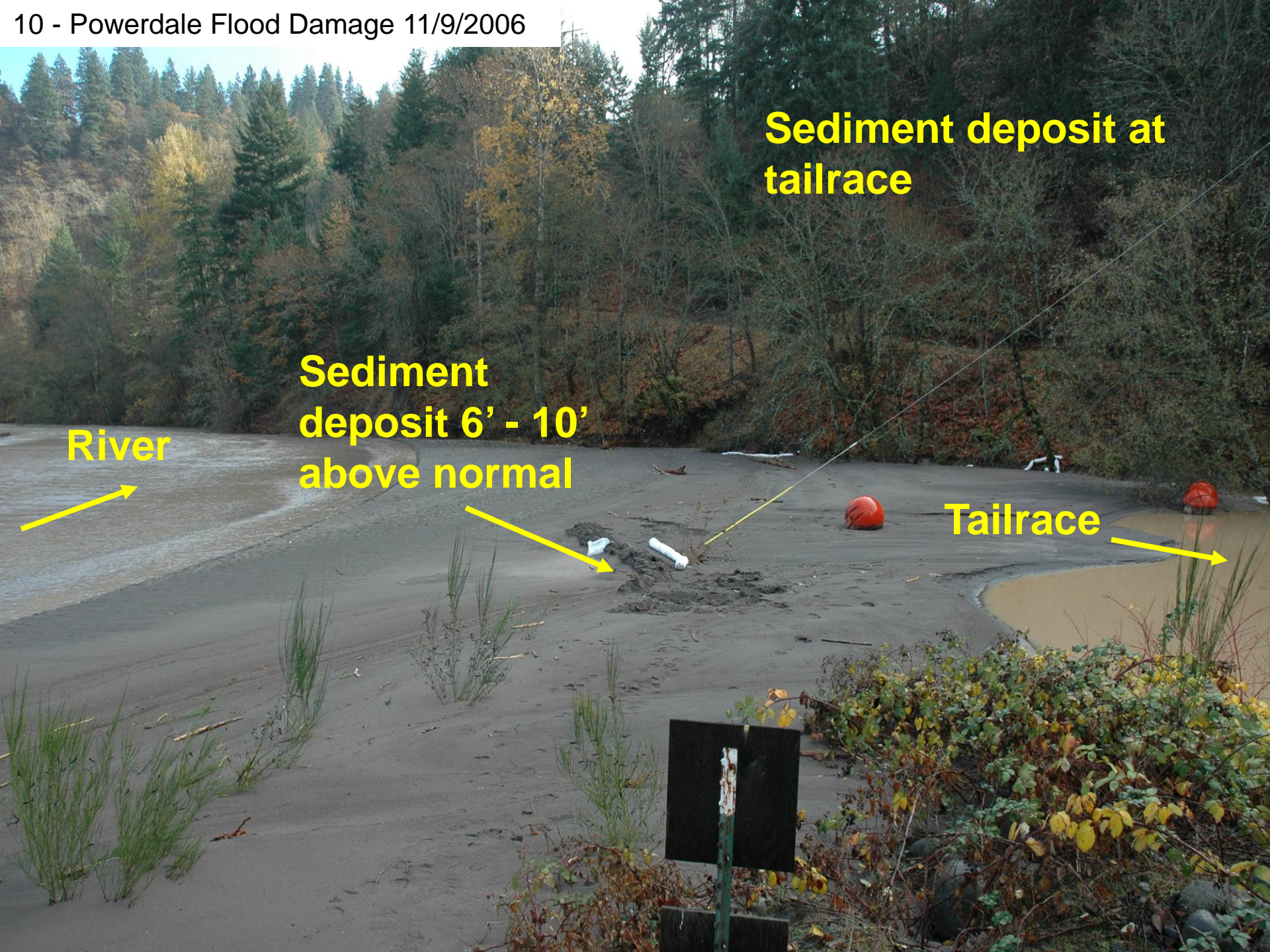




**Crack at  
cold joint**



**Cracked flowline  
foundations – 6 total**



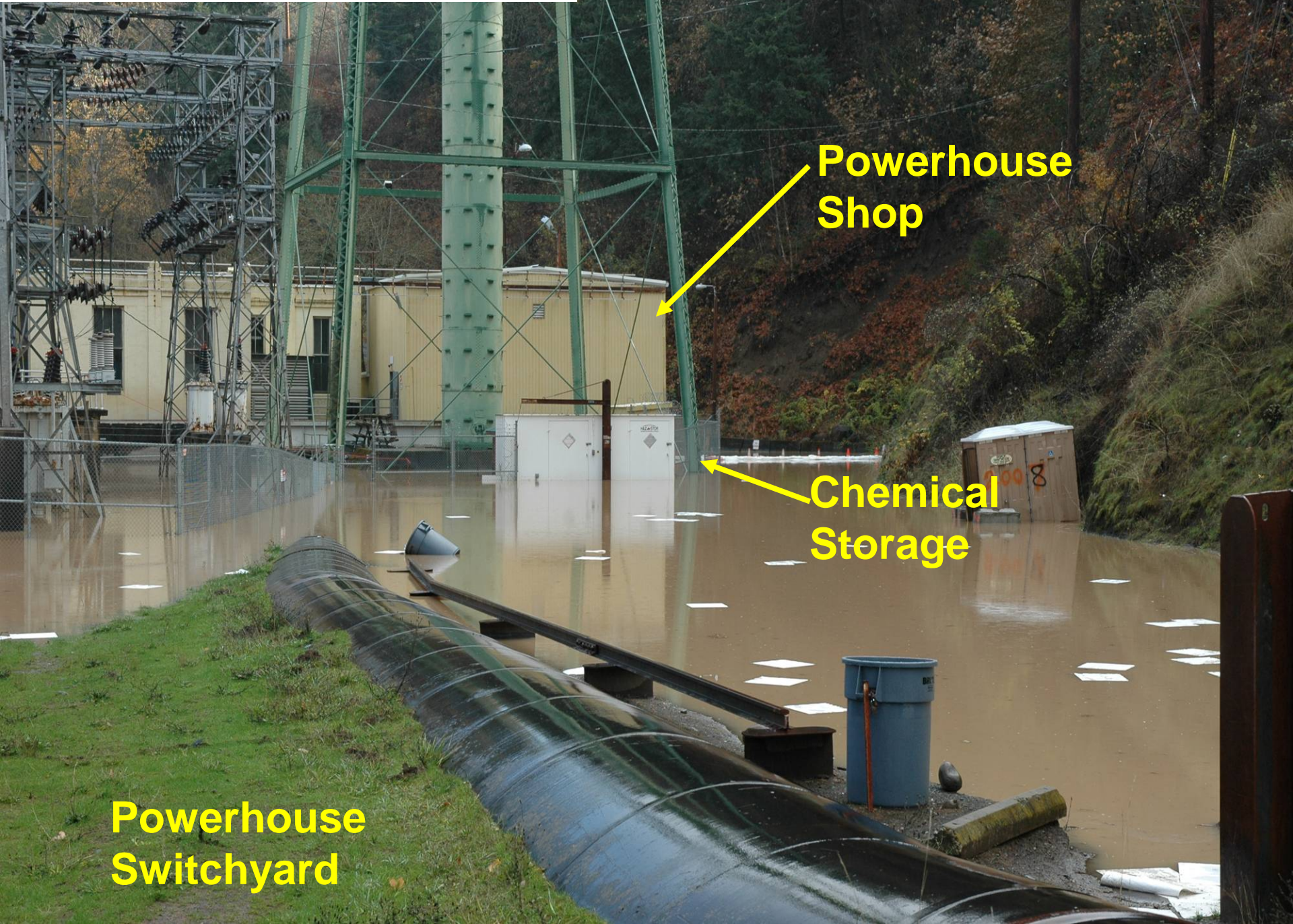
**Sediment deposit at tailrace**

**Sediment deposit 6' - 10' above normal**

**River**

**Tailrace**





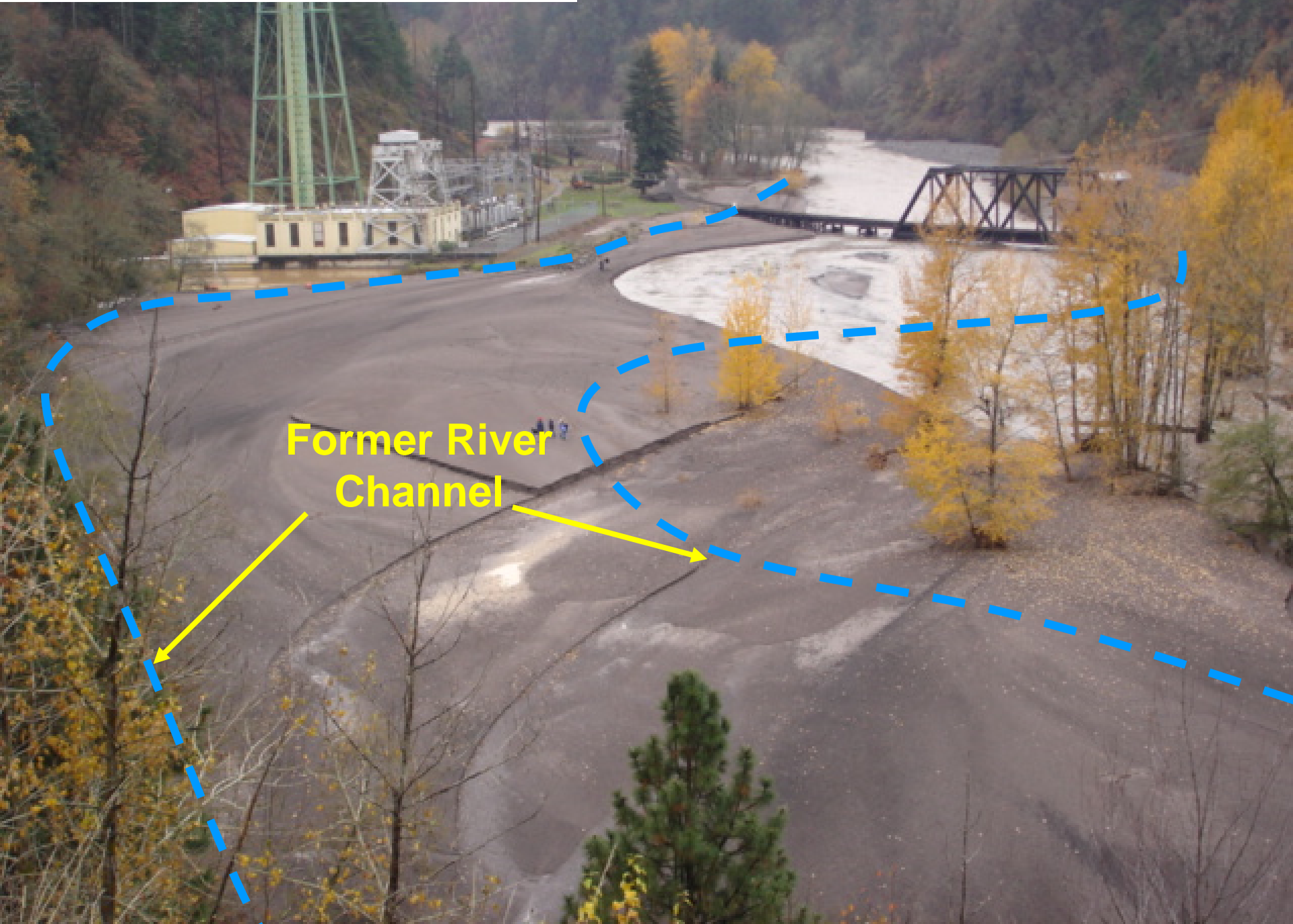
**Powerhouse Shop**

**Chemical Storage**

**Powerhouse Switchyard**

# Powerhouse Shop





**Former River  
Channel**

