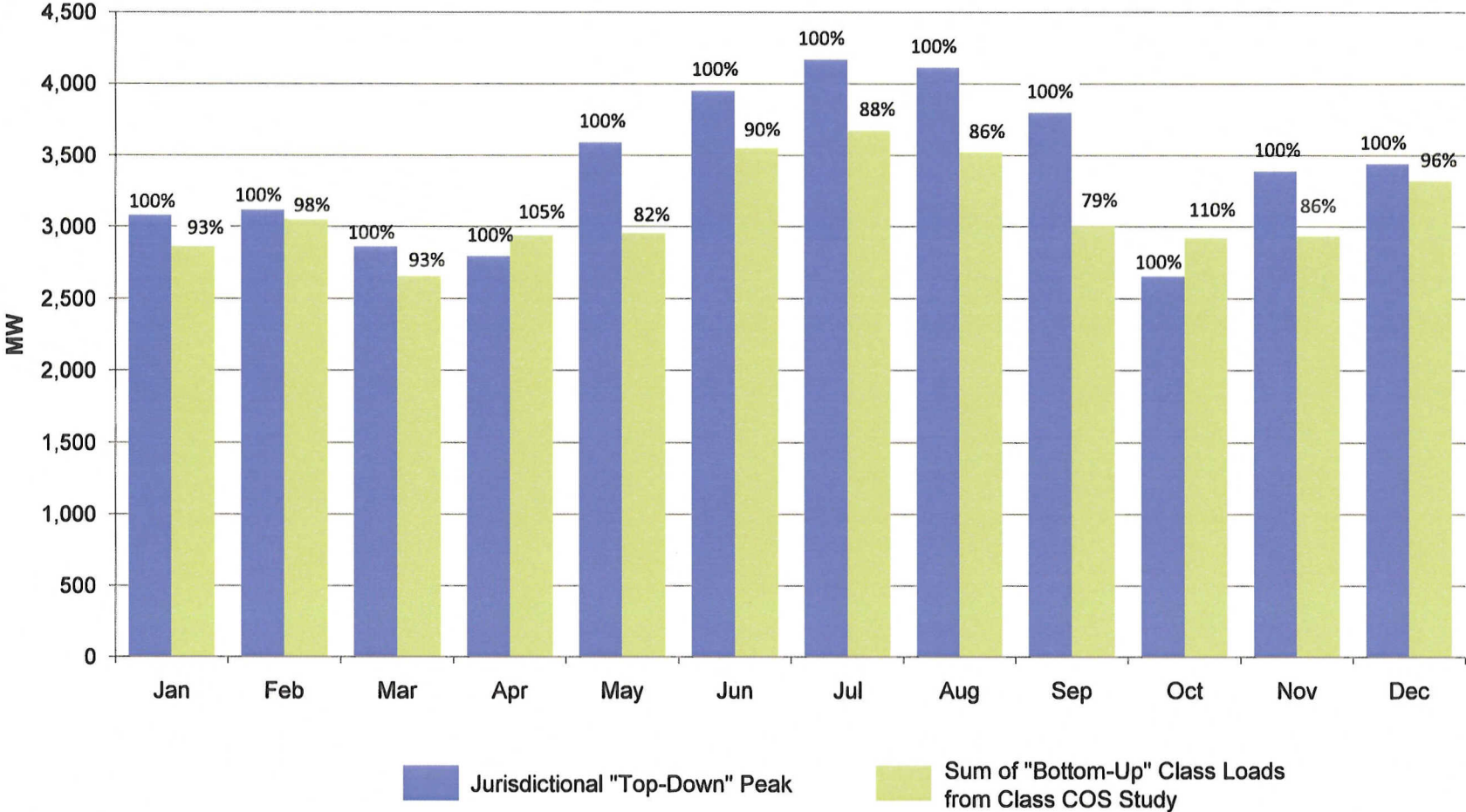


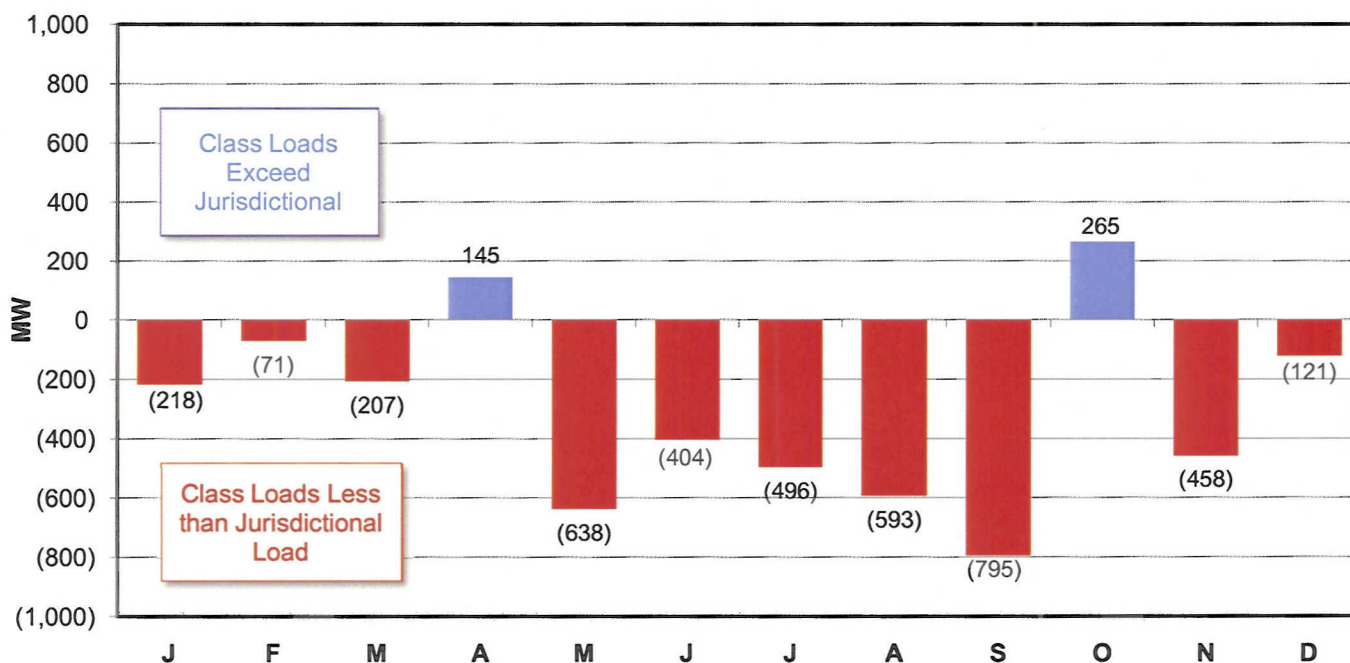
ROCKY MOUNTAIN POWER

System Peak Coincident Demands as Estimated by RMP 12 Months Ending June 2010



ROCKY MOUNTAIN POWER

Difference Between "Top-Down" Jurisdictional Peak for Utah
and "Bottom-Up" Loads from Class Cost of Service Study
12 Months Ending June 2010



Line	Month	Total Utah Jurisdictional used in Inter-Jurisdictional Allocation (1)	Sum of Utah Retail Classes from Class COS Study (2)	Class Total Exceeds (is less than) Total Jurisdiction (3)	Difference as a Percent of Column (1) (4)
1	Jan	3,079	2,861	(218)	-7%
2	Feb	3,123	3,052	(71)	-2%
3	Mar	2,860	2,653	(207)	-7%
4	Apr	2,794	2,939	145	5%
5	May	3,591	2,953	(638)	-18%
6	Jun	3,952	3,548	(404)	-10%
7	Jul	4,169	3,673	(496)	-12%
8	Aug	4,113	3,520	(593)	-14%
9	Sep	3,799	3,004	(795)	-21%
10	Oct	2,656	2,921	265	10%
11	Nov	3,390	2,932	(458)	-14%
12	Dec	<u>3,442</u>	<u>3,321</u>	<u>(121)</u>	-4%
13	Total	40,968	37,378	(3,590)	-9%

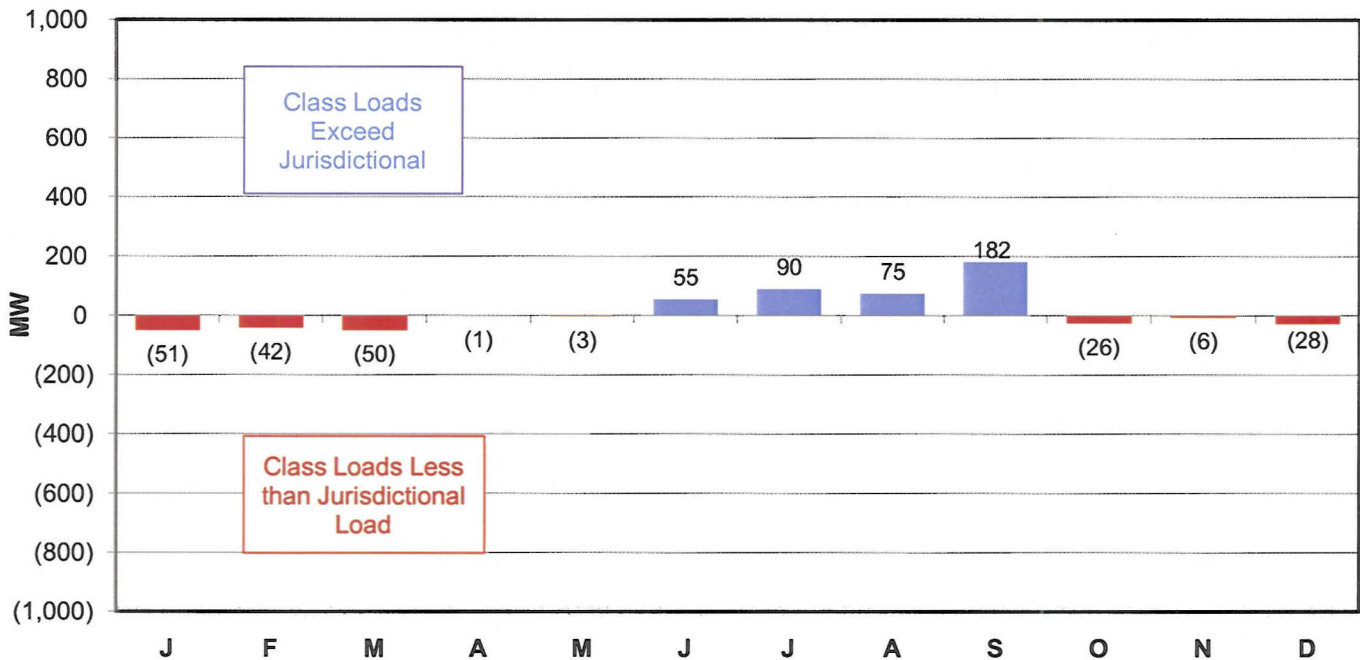
Sources:

Exhibit RMP____(CCP-3).

McDougal Exhibit RMP____(SRM-2), Page 10.13.

ROCKY MOUNTAIN POWER

Difference Between "Top-Down" Jurisdictional Peak for Utah
and "Bottom-Up" Loads from Class Cost of Service Study
Docket No. 01-035-01
12 Months Ended September 2000



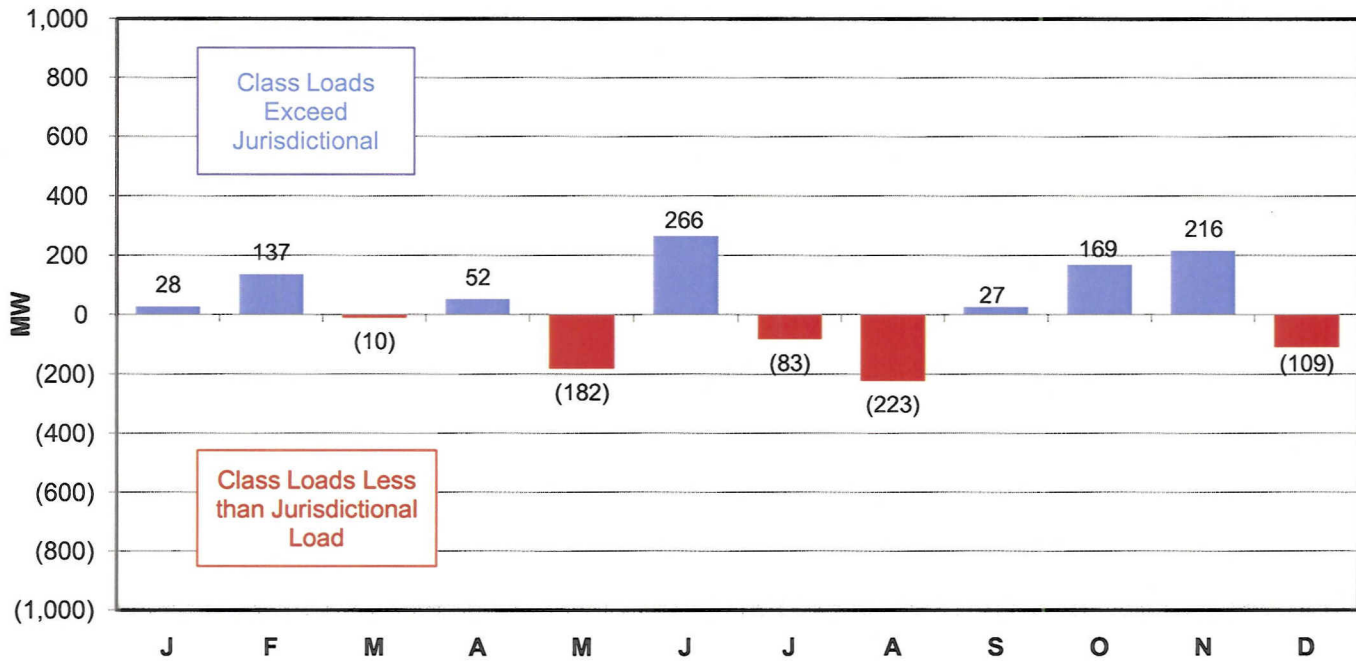
Line	Month	Total Utah Jurisdictional used in Inter-Jurisdictional Allocation (1)	Sum of Utah Retail Classes from Class COS Study (2)	Class Total Exceeds (is less than) Total Jurisdiction (3)	Difference as a Percent of Column (1) (4)
1	Jan	2,299	2,248	(51)	-2%
2	Feb	2,139	2,097	(42)	-2%
3	Mar	2,164	2,113	(50)	-2%
4	Apr	2,084	2,083	(1)	0%
5	May	2,578	2,574	(3)	0%
6	Jun	2,896	2,951	55	2%
7	Jul	3,281	3,371	90	3%
8	Aug	3,281	3,357	75	2%
9	Sep	2,728	2,910	182	7%
10	Oct	2,042	2,016	(26)	-1%
11	Nov	2,369	2,364	(6)	0%
12	Dec	<u>2,571</u>	<u>2,543</u>	<u>(28)</u>	-1%
13	Total	30,431	30,628	197	1%

Sources:

RMP Data Response to UIEC Data Request 4.1-1, Page 6 of 6
RMP Data Response to UIEC Data Request 4.1-2, Page 6 of 6

ROCKY MOUNTAIN POWER

Difference Between "Top-Down" Jurisdictional Peak for Utah
and "Bottom-Up" Loads from Class Cost of Service Study
Docket No. 03-2035-02
12 Months Ended March 2003



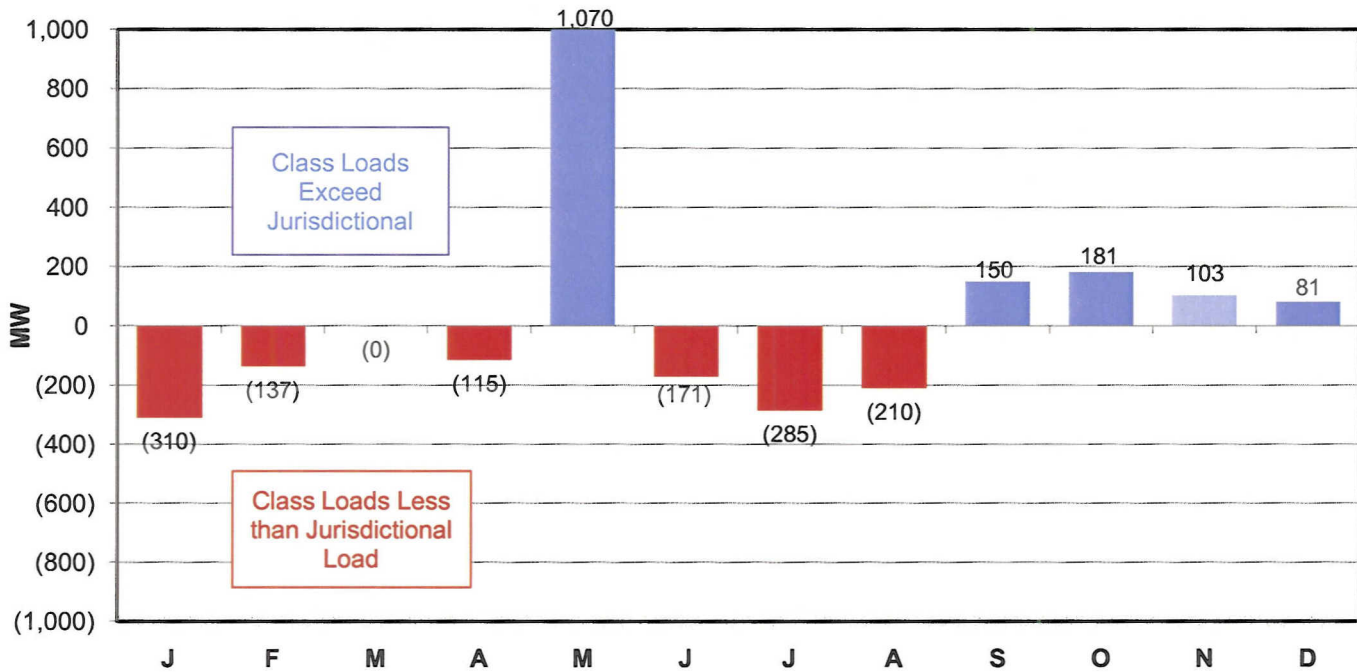
Line	Month	Total Utah Jurisdictional used in Inter-Jurisdictional Allocation (1)	Sum of Utah Retail Classes from Class COS Study (2)	Class Total Exceeds (is less than) Total Jurisdiction (3)	Difference as a Percent of Column (1) (4)
1	Jan	2,667	2,695	28	1%
2	Feb	2,643	2,779	137	5%
3	Mar	2,504	2,493	(10)	0%
4	Apr	2,310	2,362	52	2%
5	May	2,743	2,561	(182)	-7%
6	Jun	3,064	3,329	266	9%
7	Jul	3,494	3,411	(83)	-2%
8	Aug	3,354	3,131	(223)	-7%
9	Sep	3,215	3,241	27	1%
10	Oct	2,459	2,628	169	7%
11	Nov	2,667	2,882	216	8%
12	Dec	<u>3,057</u>	<u>2,948</u>	<u>(109)</u>	-4%
13	Total	34,175	34,462	287	1%

Sources:

RMP Data Response to UIEC Data Request 4.1-1, Page 5 of 6
RMP Data Response to UIEC Data Request 4.1-2, Page 5 of 6

ROCKY MOUNTAIN POWER

Difference Between "Top-Down" Jurisdictional Peak for Utah
and "Bottom-Up" Loads from Class Cost of Service Study
Docket No. 04-035-42
12 Months Ended March 2006



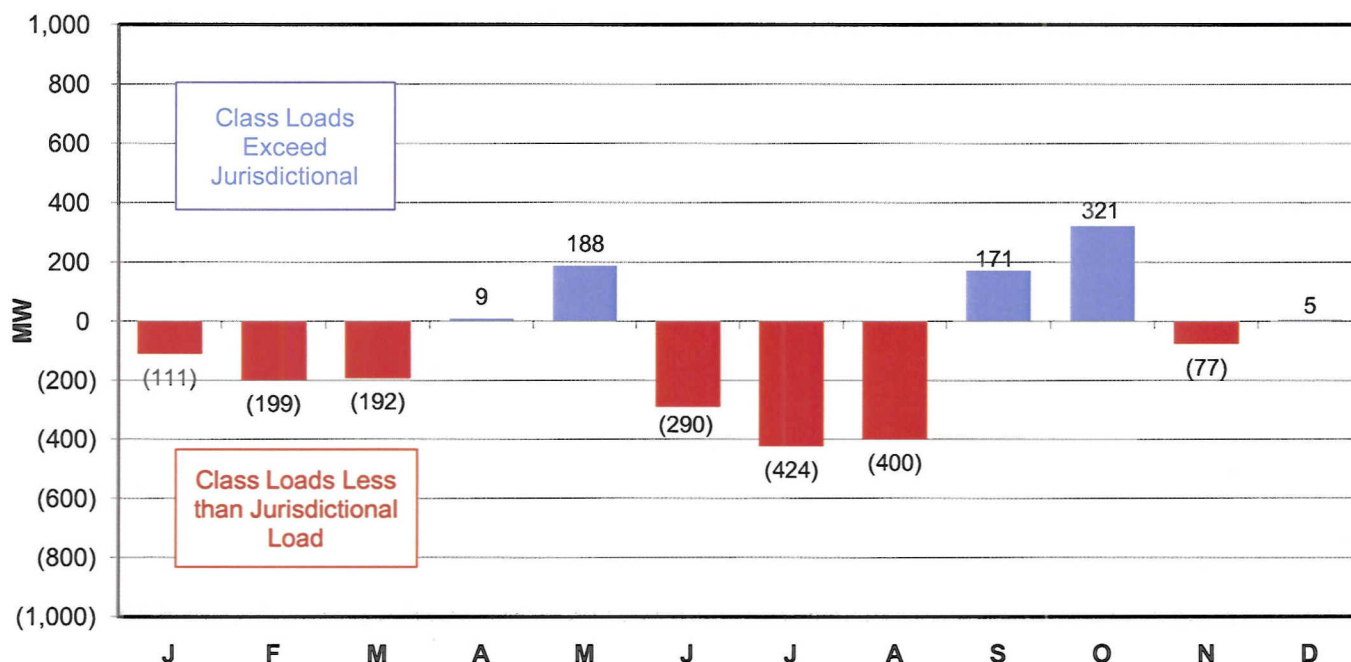
Line	Month	Total Utah Jurisdictional used in Inter-Jurisdictional Allocation (1)	Sum of Utah Retail Classes from Class COS Study (2)	Class Total Exceeds (is less than) Total Jurisdiction (3)	Difference as a Percent of Column (1) (4)
1	Jan	3,163	2,853	(310)	-10%
2	Feb	3,292	3,155	(137)	-4%
3	Mar	2,712	2,712	(0)	0%
4	Apr	2,548	2,433	(115)	-5%
5	May	2,719	3,789	1,070	39%
6	Jun	3,616	3,444	(171)	-5%
7	Jul	3,987	3,701	(285)	-7%
8	Aug	4,136	3,925	(210)	-5%
9	Sep	3,537	3,686	150	4%
10	Oct	2,895	3,076	181	6%
11	Nov	3,045	3,148	103	3%
12	Dec	<u>3,137</u>	<u>3,217</u>	<u>81</u>	3%
13	Total	38,784	39,141	356	1%

Sources:

RMP Data Response to UIEC Data Request 4.1-1, Page 4 of 6
RMP Data Response to UIEC Data Request 4.1-2, Page 4 of 6

ROCKY MOUNTAIN POWER

Difference Between "Top-Down" Jurisdictional Peak for Utah
and "Bottom-Up" Loads from Class Cost of Service Study
Docket No. 06-035-21
12 Months Ended September 2007



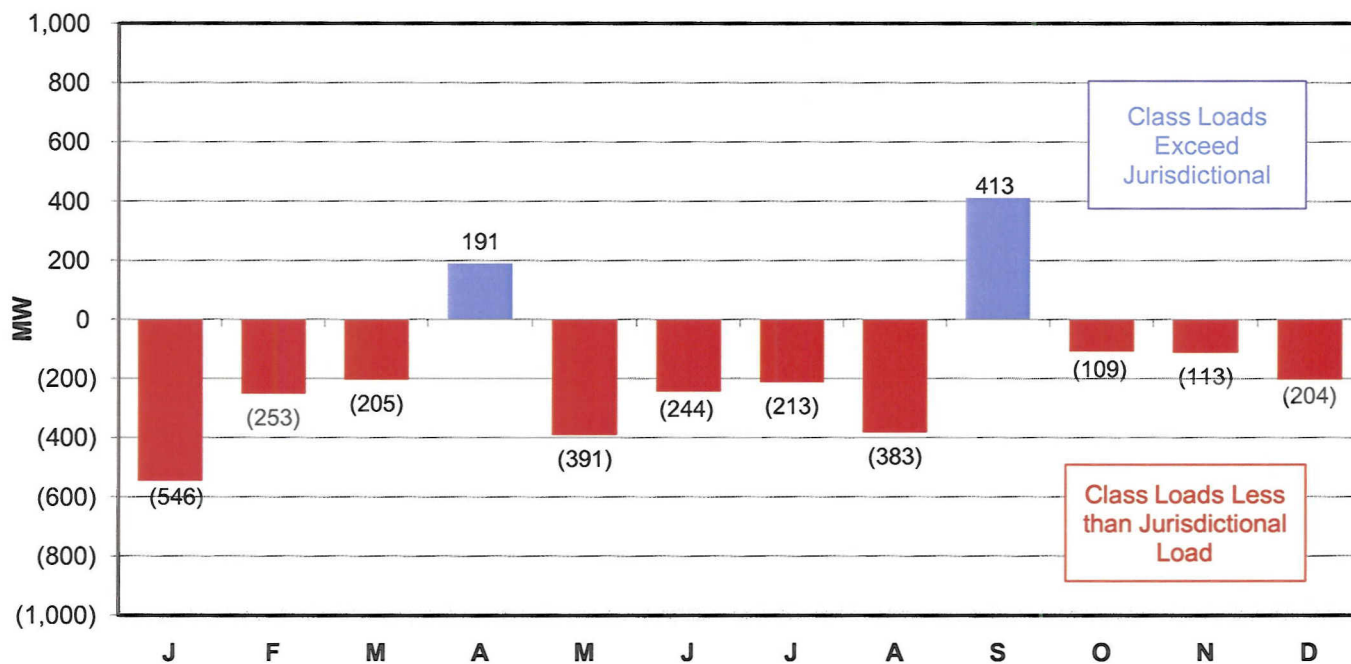
Line	Month	Total Utah Jurisdictional used in Inter-Jurisdictional Allocation (1)	Sum of Utah Retail Classes from Class COS Study (2)	Class Total Exceeds (is less than) Total Jurisdiction (3)	Difference as a Percent of Column (1) (4)
1	Jan	3,140	3,029	(111)	-4%
2	Feb	3,156	2,957	(199)	-6%
3	Mar	3,063	2,871	(192)	-6%
4	Apr	2,652	2,661	9	0%
5	May	2,948	3,136	188	6%
6	Jun	3,685	3,395	(290)	-8%
7	Jul	4,379	3,955	(424)	-10%
8	Aug	4,341	3,941	(400)	-9%
9	Sep	3,420	3,591	171	5%
10	Oct	2,630	2,951	321	12%
11	Nov	3,165	3,088	(77)	-2%
12	Dec	<u>3,187</u>	<u>3,192</u>	<u>5</u>	0%
13	Total	39,764	38,766	(998)	-3%

Sources:

RMP Data Response to UIEC Data Request 4.1-1, Page 3 of 6
RMP Data Response to UIEC Data Request 4.1-2, Page 3 of 6

ROCKY MOUNTAIN POWER

Difference Between "Top-Down" Jurisdictional Peak for Utah
and "Bottom-Up" Loads from Class Cost of Service Study
Docket No. 07-035-93
12 Months Ended December 2008



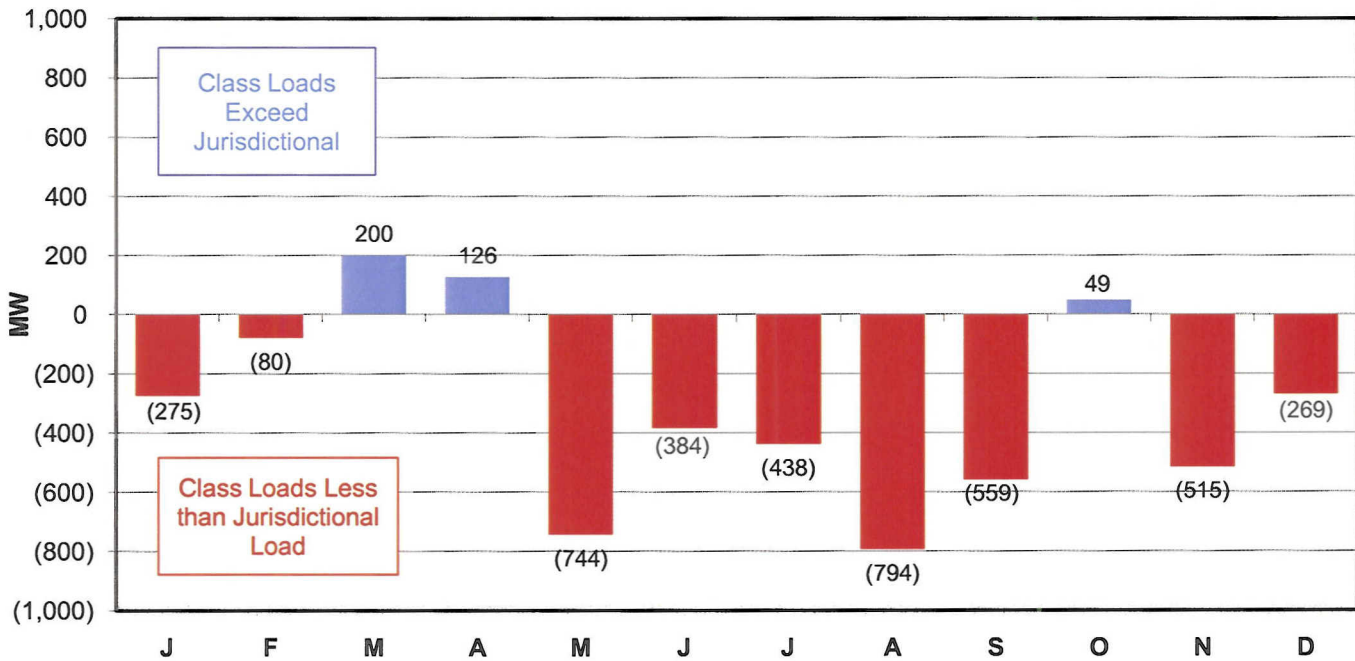
Line	Month	Total Utah Jurisdictional used in Inter-Jurisdictional Allocation (1)	Sum of Utah Retail Classes from Class COS Study (2)	Class Total Exceeds (is less than) Total Jurisdiction (3)	Difference as a Percent of Column (1) (4)
1	Jan	3,482	2,936	(546)	-16%
2	Feb	3,270	3,017	(253)	-8%
3	Mar	3,011	2,806	(205)	-7%
4	Apr	2,763	2,953	191	7%
5	May	3,250	2,858	(391)	-12%
6	Jun	3,792	3,547	(244)	-6%
7	Jul	4,320	4,106	(213)	-5%
8	Aug	4,195	3,812	(383)	-9%
9	Sep	3,563	3,976	413	12%
10	Oct	2,921	2,812	(109)	-4%
11	Nov	3,444	3,331	(113)	-3%
12	Dec	<u>3,654</u>	<u>3,450</u>	<u>(204)</u>	-6%
13	Total	41,663	39,604	(2,059)	-5%

Sources:

RMP Data Response to UIEC Data Request 4.1-1, Page 2 of 6
RMP Data Response to UIEC Data Request 4.1-2, Page 2 of 6

ROCKY MOUNTAIN POWER

Difference Between "Top-Down" Jurisdictional Peak for Utah
and "Bottom-Up" Loads from Class Cost of Service Study
Docket No. 08-035-38
12 Months Ended December 2009



Line	Month	Total Utah Jurisdictional used in Inter-Jurisdictional Allocation (1)	Sum of Utah Retail Classes from Class COS Study (2)	Class Total Exceeds (is less than) Total Jurisdiction (3)	Difference as a Percent of Column (1) (4)
1	Jan	3,150	2,875	(275)	-9%
2	Feb	3,099	3,019	(80)	-3%
3	Mar	2,894	3,094	200	7%
4	Apr	2,747	2,873	126	5%
5	May	3,631	2,887	(744)	-20%
6	Jun	4,037	3,653	(384)	-10%
7	Jul	4,356	3,918	(438)	-10%
8	Aug	4,387	3,592	(794)	-18%
9	Sep	3,886	3,327	(559)	-14%
10	Oct	2,729	2,778	49	2%
11	Nov	3,464	2,949	(515)	-15%
12	Dec	<u>3,539</u>	<u>3,270</u>	<u>(269)</u>	-8%
13	Total	41,919	38,235	(3,684)	-9%

Sources:

RMP Data Response to UIEC Data Request 4.1-1, Page 1 of 6
RMP Data Response to UIEC Data Request 4.1-2, Page 1 of 6

**Rocky Mountain Power Cost of Service Study with Class Contributions to
System Peaks Equal to Jurisdiction Contributions to System Peaks
Fixed Generation and Transmission Costs Allocated on 12CP with RMP's 25% Energy Classification
State of Utah
12 Months Ended June 2010**

	A	B	C	D	E	F	G	H	I	J	K	L	M
Line No.	Schedule No.	Description	Annual Revenue	Return on Rate Base	Rate of Return Index	Total Cost of Service	Generation Cost of Service	Transmission Cost of Service	Distribution Cost of Service	Retail Cost of Service	Misc Cost of Service	Increase (Decrease) to = ROR	Percentage Change from Current Revenues
1	1	Residential	570,908,120	8.41%	1.12	554,131,300	302,215,894	33,500,418	177,275,317	39,202,494	1,937,177	(16,776,820)	-2.94%
2	6	General Service - Large	407,879,106	7.35%	0.98	409,894,568	283,785,985	34,063,896	89,632,441	831,833	1,580,414	2,015,462	0.49%
3	8	General Service - Over 1 MW	117,330,242	8.08%	1.08	115,146,990	84,357,273	9,030,746	21,253,934	88,315	416,722	(2,183,252)	-1.86%
4	7,11,12,13	Street & Area Lighting	13,383,047	17.45%	2.33	10,966,606	2,748,522	183,849	7,646,656	357,680	29,898	(2,416,441)	-18.06%
5	9	General Service - High Voltage	159,688,687	6.33%	0.84	165,203,755	147,672,269	16,242,743	401,032	311,331	576,381	5,515,068	3.45%
6	10	Irrigation	10,962,790	3.81%	0.51	12,442,247	7,889,891	756,208	3,733,473	19,487	43,189	1,479,457	13.50%
7	15	Traffic Signals	470,828	6.74%	0.90	481,301	214,402	21,632	150,662	93,200	1,405	10,473	2.22%
8	15	Outdoor Lighting	933,273	43.80%	5.85	508,773	413,460	24,110	54,639	15,241	1,323	(424,500)	-45.49%
9	23	General Service - Small	102,234,904	7.07%	0.94	103,734,331	62,013,544	7,455,490	30,756,766	3,117,014	391,518	1,499,427	1.47%
10	25	Mobile Home Parks	850,935	9.70%	1.29	791,930	520,502	54,638	215,109	(1,218)	2,899	(59,005)	-6.93%
11	SpC	Customer A	9,343,310	2.65%	0.35	10,806,700	9,738,090	951,992	77,473	2,813	36,332	1,463,390	15.66%
12	SpC	Customer B	24,561,655	-3.25%	(0.43)	32,453,866	29,944,213	2,281,332	149,437	(11,324)	90,207	7,892,211	32.13%
13	SpC	Customer C	25,480,279	5.02%	0.67	27,464,807	24,561,215	2,673,442	127,653	6,171	96,326	1,984,528	7.79%
14		Total Utah Jurisdiction	1,444,027,176	7.49%	1.00	1,444,027,176	956,075,259	107,240,496	331,474,592	44,033,039	5,203,790	(0)	0.00%

Footnotes :

- Column C : Annual revenues based on Jul 2009 thru Jun 2010 forecasted data.
- Column D : Calculated Return on Ratebase per Jul 2009 thru Jun 2010 Embedded Cost of Service Study
- Column E : Rate of Return Index. Rate of return by rate schedule, divided by Utah Jurisdiction's normalized rate of return.
- Column F : Calculated Full Cost of Service at Jurisdictional Rate of Return per the Jul 2009 thru Jun 2010 Embedded COS Study
- Column G : Calculated Generation Cost of Service at Jurisdictional Rate of Return per the Jul 2009 thru Jun 2010 Embedded COS Study.
- Column H : Calculated Transmission Cost of Service at Jurisdictional Rate of Return per the Jul 2009 thru Jun 2010 Embedded COS Study.
- Column I : Calculated Distribution Cost of Service at Jurisdictional Rate of Return per the Jul 2009 thru Jun 2010 Embedded COS Study.
- Column J : Calculated Retail Cost of Service at Jurisdictional Rate of Return per the Jul 2009 thru Jun 2010 Embedded COS Study.
- Column K : Calculated Miscellaneous Cost of Service at Jurisdictional Rate of Return per the Jul 2009 thru Jun 2010 Embedded COS Study.
- Column L : Increase or Decrease Required to Move From Annual Revenue to Full Cost of Service Dollars.
- Column M : Increase or Decrease Required to Move From Annual Revenue to Full Cost of Service Percent.

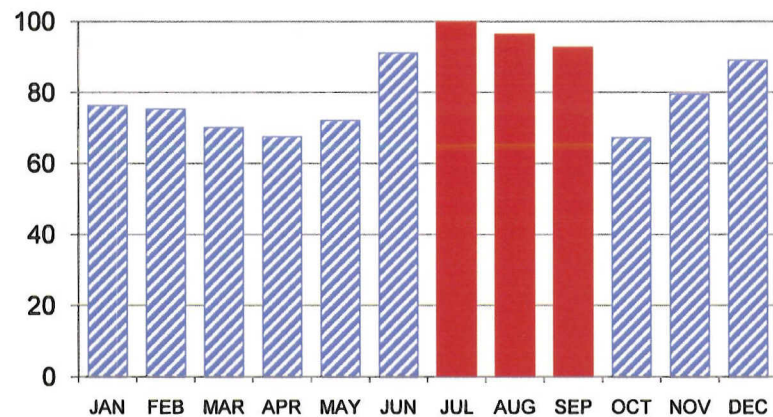
**Rocky Mountain Power Cost of Service Study with Class Contributions to
System Peaks Equal to Jurisdiction Contributions to System Peaks
Fixed Generation and Transmission Costs Allocated on 12CP with RMP's 25% Energy Classification
State of Utah
12 Months Ended June 2010**

A	B	C	D	E	F	G	H	I	J	K	L	M	
Line No.	Schedule No.	Description	Annual Revenue	Return on Rate Base	Rate of Return Index	Total Cost of Service	Generation Cost of Service	Transmission Cost of Service	Distribution Cost of Service	Retail Cost of Service	Misc Cost of Service	Increase (Decrease) to = ROR	Percentage Change from Current Revenues
1	1	Residential	570,908,120	8.41%	1.12	580,122,160	313,201,288	37,078,417	188,514,563	39,346,459	1,981,433	9,214,040	1.61%
2	6	General Service - Large	407,879,106	7.35%	0.98	430,064,512	294,741,487	37,654,151	95,214,487	834,474	1,619,913	22,185,406	5.44%
3	8	General Service - Over 1 MW	117,330,242	8.08%	1.08	120,405,639	87,345,799	9,998,024	22,553,844	80,287	427,686	3,075,397	2.62%
4	7,11,12,13	Street & Area Lighting	13,383,047	17.45%	2.33	11,312,579	2,811,529	201,854	7,908,661	360,130	30,405	(2,070,468)	-15.47%
5	9	General Service - High Voltage	159,688,687	6.33%	0.84	171,956,664	152,734,310	17,961,816	360,214	306,534	593,791	12,267,977	7.68%
6	10	Irrigation	10,962,790	3.81%	0.51	13,014,809	8,141,277	835,766	3,974,582	18,956	44,229	2,052,019	18.72%
7	15	Traffic Signals	470,828	6.74%	0.90	501,130	221,618	23,937	160,392	93,747	1,436	30,302	6.44%
8	15	Outdoor Lighting	933,273	43.80%	5.85	525,444	423,239	26,969	58,534	15,336	1,365	(407,829)	-43.70%
9	23	General Service - Small	102,234,904	7.07%	0.94	108,829,709	64,406,429	8,237,545	32,702,015	3,083,084	400,636	6,594,805	6.45%
10	25	Mobile Home Parks	850,935	9.70%	1.29	830,024	538,676	60,510	229,075	(1,206)	2,970	(20,911)	-2.46%
11	SpC	Customer A	9,343,310	2.65%	0.35	11,237,501	10,061,525	1,056,137	79,544	2,841	37,454	1,894,191	20.27%
12	SpC	Customer B	24,561,655	-3.25%	(0.43)	33,501,661	30,753,324	2,529,642	151,356	(25,942)	93,280	8,940,006	36.40%
13	SpC	Customer C	25,480,279	5.02%	0.67	28,609,007	25,415,251	2,958,709	129,569	6,243	99,235	3,128,728	12.28%
14		Total Utah Jurisdiction	1,444,027,176	7.49%	1.00	1,510,910,841	990,795,751	118,623,476	352,036,836	44,120,943	5,333,835	66,883,665	4.63%

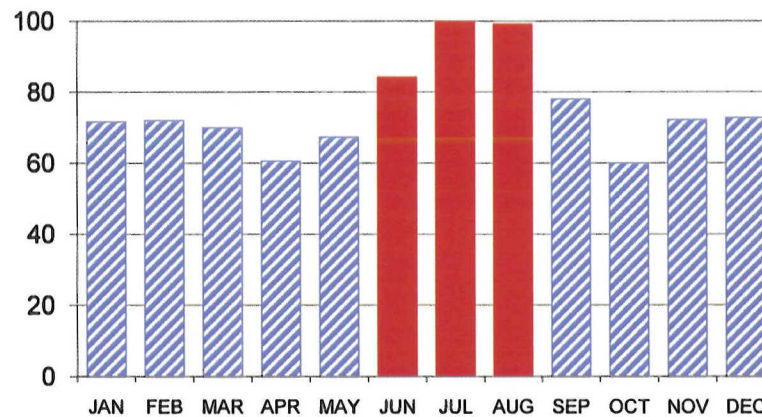
Footnotes :

- Column C : Annual revenues based on Jul 2009 thru Jun 2010 forecasted data.
- Column D : Calculated Return on Ratebase per Jul 2009 thru Jun 2010 Embedded Cost of Service Study
- Column E : Rate of Return Index. Rate of return by rate schedule, divided by Utah Jurisdiction's normalized rate of return.
- Column F : Calculated Full Cost of Service at Jurisdictional Rate of Return per the Jul 2009 thru Jun 2010 Embedded COS Study
- Column G : Calculated Generation Cost of Service at Jurisdictional Rate of Return per the Jul 2009 thru Jun 2010 Embedded COS Study.
- Column H : Calculated Transmission Cost of Service at Jurisdictional Rate of Return per the Jul 2009 thru Jun 2010 Embedded COS Study.
- Column I : Calculated Distribution Cost of Service at Jurisdictional Rate of Return per the Jul 2009 thru Jun 2010 Embedded COS Study.
- Column J : Calculated Retail Cost of Service at Jurisdictional Rate of Return per the Jul 2009 thru Jun 2010 Embedded COS Study.
- Column K : Calculated Miscellaneous Cost of Service at Jurisdictional Rate of Return per the Jul 2009 thru Jun 2010 Embedded COS Study.
- Column L : Increase or Decrease Required to Move From Annual Revenue to Full Cost of Service Dollars.
- Column M : Increase or Decrease Required to Move From Annual Revenue to Full Cost of Service Percent.

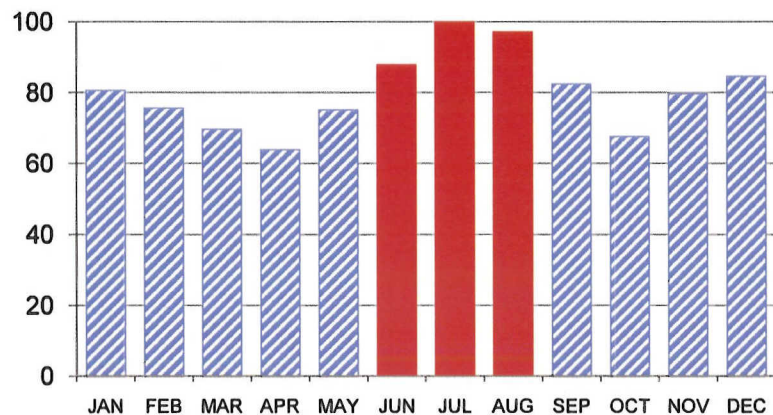
Utah Jurisdiction Monthly Load Shape



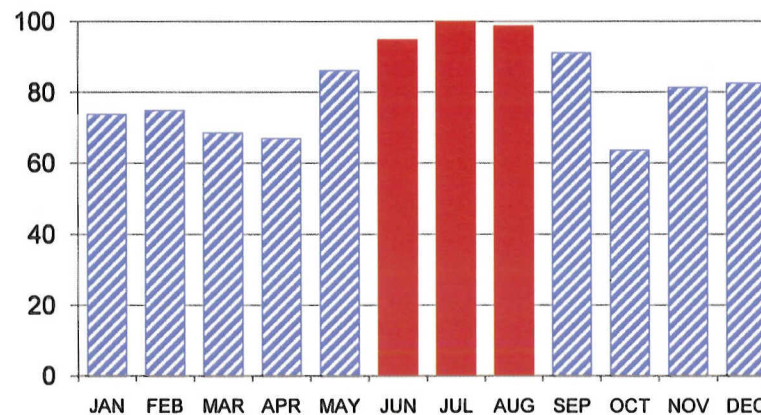
1998



YE Sep 2007



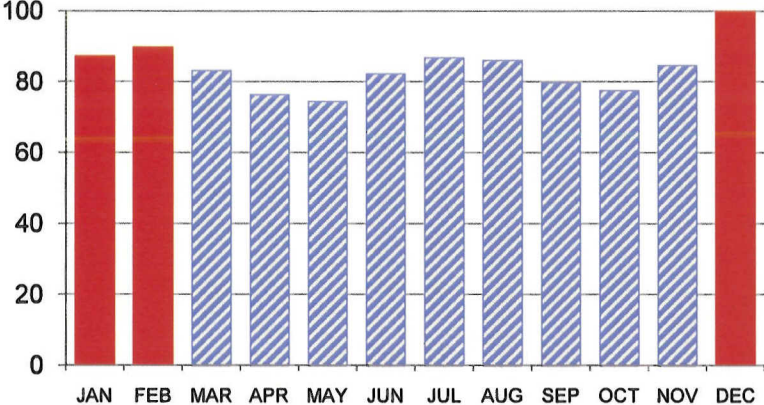
2008



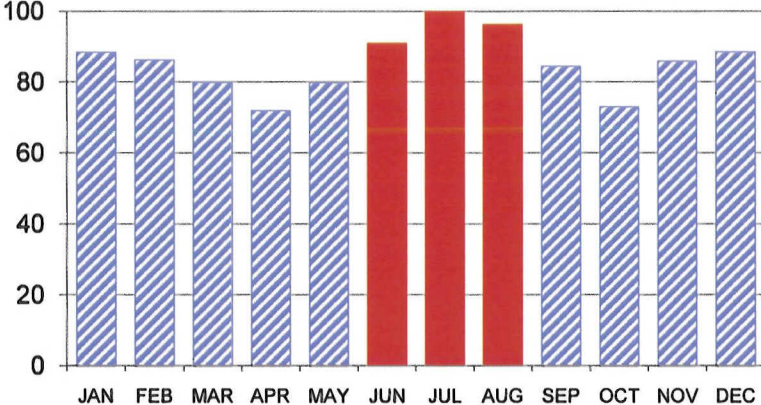
Test Year Ending June 2010

 PEAK MONTHS

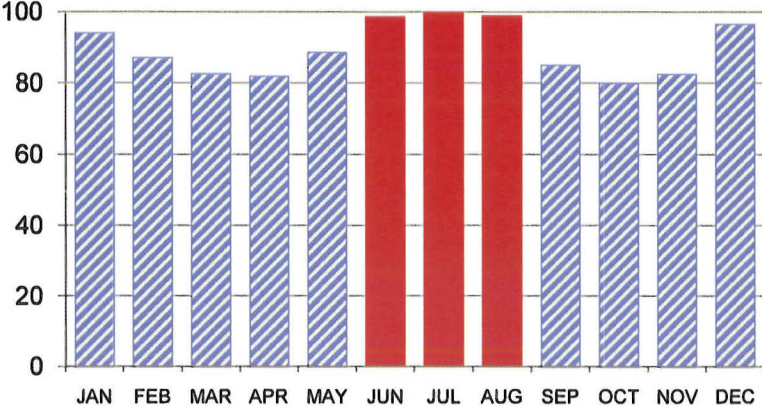
PacifiCorp Monthly Load Shape



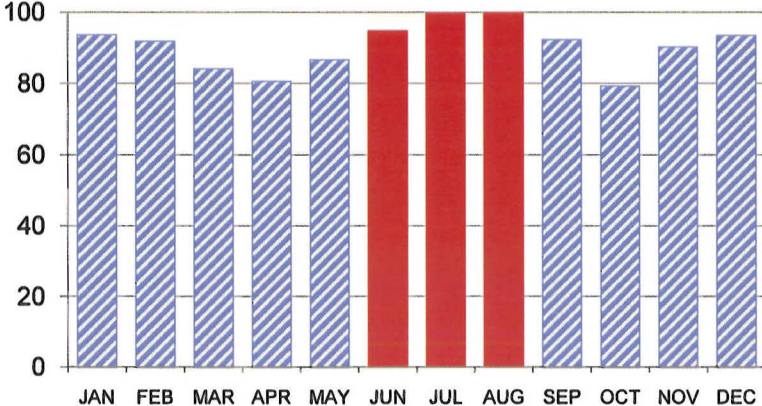
1990



2007



2008



Test Year Ending June 2010

 PEAK MONTHS

ROCKY MOUNTAIN POWER
Docket No. 09-035-23

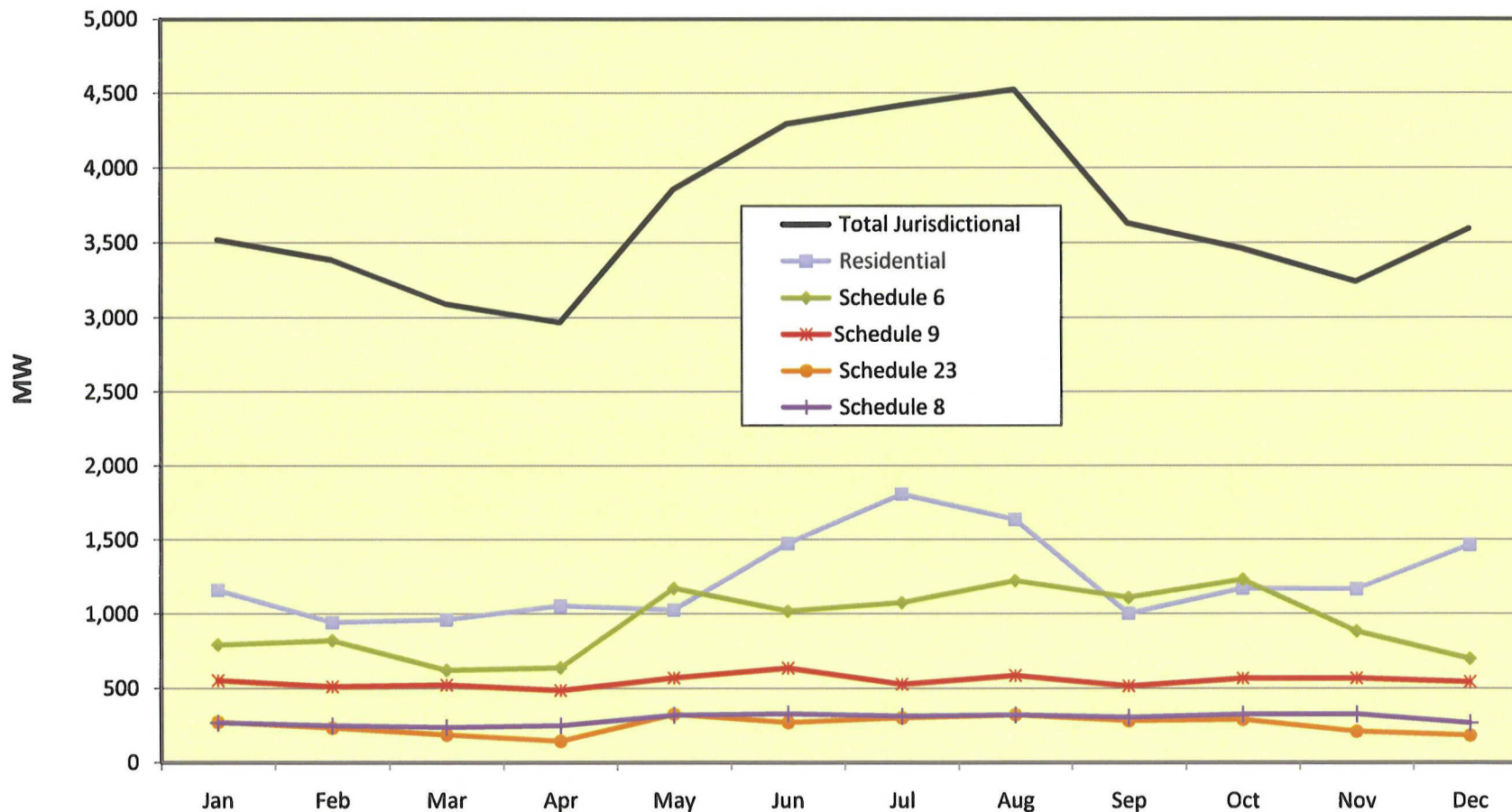
**Classification and Allocation of Generation and
Transmission Fixed Costs**

<u>Line</u>	<u>Description</u>	<u>Steam Generation</u> (1)	<u>Hydro Generation</u> (2)	<u>Other Generation</u> (3)	<u>Transmission</u> (4)
	<u>Rocky Mountain Power's Approach</u>				
	Classification				
1	Demand	75%	75%	75%	75%
2	Energy	25%	25%	25%	25%
3	Allocation to Classes	12CP*	12CP*	12CP*	12CP*
	<u>Recommended Approach</u>				
	Classification				
4	Demand	100%	100%	100%	100%
5	Energy	0%	0%	0%	0%
6	Allocation to Classes	3CP	3CP	3CP	3CP

*Weighted

Rocky Mountain Power - Utah

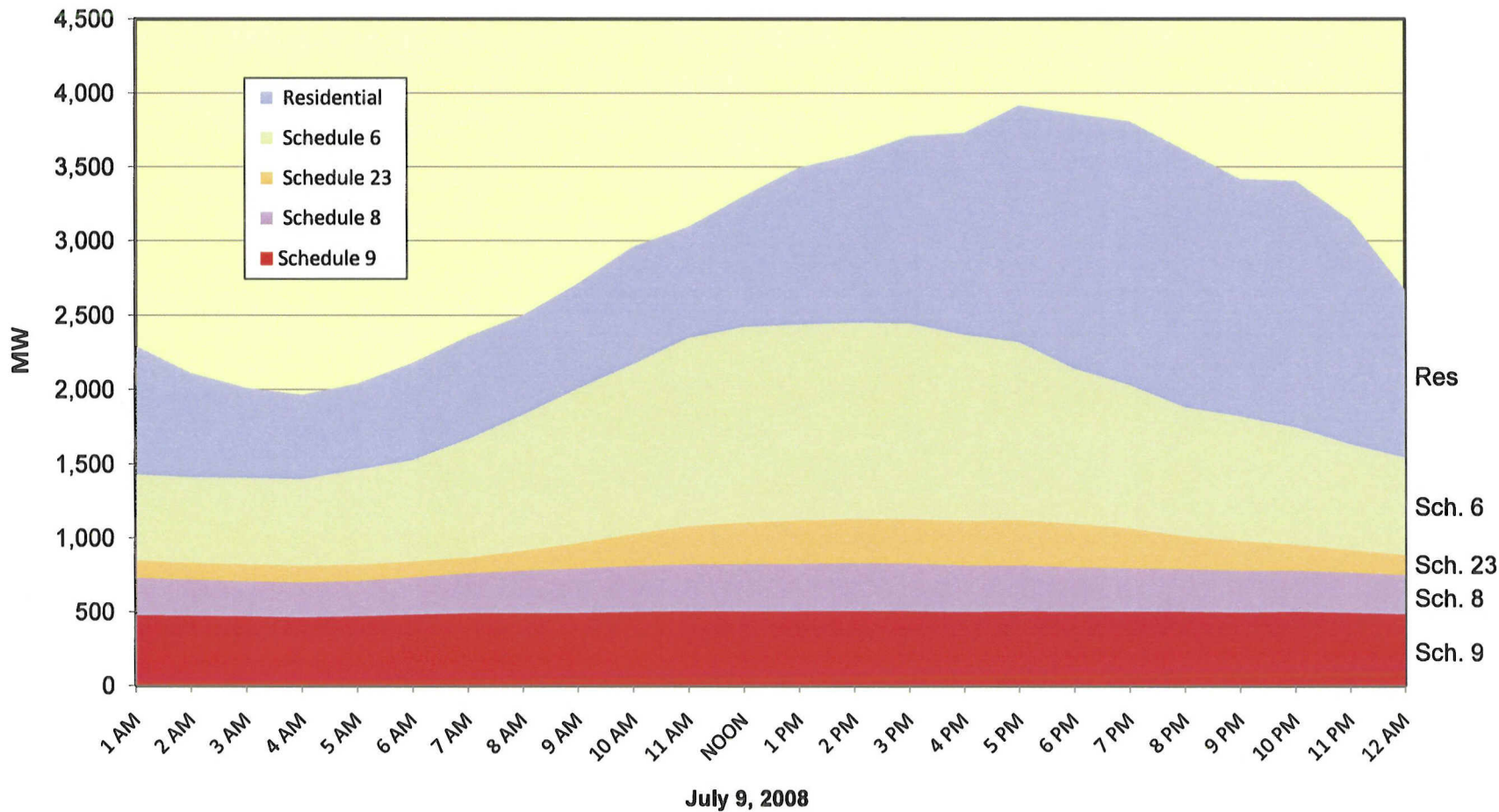
Contribution of Major Classes to Monthly Jurisdictional Peaks
Year Ending December 2008



Source: RMP Response to UIEC Data Request 2.20, Hourly Loads for individual rate schedules and total Utah Jurisdiction.
Base Year ending December 2008.

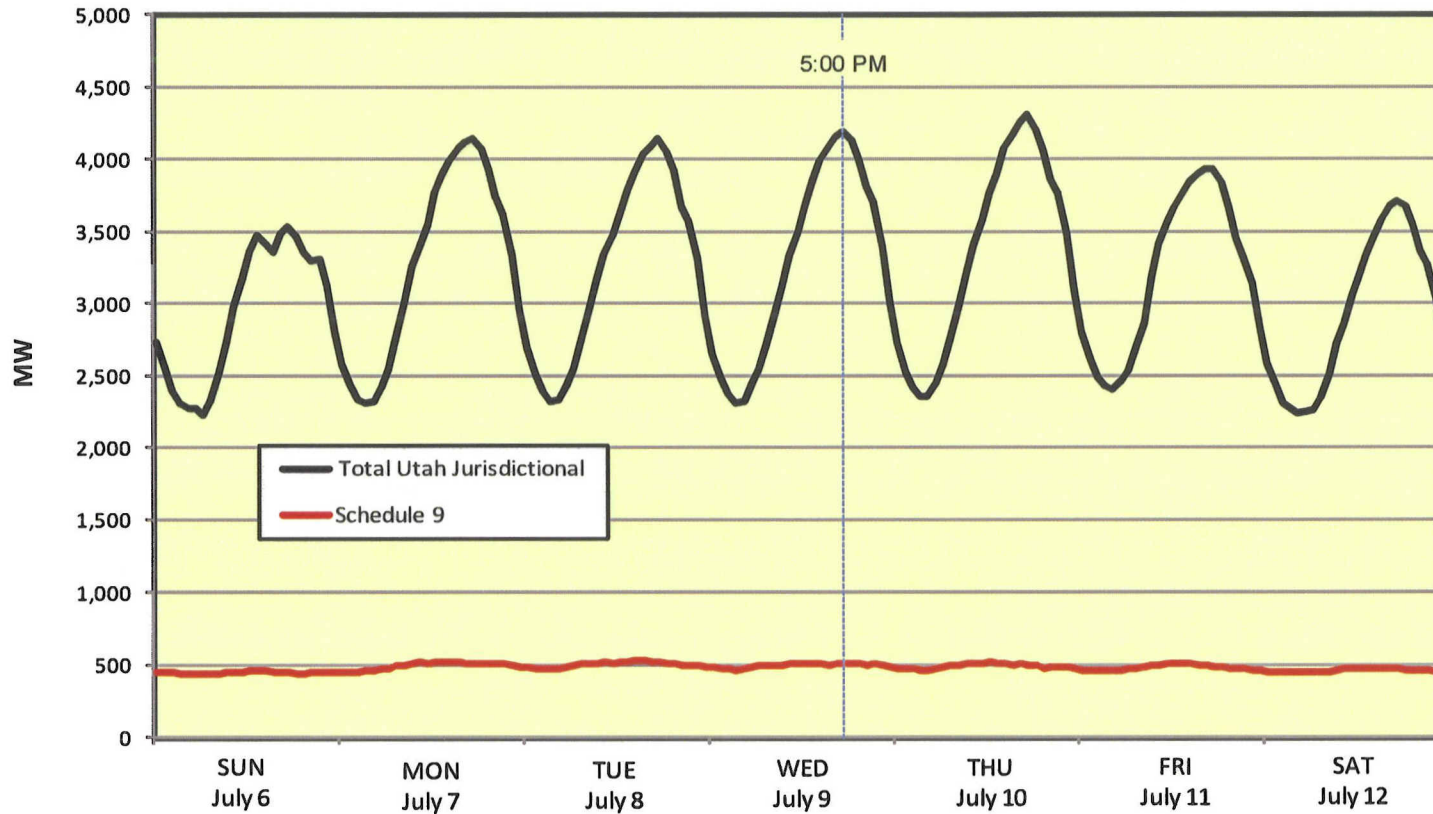
Rocky Mountain Power - Utah

Hourly Loads on System Peak Day
Year Ending December 2008



Rocky Mountain Power - Utah

Hourly Load Data for Total Utah Jurisdiction and Large Industrial Customers
for System Maximum Summer Week
July 6 - July 12, 2008



Source: RMP Response to UIEC Data Request 2.20, Hourly Loads for individual rate schedules and total Utah Jurisdiction.
Base Year ending December 2008.

**Rocky Mountain Power Cost of Service Study with Class Contributions to
System Peaks Adjusted to Equal Jurisdiction Contributions to System Peaks
Fixed Generation and Transmission Costs Allocated on 12CP without an Energy Classification
State of Utah
12 Months Ended June 2010**

A	B	C	D	E	F	G	H	I	J	K	L	M	
Line No.	Schedule No.	Description	Annual Revenue	Return on Rate Base	Rate of Return Index	Total Cost of Service	Generation Cost of Service	Transmission Cost of Service	Distribution Cost of Service	Retail Cost of Service	Misc Cost of Service	Increase (Decrease) to = ROR	Percentage Change from Current Revenues
1	1	Residential	570,908,120	8.37%	1.12	554,884,976	302,826,794	33,636,123	177,276,884	39,202,614	1,942,561	(16,023,144)	-2.81%
2	6	General Service - Large	407,879,106	6.72%	0.90	419,097,267	291,245,332	35,720,911	89,651,579	833,294	1,646,151	11,218,161	2.75%
3	8	General Service - Over 1 MW	117,330,242	8.42%	1.12	113,951,034	83,387,878	8,815,405	21,251,447	88,126	408,178	(3,379,208)	-2.88%
4	7,11,12,13	Street & Area Lighting	13,383,047	20.89%	2.79	10,456,332	2,334,914	91,970	7,645,595	357,599	26,253	(2,926,715)	-21.87%
5	9	General Service - High Voltage	159,688,687	7.33%	0.98	160,432,894	143,805,196	15,383,713	391,111	310,574	542,301	744,207	0.47%
6	10	Irrigation	10,962,790	4.66%	0.62	12,046,393	7,569,027	684,931	3,732,650	19,424	40,361	1,083,603	9.88%
7	15	Traffic Signals	470,828	7.40%	0.99	472,126	206,965	19,980	150,643	93,199	1,339	1,298	0.28%
8	15	Outdoor Lighting	933,273	69.09%	9.22	433,391	352,358	10,537	54,483	15,229	785	(499,882)	-53.56%
9	23	General Service - Small	102,234,904	6.49%	0.87	105,913,284	63,779,717	7,847,827	30,761,298	3,117,360	407,082	3,678,380	3.60%
10	25	Mobile Home Parks	850,935	10.15%	1.35	781,257	511,851	52,716	215,087	(1,220)	2,823	(69,678)	-8.19%
11	SpC	Customer A	9,343,310	3.93%	0.52	10,340,989	9,360,603	868,137	76,504	2,739	33,006	997,679	10.68%
12	SpC	Customer B	24,561,655	0.46%	0.06	28,366,119	26,630,846	1,545,303	140,936	(11,973)	61,007	3,804,464	15.49%
13	SpC	Customer C	25,480,279	5.72%	0.76	26,851,115	24,063,779	2,562,942	126,377	6,074	91,942	1,370,836	5.38%
14		Total Utah Jurisdiction	1,444,027,176	7.49%	1.00	1,444,027,176	956,075,259	107,240,496	331,474,592	44,033,039	5,203,790	0	0.00%

Footnotes :

- Column C : Annual revenues based on Jul 2009 thru Jun 2010 forecasted data.
- Column D : Calculated Return on Ratebase per Jul 2009 thru Jun 2010 Embedded Cost of Service Study
- Column E : Rate of Return Index. Rate of return by rate schedule, divided by Utah Jurisdiction's normalized rate of return.
- Column F : Calculated Full Cost of Service at Jurisdictional Rate of Return per the Jul 2009 thru Jun 2010 Embedded COS Study
- Column G : Calculated Generation Cost of Service at Jurisdictional Rate of Return per the Jul 2009 thru Jun 2010 Embedded COS Study.
- Column H : Calculated Transmission Cost of Service at Jurisdictional Rate of Return per the Jul 2009 thru Jun 2010 Embedded COS Study.
- Column I : Calculated Distribution Cost of Service at Jurisdictional Rate of Return per the Jul 2009 thru Jun 2010 Embedded COS Study.
- Column J : Calculated Retail Cost of Service at Jurisdictional Rate of Return per the Jul 2009 thru Jun 2010 Embedded COS Study.
- Column K : Calculated Miscellaneous Cost of Service at Jurisdictional Rate of Return per the Jul 2009 thru Jun 2010 Embedded COS Study.
- Column L : Increase or Decrease Required to Move From Annual Revenue to Full Cost of Service Dollars.
- Column M : Increase or Decrease Required to Move From Annual Revenue to Full Cost of Service Percent.

**Rocky Mountain Power Cost of Service Study with Class Contributions to
System Peaks Equal to Jurisdiction Contributions to System Peaks
Fixed Generation and Transmission Costs Allocated on 12CP without an Energy Classification
State of Utah
12 Months Ended June 2010**

	A	B	C	D	E	F	G	H	I	J	K	L	M
Line No.	Schedule No.	Description	Annual Revenue	Return on Rate Base	Rate of Return Index	Total Cost of Service	Generation Cost of Service	Transmission Cost of Service	Distribution Cost of Service	Retail Cost of Service	Misc Cost of Service	Increase (Decrease) to = ROR	Percentage Change from Current Revenues
1	1	Residential	570,908,120	8.37%	1.12	580,926,834	313,849,827	37,227,252	188,516,123	39,346,582	1,987,049	10,018,714	1.75%
2	6	General Service - Large	407,879,106	6.72%	0.90	439,889,915	302,660,429	39,471,484	95,233,541	835,973	1,688,489	32,010,809	7.85%
3	8	General Service - Over 1 MW	117,330,242	8.42%	1.12	119,128,758	86,316,676	9,761,849	22,551,368	80,092	418,774	1,798,516	1.53%
4	7,11,12,13	Street & Area Lighting	13,383,047	20.89%	2.79	10,767,777	2,372,438	101,086	7,907,604	360,047	26,603	(2,615,270)	-19.54%
5	9	General Service - High Voltage	159,688,687	7.33%	0.98	166,862,981	148,628,974	17,019,675	350,336	305,757	558,240	7,174,294	4.49%
6	10	Irrigation	10,962,790	4.66%	0.62	12,592,169	7,800,643	757,593	3,973,762	18,891	41,279	1,629,379	14.86%
7	15	Traffic Signals	470,828	7.40%	0.99	491,334	213,723	22,125	160,373	93,745	1,368	20,506	4.36%
8	15	Outdoor Lighting	933,273	69.09%	9.22	444,962	358,373	12,083	58,378	15,324	804	(488,311)	-52.32%
9	23	General Service - Small	102,234,904	6.49%	0.87	111,156,101	66,281,422	8,667,840	32,706,527	3,083,439	416,873	8,921,197	8.73%
10	25	Mobile Home Parks	850,935	10.15%	1.35	818,629	529,492	58,402	229,053	(1,208)	2,891	(32,306)	-3.80%
11	SpC	Customer A	9,343,310	3.93%	0.52	10,740,278	9,660,779	964,169	78,580	2,766	33,984	1,396,968	14.95%
12	SpC	Customer B	24,561,655	0.46%	0.06	29,137,315	27,235,809	1,722,401	142,893	(26,607)	62,819	4,575,660	18.63%
13	SpC	Customer C	25,480,279	5.72%	0.76	27,953,789	24,887,167	2,837,518	128,299	6,143	94,662	2,473,510	9.71%
14		Total Utah Jurisdiction	1,444,027,176	7.49%	1.00	1,510,910,841	990,795,751	118,623,476	352,036,836	44,120,943	5,333,835	66,883,665	4.63%

Footnotes:

- Column C : Annual revenues based on Jul 2009 thru Jun 2010 forecasted data.
Column D : Calculated Return on Ratebase per Jul 2009 thru Jun 2010 Embedded Cost of Service Study
Column E : Rate of Return Index. Rate of return by rate schedule, divided by Utah Jurisdiction's normalized rate of return.
Column F : Calculated Full Cost of Service at Jurisdictional Rate of Return per the Jul 2009 thru Jun 2010 Embedded COS Study
Column G : Calculated Generation Cost of Service at Jurisdictional Rate of Return per the Jul 2009 thru Jun 2010 Embedded COS Study.
Column H : Calculated Transmission Cost of Service at Jurisdictional Rate of Return per the Jul 2009 thru Jun 2010 Embedded COS Study.
Column I : Calculated Distribution Cost of Service at Jurisdictional Rate of Return per the Jul 2009 thru Jun 2010 Embedded COS Study.
Column J : Calculated Retail Cost of Service at Jurisdictional Rate of Return per the Jul 2009 thru Jun 2010 Embedded COS Study.
Column K : Calculated Miscellaneous Cost of Service at Jurisdictional Rate of Return per the Jul 2009 thru Jun 2010 Embedded COS Study.
Column L : Increase or Decrease Required to Move From Annual Revenue to Full Cost of Service Dollars.
Column M : Increase or Decrease Required to Move From Annual Revenue to Full Cost of Service Percent.

**Rocky Mountain Power Cost of Service Study with Class Contributions to
System Peaks Adjusted to Equal Jurisdiction Contributions to System Peaks
Fixed Generation and Transmission Costs Allocated on 3CP without an Energy Classification
State of Utah
12 Months Ended June 2010**

A	B	C	D	E	F	G	H	I	J	K	L	M	
Line No.	Schedule No.	Description	Annual Revenue	Return on Rate Base	Rate of Return Index	Total Cost of Service	Generation Cost of Service	Transmission Cost of Service	Distribution Cost of Service	Retail Cost of Service	Misc Cost of Service	Increase (Decrease) to = ROR	Percentage Change from Current Revenues
1	1	Residential	570,908,120	7.08%	0.94	578,955,602	322,358,505	37,976,221	177,327,011	39,206,440	2,087,426	8,047,482	1.41%
2	6	General Service - Large	407,879,106	6.82%	0.91	417,619,546	290,046,260	35,454,468	89,648,501	833,059	1,637,258	9,740,440	2.39%
3	8	General Service - Over 1 MW	117,330,242	9.80%	1.31	109,443,632	79,730,422	8,002,690	21,242,060	87,409	381,051	(7,886,610)	-6.72%
4	7, 11, 12, 13	Street & Area Lighting	13,383,047	25.62%	3.42	9,901,192	1,884,455	(8,125)	7,644,439	357,511	22,912	(3,481,855)	-26.02%
5	9	General Service - High Voltage	159,688,687	11.29%	1.51	145,296,042	131,522,648	12,654,436	359,589	308,167	451,202	(14,392,645)	-9.01%
6	10	Irrigation	10,962,790	-1.13%	(0.15)	15,795,375	10,611,076	1,360,898	3,740,457	20,020	62,924	4,832,585	44.08%
7	15	Traffic Signals	470,828	9.79%	1.31	443,082	183,398	14,743	150,582	93,194	1,165	(27,746)	-5.89%
8	15	Outdoor Lighting	933,273	162.66%	21.71	342,522	278,623	(5,848)	54,293	15,215	238	(590,751)	-63.30%
9	23	General Service - Small	102,234,904	4.93%	0.66	112,436,331	69,072,736	9,023,977	30,774,882	3,118,397	446,340	10,201,427	9.98%
10	25	Mobile Home Parks	850,935	10.27%	1.37	778,551	509,655	52,228	215,081	(1,220)	2,807	(72,384)	-8.51%
11	SpC	Customer A	9,343,310	8.00%	1.07	9,227,695	8,457,239	667,403	74,186	2,562	26,305	(115,615)	-1.24%
12	SpC	Customer B	24,561,655	110.23%	14.71	18,251,999	18,423,911	(278,342)	119,874	(13,581)	137	(6,309,656)	-25.69%
13	SpC	Customer C	25,480,279	7.41%	0.99	25,535,607	22,996,332	2,325,747	123,638	5,865	84,025	55,328	0.22%
14		Total Utah Jurisdiction	1,444,027,176	7.49%	1.00	1,444,027,176	956,075,259	107,240,496	331,474,592	44,033,039	5,203,790	(0)	0.00%

Footnotes :

- Column C : Annual revenues based on Jul 2009 thru Jun 2010 forecasted data.
Column D : Calculated Return on Ratebase per Jul 2009 thru Jun 2010 Embedded Cost of Service Study
Column E : Rate of Return Index. Rate of return by rate schedule, divided by Utah Jurisdiction's normalized rate of return.
Column F : Calculated Full Cost of Service at Jurisdictional Rate of Return per the Jul 2009 thru Jun 2010 Embedded COS Study
Column G : Calculated Generation Cost of Service at Jurisdictional Rate of Return per the Jul 2009 thru Jun 2010 Embedded COS Study.
Column H : Calculated Transmission Cost of Service at Jurisdictional Rate of Return per the Jul 2009 thru Jun 2010 Embedded COS Study.
Column I : Calculated Distribution Cost of Service at Jurisdictional Rate of Return per the Jul 2009 thru Jun 2010 Embedded COS Study.
Column J : Calculated Retail Cost of Service at Jurisdictional Rate of Return per the Jul 2009 thru Jun 2010 Embedded COS Study.
Column K : Calculated Miscellaneous Cost of Service at Jurisdictional Rate of Return per the Jul 2009 thru Jun 2010 Embedded COS Study.
Column L : Increase or Decrease Required to Move From Annual Revenue to Full Cost of Service Dollars.
Column M : Increase or Decrease Required to Move From Annual Revenue to Full Cost of Service Percent.

**Rocky Mountain Power Cost of Service Study with Class Contributions to
System Peaks Equal to Jurisdiction Contributions to System Peaks
Fixed Generation and Transmission Costs Allocated on 3CP without an Energy Classification
State of Utah
12 Months Ended June 2010**

	A	B	C	D	E	F	G	H	I	J	K	L	M
Line No.	Schedule No.	Description	Annual Revenue	Return on Rate Base	Rate of Return Index	Total Cost of Service	Generation Cost of Service	Transmission Cost of Service	Distribution Cost of Service	Retail Cost of Service	Misc Cost of Service	Increase (Decrease) to = ROR	Percentage Change from Current Revenues
1	1	Residential	570,908,120	7.08%	0.94	606,624,423	334,584,404	41,987,257	188,566,029	39,350,508	2,136,224	35,716,303	6.26%
2	6	General Service - Large	407,879,106	6.82%	0.91	438,312,313	301,387,511	39,179,262	95,230,477	835,732	1,679,331	30,433,207	7.46%
3	8	General Service - Over 1 MW	117,330,242	9.80%	1.31	114,316,696	82,433,974	8,870,503	22,542,023	79,356	390,840	(3,013,546)	-2.57%
4	7,11,12,13	Street & Area Lighting	13,383,047	25.62%	3.42	10,175,114	1,894,237	(8,694)	7,906,453	359,956	23,163	(3,207,932)	-23.97%
5	9	General Service - High Voltage	159,688,687	11.29%	1.51	150,703,011	135,590,002	14,026,338	318,953	303,288	464,431	(8,985,676)	-5.63%
6	10	Irrigation	10,962,790	-1.13%	(0.15)	16,594,548	11,030,038	1,498,960	3,981,535	19,503	64,513	5,631,758	51.37%
7	15	Traffic Signals	470,828	9.79%	1.31	460,327	188,704	16,382	160,312	93,741	1,188	(10,501)	-2.23%
8	15	Outdoor Lighting	933,273	162.66%	21.71	347,950	280,097	(5,887)	58,190	15,309	241	(585,323)	-62.72%
9	23	General Service - Small	102,234,904	4.93%	0.66	118,120,049	71,900,413	9,957,784	32,720,051	3,084,503	457,299	15,885,145	15.54%
10	25	Mobile Home Parks	850,935	10.27%	1.37	815,740	527,161	57,867	229,047	(1,208)	2,874	(35,195)	-4.14%
11	SpC	Customer A	9,343,310	8.00%	1.07	9,551,735	8,701,781	744,013	76,272	2,584	27,084	208,425	2.23%
12	SpC	Customer B	24,561,655	110.23%	14.71	18,339,569	18,523,447	(277,683)	121,923	(28,257)	138	(6,222,086)	-25.33%
13	SpC	Customer C	25,480,279	7.41%	0.99	26,549,364	23,753,981	2,577,374	125,571	5,928	86,509	1,069,085	4.20%
14		Total Utah Jurisdiction	1,444,027,176	7.49%	1.00	1,510,910,841	990,795,751	118,623,476	352,036,836	44,120,943	5,333,835	66,883,665	4.63%

Footnotes:

- Column C : Annual revenues based on Jul 2009 thru Jun 2010 forecasted data.
Column D : Calculated Return on Ratebase per Jul 2009 thru Jun 2010 Embedded Cost of Service Study
Column E : Rate of Return Index. Rate of return by rate schedule, divided by Utah Jurisdiction's normalized rate of return.
Column F : Calculated Full Cost of Service at Jurisdictional Rate of Return per the Jul 2009 thru Jun 2010 Embedded COS Study
Column G : Calculated Generation Cost of Service at Jurisdictional Rate of Return per the Jul 2009 thru Jun 2010 Embedded COS Study.
Column H : Calculated Transmission Cost of Service at Jurisdictional Rate of Return per the Jul 2009 thru Jun 2010 Embedded COS Study.
Column I : Calculated Distribution Cost of Service at Jurisdictional Rate of Return per the Jul 2009 thru Jun 2010 Embedded COS Study.
Column J : Calculated Retail Cost of Service at Jurisdictional Rate of Return per the Jul 2009 thru Jun 2010 Embedded COS Study.
Column K : Calculated Miscellaneous Cost of Service at Jurisdictional Rate of Return per the Jul 2009 thru Jun 2010 Embedded COS Study.
Column L : Increase or Decrease Required to Move From Annual Revenue to Full Cost of Service Dollars.
Column M : Increase or Decrease Required to Move From Annual Revenue to Full Cost of Service Percent.

**Rocky Mountain Power Cost of Service Study with Class Contributions to System Peaks Adjusted to Equal Jurisdiction Contributions to System Peaks
Fixed Generation and Transmission Costs Allocated on an Average & Excess without an Energy Classification
State of Utah
12 Months Ended June 2010**

A	B	C	D	E	F	G	H	I	J	K	L	M	
Line No.	Schedule No.	Description	Annual Revenue	Return on Rate Base	Rate of Return Index	Total Cost of Service	Generation Cost of Service	Transmission Cost of Service	Distribution Cost of Service	Retail Cost of Service	Misc Cost of Service	Increase (Decrease) to = ROR	Percentage Change from Current Revenues
1	1	Residential	570,908,120	6.32%	0.84	594,570,211	335,028,720	40,791,641	177,359,528	39,208,923	2,181,400	23,662,091	4.14%
2	6	General Service - Large	407,879,106	8.26%	1.10	397,449,265	273,679,421	31,817,629	89,606,497	829,853	1,515,866	(10,429,841)	-2.56%
3	8	General Service - Over 1 MW	117,330,242	11.56%	1.54	104,408,109	75,644,430	7,094,751	21,231,574	86,609	350,746	(12,922,133)	-11.01%
4	7,11,12,13	Street & Area Lighting	13,383,047	9.09%	1.21	12,851,238	4,278,221	523,788	7,650,582	357,980	40,666	(531,809)	-3.97%
5	9	General Service - High Voltage	159,688,687	11.22%	1.50	145,510,564	131,696,718	12,693,116	360,035	308,201	452,493	(14,178,123)	-8.88%
6	10	Irrigation	10,962,790	-1.82%	(0.24)	16,492,326	11,176,605	1,486,563	3,741,908	20,131	67,119	5,529,536	50.44%
7	15	Traffic Signals	470,828	9.39%	1.25	447,513	186,993	15,542	150,592	93,195	1,191	(23,315)	-4.95%
8	15	Outdoor Lighting	933,273	52.85%	7.05	475,222	386,301	18,079	54,570	15,236	1,037	(458,051)	-49.08%
9	23	General Service - Small	102,234,904	7.70%	1.03	101,519,562	60,214,504	7,055,609	30,752,148	3,116,661	380,640	(715,342)	-0.70%
10	25	Mobile Home Parks	850,935	23.68%	3.16	580,629	349,055	16,542	214,669	(1,252)	1,616	(270,306)	-31.77%
11	SpC	Customer A	9,343,310	6.44%	0.86	9,600,228	8,759,525	734,573	74,962	2,621	28,547	256,918	2.75%
12	SpC	Customer B	24,561,655	-5.06%	(0.68)	35,734,314	32,609,646	2,873,839	156,281	(10,802)	105,351	11,172,659	45.49%
13	SpC	Customer C	25,480,279	9.16%	1.22	24,387,993	22,065,120	2,118,825	121,248	5,682	77,118	(1,092,286)	-4.29%
14		Total Utah Jurisdiction	1,444,027,176	7.49%	1.00	1,444,027,176	956,075,259	107,240,496	331,474,592	44,033,039	5,203,790	(0)	0.00%

Footnotes:

- Column C : Annual revenues based on Jul 2009 thru Jun 2010 forecasted data.
- Column D : Calculated Return on Ratebase per Jul 2009 thru Jun 2010 Embedded Cost of Service Study
- Column E : Rate of Return Index. Rate of return by rate schedule, divided by Utah Jurisdiction's normalized rate of return.
- Column F : Calculated Full Cost of Service at Jurisdictional Rate of Return per the Jul 2009 thru Jun 2010 Embedded COS Study
- Column G : Calculated Generation Cost of Service at Jurisdictional Rate of Return per the Jul 2009 thru Jun 2010 Embedded COS Study.
- Column H : Calculated Transmission Cost of Service at Jurisdictional Rate of Return per the Jul 2009 thru Jun 2010 Embedded COS Study.
- Column I : Calculated Distribution Cost of Service at Jurisdictional Rate of Return per the Jul 2009 thru Jun 2010 Embedded COS Study.
- Column J : Calculated Retail Cost of Service at Jurisdictional Rate of Return per the Jul 2009 thru Jun 2010 Embedded COS Study.
- Column K : Calculated Miscellaneous Cost of Service at Jurisdictional Rate of Return per the Jul 2009 thru Jun 2010 Embedded COS Study.
- Column L : Increase or Decrease Required to Move From Annual Revenue to Full Cost of Service Dollars.
- Column M : Increase or Decrease Required to Move From Annual Revenue to Full Cost of Service Percent.

**Rocky Mountain Power Cost of Service Study with Class Contributions to System Peaks Equal to Jurisdiction Contributions to System Peaks
Fixed Generation and Transmission Costs Allocated on an Average & Excess without an Energy Classification
State of Utah
12 Months Ended June 2010**

Line No.	A	B	C	D	E	F	G	H	I	J	K	L	M
	Schedule No.	Description	Annual Revenue	Return on Rate Base	Rate of Return Index	Total Cost of Service	Generation Cost of Service	Transmission Cost of Service	Distribution Cost of Service	Retail Cost of Service	Misc Cost of Service	Increase (Decrease) to = ROR	Percentage Change from Current Revenues
1	1	Residential	570,908,120	6.32%	0.84	623,294,442	348,034,918	45,075,071	188,598,403	39,353,055	2,232,994	52,386,322	9.18%
2	6	General Service - Large	407,879,106	8.26%	1.10	416,778,699	284,012,715	35,190,557	95,188,658	832,442	1,554,328	8,899,593	2.18%
3	8	General Service - Over 1 MW	117,330,242	11.56%	1.54	108,940,815	78,096,345	7,874,720	22,531,583	78,535	359,633	(8,389,427)	-7.15%
4	7,11,12,13	Street & Area Lighting	13,383,047	9.09%	1.21	13,324,558	4,435,424	574,682	7,912,569	360,437	41,445	(58,489)	-0.44%
5	9	General Service - High Voltage	159,688,687	11.22%	1.50	150,932,033	135,774,792	14,068,760	319,398	303,323	465,760	(8,756,654)	-5.48%
6	10	Irrigation	10,962,790	-1.82%	(0.24)	17,338,608	11,630,396	1,636,783	3,982,980	19,617	68,832	6,375,818	58.16%
7	15	Traffic Signals	470,828	9.39%	1.25	465,057	192,521	17,258	160,322	93,741	1,216	(5,771)	-1.23%
8	15	Outdoor Lighting	933,273	52.85%	7.05	489,620	394,406	20,355	58,465	15,331	1,063	(443,653)	-47.54%
9	23	General Service - Small	102,234,904	7.70%	1.03	106,465,402	62,496,645	7,798,975	32,697,417	3,082,722	389,643	4,230,498	4.14%
10	25	Mobile Home Parks	850,935	23.68%	3.16	604,441	356,670	18,728	228,637	(1,241)	1,647	(246,494)	-28.97%
11	SpC	Customer A	9,343,310	6.44%	0.86	9,949,448	9,022,684	817,682	77,044	2,645	29,393	606,138	6.49%
12	SpC	Customer B	24,561,655	-5.06%	(0.68)	37,003,535	33,582,815	3,179,473	158,169	(25,406)	108,483	12,441,880	50.66%
13	SpC	Customer C	25,480,279	9.16%	1.22	25,324,182	22,765,420	2,350,432	123,192	5,741	79,397	(156,097)	-0.61%
14		Total Utah Jurisdiction	1,444,027,176	7.49%	1.00	1,510,910,841	990,795,751	118,623,476	352,036,836	44,120,943	5,333,835	66,883,665	4.63%

Footnotes :

- Column C : Annual revenues based on Jul 2009 thru Jun 2010 forecasted data.
- Column D : Calculated Return on Ratebase per Jul 2009 thru Jun 2010 Embedded Cost of Service Study
- Column E : Rate of Return Index. Rate of return by rate schedule, divided by Utah Jurisdiction's normalized rate of return.
- Column F : Calculated Full Cost of Service at Jurisdictional Rate of Return per the Jul 2009 thru Jun 2010 Embedded COS Study
- Column G : Calculated Generation Cost of Service at Jurisdictional Rate of Return per the Jul 2009 thru Jun 2010 Embedded COS Study.
- Column H : Calculated Transmission Cost of Service at Jurisdictional Rate of Return per the Jul 2009 thru Jun 2010 Embedded COS Study.
- Column I : Calculated Distribution Cost of Service at Jurisdictional Rate of Return per the Jul 2009 thru Jun 2010 Embedded COS Study.
- Column J : Calculated Retail Cost of Service at Jurisdictional Rate of Return per the Jul 2009 thru Jun 2010 Embedded COS Study.
- Column K : Calculated Miscellaneous Cost of Service at Jurisdictional Rate of Return per the Jul 2009 thru Jun 2010 Embedded COS Study.
- Column L : Increase or Decrease Required to Move From Annual Revenue to Full Cost of Service Dollars.
- Column M : Increase or Decrease Required to Move From Annual Revenue to Full Cost of Service Percent.