



United States Department of the Interior



BUREAU OF LAND MANAGEMENT
West Desert District
2370 South 2300 West
Salt Lake City, UT 84119

In reply refer to:
FES 10-11
UT-020-2008-009

APR 23 2010

Dear Reader:

Enclosed is the Final Environmental Impact Statement (EIS) and Proposed Pony Express Resource Management Plan (RMP) Amendment for the Mona to Oquirrh Transmission Corridor Project. The Bureau of Land Management (BLM) prepared the Final EIS/Proposed RMP Amendment in consultation with the Utah Governor's Public Lands Policy Coordination Office, a cooperating agency, taking into account public comments received during this planning effort.

This Final EIS/Proposed RMP Amendment has been developed in accordance with the National Environmental Policy Act (NEPA) of 1969, as amended, and the Federal Land Policy and Management Act of 1976, as amended, implementing regulations, and other applicable laws. The Final EIS/Proposed RMP Amendment is based on the BLM's Preferred Alternative in the Draft EIS/Draft RMP Amendment, which was released on May 15, 2009.

The Final EIS/Proposed RMP Amendment discloses the potential impacts of granting a major right-of-way to Rocky Mountain Power (a division of PacifiCorp) for the purposes of constructing, operating, maintaining, and eventually decommissioning high-voltage transmission lines and associated facilities, and contains the Proposed RMP Amendment, which is required for BLM to allow for a grant of a right-of-way outside of an existing utility corridor designated by BLM. The Final EIS/Proposed RMP Amendment also includes a summary of changes made between the Draft EIS/Draft RMP Amendment and the Final EIS/Proposed RMP Amendment, a summary of the written and verbal comments received during the public review period for the Draft EIS/Draft RMP Amendment, and responses to the comments.

Pursuant to BLM's planning regulations at 43 CFR 1610.5-2, any person who participated in the planning process for this Proposed RMP Amendment and has an interest which may be adversely affected by the planning decisions may protest approval of the planning decisions within 30 days from the date the Environmental Protection Agency (EPA) publishes the Notice of Availability in the *Federal Register*. For further information on filing a protest, please see the accompanying protest regulations in the pages that follow (labeled as Attachment # 1). The regulations specify the required elements of your protest. Take care to document all relevant facts. As much as possible, reference or cite the planning documents or available planning records (e.g., meeting minutes or summaries, correspondence, etc.). To aid in ensuring the completeness of your protest, a protest checklist is attached to this letter (labeled as Attachment 2). If your protest does not include all of the elements outlined in 43 CFR 1610.5-2, the BLM will not respond to your protest.

Emailed and faxed protests will not be accepted as valid protests unless the protesting party also provides the original letter by either regular or overnight mail postmarked by the close of the protest period. Under these conditions, the BLM will consider the emailed or faxed protest as an advance copy and will afford it full consideration. If you wish to provide the BLM with such advance notification, please direct faxed protests to the attention of Brenda Hudgens-Williams, BLM protest coordinator, at 202-452-5112, and emailed protests to: Brenda_Hudgens-Williams@blm.gov.

All protests, including the follow-up letter to emails or faxes, must be in writing and mailed to one of the following addresses:

Regular Mail:
Director (210)
Attention: Brenda Williams
P.O. Box 66538
Washington, D.C. 20035

Overnight Mail:
Director (210)
Attention: Brenda Williams
1620 L Street, N.W., Suite 1075
Washington, D.C. 20036

Before including your address, phone number, email address, or other personal identifying information in your protest, be advised that your entire protest – including your personal identifying information – may be made publicly available at any time. While you can ask us in your protest to withhold from public review your personal identifying information, we cannot guarantee that we will be able to do so.

The BLM Director will make every attempt to promptly render a decision on each protest. The decision will be in writing and will be sent to the protesting party by certified mail, return receipt requested. The decision of the BLM Director shall be the final decision of the Department of the Interior. Responses to protest issues will be compiled and formalized in a Director's Protest Decision Report made available following issuance of the decisions.

Upon resolution of all land use plan protests, the BLM will issue an Approved RMP Amendment and Record of Decision (ROD). The Approved RMP Amendment and ROD will be mailed or made available electronically to all who participated in the planning process and will be available to all parties through the "Planning" page of the BLM national website (<http://www.blm.gov/planning>), or by mail upon request.

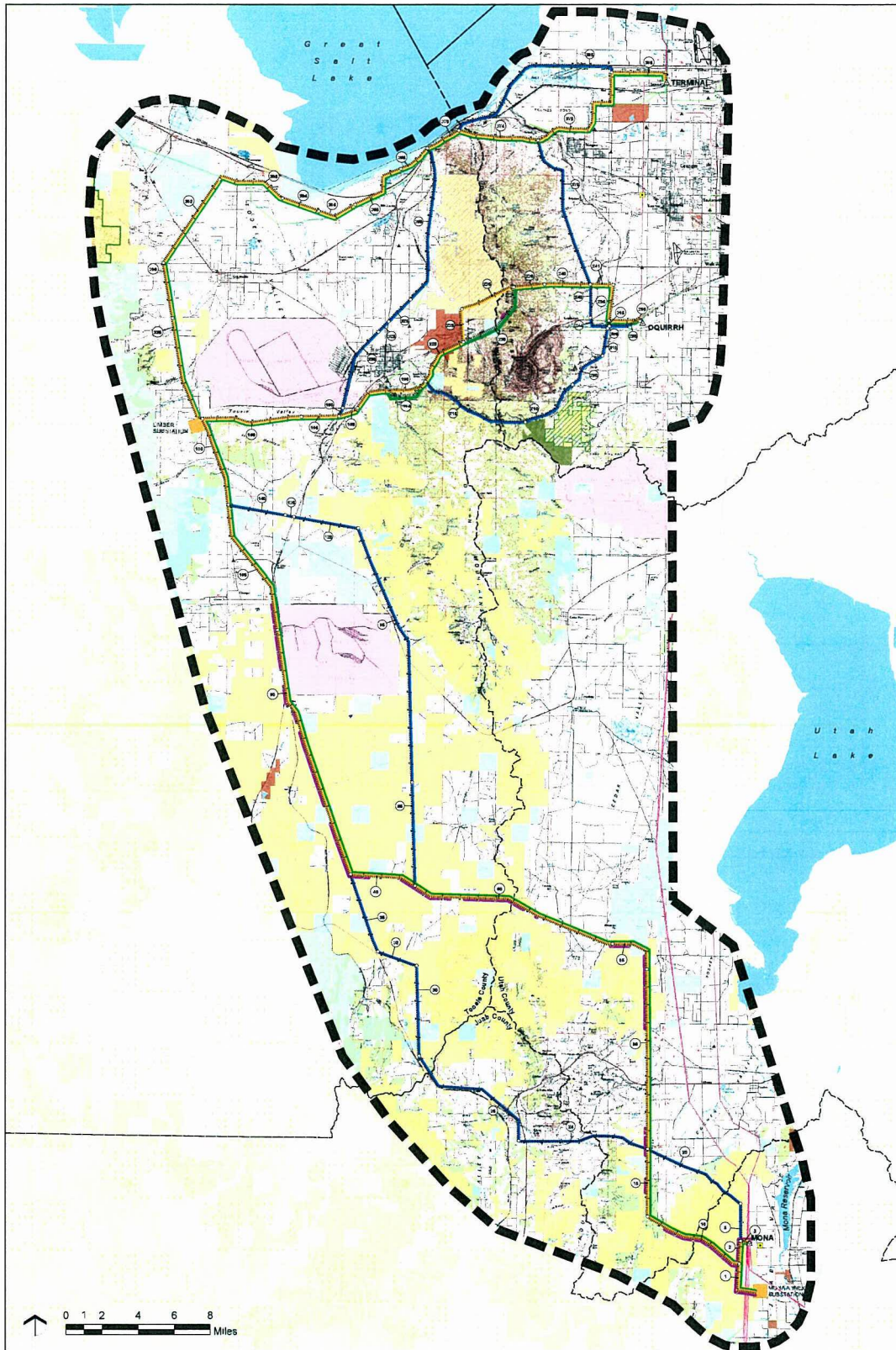
Unlike land use planning decisions, implementation decisions included in this Final EIS/Proposed RMP Amendment are not subject to protest under the BLM planning regulations, but are subject to an administrative review process, through appeals to the Office of Hearings and Appeals (OHA), Interior Board of Land Appeals (IBLA) pursuant to 43 CFR, Part 4 Subpart E. Implementation decisions generally constitute the BLM's final approval allowing on-the-ground actions to proceed. Where implementation decisions are made as part of the land use planning process, they are still subject to the appeals process or other administrative review as prescribed by specific resource program regulations once the BLM resolves the protests to land use planning decisions and issues an Approved RMP Amendment and ROD. The Approved RMP Amendment and ROD will therefore identify the implementation decisions made in the plan that may be appealed to the Office of Hearing and Appeals.

Sincerely,



Glenn A. Carpenter
West Desert District Manager

Attachment



Project Features		Land Jurisdiction		Special Management Areas		Utility Features	
	BLM's Preferred Alternative on Federal Lands		Bureau of Land Management		UDWR Wildlife Management Area		345KV Transmission Line
	Environmentally Preferred Alternative		U.S. Forest Service		Yellow Fork Canyon Regional Park		138KV Transmission Line
	Proponent's Proposed Action		Department of Defense		Rosa Canyon Ranch Open Space		Power Plant
	Alternative Routes		State Trust Land		North Oquirrh Management Area		Substation
	Proposed Substation Site		Private Land		Wilderness Study Area		Natural Gas Pipeline
	Link Tag/Substation Tag	<u>Administrative Boundary</u>		<u>Public Land Survey System</u>		<u>Transportation Features</u>	
	Link Node		County Boundary		Township and Range Line		Railroad
	Project Study Area						Major Road

FIGURE 2-3

April 2010

SOURCE: Lead Drafting: U.S. BLM 2009; County Boundary: Utah ADR2009; Township and Range: BLM/USFS; Public Land System: BLM/USFS; Major Road: USGS



