

P:\GIS\Projects\PacificCorp\mouquinn\mxd\CUP\CUP_Hazards map

Aerial Imagery Source Information

Imagery Date: 2009
 Source: DigitalGlobe
 Resolution: 0.5 Meter
 Projection: UTM
 Zone: 12
 Datum: NAD 83
 © DigitalGlobe, Inc. All Rights Reserved

General Reference Features Source Information

Fault Lines, AGRC and USGS 1990
 Landslide Areas, USGS 1987
 Liquefaction Potential, UGS and USU 1994
 Floodplains, FEMA 1995, 2009
 County Boundaries, Utah AGRC 2004
 Transmission Lines & Substation Locations, PacifiCorp

Legend

- Proposed Access Road
- Proposed Right-of way
- Proposed Conductor Pull Site
- Substation
- New Substation Site
- Unimproved Road
- Light Duty Road
- 345kV Transmission Line (Existing)
- 138kV Transmission Line (Existing)
- 46kV Subtransmission Line (Existing)
- Municipal Boundary
- Secondary Highway
- Railroad

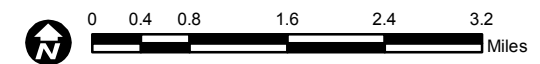
Natural Hazards

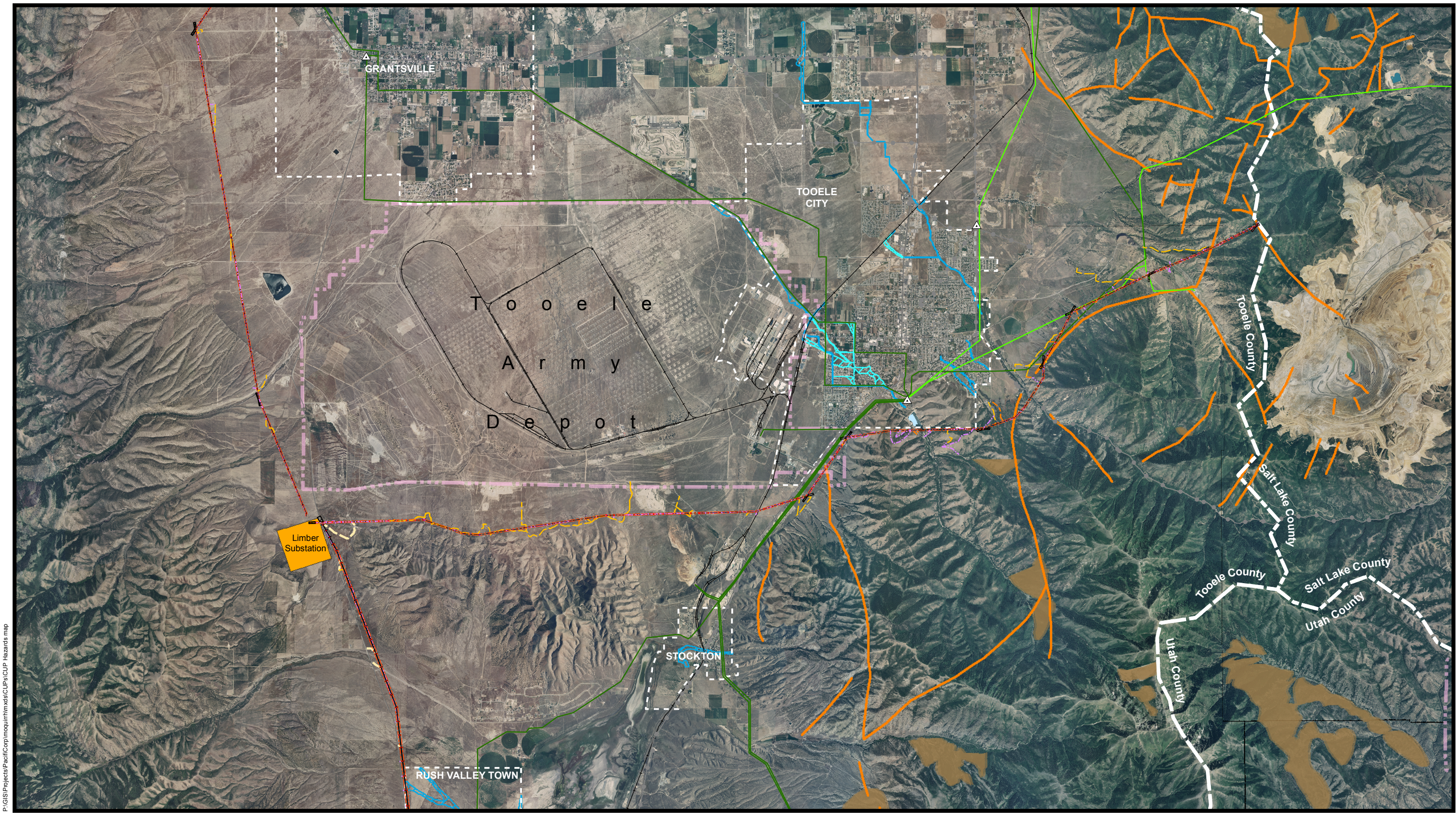
- Fault Line
- 100-year Floodplain
- 500-year Floodplain
- Moderate Liquefaction Potential
- High Liquefaction Potential
- Landslide Area

MONA TO OQUIRRH TRANSMISSION CORRIDOR PROJECT
Proposed 500kV and 345kV Transmission Lines

Tooele County
 Attachment 10 - Natural Hazards Map
 Panel 1 of 4

December 2009





P:\GIS\Projects\PacificCorp\mouquinn\mxd\CUP's\CUP Hazards map

Aerial Imagery Source Information

Imagery Date: 2009
 Source: DigitalGlobe
 Resolution: 0.5 Meter
 Projection: UTM
 Zone: 12
 Datum: NAD 83
 © DigitalGlobe, Inc. All Rights Reserved

General Reference Features Source Information

Fault Lines, AGRC and USGS 1990
 Landslide Areas, USGS 1987
 Liquefaction Potential, UGS and USU 1994
 Floodplains, FEMA 1995, 2009
 County Boundaries, Utah AGRC 2004
 Transmission Lines & Substation Locations, PacifiCorp

Legend

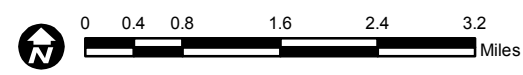
- Proposed Access Road
- Proposed Right-of way
- Proposed Conductor Pull Site
- Substation
- New Substation Site
- Unimproved Road
- Light Duty Road
- 345kV Transmission Line (Existing)
- 138kV Transmission Line (Existing)
- 46kV Subtransmission Line (Existing)
- Municipal Boundary
- Secondary Highway
- Railroad

Natural Hazards

- Fault Line
- 100-year Floodplain
- 500-year Floodplain
- Moderate Liquefaction Potential
- High Liquefaction Potential
- Landslide Area

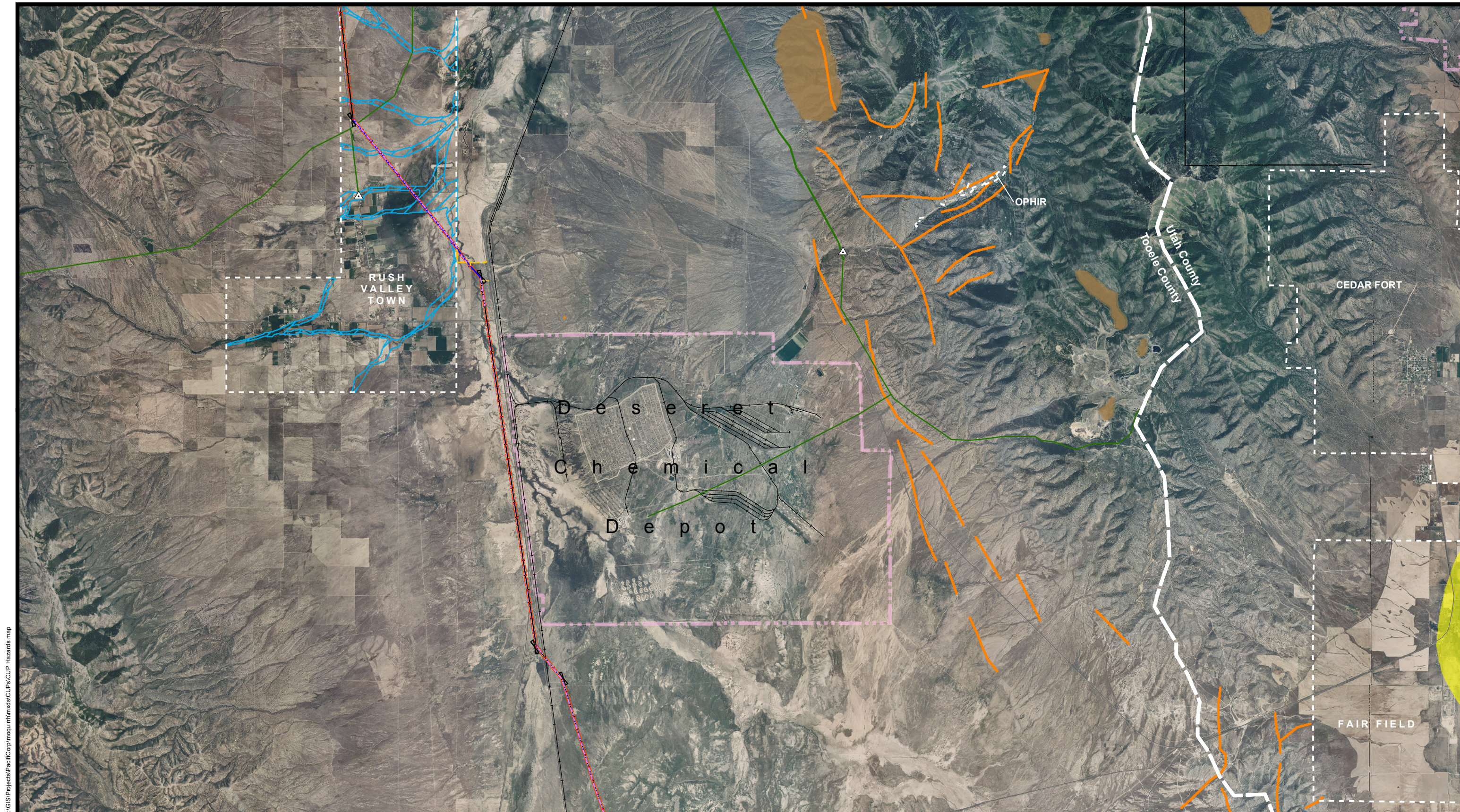
MONA TO OQUIRRH TRANSMISSION CORRIDOR PROJECT
Proposed 500kV and 345kV Transmission Lines

Tooele County
 Attachment 10 - Natural Hazards Map
 Panel 2 of 4



December 2009





P:\GIS\Projects\PacifiCorp\mou\hazards\CUP\CUP Hazards map

Aerial Imagery Source Information

Imagery Date: 2009
 Source: DigitalGlobe
 Resolution: 0.5 Meter
 Projection: UTM
 Zone: 12
 Datum: NAD 83
 © DigitalGlobe, Inc. All Rights Reserved

General Reference Features Source Information

Fault Lines, AGRC and USGS 1990
 Landslide Areas, USGS 1987
 Liquefaction Potential, UGS and USU 1994
 Floodplains, FEMA 1995, 2009
 County Boundaries, Utah AGRC 2004
 Transmission Lines & Substation Locations, PacifiCorp

Legend

- Proposed Access Road
- Proposed Right-of way
- Proposed Conductor Pull Site
- Substation
- New Substation Site
- Unimproved Road
- Light Duty Road
- 345kV Transmission Line (Existing)
- 138kV Transmission Line (Existing)
- 46kV Subtransmission Line (Existing)
- Municipal Boundary
- Secondary Highway
- Railroad

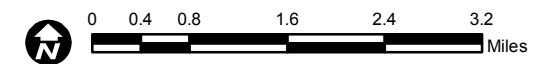
Natural Hazards

- Fault Line
- 100-year Floodplain
- 500-year Floodplain
- Moderate Liquefaction Potential
- High Liquefaction Potential
- Landslide Area

MONA TO OQUIRRH TRANSMISSION CORRIDOR PROJECT
Proposed 500kV and 345kV Transmission Lines

Tooele County
 Attachment 10 - Natural Hazards Map
 Panel 3 of 4

December 2009





P:\GIS\Projects\PacifiCorp\mouhmx\mxd\CUP\CUP_Hazards map

Aerial Imagery Source Information

Imagery Date: 2009
 Source: DigitalGlobe
 Resolution: 0.5 Meter
 Projection: UTM
 Zone: 12
 Datum: NAD 83
 © DigitalGlobe, Inc. All Rights Reserved

General Reference Features Source Information

Fault Lines, AGRC and USGS 1990
 Landslide Areas, USGS 1987
 Liquefaction Potential, UGS and USU 1994
 Floodplains, FEMA 1995, 2009
 County Boundaries, Utah AGRC 2004
 Transmission Lines & Substation Locations, PacifiCorp

Legend

- Proposed Access Road
- Proposed Right-of way
- Proposed Conductor Pull Site
- Substation
- New Substation Site
- Unimproved Road
- Light Duty Road
- 345kV Transmission Line (Existing)
- 138kV Transmission Line (Existing)
- 46kV Subtransmission Line (Existing)
- Municipal Boundary
- Secondary Highway
- Railroad

Natural Hazards

- Fault Line
- 100-year Floodplain
- 500-year Floodplain
- Moderate Liquefaction Potential
- High Liquefaction Potential
- Landslide Area

MONA TO OQUIRRH TRANSMISSION CORRIDOR PROJECT
Proposed 500kV and 345kV Transmission Lines

Tooele County
 Attachment 10 - Natural Hazards Map
 Panel 4 of 4

December 2009

