

Pole

11405001.0 238604

Pole Ownership

Rocky Mountain Power

Address

220 S 100 E American Fork, UT

Communications service drop attachment occupies additional Attachment Space

Communications service drop attachment violates NESC Rule 235(C)(1)(b)

Communications mainline attachment violates NESC Rule 235(C)(1)(b)



Pole

11405001.0 131212

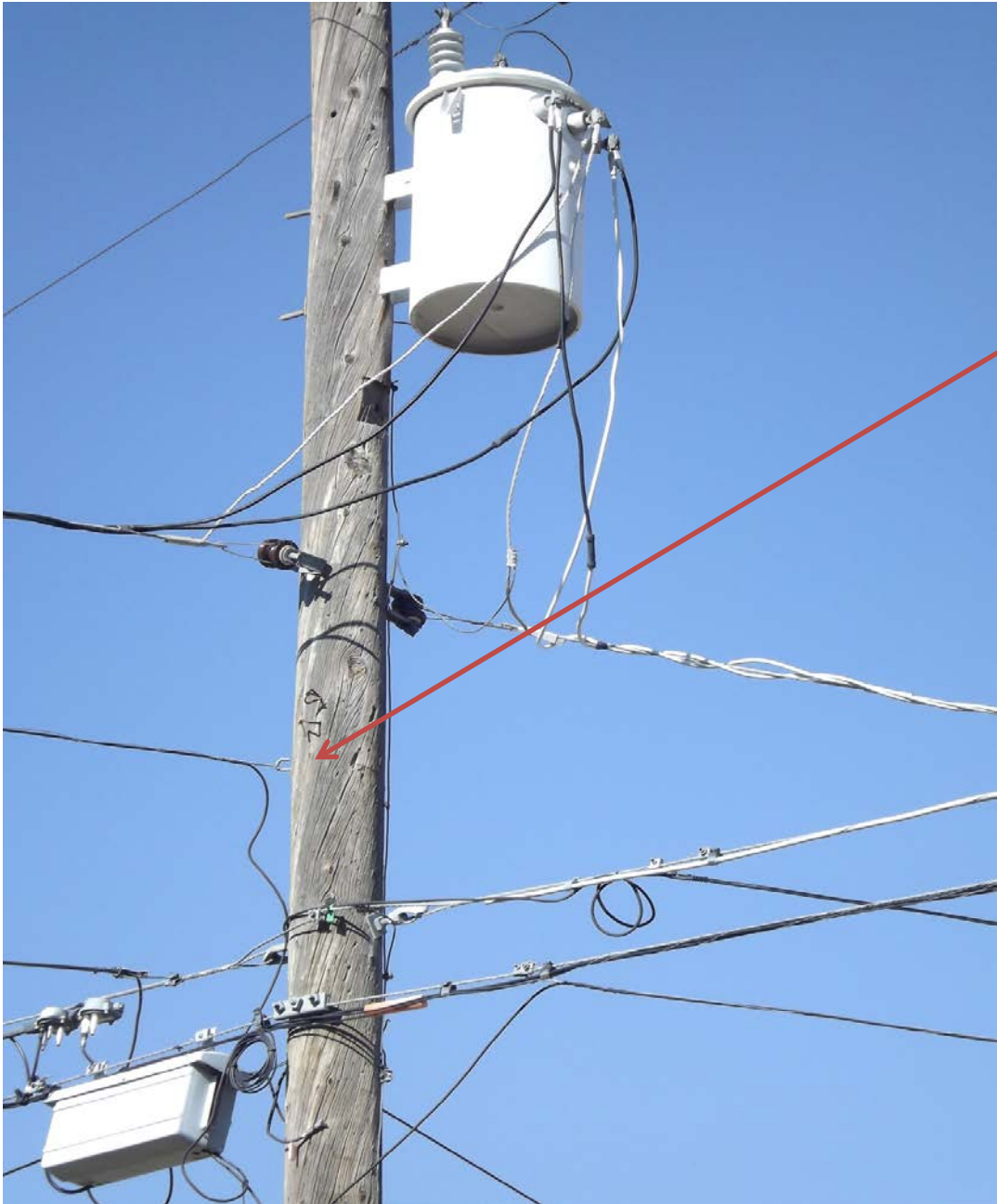
Pole Ownership

Rocky Mountain Power

Address

190 N 300 E American Fork, UT

Communications service drop attachments
violates NESC Rule 235(C)(1)(b)
and
Communications service drop attachments
occupy additional Attachment Space



Pole

11405001.0 130608

Pole Ownership

Rocky Mountain Power

Address

275 E and 500 N, American Fork, UT

Communications service drop attachment violates NESC Rule 235(C)(1)(b) and Communications service drop attachment occupies additional Attachment Space and Abandoned communications equipment needs to be removed



Pole

11405001.0 144609

Pole Ownership

Rocky Mountain Power

Address

186 W and 500 N
American Fork, UT

All communications
service drop attachments on this
pole violate NESC Rule
235(C)(1)(b)

Note: This is a service pole
with no communications
mainline attachments



Pole

11405001.0 236504

Pole Ownership

Rocky Mountain Power

Address

261 S Center St.
American Fork, UT

Communications service
drop attachments violate
NESC Rule 236 (Climbing Space)

Communications service drop
attachment violates NESC Rule
235(C)(1)(b)



Pole

11405001.0 236504(second photo)

Pole Ownership

Rocky Mountain Power

Address

261 S Center St.
American Fork, UT

Communications service
drop attachments violate
NESC Rule 236 (Climbing Space)