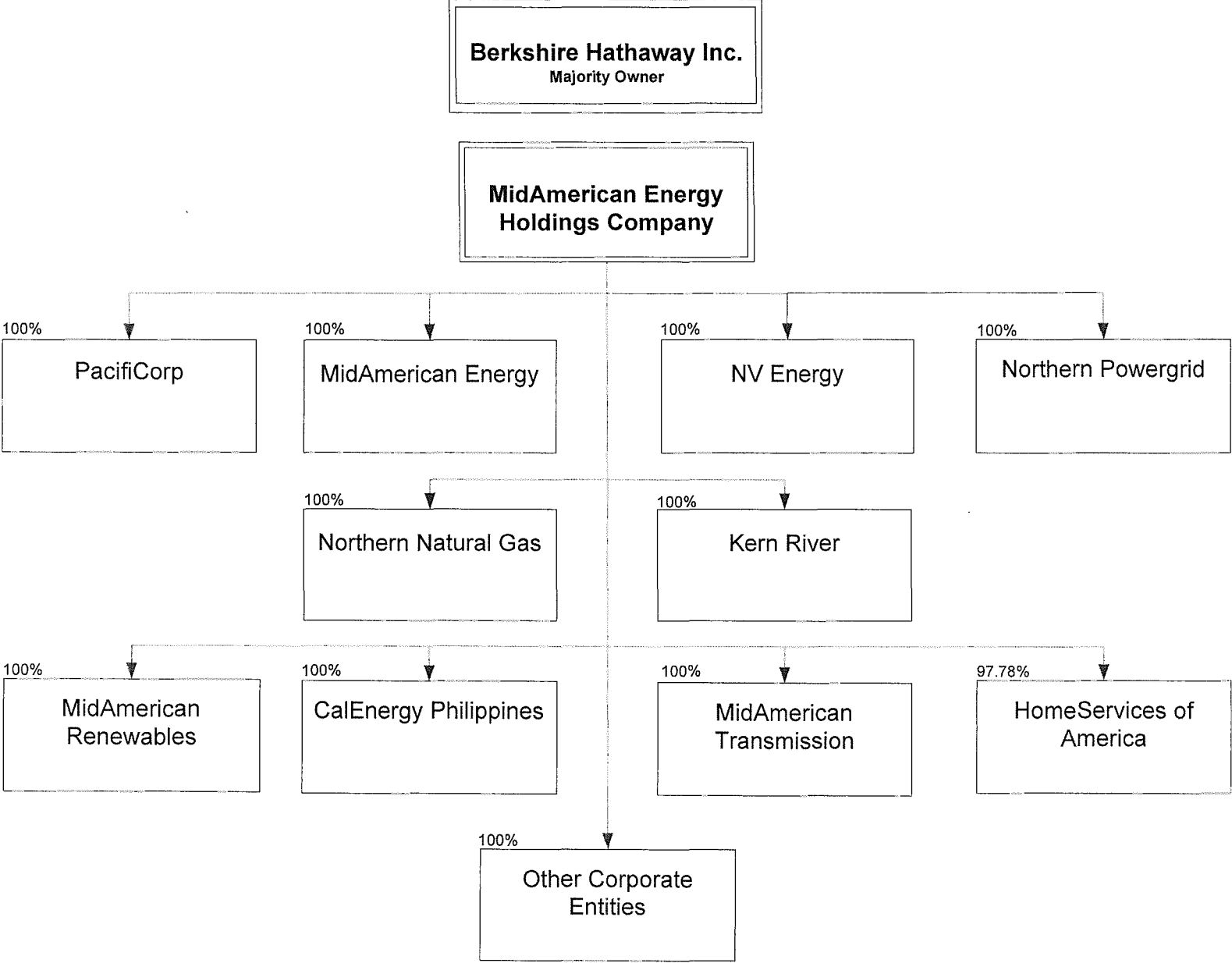
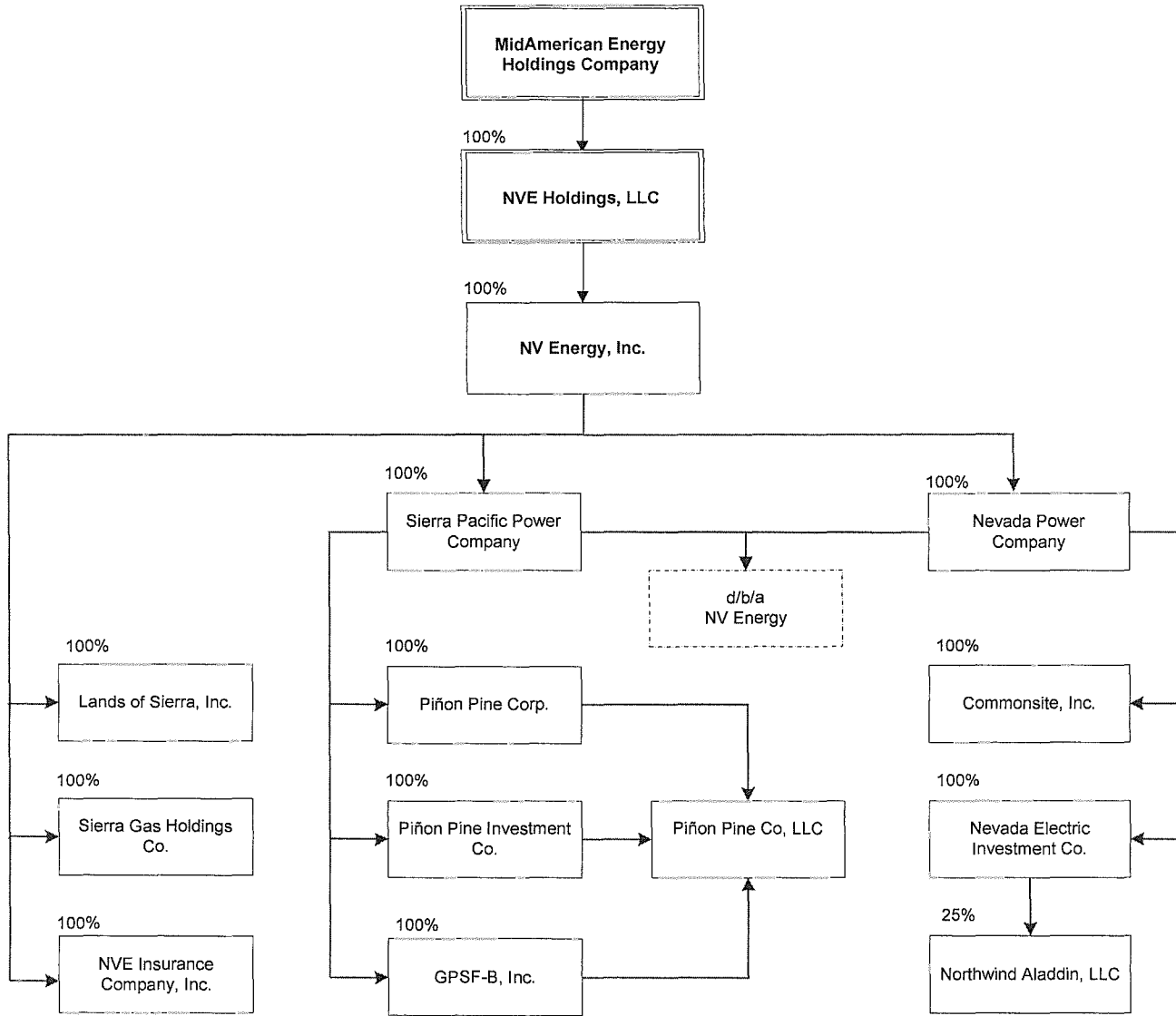


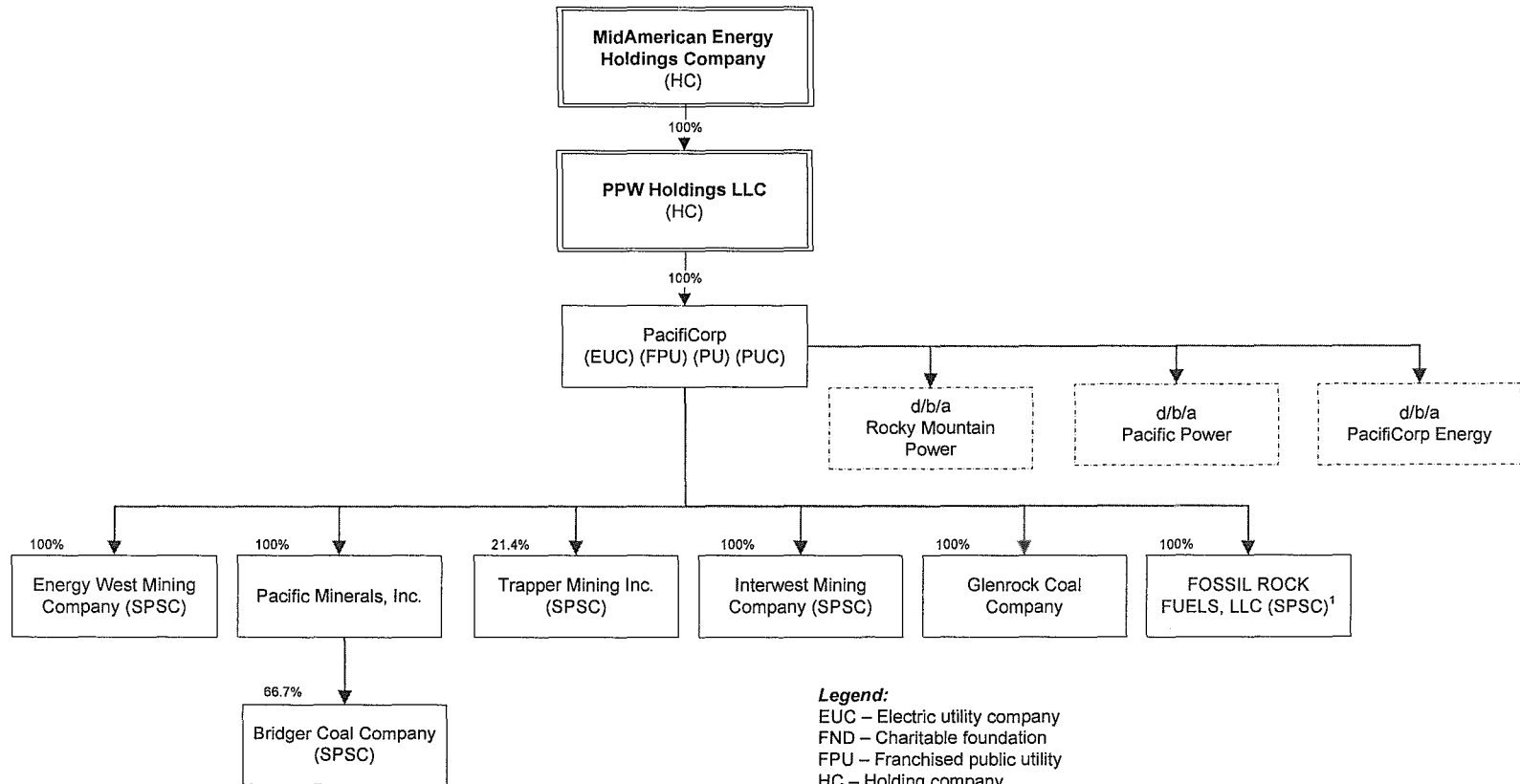
MidAmerican Corporate Structure Following the Proposed Transaction – MidAmerican



MidAmerican Corporate Structure Following the Proposed Transaction – NV Energy, Inc.



MEHC Organization Chart – PacifiCorp



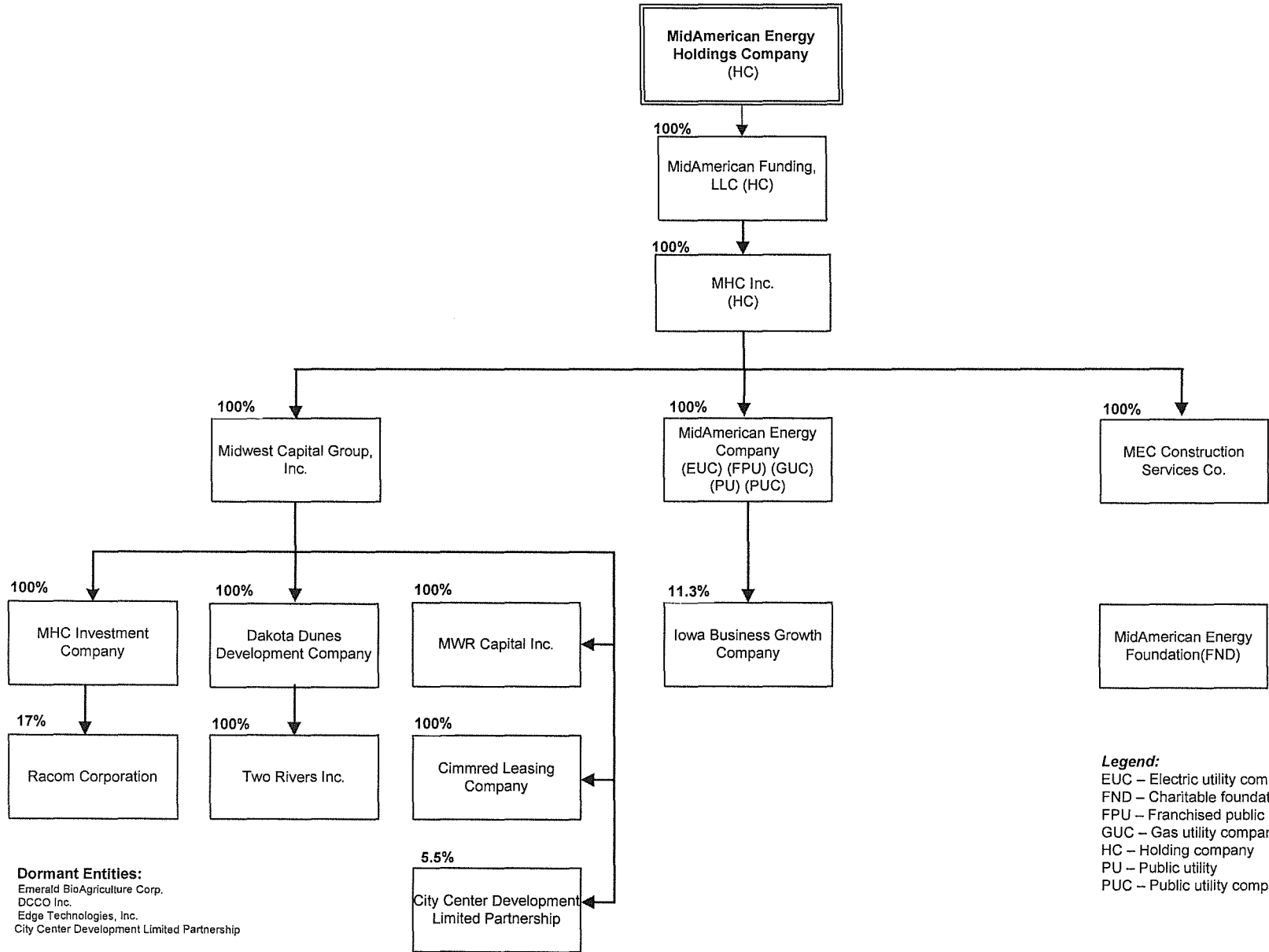
Legend:
 EUC – Electric utility company
 FND – Charitable foundation
 FPU – Franchised public utility
 HC – Holding company
 PU – Public utility
 PUC – Public utility company
 SPSC – Special purpose service company

Dormant List:
 - Centralia Mining Company

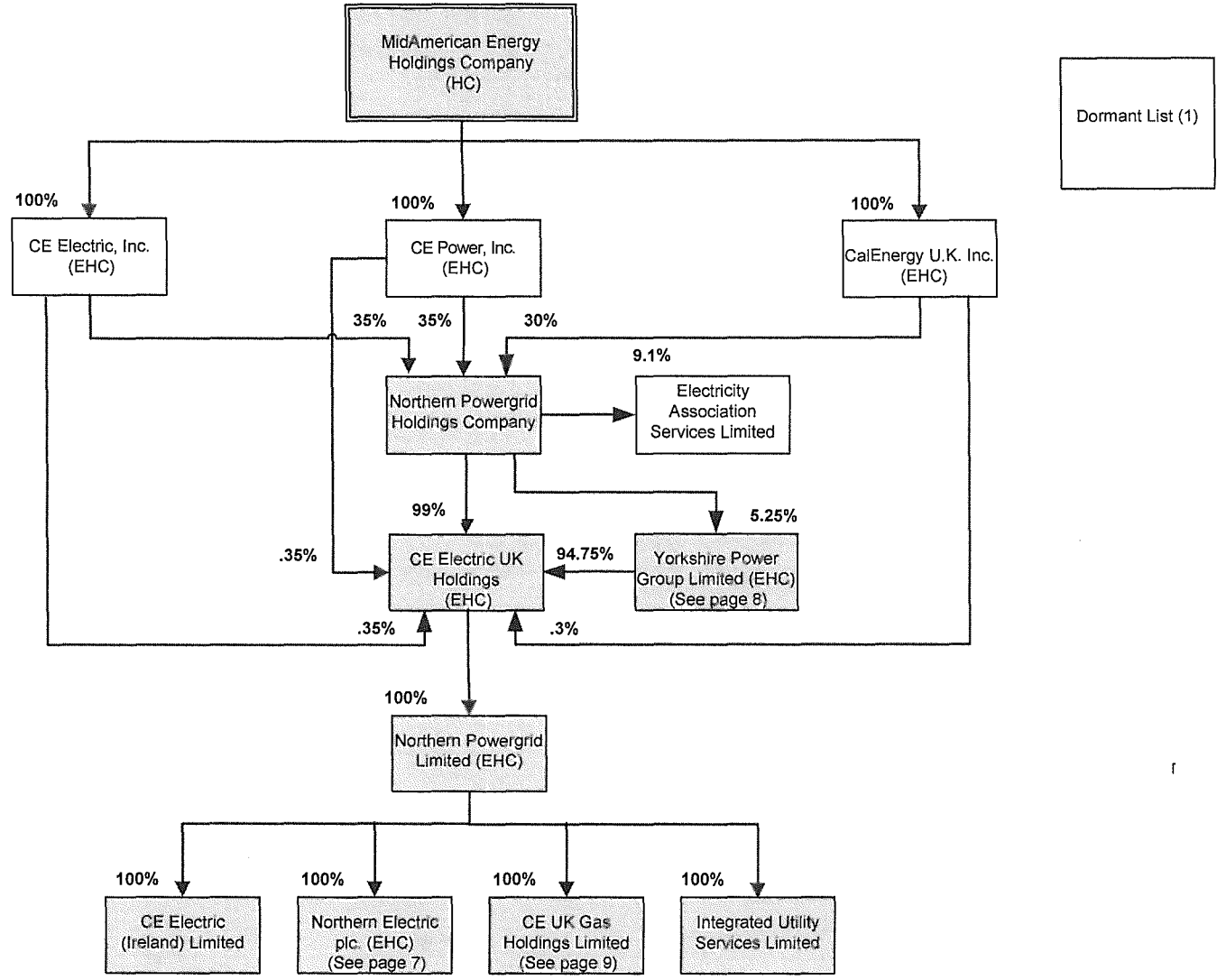
PacifiCorp Foundation (FND)

(1) – Will become a SPSC when it begins to deliver coal.

MEHC Organization Chart – MidAmerican Energy



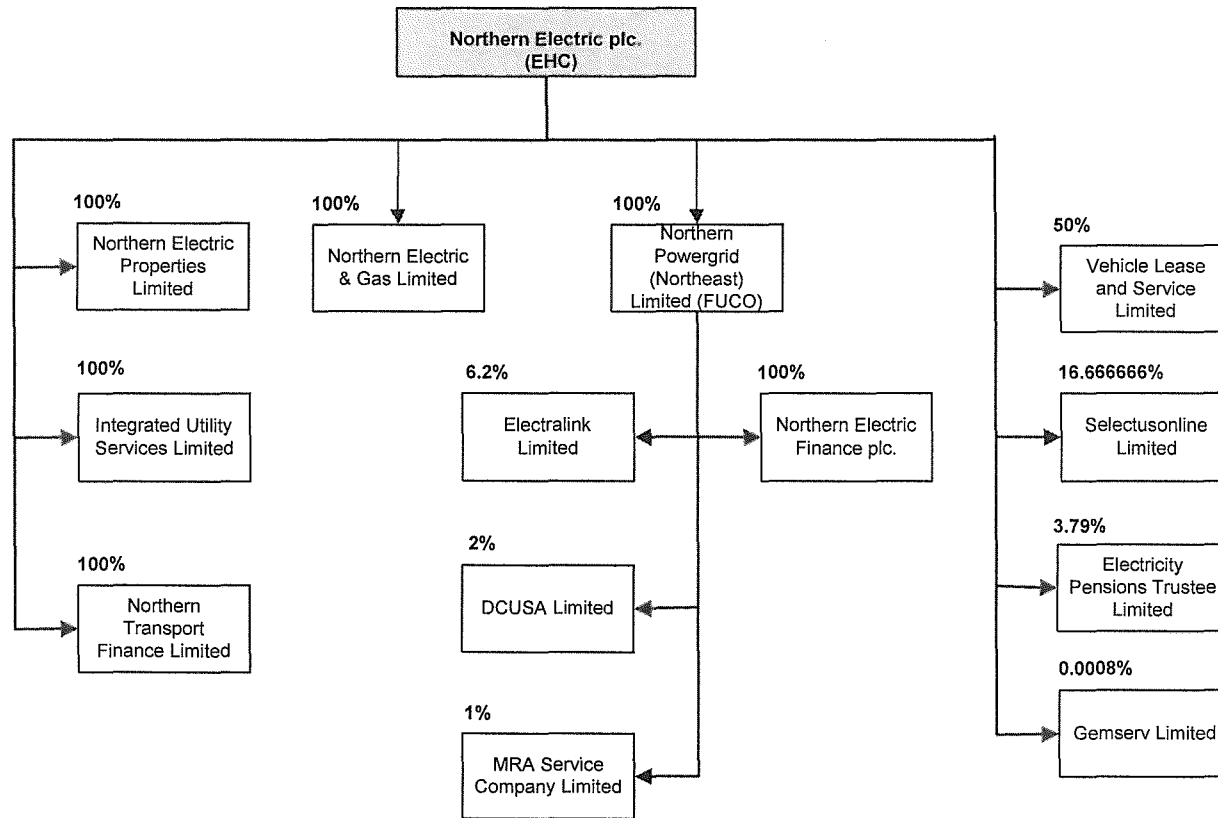
MEHC Organization Chart – Northern Powergrid



Legend:
 EHC – Exempt holding company
 HC – Holding company

(1) The list of dormant companies within the Northern Powergrid platform is available on the MEHC Accounting Portal.

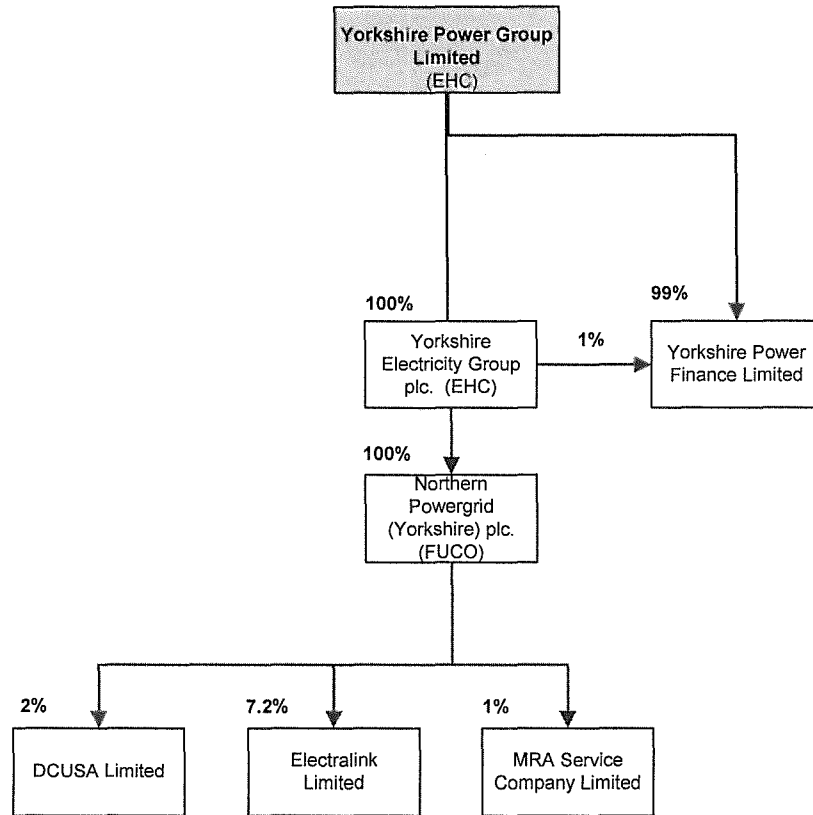
MEHC Organization Chart – Northern Powergrid (Continued)



Legend:

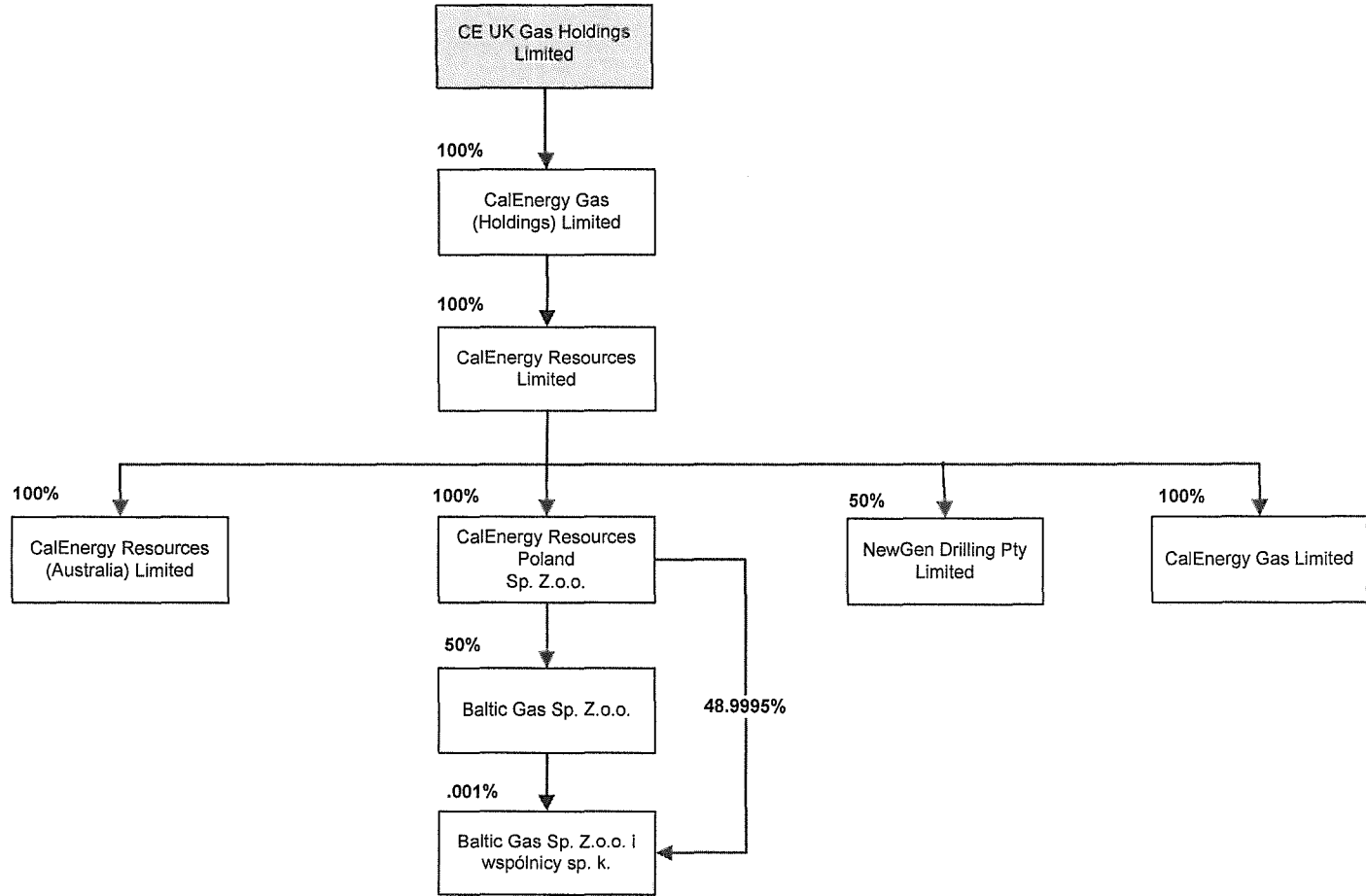
EHC – Exempt holding company
 FUCO – Foreign utility company

MEHC Organization Chart – Northern Powergrid (Continued)

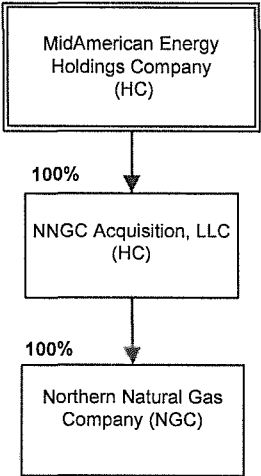


Legend:
EHC – Exempt holding company
FUCO – Foreign utility company

MEHC Organization Chart – Northern Powergrid (Continued)

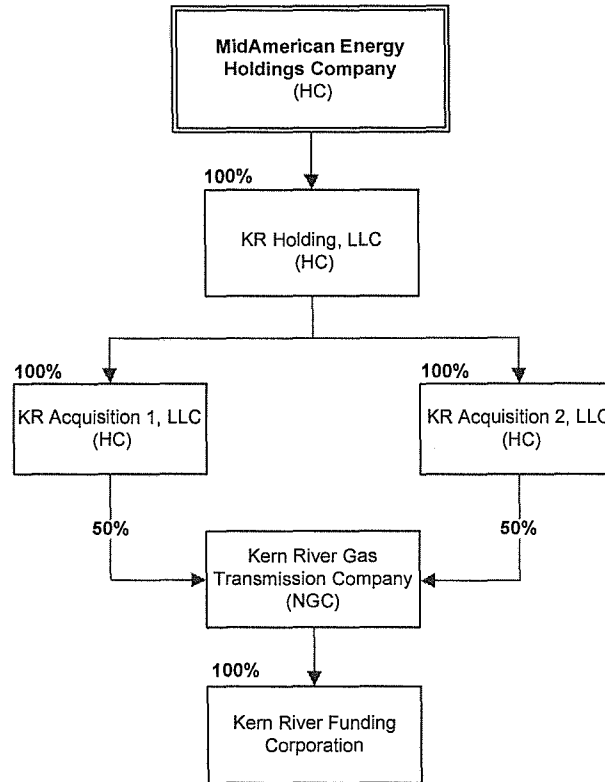


MEHC Organization Chart – Northern Natural Gas



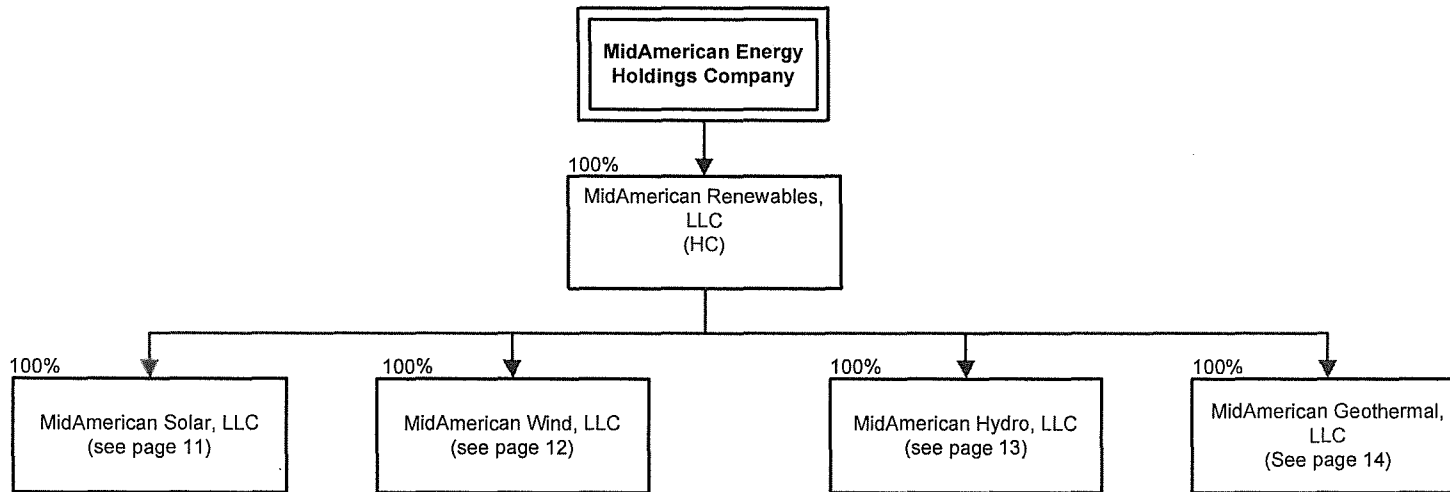
Legend:
HC – Holding company
NGC – Natural gas company

MEHC Organization Chart – Kern River



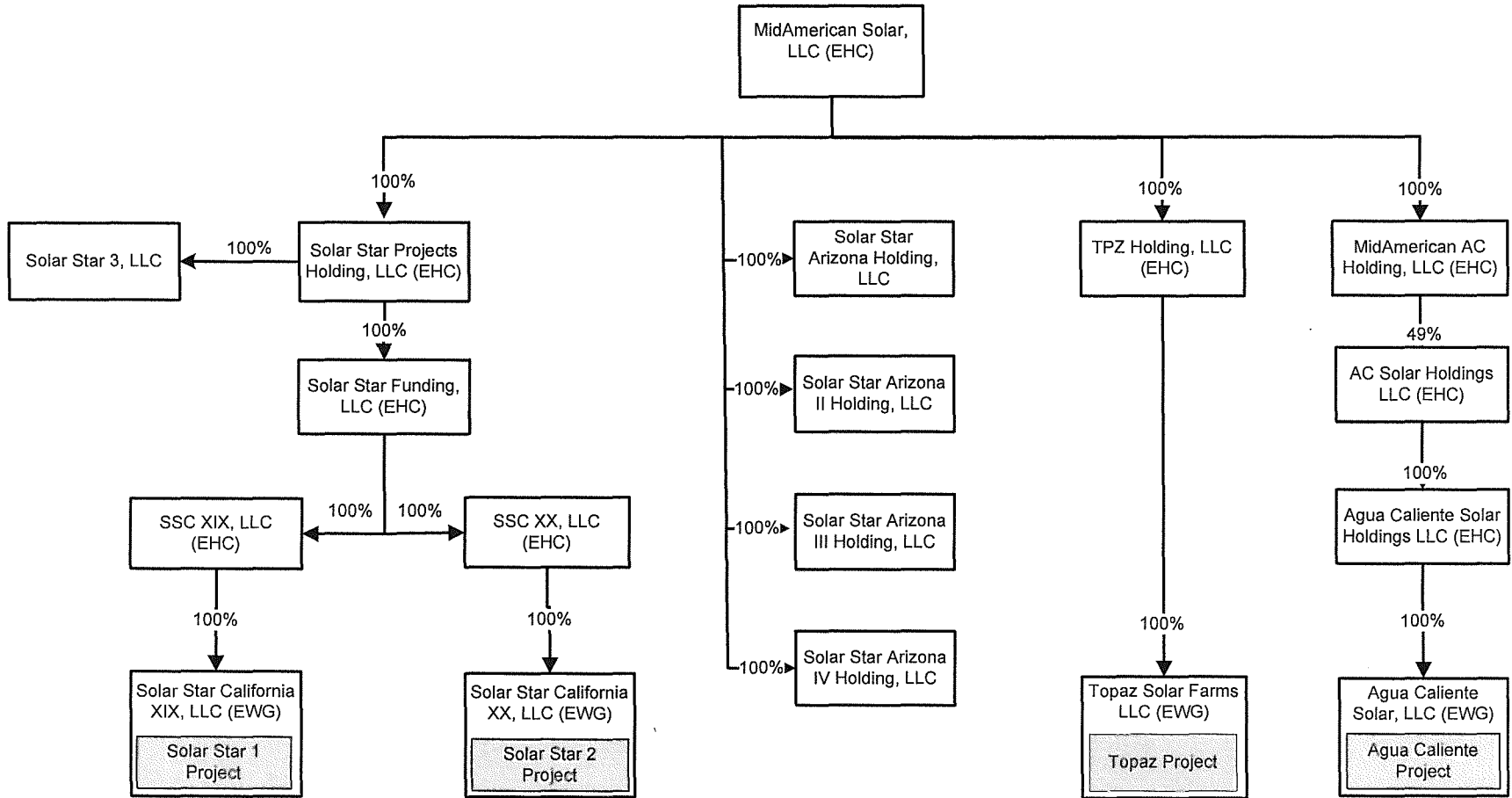
Legend:
HC – Holding company.
NGC – Natural gas company.
SPE – Special purpose entity.

MEHC Organization Chart - MidAmerican Renewables



Legend:
HC – Holding Company

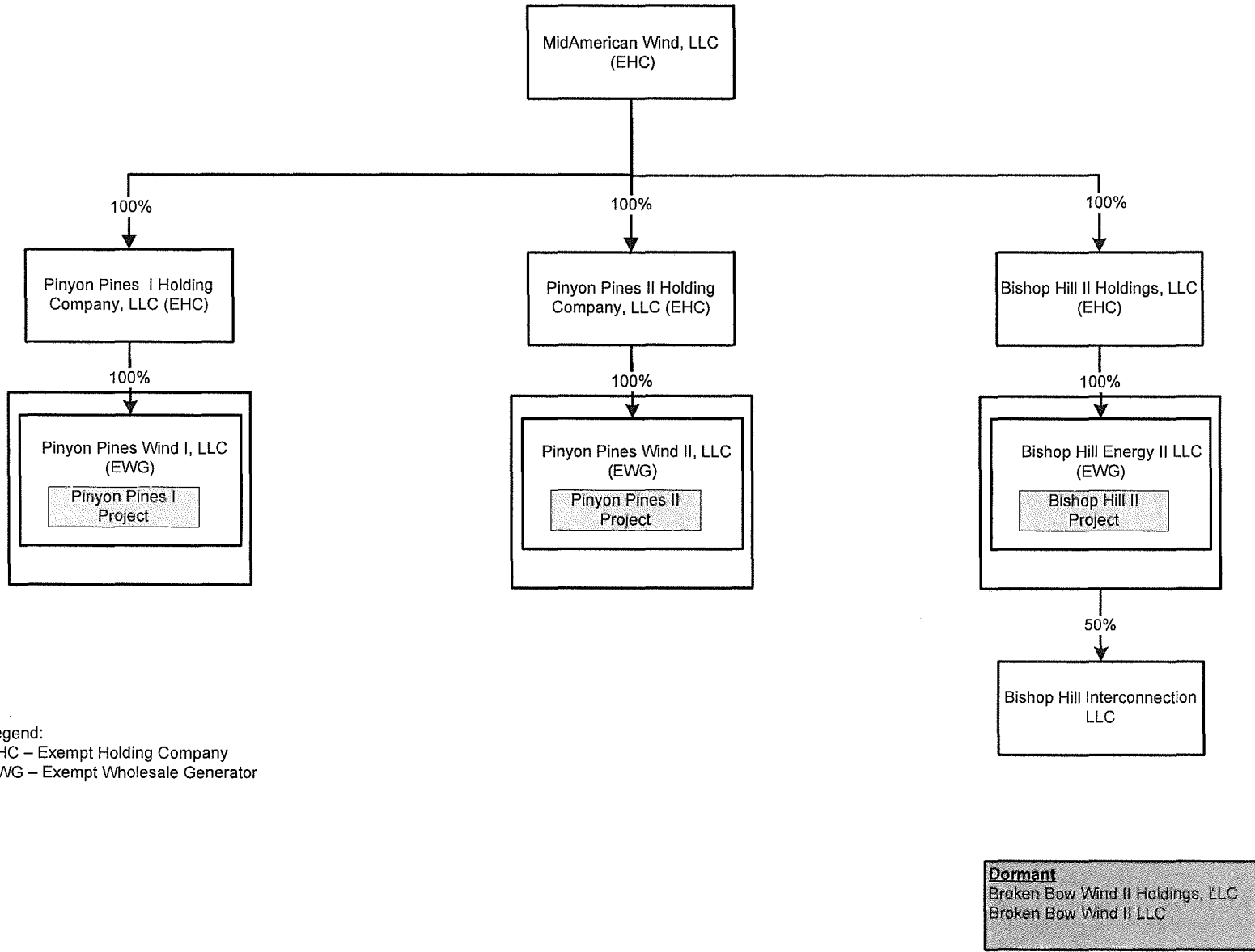
MEHC Organization Chart – MidAmerican Renewables (continued)



Legend:
 EHC – Exempt Holding Company
 EWG – Exempt Wholesale Generator

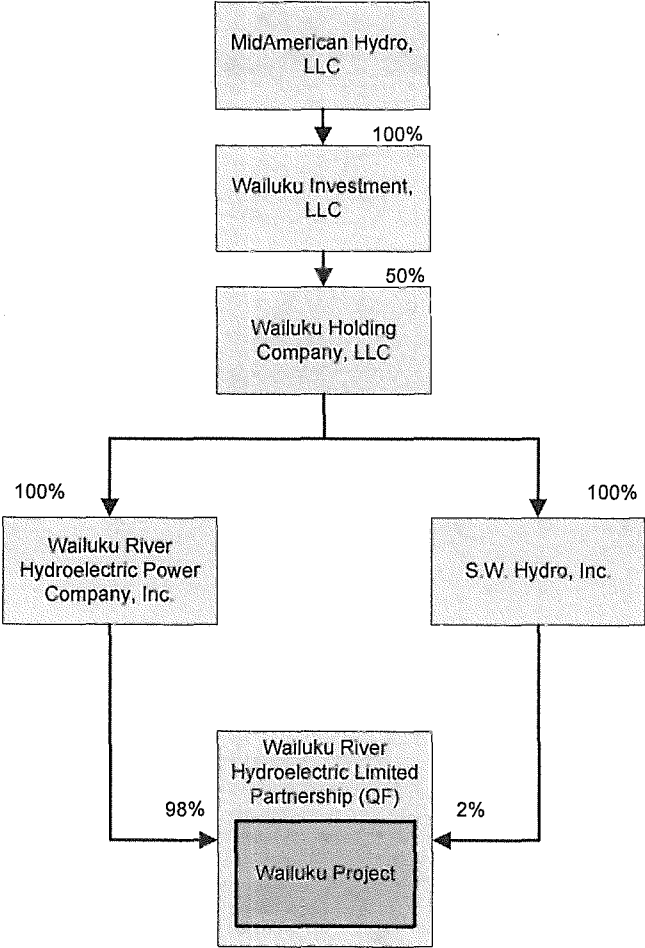
Dormant
 Sundial Holding, LLC
 AVSP 1B, LLC
 AVSP 2B, LLC

MEHC Organization Chart - MidAmerican Renewables (continued)



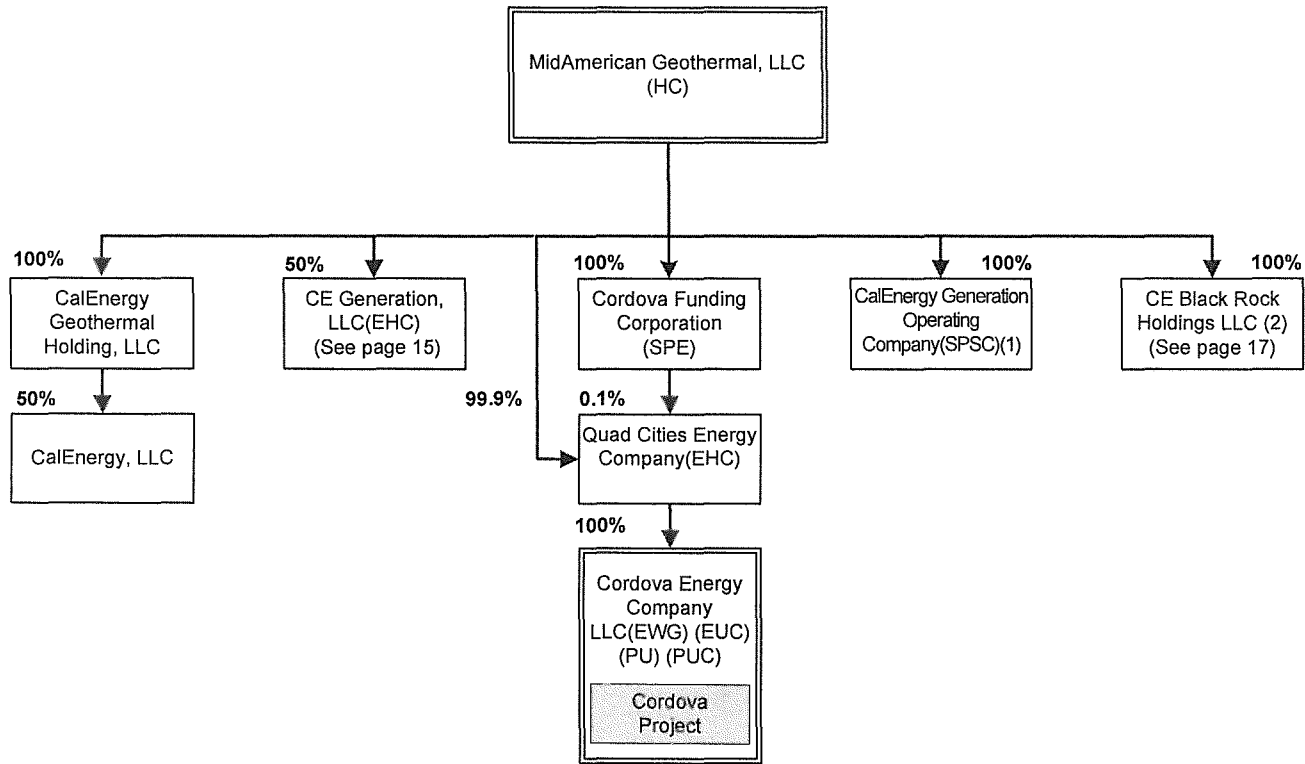
Legend:
 EHC – Exempt Holding Company
 EWG – Exempt Wholesale Generator

MEHC Organization Chart – MidAmerican Renewables (Continued)



Legend:
QF – Qualified facility

MEHC Organization Chart – MidAmerican Renewables (continued)



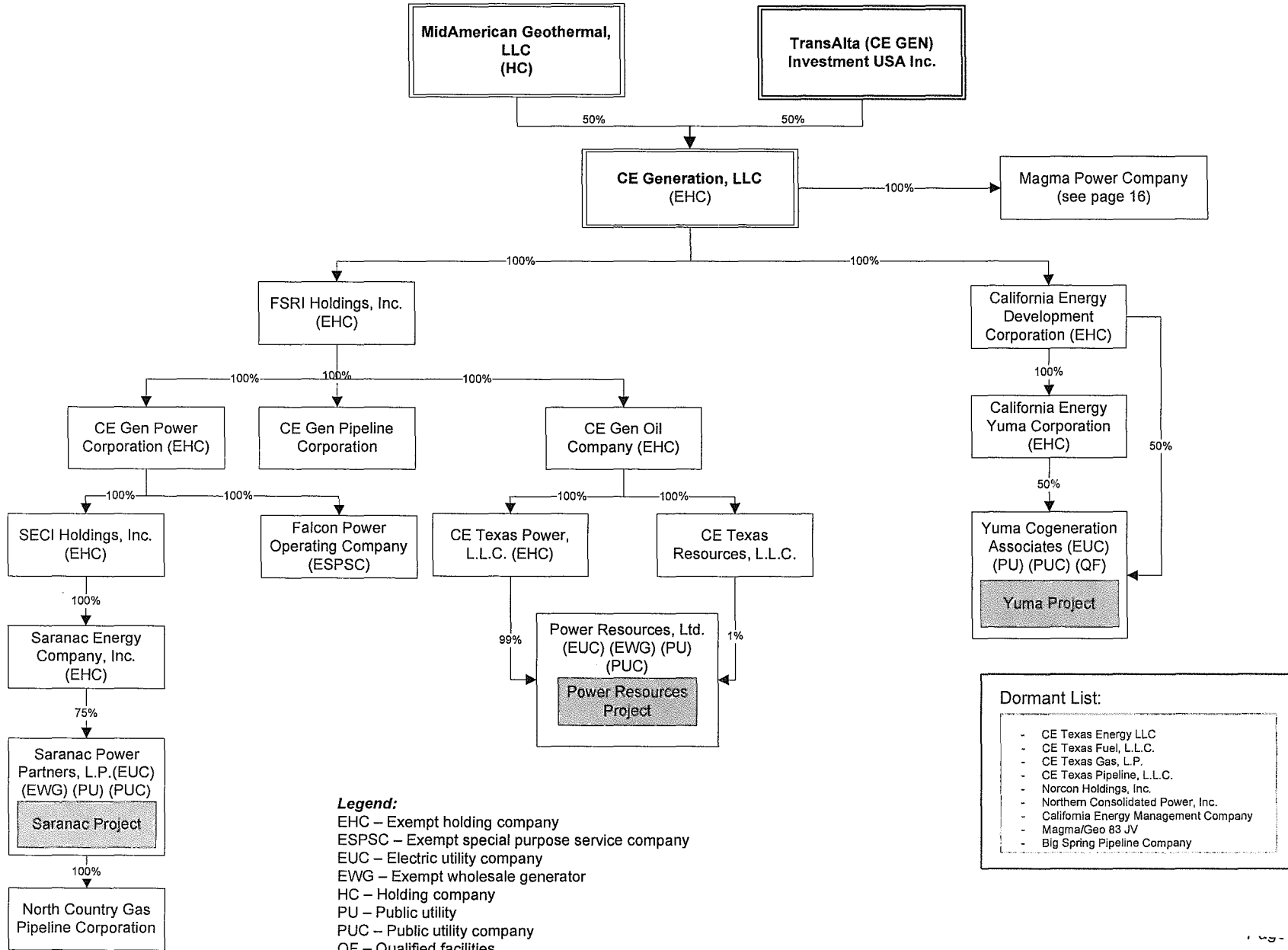
Legend:

- EHC – Exempt holding company
- EUC – Electric utility company
- EWG – Exempt wholesale generator
- HC – Holding company
- PU – Public utility
- PUC – Public utility company
- SPE – Special purpose entity
- SPSC – Special purpose service company

(1) – Provided minimal services to Public Utilities and Natural Gas Companies in 2011.

(2) – Entity will become an exempt holding company (“EHC”) upon commencement of commercial operations of a direct or indirectly owned qualifying facility (“QF”).

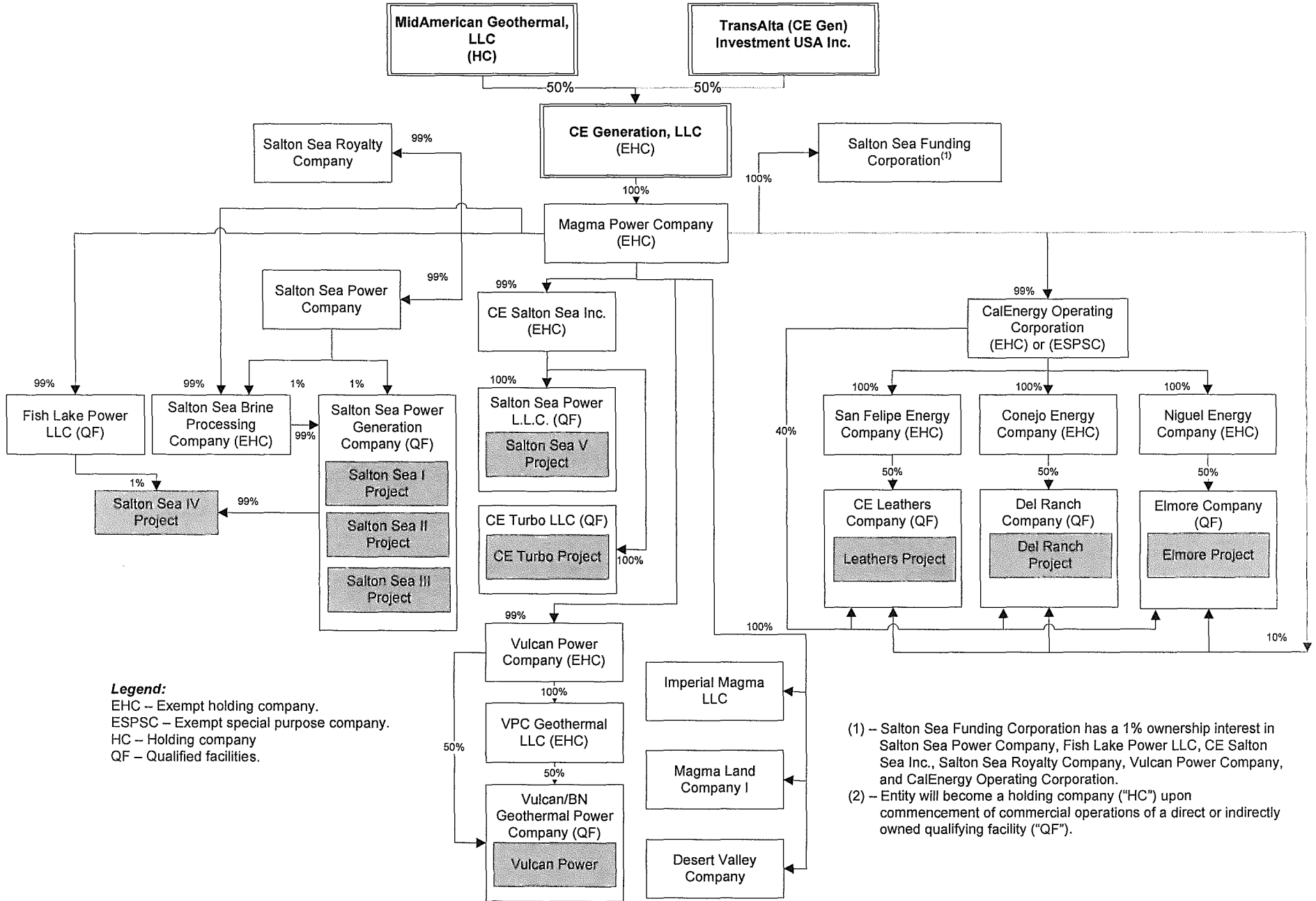
MEHC Organization Chart – MidAmerican Renewables (Continued)



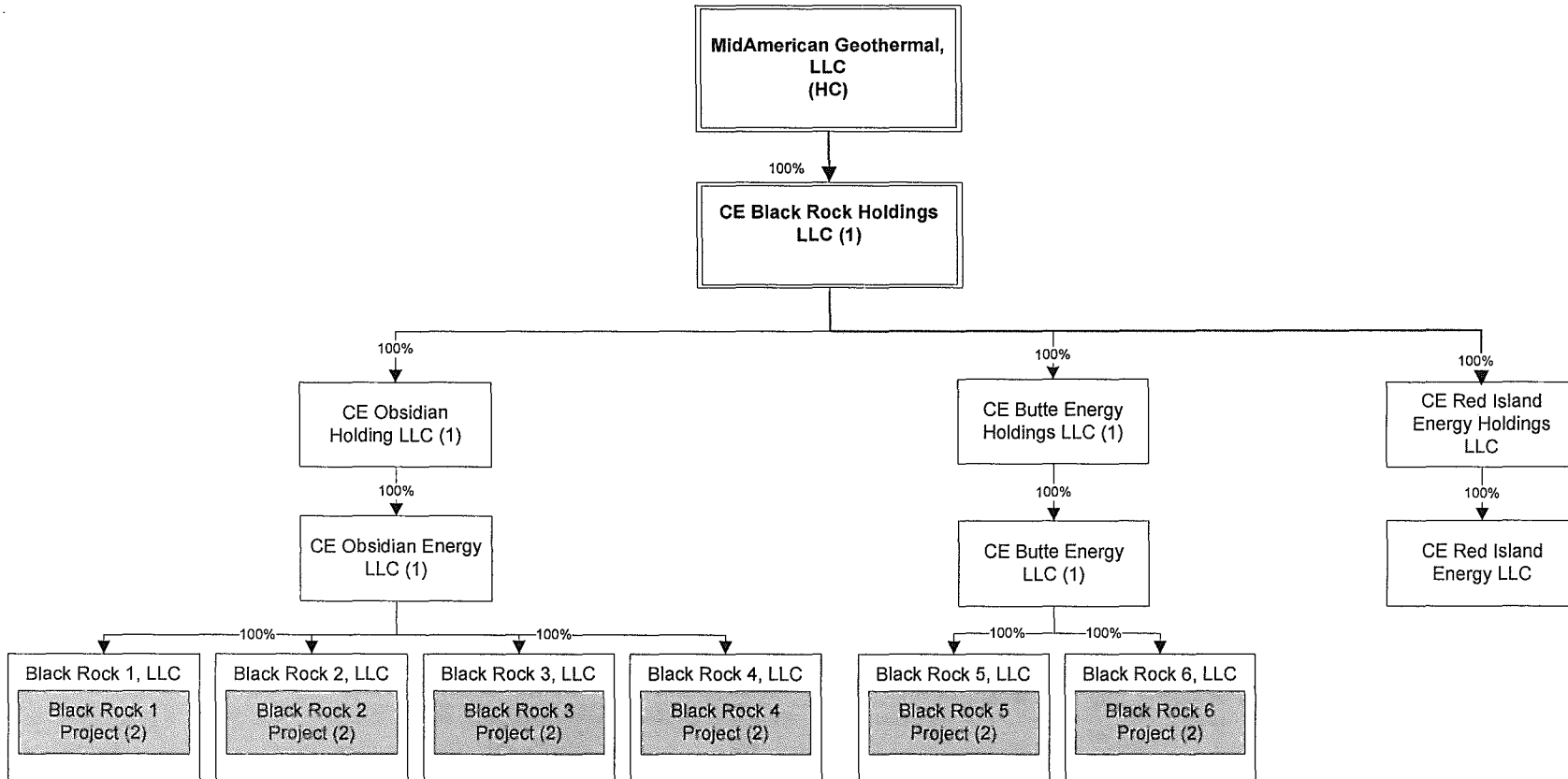
Legend:
 EHC – Exempt holding company
 ESPSC – Exempt special purpose service company
 EUC – Electric utility company
 EWG – Exempt wholesale generator
 HC – Holding company
 PU – Public utility
 PUC – Public utility company
 QF – Qualified facilities

- Dormant List:**
- CE Texas Energy LLC
 - CE Texas Fuel, L.L.C.
 - CE Texas Gas, L.P.
 - CE Texas Pipeline, L.L.C.
 - Norcon Holdings, Inc.
 - Northern Consolidated Power, Inc.
 - California Energy Management Company
 - Magma/Geo 83 JV
 - Big Spring Pipeline Company

MEHC Organization Chart – MidAmerican Renewables (Continued)



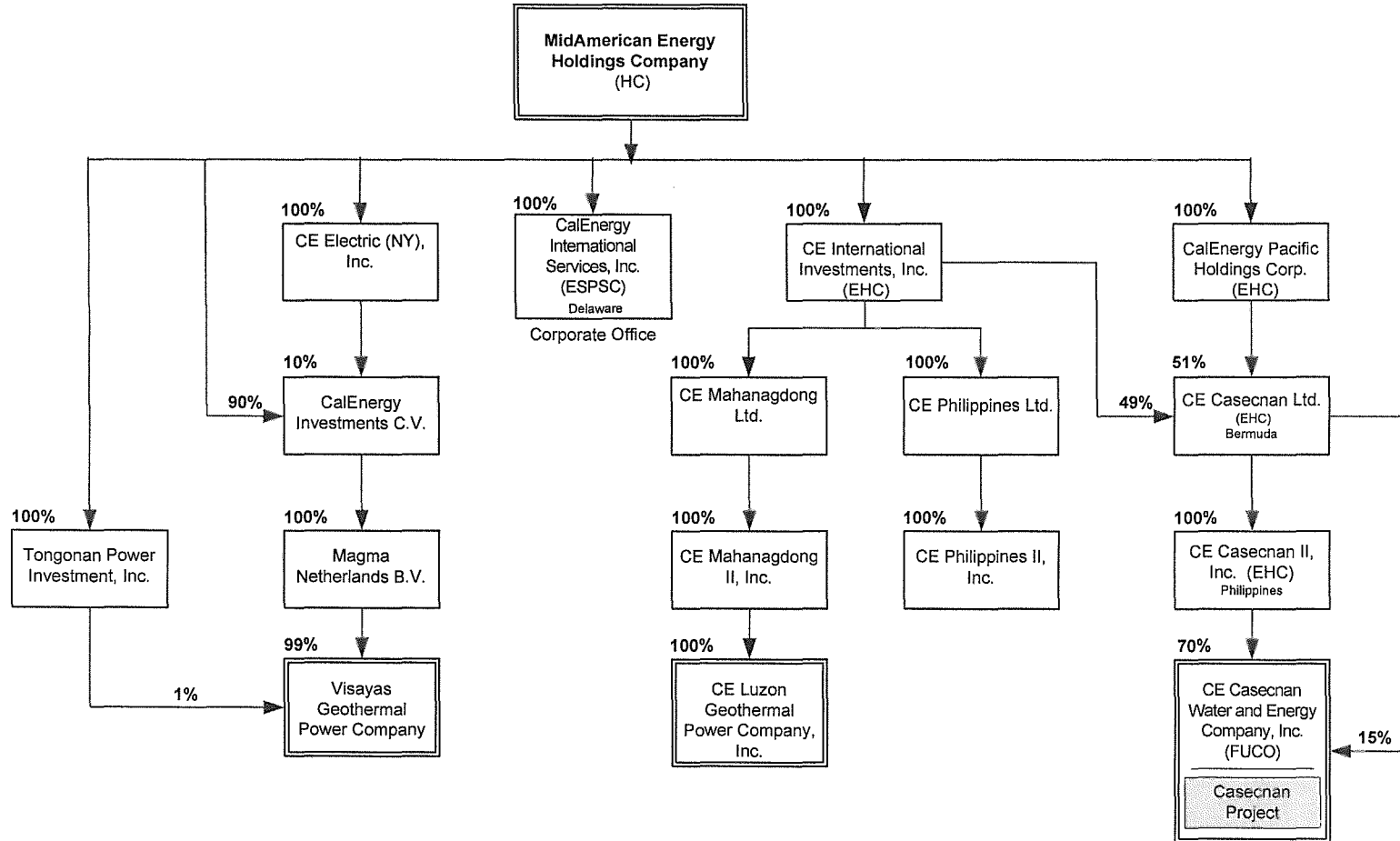
MEHC Organization Chart – MidAmerican Renewables (Continued)



(1) Entity will become an exempt holding company ("EHC") upon commencement of commercial operations of a direct or indirectly owned qualifying facility ("QF").

(2) Entity will become a QF upon commencement of commercial operations.

MEHC Organization Chart – CalEnergy Philippines



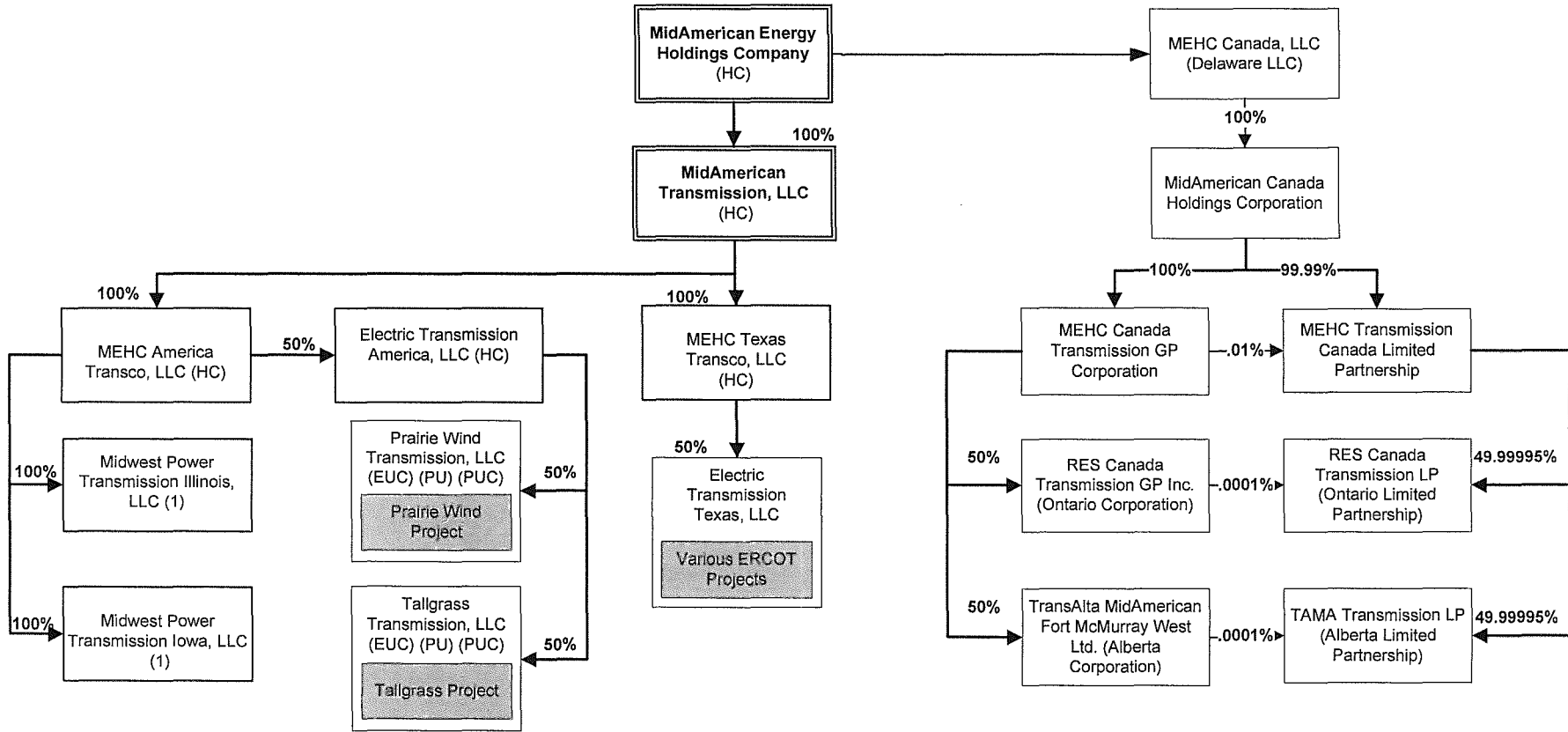
Legend:

EHC – Exempt holding company
 ESPSC – Exempt special purpose service company
 FUCO – Foreign utility company
 HC – Holding company

Dormant List:

- CE International (Bermuda) Limited
- CE Asia Limited
- CalEnergy International Ltd.
- Ormoc Cebu Ltd.
- CE Cebu Geothermal Power Company, Inc.

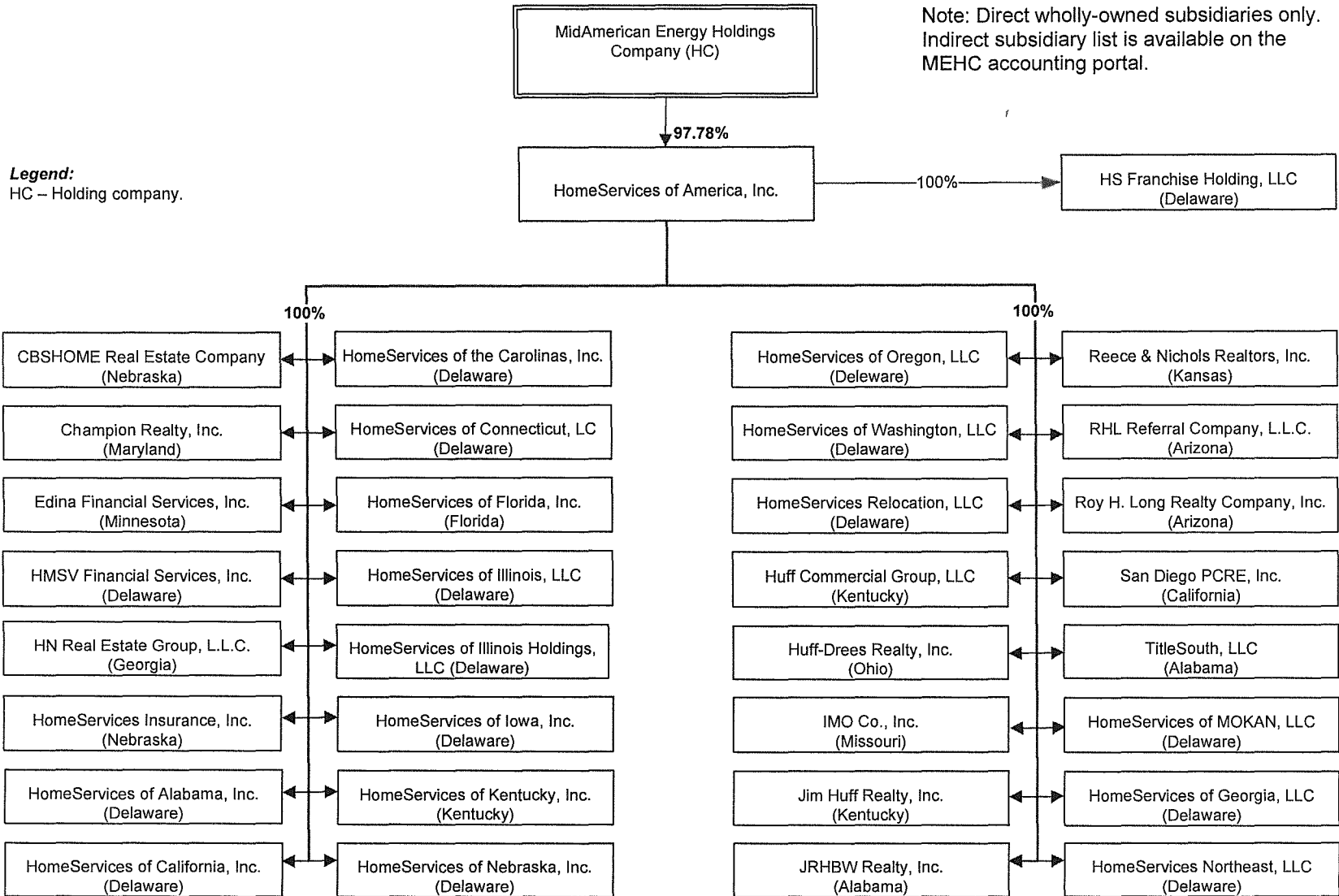
MEHC Organization Chart – MidAmerican Transmission



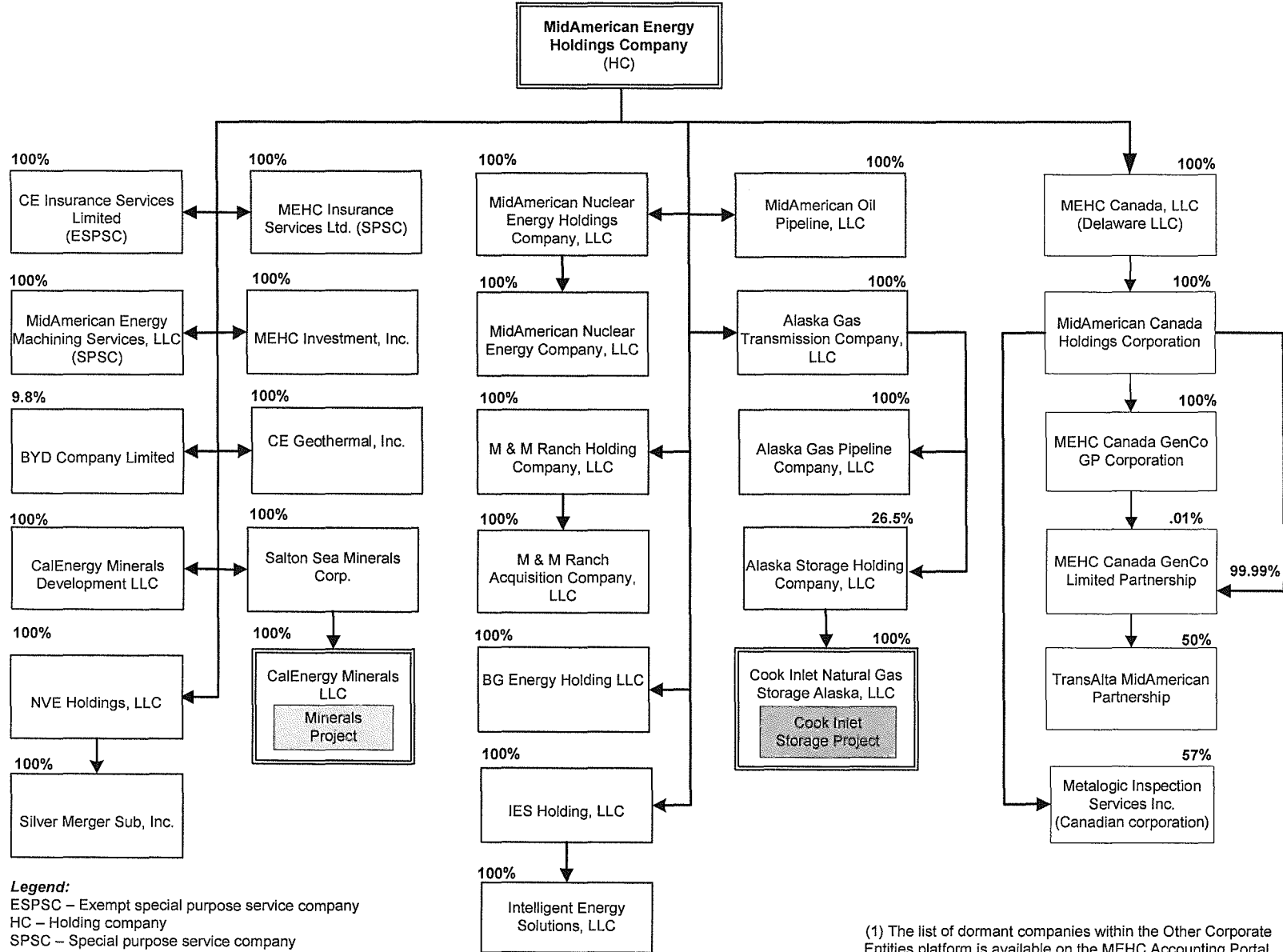
Legend:
 EUC – Electric utility company
 HC – Holding company
 PU – Public utility
 PUC – Public utility company

(1) Entity will become a public utility when a FERC tariff is approved.

MEHC Organization Chart – HomeServices of America, Inc.



MEHC Organization Chart – Other Corporate Entities



(1) The list of dormant companies within the Other Corporate Entities platform is available on the MEHC Accounting Portal.

Northern Powergrid - Dormant Companies

Avonmouth CHP Limited
CE Electric Services Limited
CE Electric U.K. Funding Company Limited
Central PowerGrid Limited
East PowerGrid Limited
Eastern PowerGrid Limited
Integrated Utility Services (UK) Limited
IUS Limited
Midlands PowerGrid Limited
NEDL Limited
North East PowerGrid Limited
North Eastern PowerGrid Limited
North PowerGrid Limited
North West PowerGrid Limited
North Western PowerGrid Limited
Northern Electric Distribution Limited
Northern Electric Share Scheme Trustee Limited
Northern Electricity (North East) Limited
Northern Electricity (Yorkshire) Limited
Northern Electricity Limited
Northern Electricity Networks Company (North East) Limited
Northern Electricity Networks Company (Yorkshire) Limited
Northern Electricity Networks Company Limited
Northern Electric Limited
Northern Energy and Power Limited
Northern Energy Funding Company Limited
Northern Light & Power Limited
Northern Metering Services Limited
Northern Power Networks Company (North East) Limited
Northern Power Networks Company (Yorkshire) Limited
Northern Power Networks Company Limited
Northern PowerGrid (North West) Limited
Northern Utility Services Limited
PowerGrid (Central) Limited
Powergrid (East) Limited
PowerGrid (Eastern) Limited
PowerGrid (Midlands) Limited
PowerGrid (North East) Limited
PowerGrid (North Eastern) Limited
PowerGrid (North West) Limited
PowerGrid (North Western) Limited
Powergrid (North) Limited
PowerGrid (Northern) Limited
PowerGrid (South East) Limited
PowerGrid (South Eastern) Limited
PowerGrid (South West) Limited
PowerGrid (South Western) Limited
PowerGrid (South) Limited
PowerGrid (Southern) Limited
PowerGrid (West) Limited

PowerGrid (Western) Limited
PowerGrid (Yorkshire) Limited
South East PowerGrid Limited
South Eastern PowerGrid Limited
South PowerGrid Limited
South West PowerGrid Limited
South Western PowerGrid Limited
Southern PowerGrid Limited
VLS Limited
West PowerGrid Limited
Western PowerGrid Limited
YEDL Limited
Yorkshire Cayman Holding Limited
Yorkshire Electricity Distribution Limited
Yorkshire PowerGrid Limited

Other Corporate Entities Dormant List

CalEnergy Company, Inc.
CalEnergy Holdings Inc.
CalEnergy International, Inc.
CE Administrative Services, Inc.
CE Resource, LLC
Constellation Energy Holdings, LLC
Gilbert/CBE, L.P.
MEHC Merger Sub Inc.
Metalogic Inspection Services, LLC
Norming Investments B.V.
Northern Aurora, Inc.

Cholla Plant - Coal Received
SAP Account # 120161 Company: 1000
November 2013
Preliminary

| C/N | CURRENT MONTHS COSTS: | APS Tons | | PacifiCorp % | PacifiCorp Tons | Rate | Actual \$ |
|-------|---|--------------------|---|--------------------------------|--------------------|-----------|---------------------|
| | Adjustments | | | | | | |
| 95021 | El Segundo-Coal Price Reopener Accrual - Nov 2013 | | | | | | 301,410.11 |
| 95021 | Coal Price Reopener Accrual Jan-Oct 2013 -T/U (BTL) | | | | | | (662,686.04) |
| | | | | | | | (361,275.93) |
| | APS Coal Costs : | | | | | | |
| 95021 | El Segundo | 318,150.000 | @ | 36.660% | 116,633.790 | 27.171443 | 3,169,108.38 |
| 95016 | Spring Creek | 14,000.000 | @ | 36.660% | 5,132.400 | 12.000000 | 61,588.80 |
| | Total Current Month | 332,150.000 | | | 121,766.190 | | 3,230,697.18 |
| | APS Transportation Costs: | | | | | | |
| 95017 | El Segundo | 318,150.000 | @ | 36.660% | 116,633.790 | 9.904700 | 1,155,222.70 |
| 95017 | Spring Creek | 14,000.000 | @ | 36.660% | 5,132.400 | 29.500000 | 151,405.80 |
| | Total Current Month | 332,150.000 | | | 121,766.190 | | 1,306,628.50 |
| | Total Received Costs including Adjustments | 332,150.000 | | | 121,766.190 | | 4,176,049.75 |
| | | | | | | | |
| | | | | | Tons | | \$ |
| | | | | Coal Consumed - Unit #4 | | | |
| | | | | P&M Regular Coal | 131,544.566 | | 5,299,487.95 |
| | | BELOW THE LINE | | P&M Regular Coal | 0.000 | | (662,686.04) |
| | | | | Total Consumed | 131,544.566 | | 4,636,801.91 |
| | | | | | | | |
| | S:\ACCTNG\FUEL\Kelly\MONTH END\Cholla Plant\2013\[2013_11 Forecast_CHO.xlsx]Summary | | | | | | |
| | 12/12/2013 15:59 | | | | | | |