



RECEIVED

VIA OVERNIGHT MAIL

Jul 31 2001
SERV. 11

July 31, 2001

REVIEWED BY COMMISSIONERS

STEPHEN F. MECHAM _____

CONSTANCE B. WHITE _____

RICHARD M. CAMPBELL _____

Utah Public Service Commission
Heber M. Wells Building, 4th Floor
160 East 300 South
Salt Lake City UT 84114

Attention: Julie P. Orchard
Commission Secretary

RE: Docket No. 98-2035-04 ScottishPower/PacifiCorp Merger Commitments

Please find enclosed PacifiCorp's quarterly report for the period April 2001 through June 2001 detailing the Company's performance in meeting the Customer Guarantees which were agreed upon as a result of the merger between ScottishPower and PacifiCorp. A comparison of performance for this quarter compared to performance for last year is included as well.

As required by merger Stipulation Conditions 33 and 36, detailed outage performance and customer guarantee performance by district are also being reported. These reports are enclosed. Meter set response and temporary services response by district as required by merger Stipulation Condition 34 are also enclosed. Additional reports are provided outlining the number of requests and average days to respond for Customer Guarantees 4, 5 and 6, power restoration performance, field response performance and the number of tree trimming requests.

If you have any questions or require further information, please call Carole Rockney at (503) 813-7408.

Sincerely,

D. Douglas Larson,
Vice President, Regulation

- c: Mark Flandro - Utah Division of Public Utilities
- Rea Petersen - Utah Division of Public Utilities
- Andy MacRitchie - Executive Vice President, Power Delivery

Enclosures

Description	April-June 2001			April-June 2000		
	Events	Failures	Paid	Events	Failures	Paid
CG1 Restoring Supply	383,690	0	\$0	168,969	0	\$0
CG2 Appointments	1,689	3	\$150	1,502	7	\$350
CG3 Switching on Power	8,749	12	\$1,300	7,755	23	\$3,700
CG4 Estimates	2,147	30	\$1,500	1,778	19	\$950
CG5 Respond to Billing Inquiries	1,761	4	\$200	1,233	5	\$250
CG6 Respond to Meter Problems	93	0	\$0	175	1	\$50
CG7 Notification of Planned Interruptions	8,405	11	\$600	1,751	18	\$950
CG8 Power Quality Complaints	309	0	\$0	606	13	\$650
	406,843	60	\$3,750	183,769	86	\$6,900

Summary analysis:

General Comments - A continuing low rate of failures begins the second year of the guarantees. PacifiCorp employees in Utah are working hard to keep failures to a minimum.

- Employees are encouraged to submit suggestions to improve business processes related to the guarantees. Small groups are assigned periodically to study such suggestions, and implement those that have merit. This will continue over the future.

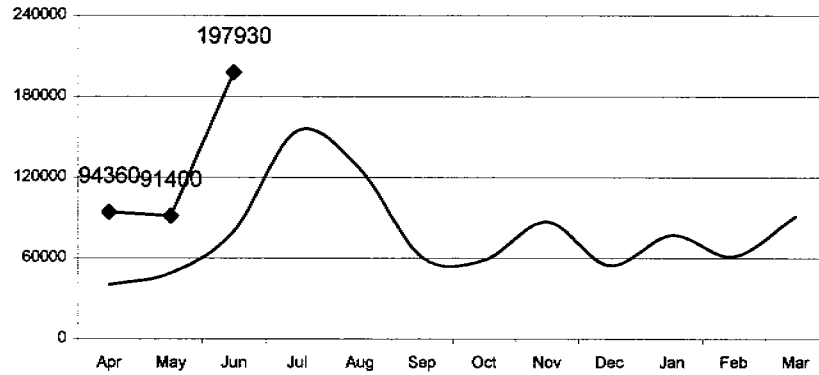
CG1 - Restoring Supply - Events increased significantly during June primarily due to hot weather and wind.

CG3 - Switching on Power - Process improvement efforts since June 2000 have reduced the failure rate compared to last year.

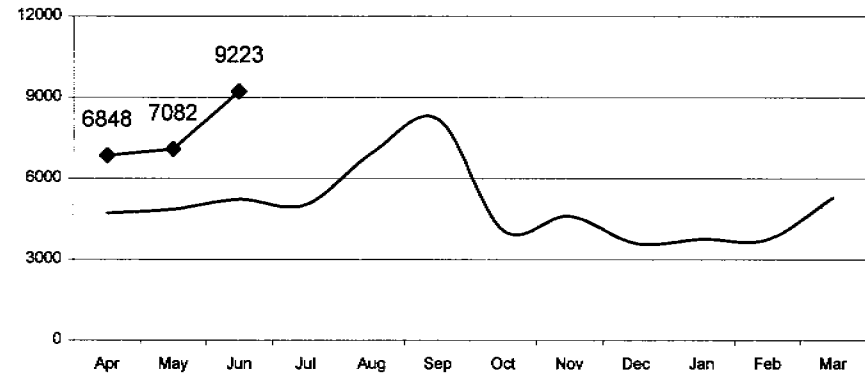
CG4 - Estimates - More failures are reported in recent months after internal audits have helped improve the understanding of guarantee procedures in field offices.

CG8 - Power Quality Complaints - Process improvements have led to a reduced number of failures compared to last year.

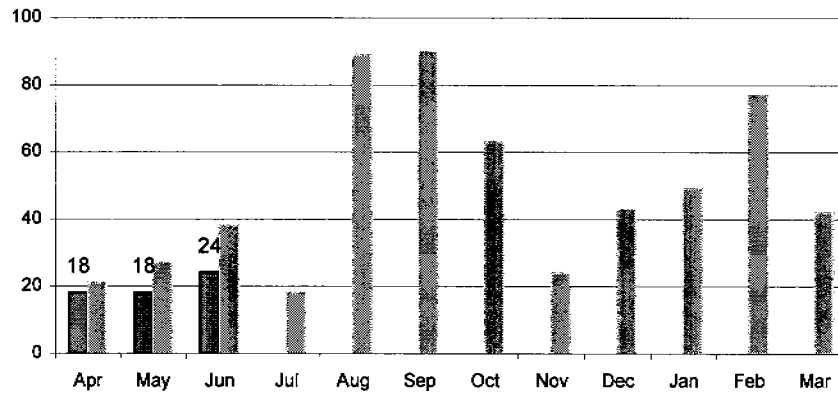
CG 1 Events



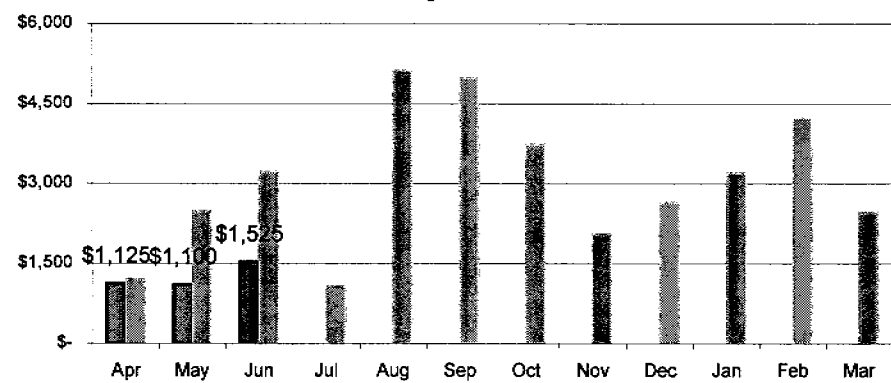
CG 2-8 Events



Failures



Payments



1st Quarter Fiscal Year 2002 04/01/2001 to 06/30/2001

Measure	Operating Area	UCID	Circuit Name	SAIDI (minutes)	SAIFI	MAIFI	MAIFI(e)	CAIDI	Average Customer Count	Customers Off	Number of Occurrences
Customer Requested	Utah			0.001	0.000	0.000	0.000	0.000	628,250	5,495	4
Planned	Utah			1.884	0.013	0.000	0.000	144.923	628,250	8,405	106
Unplanned	Utah			53.840	0.610	0.104	0.103	88.262	628,250	383,051	5,398
								0.000			
Planned	AMERICAN FORK			1.304	0.025	0.000	0.000	52.160	63,521	1,605	9
Unplanned	AMERICAN FORK			30.812	0.459	0.075	0.075	67.129	63,521	29,152	206
Customer Requested	AMERICAN FORK			0.004	0.000	0.000	0.000	0.000	63,521	1	1
High SAIDI	AMERICAN FORK	EUR12	EUREKA #12	6,095.000	43.000	0.000	0.000	141.744	43	43	1
Low SAIDI	AMERICAN FORK	17	***** circuits with Low SAIDI of 0.000 *****	0.000							
High SAIFI	AMERICAN FORK	EUR12	EUREKA #12	6,095.000	43.000	0.000	0.000	141.744	43	43	1
Low SAIFI	AMERICAN FORK	17	***** circuits with Low SAIFI of 0.000 *****	0.000							
High MAIFI	AMERICAN FORK	CHW15	CHERRYWOOD #15	0.419	0.008	1.698	1.698	52.375	2,125	17	4
Low MAIFI	AMERICAN FORK	69	***** circuits with Low MAIFI of 0.000 *****			0.000					
High MAIFI(e)	AMERICAN FORK	CHW15	CHERRYWOOD #15	0.419	0.008	1.698	1.698	52.375	2,125	17	4
Low MAIFI(e)	AMERICAN FORK	63	***** circuits with Low MAIFI(e) of 0.000 *****			0.000					
High Customer Minutes Lost	AMERICAN FORK	SAR13	SARATOGA #13	882.313	5.166	0.124	0.124	170.792	453	2,340	6
Low Customer Minutes Lost	AMERICAN FORK	15	***** circuits with Low Customer Minutes Lost of 0.000 *****								
Planned	ASHLEY (VERNAL)			0.000	0.000	0.000	0.000	0.000	9,382	0	0
Unplanned	ASHLEY (VERNAL)			110.742	0.684	0.105	0.105	161.904	9,382	6,418	50
Customer Requested	ASHLEY (VERNAL)			0.000	0.000	0.000	0.000	0.000	9,382	0	0
High SAIDI	ASHLEY (VERNAL)	VER12	VERNAL #12	428.703	1.164	0.000	0.000	368.302	1,071	1,247	6
Low SAIDI	ASHLEY (VERNAL)	5	***** circuits with Low SAIDI of 0.000 *****	0.000							
High SAIFI	ASHLEY (VERNAL)	VER14	VERNAL #14	154.839	1.641	0.561	0.561	94.356	1,750	2,872	8
Low SAIFI	ASHLEY (VERNAL)	5	***** circuits with Low SAIFI of 0.000 *****			0.000					
High MAIFI	ASHLEY (VERNAL)	VER14	VERNAL #14	154.839	1.641	0.561	0.561	94.356	1,750	2,872	8
Low MAIFI	ASHLEY (VERNAL)	10	***** circuits with Low MAIFI of 0.000 *****			0.000					
High MAIFI(e)	ASHLEY (VERNAL)	VER14	VERNAL #14	154.839	1.641	0.561	0.561	94.356	1,750	2,872	8
Low MAIFI(e)	ASHLEY (VERNAL)	10	***** circuits with Low MAIFI(e) of 0.000 *****			0.000					
High Customer Minutes Lost	ASHLEY (VERNAL)	VER12	VERNAL #12	428.703	1.164	0.000	0.000	368.302	1,071	1,247	6
Low Customer Minutes Lost	ASHLEY (VERNAL)	5	***** circuits with Low Customer Minutes Lost of 0.000 *****								
Planned	CANYONLANDS (MOAB)			0.000	0.000	0.000	0.000	0.000	14,226	0	0
Unplanned	CANYONLANDS (MOAB)			13.633	0.091	0.001	0.001	149.813	14,226	1,300	37
Customer Requested	CANYONLANDS (MOAB)			0.000	0.000	0.000	0.000	0.000	14,226	0	0
High SAIDI	CANYONLANDS (MOAB)	RAT22	RATTLESNAKE #22	156.380	0.519	0.000	0.000	301.310	800	415	9
Low SAIDI	CANYONLANDS (MOAB)	28	***** circuits with Low SAIDI of 0.000 *****	0.000							
High SAIFI	CANYONLANDS (MOAB)	WSW11	WESTWATER #11	78.080	1.110	0.000	0.000	70.342	100	111	2
Low SAIFI	CANYONLANDS (MOAB)	28	***** circuits with Low SAIFI of 0.000 *****			0.000					
High MAIFI	CANYONLANDS (MOAB)	WSW11	WESTWATER #11	78.080	1.110	0.000	0.000	70.342	100	111	2
Low MAIFI	CANYONLANDS (MOAB)	39	***** circuits with Low MAIFI of 0.000 *****			0.000					
High MAIFI(e)	CANYONLANDS (MOAB)	WSW11	WESTWATER #11	78.080	1.110	0.000	0.000	70.342	100	111	2
Low MAIFI(e)	CANYONLANDS (MOAB)	39	***** circuits with Low MAIFI(e) of 0.000 *****			0.000					
High Customer Minutes Lost	CANYONLANDS (MOAB)	RAT22	RATTLESNAKE #22	156.380	0.519	0.000	0.000	301.310	800	415	9
Low Customer Minutes Lost	CANYONLANDS (MOAB)	28	***** circuits with Low Customer Minutes Lost of 0.000 *****								
Planned	CARBON (PRICE)			1.790	0.013	0.000	0.000	137.692	10,248	129	2
Unplanned	CARBON (PRICE)			70.419	0.761	0.009	0.009	92.535	10,248	7,796	62
Customer Requested	CARBON (PRICE)			0.000	0.000	0.000	0.000	0.000	10,248	0	0
High SAIDI	CARBON (PRICE)	FER11	FERRON #11	328.430	1.790	0.000	0.000	183.480	920	1,647	9
Low SAIDI	CARBON (PRICE)	29	***** circuits with Low SAIDI of 0.000 *****	0.000							
High SAIFI	CARBON (PRICE)	MAT12	MATHIS #12	296.604	3.878	0.000	0.000	76.484	498	1,931	6
Low SAIFI	CARBON (PRICE)	29	***** circuits with Low SAIFI of 0.000 *****			0.000					
High MAIFI	CARBON (PRICE)	CCK11	CLEAR CREEK #11	0.000	0.000	1.568	1.568	0.000	37	0	0
Low MAIFI	CARBON (PRICE)	44	***** circuits with Low MAIFI of 0.000 *****			0.000					
High MAIFI(e)	CARBON (PRICE)	CCK11	CLEAR CREEK #11	0.000	0.000	1.568	1.568	0.000	37	0	0
Low MAIFI(e)	CARBON (PRICE)	44	***** circuits with Low MAIFI(e) of 0.000 *****			0.000					
High Customer Minutes Lost	CARBON (PRICE)	FER11	FERRON #11	328.430	1.790	0.000	0.000	183.480	920	1,647	9

1st Quarter Fiscal Year 2002 04/01/2001 to 06/30/2001

Measure	Operating Area	UCID	Circuit Name	SAIDI (minutes)	SAIFI	MAIFI	MAIFI(e)	CAIDI	Average Customer Count	Customers Off	Number of Occurrences
Low Customer Minutes Lost	CARBON (PRICE)	27	***** circuits with Low Customer Minutes Lost of 0.000 *****								
Planned	CEDAR CITY			0.183	0.005	0.000	0.000	32.600	16,630	77	3
Unplanned	CEDAR CITY			25.277	0.330	0.007	0.007	76.597	16,630	5,484	96
Customer Requested	CEDAR CITY			0.006	0.000	0.000	0.000	0.000	16,630	1	1
High SAIDI	CEDAR CITY	MDD24	MIDDLETON #24	802.981	10.406	0.000	0.000	77.165	318	3,309	15
Low SAIDI	CEDAR CITY	57	***** circuits with Low SAIDI of 0.000 *****	0.000							
High SAIFI	CEDAR CITY	MDD24	MIDDLETON #24	802.981	10.406	0.000	0.000	77.165	318	3,309	15
Low SAIFI	CEDAR CITY	57	***** circuits with Low SAIFI of 0.000 *****		0.000						
High MAIFI	CEDAR CITY	CLM15	COLEMAN #15	101.500	1.780	1.560	1.560	57.022	50	89	6
Low MAIFI	CEDAR CITY	81	***** circuits with Low MAIFI of 0.000 *****			0.000					
High MAIFI(e)	CEDAR CITY	CLM15	COLEMAN #15	101.500	1.780	1.560	1.560	57.022	50	89	6
Low MAIFI(e)	CEDAR CITY	81	***** circuits with Low MAIFI(e) of 0.000 *****			0.000					
High Customer Minutes Lost	CEDAR CITY	MDD24	MIDDLETON #24	802.981	10.406	0.000	0.000	77.165	318	3,309	15
Low Customer Minutes Lost	CEDAR CITY	55	***** circuits with Low Customer Minutes Lost of 0.000 *****								
Planned	COTTONWOOD (JORDAN VALLEY)			1.766	0.063	0.000	0.000	28.032	3,913	245	3
Unplanned	COTTONWOOD (JORDAN VALLEY)			294.013	2.308	0.142	0.071	127.389	3,913	9,032	37
Customer Requested	COTTONWOOD (JORDAN VALLEY)			0.000	0.000	0.000	0.000	0.000	3,913	0	0
High SAIDI	COTTONWOOD (JORDAN VALLEY)	DMP13	DIMPLE DELL #13	430.628	3.696	0.000	0.000	116.512	1,232	4,553	8
Low SAIDI	COTTONWOOD (JORDAN VALLEY)	DMP11	DIMPLE DELL #11	151.252	1.206	0.000	0.000	125.416	925	1,116	9
High SAIFI	COTTONWOOD (JORDAN VALLEY)	DMP13	DIMPLE DELL #13	430.628	3.696	0.000	0.000	116.512	1,232	4,553	8
Low SAIFI	COTTONWOOD (JORDAN VALLEY)	DMP11	DIMPLE DELL #11	151.252	1.206	0.000	0.000	125.416	925	1,116	9
High MAIFI	COTTONWOOD (JORDAN VALLEY)	DMP12	DIMPLE DELL #12	273.366	1.915	0.317	0.159	142.750	1,756	3,363	20
Low MAIFI	COTTONWOOD (JORDAN VALLEY)	2	***** circuits with Low MAIFI of 0.000 *****			0.000					
High MAIFI(e)	COTTONWOOD (JORDAN VALLEY)	DMP12	DIMPLE DELL #12	273.366	1.915	0.317	0.159	142.750	1,756	3,363	20
Low MAIFI(e)	COTTONWOOD (JORDAN VALLEY)	2	***** circuits with Low MAIFI(e) of 0.000 *****			0.000					
High Customer Minutes Lost	COTTONWOOD (JORDAN VALLEY)	DMP13	DIMPLE DELL #13	430.628	3.696	0.000	0.000	116.512	1,232	4,553	8
Low Customer Minutes Lost	COTTONWOOD (JORDAN VALLEY)	DMP11	DIMPLE DELL #11	151.252	1.206	0.000	0.000	125.416	925	1,116	9
Planned	DELTA (RICHFIELD)			0.000	0.000	0.000	0.000	0.000	5,766	0	0
Unplanned	DELTA (RICHFIELD)			34.214	0.306	0.990	0.990	111.810	5,766	1,767	42
Customer Requested	DELTA (RICHFIELD)			0.000	0.000	0.000	0.000	0.000	5,766	0	0
High SAIDI	DELTA (RICHFIELD)	STH21	SUTHERLAND #21	225.450	2.305	1.039	1.039	97.809	462	1,065	22
Low SAIDI	DELTA (RICHFIELD)	19	***** circuits with Low SAIDI of 0.000 *****	0.000							
High SAIFI	DELTA (RICHFIELD)	STH21	SUTHERLAND #21	225.450	2.305	1.039	1.039	97.809	462	1,065	22
Low SAIFI	DELTA (RICHFIELD)	19	***** circuits with Low SAIFI of 0.000 *****		0.000						
High MAIFI	DELTA (RICHFIELD)	STH21	SUTHERLAND #21	225.450	2.305	1.039	1.039	97.809	462	1,065	22
Low MAIFI	DELTA (RICHFIELD)	4	***** circuits with Low MAIFI of 0.000 *****			0.000					
High MAIFI(e)	DELTA (RICHFIELD)	STH21	SUTHERLAND #21	225.450	2.305	1.039	1.039	97.809	462	1,065	22
Low MAIFI(e)	DELTA (RICHFIELD)	4	***** circuits with Low MAIFI(e) of 0.000 *****			0.000					
High Customer Minutes Lost	DELTA (RICHFIELD)	STH21	SUTHERLAND #21	225.450	2.305	1.039	1.039	97.809	462	1,065	22
Low Customer Minutes Lost	DELTA (RICHFIELD)	2	***** circuits with Low Customer Minutes Lost of 0.000 *****								
Planned	LAYTON			0.174	0.002	0.000	0.000	87.000	37,001	70	6
Unplanned	LAYTON			65.254	1.009	0.012	0.012	64.672	37,001	37,319	148
Customer Requested	LAYTON			0.000	0.000	0.000	0.000	0.000	37,001	0	0
High SAIDI	LAYTON	SYR15	SYRACUSE #15	49,394.000	1,371.000	0.000	0.000	36.028	1	1,371	4
Low SAIDI	LAYTON	12	***** circuits with Low SAIDI of 0.000 *****	0.000							
High SAIFI	LAYTON	SYR15	SYRACUSE #15	49,394.000	1,371.000	0.000	0.000	36.028	1	1,371	4
Low SAIFI	LAYTON	12	***** circuits with Low SAIFI of 0.000 *****		0.000						
High MAIFI	LAYTON	ANG14	ANGEL #14	62.155	1.575	0.167	0.167	39.463	2,050	3,228	4
Low MAIFI	LAYTON	34	***** circuits with Low MAIFI of 0.000 *****			0.000					
High MAIFI(e)	LAYTON	ANG14	ANGEL #14	62.155	1.575	0.167	0.167	39.463	2,050	3,228	4
Low MAIFI(e)	LAYTON	34	***** circuits with Low MAIFI(e) of 0.000 *****			0.000					
High Customer Minutes Lost	LAYTON	SYR11	SYRACUSE #11	7,654.121	111.168	0.000	0.000	68.852	107	11,895	8
Low Customer Minutes Lost	LAYTON	12	***** circuits with Low Customer Minutes Lost of 0.000 *****								
Planned	SLC METRO			2.478	0.015	0.000	0.000	165.200	184,202	2,814	30
Unplanned	SLC METRO			32.412	0.359	0.136	0.136	90.284	184,202	66,186	633

1st Quarter Fiscal Year 2002 04/01/2001 to 06/30/2001

Measure	Operating Area	UCID	Circuit Name	SAIDI (minutes)	SAIFI	MAIFI	MAIFI(e)	CAIDI	Average Customer Count	Customers Off	Number of Occurrences
Customer Requested	SLC METRO			0.000	0.000	0.000	0.000	0.000	184,202	0	0
High SAIDI	SLC METRO	UNI01	UNIVERSITY #1	8,327.000	111.000	0.000	0.000	75.018	1	111	1
Low SAIDI	SLC METRO	115	***** circuits with Low SAIDI of 0.000 *****	0.000							
High SAIFI	SLC METRO	UNI01	UNIVERSITY #1	8,327.000	111.000	0.000	0.000	75.018	1	111	1
Low SAIFI	SLC METRO	115	***** circuits with Low SAIFI of 0.000 *****		0.000						
High MAIFI	SLC METRO	VLY13	VALLEY CENTER #13	5.834	0.031	3.461	3.461	188.194	453	14	1
Low MAIFI	SLC METRO	220	***** circuits with Low MAIFI of 0.000 *****			0.000					
High MAIFI(e)	SLC METRO	VLY13	VALLEY CENTER #13	5.834	0.031	3.461	3.461	188.194	453	14	1
Low MAIFI(e)	SLC METRO	220	***** circuits with Low MAIFI(e) of 0.000 *****				0.000				
High Customer Minutes Lost	SLC METRO	LPK12	LAKEPARK #12	263.723	0.971	0.000	0.000	271.599	3,065	2,975	3
Low Customer Minutes Lost	SLC METRO	114	***** circuits with Low Customer Minutes Lost of 0.000 *****								
Planned	MILFORD (CEDAR CITY)			0.000	0.000	0.000	0.000	0.000	1,679	0	0
Unplanned	MILFORD (CEDAR CITY)			189.046	1.591	0.007	0.007	118.822	1,679	2,672	31
Customer Requested	MILFORD (CEDAR CITY)			0.000	0.000	0.000	0.000	0.000	1,679	0	0
High SAIDI	MILFORD (CEDAR CITY)	BKL11	BROOKLAWN #11	1,372.256	9.529	0.000	0.000	144.008	121	1,153	9
Low SAIDI	MILFORD (CEDAR CITY)	8	***** circuits with Low SAIDI of 0.000 *****	0.000							
High SAIFI	MILFORD (CEDAR CITY)	BKL11	BROOKLAWN #11	1,372.256	9.529	0.000	0.000	144.008	121	1,153	9
Low SAIFI	MILFORD (CEDAR CITY)	8	***** circuits with Low SAIFI of 0.000 *****		0.000						
High MAIFI	MILFORD (CEDAR CITY)	SML12	SOUTH MILFORD #12	5.573	0.031	0.115	0.115	179.774	96	3	3
Low MAIFI	MILFORD (CEDAR CITY)	18	***** circuits with Low MAIFI of 0.000 *****			0.000					
High MAIFI(e)	MILFORD (CEDAR CITY)	SML12	SOUTH MILFORD #12	5.573	0.031	0.115	0.115	179.774	96	3	3
Low MAIFI(e)	MILFORD (CEDAR CITY)	18	***** circuits with Low MAIFI(e) of 0.000 *****				0.000				
High Customer Minutes Lost	MILFORD (CEDAR CITY)	BKL11	BROOKLAWN #11	1,372.256	9.529	0.000	0.000	144.008	121	1,153	9
Low Customer Minutes Lost	MILFORD (CEDAR CITY)	8	***** circuits with Low Customer Minutes Lost of 0.000 *****								
Planned	OGDEN			6.499	0.029	0.002	0.002	224.103	70,416	2,007	22
Unplanned	OGDEN			74.330	0.712	0.050	0.050	104.396	70,416	50,103	309
Customer Requested	OGDEN			0.006	0.000	0.000	0.000	0.000	70,416	9	2
High SAIDI	OGDEN	WOG12	WEST OGDEN #12	1,250.750	19.394	0.000	0.000	64.492	188	3,646	10
Low SAIDI	OGDEN	49	***** circuits with Low SAIDI of 0.000 *****	0.000							
High SAIFI	OGDEN	WOG12	WEST OGDEN #12	1,250.750	19.394	0.000	0.000	64.492	188	3,646	10
Low SAIFI	OGDEN	49	***** circuits with Low SAIFI of 0.000 *****		0.000						
High MAIFI	OGDEN	NOG12	NORTH OGDEN #12	15.648	0.132	1.070	1.070	118.545	2,000	264	8
Low MAIFI	OGDEN	99	***** circuits with Low MAIFI of 0.000 *****			0.000					
High MAIFI(e)	OGDEN	NOG12	NORTH OGDEN #12	15.648	0.132	1.070	1.070	118.545	2,000	264	8
Low MAIFI(e)	OGDEN	99	***** circuits with Low MAIFI(e) of 0.000 *****				0.000				
High Customer Minutes Lost	OGDEN	BRK11	BRICKYARD #11	514.345	1.943	0.000	0.000	264.717	1,306	2,537	6
Low Customer Minutes Lost	OGDEN	49	***** circuits with Low Customer Minutes Lost of 0.000 *****								
Planned	PARK CITY			2.077	0.011	0.000	0.000	188.818	16,060	177	2
Unplanned	PARK CITY			81.703	0.659	0.003	0.003	123.980	16,060	10,579	119
Customer Requested	PARK CITY			0.000	0.000	0.000	0.000	0.000	16,060	0	0
High SAIDI	PARK CITY	DSR11	DESERET #11	411.000	1.000	0.000	0.000	411.000	1	1	1
Low SAIDI	PARK CITY	12	***** circuits with Low SAIDI of 0.000 *****	0.000							
High SAIFI	PARK CITY	JUD12	JUDGE #12	251.583	4.750	3.167	3.167	52.965	12	57	3
Low SAIFI	PARK CITY	12	***** circuits with Low SAIFI of 0.000 *****		0.000						
High MAIFI	PARK CITY	JUD12	JUDGE #12	251.583	4.750	3.167	3.167	52.965	12	57	3
Low MAIFI	PARK CITY	33	***** circuits with Low MAIFI of 0.000 *****			0.000					
High MAIFI(e)	PARK CITY	JUD12	JUDGE #12	251.583	4.750	3.167	3.167	52.965	12	57	3
Low MAIFI(e)	PARK CITY	33	***** circuits with Low MAIFI(e) of 0.000 *****				0.000				
High Customer Minutes Lost	PARK CITY	OKY11	OAKLEY #11	405.549	1.923	0.000	0.000	210.894	1,936	3,722	28
Low Customer Minutes Lost	PARK CITY	12	***** circuits with Low Customer Minutes Lost of 0.000 *****								
Planned	SALINA (RICHFIELD)			0.268	0.002	0.000	0.000	134.000	13,236	24	1
Unplanned	SALINA (RICHFIELD)			44.883	0.324	0.014	0.014	138.528	13,236	4,295	76
Customer Requested	SALINA (RICHFIELD)			0.000	0.000	0.000	0.000	0.000	13,236	0	0
High SAIDI	SALINA (RICHFIELD)	CTL11	CENTRAL #11	572.556	5.172	0.000	0.000	110.703	99	512	5
Low SAIDI	SALINA (RICHFIELD)	43	***** circuits with Low SAIDI of 0.000 *****	0.000							

1st Quarter Fiscal Year 2002 04/01/2001 to 06/30/2001

Measure	Operating Area	UCID	Circuit Name	SAIDI (minutes)	SAIFI	MAIFI	MAIFI(e)	CAIDI	Average Customer Count	Customers Off	Number of Occurrences
High SAIFI	SALINA (RICHFIELD)	CTL11	CENTRAL #11	572.556	5.172	0.000	0.000	110.703	99	512	5
Low SAIFI	SALINA (RICHFIELD)	43	***** circuits with Low SAIFI of 0.000 *****		0.000						
High MAIFI	SALINA (RICHFIELD)	SCI11	SCPIO #11	269.797	2.087	1.000	1.000	129.275	172	359	3
Low MAIFI	SALINA (RICHFIELD)	66	***** circuits with Low MAIFI of 0.000 *****		0.000						
High MAIFI(e)	SALINA (RICHFIELD)	SCI11	SCPIO #11	269.797	2.087	1.000	1.000	129.275	172	359	3
Low MAIFI(e)	SALINA (RICHFIELD)	66	***** circuits with Low MAIFI(e) of 0.000 *****		0.000						
High Customer Minutes Lost	SALINA (RICHFIELD)	GUN12	GUNNISON #12	524.454	1.233	0.000	0.000	425.348	339	418	5
Low Customer Minutes Lost	SALINA (RICHFIELD)	43	***** circuits with Low Customer Minutes Lost of 0.000 *****								
Planned	SMITHFIELD			0.013	0.000	0.000	0.000	0.000	13,148	4	1
Unplanned	SMITHFIELD			131.240	1.713	0.068	0.068	76.614	13,148	22,526	139
Customer Requested	SMITHFIELD			0.000	0.000	0.000	0.000	0.000	13,148	0	0
High SAIDI	SMITHFIELD	LEW11	LEWISTON #11	695.575	6.176	0.000	0.000	112.625	306	1,890	12
Low SAIDI	SMITHFIELD	5	***** circuits with Low SAIDI of 0.000 *****		0.000						
High SAIFI	SMITHFIELD	AMA11	AMALGA #11	271.423	12.960	0.000	0.000	20.943	227	2,942	7
Low SAIFI	SMITHFIELD	5	***** circuits with Low SAIFI of 0.000 *****		0.000						
High MAIFI	SMITHFIELD	AMA14	AMALGA #14	67.519	1.706	0.894	0.894	39.577	293	500	8
Low MAIFI	SMITHFIELD	21	***** circuits with Low MAIFI of 0.000 *****		0.000						
High MAIFI(e)	SMITHFIELD	AMA14	AMALGA #14	67.519	1.706	0.894	0.894	39.577	293	500	8
Low MAIFI(e)	SMITHFIELD	21	***** circuits with Low MAIFI(e) of 0.000 *****		0.000						
High Customer Minutes Lost	SMITHFIELD	NIB21	NIBLEY #21	300.572	2.520	0.000	0.000	119.275	2,346	5,911	15
Low Customer Minutes Lost	SMITHFIELD	5	***** circuits with Low Customer Minutes Lost of 0.000 *****								
Planned	SOUTH VALLEY (JORDAN VALLEY)			0.701	0.008	0.000	0.000	87.625	153,028	1,193	24
Unplanned	SOUTH VALLEY (JORDAN VALLEY)			51.007	0.706	0.092	0.092	72.248	153,028	108,041	581
Customer Requested	SOUTH VALLEY (JORDAN VALLEY)			0.000	0.000	0.000	0.000	0.000	153,028	0	0
High SAIDI	SOUTH VALLEY (JORDAN VALLEY)	90S12	90TH SOUTH #12	36,470.000	1,044.000	0.000	0.000	34.933	1	1,044	1
Low SAIDI	SOUTH VALLEY (JORDAN VALLEY)	32	***** circuits with Low SAIDI of 0.000 *****		0.000						
High SAIFI	SOUTH VALLEY (JORDAN VALLEY)	90S12	90TH SOUTH #12	36,470.000	1,044.000	0.000	0.000	34.933	1	1,044	1
Low SAIFI	SOUTH VALLEY (JORDAN VALLEY)	33	***** circuits with Low SAIFI of 0.000 *****		0.000						
High MAIFI	SOUTH VALLEY (JORDAN VALLEY)	MDV12	MIDVALE #12	121.432	0.297	4.734	4.734	408.862	458	136	2
Low MAIFI	SOUTH VALLEY (JORDAN VALLEY)	99	***** circuits with Low MAIFI of 0.000 *****		0.000						
High MAIFI(e)	SOUTH VALLEY (JORDAN VALLEY)	MDV12	MIDVALE #12	121.432	0.297	4.734	4.734	408.862	458	136	2
Low MAIFI(e)	SOUTH VALLEY (JORDAN VALLEY)	99	***** circuits with Low MAIFI(e) of 0.000 *****		0.000						
High Customer Minutes Lost	SOUTH VALLEY (JORDAN VALLEY)	BLF13	BLUFFDALE #13	418.368	5.814	0.002	0.002	71.959	1,323	7,692	11
Low Customer Minutes Lost	SOUTH VALLEY (JORDAN VALLEY)	31	***** circuits with Low Customer Minutes Lost of 0.000 *****								
Planned	TOOELE			0.697	0.005	0.000	0.000	139.400	9,368	44	1
Unplanned	TOOELE			262.949	1.889	0.923	0.923	139.200	9,368	17,698	80
Customer Requested	TOOELE			0.000	0.000	0.000	0.000	0.000	9,368	0	0
High SAIDI	TOOELE	STN13	STANSBURY #13	1,836.009	4.034	0.000	0.000	455.134	325	1,311	5
Low SAIDI	TOOELE	14	***** circuits with Low SAIDI of 0.000 *****		0.000						
High SAIFI	TOOELE	TOO11	TOOELE #11	747.515	4.415	0.000	0.000	169.313	511	2,256	6
Low SAIFI	TOOELE	14	***** circuits with Low SAIFI of 0.000 *****		0.000						
High MAIFI	TOOELE	TOO13	TOOELE #13	136.692	2.420	2.651	2.651	56.484	3,260	7,889	10
Low MAIFI	TOOELE	25	***** circuits with Low MAIFI of 0.000 *****		0.000						
High MAIFI(e)	TOOELE	TOO13	TOOELE #13	136.692	2.420	2.651	2.651	56.484	3,260	7,889	10
Low MAIFI(e)	TOOELE	25	***** circuits with Low MAIFI(e) of 0.000 *****		0.000						
High Customer Minutes Lost	TOOELE	STN13	STANSBURY #13	1,836.009	4.034	0.000	0.000	455.134	325	1,311	5
Low Customer Minutes Lost	TOOELE	14	***** circuits with Low Customer Minutes Lost of 0.000 *****								
Planned	TREMONTON			0.205	0.002	0.000	0.000	102.500	6,424	16	2
Unplanned	TREMONTON			48.007	0.418	0.000	0.000	114.849	6,424	2,683	53
Customer Requested	TREMONTON			0.000	0.000	0.000	0.000	0.000	6,424	0	0
High SAIDI	TREMONTON	BRR14	BEAR RIVER #14	235.501	1.415	0.000	0.000	166.432	349	494	4
Low SAIDI	TREMONTON	9	***** circuits with Low SAIDI of 0.000 *****		0.000						
High SAIFI	TREMONTON	BRR12	BEAR RIVER #12	205.146	2.886	0.000	0.000	71.083	219	632	6
Low SAIFI	TREMONTON	9	***** circuits with Low SAIFI of 0.000 *****		0.000						
High MAIFI	TREMONTON	WSH01	WASHAKIE #1	0.000	0.000	0.000	0.000	0.000	1	0	0

1st Quarter Fiscal Year 2002 04/01/2001 to 06/30/2001

Measure	Operating Area	UCID	Circuit Name	SAIDI (minutes)	SAIFI	MAIFI	MAIFI(e)	CAIDI	Average Customer Count	Customers Off	Number of Occurrences
Low MAIFI	TREMONTON	22	***** circuits with Low MAIFI of 0.000 *****			0.000					
High MAIFI(e)	TREMONTON	WSH01	WASHAKIE #1	0.000	0.000	0.000	0.000	0.000	1	0	0
Low MAIFI(e)	TREMONTON	22	***** circuits with Low MAIFI(e) of 0.000 *****				0.000				
High Customer Minutes Lost	TREMONTON	FDG11	FIELDING #11	188.996	1.600	0.000	0.000	118.123	558	893	9
Low Customer Minutes Lost	TREMONTON	9	***** circuits with Low Customer Minutes Lost of 0.000 *****								
Planned	UINTA			0.000	0.000	0.000	0.000	0.000	2	0	0
Unplanned	UINTA			0.000	0.000	0.000	0.000	0.000	2	0	0
Customer Requested	UINTA			0.000	0.000	0.000	0.000	0.000	2	0	0
High SAIDI	UINTA	D029	PAINTER-CLEAR CREEK-138KV (UTAH SECTION)	0.000	0.000	0.000	0.000	0.000	2	0	0
Low SAIDI	UINTA	D029	PAINTER-CLEAR CREEK-138KV (UTAH SECTION)	0.000	0.000	0.000	0.000	0.000	2	0	0
High SAIFI	UINTA	D029	PAINTER-CLEAR CREEK-138KV (UTAH SECTION)	0.000	0.000	0.000	0.000	0.000	2	0	0
Low SAIFI	UINTA	D029	PAINTER-CLEAR CREEK-138KV (UTAH SECTION)	0.000	0.000	0.000	0.000	0.000	2	0	0
High MAIFI	UINTA	D029	PAINTER-CLEAR CREEK-138KV (UTAH SECTION)	0.000	0.000	0.000	0.000	0.000	2	0	0
Low MAIFI	UINTA	D029	PAINTER-CLEAR CREEK-138KV (UTAH SECTION)	0.000	0.000	0.000	0.000	0.000	2	0	0
High MAIFI(e)	UINTA	D029	PAINTER-CLEAR CREEK-138KV (UTAH SECTION)	0.000	0.000	0.000	0.000	0.000	2	0	0
Low MAIFI(e)	UINTA	D029	PAINTER-CLEAR CREEK-138KV (UTAH SECTION)	0.000	0.000	0.000	0.000	0.000	2	0	0
High Customer Minutes Lost	UINTA	D029	PAINTER-CLEAR CREEK-138KV (UTAH SECTION)	0.000	0.000	0.000	0.000	0.000	2	0	0
Low Customer Minutes Lost	UINTA	D029	PAINTER-CLEAR CREEK-138KV (UTAH SECTION)	0.000	0.000	0.000	0.000	0.000	2	0	0

Fiscal YTD Fiscal Year 2002 04/01/2001 to 06/30/2001

Measure	Operating Area	UCID	Circuit Name	SAIDI (minutes)	SAIFI	MAIFI	MAIFI(e)	CAIDI	Average Customer Count	Customers Off	Number of Occurrences
Customer Requested	Utah			0.001	0.000	0.000	0.000	0.000	628,250	5,495	4
Planned	Utah			1.884	0.013	0.000	0.000	144.923	628,250	8,405	106
Unplanned	Utah			53.840	0.610	0.104	0.103	88.262	628,250	383,051	5,398
								0.000			
Planned	AMERICAN FORK			1.304	0.025	0.000	0.000	52.160	63,521	1,605	9
Unplanned	AMERICAN FORK			30.812	0.459	0.075	0.075	67.129	63,521	29,152	206
Customer Requested	AMERICAN FORK			0.004	0.000	0.000	0.000	0.000	63,521	1	1
High SAIDI	AMERICAN FORK	EUR12	EUREKA #12	6,095.000	43.000	0.000	0.000	141.744	1	43	1
Low SAIDI	AMERICAN FORK	17	***** circuits with Low SAIDI of 0.000 *****	0.000							
High SAIFI	AMERICAN FORK	EUR12	EUREKA #12	6,095.000	43.000	0.000	0.000	141.744	1	43	1
Low SAIFI	AMERICAN FORK	17	***** circuits with Low SAIFI of 0.000 *****		0.000						
High MAIFI	AMERICAN FORK	CHW15	CHERRYWOOD #15	0.419	0.008	1.698	1.698	52.375	2,125	17	4
Low MAIFI	AMERICAN FORK	69	***** circuits with Low MAIFI of 0.000 *****			0.000					
High MAIFI(e)	AMERICAN FORK	CHW15	CHERRYWOOD #15	0.419	0.008	1.698	1.698	52.375	2,125	17	4
Low MAIFI(e)	AMERICAN FORK	63	***** circuits with Low MAIFI(e) of 0.000 *****				0.000				
High Customer Minutes Lost	AMERICAN FORK	SAR13	SARATOGA #13	882.313	5.166	0.124	0.124	170.792	453	2,340	6
Low Customer Minutes Lost	AMERICAN FORK	15	***** circuits with Low Customer Minutes Lost of 0.000 *****								
Planned	ASHLEY			0.000	0.000	0.000	0.000	0.000	9,382	0	0
Unplanned	ASHLEY			110.742	0.684	0.105	0.105	161.904	9,382	6,418	50
Customer Requested	ASHLEY			0.000	0.000	0.000	0.000	0.000	9,382	0	0
High SAIDI	ASHLEY	VER12	VERNAL #12	428.703	1.164	0.000	0.000	368.302	1,071	1,247	6
Low SAIDI	ASHLEY	5	***** circuits with Low SAIDI of 0.000 *****	0.000							
High SAIFI	ASHLEY	VER14	VERNAL #14	154.839	1.641	0.561	0.561	94.356	1,750	2,872	8
Low SAIFI	ASHLEY	5	***** circuits with Low SAIFI of 0.000 *****		0.000						
High MAIFI	ASHLEY	VER14	VERNAL #14	154.839	1.641	0.561	0.561	94.356	1,750	2,872	8
Low MAIFI	ASHLEY	10	***** circuits with Low MAIFI of 0.000 *****			0.000					
High MAIFI(e)	ASHLEY	VER14	VERNAL #14	154.839	1.641	0.561	0.561	94.356	1,750	2,872	8
Low MAIFI(e)	ASHLEY	10	***** circuits with Low MAIFI(e) of 0.000 *****				0.000				
High Customer Minutes Lost	ASHLEY	VER12	VERNAL #12	428.703	1.164	0.000	0.000	368.302	1,071	1,247	6
Low Customer Minutes Lost	ASHLEY	5	***** circuits with Low Customer Minutes Lost of 0.000 *****								
Planned	CANYONLANDS			0.000	0.000	0.000	0.000	0.000	14,226	0	0
Unplanned	CANYONLANDS			13.633	0.091	0.001	0.001	149.813	14,226	1,300	37
Customer Requested	CANYONLANDS			0.000	0.000	0.000	0.000	0.000	14,226	0	0
High SAIDI	CANYONLANDS	RAT22	RATTLESNAKE #22	156.380	0.519	0.000	0.000	301.310	800	415	9
Low SAIDI	CANYONLANDS	28	***** circuits with Low SAIDI of 0.000 *****	0.000							
High SAIFI	CANYONLANDS	WSW11	WESTWATER #11	78.080	1.110	0.000	0.000	70.342	100	111	2
Low SAIFI	CANYONLANDS	28	***** circuits with Low SAIFI of 0.000 *****		0.000						
High MAIFI	CANYONLANDS	WSW11	WESTWATER #11	78.080	1.110	0.000	0.000	70.342	100	111	2
Low MAIFI	CANYONLANDS	39	***** circuits with Low MAIFI of 0.000 *****			0.000					
High MAIFI(e)	CANYONLANDS	WSW11	WESTWATER #11	78.080	1.110	0.000	0.000	70.342	100	111	2
Low MAIFI(e)	CANYONLANDS	39	***** circuits with Low MAIFI(e) of 0.000 *****				0.000				
High Customer Minutes Lost	CANYONLANDS	RAT22	RATTLESNAKE #22	156.380	0.519	0.000	0.000	301.310	800	415	9
Low Customer Minutes Lost	CANYONLANDS	28	***** circuits with Low Customer Minutes Lost of 0.000 *****								
Planned	CARBON			1.790	0.013	0.000	0.000	137.692	10,248	129	2
Unplanned	CARBON			70.419	0.761	0.009	0.009	92.535	10,248	7,796	62
Customer Requested	CARBON			0.000	0.000	0.000	0.000	0.000	10,248	0	0

Fiscal YTD Fiscal Year 2002 04/01/2001 to 06/30/2001

Measure	Operating Area	UCID	Circuit Name	SAIDI (minutes)	SAIFI	MAIFI	MAIFI(e)	CAIDI	Average Customer Count	Customers Off	Number of Occurrences
High SAIDI	CARBON	FER11	FERRON #11	328.430	1.790	0.000	0.000	183.480	920	1,647	9
Low SAIDI	CARBON	29	***** circuits with Low SAIDI of 0.000 *****	0.000							
High SAIFI	CARBON	MAT12	MATHIS #12	296.604	3.878	0.000	0.000	76.484	498	1,931	6
Low SAIFI	CARBON	29	***** circuits with Low SAIFI of 0.000 *****		0.000						
High MAIFI	CARBON	CCK11	CLEAR CREEK #11	0.000	0.000	1.568	1.568	0.000	37	0	0
Low MAIFI	CARBON	44	***** circuits with Low MAIFI of 0.000 *****			0.000					
High MAIFI(e)	CARBON	CCK11	CLEAR CREEK #11	0.000	0.000	1.568	1.568	0.000	37	0	0
Low MAIFI(e)	CARBON	44	***** circuits with Low MAIFI(e) of 0.000 *****				0.000				
High Customer Minutes Lost	CARBON	FER11	FERRON #11	328.430	1.790	0.000	0.000	183.480	920	1,647	9
Low Customer Minutes Lost	CARBON	27	***** circuits with Low Customer Minutes Lost of 0.000 *****								
Planned	CEDAR CITY			0.163	0.005	0.000	0.000	32.600	16,630	77	3
Unplanned	CEDAR CITY			25.277	0.330	0.007	0.007	76.597	16,630	5,484	96
Customer Requested	CEDAR CITY			0.006	0.000	0.000	0.000	0.000	16,630	1	1
High SAIDI	CEDAR CITY	MDD24	MIDDLETON #24	802.981	10.406	0.000	0.000	77.165	318	3,309	15
Low SAIDI	CEDAR CITY	57	***** circuits with Low SAIDI of 0.000 *****	0.000							
High SAIFI	CEDAR CITY	MDD24	MIDDLETON #24	802.981	10.406	0.000	0.000	77.165	318	3,309	15
Low SAIFI	CEDAR CITY	57	***** circuits with Low SAIFI of 0.000 *****		0.000						
High MAIFI	CEDAR CITY	CLM15	COLEMAN #15	101.500	1.780	1.560	1.560	57.022	50	89	6
Low MAIFI	CEDAR CITY	81	***** circuits with Low MAIFI of 0.000 *****			0.000					
High MAIFI(e)	CEDAR CITY	CLM15	COLEMAN #15	101.500	1.780	1.560	1.560	57.022	50	89	6
Low MAIFI(e)	CEDAR CITY	81	***** circuits with Low MAIFI(e) of 0.000 *****				0.000				
High Customer Minutes Lost	CEDAR CITY	MDD24	MIDDLETON #24	802.981	10.406	0.000	0.000	77.165	318	3,309	15
Low Customer Minutes Lost	CEDAR CITY	55	***** circuits with Low Customer Minutes Lost of 0.000 *****								
Planned	COTTONWOOD			1.766	0.063	0.000	0.000	28.032	3,913	245	3
Unplanned	COTTONWOOD			294.013	2.308	0.142	0.071	127.389	3,913	9,032	37
Customer Requested	COTTONWOOD			0.000	0.000	0.000	0.000	0.000	3,913	0	0
High SAIDI	COTTONWOOD	DMP13	DIMPLE DELL #13	430.628	3.696	0.000	0.000	116.512	1,232	4,553	8
Low SAIDI	COTTONWOOD	DMP11	DIMPLE DELL #11	151.252	1.206	0.000	0.000	125.416	925	1,116	9
High SAIFI	COTTONWOOD	DMP13	DIMPLE DELL #13	430.628	3.696	0.000	0.000	116.512	1,232	4,553	8
Low SAIFI	COTTONWOOD	DMP11	DIMPLE DELL #11	151.252	1.206	0.000	0.000	125.416	925	1,116	9
High MAIFI	COTTONWOOD	DMP12	DIMPLE DELL #12	273.366	1.915	0.317	0.159	142.750	1,756	3,363	20
Low MAIFI	COTTONWOOD	2	***** circuits with Low MAIFI of 0.000 *****			0.000					
High MAIFI(e)	COTTONWOOD	DMP12	DIMPLE DELL #12	273.366	1.915	0.317	0.159	142.750	1,756	3,363	20
Low MAIFI(e)	COTTONWOOD	2	***** circuits with Low MAIFI(e) of 0.000 *****				0.000				
High Customer Minutes Lost	COTTONWOOD	DMP13	DIMPLE DELL #13	430.628	3.696	0.000	0.000	116.512	1,232	4,553	8
Low Customer Minutes Lost	COTTONWOOD	DMP11	DIMPLE DELL #11	151.252	1.206	0.000	0.000	125.416	925	1,116	9
Planned	DELTA			0.000	0.000	0.000	0.000	0.000	5,766	0	0
Unplanned	DELTA			34.214	0.306	0.990	0.990	111.810	5,766	1,767	42
Customer Requested	DELTA			0.000	0.000	0.000	0.000	0.000	5,766	0	0
High SAIDI	DELTA	STH21	SUTHERLAND #21	225.450	2.305	1.039	1.039	97.809	462	1,065	22
Low SAIDI	DELTA	19	***** circuits with Low SAIDI of 0.000 *****	0.000							
High SAIFI	DELTA	STH21	SUTHERLAND #21	225.450	2.305	1.039	1.039	97.809	462	1,065	22
Low SAIFI	DELTA	19	***** circuits with Low SAIFI of 0.000 *****		0.000						
High MAIFI	DELTA	STH21	SUTHERLAND #21	225.450	2.305	1.039	1.039	97.809	462	1,065	22
Low MAIFI	DELTA	4	***** circuits with Low MAIFI of 0.000 *****			0.000					
High MAIFI(e)	DELTA	STH21	SUTHERLAND #21	225.450	2.305	1.039	1.039	97.809	462	1,065	22

Fiscal YTD Fiscal Year 2002 04/01/2001 to 06/30/2001

Measure	Operating Area	UCID	Circuit Name	SAIDI (minutes)	SAIFI	MAIFI	MAIFI(e)	CAIDI	Average Customer Count	Customers Off	Number of Occurrences
Low MAIFI(e)	DELTA	4	***** circuits with Low MAIFI(e) of 0.000 *****				0.000				
High Customer Minutes Lost	DELTA	STH21	SUTHERLAND #21	225.450	2.305	1.039	1.039	97.809	462	1,065	22
Low Customer Minutes Lost	DELTA	2	***** circuits with Low Customer Minutes Lost of 0.000 *****								
Planned	LAYTON			0.174	0.002	0.000	0.000	87.000	37,001	70	6
Unplanned	LAYTON			65.254	1.009	0.012	0.012	64.672	37,001	37,319	148
Customer Requested	LAYTON			0.000	0.000	0.000	0.000	0.000	37,001	0	0
High SAIDI	LAYTON	SYR15	SYRACUSE #15	49,394.000	#####	0.000	0.000	36.028	1	1,371	4
Low SAIDI	LAYTON	12	***** circuits with Low SAIDI of 0.000 *****	0.000							
High SAIFI	LAYTON	SYR15	SYRACUSE #15	49,394.000	#####	0.000	0.000	36.028	1	1,371	4
Low SAIFI	LAYTON	12	***** circuits with Low SAIFI of 0.000 *****		0.000						
High MAIFI	LAYTON	ANG14	ANGEL #14	62.155	1.575	0.167	0.167	39.463	2,050	3,228	4
Low MAIFI	LAYTON	34	***** circuits with Low MAIFI of 0.000 *****			0.000					
High MAIFI(e)	LAYTON	ANG14	ANGEL #14	62.155	1.575	0.167	0.167	39.463	2,050	3,228	4
Low MAIFI(e)	LAYTON	34	***** circuits with Low MAIFI(e) of 0.000 *****				0.000				
High Customer Minutes Lost	LAYTON	SYR11	SYRACUSE #11	7,654.121	111.168	0.000	0.000	68.852	107	11,895	8
Low Customer Minutes Lost	LAYTON	12	***** circuits with Low Customer Minutes Lost of 0.000 *****								
Planned	METRO			2.478	0.015	0.000	0.000	165.200	184,202	2,814	30
Unplanned	METRO			32.412	0.359	0.136	0.136	90.284	184,202	66,186	633
Customer Requested	METRO			0.000	0.000	0.000	0.000	0.000	184,202	0	0
High SAIDI	METRO	UNI01	UNIVERSITY #1	8,327.000	111.000	0.000	0.000	75.018	1	111	1
Low SAIDI	METRO	115	***** circuits with Low SAIDI of 0.000 *****	0.000							
High SAIFI	METRO	UNI01	UNIVERSITY #1	8,327.000	111.000	0.000	0.000	75.018	1	111	1
Low SAIFI	METRO	115	***** circuits with Low SAIFI of 0.000 *****		0.000						
High MAIFI	METRO	VLY13	VALLEY CENTER #13	5.834	0.031	3.461	3.461	188.194	453	14	1
Low MAIFI	METRO	220	***** circuits with Low MAIFI of 0.000 *****			0.000					
High MAIFI(e)	METRO	VLY13	VALLEY CENTER #13	5.834	0.031	3.461	3.461	188.194	453	14	1
Low MAIFI(e)	METRO	220	***** circuits with Low MAIFI(e) of 0.000 *****				0.000				
High Customer Minutes Lost	METRO	LPK12	LAKEPARK #12	263.723	0.971	0.000	0.000	271.599	3,065	2,975	3
Low Customer Minutes Lost	METRO	114	***** circuits with Low Customer Minutes Lost of 0.000 *****								
Planned	MILFORD			0.000	0.000	0.000	0.000	0.000	1,679	0	0
Unplanned	MILFORD			189.046	1.591	0.007	0.007	118.822	1,679	2,672	31
Customer Requested	MILFORD			0.000	0.000	0.000	0.000	0.000	1,679	0	0
High SAIDI	MILFORD	BKL11	BROOKLAWN #11	1,372.256	9.529	0.000	0.000	144.008	121	1,153	9
Low SAIDI	MILFORD	8	***** circuits with Low SAIDI of 0.000 *****	0.000							
High SAIFI	MILFORD	BKL11	BROOKLAWN #11	1,372.256	9.529	0.000	0.000	144.008	121	1,153	9
Low SAIFI	MILFORD	8	***** circuits with Low SAIFI of 0.000 *****		0.000						
High MAIFI	MILFORD	SML12	SOUTH MILFORD #12	5.573	0.031	0.115	0.115	179.774	96	3	3
Low MAIFI	MILFORD	18	***** circuits with Low MAIFI of 0.000 *****			0.000					
High MAIFI(e)	MILFORD	SML12	SOUTH MILFORD #12	5.573	0.031	0.115	0.115	179.774	96	3	3
Low MAIFI(e)	MILFORD	18	***** circuits with Low MAIFI(e) of 0.000 *****				0.000				
High Customer Minutes Lost	MILFORD	BKL11	BROOKLAWN #11	1,372.256	9.529	0.000	0.000	144.008	121	1,153	9
Low Customer Minutes Lost	MILFORD	8	***** circuits with Low Customer Minutes Lost of 0.000 *****								
Planned	OGDEN			6.499	0.029	0.002	0.002	224.103	70,416	2,007	22
Unplanned	OGDEN			74.330	0.712	0.050	0.050	104.396	70,416	50,103	309
Customer Requested	OGDEN			0.006	0.000	0.000	0.000	0.000	70,416	9	2
High SAIDI	OGDEN	WOG12	WEST OGDEN #12	1,250.750	19.394	0.000	0.000	64.492	188	3,646	10

Fiscal YTD Fiscal Year 2002 04/01/2001 to 06/30/2001

Measure	Operating Area	UCID	Circuit Name	SAIDI (minutes)	SAIFI	MAIFI	MAIFI(e)	CAIDI	Average Customer Count	Customers Off	Number of Occurrences
Low SAIDI	OGDEN	49	***** circuits with Low SAIDI of 0.000 *****	0.000							
High SAIFI	OGDEN	WOG12	WEST OGDEN #12	1,250.750	19.394	0.000	0.000	64.492	188	3,646	10
Low SAIFI	OGDEN	49	***** circuits with Low SAIFI of 0.000 *****		0.000						
High MAIFI	OGDEN	NOG12	NORTH OGDEN #12	15.648	0.132	1.070	1.070	118.545	2,000	264	8
Low MAIFI	OGDEN	99	***** circuits with Low MAIFI of 0.000 *****			0.000					
High MAIFI(e)	OGDEN	NOG12	NORTH OGDEN #12	15.648	0.132	1.070	1.070	118.545	2,000	264	8
Low MAIFI(e)	OGDEN	99	***** circuits with Low MAIFI(e) of 0.000 *****				0.000				
High Customer Minutes Lost	OGDEN	BRK11	BRICKYARD #11	514.345	1.943	0.000	0.000	264.717	1,306	2,537	6
Low Customer Minutes Lost	OGDEN	49	***** circuits with Low Customer Minutes Lost of 0.000 *****								
Planned	PARK CITY			2.077	0.011	0.000	0.000	188.818	16,060	177	2
Unplanned	PARK CITY			81.703	0.659	0.003	0.003	123.980	16,060	10,579	119
Customer Requested	PARK CITY			0.000	0.000	0.000	0.000	0.000	16,060	0	0
High SAIDI	PARK CITY	DSR11	DESERET #11	411.000	1.000	0.000	0.000	411.000	1	1	1
Low SAIDI	PARK CITY	12	***** circuits with Low SAIDI of 0.000 *****	0.000							
High SAIFI	PARK CITY	JUD12	JUDGE #12	251.583	4.750	3.167	3.167	52.965	12	57	3
Low SAIFI	PARK CITY	12	***** circuits with Low SAIFI of 0.000 *****		0.000						
High MAIFI	PARK CITY	JUD12	JUDGE #12	251.583	4.750	3.167	3.167	52.965	12	57	3
Low MAIFI	PARK CITY	33	***** circuits with Low MAIFI of 0.000 *****			0.000					
High MAIFI(e)	PARK CITY	JUD12	JUDGE #12	251.583	4.750	3.167	3.167	52.965	12	57	3
Low MAIFI(e)	PARK CITY	33	***** circuits with Low MAIFI(e) of 0.000 *****				0.000				
High Customer Minutes Lost	PARK CITY	OKY11	OAKLEY #11	405.549	1.923	0.000	0.000	210.894	1,936	3,722	28
Low Customer Minutes Lost	PARK CITY	12	***** circuits with Low Customer Minutes Lost of 0.000 *****								
Planned	SALINA			0.268	0.002	0.000	0.000	134.000	13,236	24	1
Unplanned	SALINA			44.883	0.324	0.014	0.014	138.528	13,236	4,295	76
Customer Requested	SALINA			0.000	0.000	0.000	0.000	0.000	13,236	0	0
High SAIDI	SALINA	CTL11	CENTRAL #11	572.556	5.172	0.000	0.000	110.703	99	512	5
Low SAIDI	SALINA	43	***** circuits with Low SAIDI of 0.000 *****	0.000							
High SAIFI	SALINA	CTL11	CENTRAL #11	572.556	5.172	0.000	0.000	110.703	99	512	5
Low SAIFI	SALINA	43	***** circuits with Low SAIFI of 0.000 *****		0.000						
High MAIFI	SALINA	SCI11	SCPIO #11	269.797	2.087	1.000	1.000	129.275	172	359	3
Low MAIFI	SALINA	66	***** circuits with Low MAIFI of 0.000 *****			0.000					
High MAIFI(e)	SALINA	SCI11	SCPIO #11	269.797	2.087	1.000	1.000	129.275	172	359	3
Low MAIFI(e)	SALINA	66	***** circuits with Low MAIFI(e) of 0.000 *****				0.000				
High Customer Minutes Lost	SALINA	GUN12	GUNNISON #12	524.454	1.233	0.000	0.000	425.348	339	418	5
Low Customer Minutes Lost	SALINA	43	***** circuits with Low Customer Minutes Lost of 0.000 *****								
Planned	SMITHFIELD			0.013	0.000	0.000	0.000	0.000	13,148	4	1
Unplanned	SMITHFIELD			131.240	1.713	0.068	0.068	76.614	13,148	22,526	139
Customer Requested	SMITHFIELD			0.000	0.000	0.000	0.000	0.000	13,148	0	0
High SAIDI	SMITHFIELD	LEW11	LEWISTON #11	695.575	6.176	0.000	0.000	112.625	306	1,890	12
Low SAIDI	SMITHFIELD	5	***** circuits with Low SAIDI of 0.000 *****	0.000							
High SAIFI	SMITHFIELD	AMA11	AMALGA #11	271.423	12.960	0.000	0.000	20.943	227	2,942	7
Low SAIFI	SMITHFIELD	5	***** circuits with Low SAIFI of 0.000 *****		0.000						
High MAIFI	SMITHFIELD	AMA14	AMALGA #14	67.519	1.706	0.894	0.894	39.577	293	500	8
Low MAIFI	SMITHFIELD	21	***** circuits with Low MAIFI of 0.000 *****			0.000					
High MAIFI(e)	SMITHFIELD	AMA14	AMALGA #14	67.519	1.706	0.894	0.894	39.577	293	500	8
Low MAIFI(e)	SMITHFIELD	21	***** circuits with Low MAIFI(e) of 0.000 *****				0.000				

Fiscal YTD Fiscal Year 2002 04/01/2001 to 06/30/2001

Measure	Operating Area	UCID	Circuit Name	SAIDI (minutes)	SAIFI	MAIFI	MAIFI(e)	CAIDI	Average Customer Count	Customers Off	Number of Occurrences
High Customer Minutes Lost	SMITHFIELD	NIB21	NIBLEY #21	300.572	2.520	0.000	0.000	119.275	2,346	5,911	15
Low Customer Minutes Lost	SMITHFIELD	5	***** circuits with Low Customer Minutes Lost of 0.000 *****								
Planned	SOUTH VALLEY			0.701	0.008	0.000	0.000	87.625	153,028	1,193	24
Customer Requested	SOUTH VALLEY			61.007	0.706	0.092	0.092	72.248	153,028	108,041	581
High SAIDI	SOUTH VALLEY			0.000	0.000	0.000	0.000	0.000	153,028	0	0
Low SAIDI	SOUTH VALLEY	90S12	90TH SOUTH #12	36,470.000	#####	0.000	0.000	34.933	1	1,044	1
High SAIFI	SOUTH VALLEY	32	***** circuits with Low SAIDI of 0.000 *****	0.000							
Low SAIFI	SOUTH VALLEY	90S12	90TH SOUTH #12	36,470.000	#####	0.000	0.000	34.933	1	1,044	1
High MAIFI	SOUTH VALLEY	33	***** circuits with Low SAIFI of 0.000 *****	0.000							
Low MAIFI	SOUTH VALLEY	MDV12	MIDVALE #12	121.432	0.297	4.734	4.734	408.862	458	136	2
High MAIFI(e)	SOUTH VALLEY	99	***** circuits with Low MAIFI of 0.000 *****	0.000							
Low MAIFI(e)	SOUTH VALLEY	MDV12	MIDVALE #12	121.432	0.297	4.734	4.734	408.862	458	136	2
High Customer Minutes Lost	SOUTH VALLEY	99	***** circuits with Low MAIFI(e) of 0.000 *****	0.000							
Low Customer Minutes Lost	SOUTH VALLEY	BLF13	BLUFFDALE #13	418.368	5.814	0.002	0.002	71.959	1,323	7,692	11
Planned	TOOELE	31	***** circuits with Low Customer Minutes Lost of 0.000 *****								
Unplanned	TOOELE			0.697	0.005	0.000	0.000	139.400	9,368	44	1
Customer Requested	TOOELE			262.949	1.889	0.923	0.923	139.200	9,368	17,698	80
High SAIDI	TOOELE			0.000	0.000	0.000	0.000	0.000	9,368	0	0
Low SAIDI	TOOELE	STN13	STANSBURY #13	1,836.009	4.034	0.000	0.000	455.134	325	1,311	5
High SAIFI	TOOELE	14	***** circuits with Low SAIDI of 0.000 *****	0.000							
Low SAIFI	TOOELE	TOO11	TOOELE #11	747.515	4.415	0.000	0.000	169.313	511	2,256	6
High MAIFI	TOOELE	14	***** circuits with Low SAIFI of 0.000 *****	0.000							
Low MAIFI	TOOELE	TOO13	TOOELE #13	136.692	2.420	2.651	2.651	56.484	3,260	7,889	10
High MAIFI(e)	TOOELE	25	***** circuits with Low MAIFI of 0.000 *****	0.000							
Low MAIFI(e)	TOOELE	TOO13	TOOELE #13	136.692	2.420	2.651	2.651	56.484	3,260	7,889	10
High Customer Minutes Lost	TOOELE	25	***** circuits with Low MAIFI(e) of 0.000 *****	0.000							
Low Customer Minutes Lost	TOOELE	STN13	STANSBURY #13	1,836.009	4.034	0.000	0.000	455.134	325	1,311	5
Planned	TREMONTON	14	***** circuits with Low Customer Minutes Lost of 0.000 *****								
Unplanned	TREMONTON			0.205	0.002	0.000	0.000	102.500	6,424	16	2
Customer Requested	TREMONTON			48.007	0.418	0.000	0.000	114.849	6,424	2,683	53
High SAIDI	TREMONTON			0.000	0.000	0.000	0.000	0.000	6,424	0	0
Low SAIDI	TREMONTON	BRR14	BEAR RIVER #14	235.501	1.415	0.000	0.000	166.432	349	494	4
High SAIFI	TREMONTON	9	***** circuits with Low SAIDI of 0.000 *****	0.000							
Low SAIFI	TREMONTON	BRR12	BEAR RIVER #12	205.146	2.886	0.000	0.000	71.083	219	632	6
High MAIFI	TREMONTON	9	***** circuits with Low SAIFI of 0.000 *****	0.000							
Low MAIFI	TREMONTON	WISH01	WASHAKIE #1	0.000	0.000	0.000	0.000	0.000	1	0	0
High MAIFI(e)	TREMONTON	22	***** circuits with Low MAIFI of 0.000 *****	0.000							
Low MAIFI(e)	TREMONTON	WISH01	WASHAKIE #1	0.000	0.000	0.000	0.000	0.000	1	0	0
High Customer Minutes Lost	TREMONTON	22	***** circuits with Low MAIFI(e) of 0.000 *****	0.000							
Low Customer Minutes Lost	TREMONTON	FDG11	FIELDING #11	188.996	1.600	0.000	0.000	118.123	558	893	9
Planned	UINTA	9	***** circuits with Low Customer Minutes Lost of 0.000 *****								
Unplanned	UINTA			0.000	0.000	0.000	0.000	0.000	2	0	0
Customer Requested	UINTA			0.000	0.000	0.000	0.000	0.000	2	0	0
High SAIDI	UINTA			0.000	0.000	0.000	0.000	0.000	2	0	0
Low SAIDI	UINTA	D029	PAINTER-CLEAR CREEK-138KV	0.000	0.000	0.000	0.000	0.000	2	0	0
		D028	PAINTER-CLEAR CREEK-138KV	0.000	0.000	0.000	0.000	0.000	2	0	0

Fiscal YTD Fiscal Year 2002 04/01/2001 to 06/30/2001

Measure	Operating Area	UCID	Circuit Name	SAIDI (minutes)	SAIFI	MAIFI	MAIFI(e)	CAIDI	Average Customer Count	Customers Off	Number of Occurrences
High SAIFI	UINTA	D029	PANTER-CLEAR CREEK-138KV	0.000	0.000	0.000	0.000	0.000	2	0	0
Low SAIFI	UINTA	D029	PANTER-CLEAR CREEK-138KV	0.000	0.000	0.000	0.000	0.000	2	0	0
High MAIFI	UINTA	D029	PANTER-CLEAR CREEK-138KV	0.000	0.000	0.000	0.000	0.000	2	0	0
Low MAIFI	UINTA	D029	PANTER-CLEAR CREEK-138KV	0.000	0.000	0.000	0.000	0.000	2	0	0
High MAIFI(e)	UINTA	D029	PANTER-CLEAR CREEK-138KV	0.000	0.000	0.000	0.000	0.000	2	0	0
Low MAIFI(e)	UINTA	D029	PANTER-CLEAR CREEK-138KV	0.000	0.000	0.000	0.000	0.000	2	0	0
High Customer Minutes Lost	UINTA	D029	PANTER-CLEAR CREEK-138KV	0.000	0.000	0.000	0.000	0.000	2	0	0
Low Customer Minutes Lost	UINTA	D029	PANTER-CLEAR CREEK-138KV	0.000	0.000	0.000	0.000	0.000	2	0	0

Attachment B
Service Quality Standards
1st Quarter Fiscal 2002
Worst Performing Feeders

Five worst feeders - North									
Circuit	Circuit Name	12 Mo. Rolling Average Circuit SAIDI	Annual Goal SAIDI	12 Mo. Rolling Average Circuit SAIFI	Annual Goal SAIFI	12 Mo. Rolling Average Circuit MAIFI	Annual Goal MAIFI	Location of Circuit	Corrective Action
WDS11	WOODS CROSS #11	290.289	1.126	1.720	1.250	4.390	6.221	Metro	Under Investigation
EDN11	EDEN #11	446.031	1.126	2.572	1.250	0.000	6.221	Ogden	Under Investigation
BTH11	BOTHWELL #11	0.353	1.126	0.007	1.250	2.000	6.221	Tremonton	Under Investigation
JOR04	JORDAN #4	500.261	1.126	2.870	1.250	5.000	6.221	Metro	Under Investigation
SNO11	SNOWVILLE #11	434.000	1.126	5.263	1.250	7.000	6.221	Tremonton	Under Investigation

Six worst feeders - South									
Circuit	Circuit Name	12 Mo. Rolling Average Circuit SAIDI	Annual Goal SAIDI	12 Mo. Rolling Average Circuit SAIFI	Annual Goal SAIFI	12 Mo. Rolling Average Circuit MAIFI	Annual Goal MAIFI	Location of Circuit	Corrective Action
RAT22	RATTLESNAKE #22	508.731	1.126	3.724	1.250	3.000	6.221	Canyonlands	Under Investigation
LRK11	LARK #11	750.594	1.126	1.419	1.250	7.000	6.221	South Valley	Under Investigation
MDD24	MIDDLETON #24	1060.236	1.126	13.503	1.250	22.000	6.221	Cedar City	Under Investigation
WIT11	WHITE MESA #11	561.381	1.126	3.357	1.250	13.054	6.221	Canyonlands	Under Investigation
CLM15	COLEMAN #15	465.260	1.126	4.880	1.250	3.560	6.221	Cedar City	Under Investigation
SML11	SOUTH MILFORD #11	1291.767	1.126	14.467	1.250	4.000	6.221	Milford	Under Investigation

Attachment B
Service Quality Standards
1st Quarter Fiscal 2002
Worst Performing Feeders

Five worst feeders - North									
Circuit	Circuit Name	YTD Average Circuit SAIDI	Annual Goal SAIDI	YTD Circuit SAIFI	Annual Goal SAIFI	YTD Circuit MAIFI	Annual Goal MAIFI	Location of Circuit	Corrective Action
WDS11	WOODS CROSS #11	53.411	1.126	0.214	1.250	0.390	6.221	Metro	Under Investigation
EDN11	EDEN #11	84.054	1.126	0.719	1.250	0.000	6.221	Ogden	Under Investigation
BTH11	BOTHWELL #11	0.000	1.126	0.000	1.250	0.000	6.221	Tremonton	Under Investigation
JOR04	JORDAN #4	7.913	1.126	0.043	1.250	0.000	6.221	Metro	Under Investigation
SNO11	SNOWVILLE #11	46.895	1.126	0.579	1.250	0.000	6.221	Tremonton	Under Investigation

Six worst feeders - South									
Circuit	Circuit Name	YTD Average Circuit SAIDI	Annual Goal SAIDI	YTD Circuit SAIFI	Annual Goal SAIFI	YTD Circuit MAIFI	Annual Goal MAIFI	Location of Circuit	Corrective Action
RAT22	RATTLESNAKE #22	156.380	1.126	0.519	1.250	0.000	6.221	Canyonlands	Under Investigation
LRK11	LARK #11	693.796	1.126	0.998	1.250	0.000	6.221	South Valley	Under Investigation
MDD24	MIDDLETON #24	802.981	1.126	10.406	1.250	0.000	6.221	Cedar City	Under Investigation
WIT11	WHITE MESA #11	0.000	1.126	0.000	1.250	0.000	6.221	Canyonlands	Under Investigation
CLM15	COLEMAN #15	101.500	1.126	1.780	1.250	1.560	6.221	Cedar City	Under Investigation
SML11	SOUTH MILFORD #11	434.900	1.126	5.100	1.250	0.000	6.221	Milford	Under Investigation

Customer Service Commitments

UTAH FAILURES April-June 2001

<i>American Fork</i>	<i>CG #</i>	<i>Description</i>	<i>1st Qtr</i>	<i>Paid</i>
	CG4	Estimates	15	\$750
<i>Total</i>			<i>15</i>	<i>\$750</i>
<i>Cedar City</i>	<i>CG #</i>	<i>Description</i>	<i>1st Qtr</i>	<i>Paid</i>
	CG3	Switching on Power	1	\$175
	CG4	Estimates	1	\$50
<i>Total</i>			<i>2</i>	<i>\$225</i>
<i>Jordan Valley</i>	<i>CG #</i>	<i>Description</i>	<i>1st Qtr</i>	<i>Paid</i>
	CG2	Appointments	1	\$50
	CG3	Switching on Power	2	\$125
	CG4	Estimates	4	\$200
	CG5	Respond to Billing Inquiries	2	\$100
	CG7	Notification of Planned	3	\$150
<i>Total</i>			<i>12</i>	<i>\$625</i>
<i>Laketown</i>	<i>CG #</i>	<i>Description</i>	<i>1st Qtr</i>	<i>Paid</i>
	CG4	Estimates	1	\$50
<i>Total</i>			<i>1</i>	<i>\$50</i>
<i>Layton</i>	<i>CG #</i>	<i>Description</i>	<i>1st Qtr</i>	<i>Paid</i>
	CG3	Switching on Power	2	\$175
	CG5	Respond to Billing Inquiries	1	\$50
<i>Total</i>			<i>3</i>	<i>\$225</i>
<i>Park City</i>	<i>CG #</i>	<i>Description</i>	<i>1st Qtr</i>	<i>Paid</i>
	CG4	Estimates	1	\$50
<i>Total</i>			<i>1</i>	<i>\$50</i>
<i>Price</i>	<i>CG #</i>	<i>Description</i>	<i>1st Qtr</i>	<i>Paid</i>
	CG4	Estimates	1	\$50
<i>Total</i>			<i>1</i>	<i>\$50</i>

UTAH FAILURES April-June 2001

<i>Richfield</i>	<i>CG #</i>	<i>Description</i>	<i>1st Qtr</i>	<i>Paid</i>
	CG4	Estimates	1	\$50
<i>Total</i>			1	\$50
<i>Santaquin</i>	<i>CG #</i>	<i>Description</i>	<i>1st Qtr</i>	<i>Paid</i>
	CG4	Estimates	1	\$50
<i>Total</i>			1	\$50
<i>SLC Metro</i>	<i>CG #</i>	<i>Description</i>	<i>1st Qtr</i>	<i>Paid</i>
	CG2	Appointments	1	\$50
	CG3	Switching on Power	7	\$825
	CG4	Estimates	1	\$50
	CG5	Respond to Billing Inquiries	1	\$50
	CG7	Notification of Planned	7	\$350
<i>Total</i>			17	\$1,325
<i>Tooele</i>	<i>CG #</i>	<i>Description</i>	<i>1st Qtr</i>	<i>Paid</i>
	CG2	Appointments	1	\$50
	CG4	Estimates	1	\$50
<i>Total</i>			2	\$100
<i>Tremonton</i>	<i>CG #</i>	<i>Description</i>	<i>1st Qtr</i>	<i>Paid</i>
	CG4	Estimates	3	\$150
<i>Total</i>			3	\$150
<i>Vernal</i>	<i>CG #</i>	<i>Description</i>	<i>1st Qtr</i>	<i>Paid</i>
	CG7	Notification of Planned	1	\$100
<i>Total</i>			1	\$100
State Total			60	\$3,750

UTAH RESIDENTIAL/SMALL COMMERCIAL METER SETS - REPORT BY DISTRICT

FISCAL YEAR TO DATE - 1ST QUARTER 2002

NORTHERN UTAH

LOCATION	April 2001			May 2001			June 2001			FYD - 1st Quarter			Notes
	Within 5 Days	%	Total	Within 5 Days	%	Total	Within 5 Days	%	Total	Total Within 5 Days	1st Quarter %	Total	
Jordan Valley	338	97%	347	446	99%	450	320	98%	327	1104	98%	1124	
Layton/Davis	159	98%	163	86	100%	86	131	91%	144	376	96%	393	
Metro	279	99%	283	253	100%	254	237	99%	240	769	99%	777	
Ogden	117	100%	117	118	99%	119	137	100%	137	372	100%	373	
Park City	30	97%	31	48	98%	49	68	94%	72	146	96%	152	
Smithfield	32	97%	33	39	100%	39	28	100%	28	99	99%	100	
Tooele	41	100%	41	61	98%	62	46	96%	48	148	98%	151	
Tremonton	6	100%	6	13	100%	13	17	100%	17	36	100%	36	
TOTAL	1002	98%	1021	1064	99%	1072	984	97%	1013	3050	98%	3106	

SOUTHERN UTAH

LOCATION	April 2001			May 2001			June 2001			FYD - 1st Quarter			Notes
	Within 5 days	%	Total	Within 5 days	%	Total	Within 5 days	%	Total	Total Within 5 Days	1st Quarter %	Total	
American Fork	114	99%	115	163	100%	163	153	100%	153	430	100%	431	
Cedar City	44	98%	45	60	100%	60	38	100%	38	142	99%	143	
Moab	17	100%	17	14	100%	14	22	100%	22	53	100%	53	
Price	7	78%	9	9	100%	9	14	100%	14	30	94%	32	Customers partly responsible for April delay
Richfield	45	100%	45	26	100%	26	32	100%	32	103	100%	103	
Santaquin	17	100%	17	27	100%	27	18	100%	18	62	100%	62	
Vernal	14	100%	14	16	100%	16	11	100%	11	41	100%	41	
TOTAL	258	98%	262	315	100%	315	288	100%	288	861	100%	865	

TOTAL UTAH

LOCATION	APRIL			MAY			JUNE			FYD - 1st Quarter			Notes
	Within 5 days	%	Total	Within 5 days	%	Total	Within 5 days	%	Total	Total Within 5 Days	1st Quarter %	Total	
TOTAL UTAH	1260	98%	1283	1379	99%	1387	1272	98%	1301	3911	98%	3971	

UTAH TEMPORARY METER SETS - REPORT BY DISTRICT

**FISCAL YEAR TO DATE - 1st QUARTER 2002
NORTHERN UTAH**

LOCATION	April 2001			May 2001			June 2001			FYD - 1st Quarter			Notes
	Within 10 Days	%	Total	Within 10 Days	%	Total	Within 10 Days	%	Total	Total Within 10 Days	1st Quarter %	Total	
Jordan Valley	167	97%	172	224	100%	225	210	100%	211	601	99%	608	
Layton/Davis	81	94%	86	85	97%	88	129	100%	129	295	97%	303	
Metro	82	100%	82	62	100%	62	92	100%	92	236	100%	236	
Ogden	119	100%	119	149	100%	149	112	100%	112	342	90%	380	
Park City	22	100%	22	39	100%	39	35	100%	35	96	100%	96	
Smithfield	36	100%	36	28	100%	28	18	100%	18	82	100%	82	
Tooele	35	100%	35	36	100%	36	39	100%	39	110	100%	110	
Tremonton	11	100%	11	9	100%	9	4	100%	4	24	100%	24	
TOTAL	553	98%	563	632	99%	636	639	100%	640	1824	99%	1839	

SOUTHERN UTAH

LOCATION	April 2001			May 2001			June 2001			FYD - 1st Quarter			Notes
	Within 10 days	%	Total	Within 10 days	%	Total	Within 10 days	%	Total	Total Within 10 Days	1st Quarter %	Total	
American Fork	105	99%	106	124	100%	124	113	100%	113	342	100%	343	
Cedar City	36	100%	36	43	100%	43	25	100%	25	104	100%	104	
Moab	0		0	1	100%	1	1	100%	1	2	100%	2	
Price	1	100%	1	3	100%	3	1	100%	1	5	100%	5	
Richfield	6	100%	6	5	100%	5	6	100%	6	17	100%	17	
Santaquin	14	100%	14	11	100%	11	15	100%	15	40	100%	40	
Vernal	2	100%	2	4	100%	4	1	100%	1	7	100%	7	
TOTAL	164	99%	165	191	100%	191	162	100%	162	517	100%	518	

TOTAL UTAH

LOCATION	APRIL			MAY			JUNE			FYD - 1st Quarter			Notes
	Within 10 days	%	Total	Within 10 days	%	Total	Within 10 days	%	Total	Total Within 10 Days	1st Quarter %	Total	
TOTAL UTAH	717	98%	728	823	100%	827	801	100%	802	2341	99%	2357	

Customer Service Commitments

UTAH CONNECTS/RECONNECTS

April-June 2001

CG3 Events by District

DISTRICT	1st Quarter
<i>American Fork</i>	761
<i>Cedar City</i>	248
<i>Jordan Valley</i>	1572
<i>Laketown</i>	34
<i>Layton</i>	478
<i>Moab</i>	106
<i>Ogden</i>	1365
<i>Park City</i>	120
<i>Price</i>	93
<i>Richfield</i>	132
<i>SLC Metro</i>	3242
<i>Smithfield</i>	160
<i>Tooele</i>	256
<i>Tremonton</i>	116
<i>Vernal</i>	66

All Districts **8749**

Customer Service Commitments

UTAH GUARANTEE FIELD RESPONSE PERFORMANCE

April - June 2001

<i>American Fork</i>	<i>Description</i>	# Guaranteed Customer Requests	Average # Days to Respond
CG4a	Estimates - Contact within 2 days	101	1
CG4b	Estimates - 5 days	13	0
CG4c	Estimates - 15 days	81	13
CG5	Responding to Bill Inquiries within 10 days	100	5
CG6	Responding to Meter Problems within 15 days	11	10

<i>Cedar City</i>	<i>Description</i>	# Guaranteed Customer Requests	Average # Days to Respond
CG4a	Estimates - Contact within 2 days	132	1
CG4b	Estimates - 5 days	66	0
CG4c	Estimates - 15 days	69	4
CG5	Responding to Bill Inquiries within 10 days	77	5
CG6	Responding to Meter Problems within 15 days	7	4

<i>Jordan Valley</i>	<i>Description</i>	# Guaranteed Customer Requests	Average # Days to Respond
CG4a	Estimates - Contact within 2 days	171	1
CG4b	Estimates - 5 days	75	1
CG4c	Estimates - 15 days	93	9
CG5	Responding to Bill Inquiries within 10 days	408	5
CG6	Responding to Meter Problems within 15 days	17	6

UTAH GUARANTEE FIELD RESPONSE PERFORMANCE

April - June 2001

<i>Laketown</i>	<i>Description</i>	# Guaranteed Customer Requests	Average # Days to Respond
	CG4a Estimates - Contact within 2 days	14	1
	CG4b Estimates - 5 days	1	0
	CG4c Estimates - 15 days	8	1
	CG5 Responding to Bill Inquiries within 10 days	15	4
	CG6 Responding to Meter Problems within 15 days	1	12

<i>Layton</i>	<i>Description</i>	# Guaranteed Customer Requests	Average # Days to Respond
	CG4a Estimates - Contact within 2 days	41	1
	CG4b Estimates - 5 days	16	0
	CG4c Estimates - 15 days	25	8
	CG5 Responding to Bill Inquiries within 10 days	97	5
	CG6 Responding to Meter Problems within 15 days	9	7

<i>Moab</i>	<i>Description</i>	# Guaranteed Customer Requests	Average # Days to Respond
	CG4a Estimates - Contact within 2 days	33	5*
	CG4b Estimates - 5 days	12	1
	CG4c Estimates - 15 days	18	7
	CG5 Responding to Bill Inquiries within 10 days	30	3
	CG6 Responding to Meter Problems within 15 days	2	6

*One request in Moab with a response of 61 days resulted when, after repeated attempts by Utah Power to make contact, the customer finally called back more than 2 months later. Another request took 58 days until response due to a mishandled request, resulting in a failure payment.

<i>Richfield</i>	<i>Description</i>	# Guaranteed Customer Requests	Average # Days to Respond
	CG4a Estimates - Contact within 2 days	78	2
	CG4b Estimates - 5 days	21	1
	CG4c Estimates - 15 days	49	6
	CG5 Responding to Bill Inquiries within 10 days	33	5
	CG6 Responding to Meter Problems within 15 days	5	10

<i>SLC Metro</i>	<i>Description</i>	# Guaranteed Customer Requests	Average # Days to Respond
	CG4a Estimates - Contact within 2 days	133	1
	CG4b Estimates - 5 days	33	1
	CG4c Estimates - 15 days	75	7
	CG5 Responding to Bill Inquiries within 10 days	654	5
	CG6 Responding to Meter Problems within 15 days	21	6

<i>Smithfield</i>	<i>Description</i>	# Guaranteed Customer Requests	Average # Days to Respond
	CG4a Estimates - Contact within 2 days	63	1
	CG4b Estimates - 5 days	7	0
	CG4c Estimates - 15 days	43	3
	CG5 Responding to Bill Inquiries within 10 days	32	4

Customer Service Commitments

UTAH OUTAGE RESTORATION PERFORMANCE

April-June 2001

District	# Customers Interrupted > 5 minutes	% Restored Within 3 Hours
American Fork	29,152	91%
Cedar City	8,156	91%
Jordan Valley	117,073	91%
Layton	37,319	95%
Moab	1,300	71% ¹
Ogden	50,103	82%
Park City	10,579	73% ²
Price	7,796	89%
Richfield	6,062	80%
SLC Metro	66,186	89%
Smithfield	23,165	93%
Tooele	17,698	70% ³
Tremonton	2,683	66% ⁴
Vernal	6,418	74% ¹
All Districts	383,690	88%

Notes:

1. Performance was affected in Moab, Park City and Vernal due to large coverage areas, difficult terrain and the nature of the outages requiring pole replacements.
2. Further investigation of Park City outages identified data entry errors in a closed system which, had the errors not been made, would have resulted in a performance level better than 80%.
3. Performance in Tooele was impacted by 3 extended outages caused by animals in the substation, multi-pole damage due to fire, and malfunctioning substation equipment.
4. Performance in Tremonton was affected by a single outage involving the failure of special equipment.

Customer Service Commitments

UTAH-Non-Guarantee

April - June 2001

FIELD RESPONSE PERFORMANCE

DISTRICT	Count of Field Requests	Average # Days to Respond
<i>American Fork</i>	81	2
<i>Cedar City</i>	129	5
<i>Jordan Valley</i>	353	7
<i>Laketown</i>	3	1
<i>Layton</i>	308	2
<i>Moab</i>	20	21
<i>Ogden</i>	340	9
<i>Park City</i>	34	5
<i>Price</i>	18	5
<i>Richfield</i>	27	5
<i>SLC Metro</i>	369	11
<i>Smithfield</i>	55	9
<i>Tooele</i>	66	14
<i>Tremonton</i>	23	6
<i>Valley West</i>	4	3
<i>Vernal</i>	9	6

Utah - Total Requests

1839

Customer Service Commitments

UTAH Non-Guarantee

April - June 2001

Tree Trimming

DISTRICT	Count of Tree Trim Requests
<i>American Fork</i>	91
<i>Cedar City</i>	11
<i>Davis (Layton)</i>	57
<i>Jordan Valley</i>	370
<i>Moab</i>	9
<i>Ogden</i>	195
<i>Park City</i>	11
<i>Price</i>	40
<i>Richfield</i>	26
<i>SLC Metro</i>	689
<i>Smithfield</i>	20
<i>Tooele</i>	27
<i>Tremonton</i>	9
<i>Vernal</i>	17
All Districts	1,572
