

Saratoga Springs, Utah
Natural Gas Explosion
February 06, 2007

Appendix # 1

Site Plans



Truck

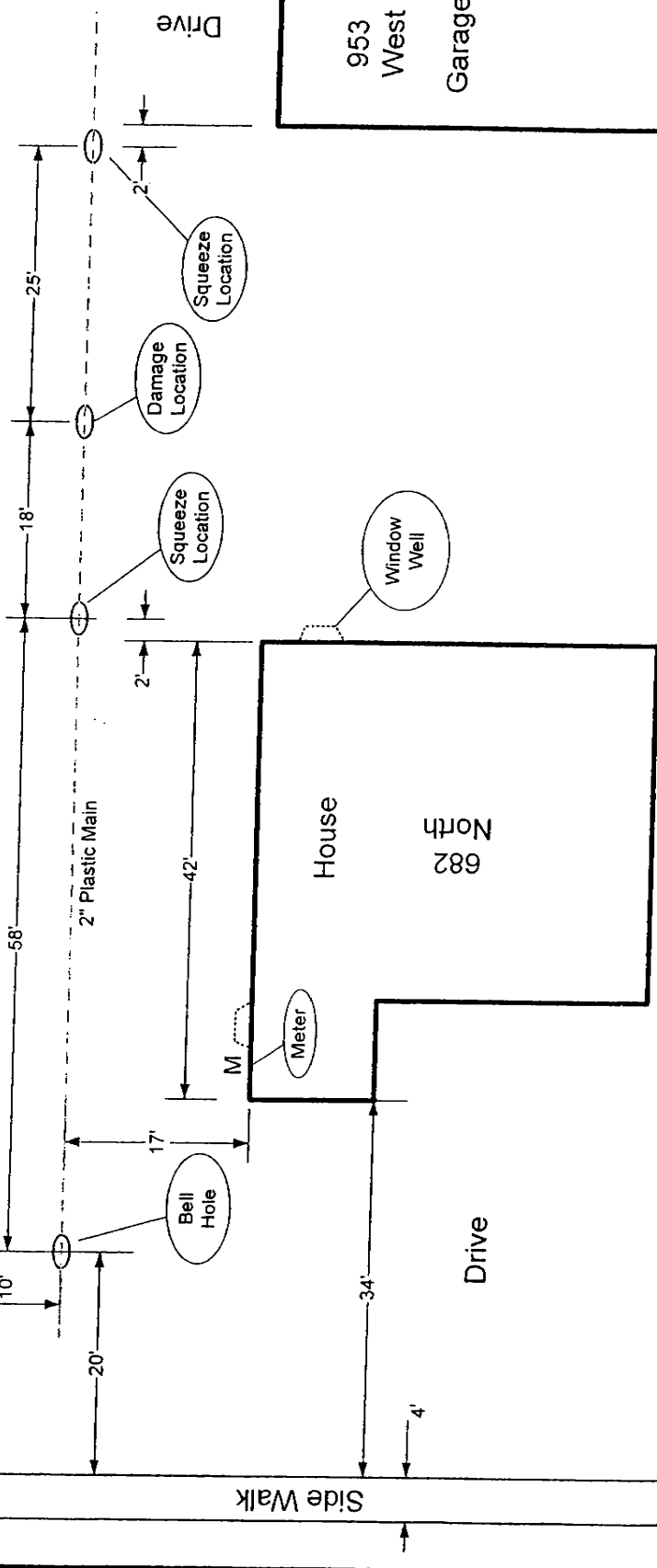
Prairie Dog Way
700 North

Trailer Crew Truck

Side Walk

Truck

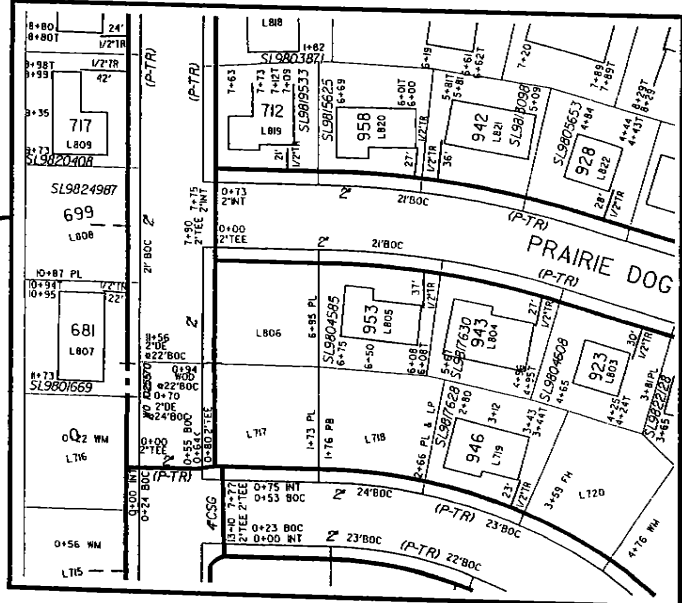
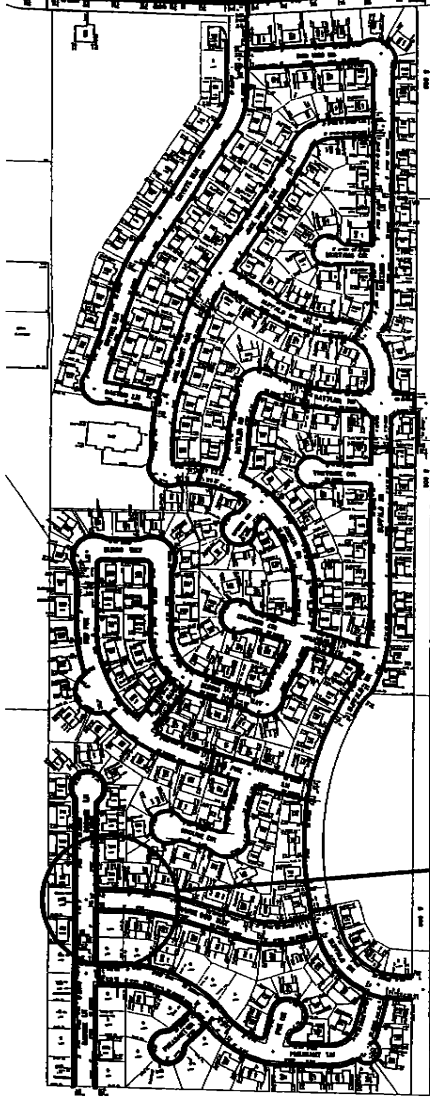
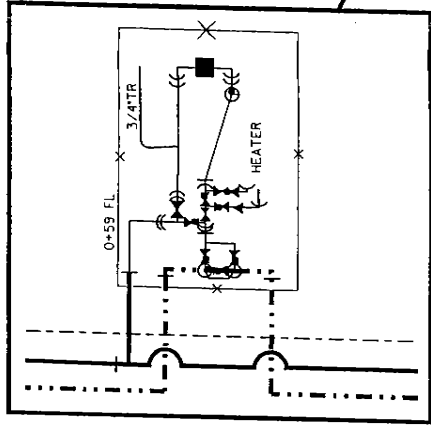
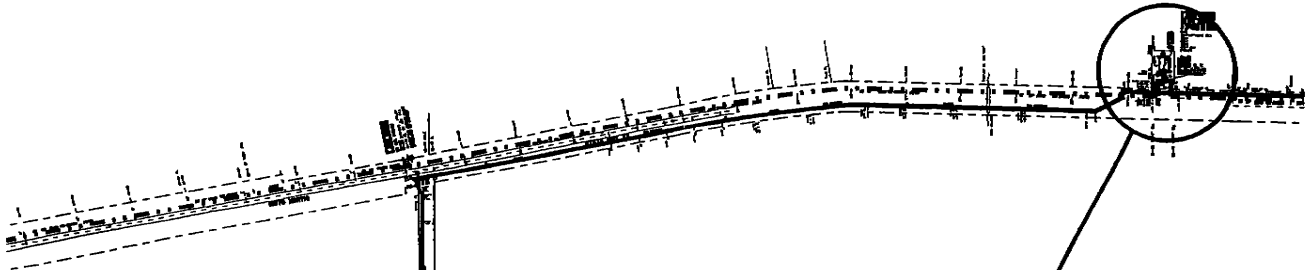
Badger Lane
980 West



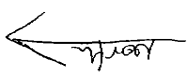
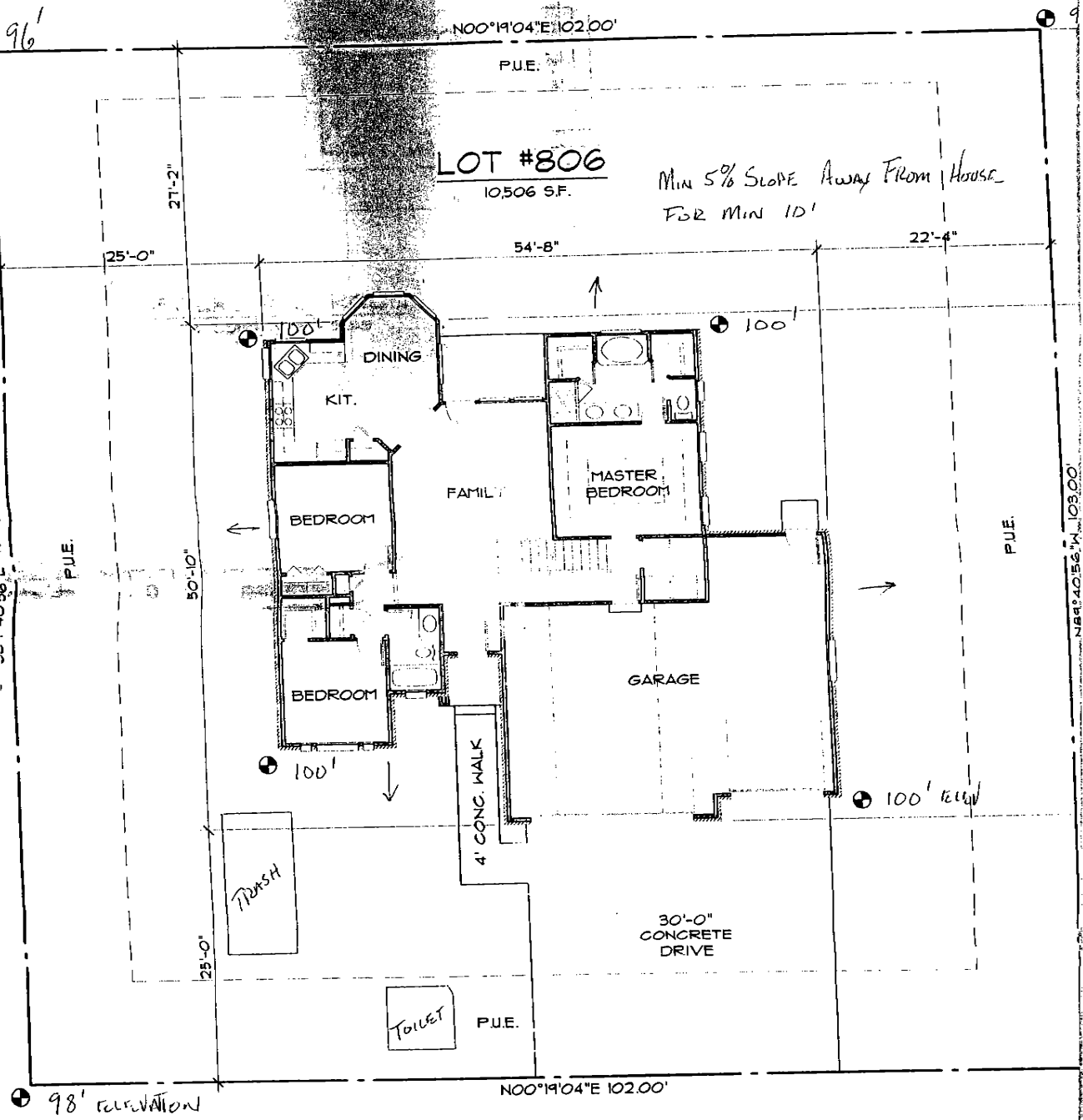
NOTE:

Depth of Cover at point of Damage:
38" (approximately)

- * Measurements are approximate.
- * Locations of vehicles/ individuals are approximations.



THIS SITE TO BEAR EVERY BURDEN ASSUMED BY HOUSE OR BUILDER AS WELL AS EASEMENTS



BADGER LANE