

Saratoga Springs, Utah
Natural Gas Explosion
February 06, 2007

Appendix # 5

Odorization and Chromatograph Data

50% Tert-butylmercaptan (TBM)
50% Tetrahydrothiophene (THT)

Odorant Test Site

Person Responsible
 System
 Active
 Type

Location
 State
 County
 City
 Address
 Description

Gps
 Deg
 Latitude - N
 Longitude - W
 Elevation (ft)

* Percent natural gas in air that is readily detectable by a person with a normal sense of smell.

Date	Value*	Person	Equipment
2/6/2007	0.58	Hovey, Verl	23
1/5/2007	0.65	Hovey, Verl	23
12/4/2006	0.55	Hovey, Verl	23
11/9/2006	0.56	Hovey, Verl	23
10/16/2006	0.7	Hovey, Verl	23
9/28/2006	0.73	Hovey, Verl	23
8/2/2006	0.66	Hovey, Verl	23
7/5/2006	0.71	Hovey, Verl	23
6/6/2006	0.55	Hovey, Verl	23
5/10/2006	0.63	Hovey, Verl	23
4/4/2006	0.7	Hovey, Verl	23
3/8/2006	0.61	Hovey, Verl	23
2/7/2006	0.64	Hovey, Verl	23
1/9/2006	0.59	Hovey, Verl	23
12/19/2005	0.38	Hovey, Verl	23
11/4/2005	0.53	Hovey, Verl	23
10/5/2005	0.34	Hovey, Verl	23
9/8/2005	0.45	Hovey, Verl	23
8/5/2005	0.25	Hovey, Verl	23
7/11/2005	0.56	Hovey, Verl	23
6/13/2005	0.37	Hovey, Verl	23
5/12/2005	0.43	Hovey, Verl	23
4/7/2005	0.49	Hovey, Verl	23
3/9/2005	0.49	Hovey, Verl	23
2/8/2005	0.22	Hovey, Verl	23
1/5/2005	0.2	Hovey, Verl	23
12/13/2004	0.28	Hovey, Verl	23
11/4/2004	0.21	Hovey, Verl	23

10/11/2004	0.18	Hovey, Verl	23
8/9/2004	0.25	Hovey, Verl	23
7/8/2004	0.37	Hovey, Verl	23
6/11/2004	0.17	Hovey, Verl	23
5/3/2004	0.15	Hovey, Verl	23
4/6/2004	0.11	Hovey, Verl	23
3/4/2004	0.32	Hovey, Verl	23
2/4/2004	0.19	Hovey, Verl	23
1/7/2004	0.22	Hovey, Verl	23
11/13/2003	0.11	Hovey, Verl	23
9/3/2003	0.34	Hovey, Verl	23
8/13/2003	0.22	Hovey, Verl	23
7/23/2003	0.31	Hovey, Verl	23
6/12/2003	0.31	Hovey, Verl	23

Odorant Test Site

Person Responsible	Loveless, Jeff
System	Utah County
Active	True
Type	Baseline

Location

State	Utah
County	Utah
City	American Fork
Address	300 N 100 E
Description	-

Gps

	Deg
Latitude - N	40.38382
Longitude - W	111.79556
Elevation (ft)	4601

* Percent natural gas in air that is readily detectable by a person with a normal sense of smell.

Date	Value*	Person	Equipment
2/7/2007	0.66	Hovey, Verl	23
1/5/2007	0.63	Hovey, Verl	23
12/5/2006	0.6	Hovey, Verl	23
11/9/2006	0.63	Hovey, Verl	23
10/16/2006	0.55	Hovey, Verl	23
9/9/2006	0.5	Hovey, Verl	23
8/3/2006	0.59	Hovey, Verl	23
7/5/2006	0.65	Hovey, Verl	23
6/8/2006	0.68	Hovey, Verl	23
5/11/2006	0.57	Hovey, Verl	23
4/4/2006	0.68	Hovey, Verl	23
3/8/2006	0.54	Hovey, Verl	23
2/7/2006	0.69	Hovey, Verl	23
1/9/2006	0.47	Hovey, Verl	23
12/15/2005	0.66	Hovey, Verl	23
11/4/2005	0.49	Hovey, Verl	23
10/11/2005	0.24	Hovey, Verl	23
9/8/2005	0.45	Hovey, Verl	23
8/5/2005	0.58	Hovey, Verl	23
7/8/2005	0.61	Hovey, Verl	23
6/14/2005	0.46	Hovey, Verl	23
5/13/2005	0.72	Hovey, Verl	23
4/7/2005	0.35	Hovey, Verl	23
3/8/2005	0.28	Hovey, Verl	23
2/10/2005	0.22	Hovey, Verl	23
1/5/2005	0.31	Hovey, Verl	23
12/13/2004	0.31	Hovey, Verl	23
11/8/2004	0.23	Hovey, Verl	23

10/11/2004	0.23	Hovey, Verl	23
9/10/2004	0.12	Hovey, Verl	23
8/9/2004	0.26	Hovey, Verl	23
7/8/2004	0.31	Hovey, Verl	23
6/14/2004	0.33	Hovey, Verl	23
5/4/2004	0.27	Hovey, Verl	23
3/4/2004	0.39	Hovey, Verl	23
1/8/2004	0.27	Hovey, Verl	23
9/5/2003	0.37	Hovey, Verl	23
8/13/2003	0.37	Hovey, Verl	23
6/12/2003	0.28	Hovey, Verl	23

Odorant Test Site

Person Responsible
 System
 Active
 Type

Location
 State
 County
 City
 Address
 Description

Gps
 Deg
 Latitude - N
 Longitude - W
 Elevation (ft)

* Percent natural gas in air that is readily detectable by a person with a normal sense of smell.

Date	Value*	Person	Equipment
2/7/2007	0.32	Hovey, Verl	23
1/5/2007	0.58	Hovey, Verl	23
12/5/2006	0.44	Hovey, Verl	23
11/9/2006	0.6	Hovey, Verl	23
10/16/2006	0.6	Hovey, Verl	23
9/29/2006	0.56	Hovey, Verl	23
8/2/2006	0.63	Hovey, Verl	23
7/6/2006	0.68	Hovey, Verl	23
6/8/2006	0.81	Hovey, Verl	23
5/11/2006	0.6	Hovey, Verl	23
4/5/2006	0.58	Hovey, Verl	23
3/8/2006	0.67	Hovey, Verl	23
2/7/2006	0.63	Hovey, Verl	23
1/9/2006	0.58	Hovey, Verl	23
12/15/2005	0.53	Hovey, Verl	23
11/3/2005	0.35	Hovey, Verl	23
10/11/2005	0.46	Hovey, Verl	23
9/8/2005	0.46	Hovey, Verl	23
8/5/2005	0.57	Hovey, Verl	23
7/11/2005	0.7	Hovey, Verl	23
6/14/2005	0.38	Hovey, Verl	23
5/13/2005	0.62	Hovey, Verl	23
4/7/2005	0.34	Hovey, Verl	23
3/8/2005	0.41	Hovey, Verl	23
1/5/2005	0.28	Hovey, Verl	23
12/13/2004	0.35	Hovey, Verl	23
11/8/2004	0.21	Hovey, Verl	23
10/11/2004	0.18	Hovey, Verl	23

8/9/2004	0.2	Hovey, Verl	23
7/8/2004	0.32	Hovey, Verl	23
6/14/2004	0.18	Hovey, Verl	23
5/4/2004	0.3	Hovey, Verl	23
4/6/2004	0.29	Hovey, Verl	23
3/4/2004	0.39	Hovey, Verl	23
2/4/2004	0.14	Hovey, Verl	23
1/8/2004	0.3	Hovey, Verl	23
11/13/2003	0.21	Hovey, Verl	23
9/5/2003	0.31	Hovey, Verl	23
8/14/2003	0.14	Hovey, Verl	23
7/23/2003	0.4	Hovey, Verl	23
6/12/2003	0.29	Hovey, Verl	23
1/1/1950	0.22	Hovey, Verl	23

Odorant Test Site

Person Responsible
 System
 Active
 Type

Location
 State
 County
 City
 Address
 Description

Gps
 Deg
 Latitude - N
 Longitude - W
 Elevation (ft)

* Percent natural gas in air that is readily detectable by a person with a normal sense of smell.

Date	Value*	Person	Equipment
2/6/2007	0.63	Hovey, Verl	23
1/5/2007	0.58	Hovey, Verl	23
12/4/2006	0.77	Hovey, Verl	23
11/9/2006	0.59	Hovey, Verl	23
10/17/2006	0.6	Hovey, Verl	23
9/29/2006	0.63	Hovey, Verl	23
8/3/2006	0.6	Hovey, Verl	23
7/5/2006	0.63	Hovey, Verl	23
6/7/2006	0.59	Hovey, Verl	23
5/10/2006	0.7	Hovey, Verl	23
4/5/2006	0.55	Hovey, Verl	23
3/8/2006	0.59	Hovey, Verl	23
2/7/2006	0.74	Hovey, Verl	23
1/9/2006	0.71	Hovey, Verl	23
12/13/2005	0.3	Hovey, Verl	23
11/3/2005	0.44	Hovey, Verl	23
10/11/2005	0.55	Hovey, Verl	23
9/8/2005	0.47	Hovey, Verl	23
8/5/2005	0.41	Hovey, Verl	23
7/11/2005	0.71	Hovey, Verl	23
6/13/2005	0.34	Hovey, Verl	23
5/12/2005	0.47	Hovey, Verl	23
4/7/2005	0.54	Hovey, Verl	23
3/8/2005	0.43	Hovey, Verl	23
2/8/2005	0.23	Hovey, Verl	23
1/5/2005	0.25	Hovey, Verl	23
12/13/2004	0.53	Hovey, Verl	23
11/4/2004	0.41	Hovey, Verl	23

10/11/2004	0.24	Hovey, Verl	23
8/9/2004	0.22	Hovey, Verl	23
6/11/2004	0.25	Hovey, Verl	23
5/3/2004	0.27	Hovey, Verl	23
4/6/2004	0.38	Hovey, Verl	23
3/4/2004	0.48	Hovey, Verl	23
2/4/2004	0.33	Hovey, Verl	23
1/8/2004	0.18	Hovey, Verl	23
11/13/2003	0.2	Hovey, Verl	23
9/3/2003	0.35	Hovey, Verl	23
8/13/2003	0.3	Hovey, Verl	23
7/22/2003	0.19	Hovey, Verl	23
6/12/2003	0.3	Hovey, Verl	23

Odorant Test Site

Person Responsible	Loveless, Jeff
System	Utah County
Active	True
Type	Baseline

Location	
State	Utah
County	Utah
City	Highland
Address	1100 N 6400 W
Description	Highland Church

Gps	
	Deg
Latitude - N	40.43106
Longitude - W	111.81072
Elevation (ft)	4853

* Percent natural gas in air that is readily detectable by a person with a normal sense of smell.

Date	Value*	Person	Equipment
2/6/2007	0.7	Hovey, Verl	23
1/5/2007	0.6	Hovey, Verl	23
12/1/2006	0.55	Hovey, Verl	23
11/9/2006	0.52	Hovey, Verl	23
10/16/2006	0.48	Hovey, Verl	23
9/28/2006	0.5	Hovey, Verl	23
8/2/2006	0.57	Hovey, Verl	23
7/6/2006	0.57	Hovey, Verl	23
6/6/2006	0.53	Hovey, Verl	23
5/10/2006	0.57	Hovey, Verl	23
4/4/2006	0.6	Hovey, Verl	23
3/8/2006	0.58	Hovey, Verl	23
2/7/2006	0.64	Hovey, Verl	23
1/9/2006	0.63	Hovey, Verl	23
12/14/2005	0.48	Hovey, Verl	23
11/3/2005	0.5	Hovey, Verl	23
10/5/2005	0.43	Hovey, Verl	23
9/8/2005	0.41	Hovey, Verl	23
8/5/2005	0.57	Hovey, Verl	23
7/11/2005	0.42	Hovey, Verl	23
6/13/2005	0.47	Hovey, Verl	23
5/12/2005	0.42	Hovey, Verl	23
4/7/2005	0.48	Hovey, Verl	23
3/10/2005	0.37	Hovey, Verl	23
2/8/2005	0.17	Hovey, Verl	23
1/5/2005	0.25	Hovey, Verl	23
12/13/2004	0.17	Hovey, Verl	23
11/4/2004	0.25	Hovey, Verl	23

10/11/2004	0.24	Hovey, Verl	23
8/9/2004	0.19	Hovey, Verl	23
7/8/2004	0.22	Hovey, Verl	23
6/11/2004	0.28	Hovey, Verl	23
5/3/2004	0.21	Hovey, Verl	23
4/6/2004	0.29	Hovey, Verl	23
3/4/2004	0.25	Hovey, Verl	23
2/4/2004	0.31	Hovey, Verl	23
1/7/2004	0.13	Hovey, Verl	23
11/13/2003	0.09	Hovey, Verl	23
9/3/2003	0.32	Hovey, Verl	23
8/13/2003	0.19	Hovey, Verl	23
7/23/2003	0.27	Hovey, Verl	23
6/12/2003	0.25	Hovey, Verl	23

Odorant Test Site

Person Responsible	Loveless, Jeff
System	Utah County
Active	True
Type	Baseline

Location

State	Utah
County	Utah
City	Pleasant Grove
Address	190 E 500 S
Description	-

Gps

	Deg
Latitude - N	40.35802
Longitude - W	111.73731
Elevation (ft)	4817

* Percent natural gas in air that is readily detectable by a person with a normal sense of smell.

Date	Value*	Person	Equipment
2/6/2007	0.71	Hovey, Verl	23
1/4/2007	0.69	Hovey, Verl	23
12/4/2006	0.48	Hovey, Verl	23
11/8/2006	0.55	Hovey, Verl	23
10/17/2006	0.65	Hovey, Verl	23
9/29/2006	0.68	Hovey, Verl	23
8/2/2006	0.54	Hovey, Verl	23
7/3/2006	0.78	Hovey, Verl	23
6/6/2006	0.59	Hovey, Verl	23
5/10/2006	0.59	Hovey, Verl	23
4/4/2006	0.5	Hovey, Verl	23
3/8/2006	0.58	Hovey, Verl	23
2/6/2006	0.49	Hovey, Verl	23
1/6/2006	0.4	Hovey, Verl	23
12/14/2005	0.38	Hovey, Verl	23
11/3/2005	0.46	Hovey, Verl	23
10/5/2005	0.3	Hovey, Verl	23
9/7/2005	0.36	Hovey, Verl	23
8/4/2005	0.69	Hovey, Verl	23
7/11/2005	0.48	Hovey, Verl	23
6/13/2005	0.48	Hovey, Verl	23
5/12/2005	0.34	Hovey, Verl	23
4/7/2005	0.43	Hovey, Verl	23
3/9/2005	0.43	Hovey, Verl	23
2/8/2005	0.21	Hovey, Verl	23
1/5/2005	0.21	Hovey, Verl	23
12/10/2004	0.26	Hovey, Verl	23
11/4/2004	0.2	Hovey, Verl	23

10/11/2004	0.16	Hovey, Verl	23
9/9/2004	0.34	Hovey, Verl	23
8/9/2004	0.34	Hovey, Verl	23
7/8/2004	0.22	Hovey, Verl	23
6/14/2004	0.29	Hovey, Verl	23
5/3/2004	0.24	Hovey, Verl	23
4/6/2004	0.22	Hovey, Verl	23
3/2/2004	0.39	Hovey, Verl	23
2/4/2004	0.2	Hovey, Verl	23
1/7/2004	0.19	Hovey, Verl	23
10/17/2003	0.11	Hovey, Verl	23
9/3/2003	0.65	Hovey, Verl	23
8/13/2003	0.49	Hovey, Verl	23
6/12/2003	0.19	Hovey, Verl	23

Odorant Test Site

Person Responsible

System

Active

Type

Location

State

County

City

Address

Description

Gps

Deg

Latitude - N

Longitude - W

Elevation (ft)

* Percent natural gas in air that is readily detectable by a person with a normal sense of smell.

Date	Value*	Person	Equipment
12/11/2006	0.7	Hovey, Verl	23
9/9/2005	0.48	Hovey, Verl	23

Odorant Test Site

Person Responsible	Loveless, Jeff
System	Utah County
Active	True
Type	Random

Location

State	Utah
County	Utah
City	Alpine
Address	670 N 400 W
Description	Church

Gps

	Deg
Latitude - N	40.46206
Longitude - W	111.78572
Elevation (ft)	5163

* Percent natural gas in air that is readily detectable by a person with a normal sense of smell.

Date	Value*	Person	Equipment
9/8/2005	0.4	Hovey, Verl	23

Odorant Test Site

Person Responsible	Loveless, Jeff
System	Utah County
Active	True
Type	Random

Location	
State	Utah
County	Utah
City	American Fork
Address	585 S 100 W
Description	Church

Gps	
	Deg
Latitude - N	40.36507
Longitude - W	111.80194
Elevation (ft)	4567

* Percent natural gas in air that is readily detectable by a person with a normal sense of smell.

Date	Value*	Person	Equipment
1/5/2007	0.62	Hovey, Verl	23
12/11/2006	0.65	Hovey, Verl	23
7/11/2005	0.71	Hovey, Verl	23

Odorant Test Site

Person Responsible	Loveless, Jeff
System	Utah County
Active	True
Type	Random

Location

State	Utah
County	Utah
City	American Fork
Address	900 N 900 E
Description	Church

Gps

	Deg
Latitude - N	40.39473
Longitude - W	111.77268
Elevation (ft)	4784

* Percent natural gas in air that is readily detectable by a person with a normal sense of smell.

Date	Value*	Person	Equipment
8/3/2006	0.6	Hovey, Verl	23
4/7/2005	0.42	Hovey, Verl	23

Odorant Test Site

Person Responsible
 System
 Active
 Type

Location

State
 County
 City
 Address
 Description

Gps

Deg

Latitude - N
 Longitude - W
 Elevation (ft)

* Percent natural gas in air that is readily detectable by a person with a normal sense of smell.

Date	Value*	Person	Equipment
11/16/2006	0.63	Hovey, Verl	23
8/5/2005	0.5	Hovey, Verl	23

Odorant Test Site

Person Responsible

System

Active

Type

Location

State

County

City

Address

Description

Gps

Deg

Latitude - N

Longitude - W

Elevation (ft)

* Percent natural gas in air that is readily detectable by a person with a normal sense of smell.

Date	Value*	Person	Equipment
6/8/2006	0.39	Hovey, Verl	23
5/12/2005	0.45	Hovey, Verl	23

Odorant Test Site

Person Responsible	Loveless, Jeff
System	Utah County
Active	True
Type	Random

Location

State	Utah
County	Utah
City	Lehi
Address	4450 N 2220 W
Description	Church

Gps

	Deg
Latitude - N	40.44292
Longitude - W	111.88553
Elevation (ft)	4951

* Percent natural gas in air that is readily detectable by a person with a normal sense of smell.

Date	Value*	Person	Equipment
11/4/2005	0.48	Hovey, Verl	23

Odorant Test Site

Person Responsible	Loveless, Jeff
System	Utah County
Active	True
Type	Random

Location

State	Utah
County	Utah
City	Lehi
Address	3180 N 300 W

Description

Gps

	Deg
Latitude - N	40.42763
Longitude - W	111.85367
Elevation (ft)	4809

* Percent natural gas in air that is readily detectable by a person with a normal sense of smell.

Date	Value*	Person	Equipment
11/4/2005	0.43	Hovey, Verl	23

Odorant Test Site

Person Responsible

System

Active

Type

Location

State

County

City

Address

Description

Gps

Deg

Latitude - N

Longitude - W

Elevation (ft)

* Percent natural gas in air that is readily detectable by a person with a normal sense of smell.

Date	Value*	Person	Equipment
5/11/2006	0.5	Hovey, Verl	23

Odorant Test Site

Person Responsible	Loveless, Jeff
System	Utah County
Active	True
Type	Random

Location

State	Utah
County	Utah
City	Saratoga Springs
Address	49 E 1660 S
Description	Church

Gps

	Deg
Latitude - N	40.332
Longitude - W	111.90937
Elevation (ft)	4592

* Percent natural gas in air that is readily detectable by a person with a normal sense of smell.

Date	Value*	Person	Equipment
12/15/2005	0.71	Hovey, Verl	23

Odorant Test Site

Person Responsible
System
Active
Type

Location

State
County
City
Address
Description

Gps

Deg

Latitude - N
Longitude - W
Elevation (ft)

* Percent natural gas in air that is readily detectable by a person with a normal sense of smell.

Date	Value*	Person	Equipment
10/5/2005	0.36	Hovey, Verl	23

Odorant Test Site

Person Responsible

System

Active

Type

Location

State

County

City

Address

Description

Gps

Deg

Latitude - N

Longitude - W

Elevation (ft)

* Percent natural gas in air that is readily detectable by a person with a normal sense of smell.

Date	Value*	Person	Equipment
2/7/2006	0.69	Hovey, Verl	23

DTEX Test Log

Test #:	00001	SARATOGASPRINGS	User:	VERLHOVEY
Test Start Date:	02-07-07	1930N315W	Notes:	
Test Start Time:	13:23:59	<Blank>	DTEX Model:	DX1000G
TDL Result:	0.39%	SARATOGASPRINGS	Serial Number:	00161
RDL Result:	0.72%	UT <Blank>	Test Error Code:	**
Test Time (Sec):	104	Altitude (ft): 0	Test Temp (C):	20

Test #:	00002	SARATOGASPRINGS	User:	VERLHOVEY
Test Start Date:	02-07-07	8194COYOTECREEK	Notes:	
Test Start Time:	13:36:55	<Blank>	DTEX Model:	DX1000G
TDL Result:	0.42%	SARATOGASPRINGS	Serial Number:	00161
RDL Result:	0.76%	UT <Blank>	Test Error Code:	**
Test Time (Sec):	60	Altitude (ft): 0	Test Temp (C):	20

Test #:	00003	SARATOGASPRINGS	User:	VERLHOVEY
Test Start Date:	02-07-07	947N950W	Notes:	
Test Start Time:	13:44:49	<Blank>	DTEX Model:	DX1000G
TDL Result:	0.37%	SARATOGASPRINGS	Serial Number:	00161
RDL Result:	0.61%	UT <Blank>	Test Error Code:	**
Test Time (Sec):	62	Altitude (ft): 0	Test Temp (C):	20

Test #:	00004	SARATOGASPRINGS	User:	VERLHOVEY
Test Start Date:	02-07-07	1660SOMAIN	Notes:	
Test Start Time:	14:04:51	<Blank>	DTEX Model:	DX1000G
TDL Result:	0.44%	SARATOGASPRINGS	Serial Number:	00161
RDL Result:	0.66%	UT <Blank>	Test Error Code:	**
Test Time (Sec):	55	Altitude (ft): 0	Test Temp (C):	21

Test #:	00005	CEDARFORT	User:	VERLHOVEY
Test Start Date:	02-07-07	CENTERSTANDCHURCHST	Notes:	
Test Start Time:	14:28:20	<Blank>	DTEX Model:	DX1000G
TDL Result:	0.32%	CEDARFORT	Serial Number:	00161
RDL Result:	0.32%	UT <Blank>	Test Error Code:	**
Test Time (Sec):	60	Altitude (ft): 0	Test Temp (C):	20

Attachment 2

Odorant Policy

Questar Gas Company increased its odorization injection rate by 50% back in 1984, from 0.5 lb/MMscf to 0.75 lb/MMscf, to improve odorization effectiveness and compensate for potential odorant fade, including adsorption. The change also involved use of a new 50/50 blend of TBM and THT to attain greater odor impact. Questar Gas injects odorant for gas deliveries to the Wasatch Front at centralized points, namely, Coalville and other gate stations.

4-10-01

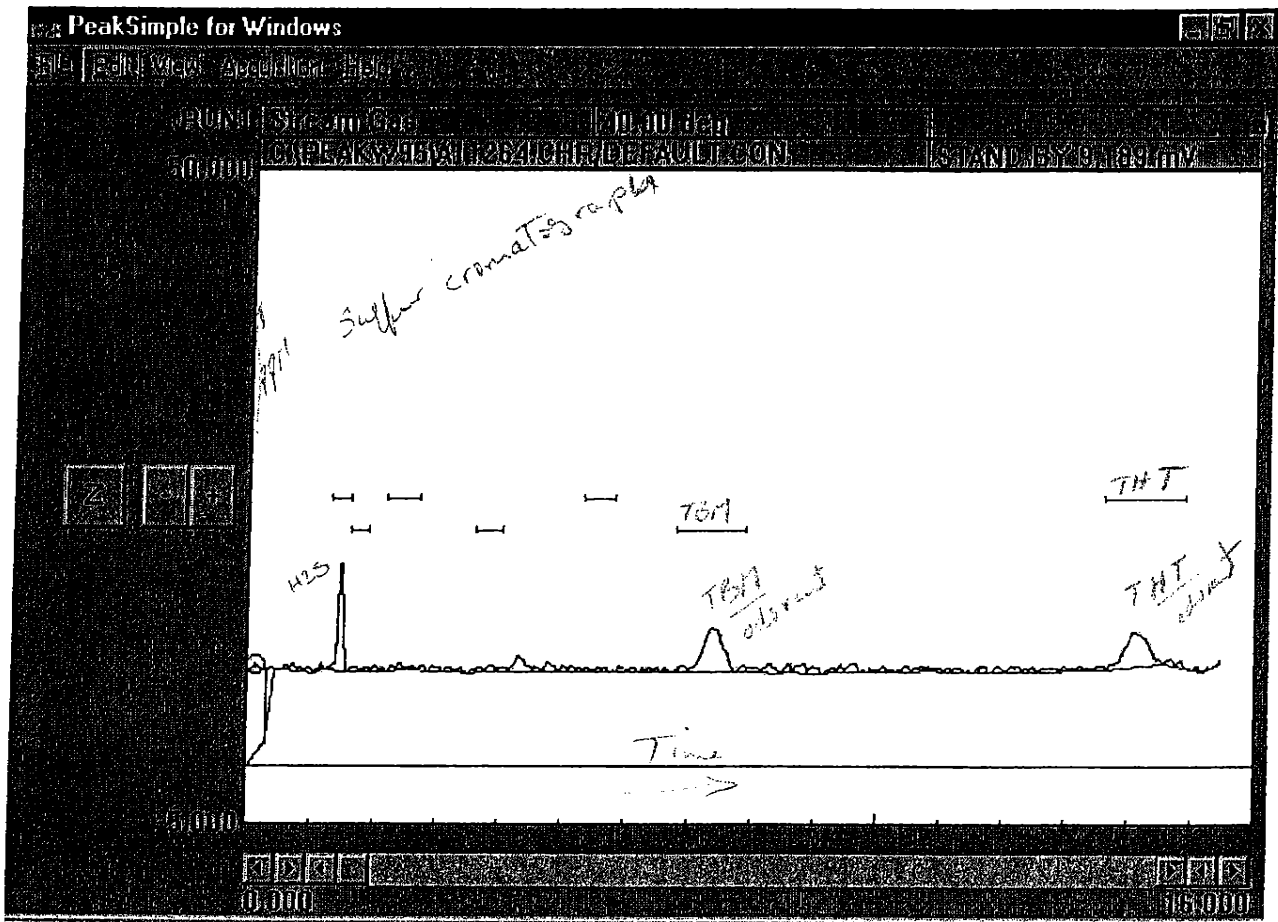
Attachment 6

Explanation of Sulfur Chromatograph Data

Questar uses an odorant blend that consists of two components; 50% tert-butyl mercaptan (TBM) and 50% tetrahydrothiophene (THT). The sulfur chromatograph is capable of detecting these two components as well as other sulfur based components that occur naturally in the gas such as hydrogen sulfide (H₂S).

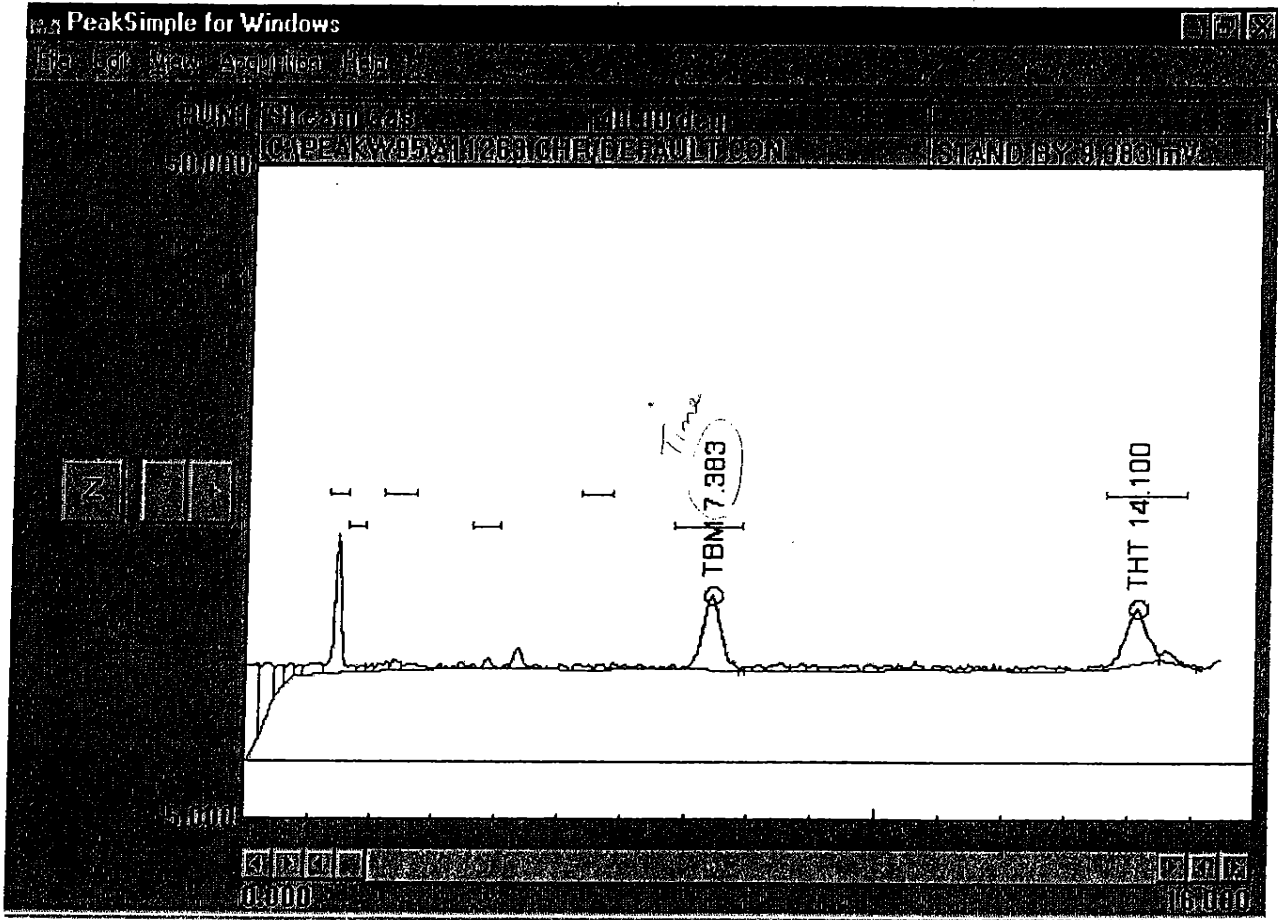
One of the outputs of a chromatograph analysis is a chromatogram. A chromatogram is a graphical representation of the sample. Each analysis on our chromatograph takes about 15.5 minutes (the x axis of the graph) and as the analysis progresses a "peak" registers on the graph each time a different component is detected. In this particular analysis there are three large peaks. The first peak to register is naturally occurring hydrogen sulfide, the next component peak is TBM and the last peak represents THT. The quantity of each of these components is calculated based on the area under it's peak. An algorithm integrates the area under the curve to calculate the quantity of that component. In this case the quantity is shown in ppm.

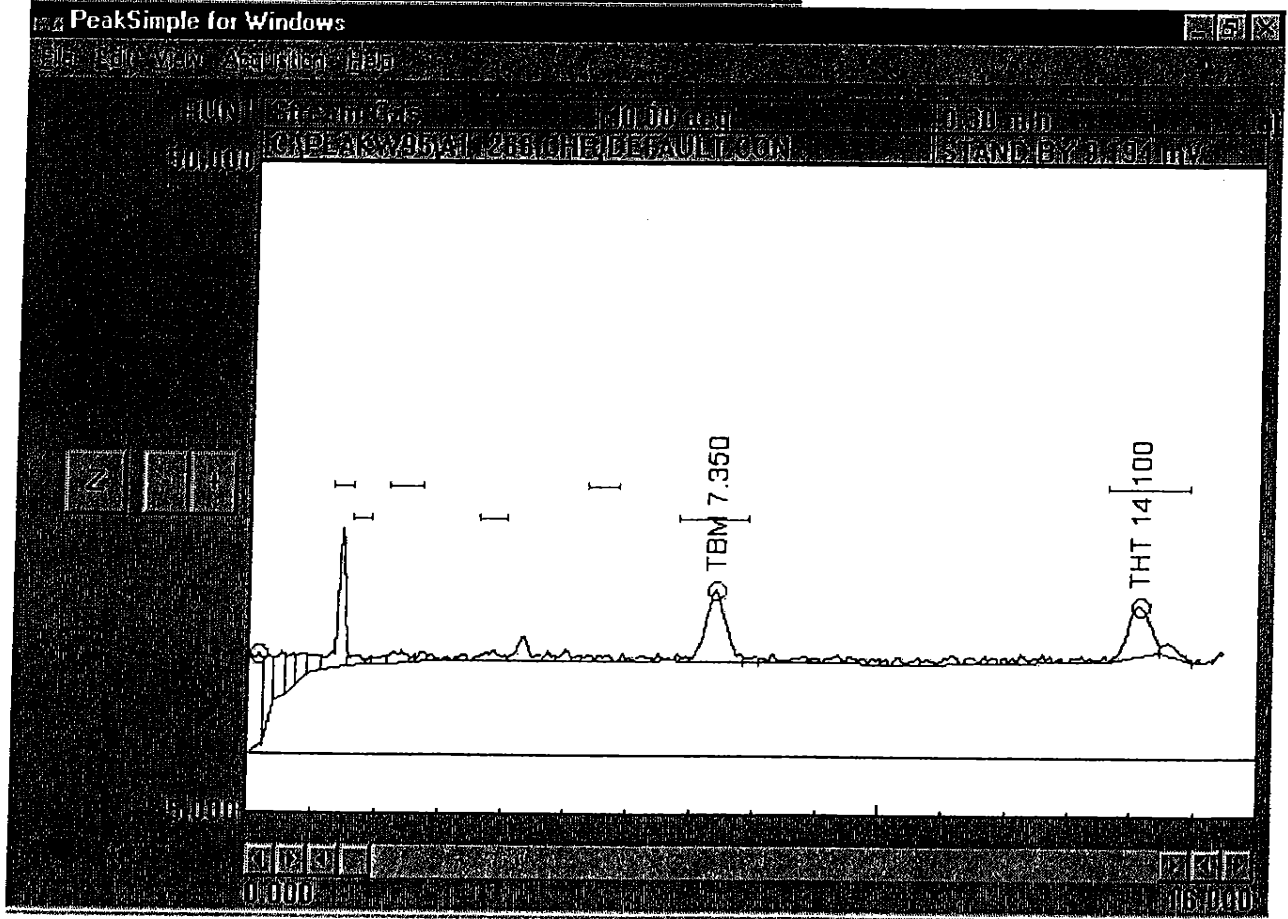
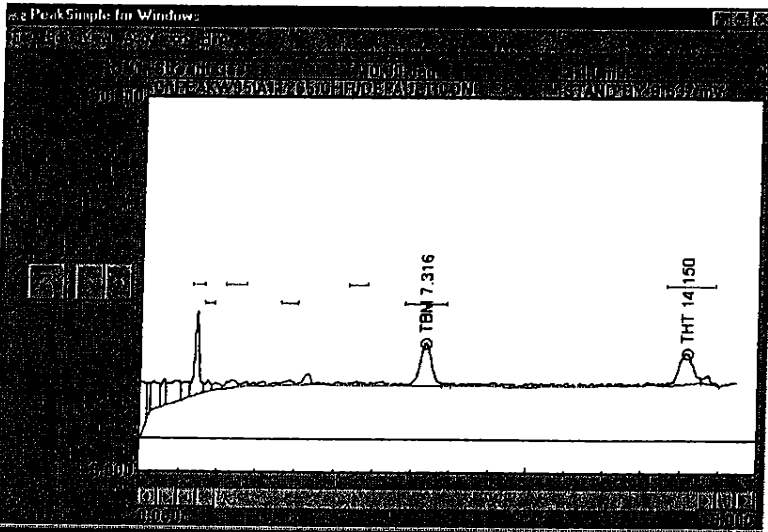
The chromatograph adds all the sulfur compounds together to give a total sulfur value (this is used by some customers to report air emissions). When these analyses were run, TBM, THT and total sulfur were recorded. The difference between the sum of TBM and THT and the total sulfur is the total of other naturally occurring sulfur components; hydrogen sulfide being the primary component.



4 ppm total odorant

[Handwritten signature] 2106107





2/06/07.