

**Feederline 26 - 1,690 ft.  
820 N between 1400 E and the Shoreline Trail**

**Utah County Belt Line Replacement – 3,235 ft.  
820 N between 700 E and 1400 E in Provo**

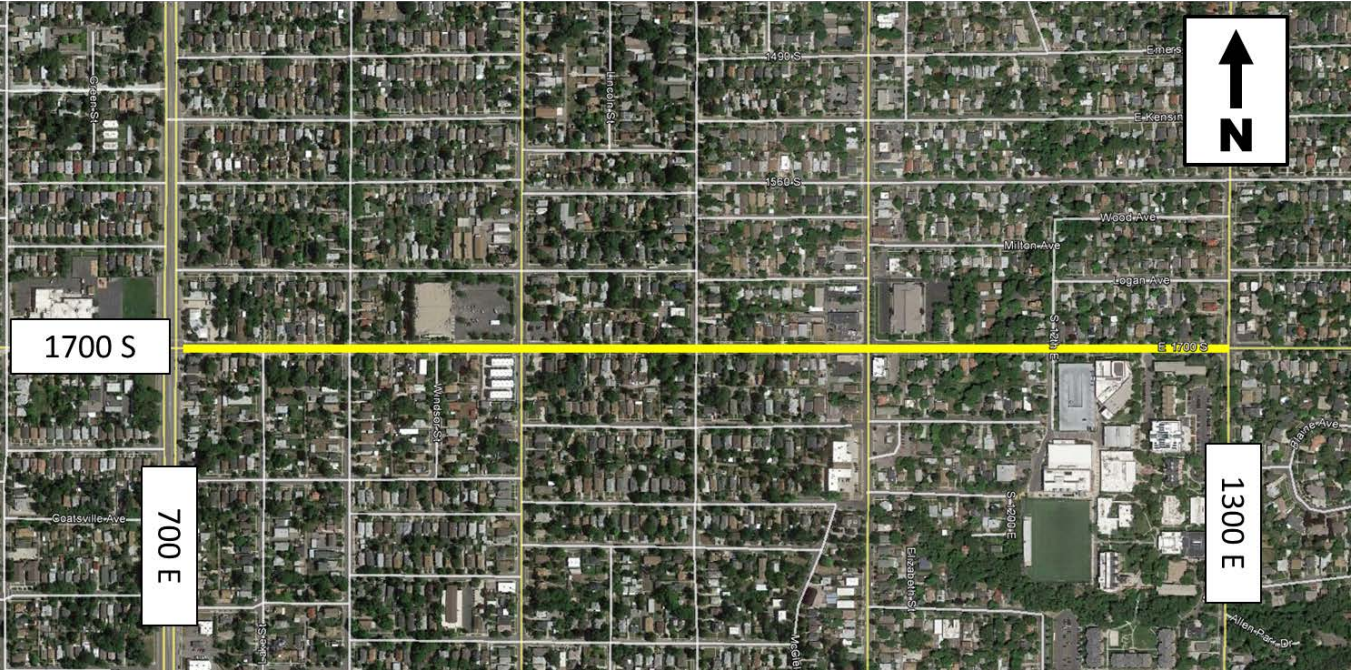


**Davis County Belt Line Replacement – 29,000 ft.  
FL21-50 - Phase I: Glovers Ln in Farmington to 500 S in Bountiful**





**Salt Lake County Belt Line Replacement – 4,600 ft.  
1700 S between 700 E and 1300 E in Salt Lake City**



**Salt Lake County Belt Line Replacement – 6,600 ft.  
1300 E between 800 S and 1700 S in Salt Lake City**





**Salt Lake County Belt Line Replacement – 9,800 ft.  
300 E between 800 S and 2100 S in Salt Lake City**

