

Dominion Energy®

IRP Technical Conference

IRP 2018 Schedule

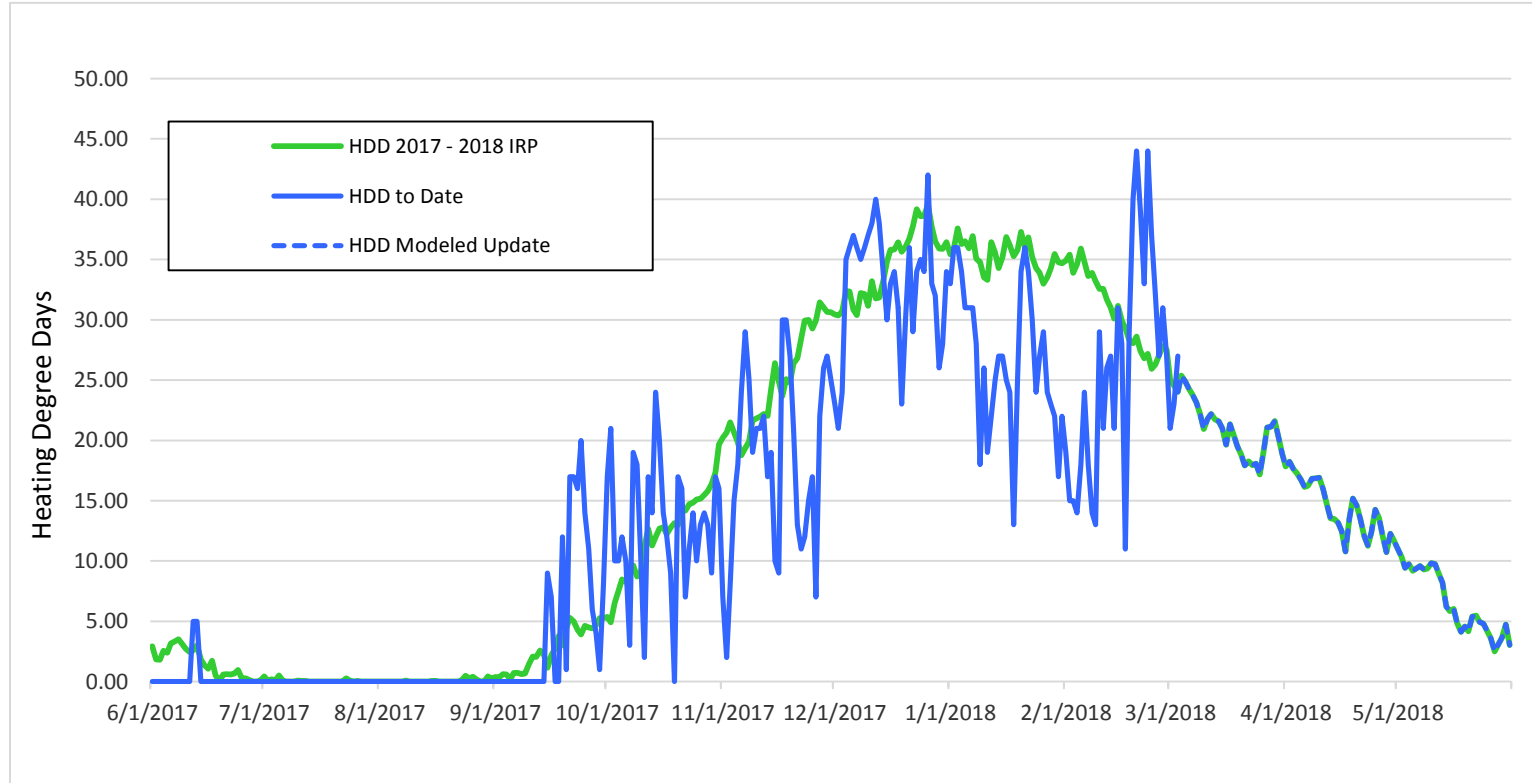
- **February 21, 2018 – Technical Conference**
 - IRP Standards and Guidelines
 - Review of 2017 Order
 - Interruptible Tariff
 - Proposed 2018 IRP Outline
 - Demand Response
- **March 13, 2018 – Technical Conference**
 - Heating Season Review
 - Design Peak-Day Calculation
 - Supply Reliability
- **April 24, 2018 – Technical Conference**
 - RFP Recommendations
 - Wexpro Matters
- **May 16, 2018 – Technical Conference**
 - To be Announced
- **June 26, 2018 – Technical Conference**
 - Presentation of Integrated Resource Plan

Agenda

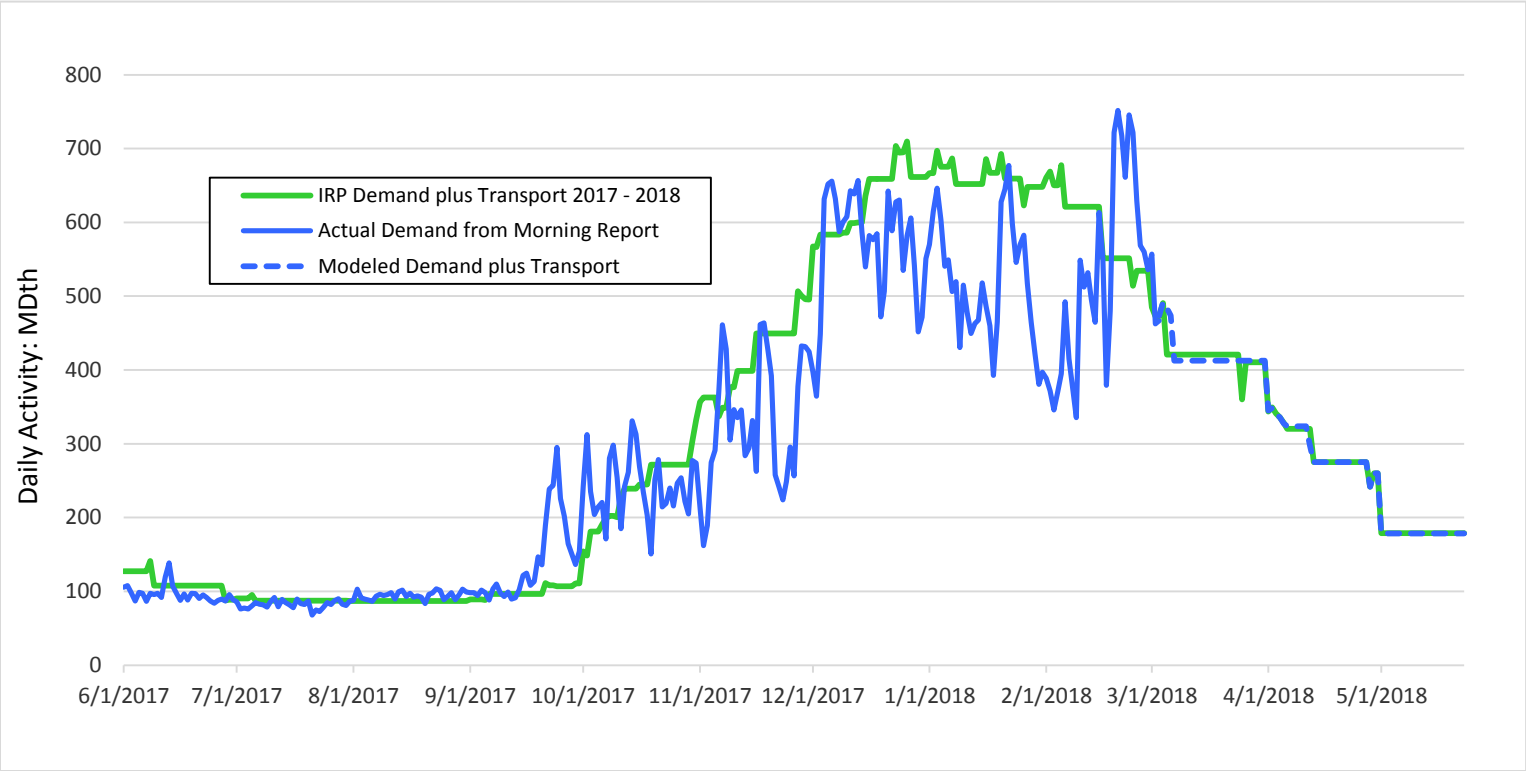
- Heating Season Review
- Design Peak-Day Calculation
- Supply Reliability

Heating Season Review

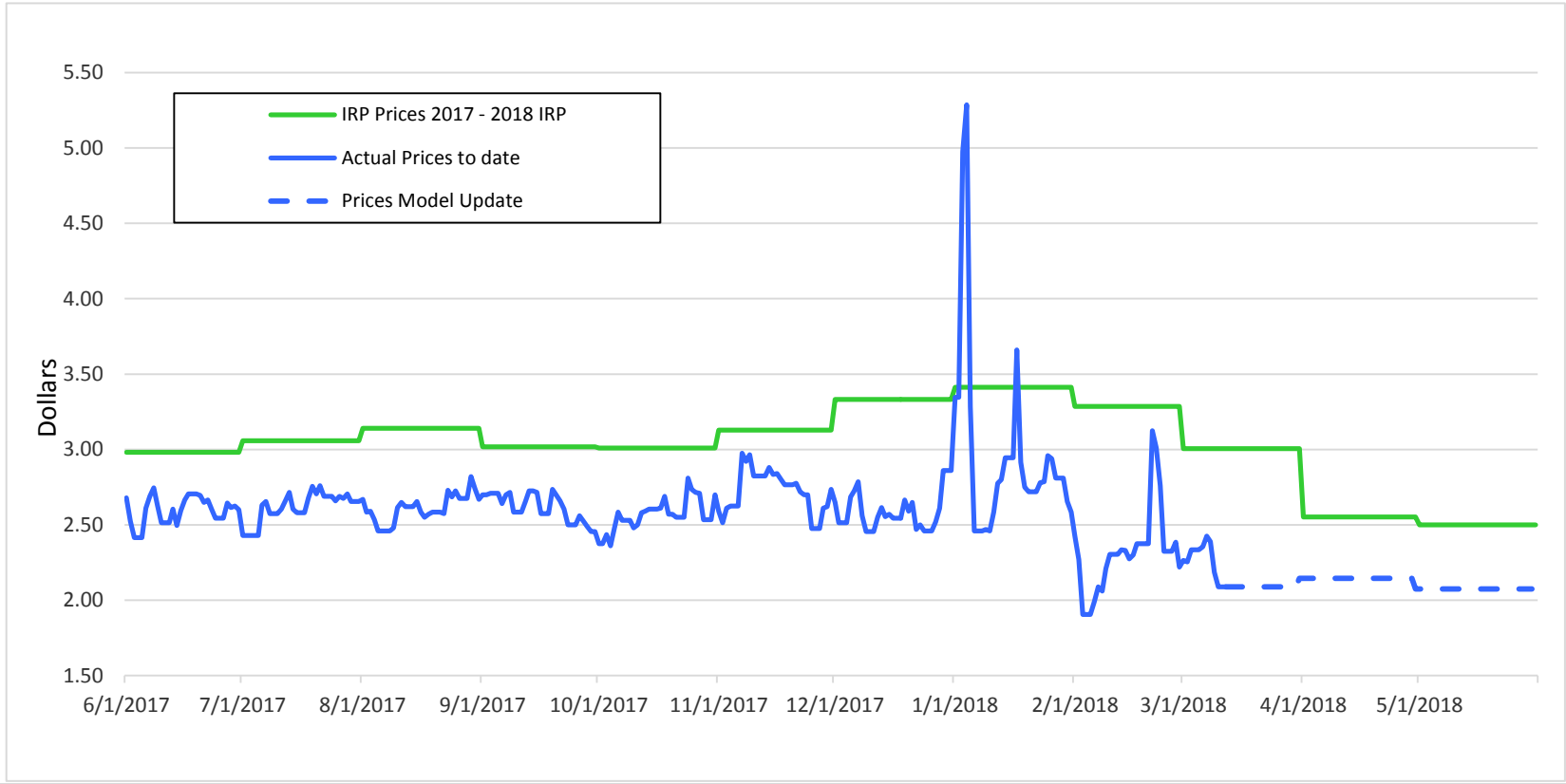
Heating Degree Days



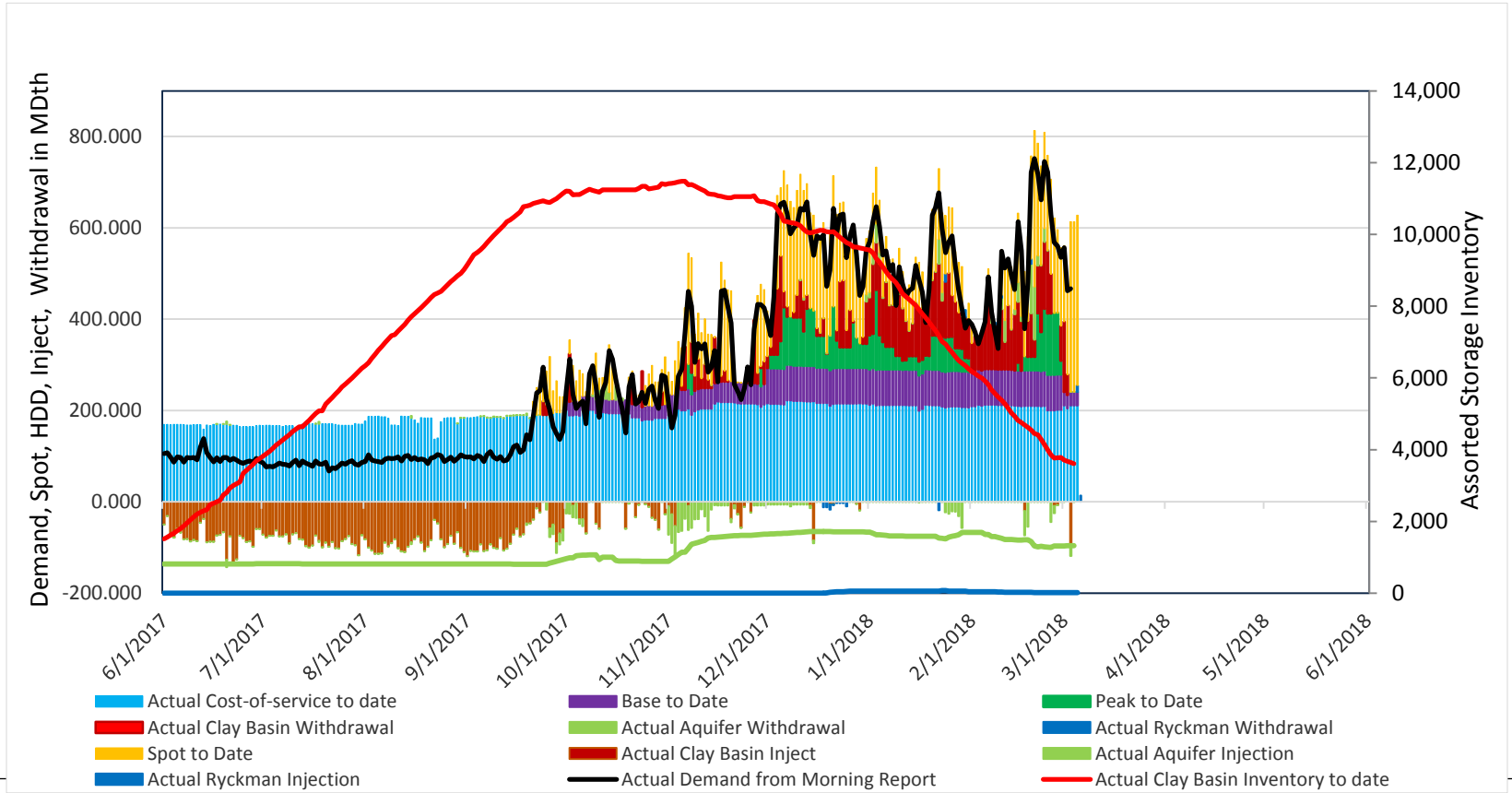
Demand



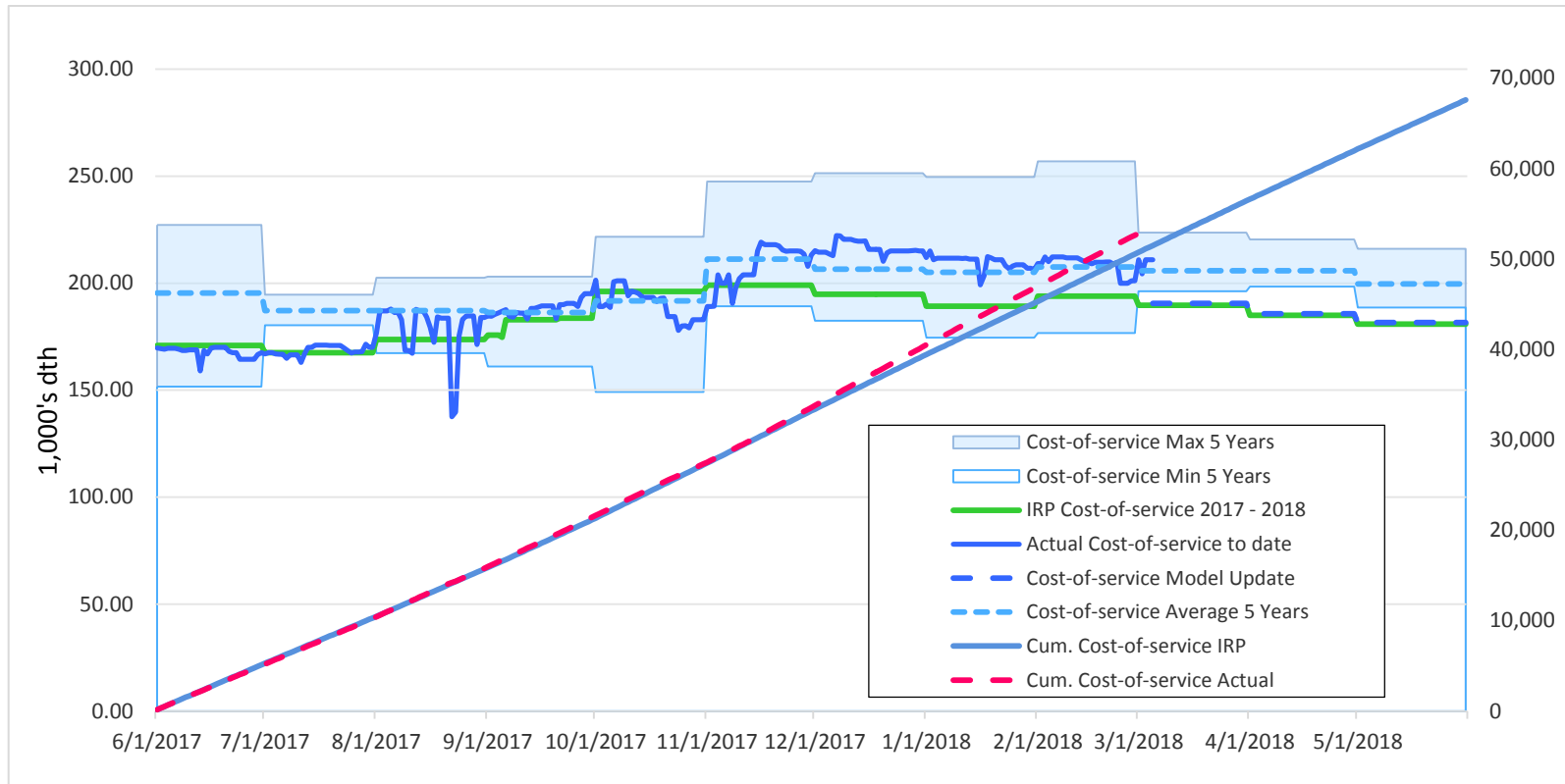
Index Prices



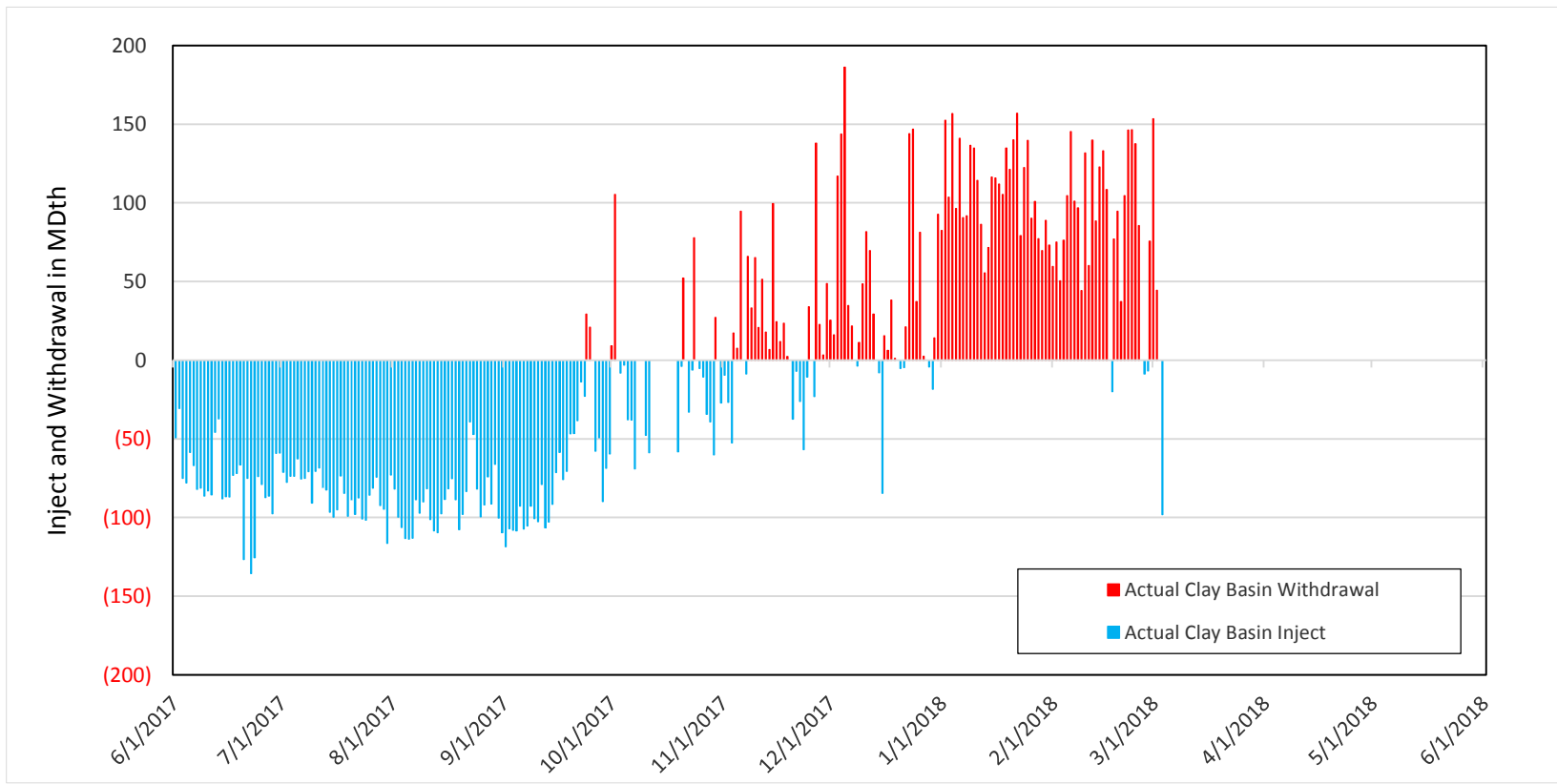
Supply vs. Demand



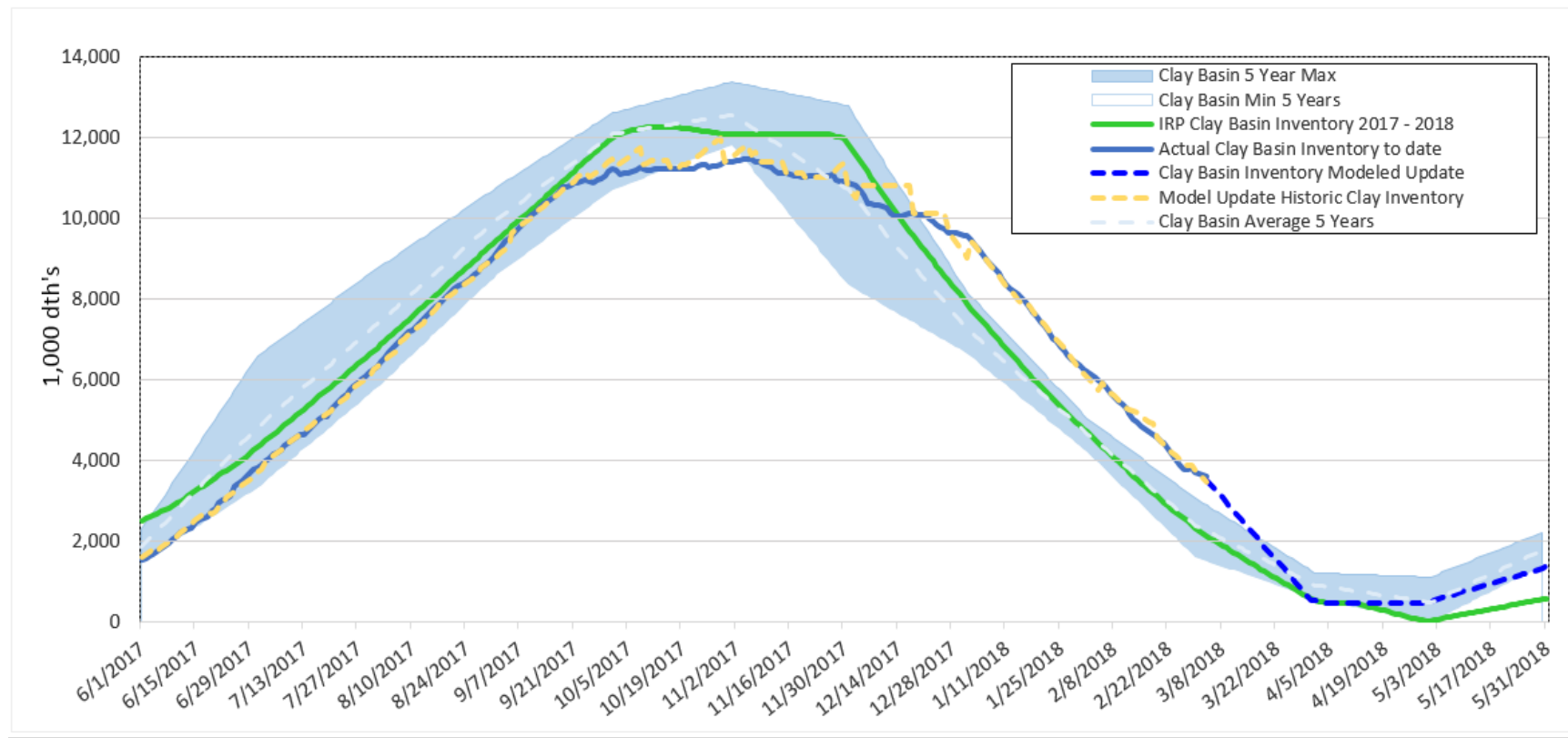
Cost-of-Service Production



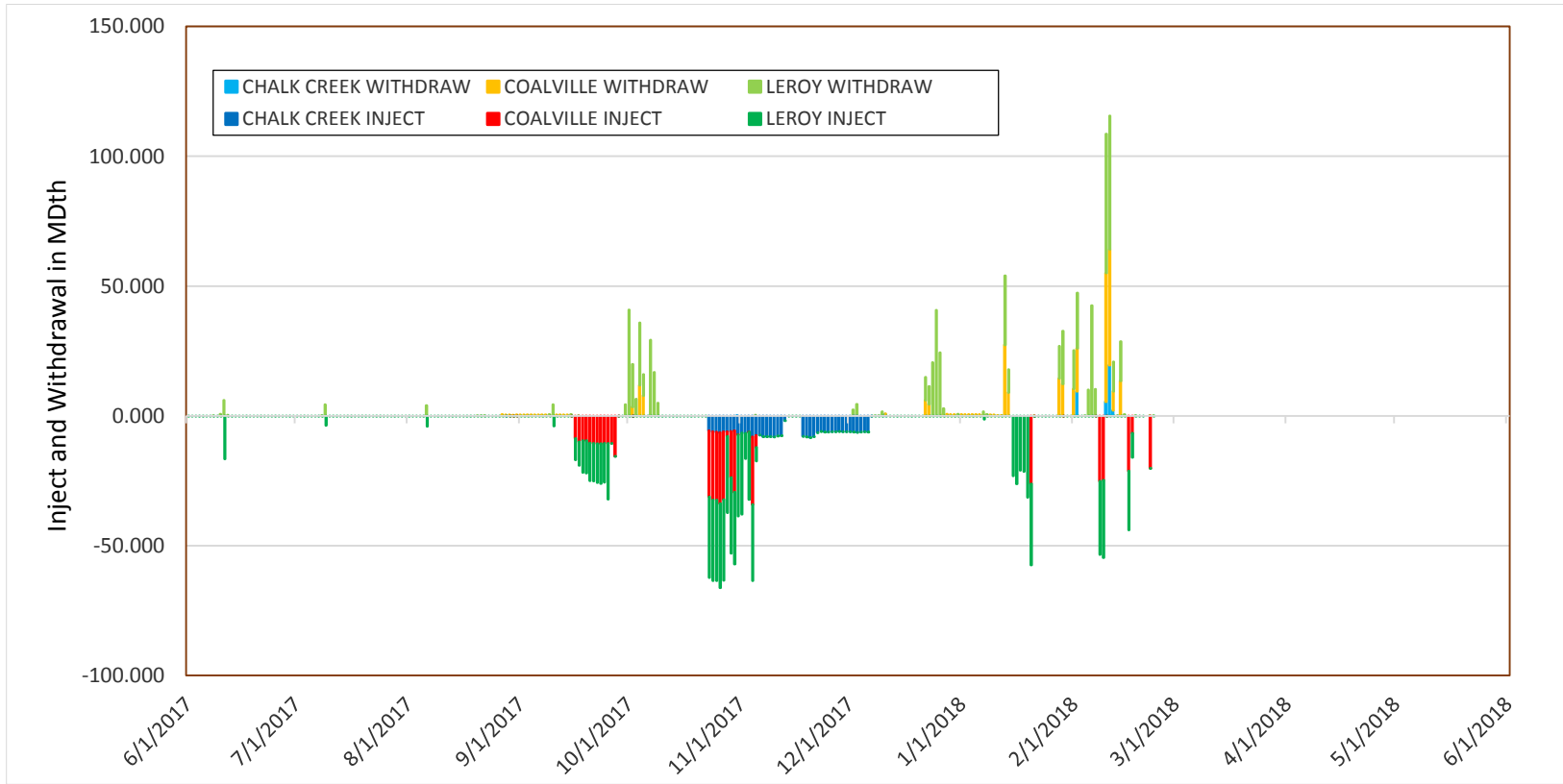
Clay Basin Daily Usage



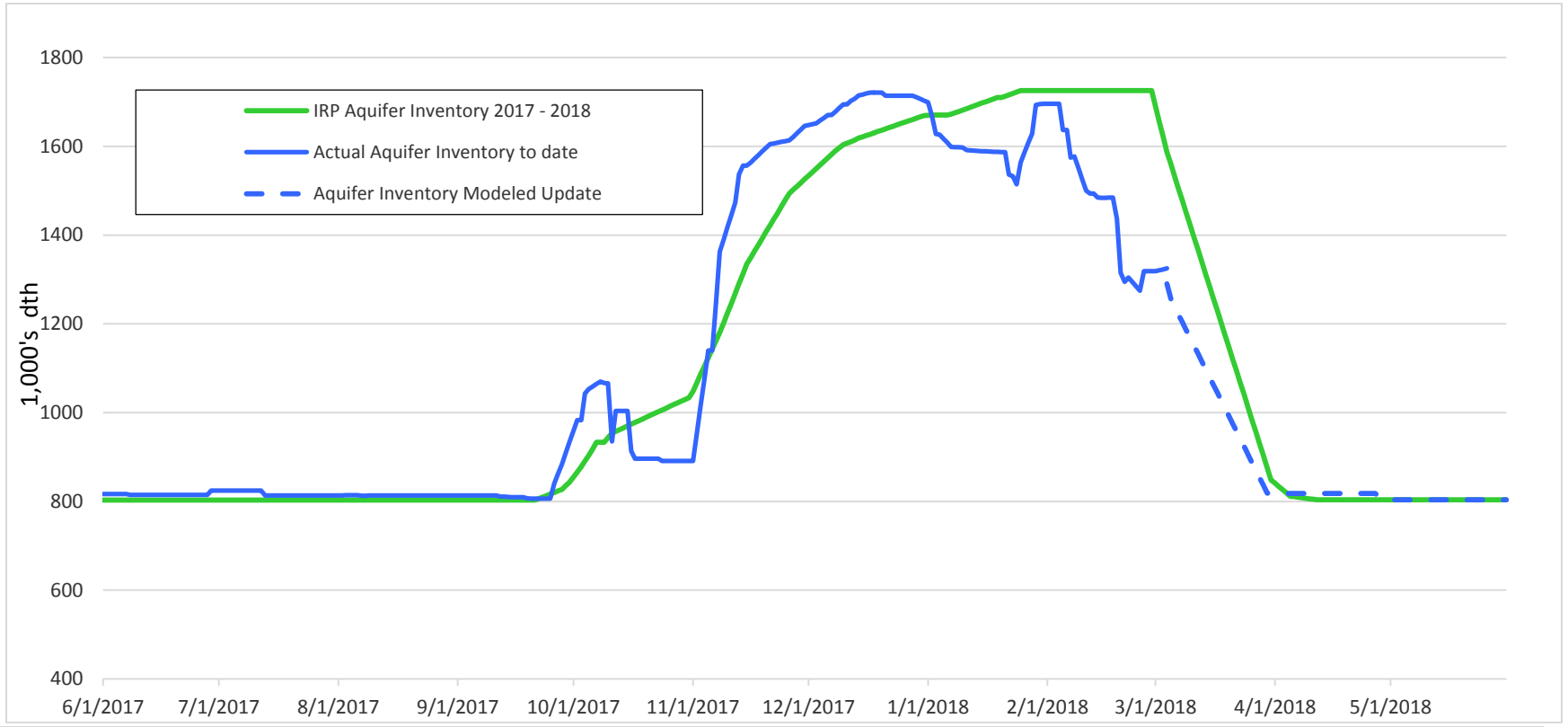
Clay Basin Inventory



Aquifer Daily Usage



Aquifer Inventory



Summary

- The heating season was warmer than normal
 - We had no design-day event this heating season
 - We had several cold snaps
 - Supply issues surrounding the end of February cold snap
- We have received more Cost-of-service gas than estimated in the IRP
- Low index prices in December
 - The model used Spot gas instead of Clay Basin

Design Peak-Day Calculation

Design Peak Day Demand Means:

- Firm sales is estimated through ***statistical analysis*** of daily sendout variables that affect consumption
- Firm transportation is the ***summary*** of daily firm contract amounts

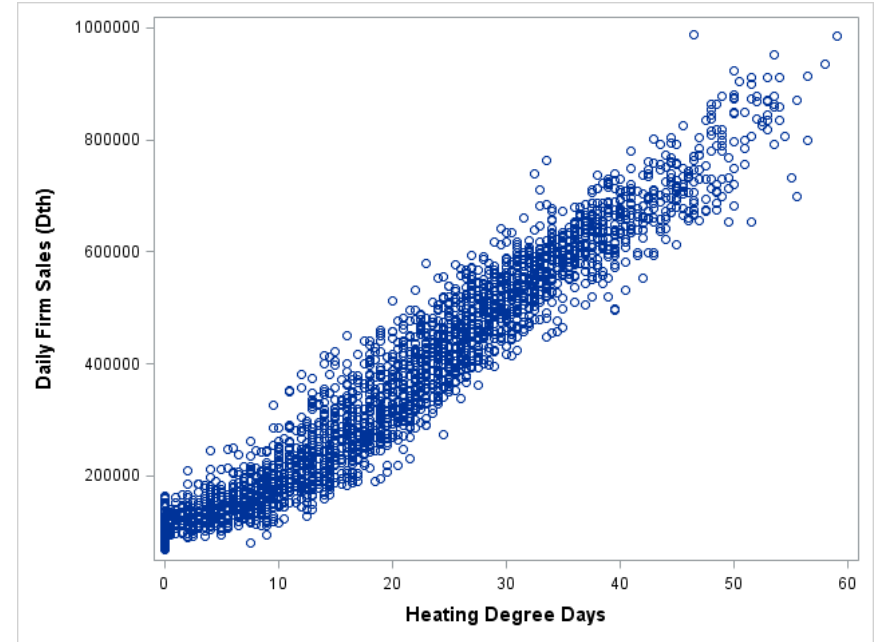


Peak Firm Sales Estimation

Daily Firm Sales Estimation

Variables that affect firm sales are:

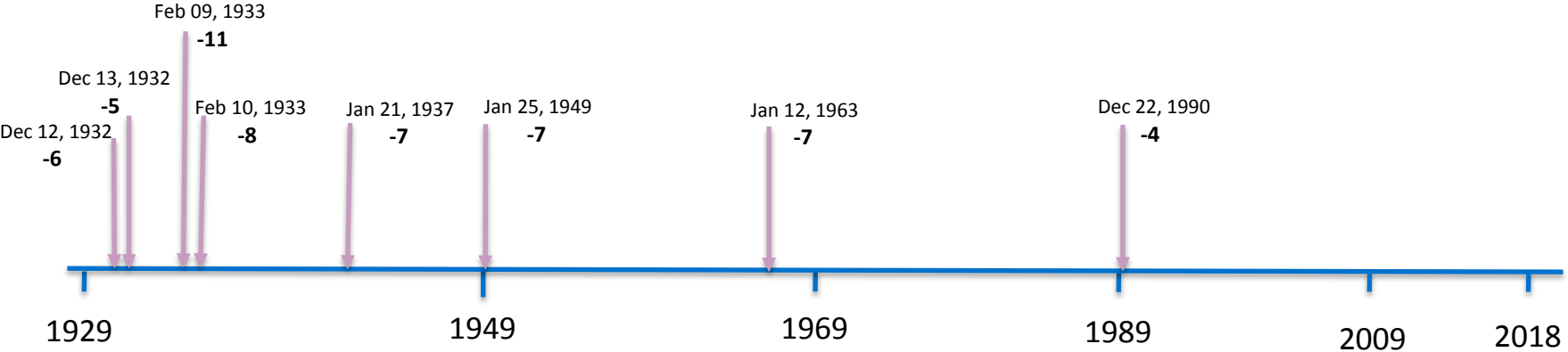
- Heating degree days
- Prior day firm sales
- Average wind speed
- Maximum sustained wind speed
- Day of the week (sales lower on Fridays and weekends)
- Holidays (sales lower on winter holidays)



What does one-in-twenty mean?

- *Recurrence interval (1/20): means 5% probability of occurrence in a given year*
- *May occur once in a 20-year period (38%)*
- *May occur more than once in a 20-year period (64%)*
- *May not occur at all in a 20-year period (36%)*

Low Temperature Occurrences



Illustration

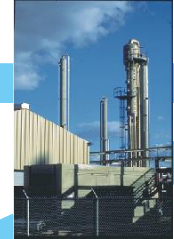
- *Lowest average daily temperature for the year is at -5 degrees or below*
- *This occurs 5 times in 89 years of data*
- *Formula: (number of data points + 1) / number of occurrences*
- *$90 / 5 = 18$: a 1-in-18 year recurrence interval*

Supply Reliability Concerns

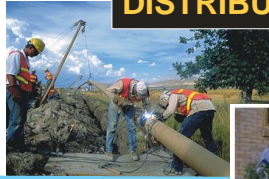
EXPLORATION



PRODUCTION



DISTRIBUTION



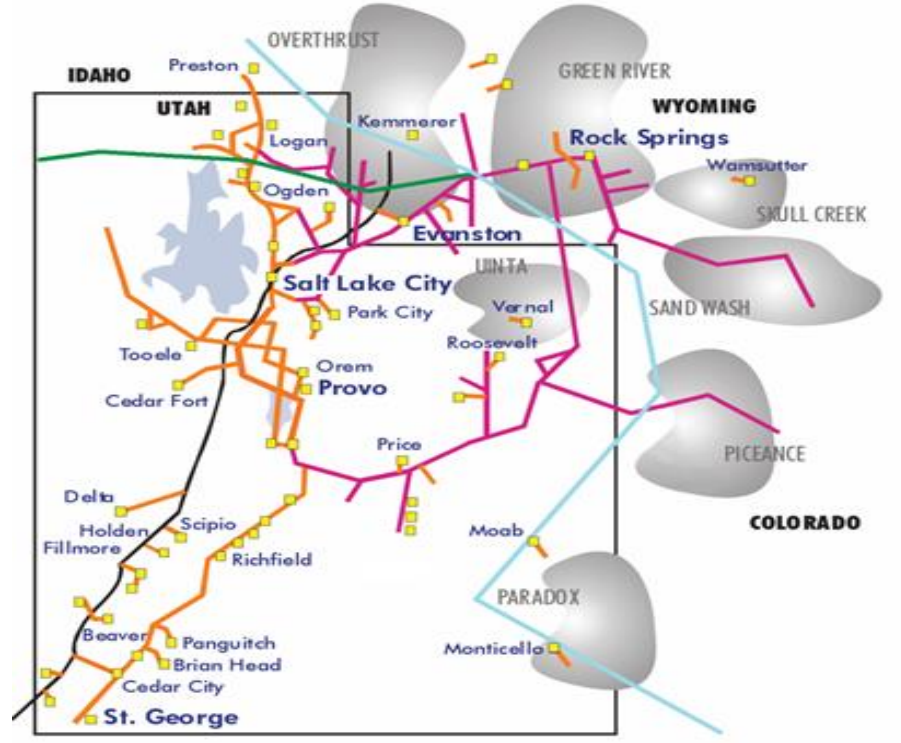
TRANSMISSION



The **Flow** —
Natural Gas



Natural Gas Delivery Chain



Supply Reliability

- DEU relies on suppliers to provide gas
- Supplies can be disrupted for different reasons all along chain
 - Wellhead
 - Gathering
 - Processing Plants
 - Interstate Pipelines
 - Storage



Supply Reliability

- Cold weather results in more disruptions
 - Temperatures colder at wellheads than demand centers
 - Wellhead freeze-offs
 - Gathering line freeze-offs
 - Processing Plants have mechanical issues
 - Interstate Pipelines allocate capacity
 - Storage fields allocate capacity
- Upstream pipelines deliver only what is received into their pipes

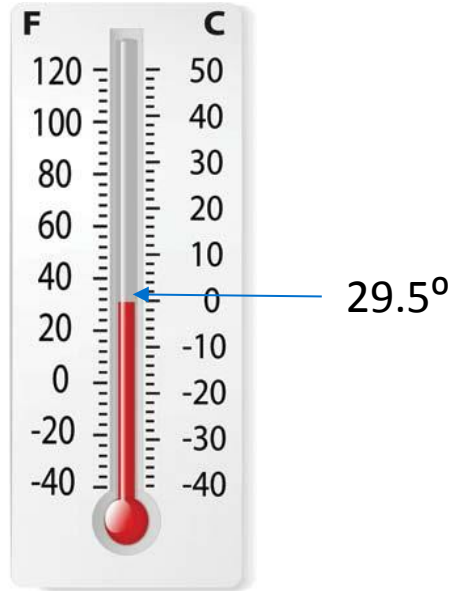
Issues in Arizona - February 2011

- Due to supply shortfalls, residential customers lost service
 - Arizona
 - 24,000 customers
 - Service restored in 7 days
 - VP of Gas Supply
 - 1 in 60 year weather event
 - 1 in 30 year peak weather event warming for 30 years
 - Cold weather forecast, lows decreasing closer to event

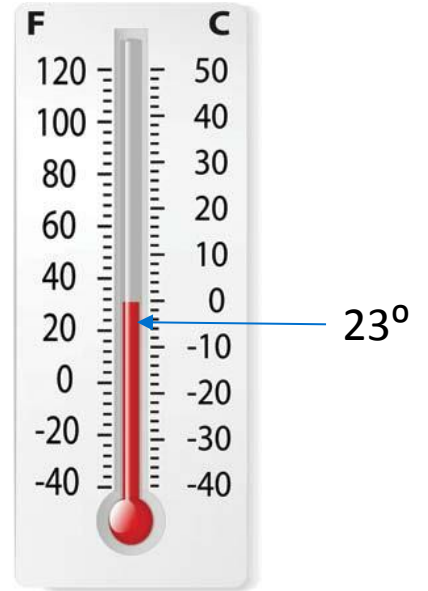
Issues in Arizona- February 2011



1 in 30 year event



1 in 60 year event



Issues in New Mexico - February 2011

- New Mexico
 - 19,000 customers
 - Service restored in 6 days
 - \$1M fund established to help with customer claims
- Similar situation in colder climate would have been much worse

Issues in West Virginia - December 2017

- Due to a compressor station failure, residential customers lost service
 - Town of Weston
 - 2,500 customers
 - Service restored in 6 days



Issues on DEU - Supply Shortfalls

- Supply shortfalls have occurred multiple times in the last five years
 - 12/5/2013
 - 12/30/2014
 - 1/1/2016
 - 1/6/2017
 - 2/20/2018
- Supply shortfalls are expected to continue to be an issue when cold weather occurs



Supply Reliability

- Extent and length of supply disruption not predictable or foreseeable
- Decisions must be made without knowledge of future supply or demand changes
- Replacement gas is typically expensive and not always available to purchase

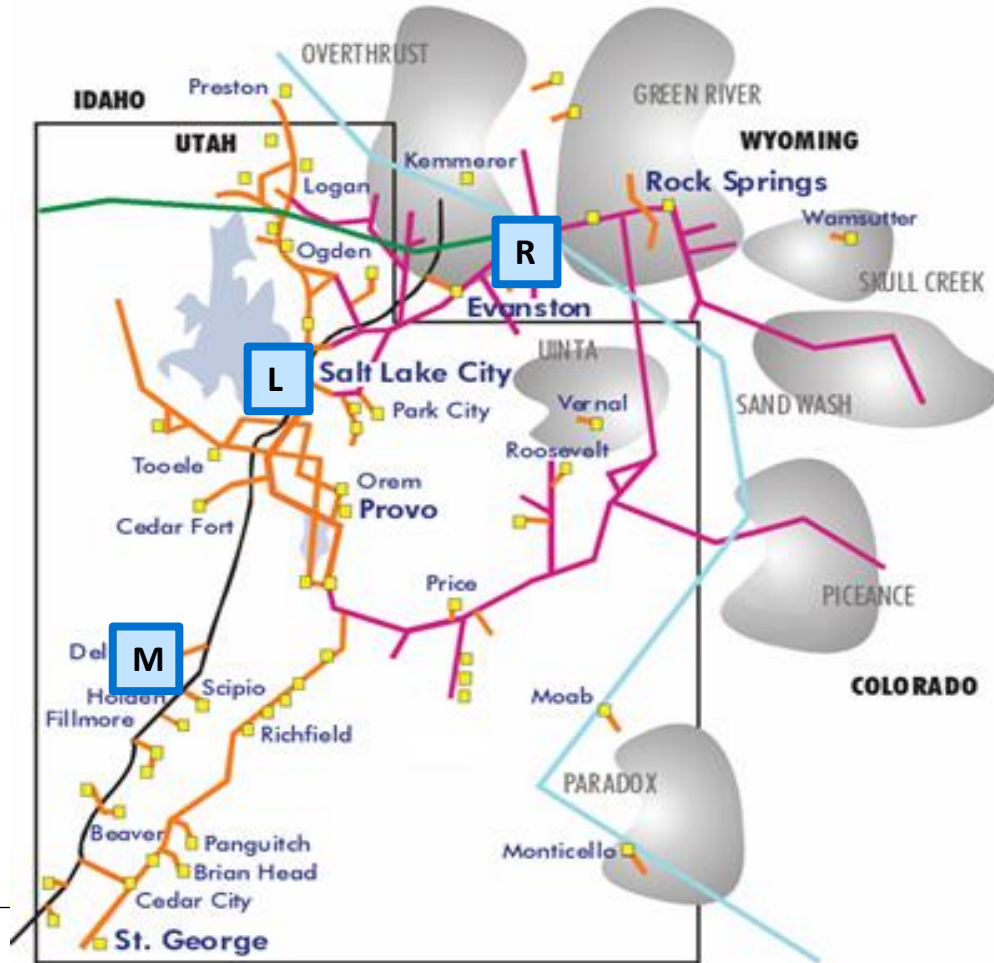


Supply Reliability

- Reliable firm service is important to customers, DEU, and regulators
- DEU needs a tool to improve reliability for its customers to avoid future service outages



Storage options



Questions?