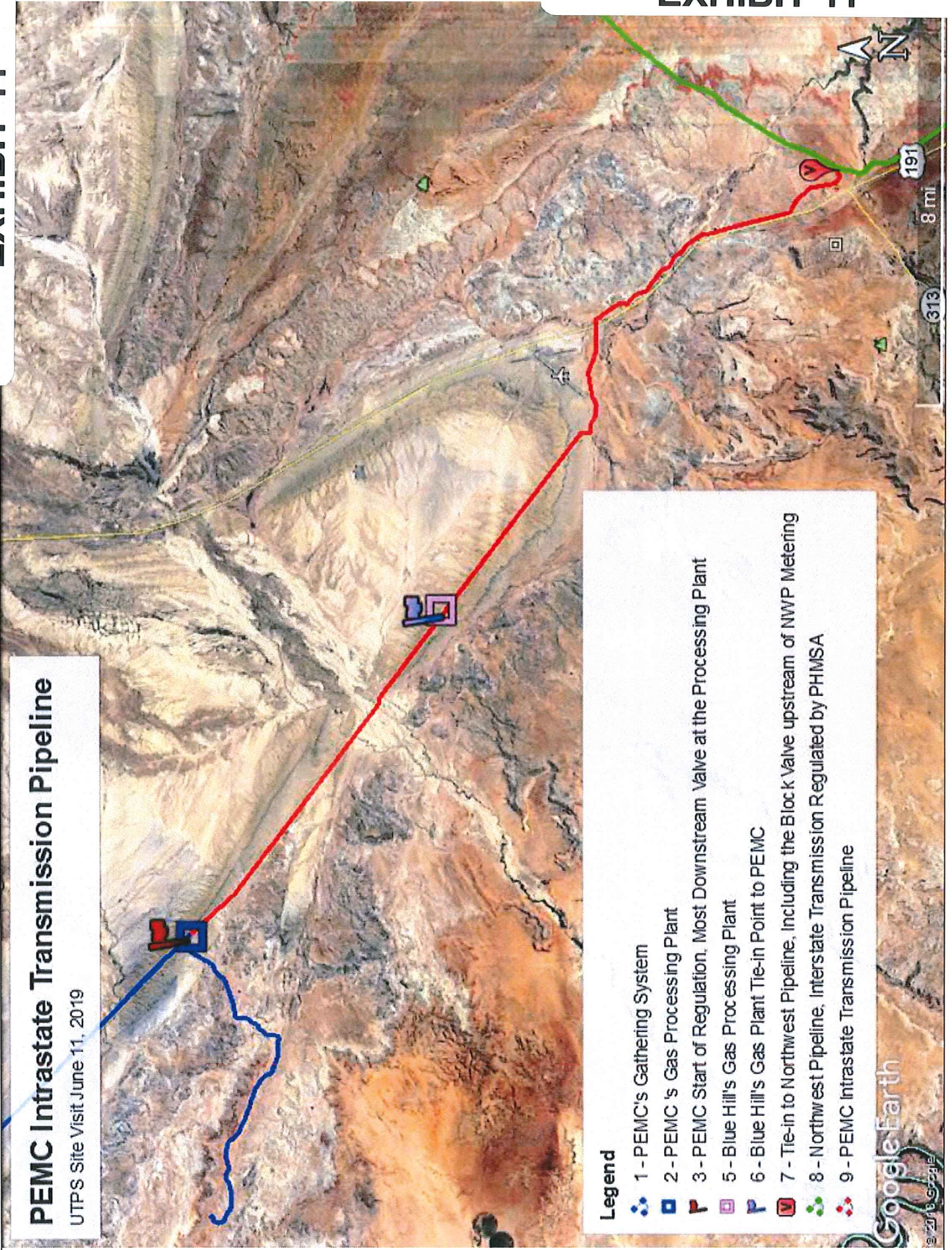


PEMC Intrastate Transmission Pipeline

UTPS Site Visit June 11, 2019

Legend

- 1 - PEMC's Gathering System
- 2 - PEMC's Gas Processing Plant
- 3 - PEMC Start of Regulation, Most Downstream Valve at the Processing Plant
- 5 - Blue Hill's Gas Processing Plant
- 6 - Blue Hill's Gas Plant Tie-in Point to PEMC
- 7 - Tie-in to Northwest Pipeline, including the Block Valve upstream of NWP Metering
- 8 - Northwest Pipeline, Interstate Transmission Regulated by PHMSA
- 9 - PEMC Intrastate Transmission Pipeline








PEMC Intrastate Transmission Pipeline

UTPS Site Visit June 11, 2019

BV-20
BV-19
BV-18

BV-21

Legend

-  7 - Tie-in to Northwest Pipeline, including the Block Valve upstream of NWP Metering
-  8 - Northwest Pipeline, Interstate Transmission Regulated by PHMSA
-  9 - PEMC Intrastate Transmission Pipeline, Pig Receiver
-  Observed Block Valve (BV-18); Open Position; Chained and Locked
-  Observed Block Valve (BV-19 Vent, BV-20 and BV-21); Close Position; Chained and Locked

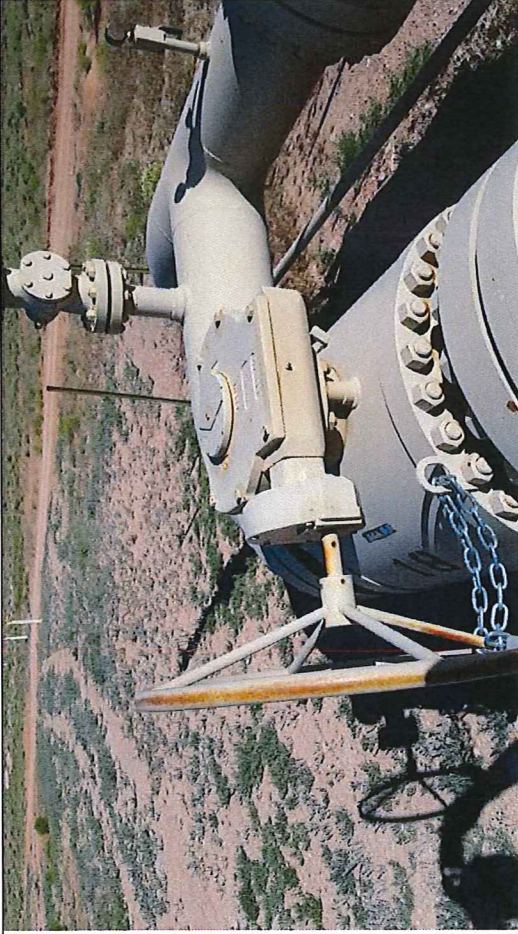
Google Earth

© 2018 Google

40 ft



UTPS Site Visit on June 11, 2019: Tie-In to Northwest Williams Pipeline



Picture #1: Block Valve BV-18, observed in open position, with chain and lock.



Picture #2: Pressure gauge near BV-18, observed pressure in pipeline, approximately 680 psig.



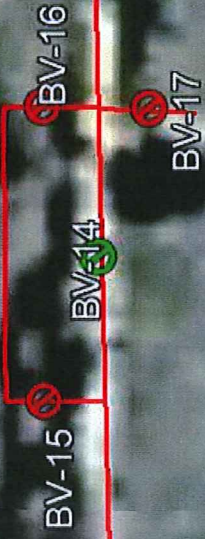
Picture #3: Block Valve BV-20, observed in close position with chain and lock.



Picture #4: Block Valve BV-21, observed close position with chain and lock.

PEMC Intrastate Transmission Pipeline

UTPS Site Visit June 11, 2019



Legend

- 4 - PEMC 16 Inch Steel Line, Intrastate Transmission Regulated by State of Utah
- Observed Block Valve (BV-14); Open position; Chained and locked.
- Observed Block Valve (BV-15, BV-16 and BV-17); Close position; Chained and locked.

Google Earth

©2018 Google

20 ft



UTPS Site Visit on June 11, 2019: Block Valve Assembly southwest of Moab Airport.



Picture #5: Block Valve BV-14 south side, observed in open position with chain and lock.



Picture #6: Block Valve assembly BV-14, BV-15, BV-16, and BV-17.



Picture #7: Block Valve BV-14 north side, observed in close position with chain and lock.



Picture #8: Observed Corrosion Protection SSD (Solid State Decoupler) dismounted from the pole.

PEMC Intrastate Transmission Pipeline

UTPS Site Visit June 11, 2019



Legend

- 3 - Wesco Tie-in Point at Blue Hills Station
- 4 - PEMC 16 Inch Steel Line, Intrastate Transmission Regulated by State of Utah
- 6 - Blue Hill's Gas Plant Tie-in Point to PEMC
- Observed Block Valve (BV-11, BV-12 and BV-13); Close Position; Chained and Locked
- Observed Block Valve (BV-9 and BV-10); Open Position; Chained and Locked

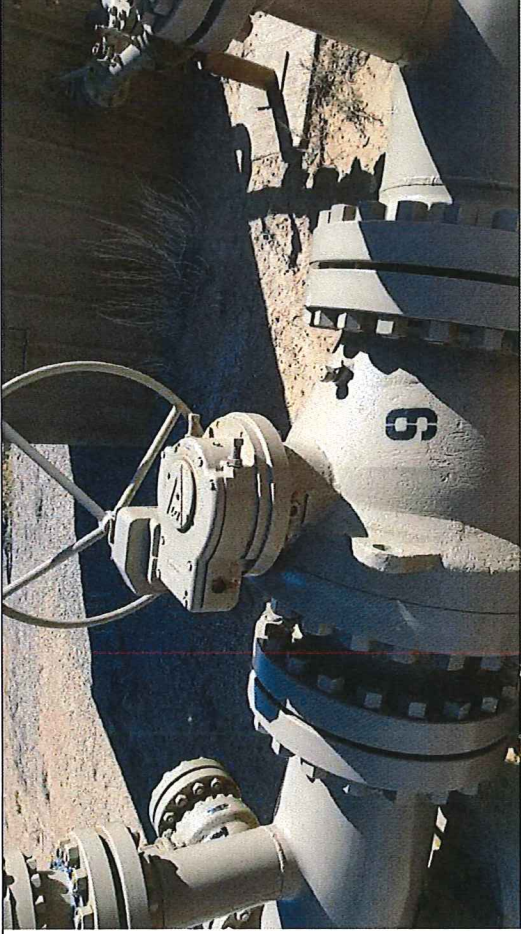
Google Earth

© 2018 Google

10 ft



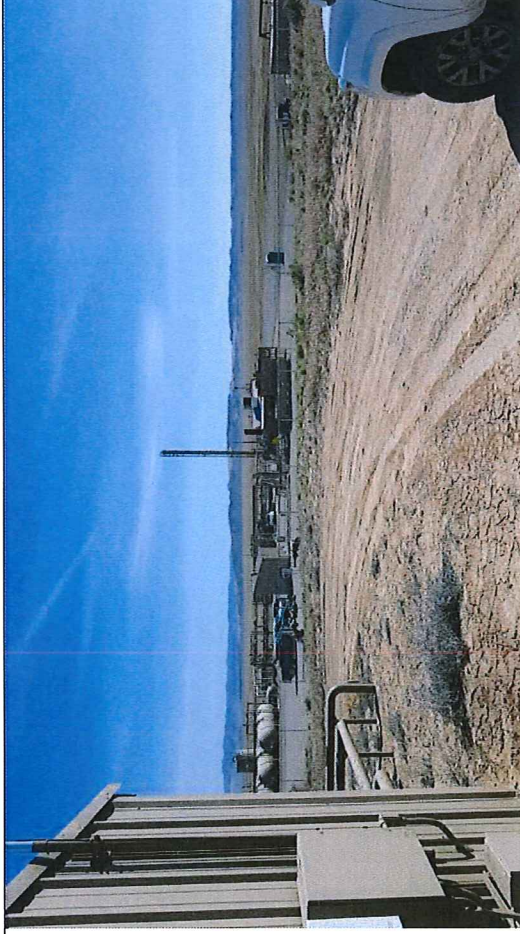
UTPS Site Visit on June 11, 2019: Wesco Tie-In Point at Blue Hills Station.



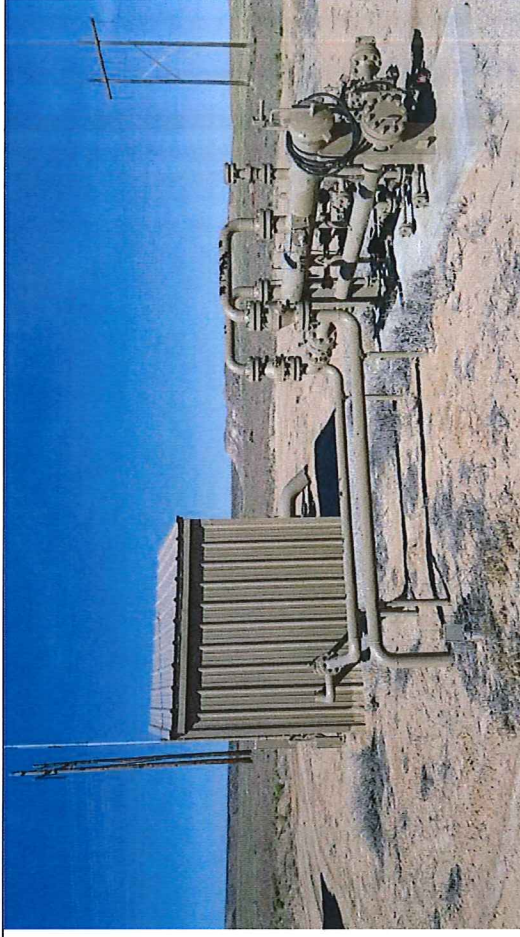
Picture #9: Block Valve BV-9, observed in open position with chain and lock.



Picture #10: Block Valve BV-10, observed in open position with chain and lock.



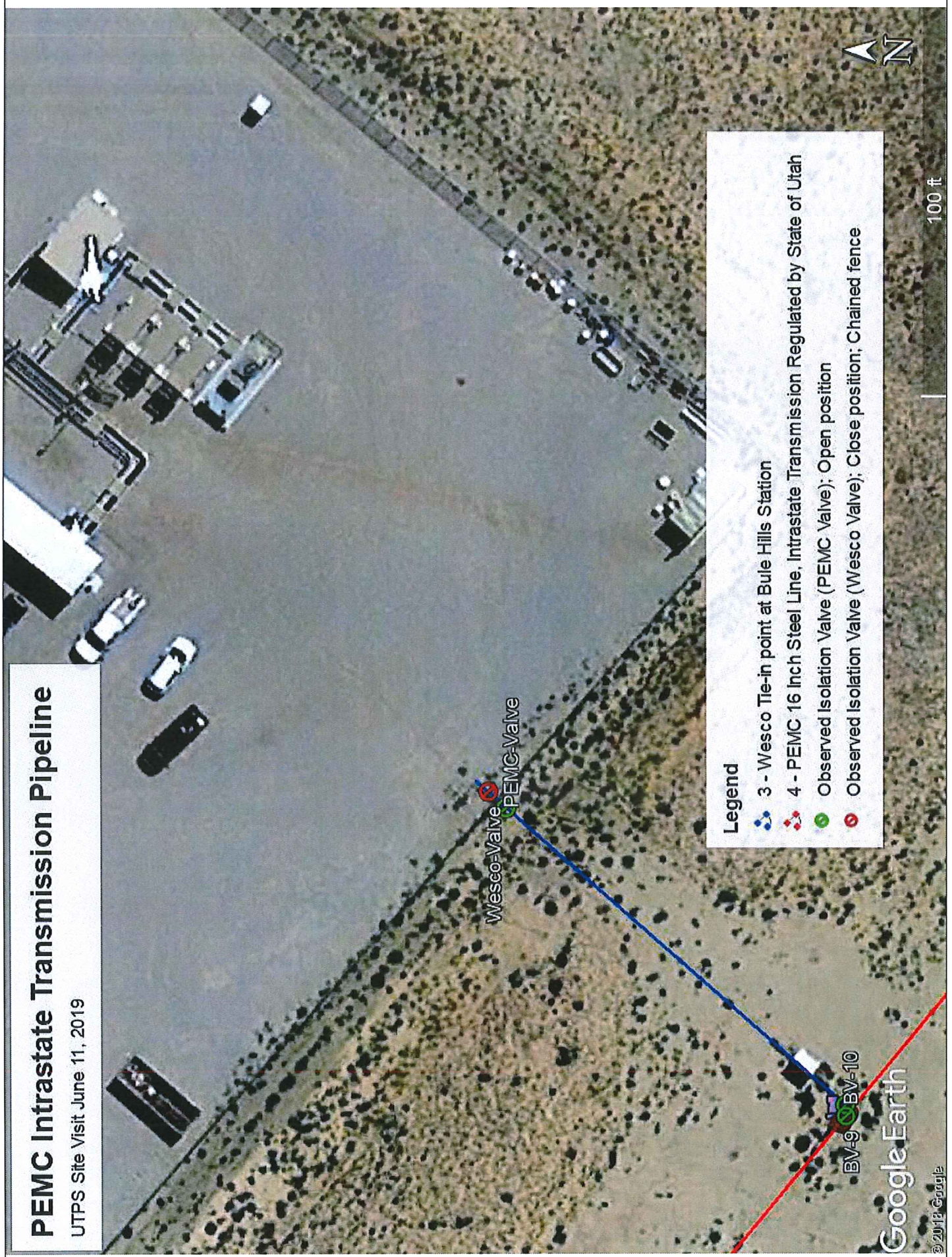
Picture #11: Wesco Compressor Station at Blue Hills



Picture #12: Wesco Gathering Line to their compressor station.

PEMC Intrastate Transmission Pipeline

UTPS Site Visit June 11, 2019



Legend

- 3 - Wesco Tie-in point at Bule Hills Station
- 4 - PEMC 16 Inch Steel Line, Intrastate Transmission Regulated by State of Utah
- Observed Isolation Valve (PEMC Valve); Open position
- Observed Isolation Valve (Wesco Valve); Close position; Chained fence

Google Earth

© 2019 Google

100 ft

UTPS Site Visit on June 11, 2019: Wesco Compressor at Blue Hills Station.



Picture #13: Observe Wesco Compressor Station at Blue Hills PEMC Valve open position.



Picture #14: Observed Wesco Compressor Station at Blue Hills pressure gauge approximately 680 psig.



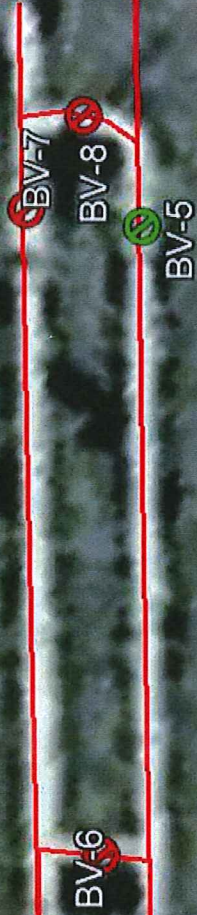
Picture #15: Observed Wesco Compressor Station at Blue Hills Wesco valve close position.



Picture #16: Observed Wesco Compressor Station at Blue Hills.

PEMC Intrastate Transmission Pipeline

UTPS Site Visit June 11, 2019



Legend

- 4 - PEMC 16 Inch Steel Line, Intrastate Transmission Regulated by State of Utah Pig Launcher
- Observed Block Valve (BV-5): Open position; Chained and locked
- Observed Block Valve (BV-6, BV-7, and BV-8): Close position; Chained fence

Google Earth

©2018 Google

30 ft

UTPS Site Visit on June 11, 2019: PEMC Pig Launcher



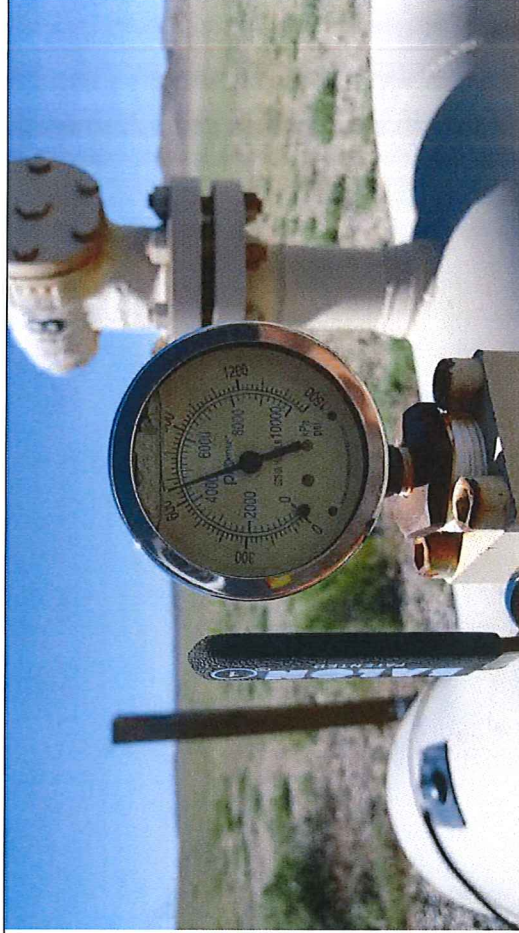
Picture #17: Observed pig launcher with BV-7 and BV-8 in the close position and BV-5 in the open position. All valves chained and locked.



Picture #18: Block Valve BV-6, observed in close position with chain and lock.



Picture #19: PEMC Pig Launcher.



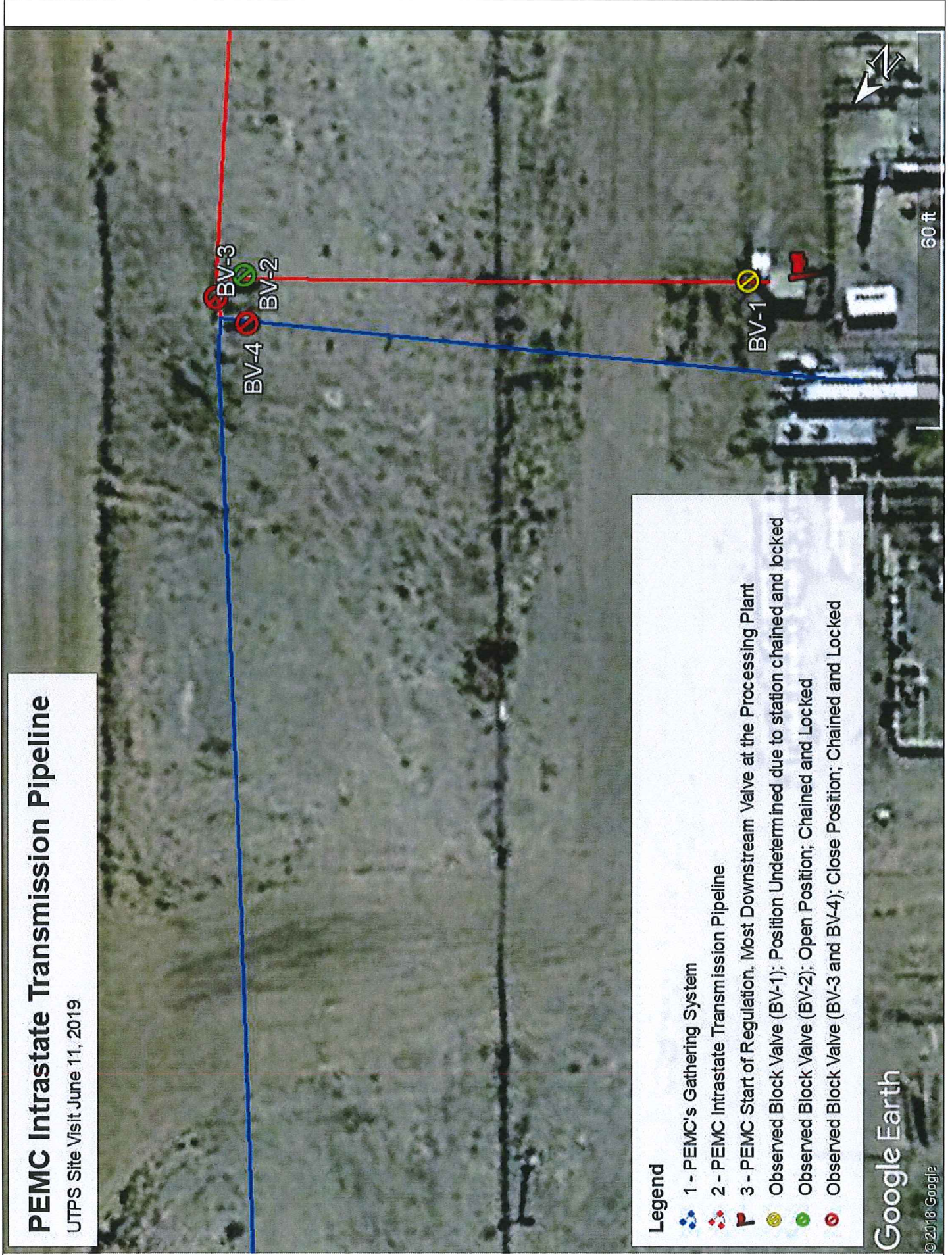
Picture #20: Pressure gauge near BV-7 approximately 680 psig.

PEMC Intrastate Transmission Pipeline

UTPS Site Visit June 11, 2019

Legend

- 1 - PEMC's Gathering System
- 2 - PEMC Intrastate Transmission Pipeline
- 3 - PEMC Start of Regulation, Most Downstream Valve at the Processing Plant
- Observed Block Valve (BV-1); Position Undetermined due to station chained and locked
- Observed Block Valve (BV-2); Open Position; Chained and Locked
- Observed Block Valve (BV-3 and BV-4); Close Position; Chained and Locked



Google Earth

©2018 Google

UTPS Site Visit on June 11, 2019: PEMC Compressor Station



Picture #21: Observed valve assembly east of PEMC compressor station with BV-3 and BV-4 in the close position and BV-2 in the open position. All valves chained and locked.



Picture #22: Pressure gauge near BV-3 on the gathering side, approximately 250 psig.



Picture #23: Observed PEMC compressor station with BV-2 in the open position.



Picture #24: Observed PEMC compressor station exposed piping near the east fence.