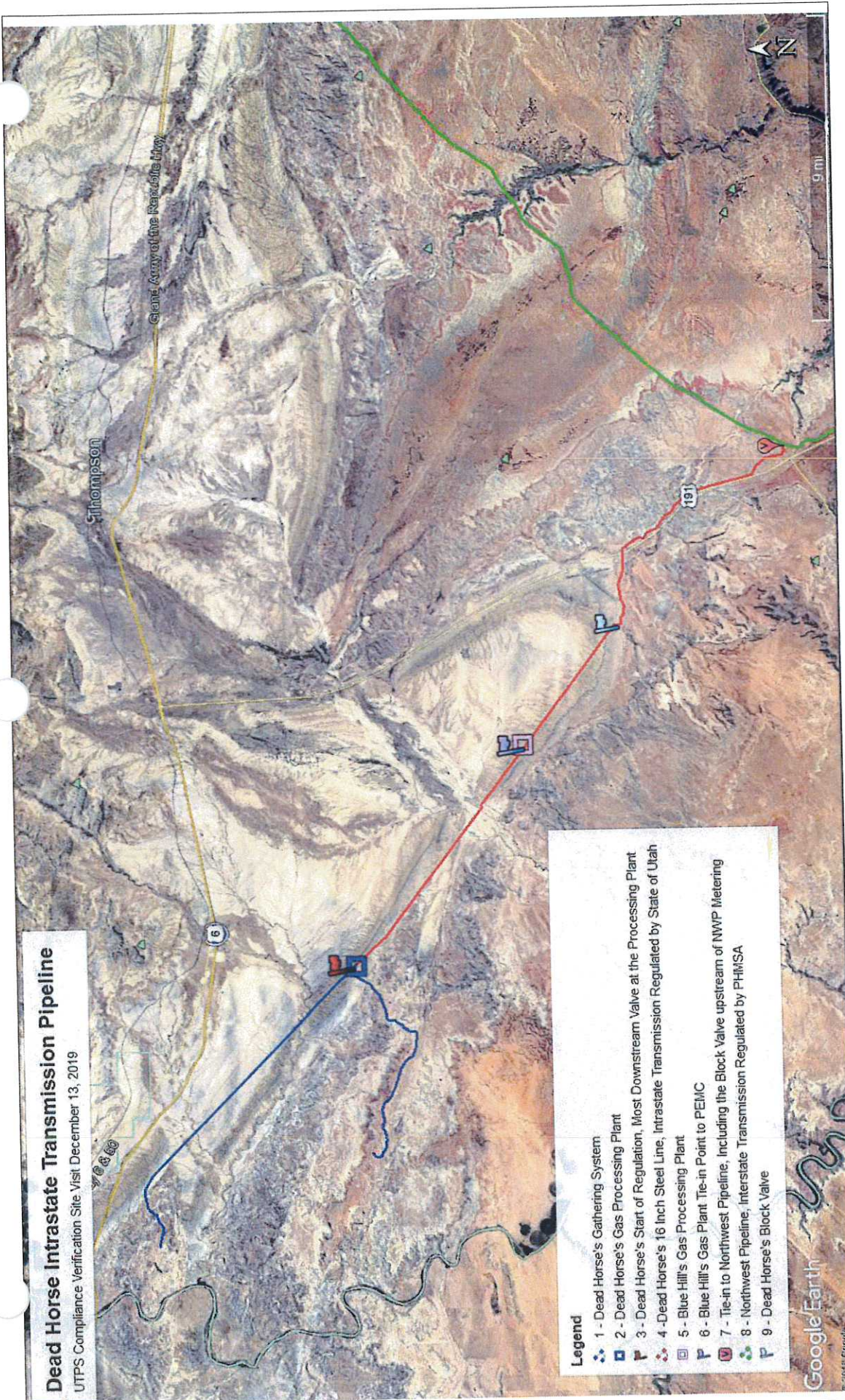


Dead Horse Intrastate Transmission Pipeline

UTPS Compliance Verification Site Visit December 13, 2019

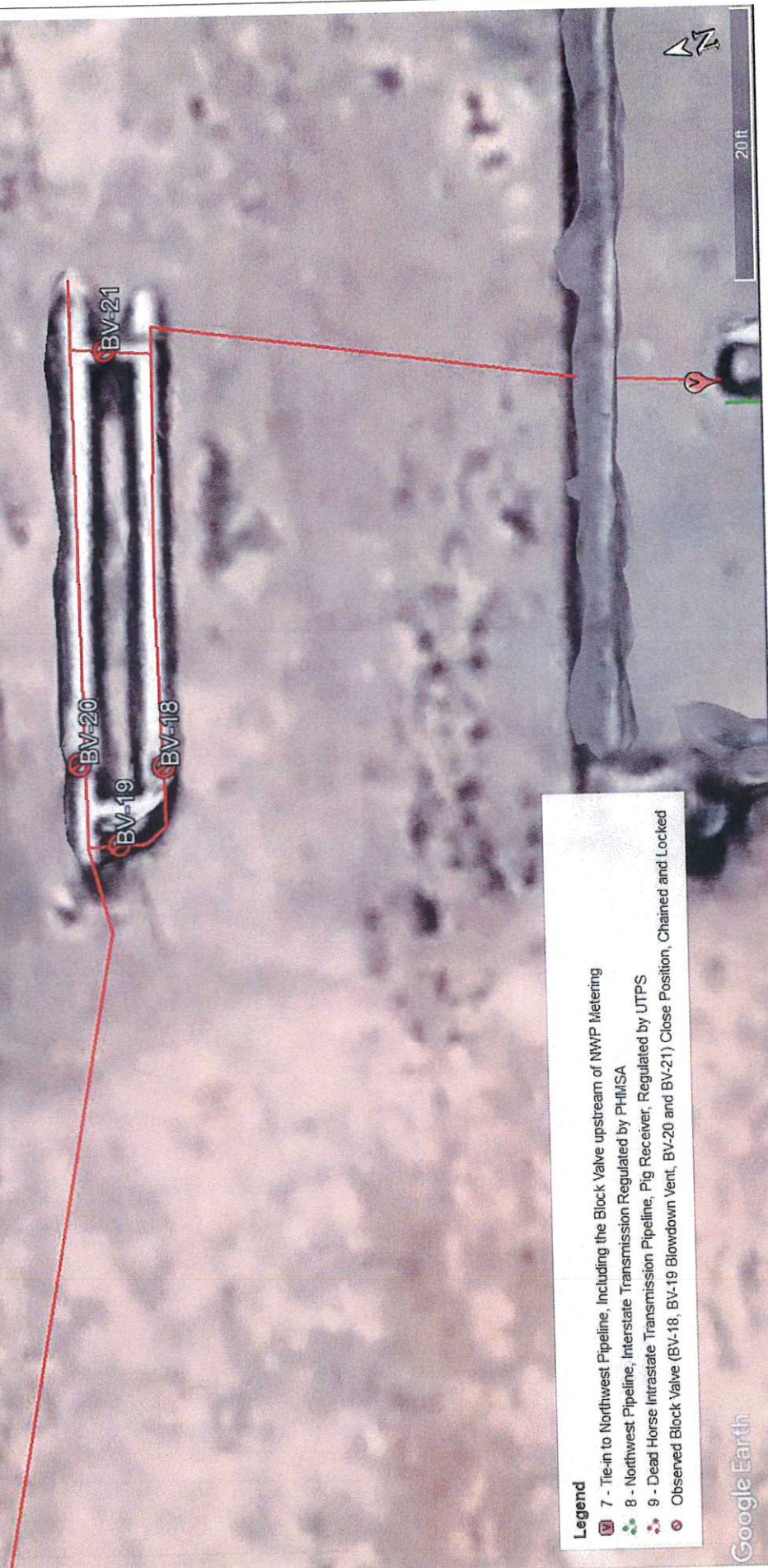


- Legend**
- 1 - Dead Horse's Gathering System
 - 2 - Dead Horse's Gas Processing Plant
 - 3 - Dead Horse's Start of Regulation, Most Downstream Valve at the Processing Plant
 - 4 - Dead Horse's 16 Inch Steel Line, Intrastate Transmission Regulated by State of Utah
 - 5 - Blue Hill's Gas Processing Plant
 - 6 - Blue Hill's Gas Plant Tie-in Point to PEMC
 - 7 - Tie-in to Northwest Pipeline, Including the Block Valve upstream of NWP Metering
 - 8 - Northwest Pipeline, Interstate Transmission Regulated by PHMSA
 - 9 - Dead Horse's Block Valve

EXHIBIT 24
WIT: DRU
DATE: 12-19-19
ADVANCED REPORTING SOLUTIONS

Dead Horse Intrastate Transmission Pipeline

UTPS Compliance Verification Site Visit December 13, 2019



Legend

- 7 - Tie-in to Northwest Pipeline, including the Block Valve upstream of NWP Metering
- 8 - Northwest Pipeline, Interstate Transmission Regulated by PHMSA
- 9 - Dead Horse Intrastate Transmission Pipeline, Pig Receiver, Regulated by UTPS
- Observed Block Valve (BV-18, BV-19 Blowdown Vent, BV-20 and BV-21) Close Position, Chained and Locked

Google Earth

© 2019 Google

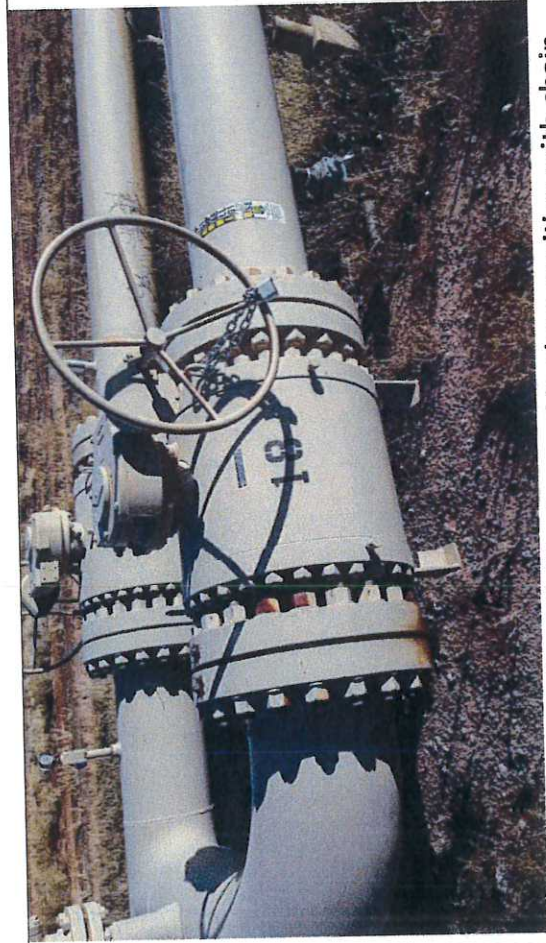
UTPS Site Visit on December 13, 2019: Tie-In to Northwest Williams Pipeline



Picture #1: PEMC Pig Receiver near Williams Tap.



Picture #2: Block Valve BV-21, observed in close position with chain and lock.



Picture #3: Block Valve BV-18, observed in close position with chain and lock.



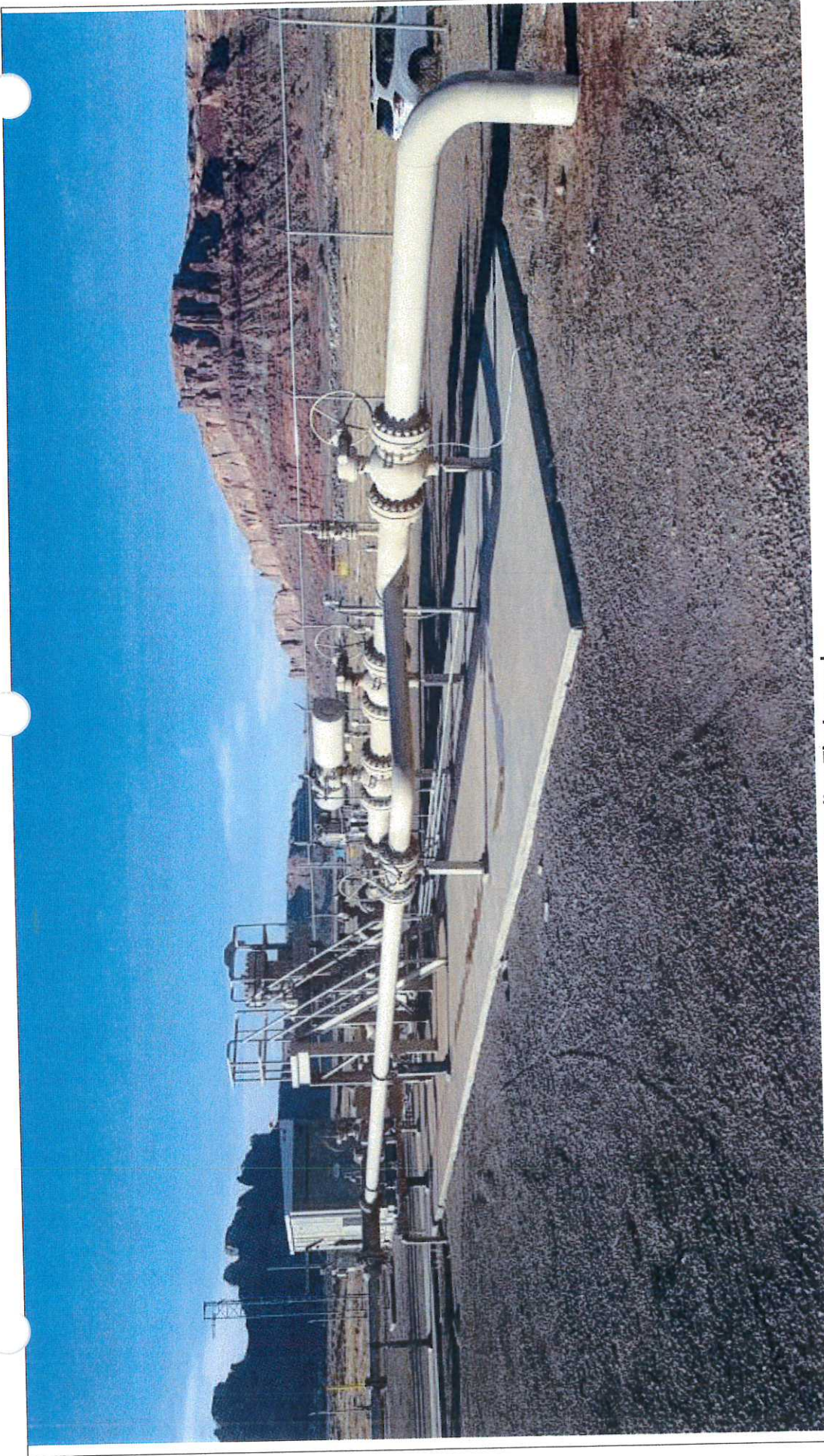
Picture #4: Block Valve BV-20 and BV-19 (vent), observed close position with chain and lock.



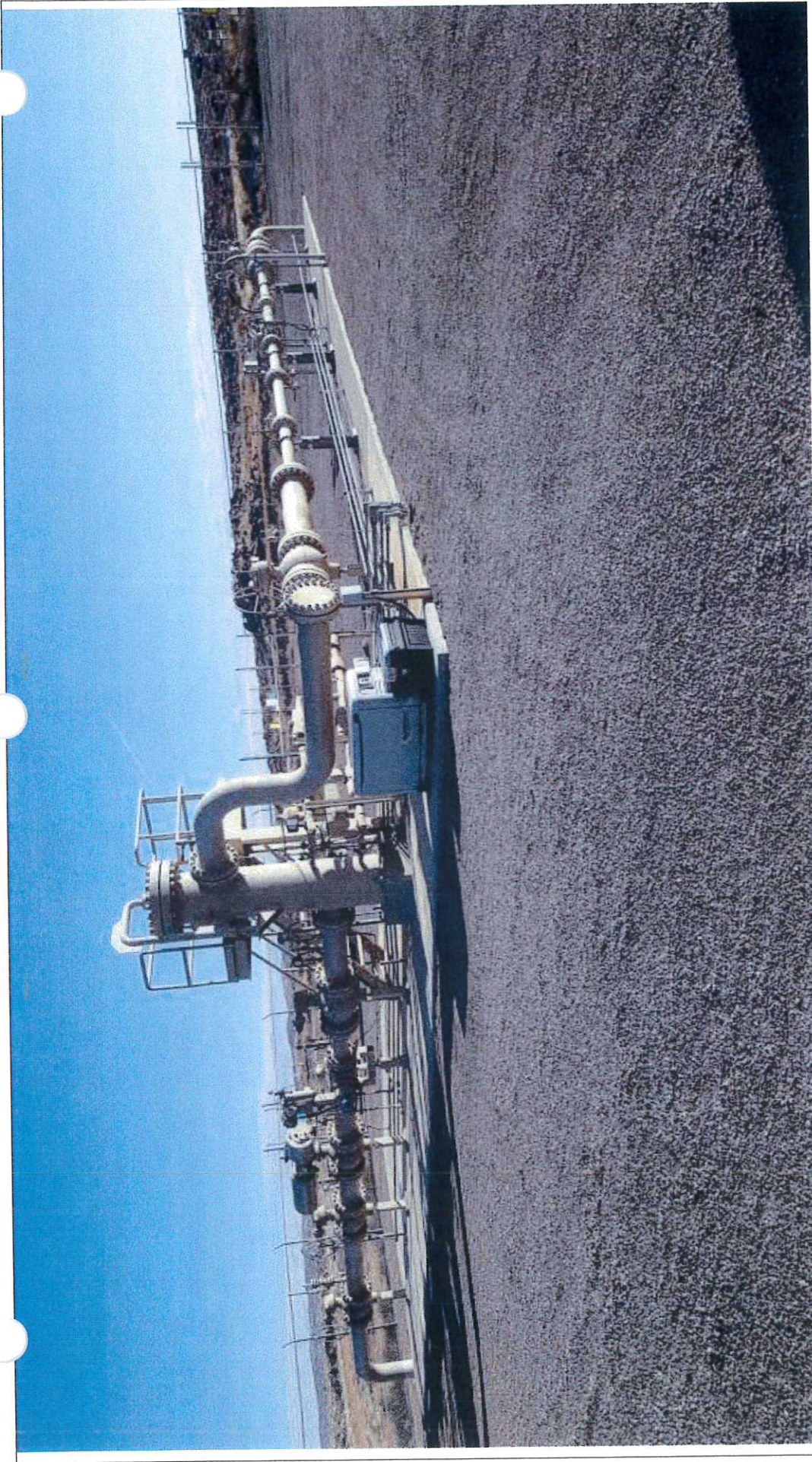
Picture #5: Block Valve BV-19 (Blowdown Vent), observed in close position.



Picture #6: Gauge Pressure, observed above 300 psig.



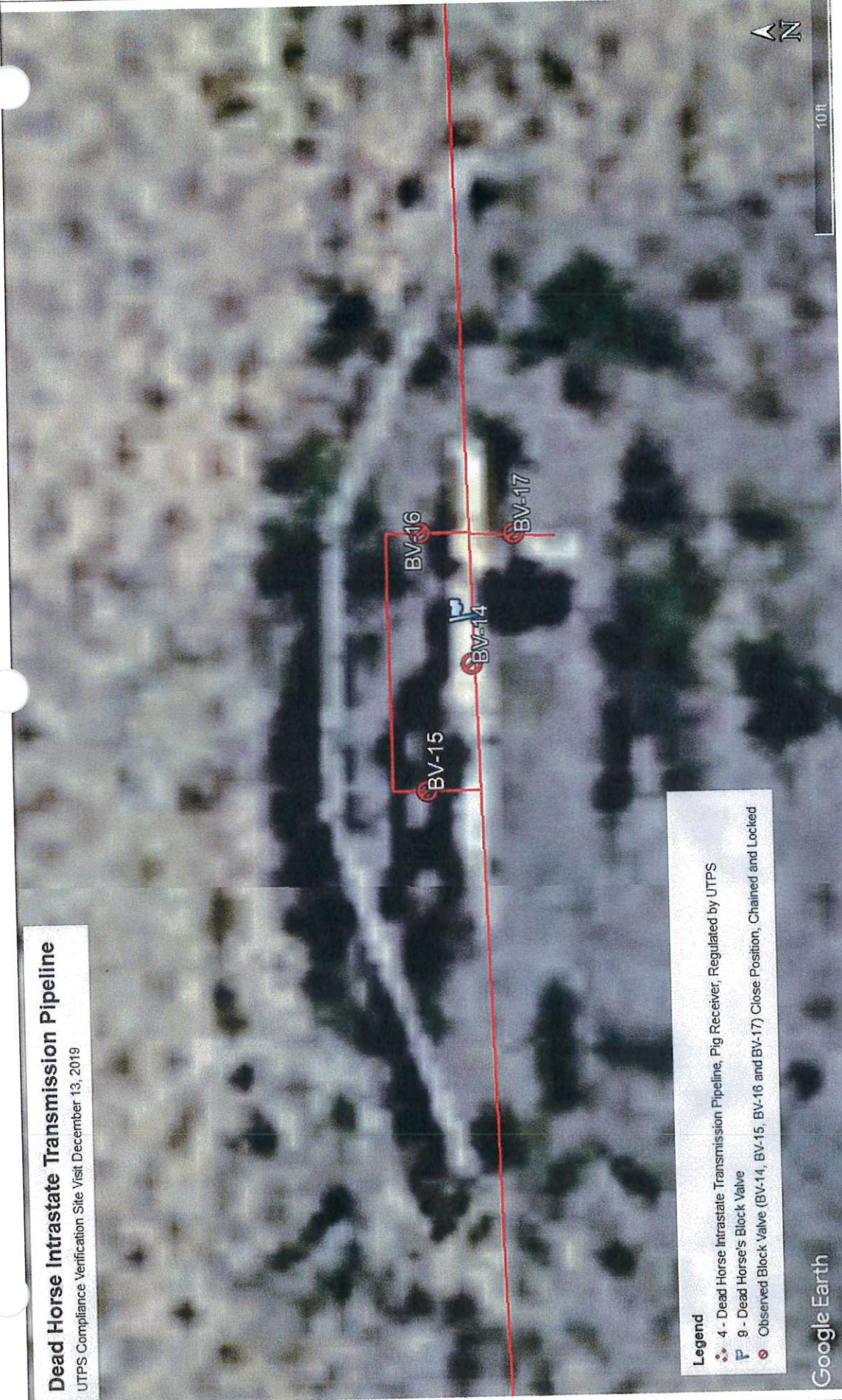
Picture #7: Aboveground piping in the Northwest William Pipeline Tie-In yard.






Picture #8: Aboveground piping in the Northwest William Pipeline Tie-In yard.

Dead Horse Intrastate Transmission Pipeline

UTPS Compliance Verification Site Visit December 13, 2018



Legend

-  4 - Dead Horse Intrastate Transmission Pipeline, Pig Receiver, Regulated by UTPS
-  P - Dead Horse's Block Valve
-  9 - Observed Block Valve (BV-14, BV-15, BV-16 and BV-17) Close Position, Chained and Locked

Google Earth

© 2018 Google

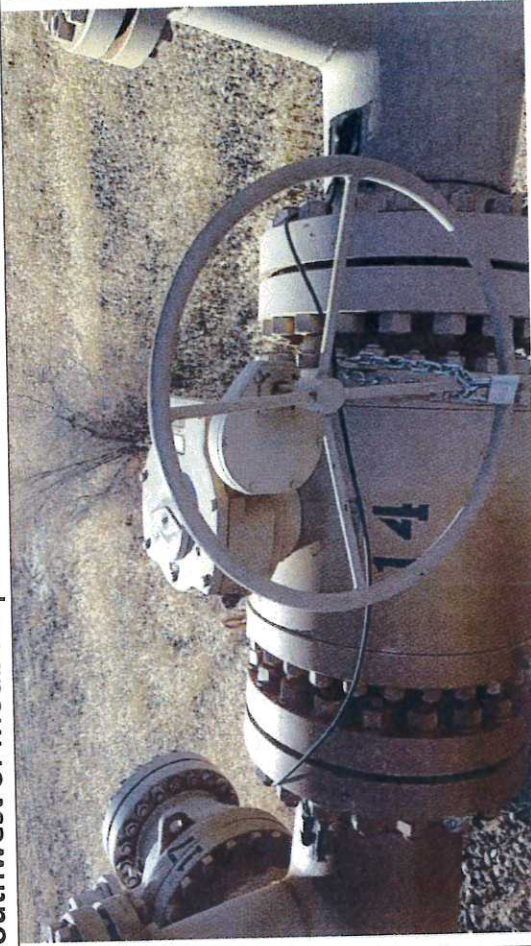
UTPS Site Visit on December 13, 2019: Block Valve Assembly southwest of Moab Airport.



Picture #9: Block Valve assembly BV-14, BV-15, BV-16, and BV-17.



Picture #11: Block Valve BV-17, observed in close position with chain and lock.



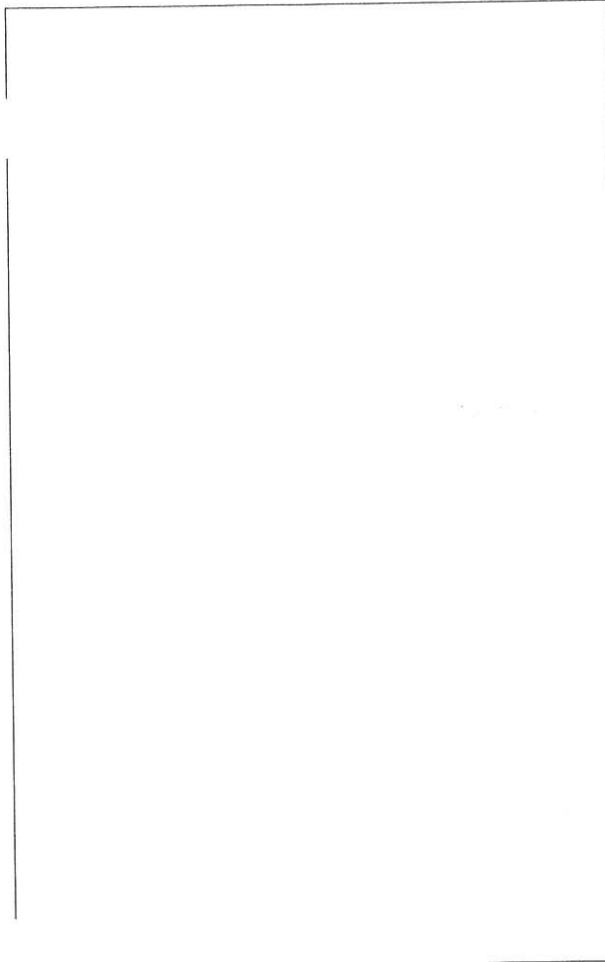
Picture #10: Block Valve BV-14, observed in close position with chain and lock.



Picture #12: Block Valve BV-15, observed in close position with chain and lock.

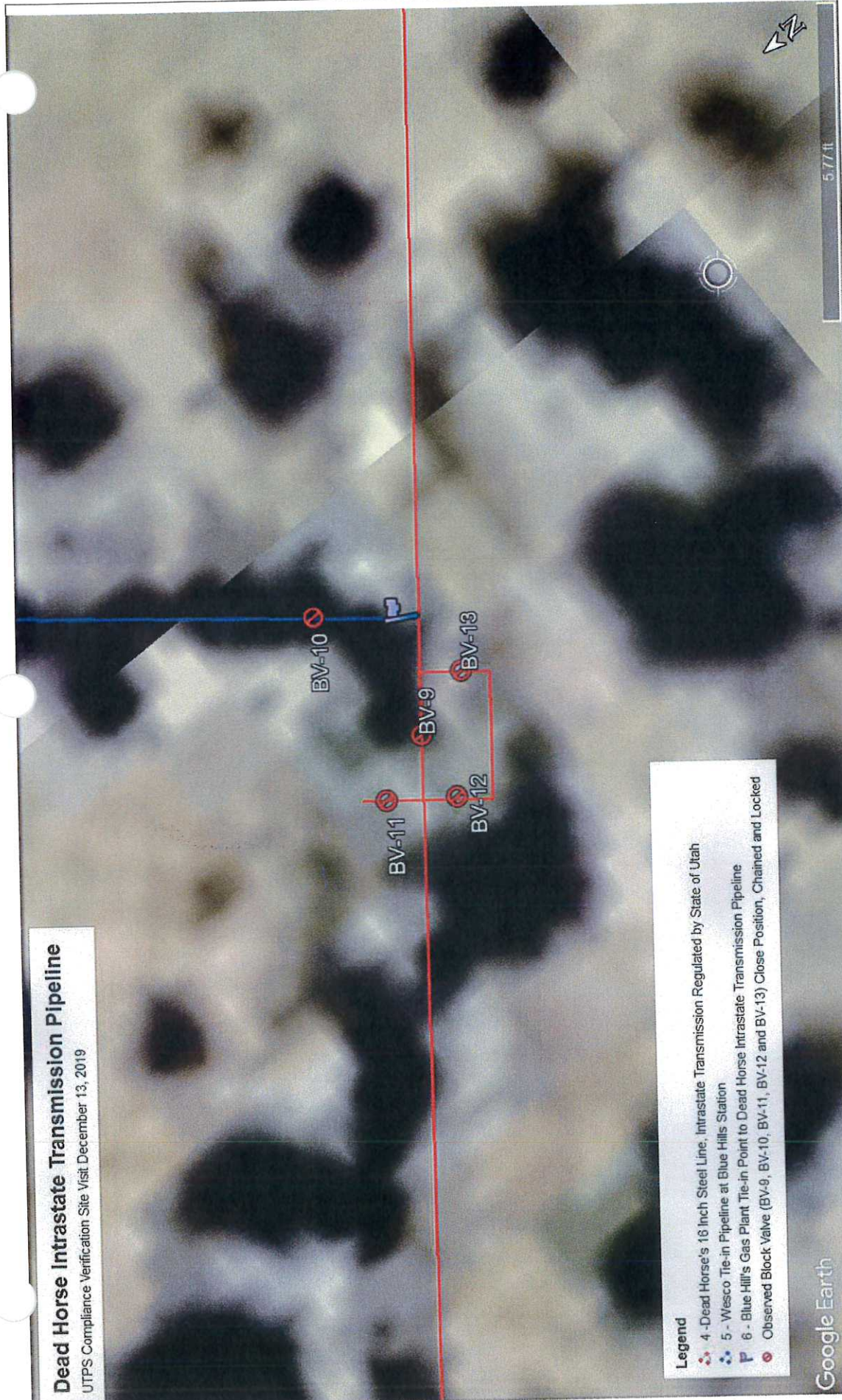


Picture #13 Block Valve BV-16, observed in close position with chain and lock.



Dead Horse Intrastate Transmission Pipeline

UTPS Compliance Verification Site Visit December 13, 2019



Legend

- 4 - Dead Horse's 16 Inch Steel Line, Intrastate Transmission Regulated by State of Utah
- 5 - Wesco Tie-in Pipeline at Blue Hills Station
- 6 - Blue Hill's Gas Plant Tie-in Point to Dead Horse Intrastate Transmission Pipeline
- Observed Block Valve (BV-9, BV-10, BV-11, BV-12 and BV-13) Close Position, Chained and Locked

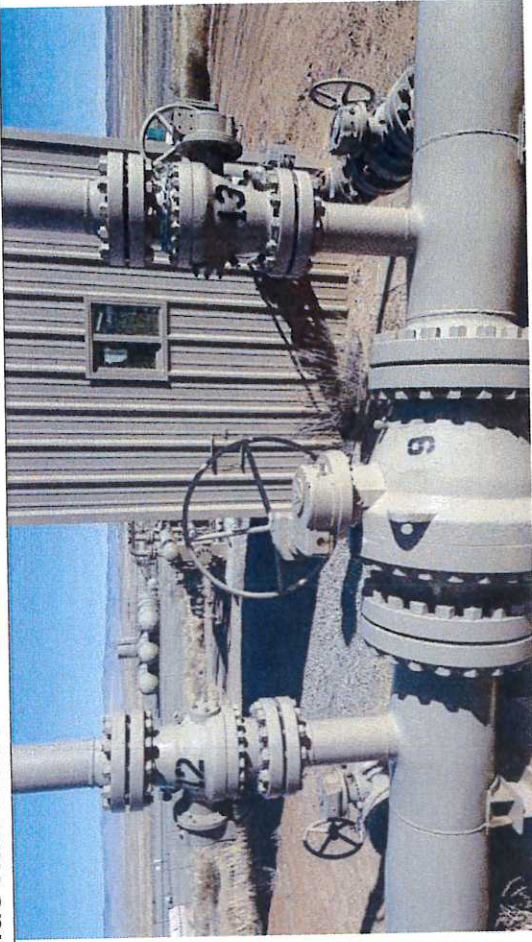
Google Earth

© 2019 Google

UTPS Site Visit on December 13, 2019: Wesco Tie-In Point at Blue Hills Station.



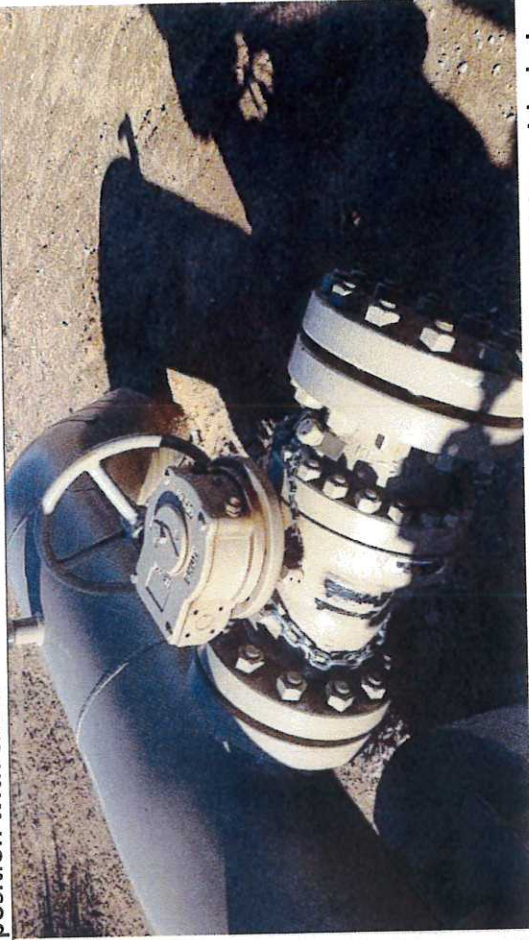
Picture #14: Wesco Tie-In Point at Blue Hills Station.



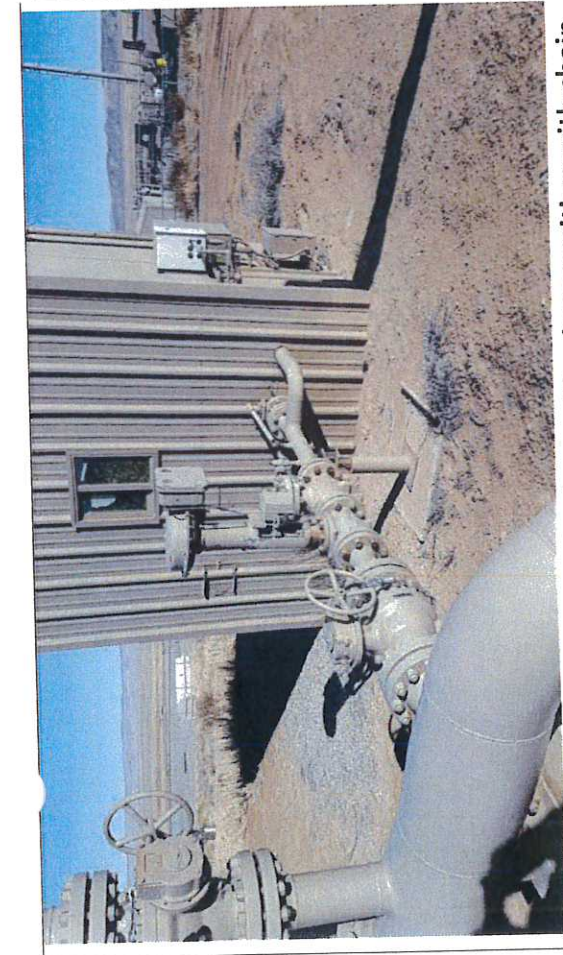
Picture #15: Block Valve BV-9, BV-12 and BV-13 observed in close position with chain and lock.



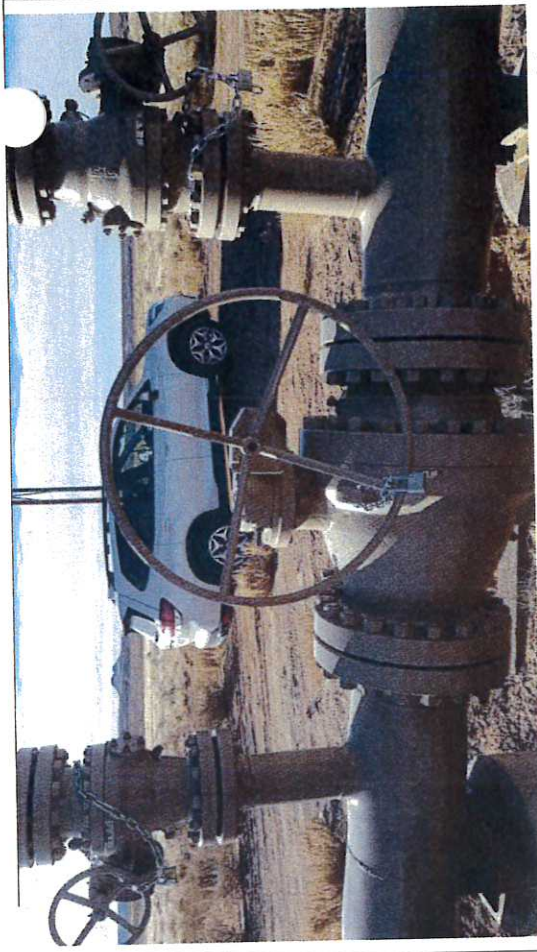
Picture #16: Block Valve BV-10, observed in close position with chain and lock.



Picture #17: Block Valve BV-11, observed in close position with chain and lock.



Picture #18: Block Valve BV-10, observed in close position with chain and lock.



Picture #19: Behind Block Valve BV-9, BV-12 and BV-13, observed in close position with chain and lock.



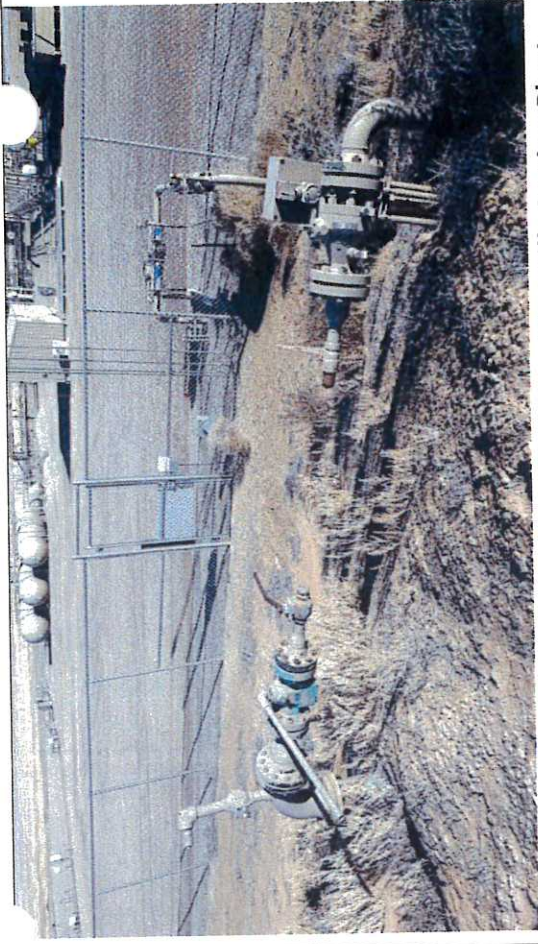
Picture #20: Wesco Gathering Side Pipeline.



Picture #21: Wesco Gathering Side Pipeline.



Picture #22: Wesco Gathering Side Pipeline Gauge Pressure, observed 0 psig.



Picture #23: Wesco Gathering Side Pipeline, Blue Hills Station Plant.

Dead Horse Intrastate Transmission Pipeline

UTPS Compliance Verification Site Visit December 13, 2019

Wesco-Valve
Dead Horse - Valve

Legend

- 4 - Dead Horse's 16 inch Steel Line, Intrastate Transmission Regulated by State of Utah
- 5 - Wesco Tie-in Pipeline at Blue Hills Station
- 6 - Blue Hill's Gas Plant Tie-in Point to Dead Horse Intrastate Transmission Pipeline
- Observed Wesco - Isolation Valve; Close Position
- Observed Dead Horse - Isolation Valve; Open Position

BV-12
BV-9
BV-10

Google Earth

© 2019 Google

30 ft



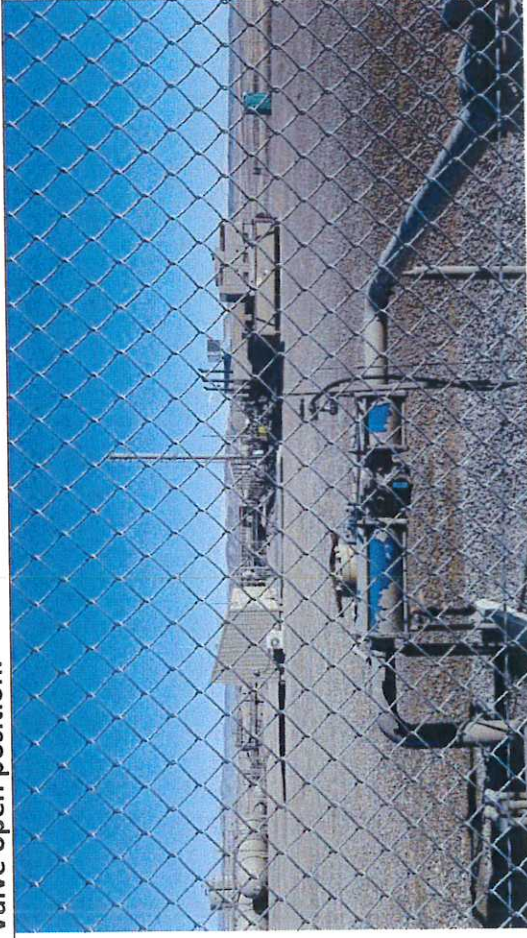
UTPS Site Visit on December 13, 2019: Wesco Compressor at Blue Hills Station.



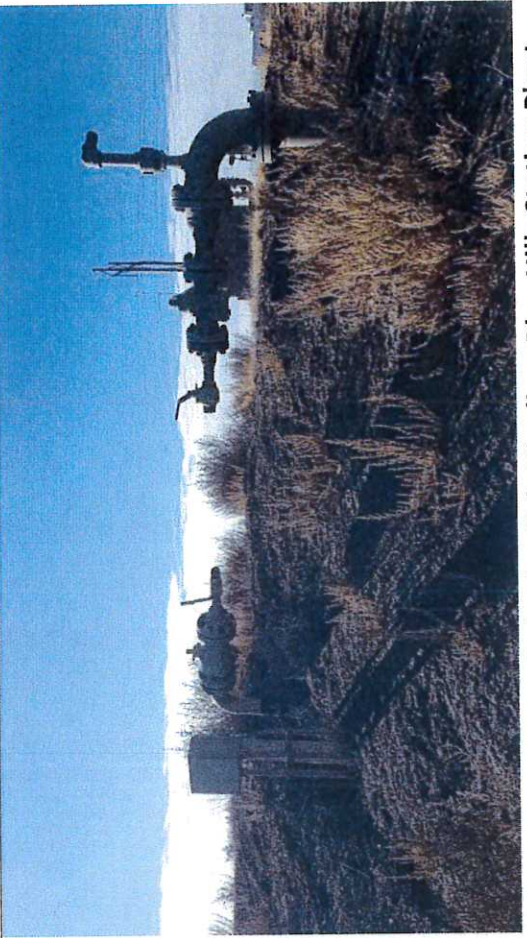
Picture #24: Observe Wesco Compressor Station at Blue Hills, PEMC Valve open position.



Picture #25: Observed Wesco Compressor Station at Blue Hills pressure gauge approximately 0 psig.



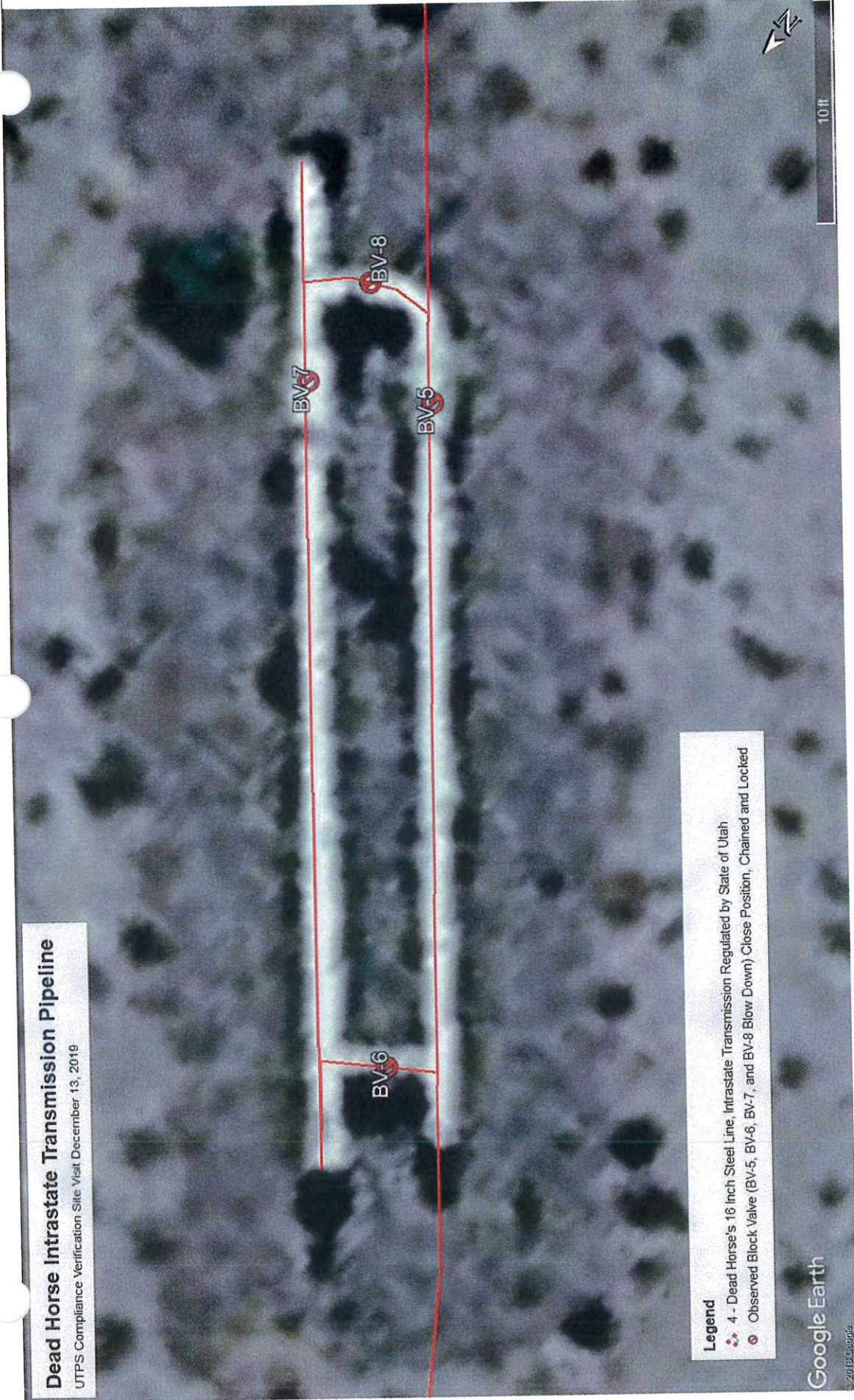
Picture #26: Observed Wesco Compressor Station at Blue Hills, Wesco valve close position.



Picture #27: Wesco Gathering Side Pipeline, Blue Hills Station Plant.

Dead Horse Intrastate Transmission Pipeline

UTPS Compliance Verification Site Visit December 13, 2019



- Legend**
- 4 - Dead Horse's 16 Inch Steel Line, Intrastate Transmission Regulated by State of Utah
 - Observed Block Valve (BV-5, BV-6, BV-7, and BV-8 Blow Down) Close Position, Chained and Locked

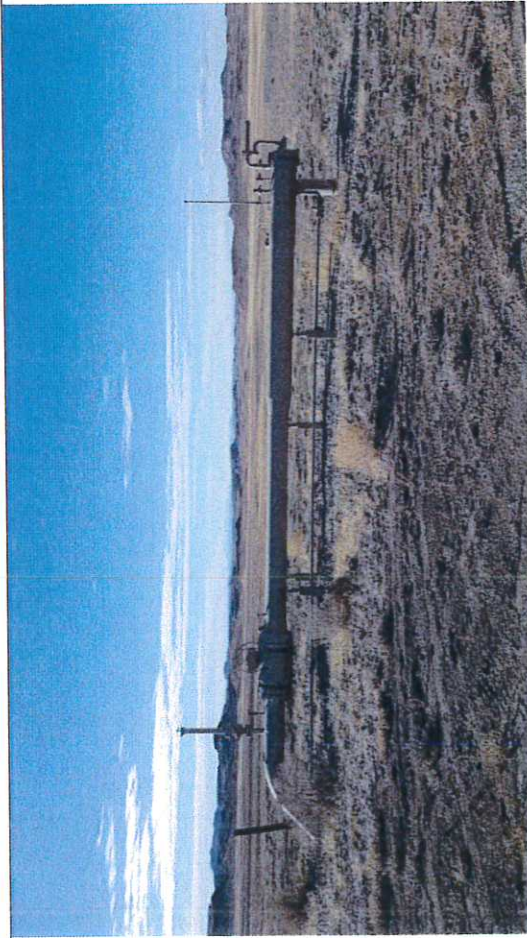
Google Earth

© 2019 Google

10 ft



UTPS Site Visit on December 13, 2019: PEMC Pig Launcher



Picture #28: Observed PEMC pig launcher.



Picture #29: Block Valve BV-7, observed in close position with chain and lock.



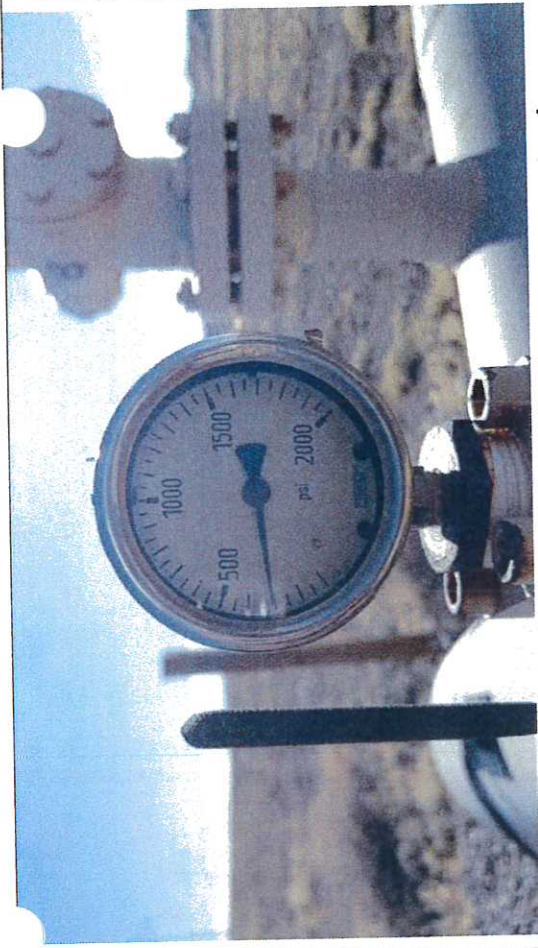
Picture #30: Block Valve BV-6, observed in close position with chain and lock.



Picture #31: Block Valve BV-5, observed in close position with chain and lock.



Picture #32: Block Valve BV-8, observed in close position.



Picture #33: Pressure gauge near BV-7 observed above 300 psig.

Dead Horse Intrastate Transmission Pipeline

UTPS Compliance Verification Site Visit December 13, 2019



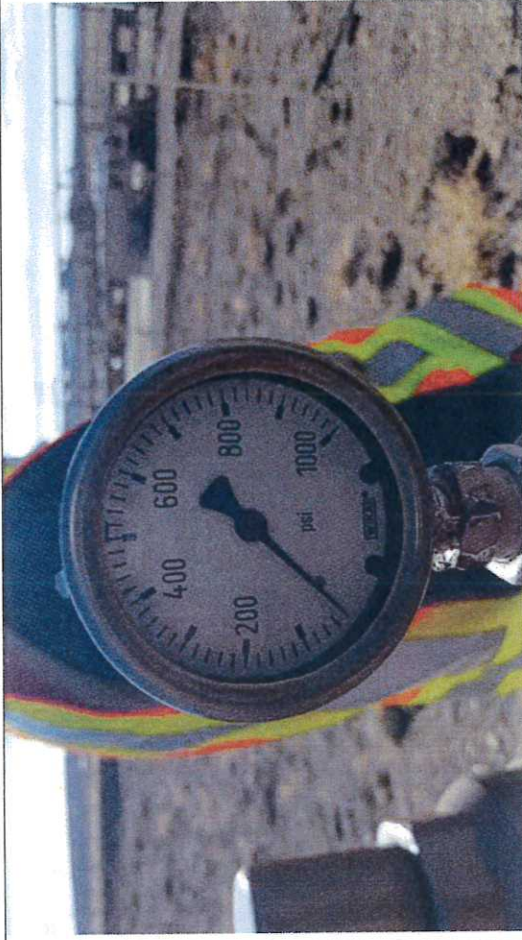
Legend

- 1 - Dead Horse's Gathering System
- 2 - Dead Horse's 16 Inch Steel Line, Intrastate Transmission Regulated by State of Utah
- 3 - Dead Horse's Start of Regulation, Most Downstream Valve at the Processing Plant
- Observed Block Valve (BV-1); Position Undetermined, Station Gate Locked
- Observed Block Valve (BV-2, BV-3 and BV-4); Close Position Chained and Locked

UTPS Site Visit on December 13, 2019: PEMC Compressor Station



Picture #34: Observed valve assembly east of PEMC compressor station.



Picture #35: Pressure gauge near BV-2 on the transmission side, approximately 0 psig.



Picture #36: Observed PEMC compressor station with BV-1, position undetermined. Did not access station because it was locked.



Picture #37: Observed PEMC compressor station exposed piping near the east fence.



Picture #38: Block Valve BV-3, observed in close position with chain and lock.



Picture #39: Block Valve BV-2, observed in close position with chain and lock.



Picture #40: Block Valve BV-4, observed in close position with chain and lock.



Picture #41: PEMC compressor station.