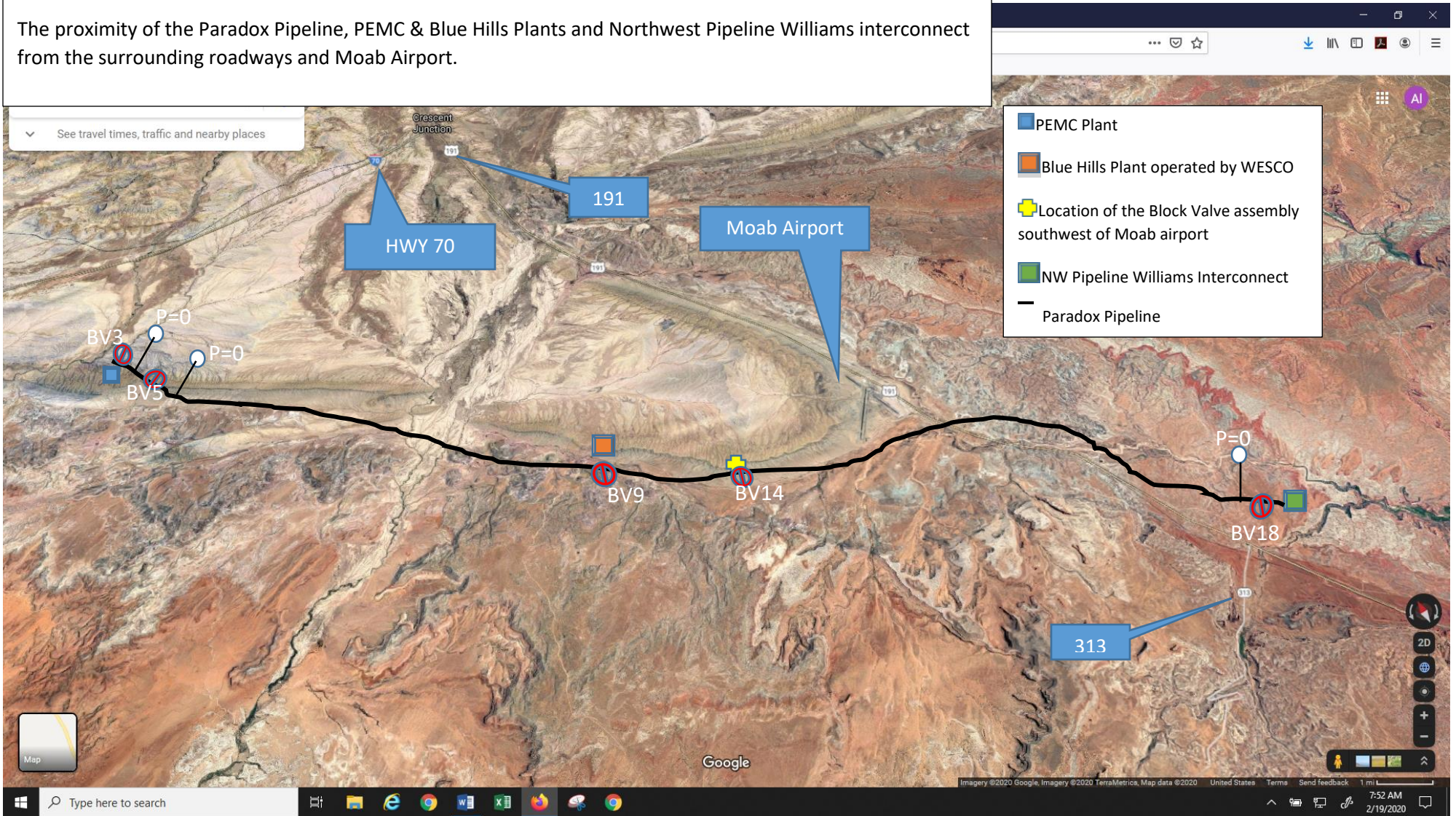


Paradox Pipeline Site Visit on February 12 & 13, 2020 concerning the PSC January 31, 2020 order in Docket No. 18-2602-01

The proximity of the Paradox Pipeline, PEMC & Blue Hills Plants and Northwest Pipeline Williams interconnect from the surrounding roadways and Moab Airport.

ATTACHMENT B



There is no Pressure gauge between BV#s 9 and 14 for verifying the pressure inside the pipeline in this section.

ATTACHMENT B

Paradox Pipeline Site Visit on February 12 & 13, 2020 concerning the PSC January 31, 2020 order in Docket No. 18-2602-01

The Proximity of PEMC plant to the surrounding roads.



ATTACHMENT B

Paradox Pipeline Site Visit on February 12 & 13, 2020 concerning the PSC January 31, 2020 order in Docket No. 18-2602-01

The valve assembly and pig launcher receiver piping outside of PEMC Plant.



The Block Valves (BV)#s 3 and 5 and Valves (V)#s 2, 4, 6, 7 and 8 were chained and locked in the closed position and the pressure gauges next to BV#3 and V#7 were pointing to zero mark. See Pictures #1 to 12 below.

ATTACHMENT B



Picture #1. The piping north of PEMC plant: BV#3, and V#s 2 and 4.



P2. The piping north of PEMC plant: BV#3, and V#s 2 and 4.



P3. BV#3 - Chained and locked in closed position.



P4. Top of BV#3 indicated closed position.

ATTACHMENT B



P5. V#2 - Chained and locked in closed position.



P6. Pressure gauge next to BV#3.



P7. The pig launcher/receiver east of the PEMC plant.



P8. BV#5, and V#s 7 and 8 – Chained and locked in closed position.

ATTACHMENT B



P9. Pressure gauge next to V#7.



P10. Pressure gauge next to V#7.



P11. V#7 and vent valve #8 – Chained and locked in closed position.

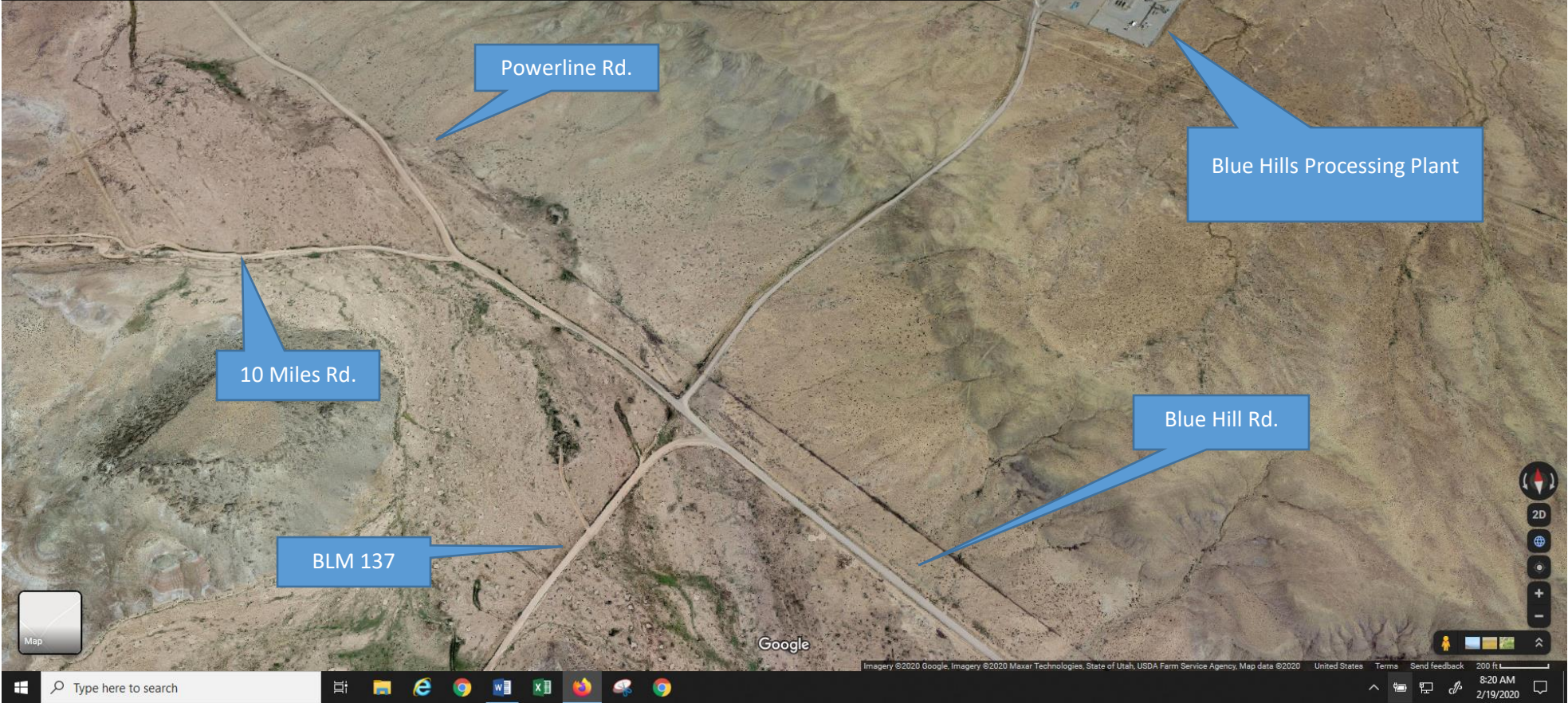


P12. V#6 – Chained and locked in closed position.

ATTACHMENT B

Paradox Pipeline Site Visit on February 12 & 13, 2020 concerning the PSC January 31, 2020 order in Docket No. 18-2602-01

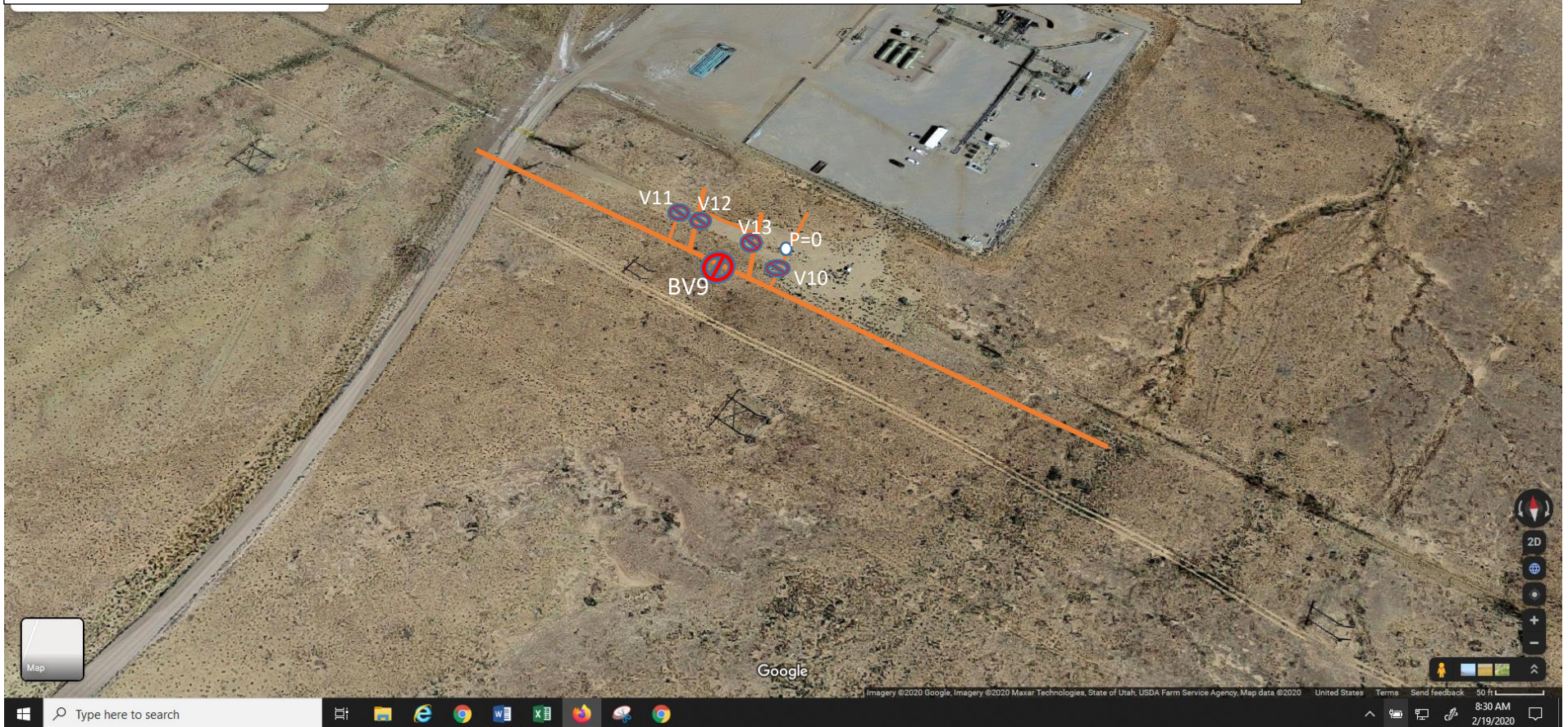
The proximity of Blue Hills Processing Plant to the surrounding roads.



ATTACHMENT B

Paradox Pipeline Site Visit on February 12 & 13, 2020 concerning the PSC January 31, 2020 order in Docket No. 18-2602-01

The valve assembly outside WESCO Processing Plant.



The BV#9; vent V#s 12 and 13; inlet/outlet V#s 10, and 11 were all chained and locked in the closed position. There was a pressure gauge by the regulator next to V#10 indicating zero pressure. However, there was not a pressure gauge on the carrier pipeline to verify pressure between BV #s 9 and 14. See pictures #13 to 18 below.

ATTACHMENT B



P13. Valve assembly outside Blue Hills Plant.



P14. BV#9 and V#s 12 & 13 – Chained and locked in closed position.



P15. V#10 – Chained and locked in closed position.



P16. BVs #9, and V#s 10, 11, 12, & 13 – Chained and locked in closed position.

ATTACHMENT B



P17. V#11 – Chained and locked in closed position.

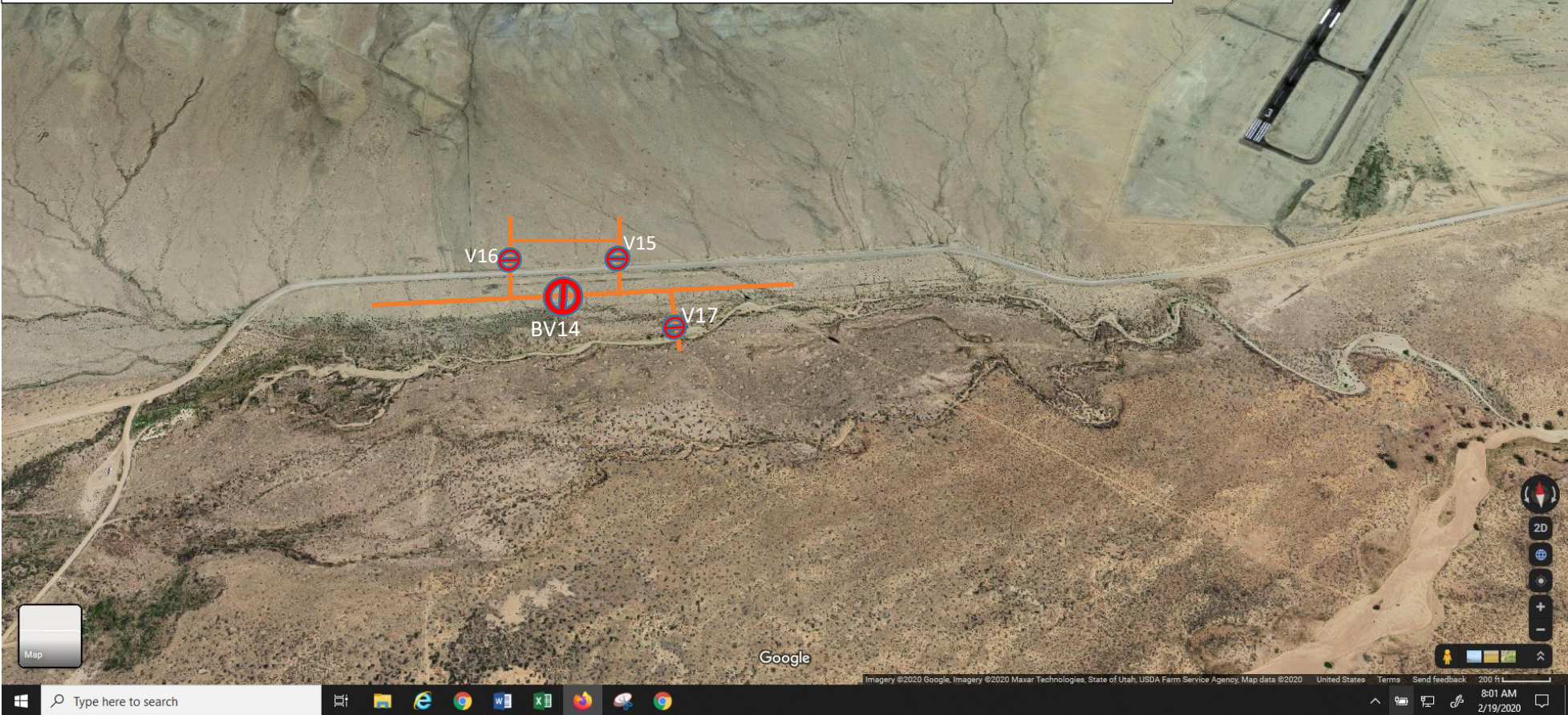


P18. Pressure gauges next to V#10 – indicating zero pressure.

ATTACHMENT B

Paradox Pipeline Site Visit on February 12 & 13, 2020 concerning the PSC January 31, 2020 order in Docket No. 18-2602-01

The Block Valve assembly southwest of Moab airport



The BV #14 and two vent V#15 & 16, and V#17 were all observed to be chained and locked in the closed position. There was not a pressure gauge at this location. The pressure inside the carrier pipeline between BV#14 and BV#9 could not be verified due to lack of a pressure gauge for this section. See pictures #19 to 24 below.

ATTACHMENT B



P19. Block valve assembly southwest of the Moab airport.



P20. BV#14, and V#s 15, 16 & 17 – Chained and locked in closed position.



P21. Valve position indicator on BV#14 shows closed position.



P22. Valve position indicator on V#15 shows closed position.

ATTACHMENT B



P23. Valve position indicator on BV#16 shows closed position.



P24. V#17 in closed position.

ATTACHMENT B

Paradox Pipeline Site Visit on February 12 & 13, 2020 concerning the PSC January 31, 2020 order in Docket No. 18-2602-01

The proximity of the NW Pipeline Williams to the county roads 191 and 313.



ATTACHMENT B

Paradox Pipeline Site Visit on February 12 & 13, 2020 concerning the PSC January 31, 2020 order in Docket No. 18-2602-01

The pig launcher receiver and valves assembly piping outside of the NW Pipeline Williams yard.



The BV#18 and V#s 19, 20 & 21 were chained and locked in the closed position and the pressure gauge next to V#20 was pointing to zero mark. See pictures #25 to 30 below.

ATTACHMENT B



P25. Piping assembly north of NW Williams yard.



P26. BV# 18 and V#s 19, 20 & 21 – Chained and locked in closed position.



P27. BV#18 – Chained and locked in closed position.



P28. V#20 – Chained and locked in closed position.

ATTACHMENT B



P29. V#19 – Chained and locked in closed position.



P30. Pressure gauge next to V#20 – indicates zero pressure.