

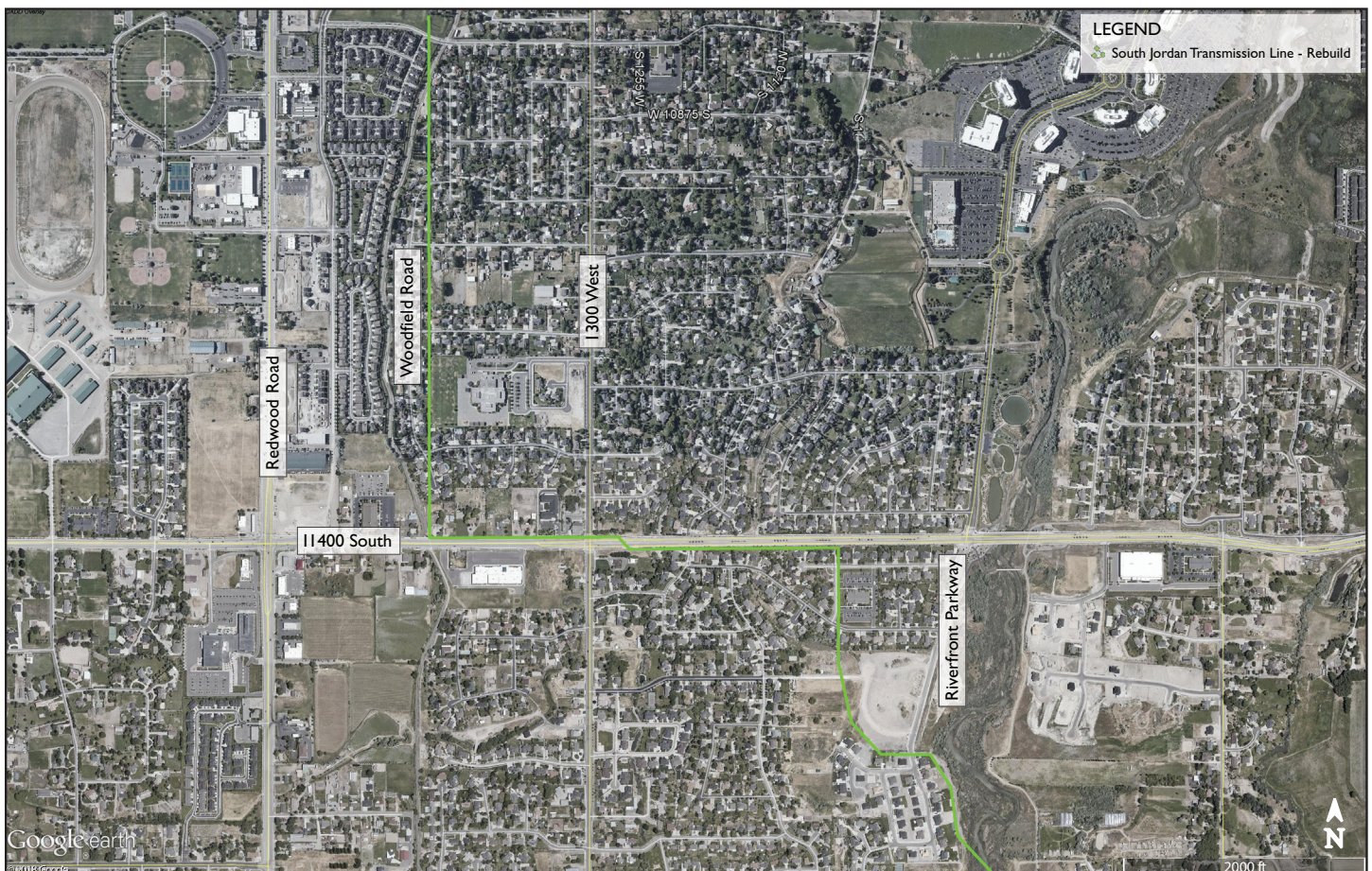
South Jordan to Draper transmission upgrade project

As part of Rocky Mountain Power's commitment to provide safe, reliable and efficient energy to our customers, we're planning a transmission upgrade project to provide additional capacity and improve electric service reliability to meet power requirements for your area.

Project purpose and need

Demand for electricity in the South Valley area of Salt Lake County has exceeded the capacity of some of the electric power facilities and needs to be rebuilt. The South Valley area has grown 1.5 percent per year over the last five years — and state projections put Salt Lake County's population at approximately 1.7 million people by 2040, an increase of nearly 70 percent over 2010.

This project will improve service for existing customers and provide capacity to serve current and future demand for electricity in this area.



About the project

Rocky Mountain Power plans to rebuild the existing power line from approximately 10700 South and 1400 West following the existing line until it crosses the Jordan River at approximately 11800 South. The upgrade will include new, taller, poles and wire. The project allows for the upgrade of substations and will allow the lines to serve more electrical power to the area.

Project description and phasing

To meet the growing needs of customers, this project must be in service to customers in May 2020, prior to the summer peak energy use.

The upgraded transmission lines and substation will have direct benefits to local customers and the entire area.

The project was anticipated by the Salt Lake County Electrical Plan, which was developed in consultation with area business, government and community leaders in September 2010 and has been presented to all planning commissions in the region.

This is a multi-year plan that is expected to continue during the coming years. As customer needs change, plans to upgrade the electric infrastructure will be adjusted to meet demand.

Notice will be provided if a planned electrical power service interruption occurs as part of this work.

Contact information

Have a question or comment about this project?

Call us at **801-220-4221** or send us an email at **constructionprojects@pacificorp.com**.

You can find more information online at our website: **rockymountainpower.net/transmission**.

PROJECT SCHEDULE

- **Spring 2019 - Spring 2020**
Construction begins
- **May 2020**
In-service date