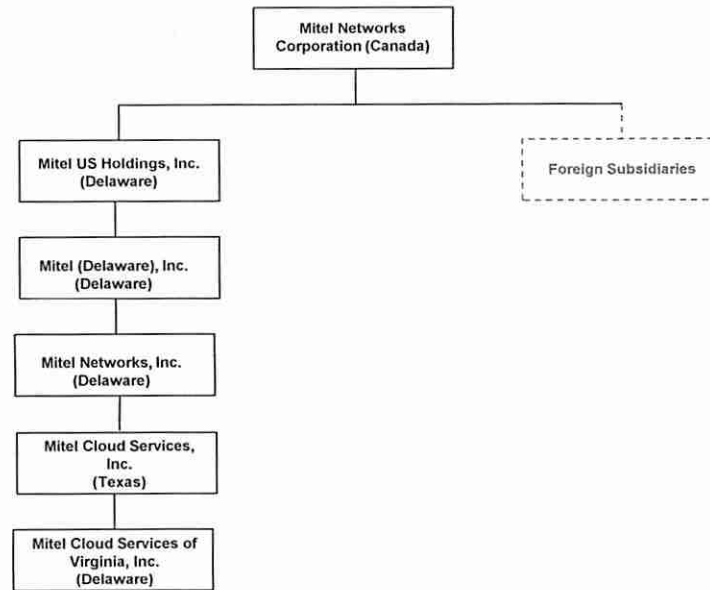


EXHIBIT A

Docket No. 18-2480-02

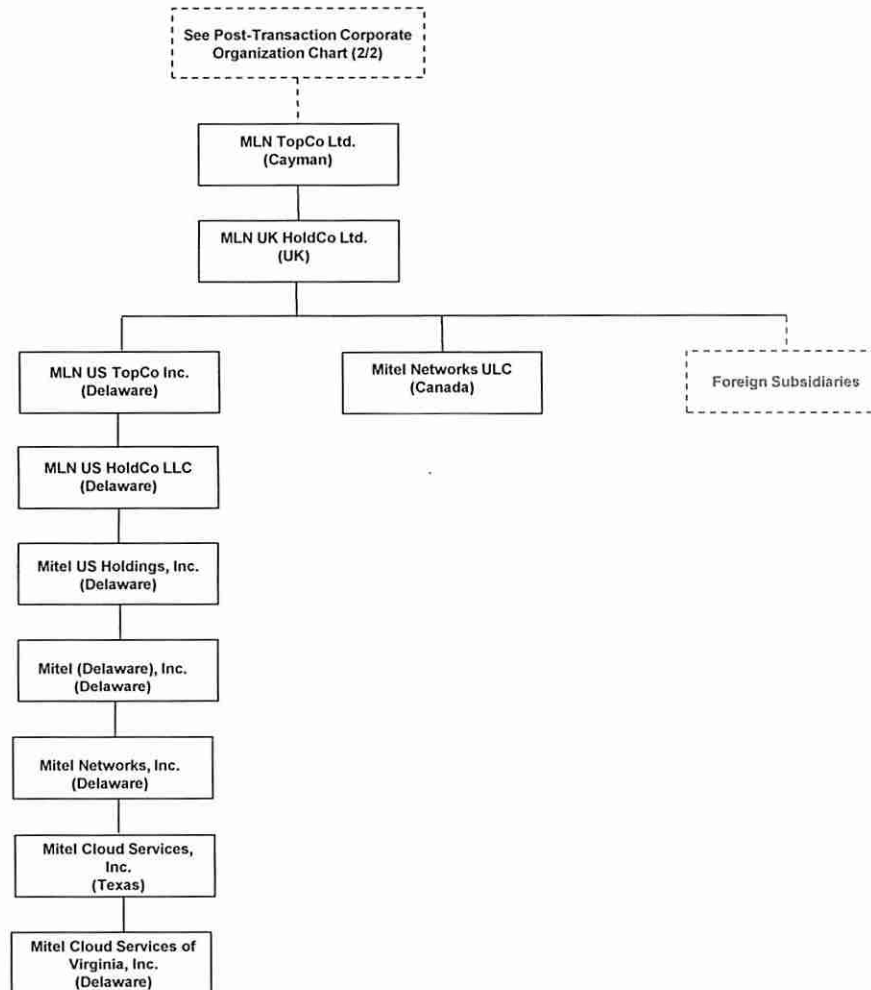
Pre- and Post-Transaction Corporate Ownership Structures

Pre-Transaction Corporate Organization Chart



* All solid lines in this chart represent 100% ownership. The entities listed herein only include entities that (1) hold authorization to provide intrastate, interstate or international telecommunications services in the United States or (2) hold a 10% or greater direct or indirect ownership interest in the chain of ownership of those entities, based on FCC ownership attribution rules. The chart excludes subsidiaries and affiliates of MLN TopCo Ltd. that do not hold authorization to provide telecommunications services in the United States.

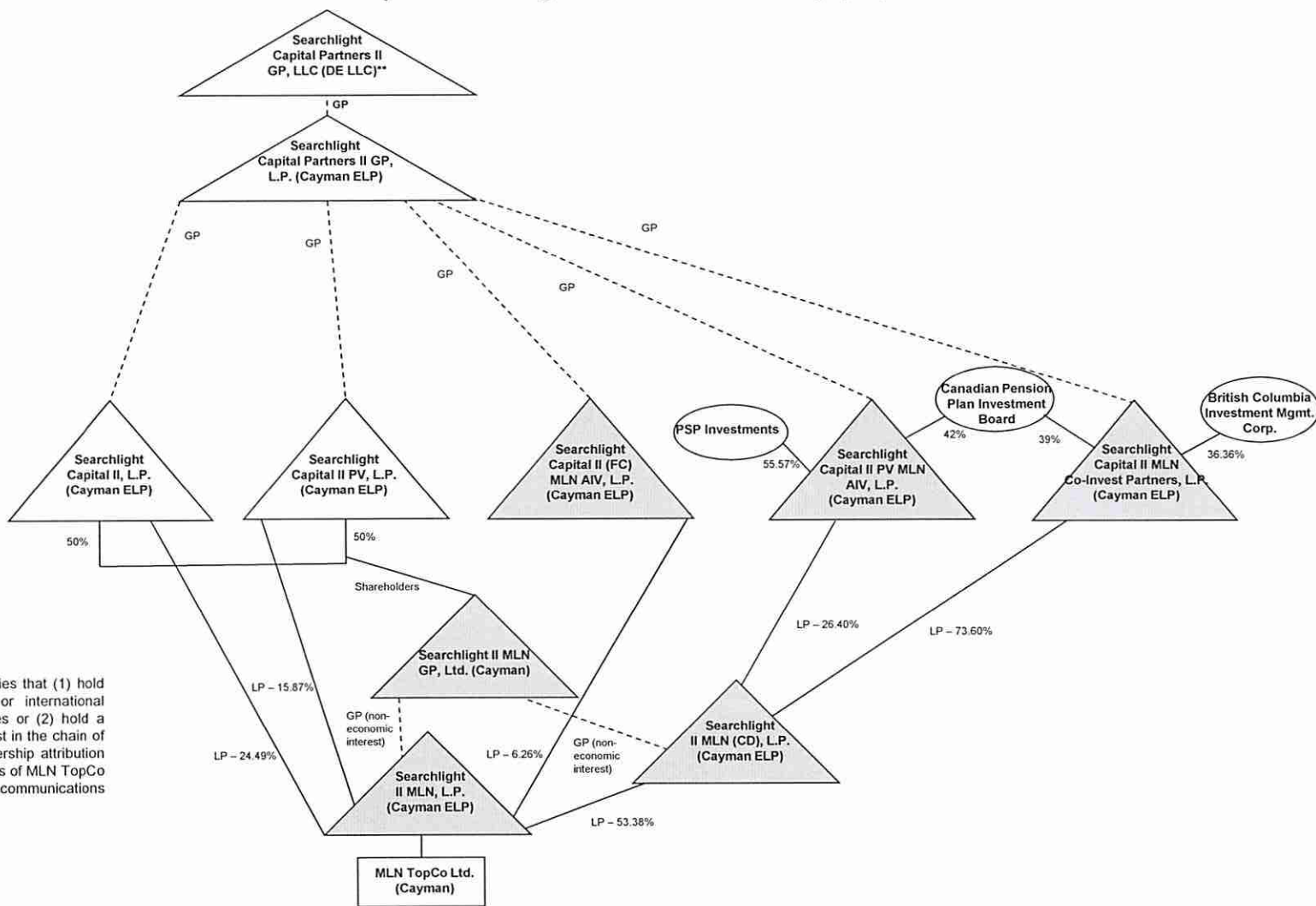
Post-Transaction Corporate Organization Chart (1/2)



* All solid lines in this chart represent 100% ownership. The entities listed herein only include entities that (1) hold authorization to provide intrastate, interstate or international telecommunications services in the United States or (2) hold a 10% or greater direct or indirect ownership interest in the chain of ownership of those entities, based on FCC ownership attribution rules. The chart excludes subsidiaries and affiliates of MLN TopCo Ltd. that do not hold authorization to provide telecommunications services in the United States.

Post-Transaction Corporate Organization Chart (2/2)

Key:
 - - - - = general partner interest



* The entities listed herein only include entities that (1) hold authorization to provide intrastate, interstate or international telecommunications services in the United States or (2) hold a 10% or greater direct or indirect ownership interest in the chain of ownership of those entities, based on FCC ownership attribution rules. The chart excludes subsidiaries and affiliates of MLN TopCo Ltd. that do not hold authorization to provide telecommunications services in the United States.