



OLENE S. WALKER
Governor
GAYLE F. McKEACHNIE
Lieutenant Governor

State of Utah
Department of
Environmental Quality

Dianne R. Nielson, Ph.D.
Executive Director
DIVISION OF DRINKING WATER
Kevin W. Brown, P.E.
Director

Drinking Water Board
Dale Pierson, Chair
Anne Erickson, Vice-Chair
Myron Baumgardner
Jay Franson
Laurie McNeill
Nancy Melich
Dianne R. Nielson, Ph.D.
Charlie Roberts
Petro Russ
Ron Thompson
Chris Webb
Kevin W. Brown, P.E.
Executive Secretary

September 21, 2004

Joe Steed
South Duchesne Culinary Water, Inc.
P.O. Box 358
Duchesne, Utah 84021

Dear Mr. Steed:

Subject: Plan Approval for Phase 3 Water Line Project (System #07067,
File #06553)

On September 10, 2004, the Division of Drinking Water (DDW) received revised plans and specifications from your consultant, Daren Anderson with Engineering Services. The DDW has reviewed the technical specifications and plans to verify compliance with applicable portions of R309 of the Utah Administrative Code (UAC). The plans and specifications basically comply with applicable portions of R309 of the Utah Administrative Code (UAC) and are hereby approved.

Written approval, or an Operating Permit, must be obtained from the Executive Secretary prior to placing this project into operation, as outlined in R309-500-9. Local or county approvals/permits may also be necessary before beginning construction of this project. As the project proceeds, any changes in the approved design or affecting the quality or quantity of the delivered water must be forwarded to my staff. My staff may also conduct interim and final inspections to ascertain compliance with the approved drawings. Please notify my staff when the actual construction begins so these inspections can be scheduled.



Joe Steed
Page 2
September 21, 2004

If you have any questions or need further assistance, please call either James Brough or Bill Birkes, of my staff, at (801) 536-4150 or (801) 536-4201, respectively.

Sincerely,

DRINKING WATER BOARD



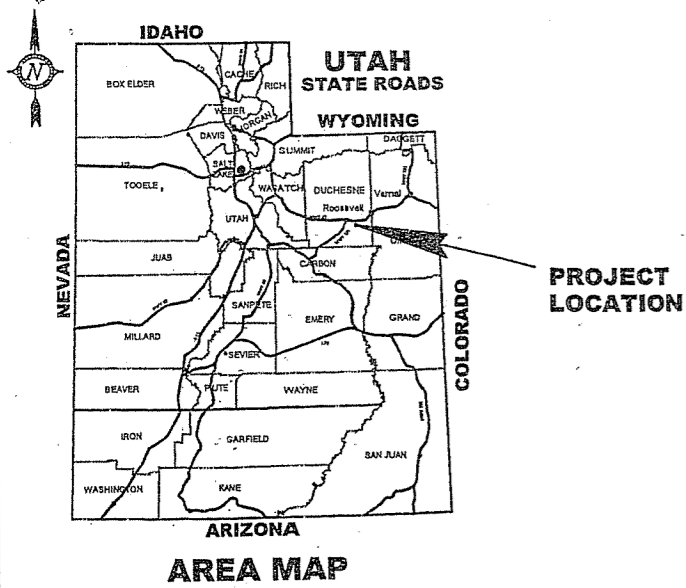
Kevin W. Brown, P.E.
Executive Secretary

JSB

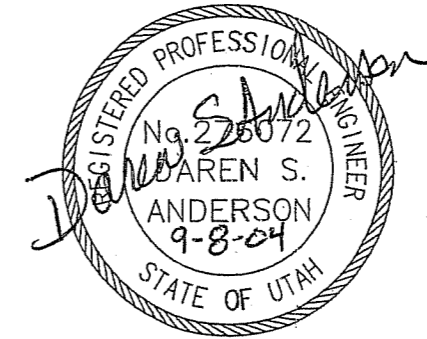
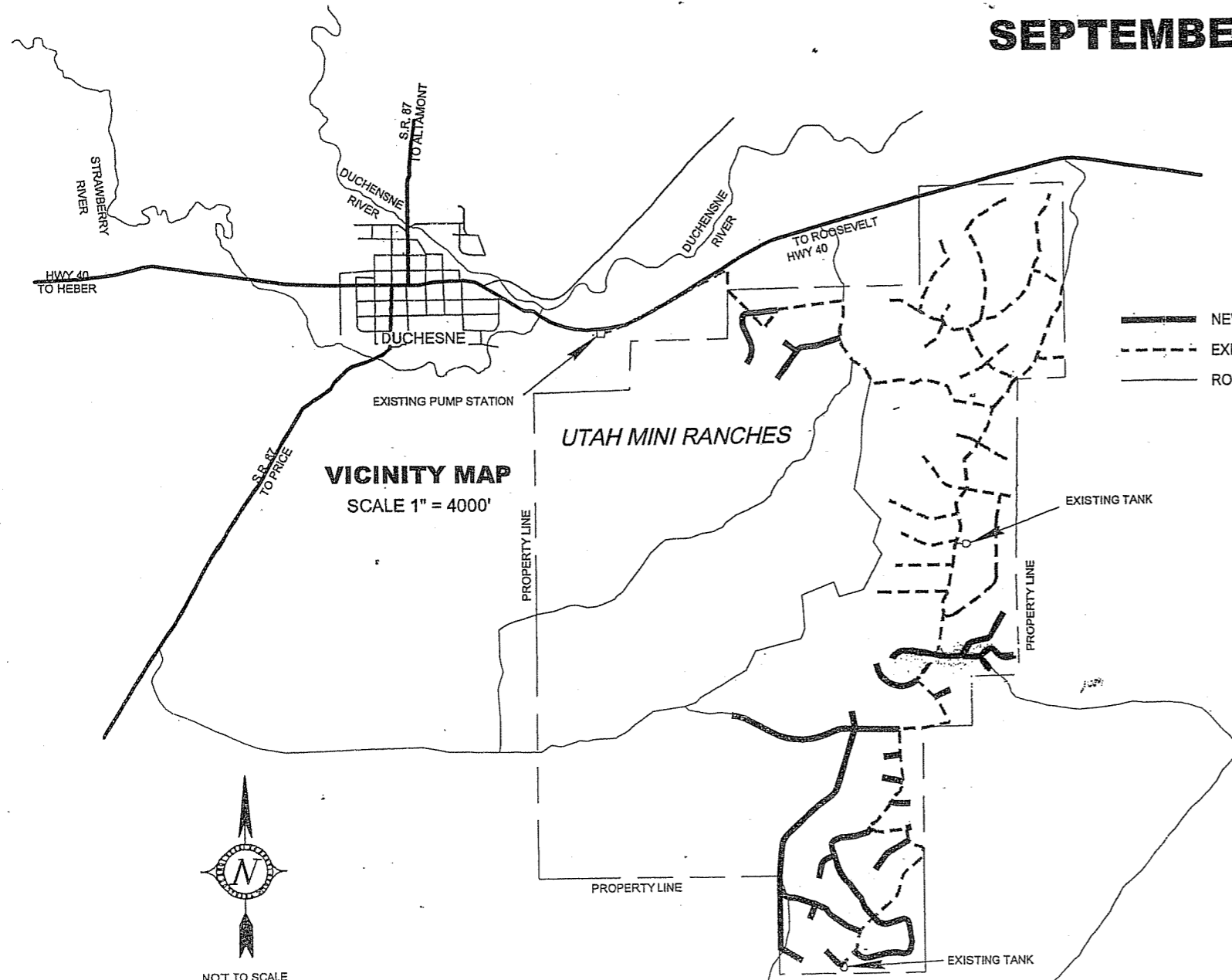
cc: Daren Anderson, P.E., Engineering Services, P.O. Box 1485, Vernal, Utah 84078
Dan Landers, South Duchesne Culinary Water, P.O. Box 294, Duchesne, UT 84021
Mayor Clinton Park, Duchesne City, P.O. Box 974, Duchesne, UT 84021
Darrin Brown, Tri-County Health Department

UTAH MINI RANCHES PHASE 3 WATER LINE

SOUTH DUCHESNE CULINARY WATER, INC.

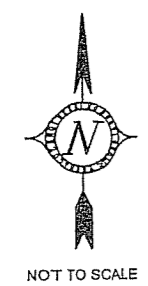


SEPTEMBER 2004

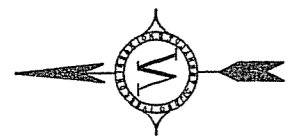
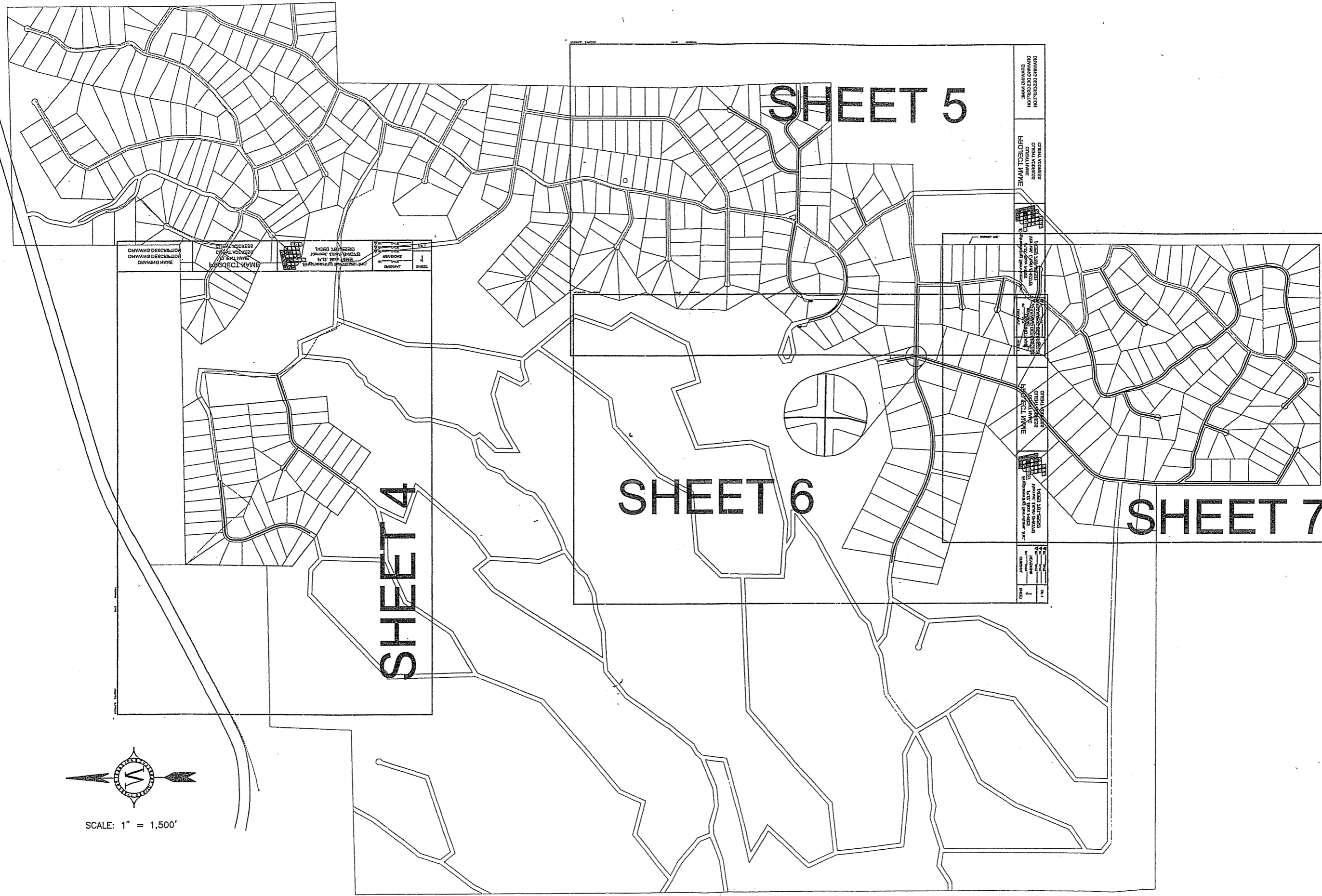


INDEX TO DRAWINGS	
SHEET NO.	DESCRIPTION
1	COVER
2	PROJECT MAP AND SHEET INDEX
3	WATER LINE DETAILS
4-7	PHASE 3 WATER LINE PLAN

SHEET	1	OF 7
ORIGINAL	BY: PAH DATE: 8/25/04	REVISIONS
		BY: DATE
		BY: DATE
		BY: DATE
Engineering Services, Inc. P.O. Box 1485 Vernal, Utah 84078 (435) 781-2550		
UTAH MINI RANCHES PHASE 3 WATER LINE SOUTH DUCHESNE CULINARY WATER DUCHESNE, UTAH 84021		
COVER		



NOT TO SCALE



SCALE: 1" = 1,500'

DATE	8/26/04
BY	AW
CHECKED	AW
PROJECT NAME	UTAH MINI RANCHES PHASE 3 WATERLINE
DRAWING DESCRIPTION	WATERLINE LAYOUT

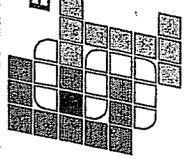
DATE	8/26/04
BY	AW
CHECKED	AW
PROJECT NAME	UTAH MINI RANCHES PHASE 3 WATERLINE
DRAWING DESCRIPTION	WATERLINE LAYOUT

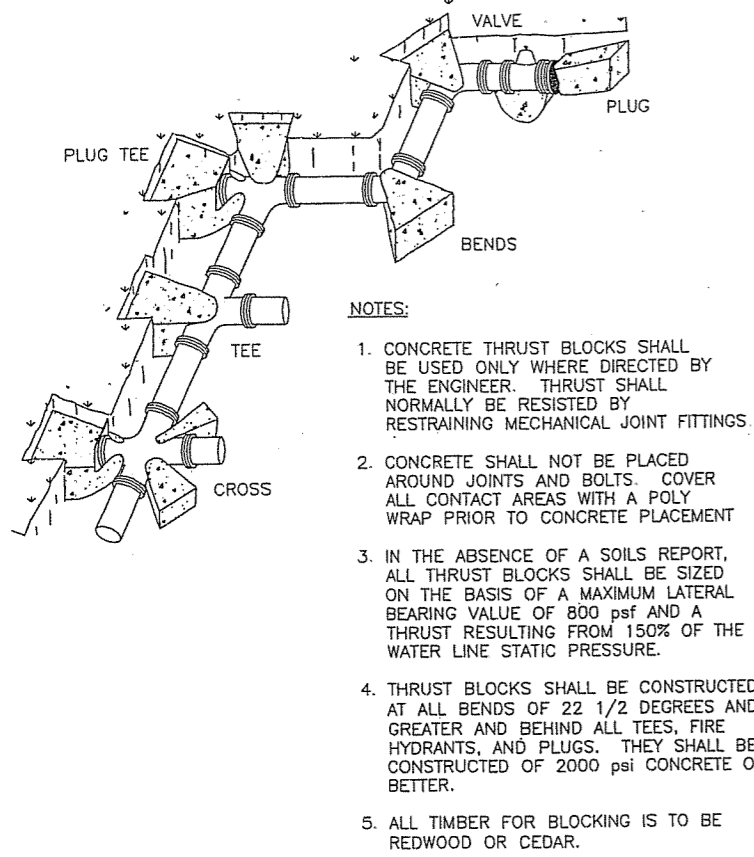
SHEET 5

SHEET 4

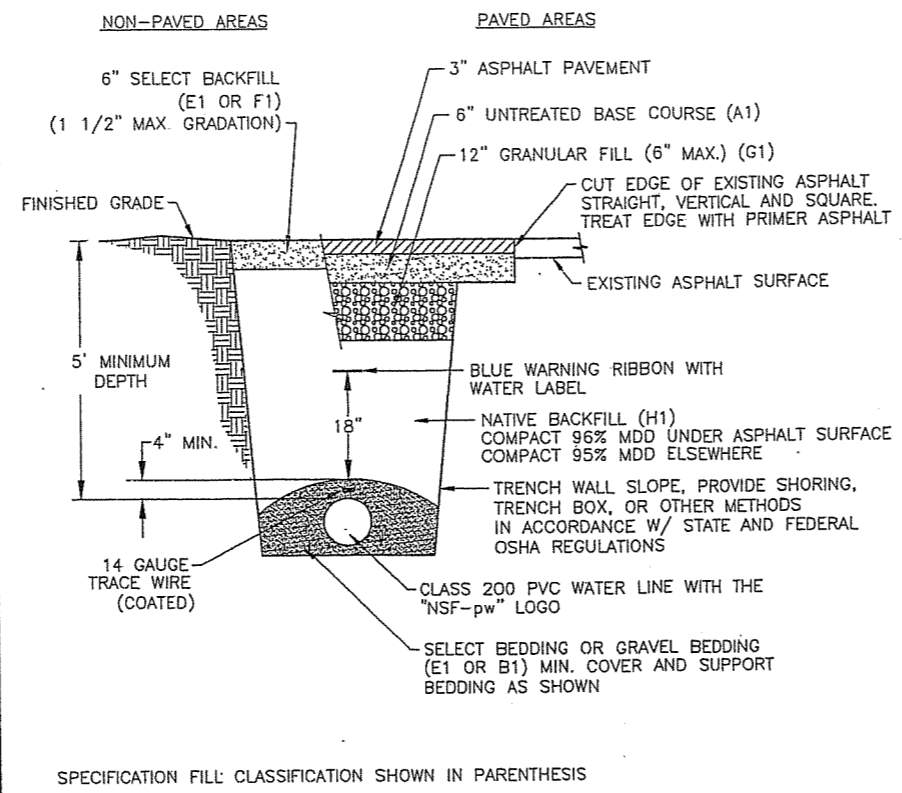
SHEET 6

SHEET 7

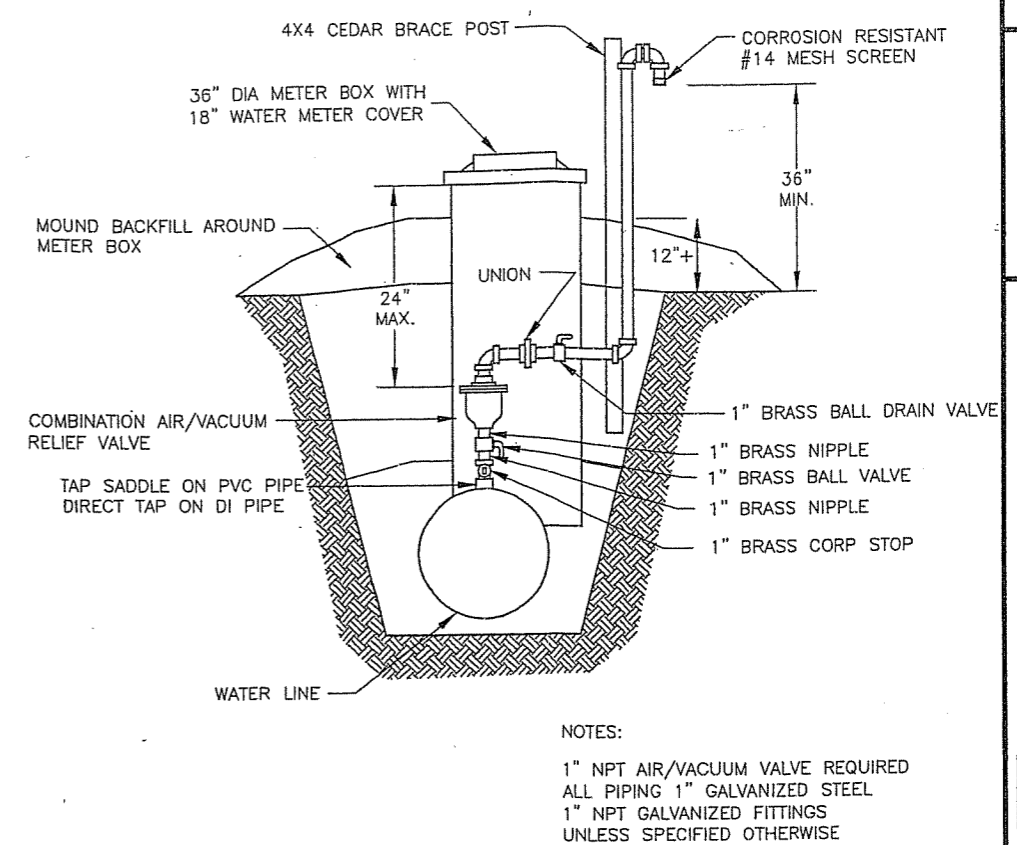
PROJECT MAP AND SHEET INDEX	UTAH MINI RANCHES PHASE 3 WATER LINE SOUTH DUCHESNE CULINARY WATER DUCHESNE, UTAH 84021	 <p>Engineering Services, Inc. P.O. Box 1485 Vernal, Utah 84078 (435) 781-2550</p>	ORIGINAL BY: PAH DATE: 8/26/04	SHEET 2
	REVISIONS BY: DATE: _____ BY: DATE: _____ BY: DATE: _____		OF 7	



TYPICAL THRUST BLOCK DETAIL
NOT TO SCALE



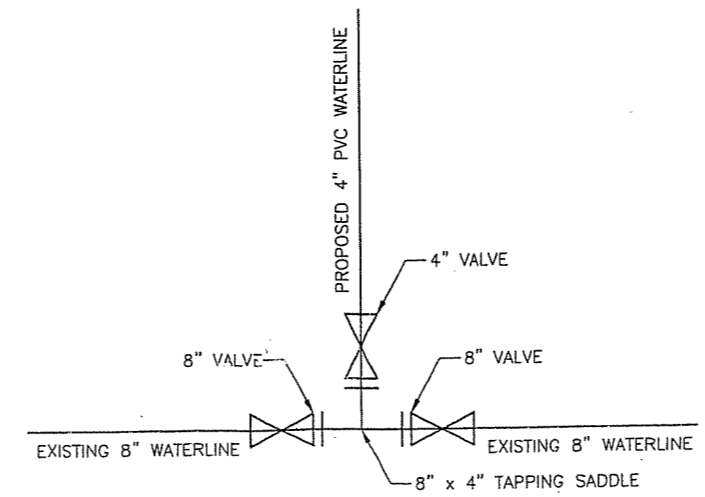
TYPICAL WATER LINE TRENCH DETAIL
NOT TO SCALE



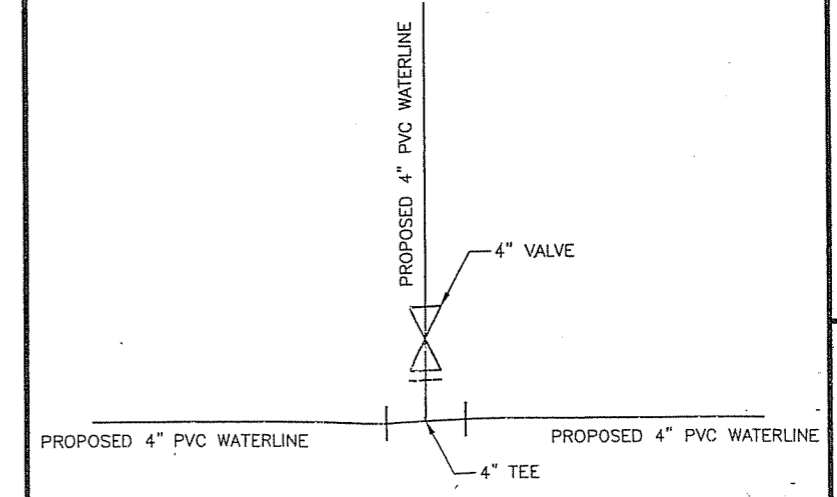
COMBINATION AIR-VACUUM VALVE
NOT TO SCALE

PROJECT NOTES

1. ALL NEWLY INSTALLED WATER PIPE SHALL PASS A CHLORINE RESIDUAL TEST, IN ACCORDANCE WITH AWWA C651 AS LATEST REVISED
2. ALL WATER PIPE SHALL BE CLASS 200 PVC, CONFORMING TO AWWA STANDARDS, AND ALL PIPING AND MATERIALS USED WITH THE PIPING SHALL BEAR THE "NSF-pw" LOGO
3. ALL NEW VALVES SHALL BE RESILIENT-SEATED GATE VALVES, CONFORMING TO AWWA C509-01 STANDARDS, AND BE EPOXY COATED
4. ALL VALVES, ELBOWS, TEES, CROSSES, OR ANY OTHER FITTING AS DIRECTED BY THE ENGINEER SHALL HAVE RESTRAINING MECHANICAL JOINTS
5. ALL CAST OR DUCTILE IRON FITTINGS AND VALVES SHALL HAVE A POLYETHYLENE WRAP ENCASEMENT IN ACCORDANCE WITH AWWA C-105
6. TRENCH, PIPE INSTALLATION, AND THRUST BLOCKS SHALL BE IN ACCORDANCE WITH TYPICAL DETAILS
7. WATER LINES SHALL BE INSTALLED A MINIMUM OF 10 FEET HORIZONTALLY AND 18 INCHES VERTICALLY FROM ALL SEWER LINES
8. NUMBER AND LOCATION OF EXISTING UTILITIES SHOWN ON PLANS ARE APPROXIMATE, CONTRACTOR SHALL CALL BLUE STAKES AND FIELD VERIFY, OVERHEAD UTILITIES ARE NOT SHOWN ON DRAWINGS
9. CONTRACTOR IS RESPONSIBLE TO REMOVE, SALVAGE, AND REPLACE FENCE LINES WHICH ARE DISTURBED DURING CONSTRUCTION
10. CONTRACTOR SHALL BE RESPONSIBLE TO REPLACE ALL ASPHALT SURFACES, CONCRETE FLAT WORK, DRIVE APPROACHES, DRAINAGE AND IRRIGATION STRUCTURES, AND LANDSCAPING WHICH ARE AFFECTED DURING CONSTRUCTION
11. TRAFFIC CONTROL SHALL BE IN ACCORDANCE WITH THE LATEST EDITION OF THE MANUAL OF UNIFORM TRAFFIC CONTROL OR AS OTHERWISE REQUIRED BY UTAH DEPARTMENT OF TRANSPORTATION
12. COMBINATION AIR/VACUUM VALVES TO BE INSTALLED AT HIGH POINTS IN PROPOSED WATER LINE WITH ENGINEER'S APPROVAL
13. THE OPEN ENDS OF ALL PIPELINE UNDER CONSTRUCTION SHALL BE COVERED AND EFFECTIVELY SEALED AT THE END OF THE DAYS WORK.



TYPICAL TIE-IN TO EXISTING WATER LINE
NOT TO SCALE

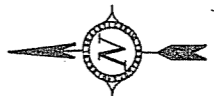
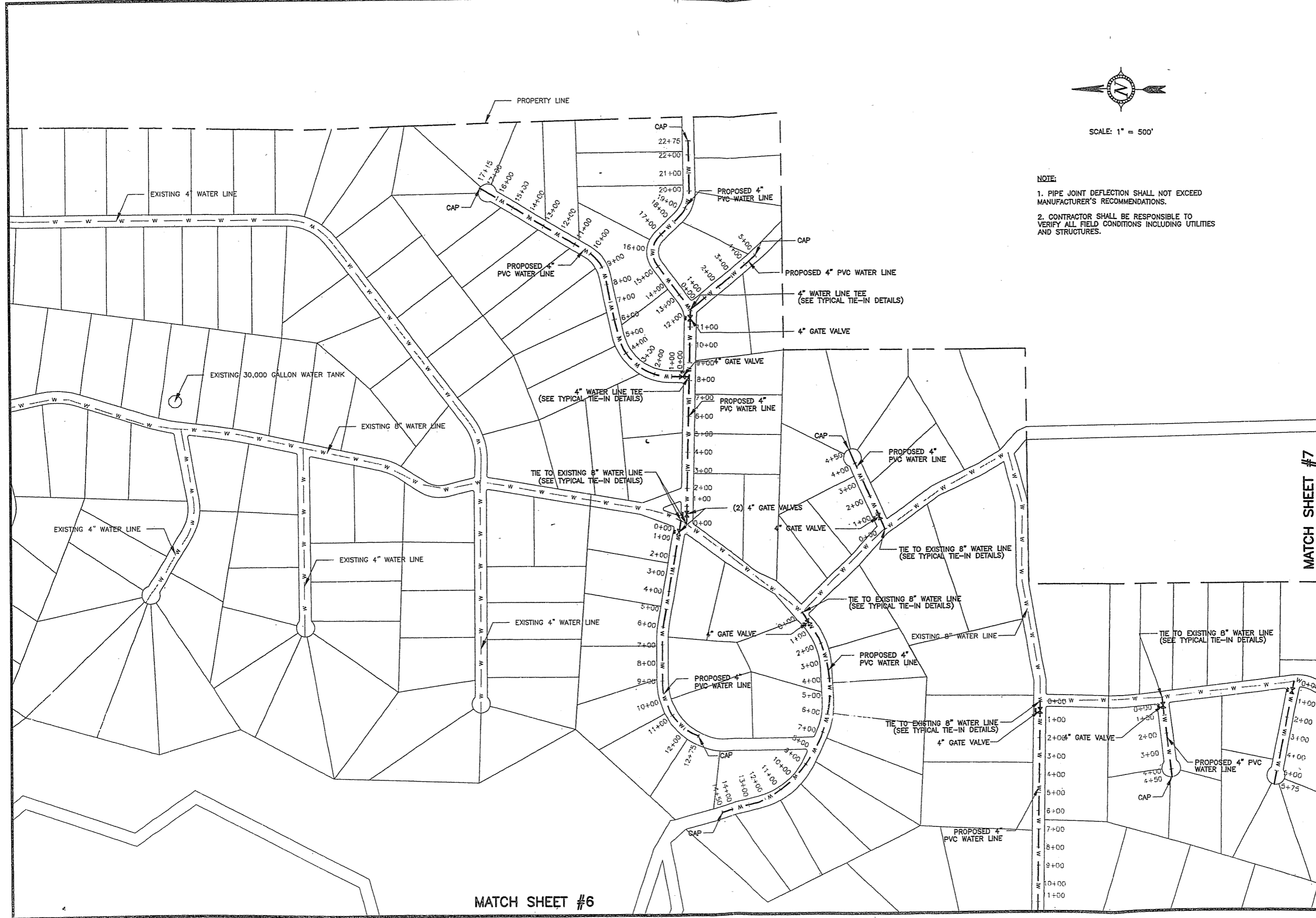


TYPICAL WATER LINE TEE
NOT TO SCALE

Engineering Services, Inc.
P.O. Box 1485
Vernal, Utah 84078
(435) 781-2550

UTAH MINI RANCHES
PHASE 3 WATER LINE
SOUTH DUCHESNE CULINARY WATER
DUCHESNE, UTAH 84021

WATER LINE DETAILS



SCALE: 1" = 500'

- NOTE:**
1. PIPE JOINT DEFLECTION SHALL NOT EXCEED MANUFACTURER'S RECOMMENDATIONS.
 2. CONTRACTOR SHALL BE RESPONSIBLE TO VERIFY ALL FIELD CONDITIONS INCLUDING UTILITIES AND STRUCTURES.

SHEET
5
OF 7

ORIGINAL	REVISIONS
BY: PAH DATE: 8/26/04	BY: DATE
	BY: DATE
	BY: DATE

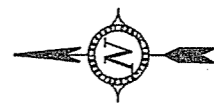
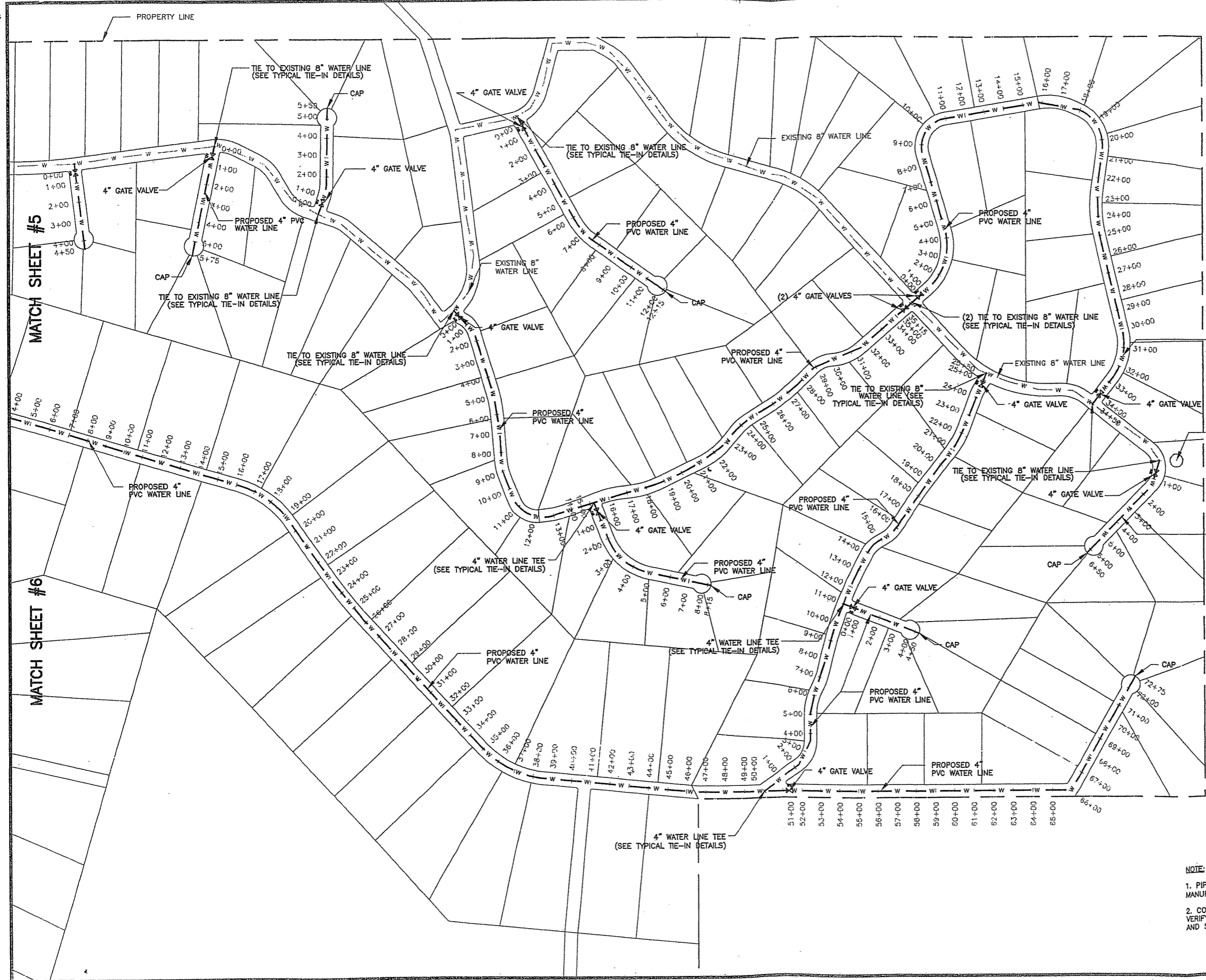
Engineering Services, Inc.
P.O. Box 1485
Vernal, Utah 84078
(435) 781-2550

**UTAH MINI RANCHES
PHASE 3 WATER LINE
SOUTH DUCHESNE CULINARY WATER
DUCHESNE, UTAH 84021**

**PHASE 3 WATER LINE
SITE PLAN**

MATCH SHEET #7

MATCH SHEET #6



SCALE: 1" = 500'

- NOTE:**
1. PIPE JOINT DEFLECTION SHALL NOT EXCEED MANUFACTURER'S RECOMMENDATIONS.
 2. CONTRACTOR SHALL BE RESPONSIBLE TO VERIFY ALL FIELD CONDITIONS INCLUDING UTILITIES AND STRUCTURES.

SHEET **7**
OF 7

ORIGINAL	REVISIONS
BY: <u>BAH</u> DATE: <u>8/26/04</u>	BY: _____ DATE: _____
	BY: _____ DATE: _____
	BY: _____ DATE: _____

Engineering Services, Inc.
 P.O. Box 1485
 Vernal, Utah 84078
 (435) 781-2550

**UTAH MINI RANCHES
 PHASE 3 WATER LINE
 SOUTH DUCHESNE CULINARY WATER
 DUCHESNE, UTAH 84021**

PHASE 3 WATER LINE
 SITE PLAN