

LAKE SIDE

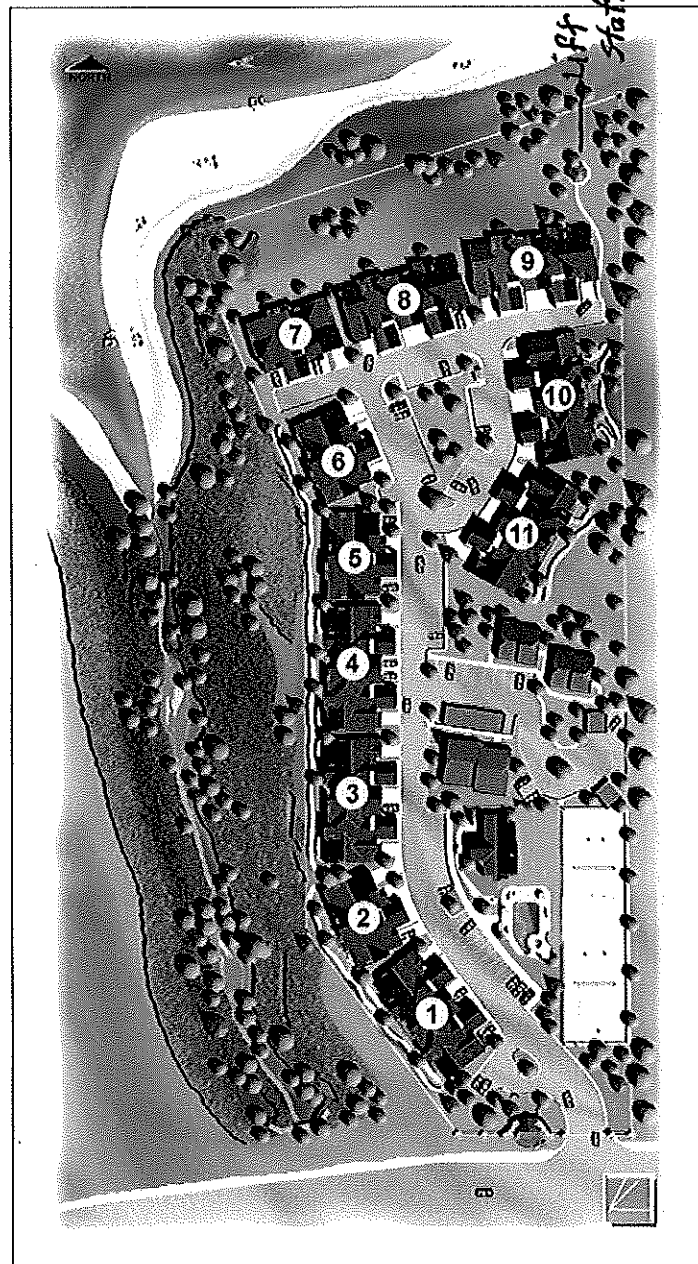
VILLAGE

presented by
MOUNTAIN LUXURY
REAL ESTATE & DEVELOPMENT

[CONDOS FOR SALE](#) [PRICE LIST](#) [FLOOR PLANS](#) [SITE PLAN](#) [AMENITIES](#) [RENTAL INFO](#) [HOMEOWNERS](#) [LOCATION MAPS](#) [OTHER AREA PROPERTIES](#) [CONTACT](#)

LAKE SIDE VILLAGE SITE PLAN

([Full Price List](#)) ([Amenities List](#))



[Amenities List](#)

[Full Price List](#)

“Exhibit A”

Picture was taken and submitted by Dawn Martell.



“Exhibit B”

Pictures were taken and submitted by Dawn Martell.





“Exhibit C”

Pictures were taken and submitted by Bob Kimball.



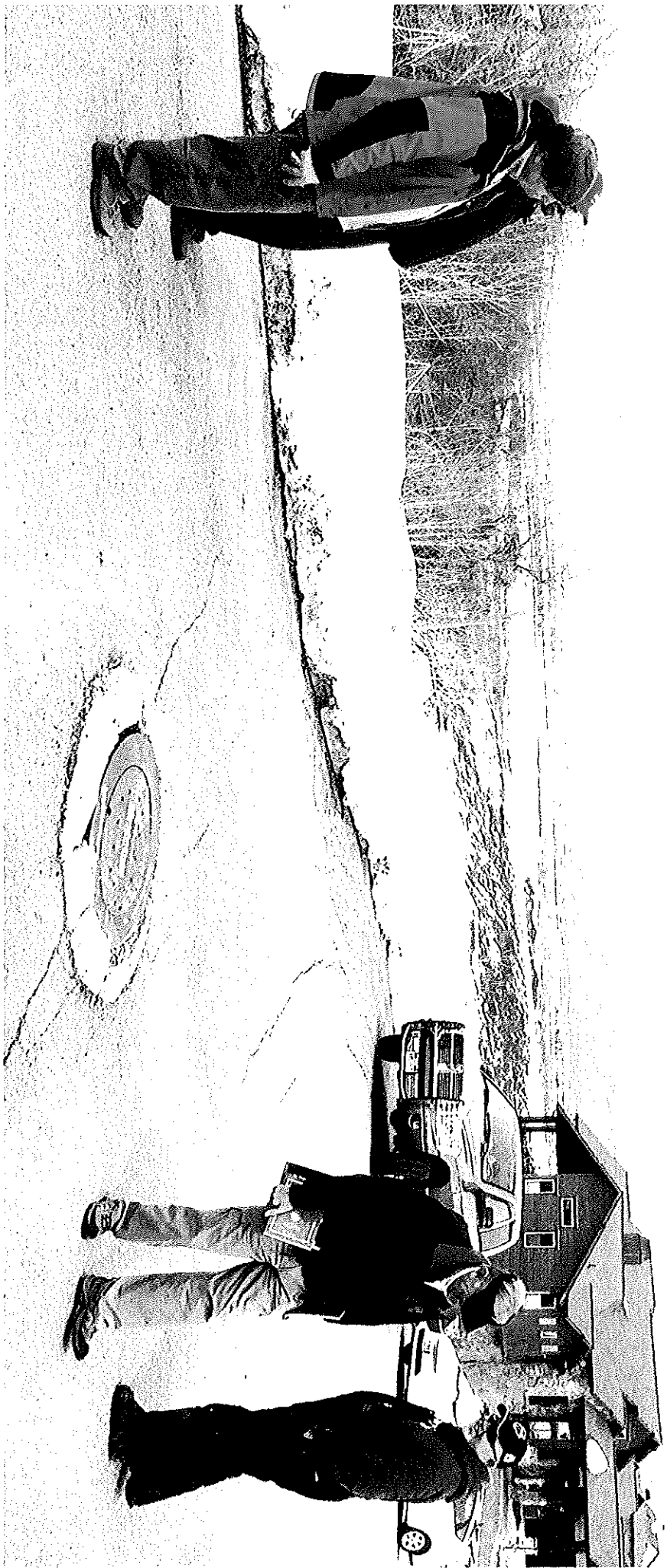
Taken 3/18/2011 @ 6:30pm. Shows sewer inflow. 8 inch pipe. Obstructed flow of pipe limited to approximately 3 inches free flow. Water flowing thru was at same rate as that flowing in Hwy 39 ditch flowing toward intersection above ground storm drain under Hwy 39. Water flowing thru sewer was very pristine and as clear as that in ditch.



Taken 3/18/2011 @ 6:31pm. 8 inch outflow pipe. Has only about 1 to 1.5 inches max of clear free flow.

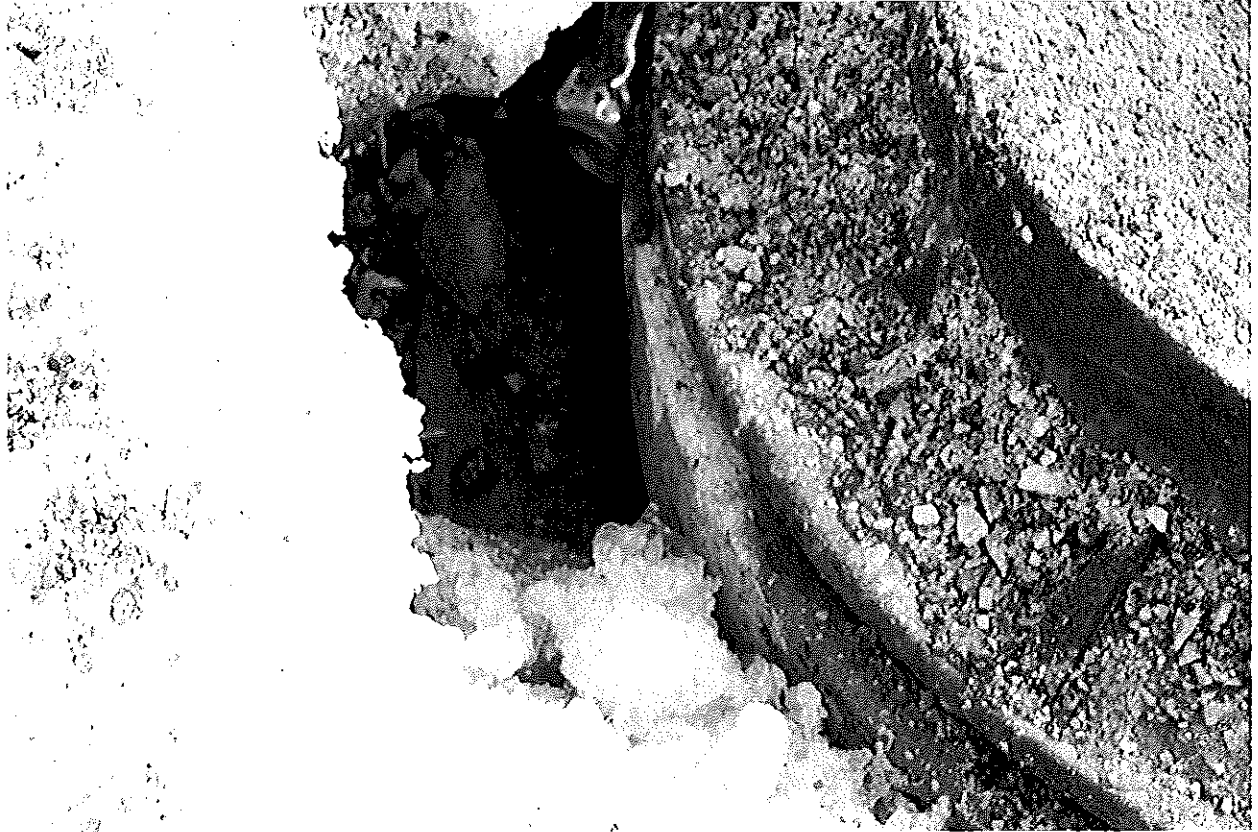
“Exhibit D”

Picture was taken and submitted by Ross Hudson.



“Exhibit E”

Pictures were taken and submitted by Bob Kimball.



Taken 3/17/2011 @ 4:26pm. Sewer manhole cover slid & first grade ring slid approx 1 to 1.5 inches off center from the 2nd grade ring.

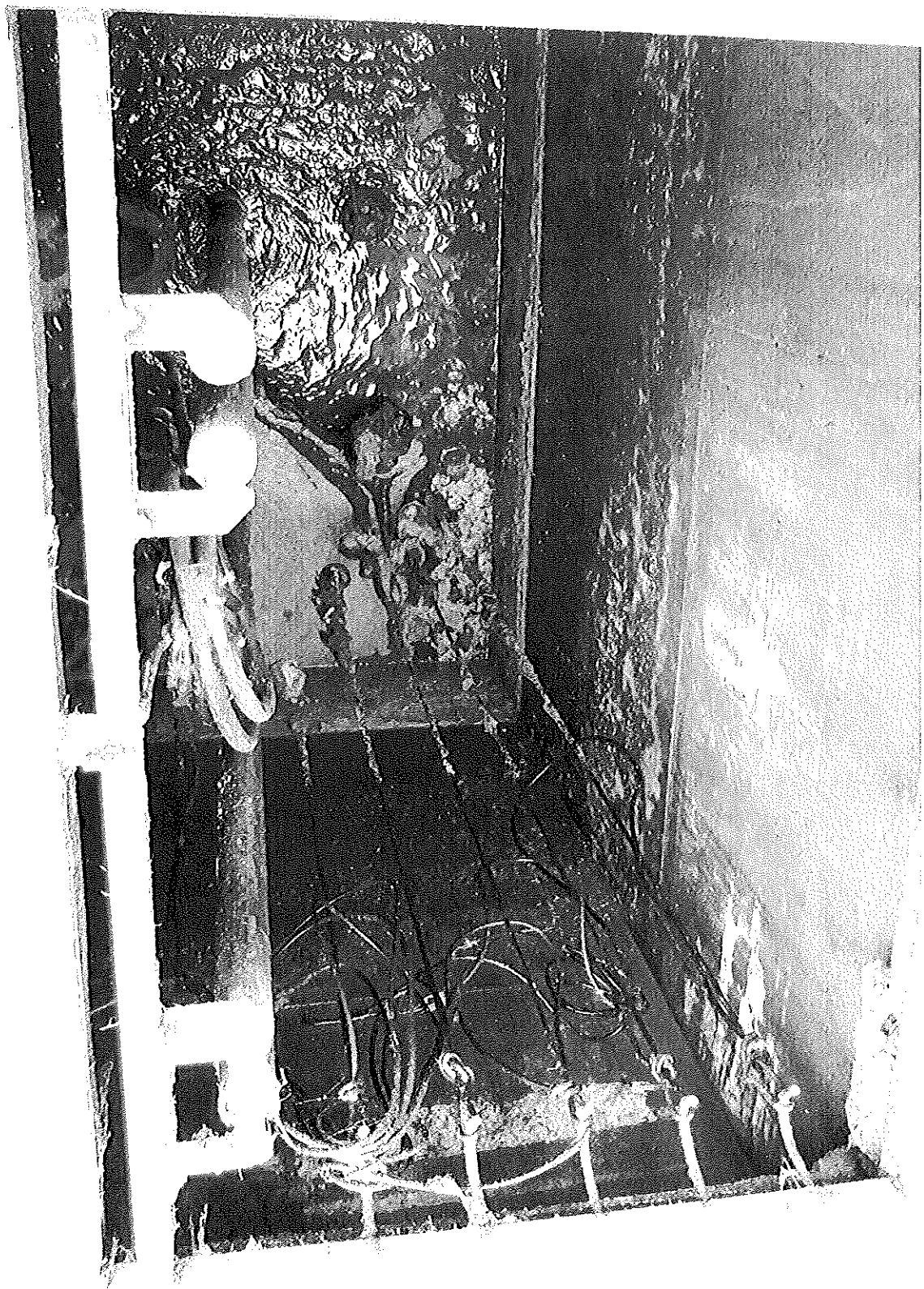


Taken 3/17/2011 @ 4:27pm. Showing broken first or last level grade ring.

“Exhibit F”

Pictures were taken and submitted by Ross Hudson.







“Exhibit G”

Pictures were taken and submitted by Ross Hudson.





“Exhibit H”

Pictures were taken and submitted by Ross Hudson.



