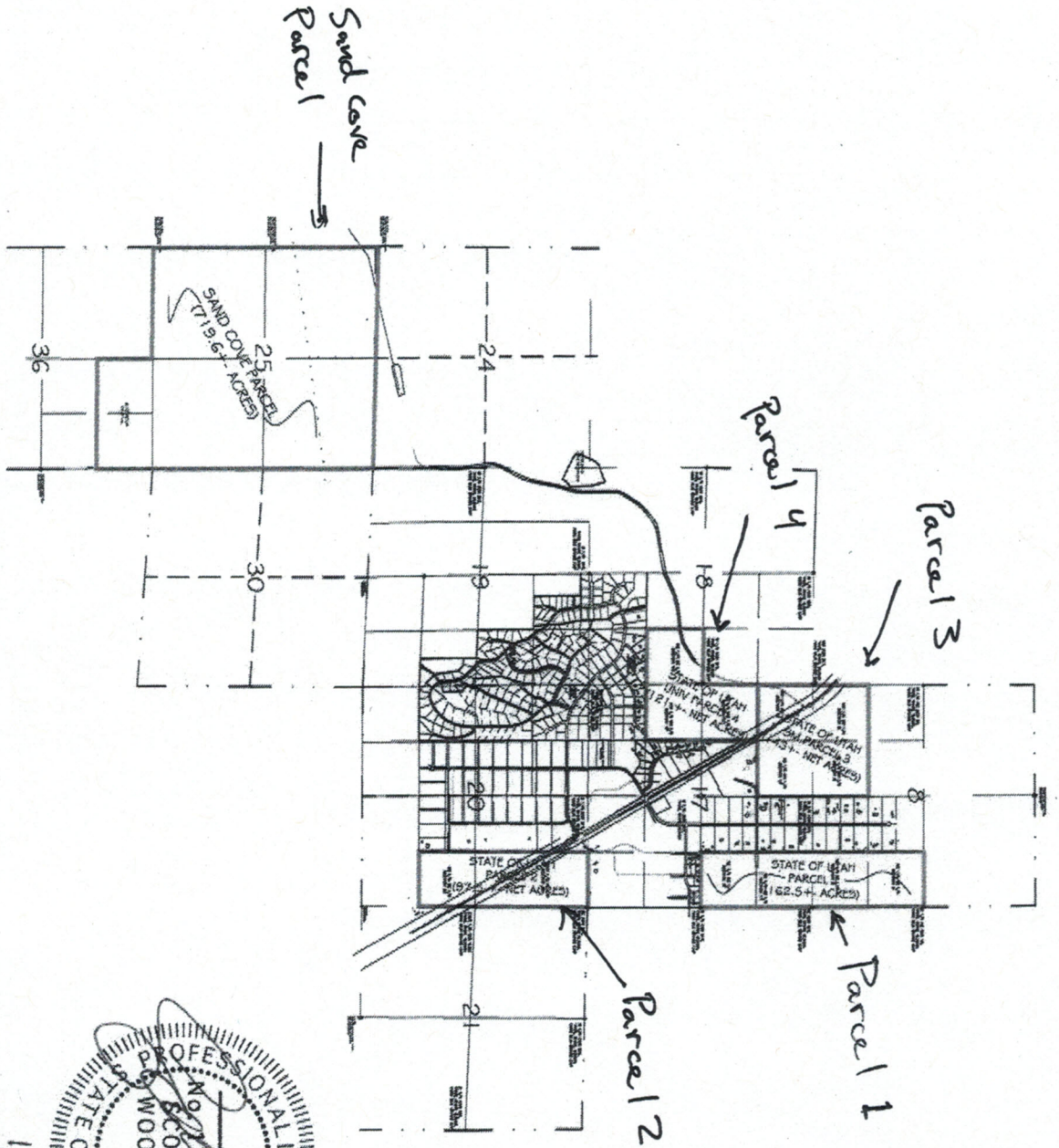


007-10-SITLA-SVY.DWG

SITLA AND SAND COVE PARCELS EXHIBIT "B"

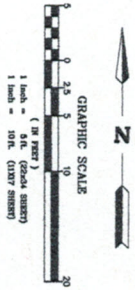
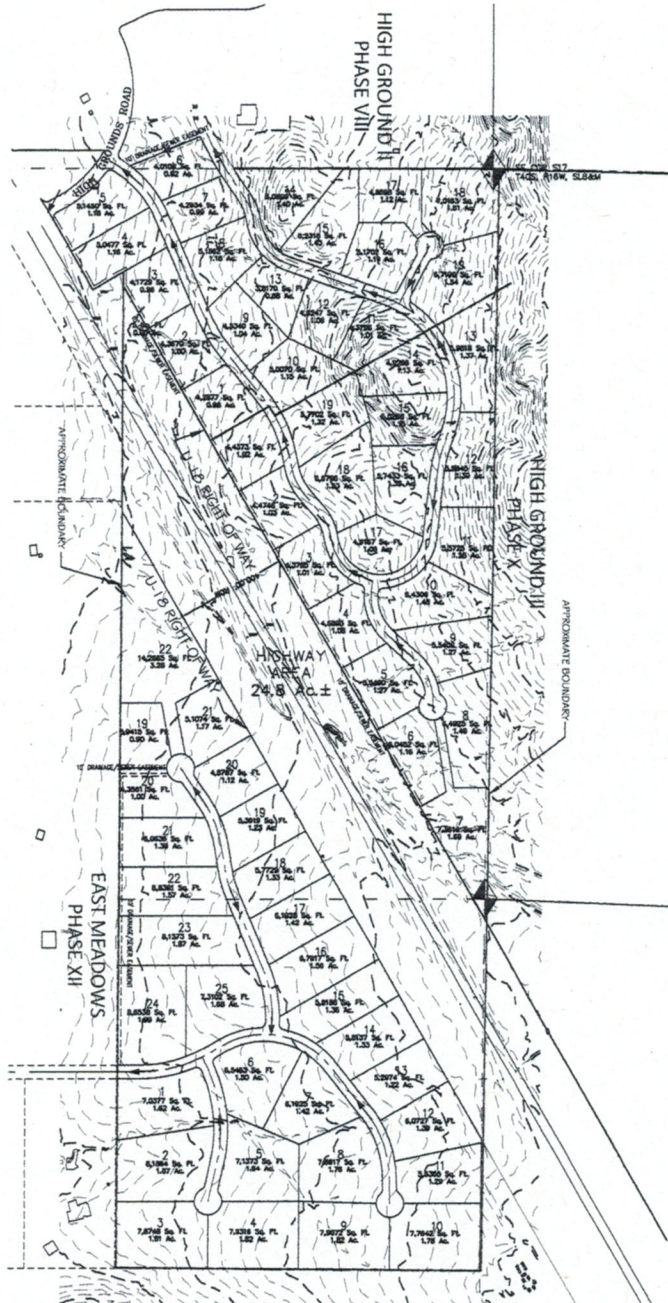


PROFESSIONAL LAND SURVEYOR
 STATE OF UTAH
 No. 4919
 SCOTT P.
 WOOLSEY
 1/26/15

ALPHA ENGINEERING

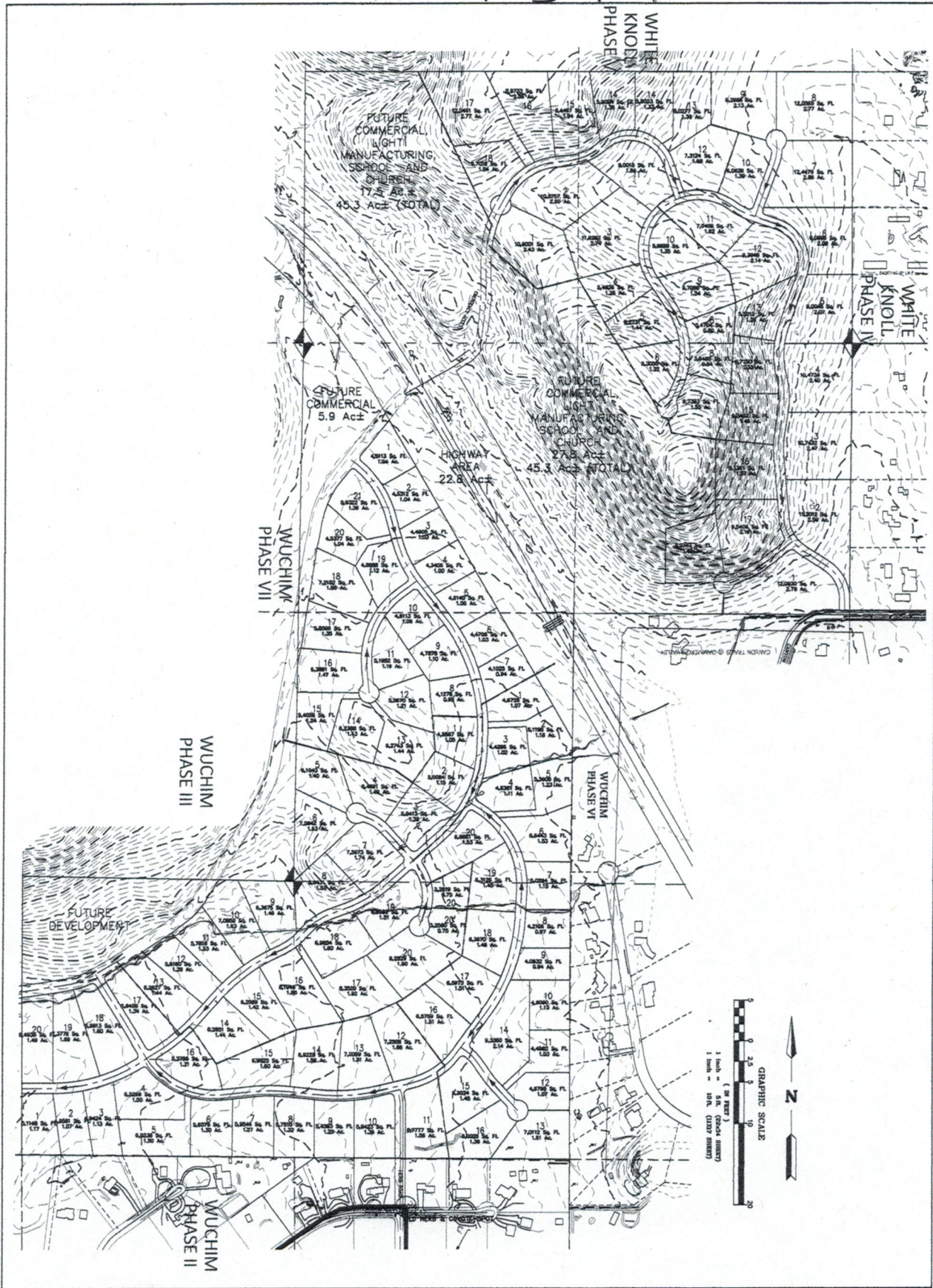
43 South 100 East, Suite 100 • St. George, Utah 84770
 T: 435.628.6500 • F: 435.628.6553 • alphaengineering.com

PANCI 2



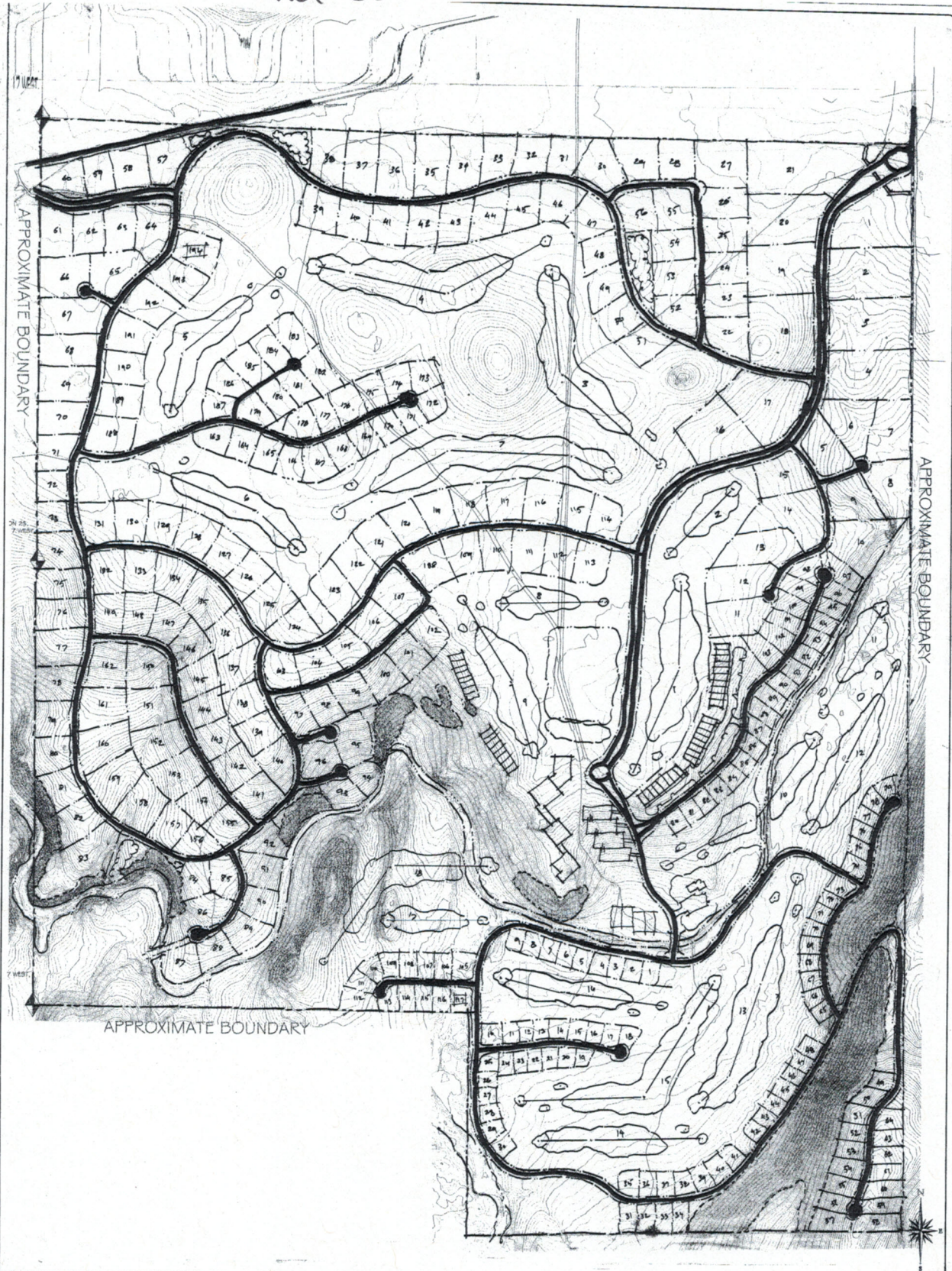
SHEET 2 OF 4	DATE JAN 17, 2014 BY MANDI	AREA 2 CONCEPTUAL LAYOUT DAMMERON CORP, DAMMERON VALLEY WASHINGTON COUNTY, UTAH		ALPHA ENGINEERING 43 South 100 East, Suite 100 - RR George, Utah 84770 T: 435.628.6959 • F: 435.628.0553 • alphaengineer@ig.com	NO. DATE BY DESCRIPTION REVISIONS
		2 2/2/4	2 2/2/4		2 2/2/4

PARCEL 3 + 4



NO. DATE BY DESCRIPTION REVISIONS	AREA 3 CONCEPTUAL LAYOUT DAMMERON CORP, DAMMERON VALLEY WASHINGTON COUNTY, UTAH			<p>ALPHA ENGINEERING 43 South 103 West, Suite 120 - St George, Utah 84778 T: 435.628.6664 F: 435.628.6653 - alphaengineering.com</p>
	3 3.24.24	DATE: JAN 17, 2024 DRAWN BY: [blank] CHECKED BY: [blank]	NO. DATE BY DESCRIPTION REVISIONS	

Sand Cove Parcel



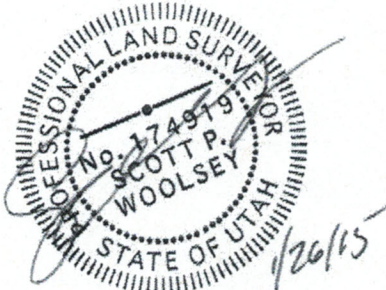


EXHIBIT "A"

SITLA & SAND COVE PARCEL DESCRIPTIONS (January 26, 2015)

SITLA PARCEL #1

The Northeast ¼ of the Southeast ¼ (NE1/4SE1/4); The Southeast ¼ of the Southeast ¼ (SE1/4SE1/4) of Section 8; The Northeast ¼ of the Northeast ¼ (NE1/4NE1/4); The Southeast ¼ of the Northeast ¼ (SE1/4NE1/4, of Section 17, Township 40 South, Range 16 West, Salt Lake Base and Meridian.
(Containing: 162.5+- Acres).

SITLA PARCEL #2

The East ½ of the Northeast ¼ (E1/2NE1/4); The Northeast ¼ of the Southeast ¼ (NE1/4SE1/4) of Section 20, Township 40 South, Range 16 West, Salt Lake Base and Meridian.
(Containing: 97.5+- Net Acres).

SITLA PARCEL #3

The Southwest ¼ of the Southwest ¼ (SW1/4SW1/4); The Southeast ¼ of the Southwest ¼ (SE1/4SW1/4) of Section 8; The Northwest ¼ of the Northwest ¼ (NW1/4NW1/4); The Northeast ¼ of the Northwest ¼ (NE1/4NW1/4) of Section 17, Township 40 South, Range 16 West, Salt Lake Base and Meridian.
(Containing: 143+- Net Acres).

SITLA PARCEL #4

The Southwest ¼ of the Northwest ¼ (SW1/4NW1/4); The Northwest ¼ of the Southwest ¼ (NW1/4SW1/4) of Section 17; The Northeast ¼ of the Southeast ¼ (NE1/4SE1/4) of Section 18, Township 40 South, Range 16 West, Salt Lake Base and Meridian.
(Containing: 121+- Net Acres).

SAND COVE PARCEL

All of Section 25, together with the North ½ of the Northeast ¼ of Section 36, Township 40 South, Range 17 West, Salt Lake Base and Meridian.
(Containing: 716.6+- Acres).

