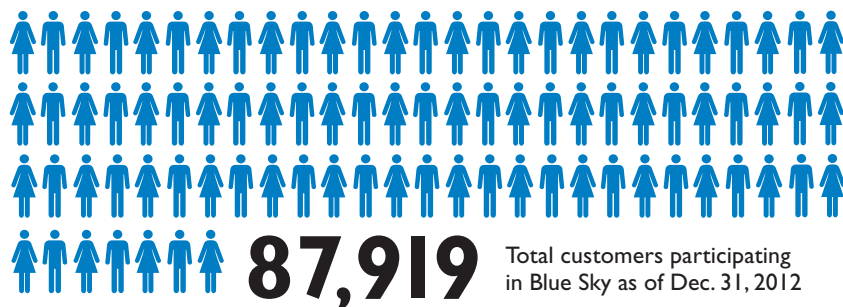


In 2012, you made a difference with Blue Sky.



Equivalent environmental benefits associated with all 2012 Blue Sky purchases:



377,062
Tons of CO₂ avoided

EQUALS



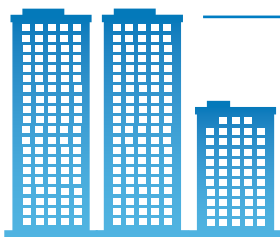
65,202
Cars off the road



8,865,110
Trees planted

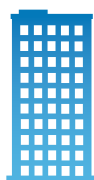


764,178,566
Miles not driven



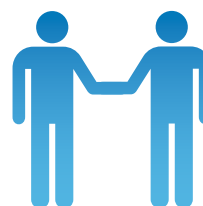
2,557

Number of non-residential customers participating in the Blue Sky program



500

Non-residential customers enrolled in 2012



1,075

Customers enrolled in the Blue Sky business partnership program



22

New community-based renewable energy projects that received support from Blue Sky customers in 2012. These projects are located in the following communities:

Alpine, UT
Cedar City, UT
Erda, UT
Herriman, UT
Lander, WY
Orem, UT

Park City, UT
Preston, ID
Salt Lake City, UT
Saratoga Springs, UT
Syracuse, UT
Tooele, UT

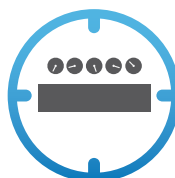


156

Number of community-based renewable energy projects that have received Blue Sky funding since 2006

4,876

kilowatt generation capacity created by the community-based renewable energy projects funded by Blue Sky customers since 2006



Let's turn the answers on.