

Customer Name
 Address
 City, State, Zip

Dear Name,

 Thank you for supporting renewable energy through Rocky Mountain Power's Blue SkySM renewable energy program in 2012.

 Your current block purchase is **XX** block(s) per month. Your total support of **XX,XXX** kilowatt-hours of western region wind energy over the past year has had the equivalent environmental benefit of:


You are one of nearly 88,000 customers participating in the Green-e Energy certified Blue Sky program who supported more than 604 million kilowatt-hours of renewable energy over the last year. On the back of this letter, you can see all the ways Blue Sky customers like you are making a real difference together.

Just for you

Make the most of your Blue Sky participation.

- Read the bi-annual *Forecast* newsletter just for Blue Sky customers at **rockymountainpower.net/forecast**.
- Like us on Facebook and stay connected to Blue Sky at **facebook.com/rockymountainpower.bluesky**.
- Tour a renewable energy project! Send an email to **windtour@rockymountainpower.net** or call **1-866-476-9378** ext. 40 for information on 2013's tour.
- Sign up to go paperless and receive your annual letter and *Forecast* newsletters in your email inbox! Visit **rockymountainpower.net/paperless**.

 It's easy to do even more. Increase your Blue Sky support anytime by filling out the form below, contacting us at **1-800-769-3717** or online at **rockymountainpower.net/bluesky**.

Sincerely,



 Karen Gilmore
 Vice President, Customer Services


The environmental benefit figures in this letter are based on data and calculations provided by the U.S. Environmental Protection Agency.

AR12-UTRES


Yes, I want to increase my support for Blue Sky!
I would like to increase my monthly purchase of Blue Sky to:

- | | |
|---|--|
| <input type="checkbox"/> 3 blocks (300 kwh) \$5.85/month | <input type="checkbox"/> 10 blocks (1,000 kwh) \$19.50/month |
| <input type="checkbox"/> 5 blocks (500 kwh) \$9.75/month | <input type="checkbox"/> _____ blocks @ \$1.95/block/month |
| <input type="checkbox"/> 8 blocks (800 kwh) \$15.60/month | |

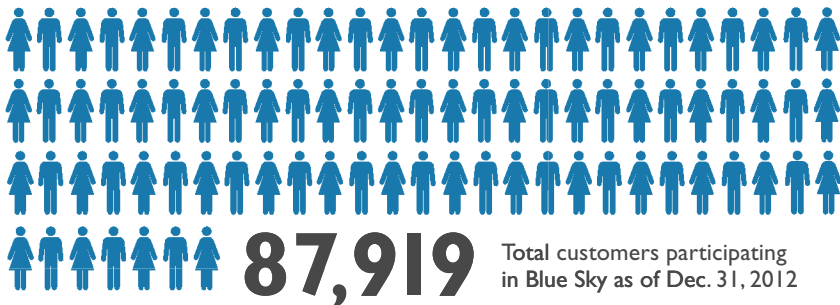
 You can also check out our online calculator at **rockymountainpower.net/calculator** to help you determine how many blocks to buy.

Name:		Site ID:
Service address:		
City:	State:	Zip:
Daytime phone:	Email:	

AR12-UTRES

 One Blue Sky block only costs \$1.95 per month and supports 100 kilowatt-hours of renewable energy. Each block represents 100 kilowatt-hours of western region wind generation. Participation in the program can also help support the development of smaller community-based renewable energy projects. Visit **rockymountainpower.net/blueskyresources** for specific product information.

In 2012, you made a difference with Blue Sky.



Equivalent environmental benefits associated with all 2012 Blue Sky purchases:

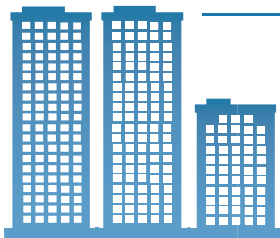


377,062
Tons of CO₂ avoided

EQUALS



OR



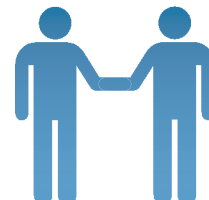
2,557

Number of non-residential customers participating in the Blue Sky program



500

Non-residential customers enrolled in 2012



1,075

Customers enrolled in the Blue Sky business partnership program



22

New community-based renewable energy projects that received support from Blue Sky customers in 2012. These projects are located in the following communities:

Alpine, UT
Cedar City, UT
Erda, UT
Herriman, UT
Lander, WY
Orem, UT

Park City, UT
Preston, ID
Salt Lake City, UT
Saratoga Springs, UT
Syracuse, UT
Tooele, UT

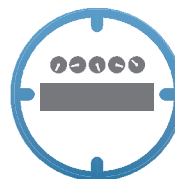


156

Number of community-based renewable energy projects that have received Blue Sky funding since 2006

4,876

kilowatt generation capacity created by the community-based renewable energy projects funded by Blue Sky customers since 2006



Let's turn the answers on.

The environmental benefits figures in this letter are based on data and calculations provided by the U.S. Environmental Protection Agency.

To increase your support, simply select the number of Blue Sky blocks that you'd like to support and send the completed enrollment form in the enclosed envelope. You can also visit rockymountainpower.net/bluesky or call **1-800-769-3717** to increase or change your Blue Sky support at any time.