

Utah Cost of Service and Rate Design Task Force

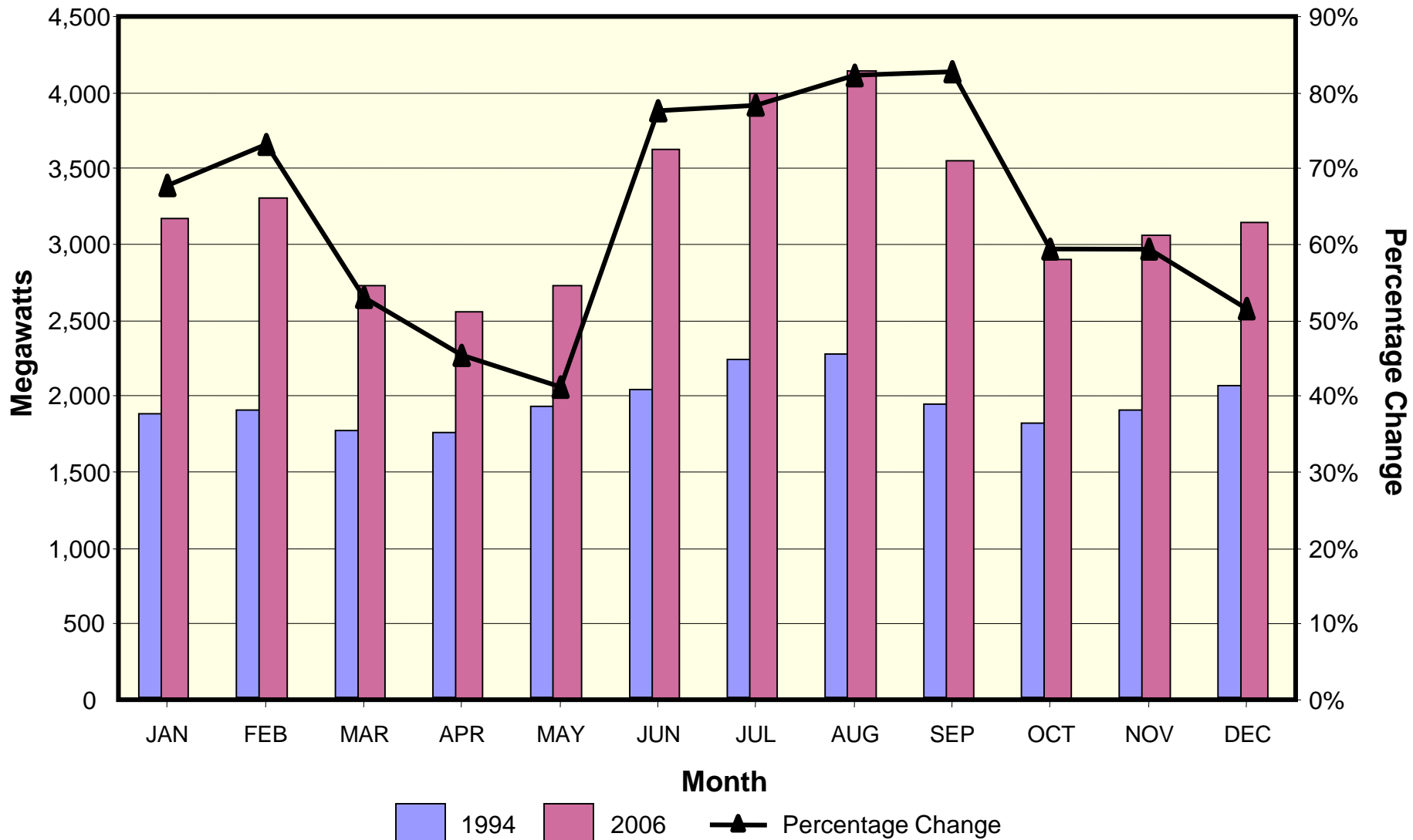
Seasonality in Costs and Loads

Maurice Brubaker

June 15, 2005
Salt Lake City, Utah

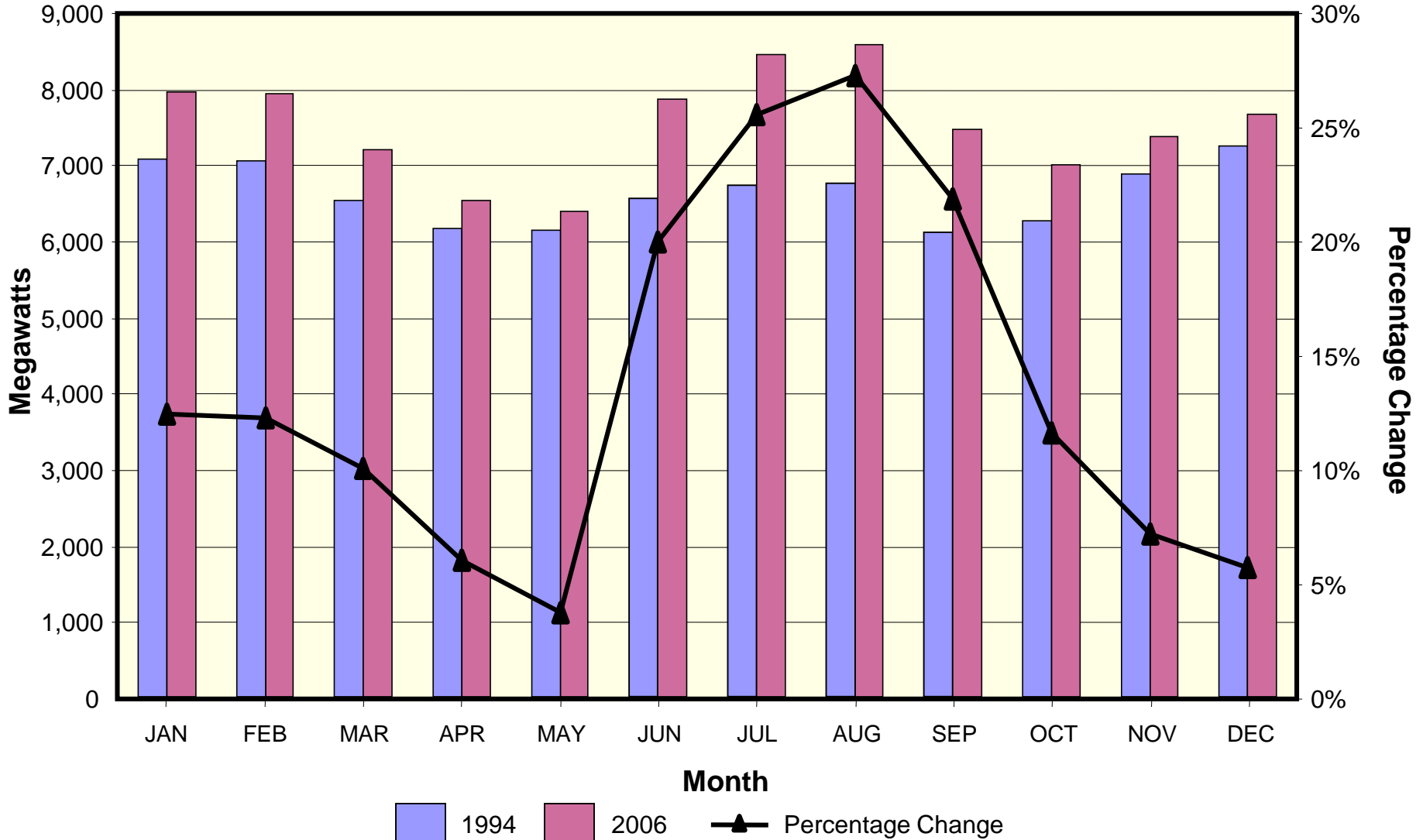
PacifiCorp-Utah

Comparison of Monthly Peaks
for Years 1994 and 2006



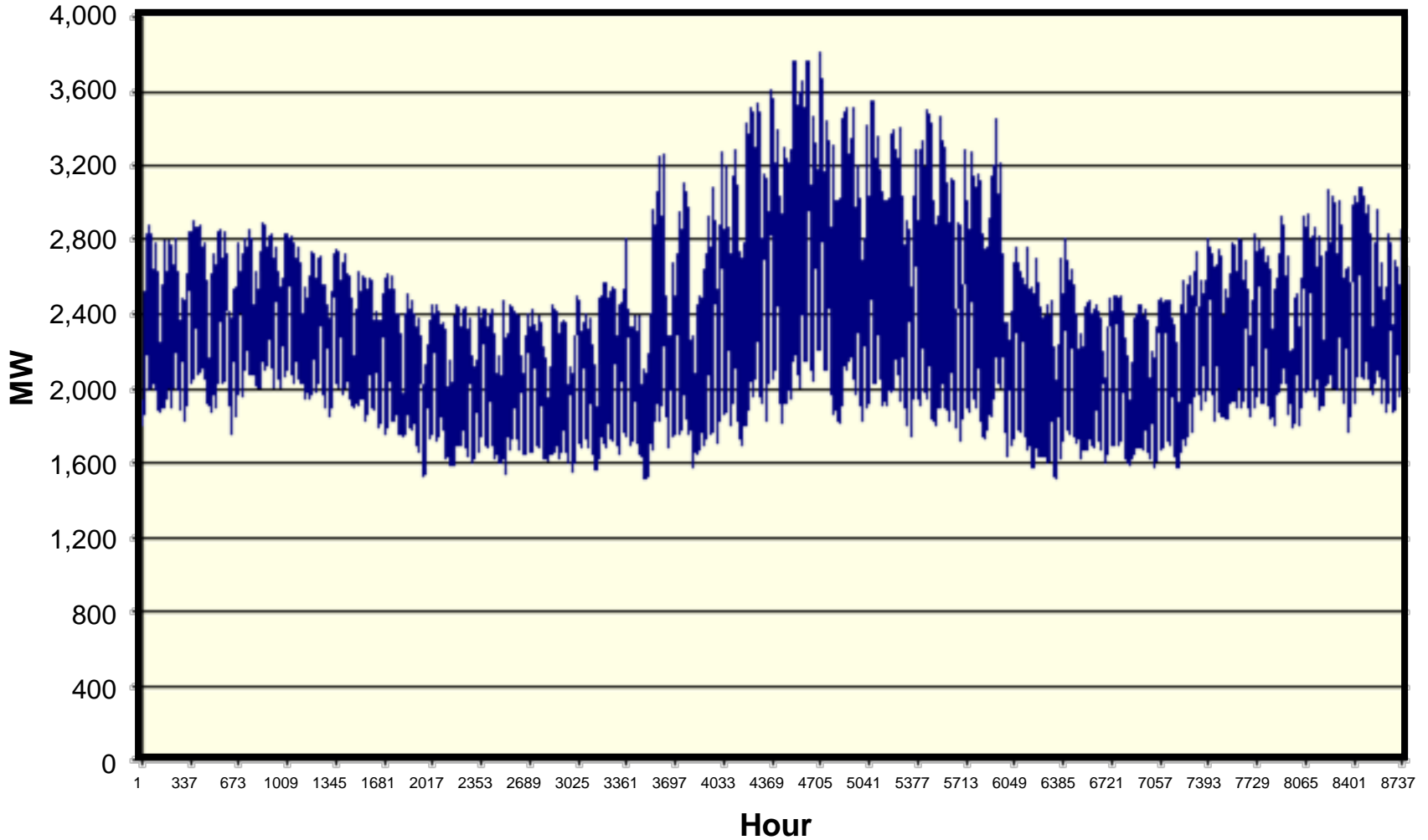
PacifiCorp

Comparison of Monthly Peaks for Years 1994 and 2006



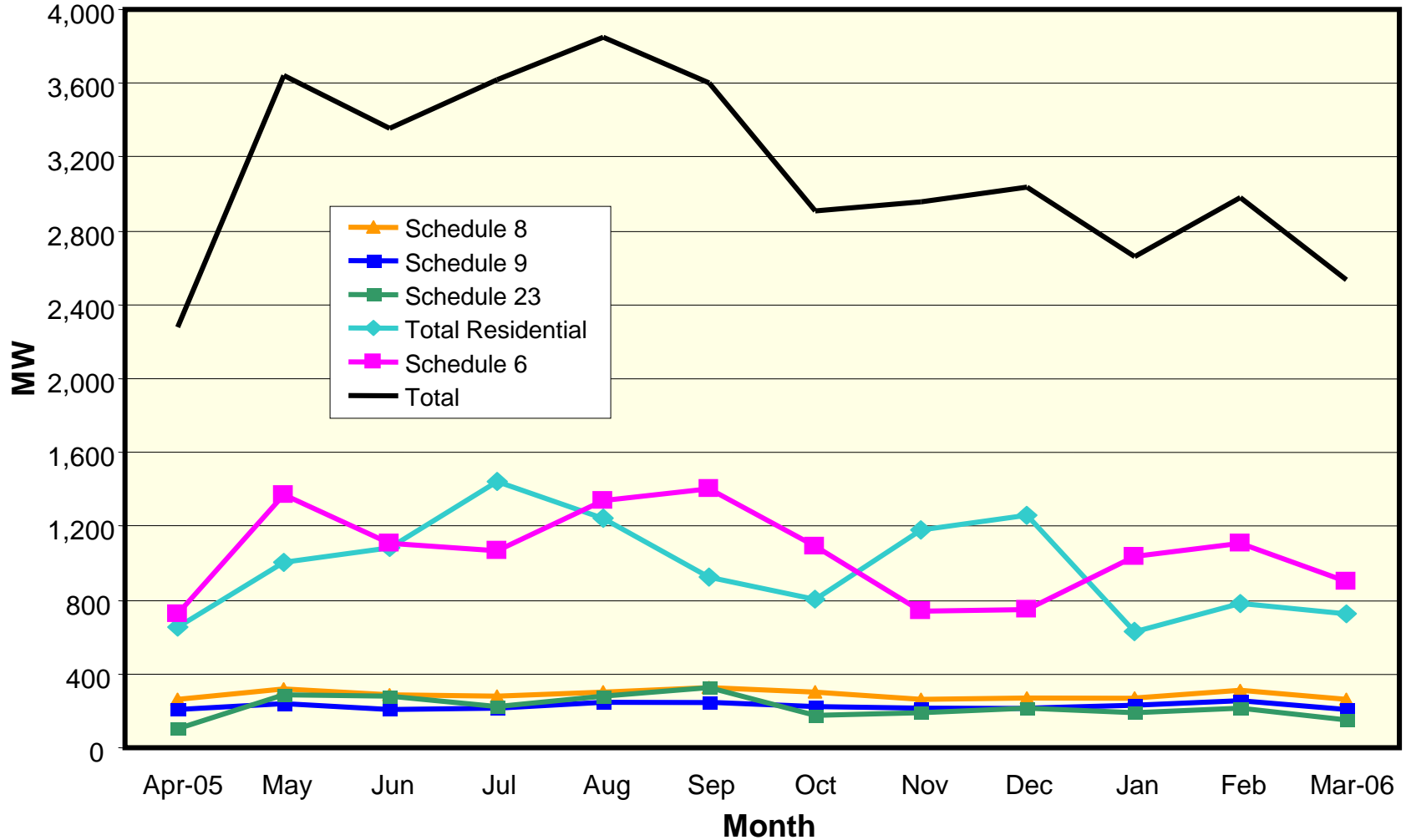
PacifiCorp

Hourly Load Data - Utah



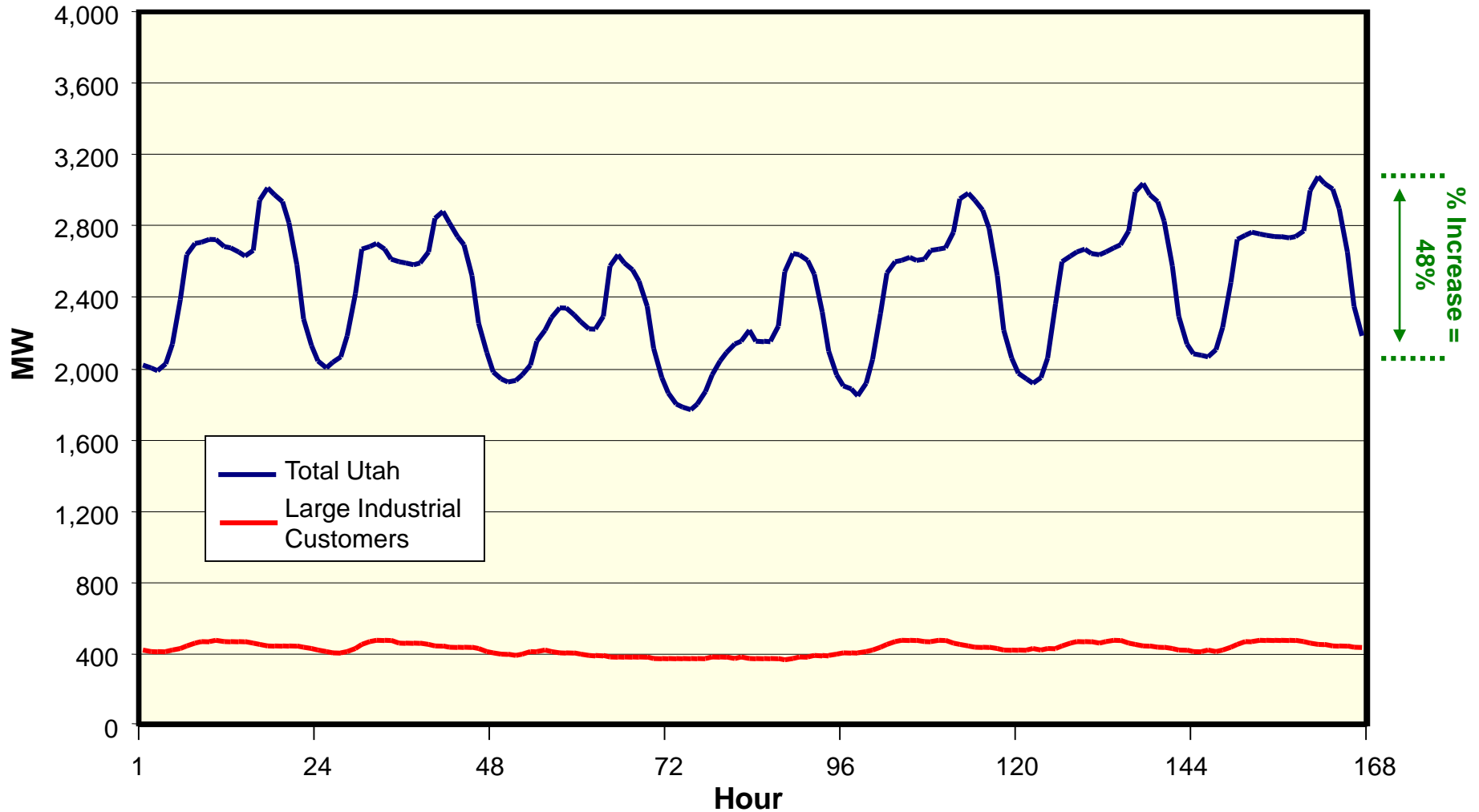
PacifiCorp-Utah

Contribution of Major Classes to Coincident Peak



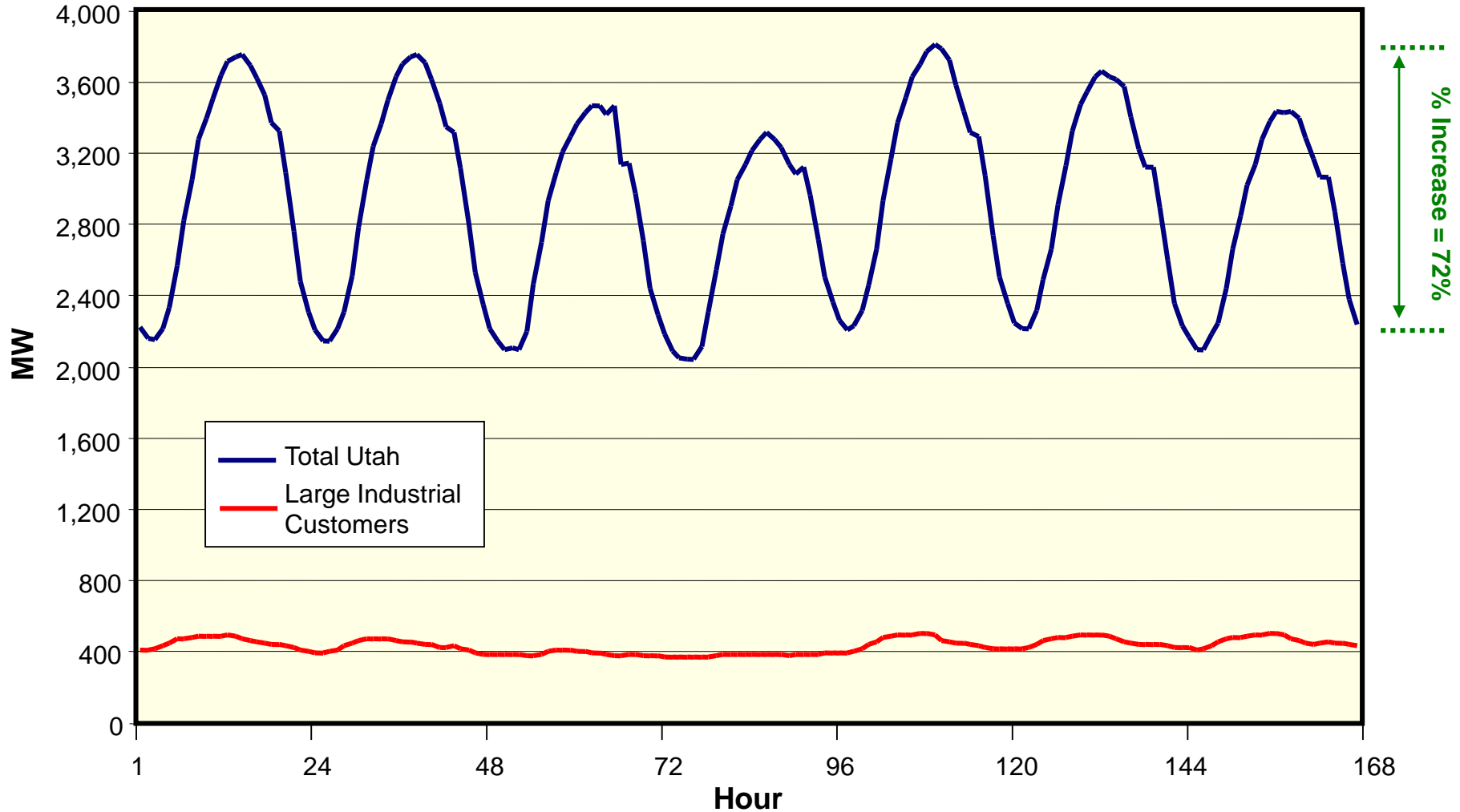
PacifiCorp-Utah

Hourly Load Data for Total Utah and Large Industrial Customers
Maximum Winter Week



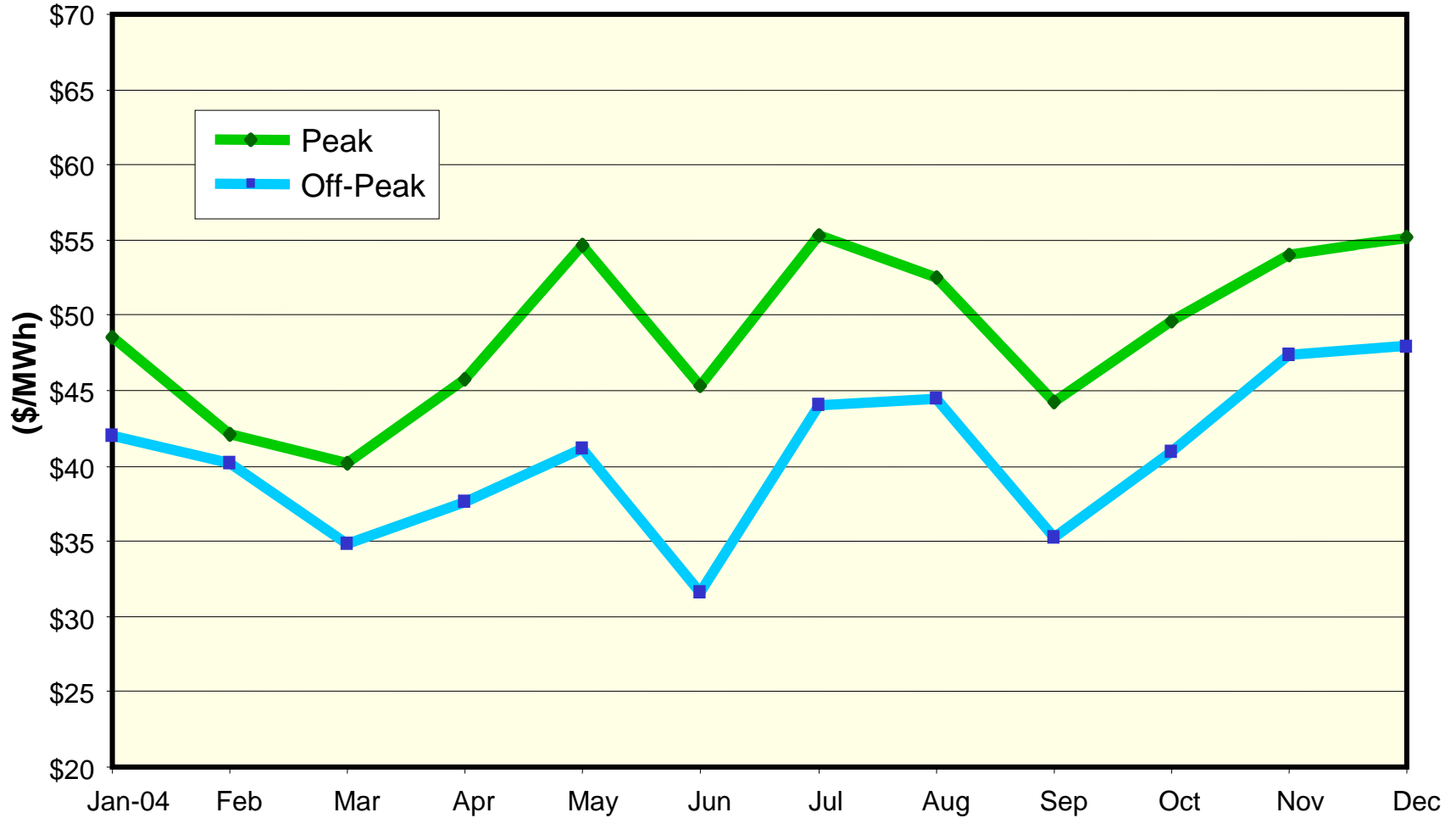
PacifiCorp-Utah

Hourly Load Data for Total Utah and Large Industrial Customers Maximum Summer Week



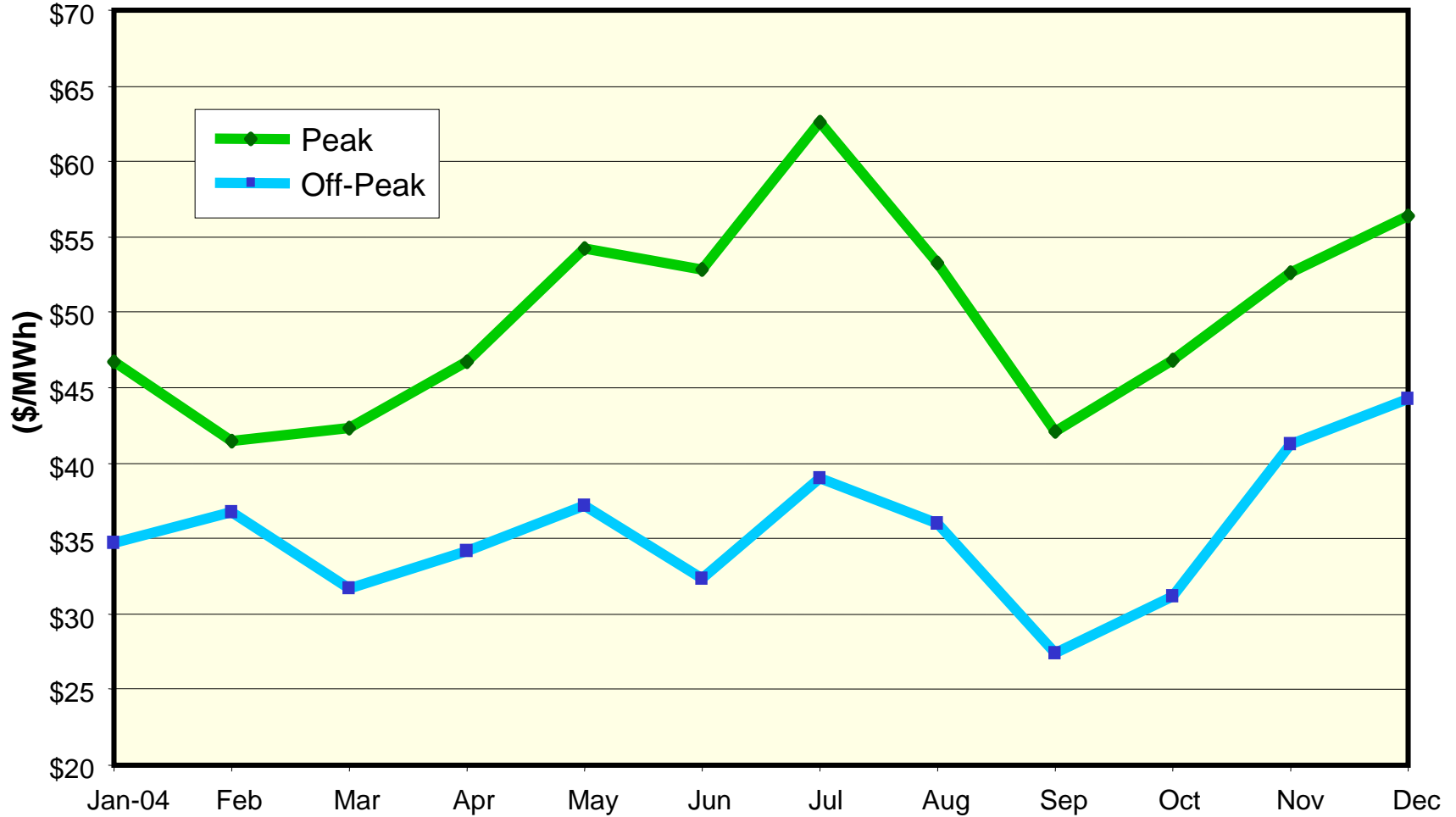
COB

Average Monthly On-Peak Prices 2004



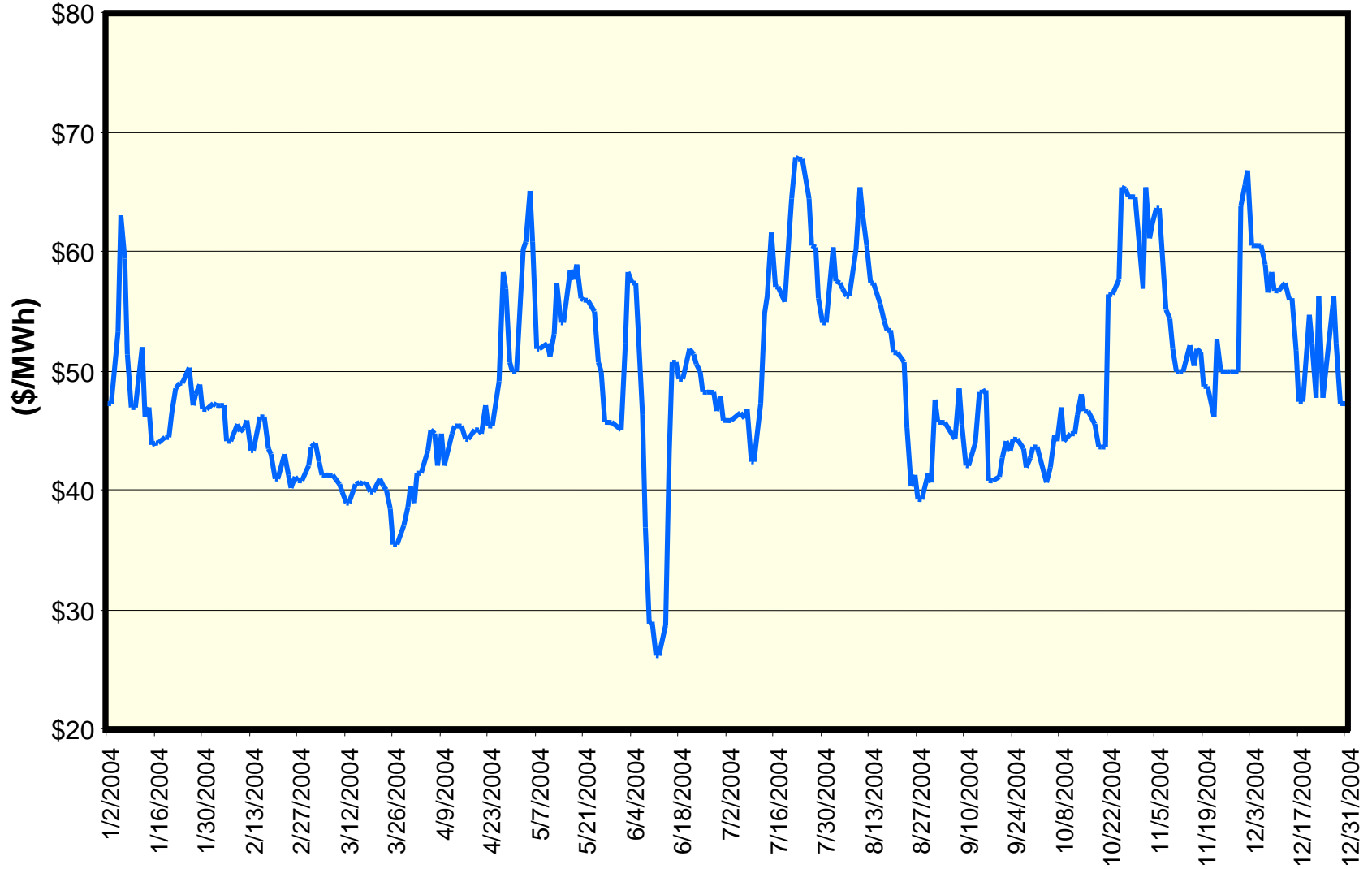
Palo Verde

Average Monthly On-Peak Prices 2004



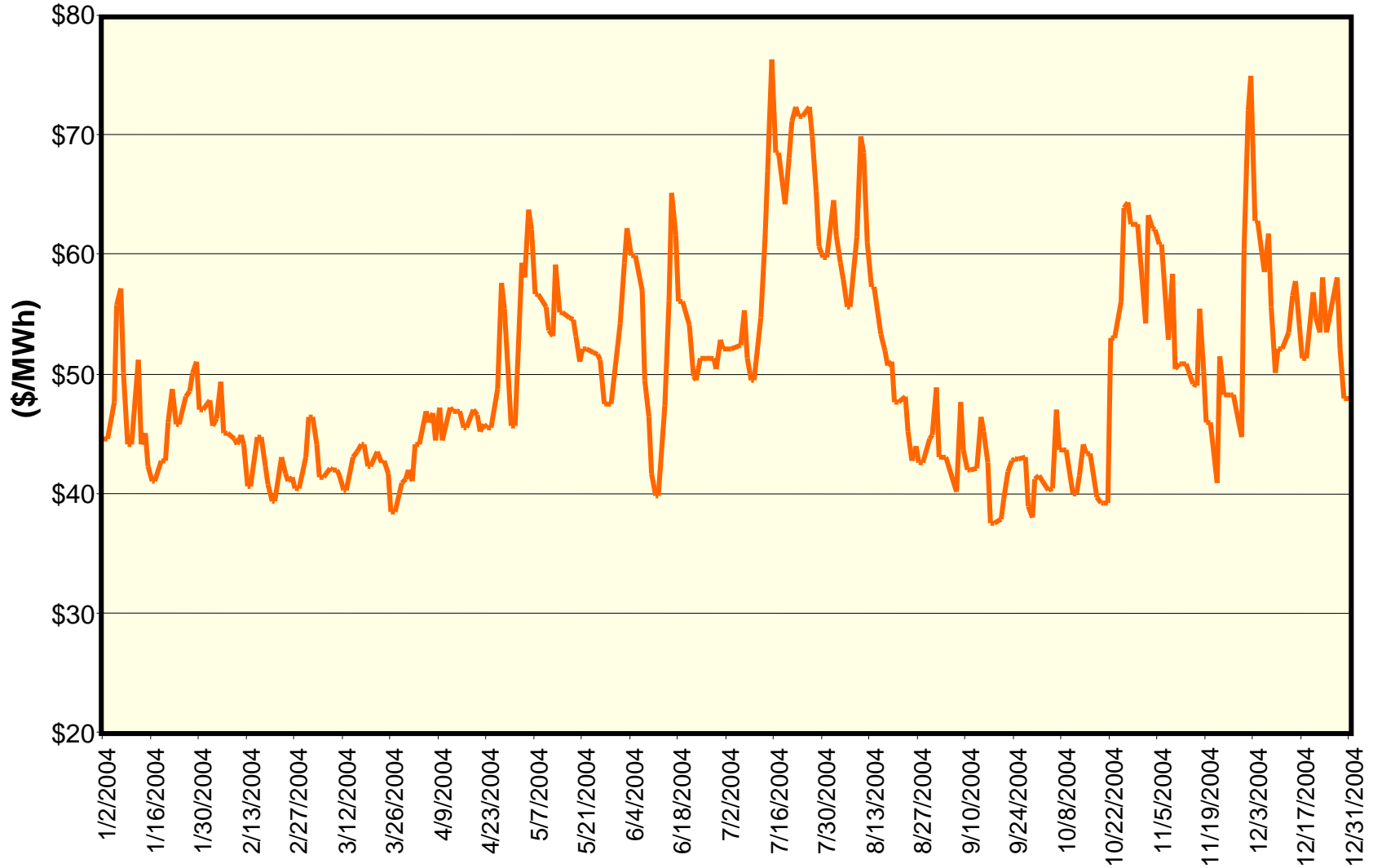
COB

Day Ahead On-Peak Prices 2004



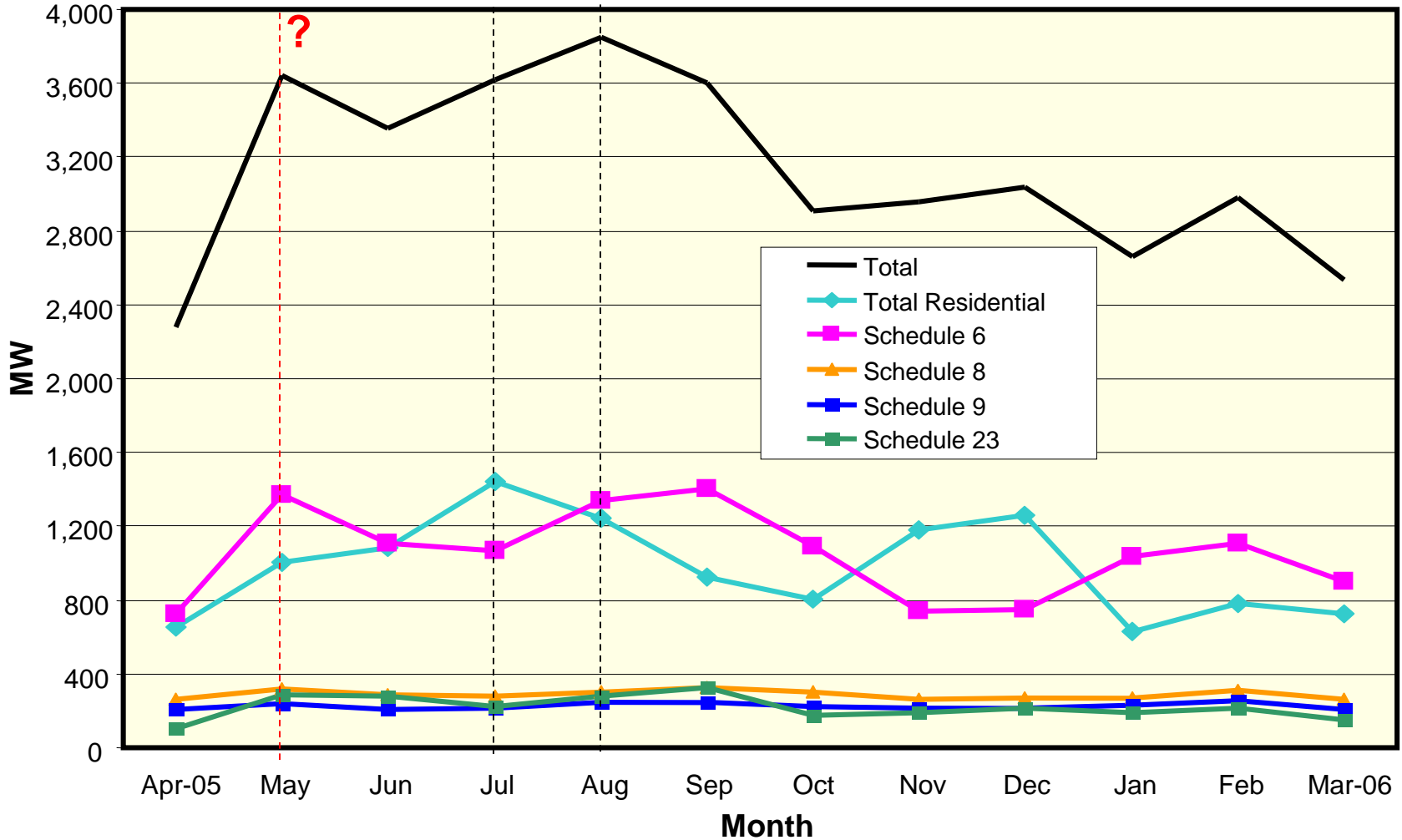
Palo Verde

Day Ahead On-Peak Prices 2004



PacifiCorp-Utah

Allocations Based on Peaks
(Vertical Slices)



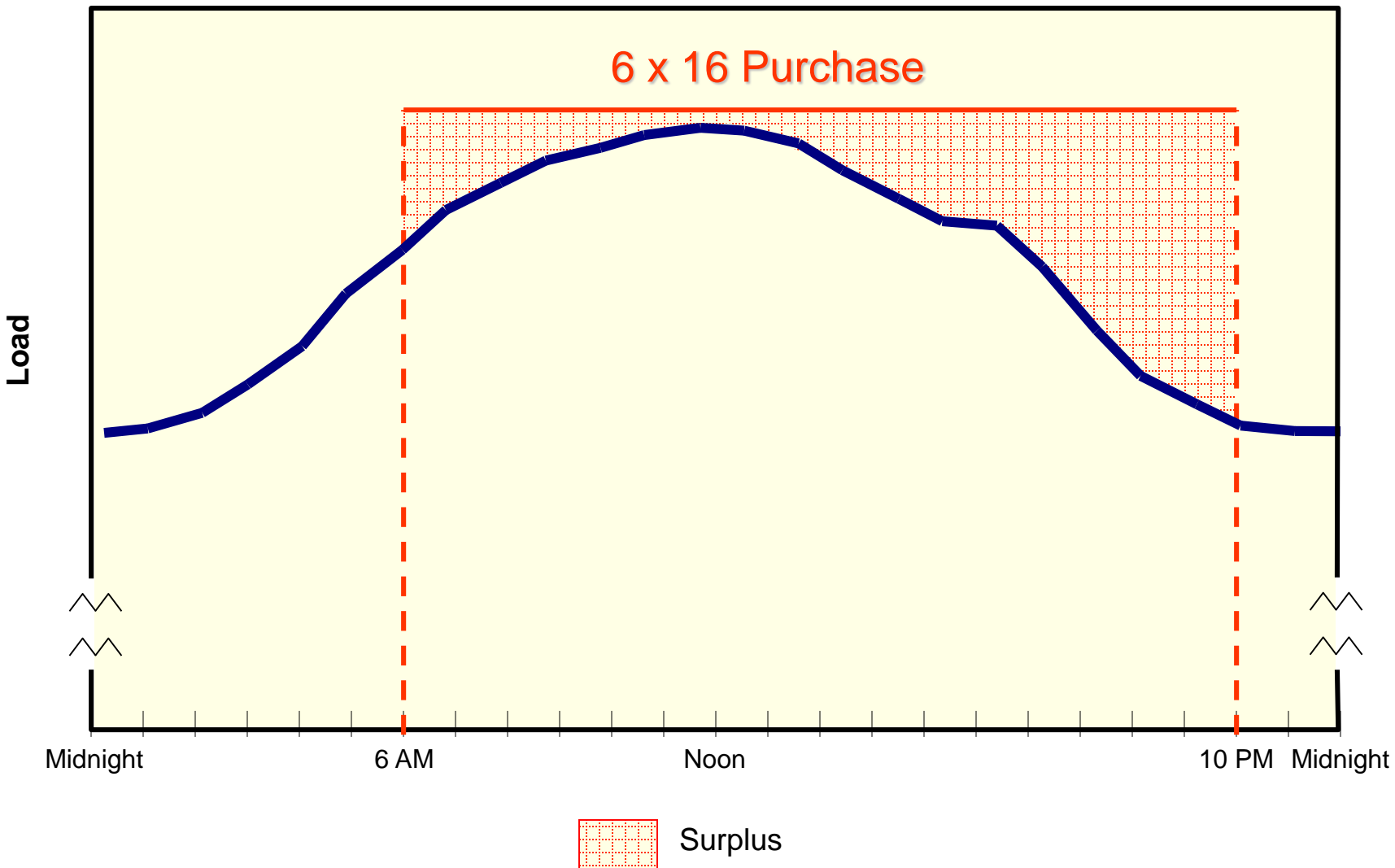
PacifiCorp-Utah

Resource Portfolio

- Base Load Coal
- Combined Cycle – Gas Fired
- Peaking Units – Gas Fired
- 24 x 7 x 52 Purchases
- Seasonal On-Peak Purchases
- Seasonal Off-Peak Purchases
- Hourly Purchases

PacifiCorp-Utah

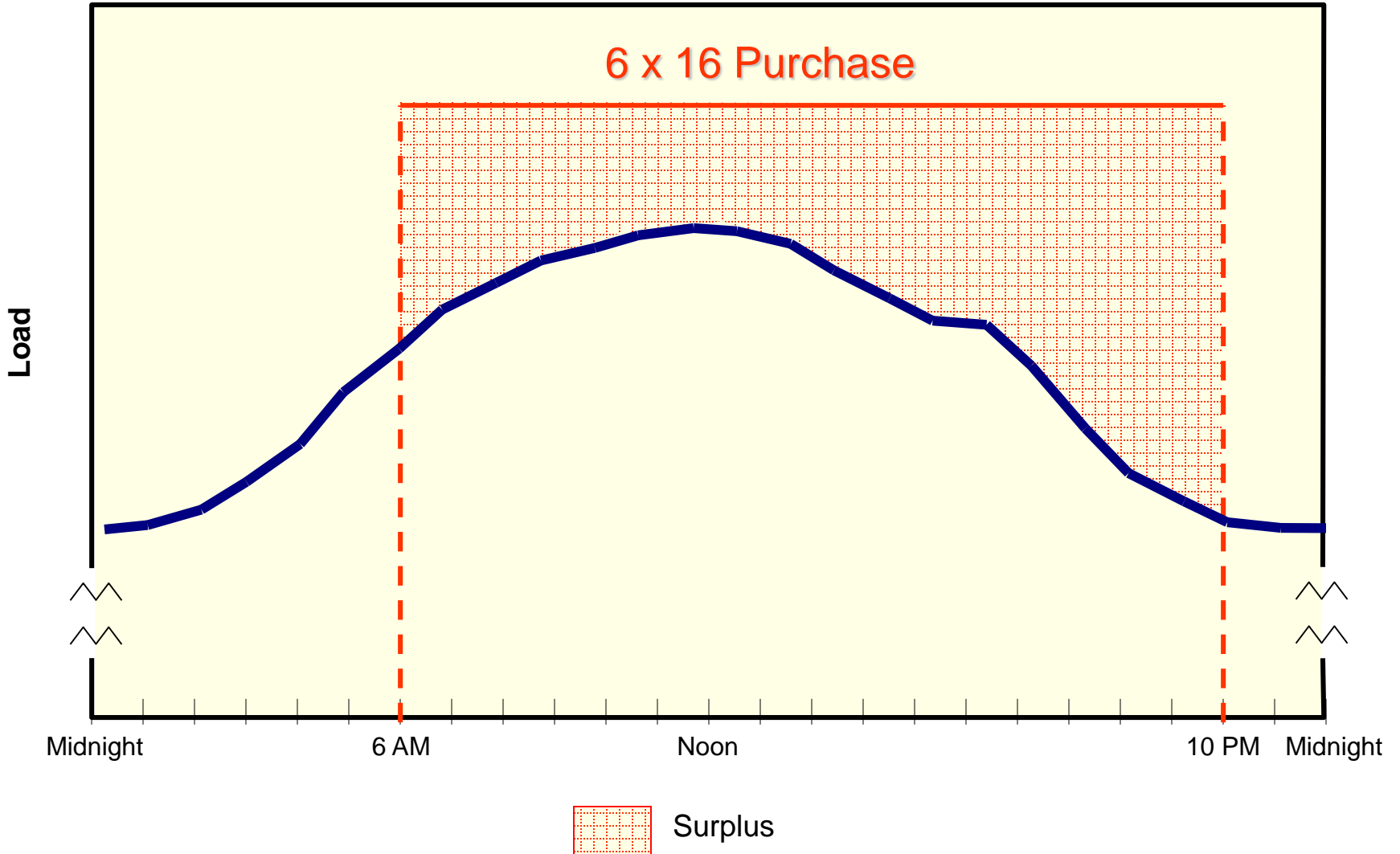
Block Purchases Day 1



PacifiCorp-Utah

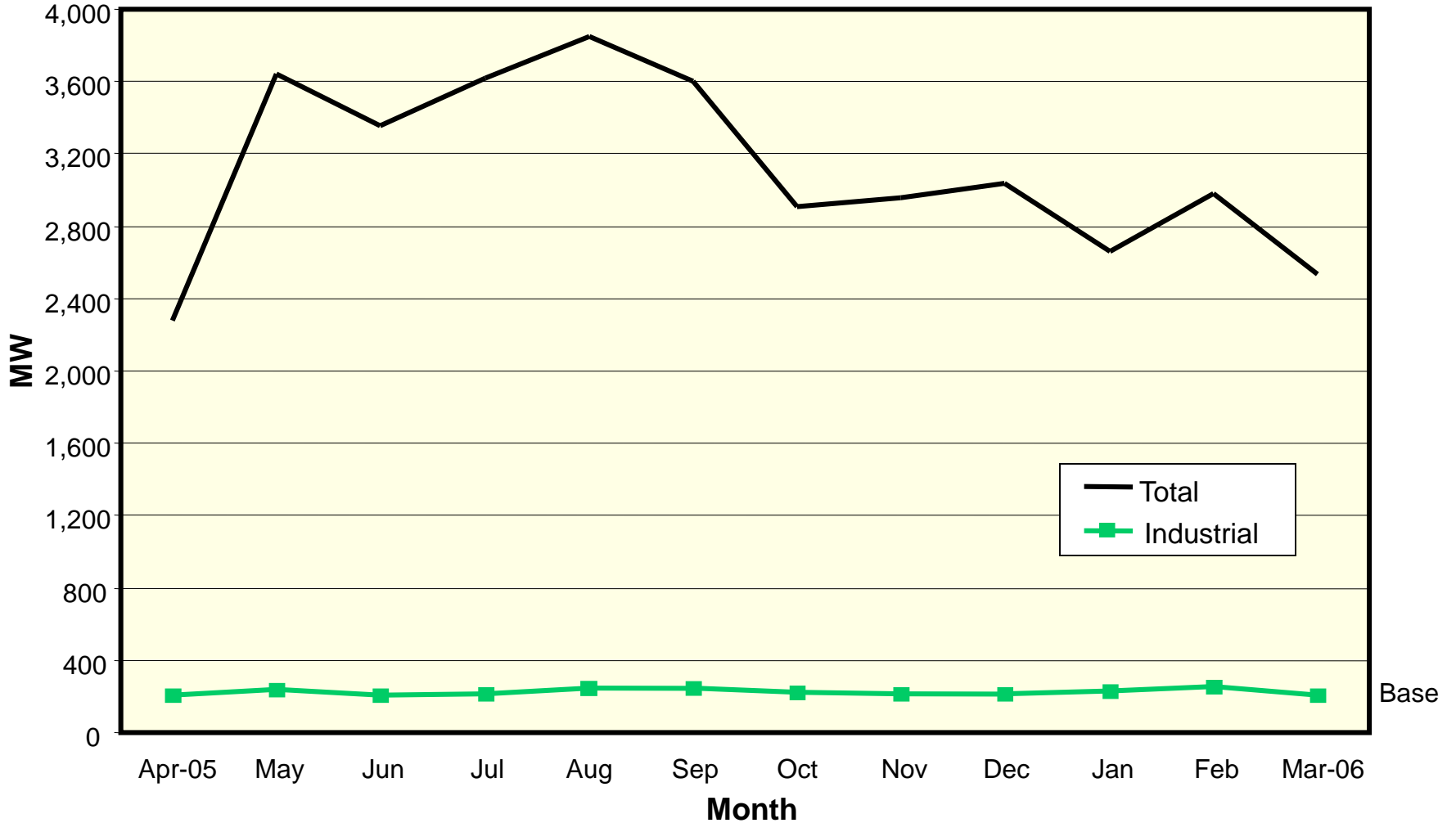
Block Purchases
Day 2

6 x 16 Purchase



PacifiCorp-Utah

Horizontal Analysis - Industrial



PacifiCorp-Utah

Horizontal Analysis – Peaking Classes

