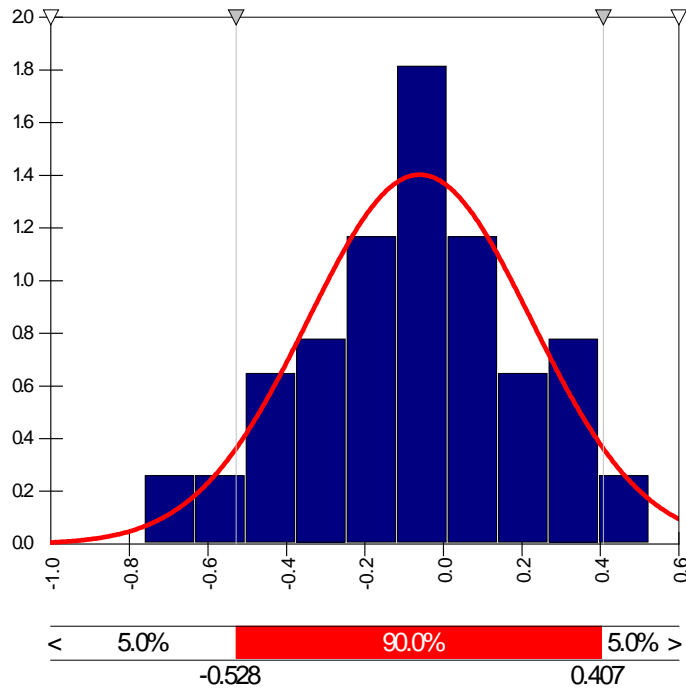
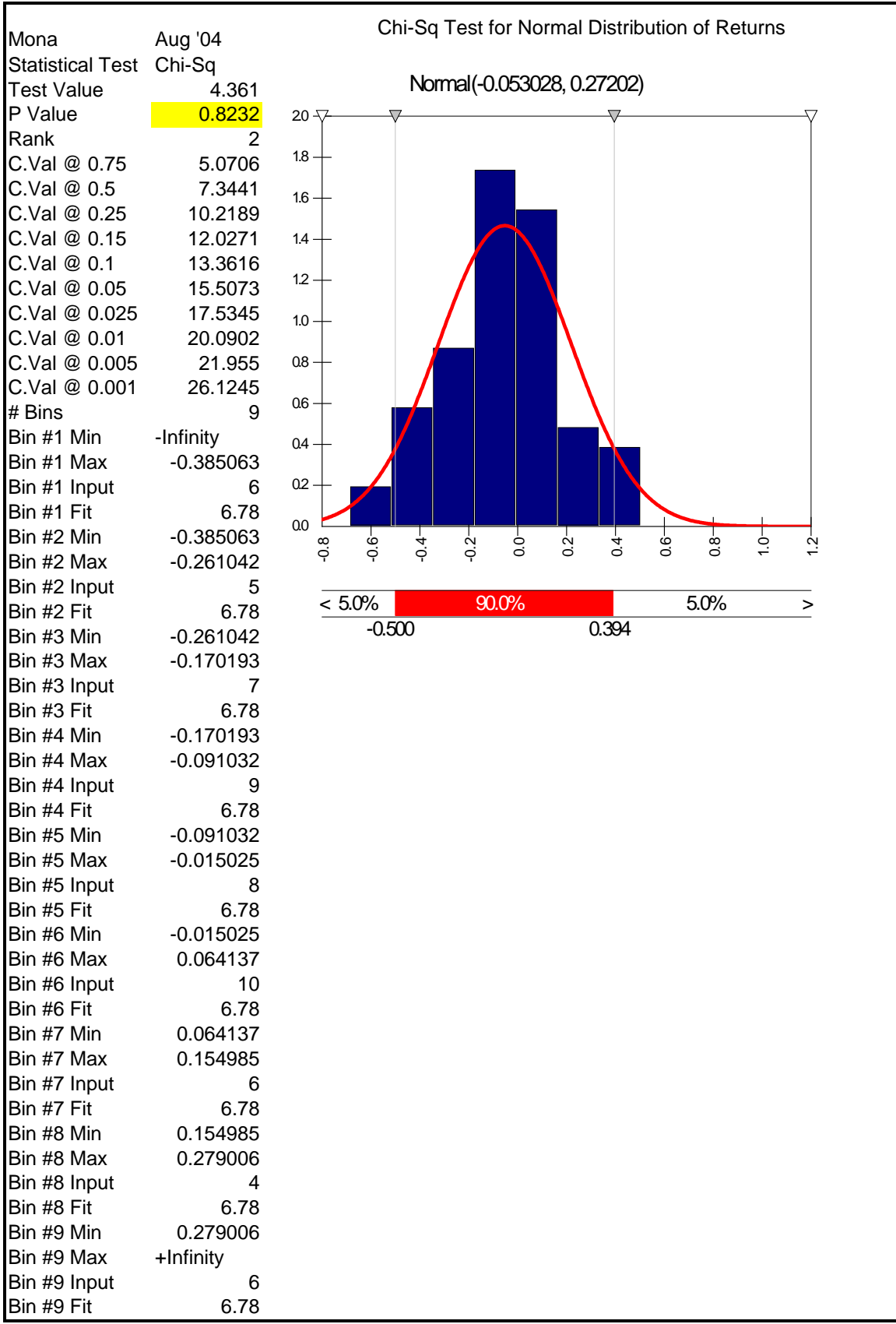


Mona	July '04
Statistical Test	Chi-Sq
Test Value	2.7
P Value	0.9518
Rank	2
C.Val @ 0.75	5.0706
C.Val @ 0.5	7.3441
C.Val @ 0.25	10.2189
C.Val @ 0.15	12.0271
C.Val @ 0.1	13.3616
C.Val @ 0.05	15.5073
C.Val @ 0.025	17.5345
C.Val @ 0.01	20.0902
C.Val @ 0.005	21.955
C.Val @ 0.001	26.1245
# Bins	9
Bin #1 Min	-Infinity
Bin #1 Max	-0.407701
Bin #1 Input	8
Bin #1 Fit	6.67
Bin #2 Min	-0.407701
Bin #2 Max	-0.278023
Bin #2 Input	6
Bin #2 Fit	6.67
Bin #3 Min	-0.278023
Bin #3 Max	-0.183029
Bin #3 Input	4
Bin #3 Fit	6.67
Bin #4 Min	-0.183029
Bin #4 Max	-0.100256
Bin #4 Input	6
Bin #4 Fit	6.67
Bin #5 Min	-0.100256
Bin #5 Max	-0.020781
Bin #5 Input	8
Bin #5 Fit	6.67
Bin #6 Min	-0.020781
Bin #6 Max	0.061992
Bin #6 Input	9
Bin #6 Fit	6.67
Bin #7 Min	0.061992
Bin #7 Max	0.156985
Bin #7 Input	6
Bin #7 Fit	6.67
Bin #8 Min	0.156985
Bin #8 Max	0.286664
Bin #8 Input	6
Bin #8 Fit	6.67
Bin #9 Min	0.286664
Bin #9 Max	+Infinity
Bin #9 Input	7
Bin #9 Fit	6.67

Chi-Sq Test for Normal Distribution of Returns

Normal(-0.060519, 0.28443)





Mona	Sept '04
Statistical Test	Chi-Sq
Test Value	7.429
P Value	0.4912
Rank	3
C.Val @ 0.75	5.0706
C.Val @ 0.5	7.3441
C.Val @ 0.25	10.2189
C.Val @ 0.15	12.0271
C.Val @ 0.1	13.3616
C.Val @ 0.05	15.5073
C.Val @ 0.025	17.5345
C.Val @ 0.01	20.0902
C.Val @ 0.005	21.955
C.Val @ 0.001	26.1245
# Bins	9
Bin #1 Min	-Infinity
Bin #1 Max	-0.433519
Bin #1 Input	6
Bin #1 Fit	7
Bin #2 Min	-0.433519
Bin #2 Max	-0.300499
Bin #2 Input	6
Bin #2 Fit	7
Bin #3 Min	-0.300499
Bin #3 Max	-0.203057
Bin #3 Input	7
Bin #3 Fit	7
Bin #4 Min	-0.203057
Bin #4 Max	-0.118152
Bin #4 Input	5
Bin #4 Fit	7
Bin #5 Min	-0.118152
Bin #5 Max	-0.036629
Bin #5 Input	13
Bin #5 Fit	7
Bin #6 Min	-0.036629
Bin #6 Max	0.048276
Bin #6 Input	9
Bin #6 Fit	7
Bin #7 Min	0.048276
Bin #7 Max	0.145717
Bin #7 Input	6
Bin #7 Fit	7
Bin #8 Min	0.145717
Bin #8 Max	0.278738
Bin #8 Input	6
Bin #8 Fit	7
Bin #9 Min	0.278738
Bin #9 Max	+Infinity
Bin #9 Input	5
Bin #9 Fit	7

Chi-Sq Test for Normal Distribution of Returns

