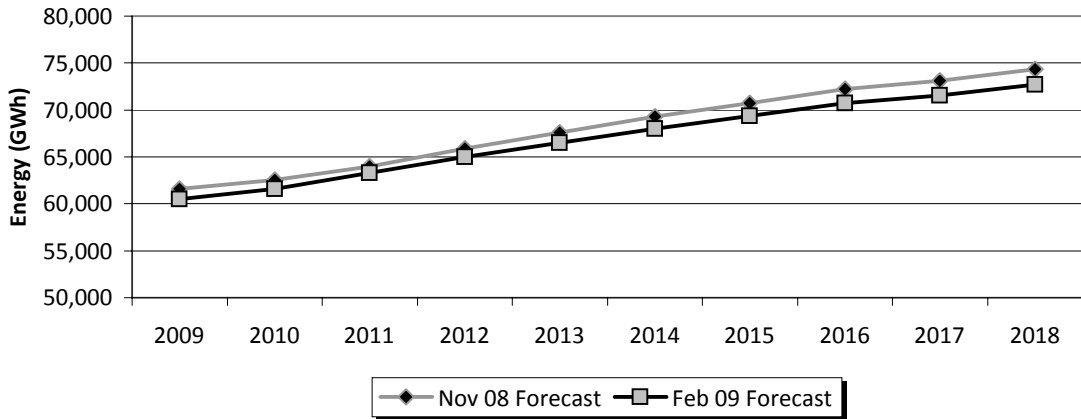


**APPENDIX B
PACIFICORP FORECAST COMPARISON
TOTAL REQUIREMENTS**

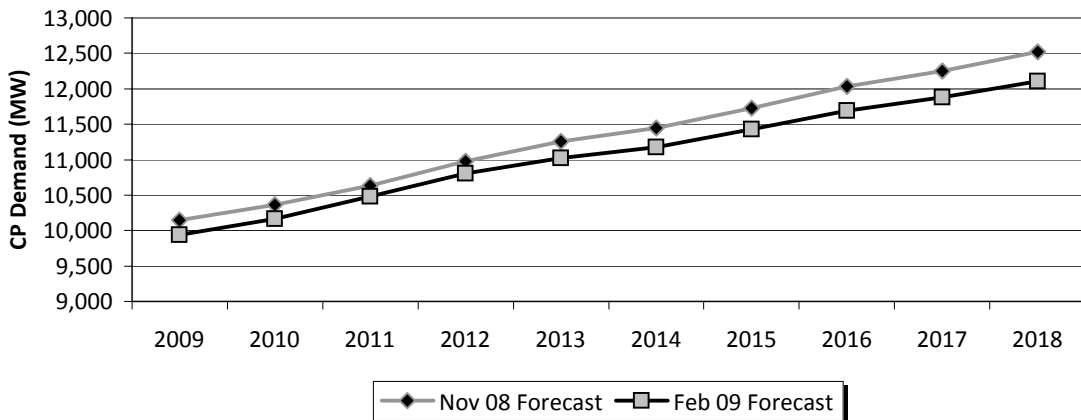
Year	Energy Requirements (MWh)			CP Demand Requirements (MW)		
	Nov. 08	Feb. 09	% Diff	Nov. 08	Feb. 09	% Diff
2009	61,558,392	60,513,585	-1.7%	10,143	9,941	-2.0%
2010	62,572,227	61,603,833	-1.5%	10,360	10,161	-1.9%
2011	63,979,543	63,263,930	-1.1%	10,631	10,481	-1.4%
2012	65,860,922	65,029,943	-1.3%	10,978	10,805	-1.6%
2013	67,602,494	66,466,245	-1.7%	11,261	11,024	-2.1%
2014	69,299,539	67,979,096	-1.9%	11,451	11,179	-2.4%
2015	70,735,798	69,346,652	-2.0%	11,730	11,425	-2.6%
2016	72,193,764	70,712,194	-2.1%	12,032	11,690	-2.8%
2017	73,110,441	71,559,345	-2.1%	12,251	11,876	-3.1%
2018	74,348,970	72,717,605	-2.2%	12,522	12,110	-3.3%

COMPOUND GROWTH RATES				
09-18	2.12%	2.06%	2.37%	2.22%
18-28	1.19%	1.10%	1.42%	1.19%

ENERGY REQUIREMENTS



CP DEMAND REQUIREMENTS

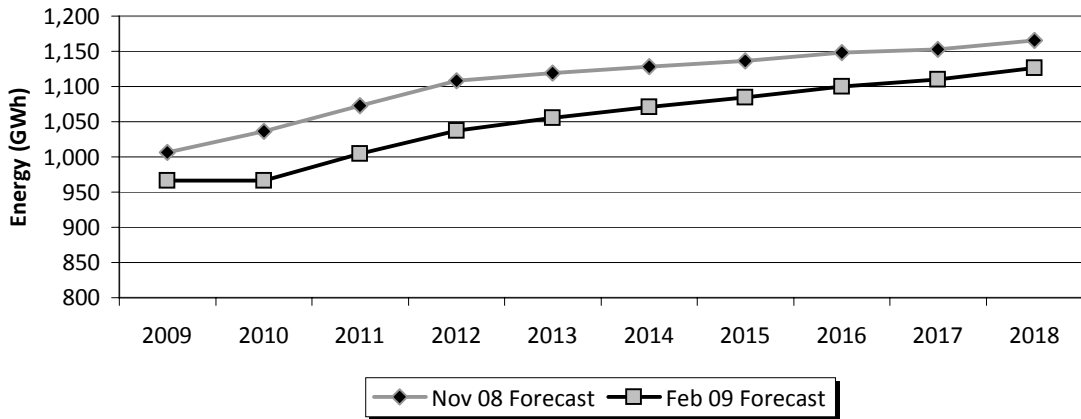


**APPENDIX B
PACIFICORP FORECAST COMPARISON
CALIFORNIA REQUIREMENTS**

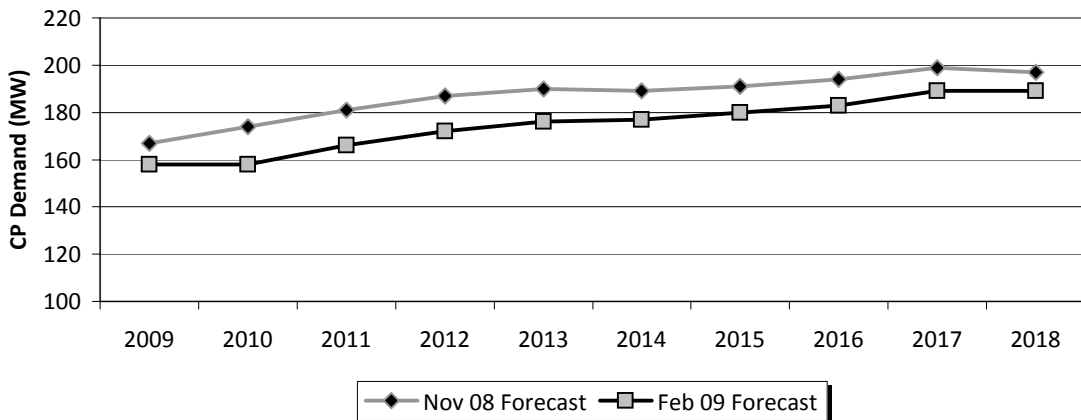
Year	Energy Requirements (MWh)			CP Demand Requirements (MW)		
	Nov. 08	Feb. 09	% Diff	Nov. 08	Feb. 09	% Diff
2009	1,006,036	966,290	-4.0%	167	158	-5.4%
2010	1,036,284	966,218	-6.8%	174	158	-9.2%
2011	1,072,927	1,004,954	-6.3%	181	166	-8.3%
2012	1,108,124	1,037,281	-6.4%	187	172	-8.0%
2013	1,119,431	1,055,642	-5.7%	190	176	-7.4%
2014	1,128,072	1,071,104	-5.1%	189	177	-6.3%
2015	1,136,689	1,084,175	-4.6%	191	180	-5.8%
2016	1,148,202	1,100,268	-4.2%	194	183	-5.7%
2017	1,153,152	1,109,880	-3.8%	199	189	-5.0%
2018	1,165,356	1,126,645	-3.3%	197	189	-4.1%

COMPOUND GROWTH RATES				
09-18	1.65%	1.72%	1.85%	2.01%
18-28	1.07%	1.28%	1.20%	1.45%

ENERGY REQUIREMENTS



CP DEMAND REQUIREMENTS



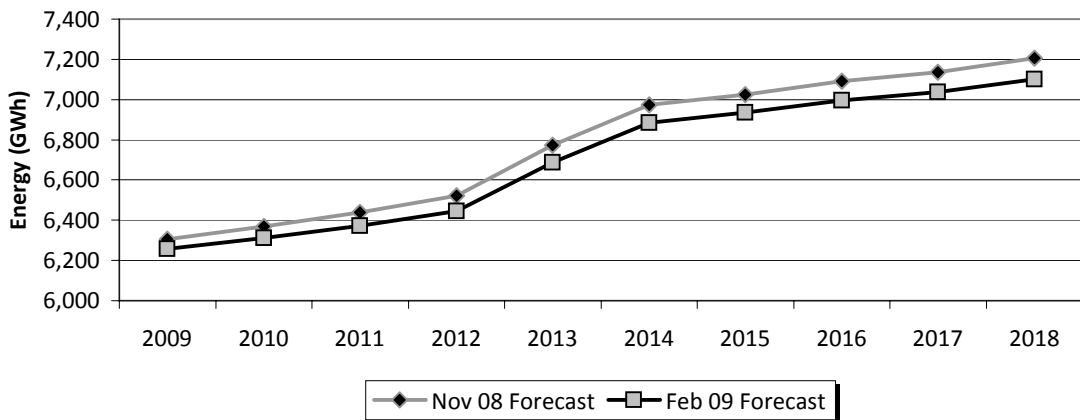
**APPENDIX B
PACIFICORP FORECAST COMPARISON
IDAHO REQUIREMENTS (INCLUDING SE-ID)**

Year	Energy Requirements (MWh)			CP Demand Requirements (MW)		
	Nov. 08	Feb. 09	% Diff	Nov. 08	Feb. 09	% Diff
2009	6,305,713	6,256,324	-0.8%	990	986	-0.4%
2010	6,368,908	6,312,750	-0.9%	1,026	1,017	-0.9%
2011	6,439,062	6,372,611	-1.0%	1,083	1,069	-1.3%
2012	6,522,230	6,445,142	-1.2%	1,147	1,128	-1.7%
2013	6,772,791	6,688,541	-1.2%	1,185	1,165	-1.7%
2014	6,974,035	6,884,692	-1.3%	1,093	1,078	-1.4%
2015	7,026,118	6,934,002	-1.3%	1,132	1,114	-1.6%
2016	7,091,201	6,994,747	-1.4%	1,205	1,182	-1.9%
2017	7,135,514	7,035,986	-1.4%	1,227	1,202	-2.0%
2018	7,204,497	7,099,724	-1.5%	1,259	1,231	-2.2%

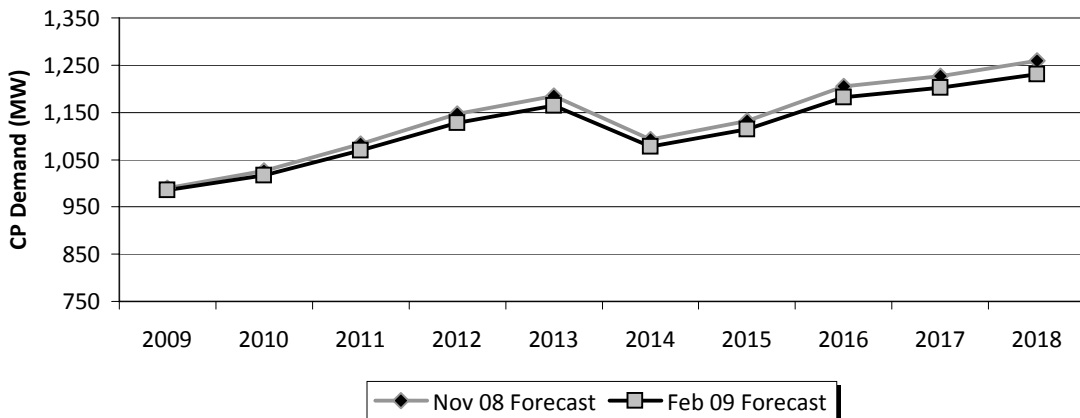
COMPOUND GROWTH RATES

09-18	1.49%	1.42%	2.71%	2.50%
18-28	0.93%	0.78%	0.88%	0.70%

ENERGY REQUIREMENTS



CP DEMAND REQUIREMENTS

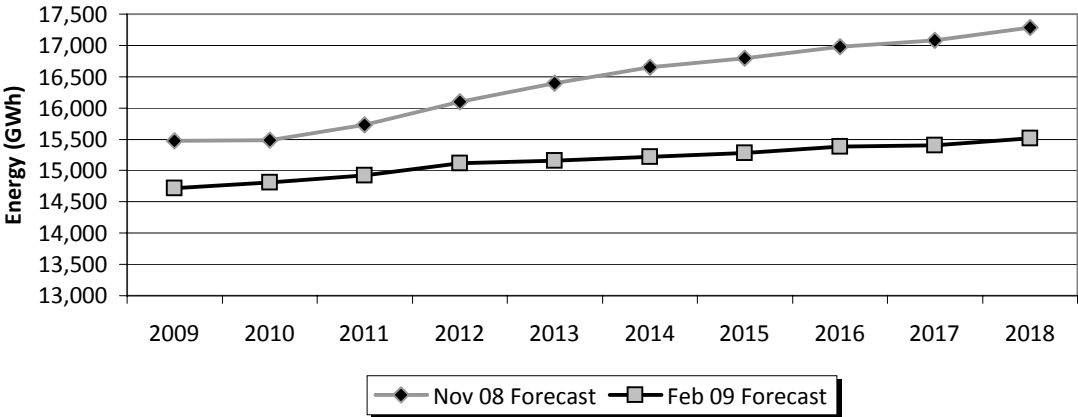


**APPENDIX B
PACIFICORP FORECAST COMPARISON
OREGON REQUIREMENTS**

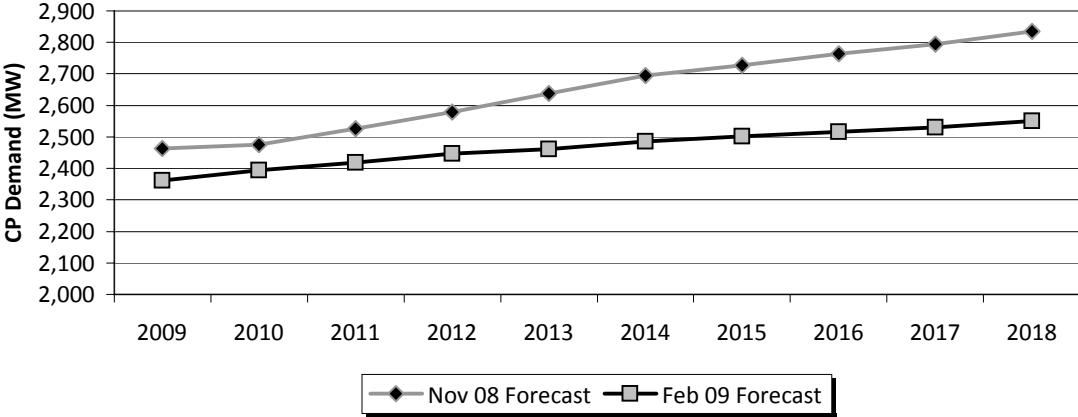
Year	Energy Requirements (MWh)			CP Demand Requirements (MW)		
	Nov. 08	Feb. 09	% Diff	Nov. 08	Feb. 09	% Diff
2009	15,475,197	14,717,735	-4.9%	2,463	2,362	-4.1%
2010	15,488,359	14,810,829	-4.4%	2,476	2,395	-3.3%
2011	15,733,361	14,921,509	-5.2%	2,526	2,419	-4.2%
2012	16,096,835	15,115,696	-6.1%	2,579	2,446	-5.2%
2013	16,395,770	15,159,619	-7.5%	2,638	2,462	-6.7%
2014	16,648,638	15,223,467	-8.6%	2,695	2,486	-7.8%
2015	16,790,823	15,283,484	-9.0%	2,728	2,501	-8.3%
2016	16,979,579	15,382,412	-9.4%	2,763	2,517	-8.9%
2017	17,080,573	15,402,000	-9.8%	2,795	2,530	-9.5%
2018	17,281,372	15,513,152	-10.2%	2,836	2,551	-10.0%

COMPOUND GROWTH RATES					
09-18	1.23%	0.59%	1.58%	0.86%	
18-28	1.09%	0.48%	1.41%	0.67%	

ENERGY REQUIREMENTS



CP DEMAND REQUIREMENTS

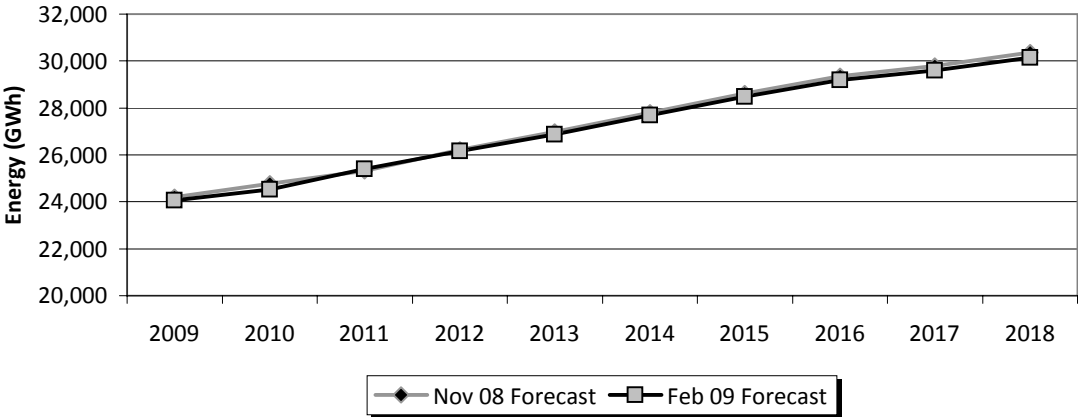


**APPENDIX B
PACIFICORP FORECAST COMPARISON
UTAH REQUIREMENTS**

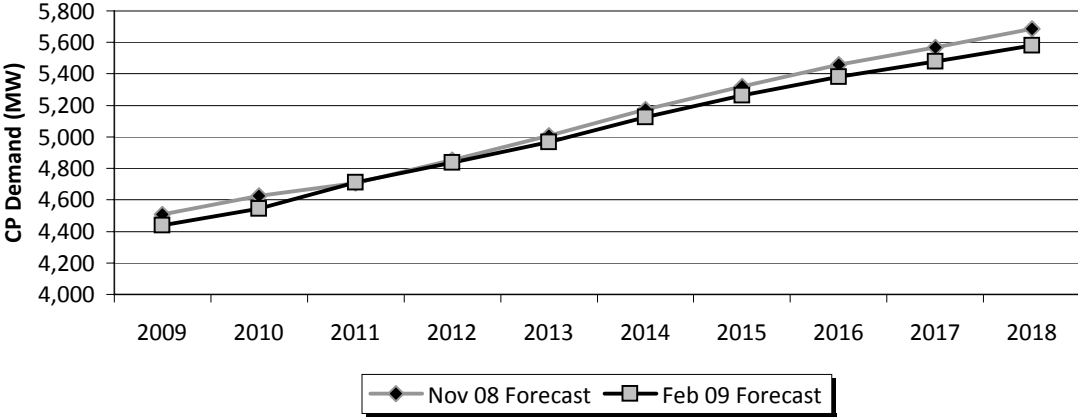
Year	Energy Requirements (MWh)			CP Demand Requirements (MW)		
	Nov. 08	Feb. 09	% Diff	Nov. 08	Feb. 09	% Diff
2009	24,211,643	24,066,263	-0.6%	4,509	4,440	-1.5%
2010	24,766,082	24,522,312	-1.0%	4,626	4,546	-1.7%
2011	25,331,349	25,404,577	0.3%	4,708	4,710	0.0%
2012	26,227,765	26,168,642	-0.2%	4,854	4,838	-0.3%
2013	26,990,389	26,884,446	-0.4%	5,008	4,968	-0.8%
2014	27,811,230	27,682,221	-0.5%	5,174	5,126	-0.9%
2015	28,631,507	28,492,384	-0.5%	5,322	5,262	-1.1%
2016	29,355,209	29,188,167	-0.6%	5,458	5,382	-1.4%
2017	29,791,003	29,596,661	-0.7%	5,568	5,478	-1.6%
2018	30,363,899	30,141,988	-0.7%	5,686	5,581	-1.8%

COMPOUND GROWTH RATES				
09-18	2.55%	2.53%	2.61%	2.57%
18-28	1.59%	1.47%	1.82%	1.55%

ENERGY REQUIREMENTS



CP DEMAND REQUIREMENTS

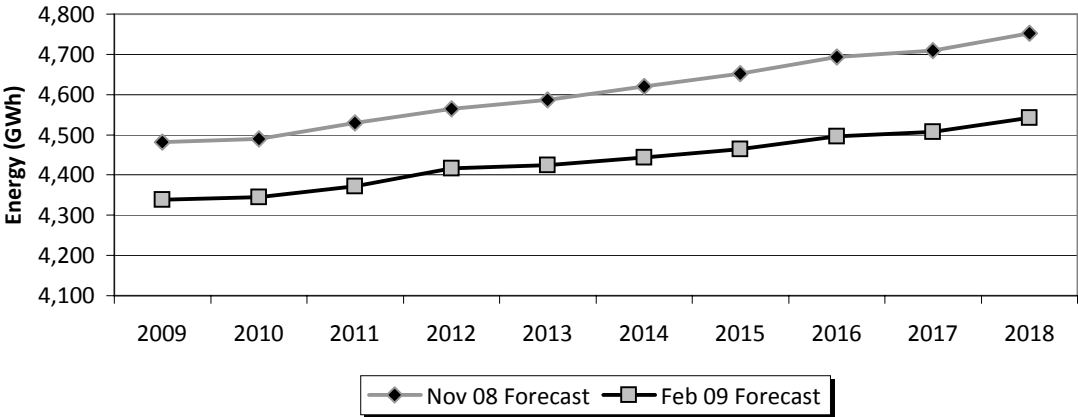


**APPENDIX B
PACIFICORP FORECAST COMPARISON
WASHINGTON REQUIREMENTS**

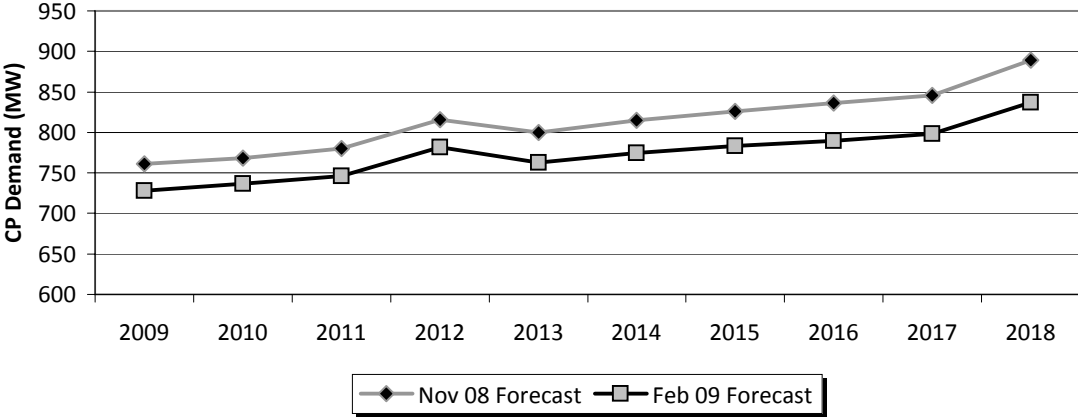
Year	Energy Requirements (MWh)			CP Demand Requirements (MW)		
	Nov. 08	Feb. 09	% Diff	Nov. 08	Feb. 09	% Diff
2009	4,481,972	4,339,279	-3.2%	761	728	-4.3%
2010	4,490,263	4,344,912	-3.2%	768	737	-4.0%
2011	4,528,860	4,371,402	-3.5%	780	746	-4.4%
2012	4,564,434	4,417,268	-3.2%	816	782	-4.2%
2013	4,586,107	4,424,099	-3.5%	800	763	-4.6%
2014	4,620,452	4,443,316	-3.8%	815	775	-4.9%
2015	4,652,542	4,463,835	-4.1%	826	783	-5.2%
2016	4,692,854	4,496,642	-4.2%	836	790	-5.5%
2017	4,709,745	4,506,713	-4.3%	846	798	-5.7%
2018	4,752,289	4,542,282	-4.4%	889	837	-5.8%

COMPOUND GROWTH RATES					
09-18	0.65%	0.51%	1.74%	1.56%	
18-28	0.89%	0.62%	1.11%	0.75%	

ENERGY REQUIREMENTS



CP DEMAND REQUIREMENTS

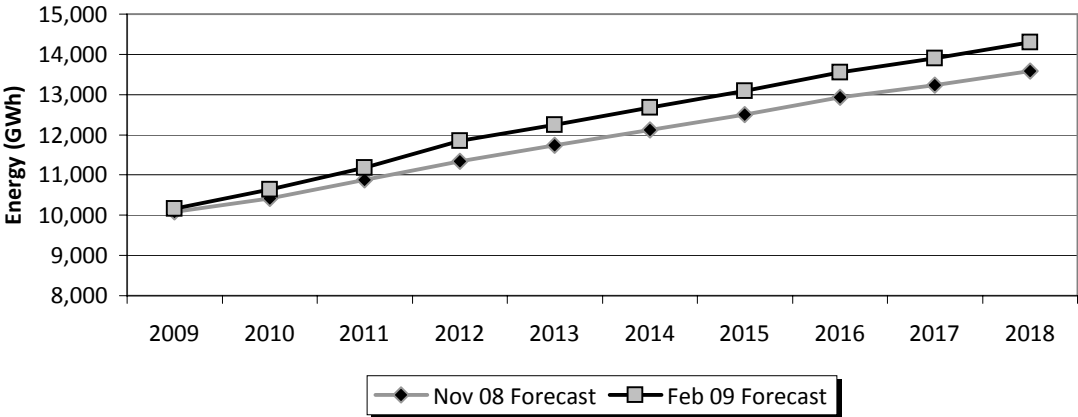


**APPENDIX B
PACIFICORP FORECAST COMPARISON
WYOMING REQUIREMENTS**

Year	Energy Requirements (MWh)			CP Demand Requirements (MW)		
	Nov. 08	Feb. 09	% Diff	Nov. 08	Feb. 09	% Diff
2009	10,077,831	10,167,695	0.9%	1,253	1,268	1.2%
2010	10,422,330	10,646,811	2.2%	1,290	1,307	1.3%
2011	10,873,984	11,188,878	2.9%	1,354	1,371	1.3%
2012	11,341,534	11,845,914	4.4%	1,394	1,439	3.2%
2013	11,738,006	12,253,897	4.4%	1,440	1,490	3.5%
2014	12,117,111	12,674,296	4.6%	1,485	1,538	3.6%
2015	12,498,120	13,088,772	4.7%	1,530	1,585	3.6%
2016	12,926,718	13,549,959	4.8%	1,577	1,635	3.7%
2017	13,240,453	13,908,106	5.0%	1,616	1,678	3.8%
2018	13,581,557	14,293,815	5.2%	1,656	1,722	4.0%

COMPOUND GROWTH RATES				
09-18	3.37%	3.86%	3.15%	3.46%
18-28	0.64%	1.27%	0.71%	1.32%

ENERGY REQUIREMENTS



CP DEMAND REQUIREMENTS

