

**BEFORE THE PUBLIC SERVICE COMMISSION OF UTAH**

**IN THE MATTER OF THE APPLICATION )  
OF ROCKY MOUNTAIN POWER FOR )  
APPROVAL OF A GENERAL RATE )  
INCREASE OF \$232.4 MILLION PER YEAR )  
OR 13.7 PERCENT )  
)  
)  
)  
)**

**DOCKET NO. 10-035-124**

**ERRATA TO PUBLIC  
DIRECT TESTIMONY OF**

**MARK T. WIDMER**

**ON BEHALF OF**

**UTAH INDUSTRIAL ENERGY CONSUMERS (UIEC)**

1 **Q. PLEASE STATE YOUR NAME AND BUSINESS ADDRESS?**

2 A. My name is Mark T. Widmer and my business address is 27388 S.W. Ladd Hill Road,  
3 Sherwood, Oregon 97140.

4

5 **Q. PLEASE STATE YOUR OCCUPATION, EMPLOYMENT, AND ON WHOSE**  
6 **BEHALF YOU ARE TESTIFYING.**

7 A. I am a utility regulatory consultant and Principal of Northwest Energy Consulting, LLC  
8 (“NWECC”). I am appearing on behalf of the Utah Industrial Energy Consumers  
9 (“UIEC”).

10

11 **Q. PLEASE SUMMARIZE YOUR QUALIFICATIONS AND APPEARANCES.**

12 A. With NWECC, I provide regulatory consulting services related to electric utility  
13 operations, energy cost recovery issues, revenue requirements and avoided cost pricing  
14 for qualifying facilities. Since forming NWECC in 2008, I have testified on recovery of  
15 net power costs in general rate cases and power cost adjustment mechanism proceedings,  
16 avoided cost methodologies and resource prudence. I have also participated in fuel  
17 recovery cases. Prior to forming NWECC, I was employed by PacifiCorp. While  
18 employed by PacifiCorp, I participated in and filed testimony on power cost issues in  
19 numerous dockets in Utah, Oregon, Wyoming, Washington, Idaho and California  
20 jurisdictions over 10 plus years. At the time of my departure from PacifiCorp, I was  
21 director of Net Power Costs. My full qualifications and appearances are provided as  
22 Exhibit \_\_ (MTW-1).

1 **Q. WHAT IS THE PURPOSE OF YOUR TESTIMONY?**

2 A. My testimony addresses PacifiCorp's Generation and Regulation Initiatives Decision  
3 ("GRID") model and the normalized Net Power Costs ("NPC") GRID produced for the  
4 forecast period ending June 30, 2012.

5  
6 **Q. PLEASE SUMMARIZE YOUR TESTIMONY.**

7 A. My testimony presents 21 adjustments, which total approximately \$85.2 million total  
8 Company and \$36.6 million for Utah. These adjustments, which are discussed in my  
9 following testimony, are made to reflect reasonable results and operation of PacifiCorp's  
10 system, match costs with benefits, exclude costs which should not be recoverable, and  
11 make corrections. My adjustments are shown in Table 1. Following Table 1 below, each  
12 of my adjustments is summarized and then explained in greater detail in the remainder of  
13 my testimony.

14 It should also be noted that these adjustments could also be categorized as decision  
15 modeling errors on how and what to model in GRID, a workaround for a logic error in  
16 how GRID uses forced outage rate inputs calculated by the Company, correction of  
17 GRID input errors, used and useful adjustments, updates for new and revised contracts  
18 and a prudence adjustment for natural gas swaps. It should also be noted that GRID  
19 continues to require workarounds, the most notable of which is the screening adjustments  
20 for errors in GRID's commitment logic. If GRID is going to continue to be used for rate  
21 setting it should be updated to eliminate the need for workarounds.

Table 1			
Summary of Recommended Adjustments - \$			
	Total Company	Primary Recommendation Utah Est.	Alternative Recommendations Utah Est.
GRID (Net Variable Power Cost Issues)			
PacifiCorp Request NPC	1,521,262,900	649,100,000	
ADJUSTMENTS			
1 Cal ISO Wheeling and Service Fees	(4,196,047)	(1,801,590)	
2 Reserve Shutdowns	(933,486)	(400,796)	
3 Gadsby 4, 5 & 6 Not Must Run	(3,357,276)	(1,441,460)	
4 Morgan Stanley Calls	(2,100,000)	(901,643)	
5 Short-Term Transmission	(120,775)	(51,855)	
6 Black Hills Shaping	(755,522)	(324,387)	
7 Nameplate Corrections	(548,943)	(235,691)	
8 DC Intertie Wheeling	(4,664,535)	(2,002,737)	
9 Centralia PTP Wheeling	(10,934,136)	(4,694,615)	
10 Hydro Normalization Period	(457,309)	(196,347)	
11 Bridger & Huntington Fuel Price Corrections	(2,428,374)	(1,042,632)	
12 Bridger Fines and Citations	(303,225)	(130,191)	
13 Naughton 3 Outage	(523,141)	(224,613)	
14 Bear River Hydro Normalization	(1,346,069)	(577,940)	
14a Bear River Reserves	(653,748)		(280,689)
15 NVE Sale	(1,578,932)	(677,921)	
16 BPA Network Load Wheeling	(239,646)	(102,893)	
17 Market Caps	(5,476,822)	(2,351,496)	
18 Roseburg Forest Products Correction	(559,643)	(240,285)	
19 Threemile Canyon	211,364	90,750	
20 Monsanto Interruptible Products	797,040	342,212	
21 Natural Gas Swaps	(45,716,610)	(19,628,609)	
Total Adjustments Primary Recommendation	(85,232,086)	(36,594,737)	(280,689)
Est. Allowed - NPC Primary Recommendation	1,436,030,814	612,505,263	
Est. Utah Jurisdiction			
SE: 42.5867%			
SG: 43.2841%			

2

3 **Q. ALL OF YOUR ADJUSTMENTS ARE RELATED TO NPC. BEFORE YOU**  
 4 **DISCUSS YOUR ADJUSTMENTS, PLEASE EXPLAIN NPC AND ITS**  
 5 **IMPORTANCE.**

1 A. NPC is defined as the sum of purchased power expense, wheeling expense and fuel  
2 expense less wholesale revenues. The determination of NPC is very important because it  
3 represents one of PacifiCorp's largest single revenue requirements components and  
4 establishes the EBA baseline. NPC is calculated with PacifiCorp's GRID production  
5 dispatch model.

6

7

## SUMMARY OF ADJUSTMENTS

8

### **Adjustment 1. CAL ISO TRANSMISSION**

9 Cal ISO wheeling expenses and fees are incurred when PacifiCorp uses the Cal  
10 ISO system to sell power into the Cal ISO. In doing so, PacifiCorp captures higher  
11 wholesale margins than would otherwise be captured using their existing transmission  
12 rights. PacifiCorp's filing included Cal ISO wheeling expenses and fees, but balanced  
13 and optimized the system with PacifiCorp's existing transmission rights because Cal ISO  
14 transmission capability was not modeled. Therefore, while the model includes the costs  
15 of using the Cal ISO system, NPC does not capture the corresponding incremental  
16 benefits associated with the use of the Cal ISO system. My adjustment conservatively  
17 imputes a value equal to the Cal ISO wheeling expenses and fees included in the filing to  
18 ensure costs are reasonable and match costs and benefits. This adjustment was recently  
19 adopted by the Idaho Public Utility Commission in Idaho Docket No. PAC-E-10-07.

20

21

### **Adjustment 2. RESERVE SHUTDOWNS**

22

23

GRID utilizes thermal plant forced outage rates in a manner that is inconsistent  
with PacifiCorp's calculation of forced outage rates. Forced outage rates used as an input

1 to GRID are calculated after reserve shutdowns, while GRID uses the forced outage rates  
2 as if they were calculated before reserve shutdowns. This causes an overstatement of  
3 generation lost due to forced outages. Put another way, this disconnect results in an  
4 understatement of thermal generation. I propose that forced outage rates used in GRID  
5 should be calculated prior to reserve shutdowns to correct this problem.

6  
7 **Adjustment 3. GADSBY CT MUST RUN**

8 Gadsby units 4, 5, and 6 were modeled as must run units in GRID to provide  
9 reserves for wind integration. This is certainly not the case in actual operations and  
10 implies that the reserve requirements calculated by the wind integration study are too  
11 high. Therefore, the must run feature in GRID should be turned off.

12  
13 **Adjustment 4. MORGAN STANLEY CALL OPTIONS**

14 NPC includes two out of the money call option contracts that had very little  
15 chance of providing a benefit to customers at the time of contract execution in 2005. In  
16 fact, if these contracts were to provide a benefit, it is likely the benefit would have  
17 accrued to shareholders because PacifiCorp did not have a Utah authorized Energy  
18 Balancing Account (EBA) at the time of contract execution. To ensure costs are  
19 reasonable, call option contracts should be removed from NPC if their removal reduces  
20 NPC, which is the case in this docket. Based on this information, I recommend that these  
21 speculative contracts be removed from NPC.

1           **Adjustment 5.           SHORT-TERM TRANSMISSION**

2           Short-term transmission capability has been modeled to exclude all transmission  
3 links below 1 aMW. However, in this test year the exclusion eliminates approximately  
4 12 aMW of transmission capability used to balance and optimize PacifiCorp's system.  
5 Accordingly, I propose an adjustment which would incorporate most of this transmission  
6 capability in GRID to better match operations.

7  
8           **Adjustment 6.           BLACK HILLS SHAPING**

9           PacifiCorp models the Black Hills wholesale sales contract on the faulty  
10 assumption that Black Hills will dispatch the contract during the highest cost hours.  
11 Historical dispatch demonstrates that is not the case. I recommend that the contract be  
12 dispatched based on the historical 48-month average ended June 2010. This adjustment  
13 was recently adopted by the Idaho Commission in Idaho Docket No. PAC-E-10-07.

14  
15           **Adjustment 7.           NAMEPLATE CORRECTION**

16           Filed NPC included incorrect nameplate capacities for Hunter 3, Craig 1 and  
17 Hunter 2. This adjustment corrects the nameplate capacities for each unit.

18  
19           **Adjustment 8.           DC INTERTIE WHEELING**

20           The DC Intertie agreement is not used and useful for the test year as NPC does  
21 not include any transactions at the Nevada Oregon Border and therefore does not use the  
22 contracted path. This conclusion is consistent with the findings in PacifiCorp's most

1 recent Washington general rate case order.<sup>1</sup> So, I recommend that the contract be  
2 excluded from NPC for this docket. If PacifiCorp can demonstrate the contract or a  
3 portion of the contract is used and useful based on actual information, they should be  
4 allowed to recover costs for the portion that is proven to be used and useful through EBA  
5 proceedings.

6  
7 **Adjustment 9. CENTRALIA WHEELING**

8 Through discovery and PacifiCorp's filing it is clear that the Centralia PTP  
9 transmission agreement is extremely underutilized as only 30 MW of the contract  
10 capacity are being utilized during the test year. In fact, PacifiCorp has been trying to sell  
11 the unused capacity since mid-2009. So, 95.3% of the contract is not used and useful for  
12 customers. Accordingly, I recommend that 95.3% of the contract expense be excluded  
13 from NPC.

14  
15 **Adjustment 10. HYDRO OUTAGE RATES**

16 In this docket PacifiCorp normalized hydro forced and planned outages over the  
17 48-month period ended December 2009. This period is inconsistent with the 48-month  
18 period ended June 2010 used for normalization of thermal forced and planned outages.  
19 For consistency I recommend that hydro forced and planned outages should be  
20 normalized over the 48-month period ended June 2010. It should also be noted that  
21 PacifiCorp has indicated that they will make this correction in rebuttal testimony.

22  

---

<sup>1</sup> Washington Docket UE 100740, Order 06



1           **Adjustment 11.           JIM BRIDGER AND HUNTINGTON COAL PRICES**

2                     Filed NPC included incorrect coal fuel prices for Jim Bridger and Huntington  
3                     generation plants. This adjustment corrects the coal prices so that they are what were  
4                     intended to be included in the filing.

5  
6           **Adjustment 12.           JIM BRIDGER FINES AND CITATIONS**

7                     Fuel expenses include the cost of fines and citations for Bridger Coal Company.  
8                     These costs should have been booked below the line and charged to shareholders as was  
9                     done for the Energy West citation expense. Accordingly, I recommend that these costs  
10                    be excluded from NPC.

11  
12          **Adjustment 13.           NAUGHTON 3 OUTAGE**

13                    The Company collected \$500,000 of liquidated damage payments from its  
14                    contractor for failure to complete the contract on schedule due to imprudent work.  
15                    PacifiCorp seeks to take another bite out of the apple by requesting recovery of this  
16                    imprudent outage again by including the outage in NPC. Accordingly, I recommend that  
17                    this imprudent outage be excluded from NPC.

18  
19          **Adjustment 14.           BEAR RIVER NORMALIZATION**

20                    PacifiCorp's modeling is an exercise in cherry picking, which excludes 11 flood  
21                    control generation years out of the 30 water years used to normalize generation. This  
22                    essentially results in a worst case forecast. Mr. Duvall suggests that this normalization  
23                    method is reasonable because Bear River has experienced a long term drought, which he

1 expects to continue and because the operating agreements prohibit flood control  
2 generation when Bear Lake is below a certain level during actual operations. This  
3 conclusion is flawed because (a) the operating agreements have no impact on  
4 normalization and (b) the methodology used is inconsistent with the methodology used  
5 for all other hydro projects, is not well thought out, and is not symmetrical. Furthermore,  
6 it appears the drought is over as snowpack and stream flows are expected to be well  
7 above average for the April through September reporting period. For these reasons, Bear  
8 River Generation should be modeled with the full complement of historical water years,  
9 not as a worst case scenario.

10  
11 **Adjustment 15. NV ENERGY (NVE) WHOLESALE SALE**

12 This adjustment is based on a new contract. It includes, however, only the energy  
13 component of this new wholesale sales contract with NVE in GRID, because renewable  
14 energy certificates (RECs) are not modeled in GRID, and we do not have a value for  
15 them.

16  
17 **Adjustment 16. BPA VANTAGE NETWORK WHEELING**

18 During the preparation of PacifiCorp's filing a new BPA network load forecast  
19 was released that superseded the one included in PacifiCorp's filing. This adjustment  
20 includes the new BPA network load forecast and decreases wheeling expense. The  
21 impact is shown on Table 1.

1           **Adjustment 17.           GRID MAJOR MARKET CAPS**

2           Previously, the Utah Commission adopted the use of graveyard market caps to  
3           limit sales of excess coal generation. In this case, PacifiCorp proposes the use of HLH  
4           and LLH market caps for all wholesale markets. Across the board use of market caps is  
5           not used in PacifiCorp’s own internal modeling, is not supported by the filed NPC  
6           because proposed coal generation is below the 48-month historical average and is  
7           inconsistent with the Energy Gateway transmission project. For these reasons, I  
8           recommend the elimination of market caps for all markets except the illiquid Mona  
9           market.

10  
11          **Adjustment 18.           ROSEBURG FOREST PRODUCTS**

12           This adjustment corrects the volume of the purchase power contract.

13  
14          **Adjustment 19.           THREEMILE CANYON**

15           This adjustment includes the extension of this wind qualifying facility purchase  
16           power contract.

17  
18          **Adjustment 20.           MONSANTO INTERRUPTIBLE PRODUCTS**

19           This adjustment includes the new contract terms for the interruptible products  
20           purchased from Monsanto.



1 included in the filing. So, there is absolutely no benefit associated with those wheeling  
2 fees and expenses included in the filing.

3  
4 **Q. WHY DOES PACIFICORP EXECUTE TRANSACTIONS WITH CAL ISO?**

5 A. Wholesale transactions with the Cal ISO provide the highest level of margin available at  
6 the time of execution, notwithstanding the fact that they incur incremental wheeling  
7 expenses and fees when those transactions are executed. This is explained in  
8 PacifiCorp's response to WIEC 6.11 from Wyoming Docket No. 20000-384-ER-10,  
9 which states:

10 The Company executes the most economical transactions available. Only  
11 if the "all in" cost of a transaction that will incur a new transmission wheel  
12 or fee is more economical than an available transaction that has no  
13 additional transmission cost (e.g. on existing rights) will that transaction  
14 be chosen. Wheeling expenses and fees are considered when choosing  
15 among available transactions.

16  
17 Essentially, the incurrence of Cal ISO wheeling expenses and fees allows PacifiCorp to  
18 reduce NPC below the level that would be incurred with existing transmission rights.

19  
20 **Q. IS THERE A LEGITIMATE BASIS FOR INCLUSION OF CAL ISO WHEELING**  
21 **EXPENSES AND FEES IN NPC WITHOUT INCLUSION OF THE ASSOCIATED**  
22 **BENEFITS?**

23 A. No. Since the Cal ISO system capability was not modeled, GRID wholesale balancing  
24 and optimizing transactions were accomplished with existing transmission rights and  
25 there is no Cal ISO wholesale transactions included in the filing, there is no justification  
26 for the inclusion of the Cal ISO wheeling expenses and fees. PacifiCorp's proposed

1 modeling is equivalent to charging ratepayers for the costs of a transaction but passing all  
2 of the benefits to shareholders.

3  
4 **Q. ARE THE SYSTEM BALANCING TRANSACTIONS CALCULATED BY GRID**  
5 **A SURROGATE FOR TRANSACTIONS WITH CAL ISO?**

6 A. No. The system balancing transactions calculated by GRID are done so with existing  
7 transmission rights and do not provide any incremental benefit that justifies the  
8 incurrence and inclusion of Cal ISO wheeling expenses and fees and, therefore, are not  
9 surrogates for Cal ISO transactions.

10  
11 **Q. WOULD AN ADJUSTMENT TO MATCH CAL ISO COSTS AND BENEFITS**  
12 **HAVE AN IMPACT ON HOW PACIFICORP OPERATES ITS SYSTEM ON AN**  
13 **ACTUAL BASIS?**

14 A. No. Adoption of an adjustment to match costs and benefits would not change  
15 PacifiCorp's incentive to execute the most economic transaction available. In fact, if  
16 they chose not to execute the most economic transactions available for a given hour, it  
17 would be imprudent.

18  
19 **Q. HAS A DECISION PREVIOUSLY BEEN RENDERED ON YOUR PROPOSED**  
20 **ADJUSTMENT IN ANY OTHER JURISDICTION?**

21 A. Yes. The Idaho Commission adopted the Cal ISO adjustment I proposed in Idaho Docket  
22 No. ID PAC-E-10-07, Order No. 32196.

1 **Q. WHAT IS YOUR RECOMMENDATION?**

2 A. The most appropriate adjustment would be to impute incremental benefit associated with  
3 Cal ISO transactions because the benefit is greater than the wheeling expenses and fees  
4 incurred. However, that information is apparently not only not available but not even  
5 known to the Company. In response to WIEC Data Request 13.1, in Wyoming Docket  
6 No. 20000-384-ER-10 PacifiCorp stated, “The Company has not calculated an estimate  
7 of incremental benefit from CAISO transactions.”

8 Therefore, I recommend that the Commission impute a value equal to the amount  
9 of Cal ISO wheeling expenses and fees included in PacifiCorp’s filing, to conservatively  
10 match costs and benefits. The impact of this adjustment is shown in Table 1.

11

12 **Q. DO YOU HAVE ANY ADDITIONAL CAL ISO RECOMMENDATIONS?**

13 A. Yes. Clearly, PacifiCorp would not go to the trouble to enter transactions where they  
14 would just break even. However, that is the end result under my adjustment because I  
15 impute revenues in an amount exactly equal to the costs in the filing. I have to handle the  
16 adjustment this way because PacifiCorp said they could not identify the average margin  
17 for transactions that incur Cal ISO wheeling expenses and fees. I recommend that the  
18 Commission require PacifiCorp to begin documenting the cost reductions achieved on all  
19 Cal ISO transactions that incur wheeling expenses and fees so the benefits being captured  
20 can be appropriately passed back to customers in future proceedings.

21

22 **Adjustment 2. RESERVE SHUTDOWNS**

23 **Q. PLEASE DEFINE RESERVE SHUTDOWN.**

Public Version of Direct Revenue Requirement Testimony of Mark T. Widmer  
Docket No. 10-035-124  
Page 14 of 46

1 A. Reserve shutdown is a state in which a thermal unit was available for service but not  
2 electrically connected to the grid for economic reasons.

3

4 **Q. PLEASE EXPLAIN HOW RESERVE SHUTDOWNS IMPACT THE FORCED**  
5 **OUTAGE RATES INCLUDED IN GRID?**

6 A. Reserve shutdowns are a deduction from the denominator of PacifiCorp's forced outage  
7 rate calculation. The formula is:

8 
$$\text{Forced outage rate} = \frac{\text{total hours lost}}{\text{total possible hours less planned}} \\ \text{outage hours and reserve shutdowns.}$$

9

10 Total hours lost is the sum of forced outages and derates, maintenance outages and  
11 derates and planned derates. Total possible hours equals total hours in the period  
12 multiplied by each generating units' maximum dependable capacity.

13

14  
15 **Q. DO YOU AGREE WITH THE COMPANY'S MODELING OF FORCED**  
16 **OUTAGE RATES IN GRID?**

17 A. No. PacifiCorp's calculation of forced outage rates is not consistent with how GRID uses  
18 the forced outage rates. The outage rates used as an input to GRID are calculated after  
19 reserve shutdowns, while GRID uses outage rates as if they are before reserve shutdowns.  
20 This disconnect causes GRID to produce too much lost generation.

21

22 **Q. HAVE YOU PREPARED AN EXAMPLE THAT ILLUSTRATES THE**  
23 **PROBLEM AND DEMONSTRATES YOUR SOLUTION TO CORRECT THE**  
24 **PROBLEM?**



1 A. Yes. I prepared Exhibit\_\_\_\_(MTW-2). Line 1 shows how PacifiCorp records a forced  
2 outage using standard industry practice for a 100 MW unit that runs 16 hours per day, has  
3 one 25 day forced outage and is on reserve shutdown 8 hours per day. Using  
4 PacifiCorp's method, the unit has a 9.9% forced outage rate and the unit runs 5,456 hours  
5 and generates 545,600 MWh ( $16*341*100$ ) for the year. Line 4 shows GRID modeling  
6 with PacifiCorp's forced outage rate. As shown, GRID simulates the forced outage by  
7 derating the unit capacity by 9.9%. That is, GRID does not put the unit on forced outage  
8 for 25 days. Using PacifiCorp's forced outage rate calculation, the unit runs 5,856 hours  
9 and generates 527,582 MWh ( $16*366*90.1$ ), which results in 18,018 MWh ( $545,600-$   
10  $527,582$ ) too few. Line 11 shows my proposed calculation to correct the overstatement of  
11 generation lost due to forced outages in GRID, which is to eliminate the deduction for  
12 reserve shutdowns from the denominator of PacifiCorp's forced outage rate calculation.  
13 Using my revised calculation, the forced outage rate is 6.83%. Line 11 shows GRID  
14 modeling with my revised 6.83% forced outage rate. For the year, under my approach  
15 GRID runs the unit runs 5,856 hours and generates 545,600 MWh – the same results as  
16 occur in the real world.

17

18 **Q. DID THE IDAHO COMMISSION ADOPT THIS ADJUSTMENT IN DOCKET**  
19 **NO. PAC-E-10-07?**

20 A. No. Based on testimony similar to what I have presented up to this point in this Utah  
21 testimony, without any explanation, the Idaho Commission rejected my proposed  
22 adjustment. However, I now have further support for this adjustment.

23

1 **Q. WHAT ADDITIONAL INFORMATION DO YOU HAVE TO PRESENT IN**  
2 **SUPPORT OF THIS PROPOSED ADJUSTMENT?**

3 A. I modeled two generation units in GRID using the same forced outage rate information as  
4 shown on Exhibit\_\_(MTW-2). The modeling results are provided as Exhibit\_\_(MTW-  
5 3). As shown, GRID produces the same results as my example shown on  
6 Exhibit\_\_(MTW-2). This verifies my conclusion that PacifiCorp's method produces too  
7 much lost generation due to forced outages.

8  
9 **Q. DOES YOUR ADJUSTMENT PRODUCE EXCESS THERMAL**  
10 **AVAILABILITY?**

11 A. No. GRID determines when coal and gas units are available to run based on test period  
12 economics, outages and available transmission. It should also be noted that the  
13 adjustment does not pertain to combustion turbines.

14  
15 **Q. WHAT IS YOUR RECOMMENDATION?**

16 A. Reserve shutdowns should be removed from the calculation of forced outage inputs to  
17 correct for the difference between how the forced outage rate inputs are calculated and  
18 how they are used in GRID. The impact of my adjustment is shown in Table 1.

19  
20 **Adjustment 3. GADSBY CT MUST RUN**

21 **Q. GADSBY UNITS 4, 5, AND 6 WERE MODELED AS MUST RUN UNITS IN GRID**  
22 **THAT ARE NOT SUBJECT TO THE LOGIC OF BEING COMMITTED TO RUN**

1           **ONLY WHEN ECONOMIC TO PROVIDE RESERVES FOR WIND**  
2           **INTEGRATION. DO YOU AGREE WITH PACIFICORP'S MODELING?**

3    A.    No. Based on my review of the actual dispatch of the Gadsby units<sup>2</sup> for the period  
4           January 2009 through June 2010, they are not operated as must run units. During actual  
5           operations the units are turned down practically every day and some days they don't run  
6           at all. So, there is no justification for operating the units as must run in GRID.

7  
8    **Q.    DOES THIS LEAD YOU TO ANY GENERAL CONCLUSIONS REGARDING**  
9           **PACIFICORP'S WIND INTEGRATION STUDY?**

10   A.    Yes. The fact that PacifiCorp believes it is necessary to run Gadsby units 4, 5, and 6 as  
11           must run in GRID to meet reserve requirements, when they are not operated that way in  
12           actual operations, suggests that the reserve requirements calculated by the Wind  
13           Integration Study are too high or that the GRID calculated reserve requirements are  
14           higher than they are on an actual basis.

15  
16   **Q.    WHAT IS YOUR RECOMMENDATION?**

17   A.    I recommend the must run feature for Gadsby units 4, 5, and 6 be turned off in GRID.  
18           The impact of this adjustment is shown in Table 1.

19  
20   **Adjustment 4.           MORGAN STANLEY CALL OPTION CONTRACTS**

21   **Q.    PLEASE DESCRIBE THE CONTRACTS.**

---

<sup>2</sup> The actual dispatch of the Gadsby is contained in Attachment R746-700-23.C.8.p Confidential  
Public Version of Direct Revenue Requirement Testimony of Mark T. Widmer  
Docket No. 10-035-124  
Page 18 of 46

1 A. PacifiCorp entered two Morgan Stanley [REDACTED] MW call option contracts during November  
2 2005, or over five years before the contracts could even be called upon. Each contract  
3 allows the take of [REDACTED] MW per super-peak hour for the period June 1, 2011 through  
4 August 31, 2011, if the market price of power hits the strike price. Contract p272153 has  
5 a strike price of [REDACTED] per MWh, a fixed premium charge of [REDACTED] and a breakeven  
6 price of over [REDACTED] per MWh, and contract p272154 has a strike price of [REDACTED] per  
7 MWh, a fixed premium of [REDACTED] and a breakeven price of over [REDACTED] per MWh.  
8 If the contract is not called upon, the total cost of each contract is the fixed premium.  
9

10 **Q. WHY WERE THESE TWO CONTRACTS EXECUTED?**

11 A. According to PacifiCorp, the contracts were executed to mitigate physical delivery risk  
12 within the Utah area. However, when asked to identify the actual occurrence of the risk  
13 that they were attempting to avoid over the previous 48 months prior to contract  
14 execution, PacifiCorp stated in response to UIEC 9.3 in Utah Docket No. 10-035-124,  
15 “The Company does not maintain records of this information.” With no support or  
16 evidence, PacifiCorp has failed to prove that it actually experienced an inability to serve  
17 customers in the Utah area. Thus, it has no need for these contracts, or at least they are  
18 not useful to Utah ratepayers.  
19

20 **Q. SHOULD THE COMMISSION ALLOW RECOVERY OF MORGAN STANLEY**  
21 **CALL OPTION CONTRACTS P272153 AND P272154?**

22 A. No. At the time these contracts were executed, it was already a long shot that either  
23 contract would provide a benefit or, if they did provide a benefit, it was likely it would

1 accrue to shareholders not retail customers. Put another way, the contracts were  
2 equivalent to your insurance agent attempting to sell you flood insurance even though  
3 you lived at the top of a city high rise located hundreds of miles from a body of water in a  
4 region with very limited rainfall. It would not make economic sense to buy flood  
5 insurance under those circumstances, and it doesn't make sense for customers to pay for  
6 the call option premiums given the circumstances at the time the contracts were executed.

7  
8 **Q. DID THE GRID MODEL CALL EITHER OF THESE CONTRACTS DURING**  
9 **THE TEST YEAR?**

10 A. No. The market prices were substantially below the strike price so the contracts were not  
11 called.

12  
13 **Q. WAS THERE A REASONABLE PROBABILITY AT THE TIME OF CONTRACT**  
14 **EXECUTION THAT CUSTOMERS WOULD BENEFIT FROM THESE**  
15 **CONTRACTS THROUGH RETAIL RATES?**

16 A. Not really. Market prices were so far below the breakeven price when the contracts were  
17 executed during November 2005 that it was unlikely customers would benefit. A review  
18 of 2005 market prices puts this into perspective. During the representative months of  
19 2005, the wholesale market price of PacifiCorp's STF wholesale purchases averaged  
20 approximately \$57 per MWh. In contrast, the breakeven wholesale market price would  
21 have to exceed ██████ per MWh on contract p272153 and ██████ per MWh on contract  
22 p272154 for customers to just breakeven based on the contracts pricing. Indeed, even if

1 you compare those breakeven prices to the system super-peak prices in this time period,  
2 the contracts are still significantly out of the money.

3  
4 **Q. AT THE TIME OF CONTRACT EXECUTION, WAS IT LIKELY THAT**  
5 **CUSTOMERS COULD BENEFIT FROM AN ENERGY BALANCING**  
6 **ACCOUNT (EBA)?**

7 A. No. PacifiCorp did not have an EBA in Utah at the time of execution and previously had  
8 successfully petitioned the Commission to eliminate the EBA. Therefore, if the contracts  
9 were going to provide any benefit, it was likely that the benefit would accrue to  
10 shareholders. This was a particularly attractive option to PacifiCorp, especially if they  
11 could get recovery of the premiums from retail customers.

12  
13 **Q. WHAT IS YOUR RECOMMENDATION?**

14 A. The contracts should be excluded from NPC because they were never likely to provide a  
15 benefit to customers due to the high breakeven price, and if anything, they were more  
16 likely to provide a benefit to shareholders. As such, it is unreasonable for customers to  
17 pay for the costs of those call options. The impact of my adjustment is shown on Table 1.

18  
19 **Adjustment 5. SHORT-TERM TRANSMISSION**

20 **Q. PLEASE EXPLAIN PACIFICORP'S SHORT-TERM TRANSMISSION**  
21 **MODELING.**

22 A. Non-firm and short-term firm transmission capability are combined and modeled as  
23 short-term transmission in GRID. Short-term transmission capability is based on a 48-

1 month average of historical transmission usage adjusted to exclude transmission links  
2 where the average capability is less than 1 aMW.

3  
4 **Q. DO YOU AGREE WITH THIS MODELING?**

5 A. I agree with the modeling with one exception. Based on my review of the data, I  
6 determined that the exclusion of transmission paths with less than 1 aMW of capability  
7 results in the cumulative exclusion of approximately 12 aMW of transmission capability.  
8 This transmission is used to balance and optimize the system and keep NPC as low as  
9 possible. Further, there is no viable reason for excluding this transmission given the fact  
10 that transmission over 1aMW is already included. Accordingly, I recommend that the  
11 exclusion of transmission paths with less than 1 aMW of capability be revised to the  
12 exclusion of transmission paths with less than 0.2 aMW. I used 0.2 aMW as the cutoff  
13 because it is reasonable in that it captures the bulk of the missing transmission benefits  
14 from when 1aMW is used. The impact of my adjustment is shown on Table 1.

15  
16 **Adjustment 6. BLACK HILLS SHAPING**

17 **Q. PLEASE EXPLAIN THE COMPANY'S MODELING FOR THE BLACKHILLS**  
18 **WHOLESALE SALES CONTRACT.**

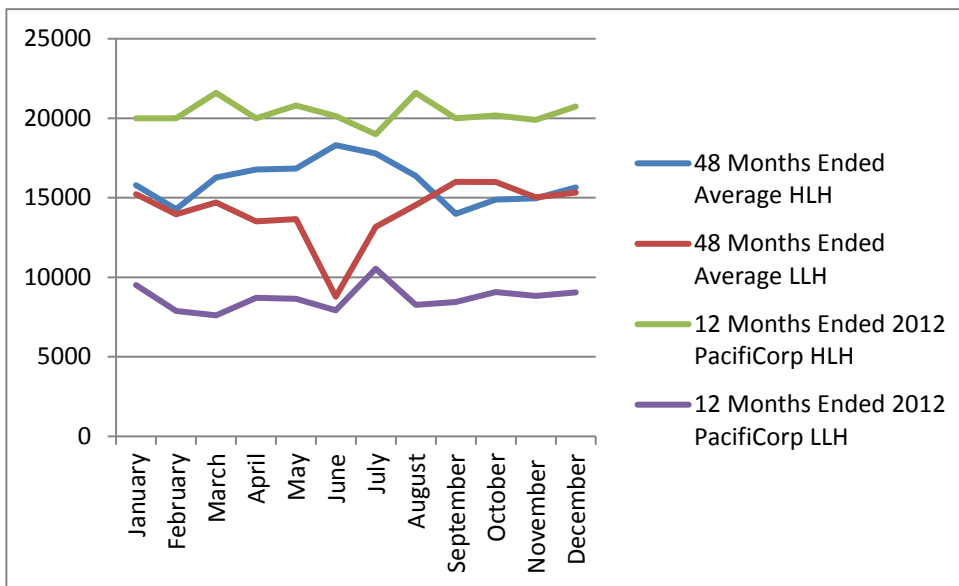
19 A. The contract is classified as a call option contract in GRID and the contract terms for  
20 energy such as hourly, daily weekly, monthly and annual take and delivery points are  
21 inputs to GRID. Based on this information and PacifiCorp's forward price curve GRID  
22 dispatches the contract during the highest cost hours based on the assumption that this is

1 what Black Hills, the purchasing utility would do. This conclusion is demonstrated by  
2 Graph 1 in my following testimony.

3  
4 **Q. IS THAT WHAT BLACK HILLS ACTUALLY DOES?**

5 A. No. In the case of Black Hills the actual delivery shape of the sale is much flatter than it  
6 is modeled in GRID. As shown below in Graph 1, Black Hills Dispatch (48 Months  
7 Ended Average HLH and LLH), the difference between actual on and off-peak deliveries,  
8 is smaller (flatter), meaning the volume of dispatch between HLH and LLH is much  
9 closer compared to the difference between the Company's modeled on and off-peak  
10 deliveries, which are the top and bottom lines.

11  
12 **Graph 1 – Black Hills Dispatch**



13



1 **Q. ARE YOU SURPRISED BY THE SHAPING DIFFERENCE?**

2 A. No. PacifiCorp simply does not know what Black Hills system requirements and  
3 assumptions are. In this case, the assumption that Black Hills would do what PacifiCorp  
4 thinks they would do is incorrect and results in a higher contract cost in GRID than  
5 occurs on an actual basis. To correct this problem the energy shape should be modeled  
6 using the average actual delivery shape over the 48-month period ended June 2010.

7  
8 **Q. DOES THE DIFFERENCE BETWEEN PACIFICORP'S PROPOSED DISPATCH**  
9 **AND BLACK HILLS ACTUAL DISPATCH INDICATE THAT BLACK HILLS**  
10 **ACTS IRRATIONALLY AND PACIFICORP ACTS RATIONALLY?**

11 A. No. The correct characterization would be that Black Hills acts rationally and PacifiCorp  
12 has no knowledge of what is optimal for Black Hills. If Black Hills had acted irrationally  
13 you might expect one year out of the last four to be different than PacifiCorp's dispatch  
14 assumptions, but that is not the case. The actual contract dispatch is quite a bit different  
15 each of the last four years.

16  
17 **Q DOES THE COMPANY USE ACTUAL INFORMATION IN ANY OTHER**  
18 **ASPECTS OF THE CONTRACT?**

19 A. Yes. The delivery points for the contract are modeled based on actual information. The  
20 purpose of using actual delivery points is to capture the expected cost of the sale because  
21 the energy can be delivered on either the east or west sides of PacifiCorp's system. This  
22 fact also suggests that the energy shape should use actual information.

23

1 **Q. DOES THE COMPANY USE ACTUAL INFORMATION TO MODEL OTHER**  
2 **CONTRACTS?**

3 A. Yes. Actual information is used to model other contracts. For example, energy for the  
4 GEM State contract is modeled for the months of May, June, July, and August based on  
5 historical information despite the fact that the contract states that deliveries are expected  
6 to occur during June, July, and August. PacifiCorp also uses actual data for various  
7 inputs of other contracts and GRID inputs such as GP Camas, Biomass and forced and  
8 planned outages<sup>3</sup>.

9  
10 **Q. WHAT IS YOUR RECOMMENDATION?**

11 A. The Black Hills wholesale sales contract should be modeled based on a four-year average  
12 of historical dispatch information. The impact of the adjustment is shown on Table 1.

13  
14 **Q. HAS A DECISION PREVIOUSLY BEEN RENDERED ON YOUR PROPOSED**  
15 **ADJUSTMENT IN ANY OTHER JURISDICTION?**

16 A. Yes. The Idaho Commission adopted the Black Hills adjustment in Idaho Docket No. ID  
17 PAC-E-10-07, Order No. 32196.

18

19 **Adjustment 7. NAMEPLATE CAPACITY CORRECTIONS**

20 **Q. DID PACIFICORP'S FILED NPC INCLUDE THE CORRECT CAPACITIES**  
21 **FOR HUNTER 3, CRAIG 1 AND HUNTER 2?**

---

<sup>3</sup> GRID workpapers

1 A. No. PacifiCorp's filing inadvertently included the incorrect capacities. The correct test  
2 year nameplate capacities are ■■■ MW for Hunter 3, ■■■ MW for Craig 1, and for  
3 Hunter 2 ■■■ MW starting April 30, 2011 and ■■■ MW, starting July 29, 2011. The  
4 impact of these corrections is shown on Table 1.

5  
6 **Adjustment 8. DC INTERTIE WHEELING**

7 **Q. PLEASE EXPLAIN THE DC INTERTIE AGREEMENT.**

8 A. On May 28, 1993 PacifiCorp and Bonneville Power Administration (BPA) executed a  
9 Memorandum of Agreement which provided a BPA Commitment to offer PacifiCorp 200  
10 MW firm south to north DC Intertie agreement. The DC Intertie and Network  
11 Transmission Agreement were executed on May 26, 1994. The agreement facilitated the  
12 Winter Power Sale Agreement (WPSA) between Southern California Edison and  
13 PacifiCorp which was signed December 14, 1993 to provide up to 422 MW of power to  
14 be delivered to PacifiCorp's West control Area. At the time the WPSA was executed  
15 PacifiCorp had rights to import 222 MW into the West Control Area. The Winter Power  
16 Sale Agreement was terminated by PacifiCorp effective on January 1, 2002. However,  
17 the term of the DC Intertie agreement is coincident with the AC Intertie Agreement and  
18 terminates when all of the facilities comprising the AC Intertie are permanently taken out  
19 of service. In other words, the DC intertie agreement will be in-place for a very long  
20 time and very costly to customers if included in rates.<sup>4</sup> The contract provides south to  
21 north delivery of energy from the Nevada Oregon Border (NOB) to the Big Eddy 500 kV  
22 substation to the Buckley 500 kV substation. The annual cost of the DC Intertie

---

<sup>4</sup> Confidential Rebuttal Testimony of Gregory N. Duvall, Wyoming Docket No. 20000-384-ER-10.

1 agreement for the test year is \$4.8 million. Using the current cost, the contract would  
2 cost customers approximately \$48 million every 10 years.

3  
4 **Q. IS THE DC INTERTIE AGREEMENT BEING UTILIZED IN THE TEST YEAR?**

5 A. No. It is not being utilized at all during the test year as NPC does not include any  
6 executed wholesale transactions at NOB. GRID balances and optimizes the system  
7 during the test year without utilizing the DC Intertie Agreement. Consequently,  
8 customers do not receive any test year benefit from the contract. Therefore, the  
9 agreement is not used and useful and should be excluded from NPC in this docket.

10  
11 **Q. HAS THE CONTRACT BEEN FULLY UTILIZED IN ACTUAL OPERATIONS?**

12 A. The DC intertie agreement has been used on a limited basis during real time operations.  
13 For example, during the four-year period ended December 2009 the average annual  
14 amount of energy transmitted over the DC Intertie for wholesale sales and purchases was  
15 90,717 MWh. Given the DC Intertie test year cost of \$4,766,400, the margin on the  
16 wholesale transactions that used the DC Intertie would need to be approximately \$52.5  
17 per MWh to break even. Consequently, the contract has only provided a limited benefit  
18 during real time operations. In essence, these are costs to maintain the opportunity to  
19 perhaps capture benefits that may occur in the future.

20  
21 **Q. WHAT IS YOUR RECOMMENDATION?**

22 A. The contract is clearly not used and useful for the test year, therefore, the DC Intertie  
23 wheeling expense should be excluded from NPC for this docket. If PacifiCorp can

1 demonstrate a benefit during Energy Balancing Account (EBA) proceedings, they should  
2 be allowed to recover the portion of the contract that is demonstrated to provide an  
3 economic benefit to customers. The impact of my proposed adjustment is shown in  
4 Table 1.

5  
6 **Q. IS YOUR RECOMMENDATION CONSISTENT WITH DECISIONS FROM**  
7 **OTHER PACIFICORP JURISDICTIONS?**

8 A. Yes. In Washington Docket UE 100740, Order 06, the Washington Commission denied  
9 recovery of this contract. In their order the commission stated:

10 PacifiCorp's evidence and arguments focus on whether the contract was prudent  
11 when it was executed. However, we do not need to answer that question in this  
12 Order. Even if we assume that the contract was prudent at its inception the  
13 Company has an ongoing obligation to manage the resource under contract to  
14 provide a benefit to the Company and its ratepayers. PacifiCorp has failed to  
15 demonstrate that it does so.

16  
17 Both Staff and ICNU testify that the contract is not expected to be used during the  
18 rate year to support the West Control Area, and thus no benefits are likely to  
19 materialize from the transmission capacity under the contract. The parties based  
20 their conclusions on the Company's failure to use the DC intertie capacity during  
21 the test year. As to its future use, they point to the absence of NOB contracts in  
22 the Company's GRID model as further support for their conclusion that the  
23 contract's capacity will not be used during the rate year.

24  
25 We find Staff's and ICNU's testimony and arguments to be compelling.  
26 Generally, for a resource to be included in rates, it must be found to be used and  
27 useful. This is not to say that every component of the Company's system has to  
28 be used to provide service at all times. However, the testimony here raises serious  
29 doubt as to the continued usefulness of the DC intertie capacity – doubt that  
30 PacifiCorp fails to address, much less resolve.

31  
32 There is a point when facilities or even contracts such as this have no  
33 demonstrated or foreseeable need. It is at this point that such capacity should be  
34 retired or written off the books. We are not convinced that now is the time for  
35 such action, and we accept the Company's rationale that the DC Intertie capacity  
36 could be useful in the future. The Company, however, must do more than state

1 that the facility might be used at some unspecified time to justify including this  
2 resource in rates.  
3

4 If the contract is not being used by the Company, it has an obligation to market its  
5 available transmission capacity in an effort to recover some of its costs. The  
6 Company proffers no testimony along this line. For these reasons, we conclude  
7 that PacifiCorp failed to demonstrate that the DC intertie contract would provide  
8 benefits to Washington ratepayers during the rate year. Therefore, we adopt the  
9 adjustments presented by Staff and ICNU and reduce NPC expense by  
10 \$1,057,130.  
11

12 **Adjustment 9. CENTRALIA WHEELING**

13 **Q. PLEASE EXPLAIN THE PURPOSE OF THE CENTRALIA PTP CONTRACT.**

14 A. [REDACTED]  
15 [REDACTED]  
16 [REDACTED]  
17 [REDACTED]  
18 [REDACTED]  
19 [REDACTED]

21 **Q. HAS THE CONTRACT BEEN UTILIZED DURING ACTUAL OPERATIONS?**

22 A. Yes. On April 23, 2007 PacifiCorp executed a contract with TransAlta to purchase  
23 approximately 4,000,000 MWh for delivery during 2007 through 2010. Other than this  
24 purchase, next to nothing has been purchased from TransAlta that would utilize the  
25 contract transmission path. The only energy that has been purchased from TransAlta  
26 during 2011 was 200 MW that was purchased January 2011. Transmission workpapers  
27 indicate that [REDACTED] of the 638 MW of transmission have been monetized by redirecting

1 the capacity from West Main to Mid C and 2 MW were redirected for wind station  
2 service.

3  
4 **Q. HAS PACIFICORP BEEN ABLE TO SELL ANY OF THE UNUSED CAPACITY?**

5 A. Yes. Apparently a portion of the capacity was sold for approximately \$3 million during  
6 the period December 2009 through November 2010. To the best of my knowledge none  
7 of the unused transmission for the test year has been resold.

8 **Q. IS THE BALANCE OF THE 638 MW THAT HAS NOT BEEN REDIRECTED  
9 USED AND USEFUL FOR CUSTOMERS?**

10 A. No. Since June 2009, PacifiCorp has been trying to sell the unused capacity. So it has  
11 not been used and useful to customers. In fact, other than the large purchases made by  
12 PacifiCorp in 2007, the portion of the contract that has been redirected, the average  
13 annual amount of energy transmitted over the contract path has been approximately 7,500  
14 MWh and there is none included in the test year. So, there is no doubt that all but a very  
15 limited portion of this \$11.5 million contract is not used and useful for customers.

16  
17 **Q. WHAT IS YOUR RECOMMENDATION?**

18 A. I recommend that all of the contract expense except the 30 MW that has been redirected  
19 for other use be excluded from NPC. The impact of my adjustment is shown on Table 1.

20  
21 **Adjustment 10. HYDRO OUTAGE RATES**

22 **Q. WHAT PERIOD OF ACTUAL DATA WAS USED TO NORMALIZE HYDRO  
23 PLANNED AND FORCED OUTAGE RATES?**

1 A. PacifiCorp used the 48-month period ended December 2009.

2

3 **Q. IS THIS THE SAME PERIOD THAT WAS USED TO NORMALIZE THERMAL**  
4 **OUTAGES?**

5 A. No. Thermal outages were normalized over the 48-month period ended June 2010. For  
6 consistency, hydro forced and planned outages should be modeled over the same period  
7 that thermal planned and forced outages are modeled to prevent picking and choosing  
8 different normalization periods so that shareholders benefit.

9

10 **Q. HAS PACIFICORP ALREADY CONCEDED THIS ADJUSTMENT?**

11 A. Yes. In response to OCS data request 8.37 PacifiCorp stated that they would make a  
12 revision in their rebuttal testimony to reflect normalization of hydro forced and planned  
13 outages based on actual information for the 48-month period ended June 2010.

14

15 **Q. WHAT IS YOUR RECOMMENDATION?**

16 A. I recommend that hydro outages be modeled over the same 48-month period ended June  
17 2010 as thermal outages, to reflect consistency in modeling assumptions. The impact of  
18 this adjustment is shown on Table 1.

19

20 **Adjustment 11. JIM BRIDGER and HUNTINGTON COAL PRICES**

21 **Q. DID FILED NPC INCLUDE THE CORRECT COAL PRICES FOR JIM**  
22 **BRIDGER AND HUNTINGTON?**



1 A. No. Filed NPC inadvertently included the incorrect fuel prices than what PacifiCorp  
2 intended to include in the filing. The correct fuel prices are [REDACTED] per MMBTU for Jim  
3 Bridger and [REDACTED] per MMBTU for Huntington. The impact of this correction is shown  
4 on Table 1.

5  
6 **Adjustment 12. JIM BRIDGER CITATIONS**

7 **Q. SHOULD ALL OF THE JIM BRIDGER FUEL EXPENSE INCLUDED IN THE**  
8 **FILING BE RECOVERABLE FROM CUSTOMERS?**

9 A. No. Fuel expenses include costs related to fines and citations levied by the Federal Mine  
10 Safety and Health Administration on Bridger Coal Company. Specifically, Jim Bridger  
11 fuel expense includes approximately \$0.3 million for fines and citations.

12  
13 **Q. HAS THE COMPANY INDICATED THAT THESE TYPES OF EXPENSES**  
14 **SHOULD NOT BE RECOVERABLE FROM CUSTOMERS?**

15 A. Yes. When asked to identify the amount of expense for fines and citations included in  
16 fuel costs for plants served by Energy West Coal Company in Wyoming Docket No.  
17 20000-384-ER-10 Data Request WIEC 6.19, PacifiCorp responded as follows, “None.  
18 Such expenses are recorded below the line; as such these costs are not included in fuel  
19 costs.”

20 From this response it is clear that costs related to fines and citations should be the  
21 responsibility of shareholders, since below the line refers to shareholder expense. I  
22 concur with PacifiCorp and recommend that the cost of fines and citations be removed  
23 from fuel expenses. The impact of removing this expense is shown on Table 1.

1  
2  
3  
4  
5  
6  
7  
8  
9  
10  
11  
12  
13  
14  
15  
16  
17  
18  
19  
20  
21  
22

**Adjustment 13.      NAUGHTON 3 OUTAGE**

**Q.      PLEASE EXPLAIN THE CAUSE OF THE NAUGHTON 3 OUTAGE, WHICH STARTED ON MAY 8, 2009 AND ENDED MAY 26, 2009.**

A.      [REDACTED]

**Q.      DID PACIFICORP RECEIVE COMPENSATION FOR SIEMANS FAILURE TO COMPLETE THE WORK ON SCHEDULE PER CONTRACT TERMS?**

A.      Yes. Pursuant to the terms of the contract PacifiCorp received a \$500,000 liquidated damage payment in June 2009 that was booked to purchase power expense.

**Q.      SHOULD THE OUTAGE BE INCLUDED IN NPC?**

A.      No. There are two reasons the outage should not be included in NPC. First, customers should not have to pay for replacement energy costs related to imprudent work performed by an under qualified contractor hired by the Company. Second, the Company already received liquidated damage compensation from Siemens, and to allow them to also recover the cost of the outage from customers would allow them to recover more than

---

<sup>5</sup> May 7, 2009 “Siemens Contract – Naughton U3 Overhaul (Contract 4700000602)  
Public Version of Direct Revenue Requirement Testimony of Mark T. Widmer  
Docket No. 10-035-124  
Page 33 of 46

1 100% of the costs incurred from the extended outage. The impact of my proposed  
2 adjustment is shown on Table 1.

3  
4 **Adjustment 14. BEAR RIVER NORMALIZATION**

5 **Q. WHAT IS UIEC'S GENERAL POSITION ON NORMALIZATION OF BEAR**  
6 **RIVER AND OTHER HYDRO GENERATION?**

7 A. UIEC believes that normalized generation should be based on the full complement of  
8 historical years so that ever-changing hydrological conditions are reflected in normalized  
9 generation. Further, if the operating capability of the project changes due to something  
10 like a turbine upgrade or a biological opinion, the historical water flows and or generation  
11 should be adjusted to reflect those capabilities over the entire normalization period.

12  
13 **Q. PLEASE EXPLAIN PACIFICORP'S POSITION.**

14 A. Based on Mr. Duvall's testimony from Wyoming Docket No. 20000-384-ER-10, it  
15 appears that PacifiCorp believes that the operating agreements which govern actual  
16 yearly Bear Lake generation also dictate how normalized generation should be calculated.  
17 In essence, he claims that due to a long-term drought, 2011 Bear River generation is not  
18 going to include flood control generation and, therefore, normalized generation should be  
19 calculated with only non-flood control generation years. The end result of this is that 11  
20 out of 30 years of the historical hydro record are excluded from the calculation of  
21 normalized generation. Put another way, Bear River normalized generation is based on  
22 the 19 worst water years of the 30 year historical period.

1 **Q. DO YOU AGREE THAT THE OPERATING AGREEMENTS PROHIBIT FLOOD**  
2 **CONTROL GENERATION BELOW A BEAR LAKE ELEVATION OF 5,921**  
3 **FEET AS STATED BY MR. DUVALL IN HIS WYOMING TESTIMONY?**

4 A. No. According to Mr. Duvall’s rebuttal testimony in Wyoming Docket No. 20000-384-  
5 ER-10, a Bear Lake elevation of 5,921 feet in the fall is the elevation at which flood  
6 control releases from storage must occur in order to approach the PacifiCorp Target  
7 Elevation of 5,918 feet on March 31 of the following spring. However, PacifiCorp’s  
8 response to WIEC 2.54 in Wyoming Docket No. 20000-384-ER-10, suggests flood  
9 control generation could occur when the Bear Lake elevation is different than the normal  
10 PacifiCorp Target Elevation (PTE) of 5,918 prescribed in the operating agreement, due to  
11 changing hydroelectric conditions. The response stated:

12 Incidental generation at the Bear River hydroelectric plants arising from  
13 flood control operation of Bear Lake is not limited to an elevation of  
14 above 5,918 feet because changing hydrologic conditions (as indicated in  
15 the Company’s response to WIEC Data Request 2.52) may require  
16 adjustment to the normal PacifiCorp Target Elevation of 5,918 to provide  
17 appropriate flood control. As stated in the agreement: “Except in  
18 emergencies, PacifiCorp will not release water from Bear Lake when the  
19 elevation is below the PTE unless consistent with flood control operation”  
20 (Paragraph 2(c)(ii)). Changes to the PacifiCorp target elevation are made  
21 based on changing conditions and can vary from month to month.

22  
23 Further to this point paragraph 2.c.ii on the “Operations Agreement For PacifiCorp’s  
24 Bear River System,” dated April 18, 2000, states:

25 Generally, if Bear Lake elevation is 5918 ft or higher at the end of the irrigation  
26 season, releases are scheduled to lower Bear Lake to elevation 5918 ft by March  
27 31<sup>st</sup> of the following year.  
28

29 So, while an elevation of 5,921 feet in the fall requires that flood control generation must  
30 be started, it could also occur at lower elevations due to changing hydrologic conditions.

1  
2  
3  
4  
5  
6  
7  
8  
9  
10  
11  
12  
13  
14  
15  
16  
17  
18  
19  
20  
21  
22  
23  
24  
25  
26  
27

**Q. DO HISTORICAL OPERATIONS SUPPORT THIS CONCLUSION?**

A. Yes. In flood control generation years 1981, 1987 and 2000, the respective highest elevation during these years was 5,918.96 feet, 5,919.65 feet and 5,919.78 feet. In addition, the highest fall elevation during August and September of these years was 5,917.82 feet, 5,918.74 feet, and 5917.30 feet. Further, as discussed in my following testimony these elevations are below the latest Bear Lake elevation forecast provided by PacifiCorp.

**Q. IN REBUTTAL TESTIMONY FILED IN WYOMING DOCKET NO. 20000-384-ER-10 ON MAY 6, 2011 MR. DUVALL STATED THAT “WIEC IS INCORRECT THAT CURRENT CONDITIONS DO NOT SUPPORT A CONCLUSION THAT THE LONG-TERM DROUGHT WILL CONTINUE.” DO YOU AGREE WITH HIS TESTIMONY?**

A. No. In fact, posted on PacifiCorp’s website was a news release dated May 5, 2011, that is titled “Bear River Managers Note Flooding Potential is High.” The following is an excerpt from the news release:

“Based on runoff forecasts, we believe there will be localized flooding of the Bear River into its historic flood plain,” said Connely Baldwin, Rocky Mountain Power Hydrologist. “There are many variable factors, that could influence the extent of flooding, including how rapidly snow melts and the possibility of a local heavy rain storm. However, people with property along or near the river should take all prudent measures to address the risks. These conditions could rival or perhaps exceed those of 1983-1984.

A copy of the entire news release is provided as Exhibit \_\_\_\_ (MTW-4).

1  
2  
3  
4  
5  
6  
7  
8  
9  
10  
11  
12  
13  
14  
15  
16  
17  
18  
19  
20  
21  
22  
23  
24  
25  
26  
27  
28  
29  
30

**Q. PLEASE PROVIDE SOME BACKGROUND ON THE 1983-1984 CONDITIONS REFERENCED IN THE NEWS RELEASE.**

A. Hydro generation for 1983 and 1984 were the 3<sup>rd</sup> and 1<sup>st</sup> highest Bear River generation years in the last 31 years. Generation was 678,149 MWh and 778,515 MWh for 1983 and 1984, respectively. Bear River generation included in PacifiCorp’s filing is less than 200,000 MWh.

**Q HAS PACIFICORP PROVIDED ADDITIONAL INFORMATION RELATED TO THE MAY 5, 2011 NEWS RELEASE?**

A. Yes. In response to WPSC data request 11.124, PacifiCorp stated:  
Based on the official May 1<sup>st</sup> water supply forecast (finalized and distributed May 5<sup>th</sup>), the most probable maximum lake elevation this spring is 5,920.1 feet with a 10% chance of exceeding 5,921.1 feet.

Also, in response to WIEC Data Request 38.41 PacifiCorp stated:  
...revised projections of for the direct runoff from the Bear Lake watershed which is not included in the Natural Resource Conservation Service forecast were finalized on May 16, 2011. These two components of inflow to Bear Lake results in an updated projected maximum elevation of 5,921.1 feet and a projected fall elevation of 5,919.6 feet. As shown on figure 1 of Mr. Duvall’s rebuttal testimony, if these projected elevations are realized, flood control releases may be needed to reach the PacifiCorp Target Elevation of 5,918 feet by March 31, 2012. However, the decision will depend on the actual Bear Lake elevations and the variability of weather conditions between now and the decision point this fall.

So, I think it is safe to say that the long-term drought is in fact over despite Mr. Duvall’s Wyoming rebuttal testimony.

1 **Q. DOES THE VARIABILITY IN BEAR LAKE ELEVATION SUPPORT**  
2 **PACIFICORP'S PROPOSED NORMALIZATION METHODOLOGY WHICH**  
3 **INCLUDES ONLY HISTORICAL DROUGHT YEARS?**

4 A. No. In Mr. Duvall's direct testimony in Wyoming Docket No. 20000-384-ER-10, filed  
5 on November 22, 2010 he stated that the lake elevation was expected to drop to about  
6 5,910 feet elevation during the test year. Now, less than six months later PacifiCorp's  
7 own hydrologist is saying that 2011 could rival or exceed the 1<sup>st</sup> and 3<sup>rd</sup> highest  
8 generation years in the last 31 years. This extreme variability supports the inclusion of  
9 all historical water years for normalization of Bear Lake generation, not a proposal based  
10 on a subset of the historical record comprised of only non-flood control years.

11  
12 **Q. DO EITHER THE OPERATING AGREEMENTS OR NORMALIZATION**  
13 **REQUIREMENTS DICTATE IF BEAR LAKE ELEVATION IS EXPECTED TO**  
14 **BE BELOW THE ELEVATION WHICH ALLOWS FLOOD CONTROL**  
15 **GENERATION, THAT ALL PREVIOUS FLOOD CONTROL YEARS SHOULD**  
16 **BE EXCLUDED FROM THE CALCULATION OF NORMALIZED**  
17 **GENERATION?**

18 A. Of course not. PacifiCorp's claim that contractual controls over discharge of water from  
19 Bear Lake precludes them from including flood control generation years from the  
20 calculation of normalized generation is nothing more than a red herring. There are no  
21 operating agreement requirements that dictate how normalized generation is calculated.  
22 PacifiCorp's proposed normalization isn't even standard industry practice; it is a clear cut  
23 case of cherry picking. When there are changes to operating agreements that affect

1 generation, standard industry practice is to recalculate the impact on each prior water year  
2 and include them in the normalized calculation, not to throw them out.

3  
4 **Q. CAN YOU PROVIDE AN EXAMPLE?**

5 A. Yes. When biological opinions for the Columbia River have been previously rendered,  
6 the generation for each water year has been recalculated based on the water that would  
7 have been available for generation had the biological opinion been in place during those  
8 previous years. To the best of my knowledge, not even a single water year has ever been  
9 thrown out.

10  
11 **Q. IS PACIFICORP'S PROPOSED BEAR RIVER NORMALIZATION**  
12 **CONSISTENT WITH THE NORMALIZATION OF ITS OTHER HYDRO**  
13 **PROJECTS?**

14 A. No. PacifiCorp does not exclude years of data from other hydro projects when extreme  
15 weather conditions persist; instead, they include all years of data. For example, the Dust  
16 Bowl years are not excluded from the normalization of Mid Columbia generation, even  
17 though such an extreme drought was not expected at the time of the filing. The purpose  
18 of hydro normalization is to smooth the volatility of generation over a long period of  
19 time, because no one year or even a limited period of years is representative of normal  
20 conditions. This is the reason that the shortest period of time PacifiCorp uses to  
21 normalize its other hydro projects is 30 years, and 70 years is used for the Mid Columbia  
22 projects. Yet, for Bear River, PacifiCorp deviates from the practice they use for other



1 projects. For Bear River they are basically assuming worst case results, which is not  
2 standard industry or PacifiCorp practice.

3  
4 **Q. IS PACIFICORP’S PROPOSED METHODOLOGY ALSO FLAWED FROM THE**  
5 **PERSPECTIVE THAT IT IS INCOMPLETE AND IT IS NOT SYMMETRICAL?**

6 A. Yes. In WIEC 2.62 from Wyoming Docket No. 20000-384-ER-10, PacifiCorp was asked  
7 to explain how they would normalize Bear River Generation starting post 2015, if years  
8 2011 through 2015 were flood control years. They were also asked if normalization  
9 would exclude any of the non flood control generation years or if they would still be  
10 included. PacifiCorp’s answer stated, “The Company has not determined how it would  
11 normalize Bear River generation if the hypothetical scenario were to occur.” In WIEC  
12 2.63 from Wyoming Docket No. 20000-384-ER-10, PacifiCorp was asked to explain  
13 under what circumstances non flood control generation (poor water years) would be  
14 excluded from the calculation of normalized generation. In response they stated, “The  
15 Company has not determined under what circumstances the Company would exclude non  
16 flood control generation from the calculation of normalized Bear River generation.”  
17 These responses demonstrate that this ad hoc methodology has not been thought through  
18 completely and is not symmetrical.

19  
20 **Q. WHAT IS YOUR RECOMMENDATION?**

21 A. PacifiCorp’s proposed Bear River normalization is a thinly veiled attempt to drive up  
22 NPC. The methodology is inconsistent with the methodology used for its other hydro  
23 projects, is incomplete, is not symmetrical, predicts a worst case result, is not standard

1 industry practice and is not suited to the extreme variability that is occurring this year.  
2 Therefore, PacifiCorp's normalization methodology should be rejected by the  
3 Commission. Bear River generation, including the Cutler and Oneida Projects and run of  
4 river generation, which is comprised of the Grace, Lifton and Soda projects, should be  
5 normalized using their complete historical record as adjusted for the effects of the 2003  
6 license for FERC Project #20. The impact of my adjustment is shown on Table 1.  
7

8 **Adjustment 15. NVE WHOLESALE SALE**

9 **Q. PLEASE DESCRIBE THE NVE SALE.**

10 A. Subsequent to the filing in this docket, PacifiCorp executed a new wholesale sale with  
11 NVE dated February 9, 2011. The contract calls for the delivery of 2,023,200 MWh  
12 beginning February 15, 2011 and ending on December 31, 2012. The energy is to be  
13 delivered all dates other than June 15-September 15 Monday through Sunday for all  
14 hours including NERC holidays. For the period June 15- September 15, the energy will  
15 be delivered 7x8 Monday through Sunday. The delivered product will consist of at least  
16 98% renewable energy and will include renewable energy attributes. There may be other  
17 such contracts that we have not yet been able to discover, but at this time, this is the only  
18 one we know about.

1  
2  
3  
4  
5  
6  
7  
8  
9  
10  
11  
12  
13  
14  
15  
16  
17  
18  
19  
20  
21  
22

**Q. WHAT IS YOUR RECOMMENDATION?**

A. This known and measurable contract should be included in test year NPC. I have included energy only, without RECs, because the value of the RECs is unknown and not modeled in GRID. The impact of this adjustment is shown on Table 1.

**Adjustment 16. BPA VANTAGE NETWORK WHEELING**

**Q. WAS THE BPA NETWORK LOAD FORECAST THAT WAS USED TO CALCULATE BPA WHEELING EXPENSES UPDATED?**

A. Yes. In response to UIEC 4.33 PacifiCorp indicated that the BPA network load forecast used in their filing was superseded by a new forecast. This adjustment includes the new BPA network load forecast, which decreases the BPA Vantage Network wheeling expense. The impact of this adjustment is shown on Table 1.

**Adjustment 17. GRID MAJOR MARKET CAPS**

**Q. PLEASE EXPLAIN PACIFICORP'S NEW MARKET CAP METHODOLOGY AND CONTRAST IT WITH THE PREVIOUS METHODOLOGY.**

A. The new market cap methodology adopts wholesale market caps for HLH and LLH instead of using market caps for only graveyard hours. The market caps are equal to the 48-month average volume of short-term firm (STF) wholesale sales for each market less the volume of executed STF wholesale sales for each market included in GRID. This method is very similar to the method I proposed for the illiquid Mona market in recently

1 completed Idaho Docket No. PAC-E-10-07, but does not make sense for other more  
2 liquid markets as explained below.

3  
4 **Q. MR. DUVALL INTRODUCED THE TERM MARKET DEPTH. DOES THIS**  
5 **INDICATE A NEW STUDY HAS BEEN PERFORMED THAT ACTUALLY**  
6 **CALCULATES HOW MUCH THE ENTIRE WHOLESale MARKET WOULD**  
7 **BUY AT VARIOUS PRICE LEVELS?**

8 A. No. Whether the term market depth or market caps are used they both refer to an average  
9 volume of STF energy PacifiCorp sold in the wholesale market over a defined historical  
10 period. In the end, nothing has really changed, and PacifiCorp sells the economic  
11 generation they have available in the wholesale market.

12  
13 **Q. DOES THE ACTUAL AMOUNT OF ECONOMIC GENERATION PACIFICORP**  
14 **SELLS IN THE WHOLESale MARKET CHANGE FROM YEAR TO YEAR?**

15 A. Of course. The amount of economic generation available for sale depends on a number  
16 of factors including, but not limited to, retail load, market prices for electricity, fuel costs,  
17 hydro conditions, resource additions and deletions, forced outages and planned outages.  
18 For example, in 2006, 2007, 2008, and 2009 STF wholesale sales volumes were 31.6,  
19 41.2, 25.2, and 17.6 million MWh, respectively. The point here is that the market is  
20 bigger than just the amount of energy PacifiCorp sold into the market and if PacifiCorp  
21 has more energy to sell during the normalized period, they will likely sell more energy  
22 than they did during the historical period.

1 **Q. IS THE MARKET CAP ADJUSTMENT STILL RELEVANT FOR THIS TEST**  
2 **YEAR?**

3 A. No. As shown below in Table 2 UIEC's NPC, which does not include market caps,  
4 includes less coal generation than is included in PacifiCorp's results. Given that  
5 PacifiCorp believes their results produce a reasonable level of coal generation, the market  
6 caps are no longer justified or necessary to ensure that GRID does not produce too much  
7 coal generation.

	<b>Table 2</b>			
	<b>Coal Generation</b>			
	<b>MWh /1</b>			
	<b>HLH</b>	<b>LLH</b>	<b>Total</b>	
<b>PacifiCorp Filed</b>	24,991,500	19,408,595	44,400,094	
<b>UIEC Filed</b>	24,987,286	19,349,478	44,336,764	
<b>Difference</b>	4,213	59,117	63,330	
/1 June 2012 test year				

8  
9

10 **Q. DO YOU AGREE WITH THE PROPOSED MARKET CAPS?**

11 A. No. Based on the information shown on Table 2, which demonstrates that even without  
12 market caps, UIEC's proposal produces less coal generation than even PacifiCorp  
13 believes is reasonable, market caps are no longer relevant or justified. Accordingly, the  
14 Commission should reject the proposed market caps. The impact of my proposed  
15 adjustment is shown on Table 1.

16

17 **Adjustment 18**      **ROSEBURG FOREST PRODUCTS**

1 **Q. PLEASE EXPLAIN THE ROSEBURG ADJUSTMENT.**

2 A. This adjustment corrects the volume of this purchase power contract. PacifiCorp  
3 proposed this adjustment in its Wyoming rebuttal testimony of Mr. Duvall in Wyoming  
4 Docket No. 20000-384-ER-10. The impact of the adjustment is shown on Table 1.

5  
6 **Adjustment 19 THREEMILE CANYON**

7 **Q. PLEASE EXPLAIN THE THREEMILE CANYON ADJUSTMENT.**

8 A. This adjustment includes the contract extension of this contract through September 30,  
9 2011. PacifiCorp proposed this adjustment in its Wyoming rebuttal testimony of Mr.  
10 Duvall in Wyoming Docket No 20000-384-ER-10. The impact of this adjustment is  
11 shown in Table 1.

12  
13 **Adjustment 20 MONSANTO INTERRUPTIBLE PRODUCTS**

14 **Q. PLEASE EXPLAIN THE MONSANTO ADJUSTMENT.**

15 A. This adjustment includes the terms of the new contract as decided in Idaho Docket No.  
16 PAC-E-10-07. PacifiCorp proposed this adjustment in its Wyoming testimony of Mr.  
17 Duvall in Wyoming Docket No. 20000-384-ER-10. The impact of this adjustment is  
18 shown on Table 1.

19

1 **Adjustment 21.      NATURAL GAS SWAPS**

2 **Q.      PLEASE PROVIDE THE PERFORMANCE OF PACIFICORP'S NATURAL GAS**  
3 **FINANCIAL HEDGING WITH SWAPS.**

4 A.      Based on the latest information provided through discovery the cumulative loss on  
5 natural gas swaps is approximately a staggering █████ million for the period January 1,  
6 2006 through June 2012, based on actual losses through December 2010 and PacifiCorp's  
7 mark-to-market for the remainder of the period. The monthly detail is provided as  
8 Confidential Exhibit \_\_\_(MTW-5).

9  
10 **Q.      PLEASE EXPLAIN HOW THE NATURAL GAS SWAPS ADJUSTMENT WAS**  
11 **CALCULATED?**

12 A.      Based on Mr. J Robert Malko's recommendation and the percent of price risk that was  
13 hedged as of December 31, 2010<sup>6</sup>, to assume that at least 33% was exposed to market, I  
14 adjusted the losses on swaps included in GRID so that no more than 67% of the price risk  
15 for physical requirements would be hedged for each month during the test year. The  
16 impact of this adjustment is \$45.7 million for the total Company and \$19.6 million for  
17 Utah. It is shown on Table 1.

18  
19 **Q.      DOES THIS CONCLUDE YOUR DIRECT TESTIMONY?**

20 A.      Yes.

21

---

<sup>6</sup> OCS 19.11

**CERTIFICATE OF SERVICE**  
(Docket No. Docket No. 10-035-124)

I hereby certify that on this 6th day of July 2011, I caused to be e-mailed, a true and correct copy of the foregoing **ERRATA TO PUBLIC DIRECT TESTIMONY OF MARK T. WIDMER ON BEHALF OF UTAH INDUSTRIAL ENERGY CONSUMERS (UIEC)** to the parties below. For those who have signed the protective order and would like a copy of the confidential version, please email a copy of your execution of the agreement and we will in turn send you a copy of the confidential testimony.

Patricia Schmid  
Dahnelle Burton-Lee  
ASSISTANT ATTORNEYS GENERAL  
500 Heber Wells Building  
160 East 300 South  
Salt Lake City, UT 84111  
pschmid@utah.gov  
dburton-lee@utah.gov

Michele Beck  
Executive Director  
COMMITTEE OF CONSUMER SERVICES  
Heber Wells Building  
160 East 300 South, 2<sup>nd</sup> Floor  
SLC, UT 84111  
mbeck@utah.gov

David L. Taylor  
Yvonne R. Hogle  
Mark C. Moench  
ROCKY MOUNTAIN POWER  
201 South Main Street, Suite 2300  
SLC, UT 84111  
Dave.Taylor@pacificorp.com  
yvonne.hogle@pacificorp.com  
mark.moench@pacificorp.com  
datarequest@pacificorp.com

Chris Parker  
William Powell  
Dennis Miller  
DIVISION OF PUBLIC UTILITIES  
500 Heber Wells Building  
160 East 300 South, 4<sup>th</sup> Floor  
Salt Lake City, UT 84111  
chrisparker@utah.gov  
wpowell@utah.gov  
dennismiller@utah.gov

Paul Proctor  
ASSISTANT ATTORNEYS GENERAL  
500 Heber Wells Building  
160 East 300 South  
Salt Lake City, UT 84111  
pproctor@utah.gov

Cheryl Murray  
Dan Gimble  
Danny Martinez  
UTAH COMMITTEE OF CONSUMER  
SERVICES  
160 East 300 South, 2<sup>nd</sup> Floor  
Salt Lake City, UT 84111  
cmurray@utah.gov  
dgimble@utah.gov  
dannymartinez@utah.gov

Gary Dodge  
Hatch James & Dodge  
10 West Broadway, Suite 400  
Salt Lake City, UT 84101  
gdodge@hjdllaw.com

Kevin Higgins  
Neal Townsend  
ENERGY STRATEGIES  
39 Market Street, Suite 200  
Salt Lake City, UT 84101  
khiggins@energystrat.com  
**ntownsend@energystrat.com**

Peter J. Mattheis  
Eric J. Lacey  
Brickfield, Burchette, Ritts & Stone,  
P.C.  
1025 Thomas Jefferson St., N.W.  
800 West Tower  
Washington, D.C. 20007  
pjm@bbrslaw.com  
elacey@bbrslaw.com

Stephen F. Mecham  
Callister Nebeker & McCullough  
10 East South Temple Suite 900  
Salt Lake City, Utah 84133  
sfmecham@cnmlaw.com



Holly Rachel Smith, Esq.  
Holly Rachel Smith, PLLC  
Hitt Business Center  
3803 Rectortown Road  
Marshall, VA 20115  
holly@raysmithlaw.com

Kurt J. Boehm, Esq.  
BOEHM, KURTZ & LOWRY  
36 E. Seventh St., Ste 1510  
Cincinnati, Ohio 45202  
kboehme@BKLLawfirm.com

Sharon M. Bertelsen  
Ballard Spahr LLP  
201 So. Main Street, Ste 800  
Salt Lake City, Utah 84111  
bertelsens@ballardspahr.com

Charles (Rob) Dubuc  
Western Resource Advocates  
& Local Counsel for Sierra Club  
150 South 600 East, Suite 2A  
Salt Lake City, UT 84102  
rdubuc@westernresources.org

Steven S. Michel  
Western Resource Advocate  
409 E. Palace Ave. Unit 2  
Santa Fe, NM 87501  
smichel@westernresources.org

Nancy Kelly  
Western Resource Advocates  
9463 N. Swallow Rd.  
Pocatello, ID 83201  
nkelly@westernresources.org

Randy N. Parker, CEO  
Utah Farm Bureau Federation  
9865 South State Street  
Sandy, Utah 84070  
rparker@fbfs.com

Leland Hogan, President  
Utah Farm Bureau Federation  
9865 South State Street  
Sandy, Utah 84070  
leland.hogan@fbfs.com

Sophie Hayes  
Sarah Wright  
Utah Clean Energy  
1014 2<sup>nd</sup> Avenue  
Salt Lake City, UT 84111  
sophie@utahcleanenergy.org  
sarah@utahcleanenergy.org

Ryan L. Kelly, #9455  
Kelly & Bramwell, P.C.  
11576 South State St. Bldg. 1002  
Draper, UT 84020  
ryan@kellybramwell.com

Captain Shayla L. McNeill  
Ms. Karen S. White  
Staff Attorneys  
AFLOA/JACL-ULFSC  
139 Barnes Ave, Suite 1  
Tyndall AFB, FL 32403  
Shayla.mcneill@tyndall.af.mil  
Karen.white@tyndall.af.mil

Mike Legge  
US Magnesium LLC  
238 North 2200 West  
Salt Lake City, Utah 84106  
mlegge@usmagnesium.com

Roger Swenson  
US Magnesium LLC  
238 North 2200 West  
Salt Lake City, UT 84114  
roger.swenson@prodigy.net

Bruce Plenk  
Law Office of Bruce Plenk  
2958 N St Augustine Pl  
Tucson, AZ 85712  
bplenk@igc.org

ARTHUR F. SANDACK, Esq  
8 East Broadway, Ste 411  
Salt Lake City, Utah 84111  
[asandack@msn.com](mailto:asandack@msn.com)

Steve W. Chriss  
Wal-Mart Stores, Inc.  
2001 SE 10<sup>th</sup> Street  
Bentonville, AR 72716-0550  
stephen.chriss@wal-mart.com

Stephen J. Baron  
J. Kennedy & Associates  
570 Colonial Park Drive, Ste 305  
Roswell, GA 30075  
sbaron@jkenn.com

Gerald H. Kinghorn  
Jeremy R. Cook  
Parsons Kinghorn Harris, P.C.  
111 East Broadway, 11<sup>th</sup> Floor  
Salt Lake City, UT 84111  
ghk@pkhlawyers.com  
jrc@pkhlawyers.com

Gloria D. Smith  
Senior Attorney  
Sierra Club  
85 Second Street, 2<sup>nd</sup> Fl.  
San Francisco, CA  
gloria.smith@sierraclub.org

Janee Briesemeister  
AARP  
98 San Jacinto Blvd. Ste. 750  
Austin, TX 78701  
jbrisesemeister@aarp.org

Sonya L. Martinez, CSW  
Policy Advocate  
Betsy Wolf  
Salt Lake Community Action  
Program  
764 South 200 West  
Salt Lake City, UT 84101  
Smartinez@slcap.org  
bwolf@slcap.org

/s/ Colette V. Dubois

---