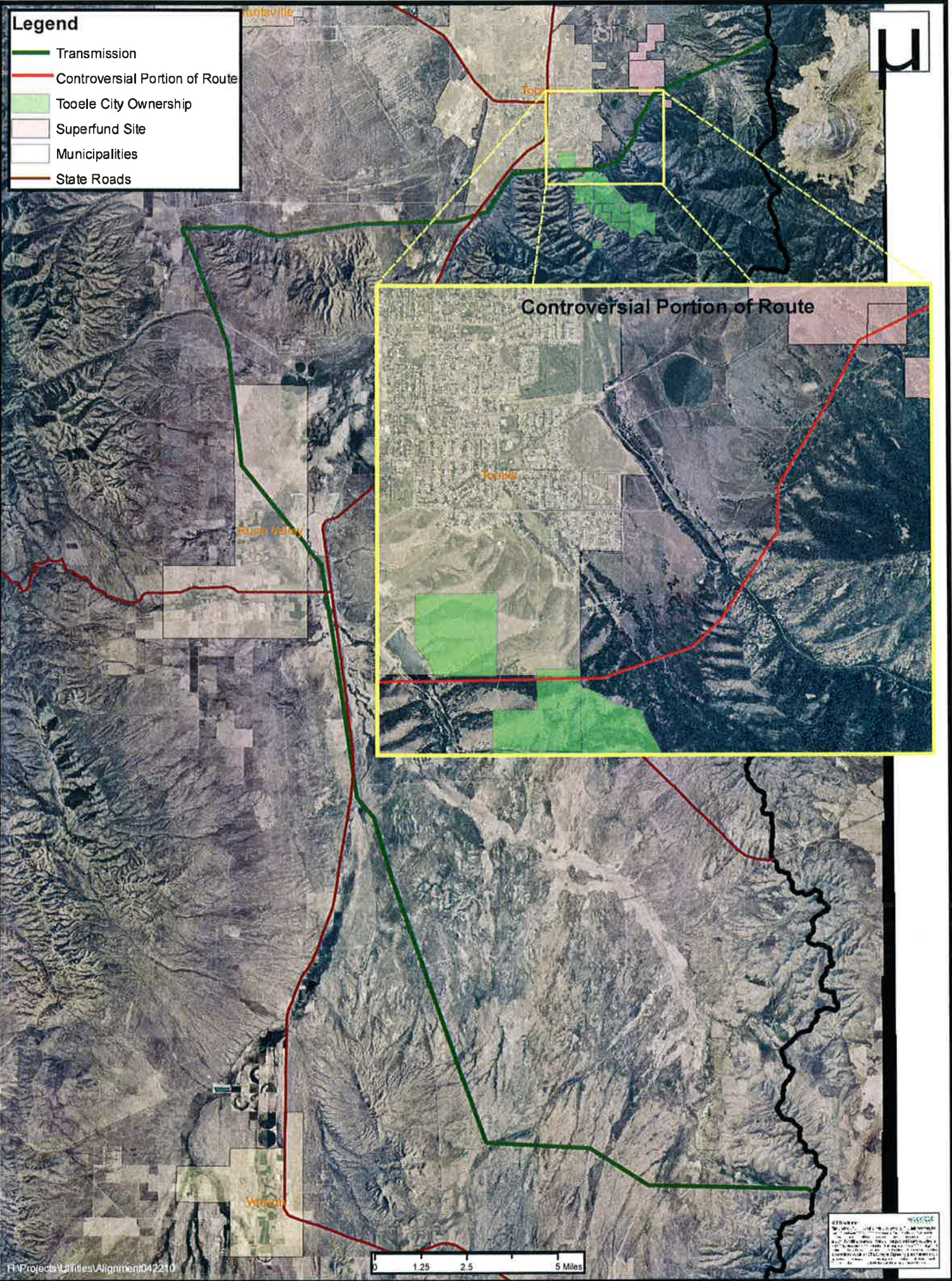


Legend

- Transmission
- Controversial Portion of Route
- Tooele City Ownership
- Superfund Site
- Municipalities
- State Roads



Controversial Portion of Route

Tropic

Rush Valley

Veradale



PROJECT: 4655005
DATE: 11/15/2011
SCALE: 1" = 1 MILE
PROJECT: 4655005
DATE: 11/15/2011
SCALE: 1" = 1 MILE