

P:\GIS\Projects\PacificCorp\modular\mxd\CUPa\Tooele_CUPs_General Plan

Aerial Imagery Source Information

Imagery Date: 2009
Source: DigitalGlobe
Resolution: 0.5 Meter
Projection: UTM
Zone: 12
Datum: NAD 83
© DigitalGlobe, Inc. All Rights Reserved

General Reference Features Source Information

Transportation Networks - AGRC 2007
Municipal Boundaries - AGRC, 2004
Parcel Databases - Salt Lake County 2007
PLSS - AGRC, 2005

Legend

- Proposed Access Road
- Proposed Right of way
- Proposed Transmission Structures
- Proposed Conductor Pull Site
- Substation
- New Substation Site
- Unimproved Road
- Light Duty Road
- Parcels
- 345kV Transmission Line (Existing)
- 138kV Transmission Line (Existing)
- 46kV Subtransmission Line (Existing)
- Municipal Boundary
- 2 Mile Wide Corridor
- Secondary Highway
- Railroad
- Townships
- Sections

General Plan Designations

- Agriculture
- Federal
- Grazing
- Town Center
- Multi-Use
- Regional Retail
- Slopes 30%
- Industrial
- Industrial Technical
- Interstate Commercial
- Visual Open Space
- Lower-Density Residential
- Medium-Density Residential

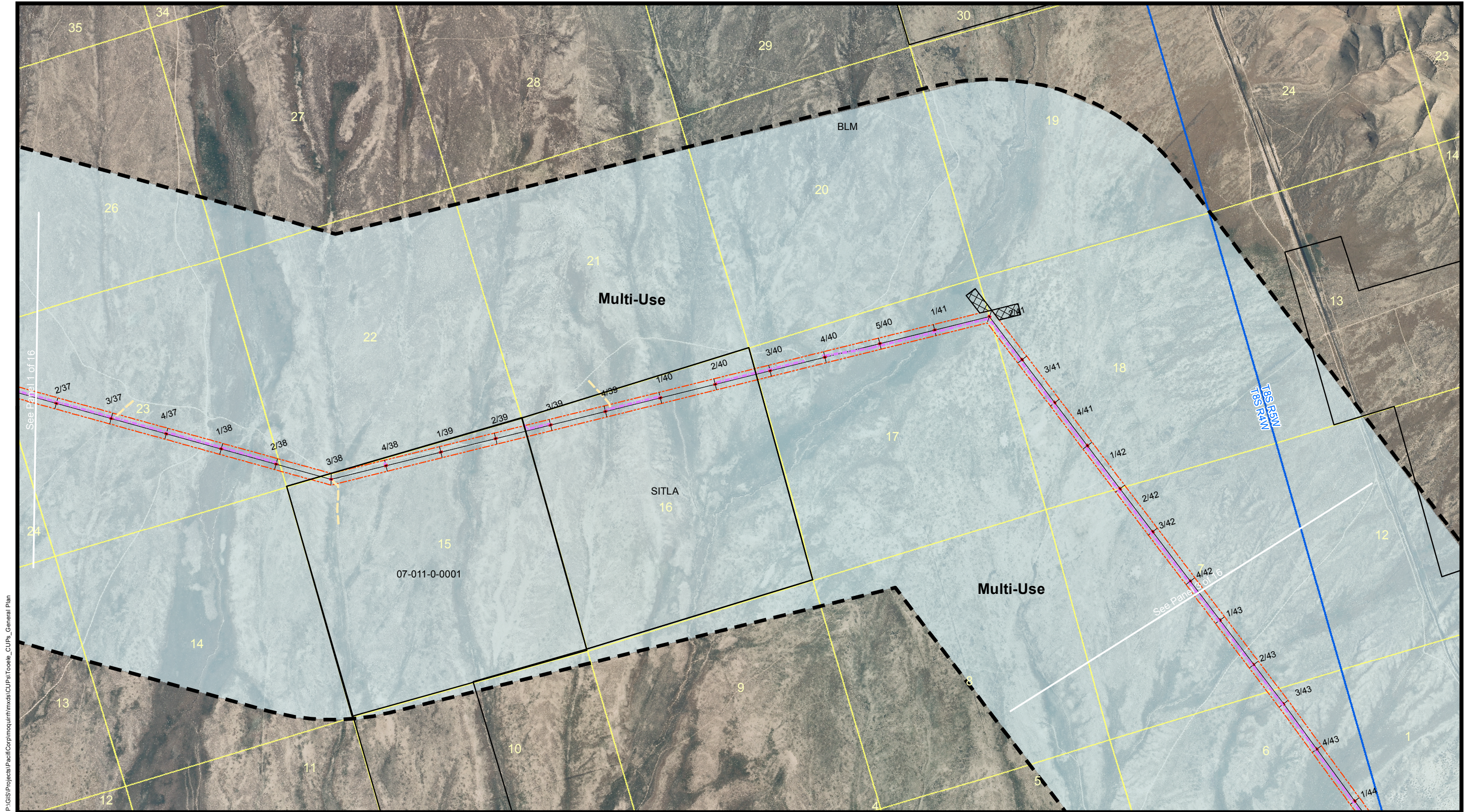
MONA TO OQUIRRH TRANSMISSION CORRIDOR PROJECT Proposed 500kV and 345kV Transmission Lines

Tooele County
Attachment 16 - General Plan Map
Panel 1 of 16

December 2009



0 500 1,000 2,000 3,000 Feet
1 in = 2,000 ft



Aerial Imagery Source Information

Imagery Date: 2009
Source: DigitalGlobe
Resolution: 0.5 Meter
Projection: UTM
Zone: 12
Datum: NAD 83
© DigitalGlobe, Inc. All Rights Reserved

General Reference Features Source Information

Transportation Networks - AGRC 2007
Municipal Boundaries - AGRC, 2004
Parcel Databases - Salt Lake County 2007
PLSS - AGRC, 2005

Legend

- Proposed Access Road
- Proposed Right-of-way
- Proposed Transmission Structures
- Proposed Conductor Pull Site
- Substation
- New Substation Site
- Unimproved Road
- Light Duty Road
- Parcels
- 345kV Transmission Line (Existing)
- 138kV Transmission Line (Existing)
- 46kV Subtransmission Line (Existing)
- Municipal Boundary
- 2 Mile Wide Corridor
- Secondary Highway
- Railroad
- Townships
- Sections

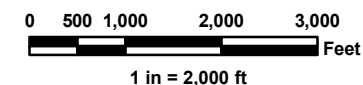
General Plan Designations

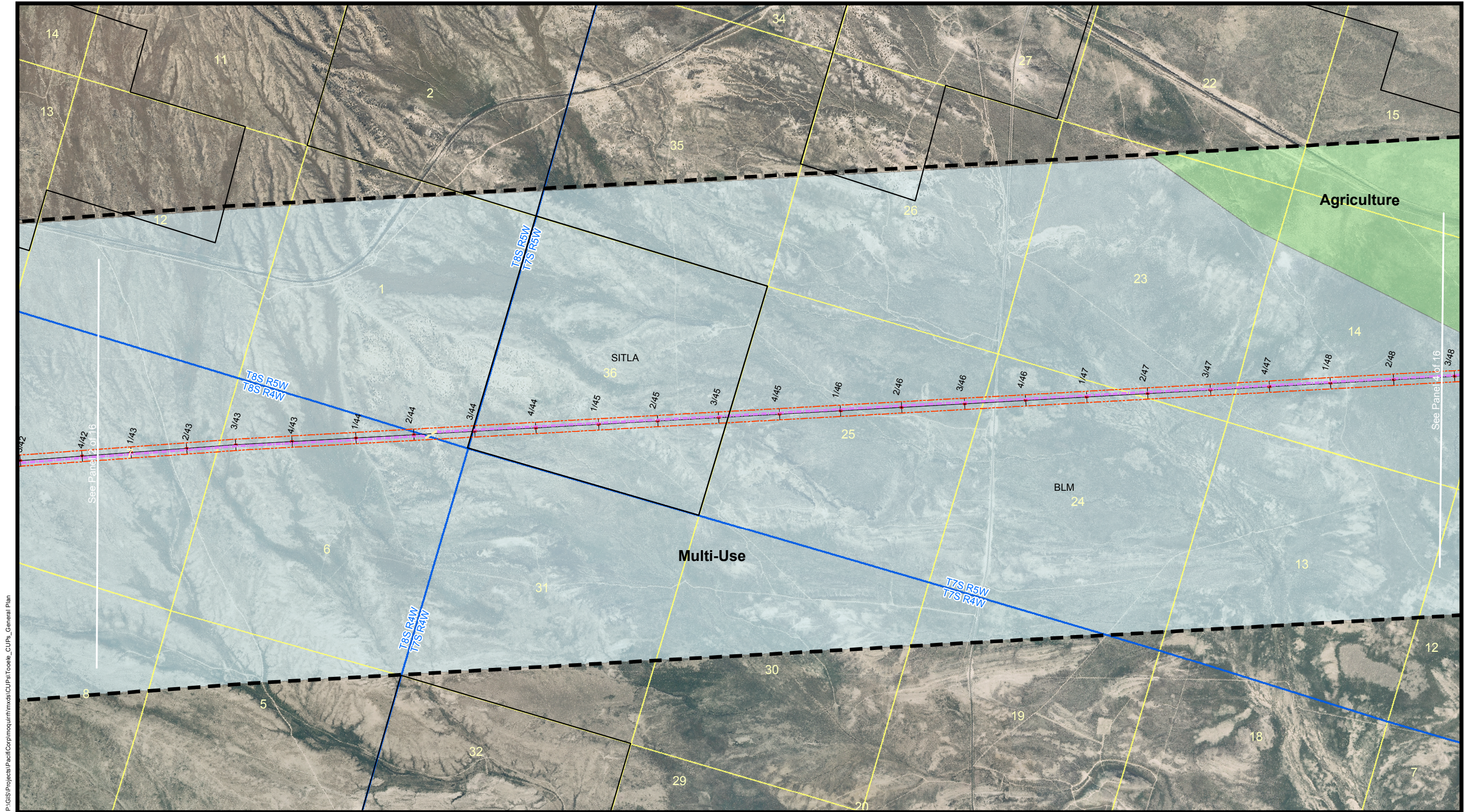
- Agriculture
- Federal
- Grazing
- Town Center
- Multi-Use
- Regional Retail
- Slopes 30%
- Industrial
- Industrial Technical
- Interstate Commercial
- Visual Open Space
- Lower-Density Residential
- Medium-Density Residential

MONA TO OQUIRRH TRANSMISSION CORRIDOR PROJECT Proposed 500kV and 345kV Transmission Lines

Tooele County
Attachment 16 - General Plan Map
Panel 2 of 16

December 2009





P:\GIS\Projects\PacificCorp\modular\hmxds\CUPa\Tooele_CUPs_General Plan

Aerial Imagery Source Information

Imagery Date: 2009
Source: DigitalGlobe
Resolution: 0.5 Meter
Projection: UTM
Zone: 12
Datum: NAD 83
© DigitalGlobe, Inc. All Rights Reserved

General Reference Features Source Information

Transportation Networks - AGRC 2007
Municipal Boundaries - AGRC, 2004
Parcel Databases - Salt Lake County 2007
PLSS - AGRC, 2005

Legend

- | | |
|----------------------------------|--------------------------------------|
| Proposed Access Road | 345kV Transmission Line (Existing) |
| Proposed Right-of way | 138kV Transmission Line (Existing) |
| Proposed Transmission Structures | 46kV Subtransmission Line (Existing) |
| Proposed Conductor Pull Site | Municipal Boundary |
| Substation | 2 Mile Wide Corridor |
| New Substation Site | Secondary Highway |
| Unimproved Road | Railroad |
| Light Duty Road | Townships |
| Parcels | Sections |

General Plan Designations

- | | |
|-----------------|----------------------------|
| Agriculture | Industrial |
| Federal | Industrial Technical |
| Grazing | Interstate Commercial |
| Town Center | Visual Open Space |
| Multi-Use | Lower-Density Residential |
| Regional Retail | Medium-Density Residential |
| Slopes 30% | |

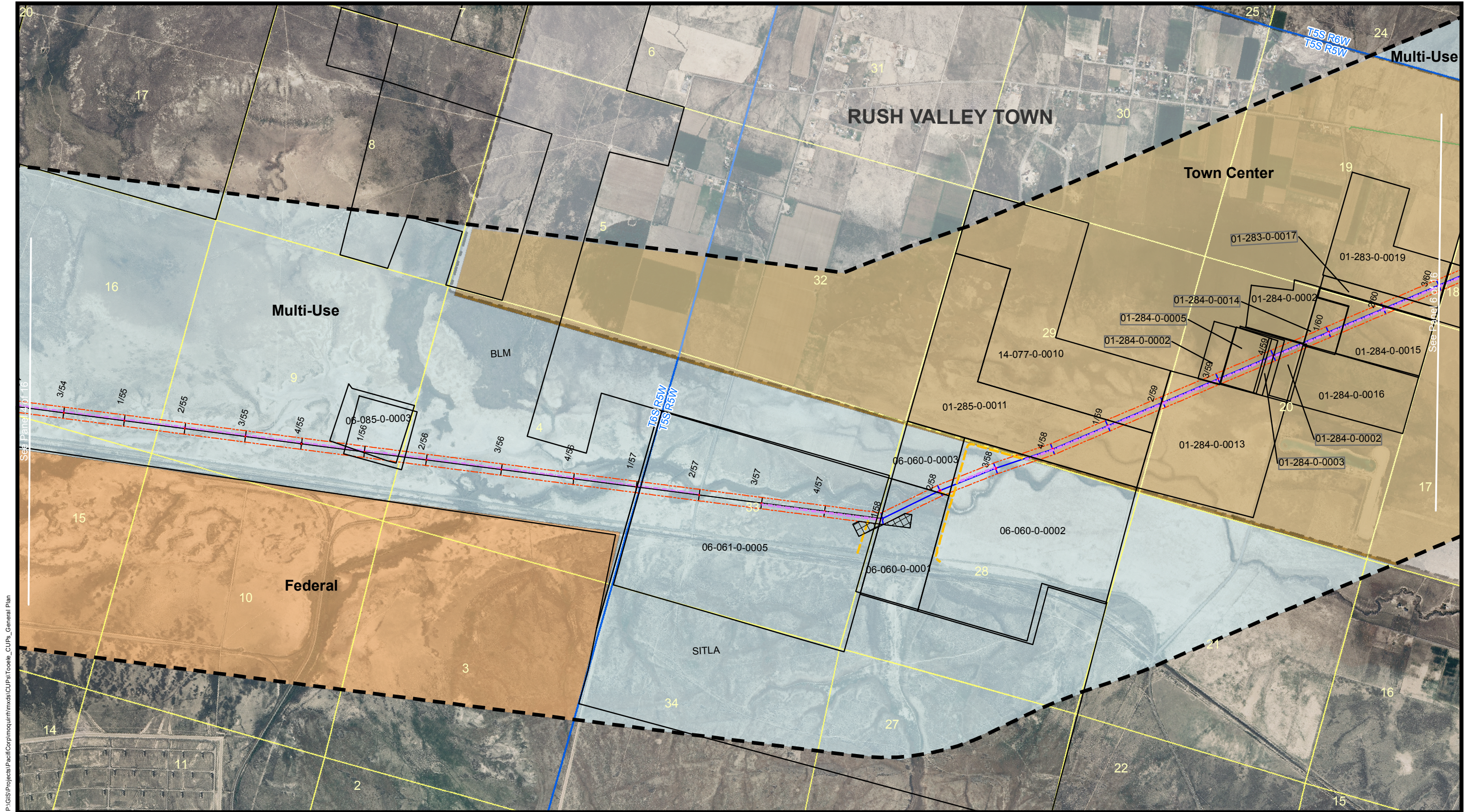
MONA TO OQUIRRH TRANSMISSION CORRIDOR PROJECT Proposed 500kV and 345kV Transmission Lines

Tooele County
Attachment 16 - General Plan Map
Panel 3 of 16

December 2009



0 500 1,000 2,000 3,000 Feet
1 in = 2,000 ft



Aerial Imagery Source Information

Imagery Date: 2009
Source: DigitalGlobe
Resolution: 0.5 Meter
Projection: UTM
Zone: 12
Datum: NAD 83
© DigitalGlobe, Inc. All Rights Reserved

General Reference Features Source Information

Transportation Networks - AGRC 2007
Municipal Boundaries - AGRC, 2004
Parcel Databases - Salt Lake County 2007
PLSS - AGRC, 2005

Legend

- Proposed Access Road
- Proposed Right-of way
- Proposed Transmission Structures
- Proposed Conductor Pull Site
- Substation
- New Substation Site
- Unimproved Road
- Light Duty Road
- Parcels
- 345kV Transmission Line (Existing)
- 138kV Transmission Line (Existing)
- 46kV Subtransmission Line (Existing)
- Municipal Boundary
- 2 Mile Wide Corridor
- Secondary Highway
- Railroad
- Townships
- Sections

General Plan Designations

- Agriculture
- Federal
- Grazing
- Town Center
- Multi-Use
- Regional Retail
- Slopes 30%
- Industrial
- Industrial Technical
- Interstate Commercial
- Visual Open Space
- Lower-Density Residential
- Medium-Density Residential

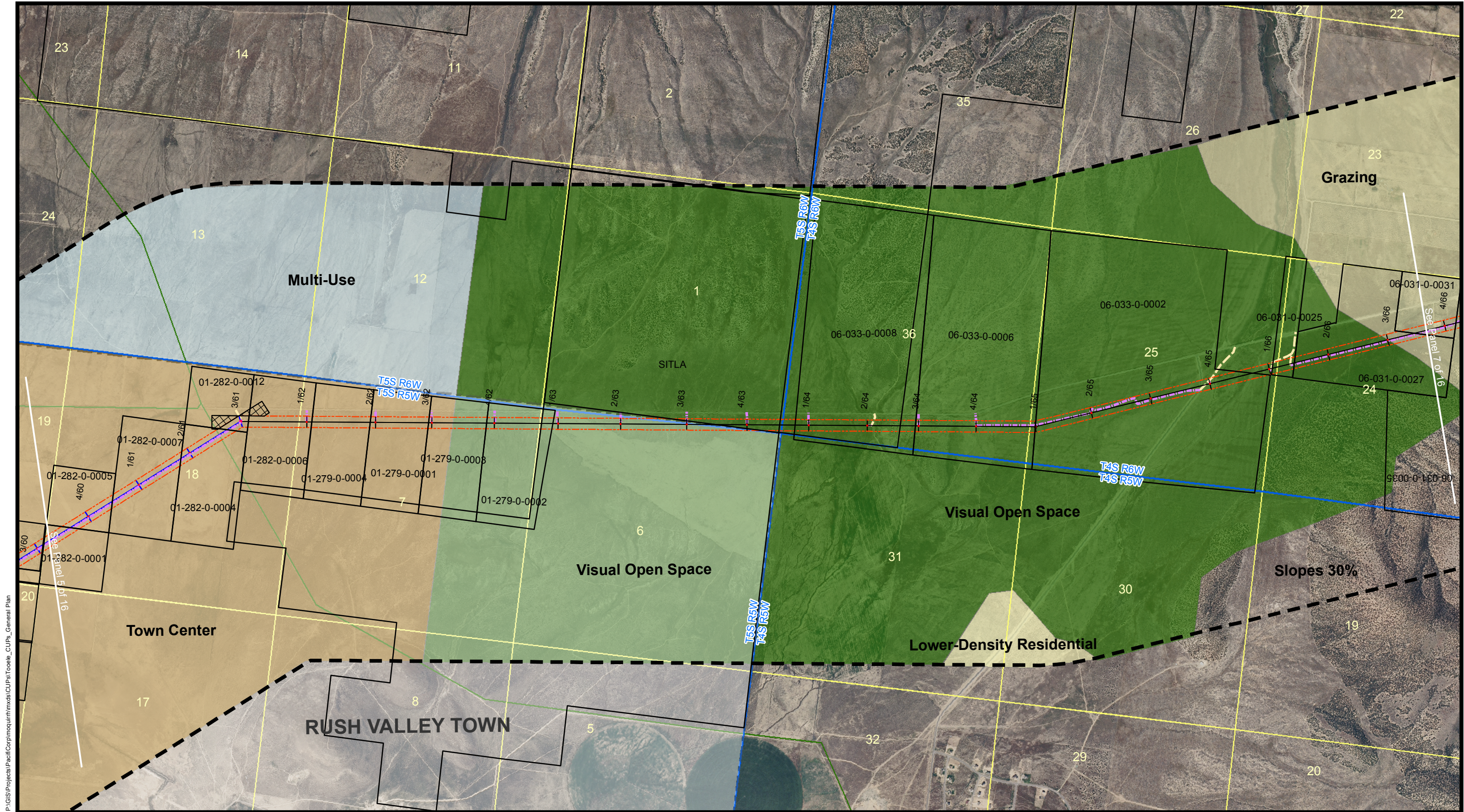
MONA TO OQUIRRH TRANSMISSION CORRIDOR PROJECT Proposed 500kV and 345kV Transmission Lines

Tooele County
Attachment 16 - General Plan Map
Panel 5 of 16

December 2009



0 500 1,000 2,000 3,000 Feet
1 in = 2,000 ft



P:\GIS\Projects\PacificCorp\mouquihm\mxd\CUPa\Tooele_CUPs_General Plan

Aerial Imagery Source Information

Imagery Date: 2009
Source: DigitalGlobe
Resolution: 0.5 Meter
Projection: UTM
Zone: 12
Datum: NAD 83
© DigitalGlobe, Inc. All Rights Reserved

General Reference Features Source Information

Transportation Networks - AGRC 2007
Municipal Boundaries - AGRC, 2004
Parcel Databases - Salt Lake County 2007
PLSS - AGRC, 2005

Legend

- | | |
|----------------------------------|--------------------------------------|
| Proposed Access Road | 345kV Transmission Line (Existing) |
| Proposed Right of way | 138kV Transmission Line (Existing) |
| Proposed Transmission Structures | 46kV Subtransmission Line (Existing) |
| Proposed Conductor Pull Site | Municipal Boundary |
| Substation | 2 Mile Wide Corridor |
| New Substation Site | Secondary Highway |
| Unimproved Road | Railroad |
| Light Duty Road | Townships |
| Parcels | Sections |

General Plan Designations

- | | |
|-----------------|----------------------------|
| Agriculture | Industrial |
| Federal | Industrial Technical |
| Grazing | Interstate Commercial |
| Town Center | Visual Open Space |
| Multi-Use | Lower-Density Residential |
| Regional Retail | Medium-Density Residential |
| Slopes 30% | |

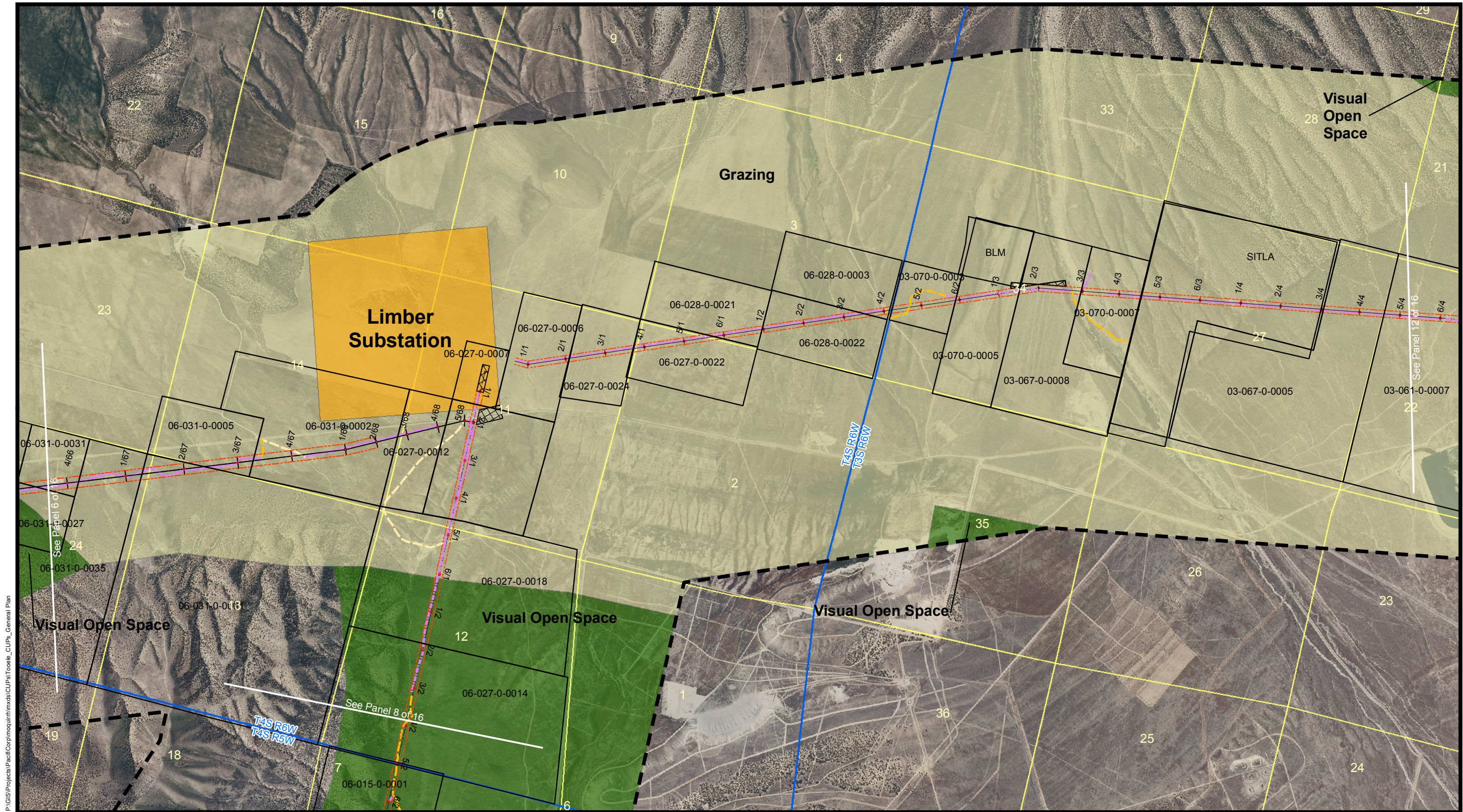
MONA TO OQUIRRH TRANSMISSION CORRIDOR PROJECT Proposed 500kV and 345kV Transmission Lines

Tooele County
Attachment 16 - General Plan Map
Panel 6 of 16

December 2009



0 500 1,000 2,000 3,000 Feet
1 in = 2,000 ft



P:\GIS\Projects\PacificCorp\moulin\mxd\CUPa\Tooele_CUPs_General Plan

Aerial Imagery Source Information

Imagery Date: 2009
Source: DigitalGlobe
Resolution: 0.5 Meter
Projection: UTM
Zone: 12
Datum: NAD 83
© DigitalGlobe, Inc. All Rights Reserved

General Reference Features Source Information

Transportation Networks - AGRC 2007
Municipal Boundaries - AGRC, 2004
Parcel Databases - Salt Lake County 2007
PLSS - AGRC, 2005

Legend

- | | |
|----------------------------------|--------------------------------------|
| Proposed Access Road | 345kV Transmission Line (Existing) |
| Proposed Right-of way | 138kV Transmission Line (Existing) |
| Proposed Transmission Structures | 46kV Subtransmission Line (Existing) |
| Proposed Conductor Pull Site | Municipal Boundary |
| Substation | 2 Mile Wide Corridor |
| New Substation Site | Secondary Highway |
| Unimproved Road | Railroad |
| Light Duty Road | Townships |
| Parcels | Sections |

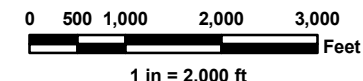
General Plan Designations

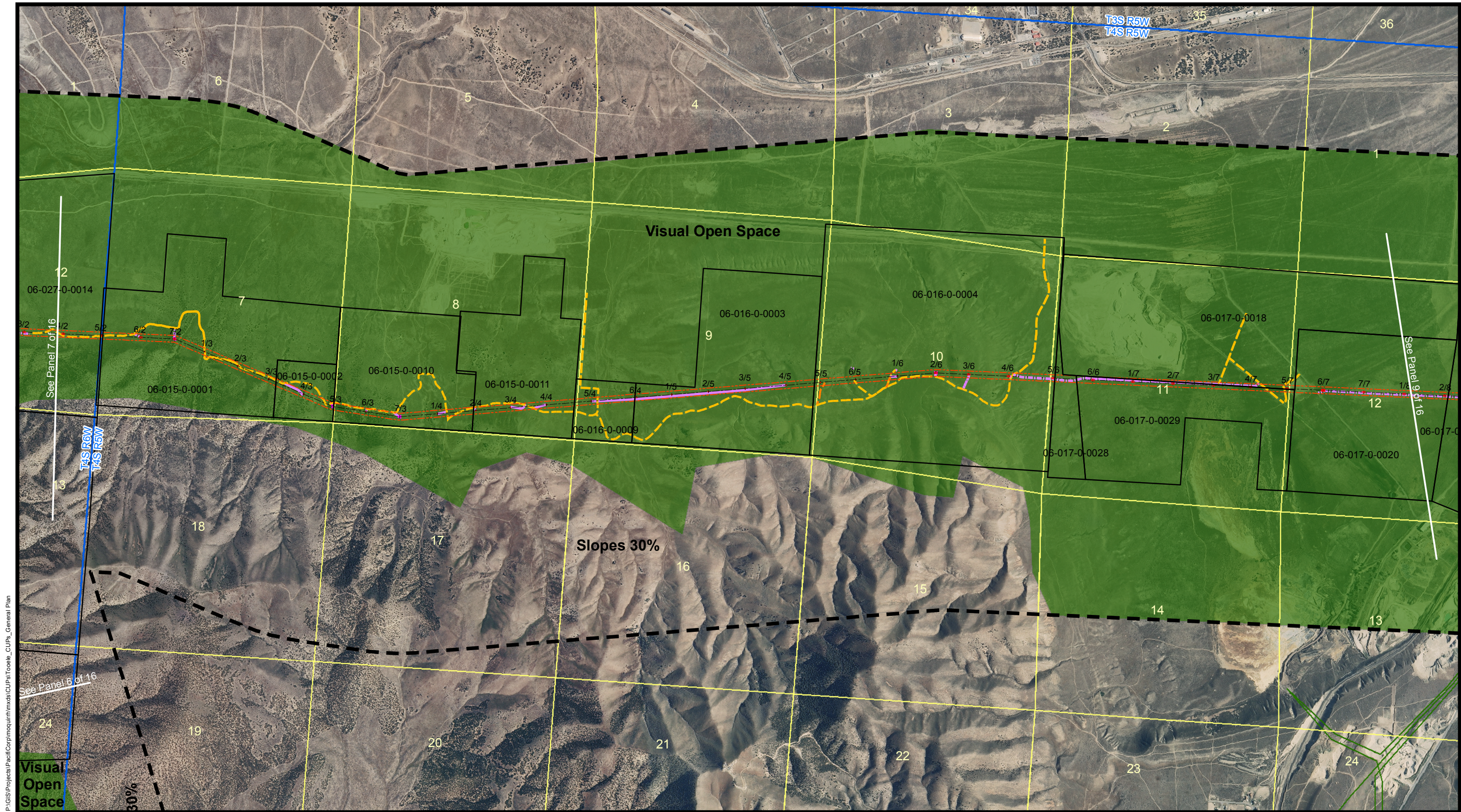
- | | |
|-----------------|----------------------------|
| Agriculture | Industrial |
| Federal | Industrial Technical |
| Grazing | Interstate Commercial |
| Town Center | Visual Open Space |
| Multi-Use | Lower-Density Residential |
| Regional Retail | Medium-Density Residential |
| Slopes 30% | |

MONA TO OQUIRRH TRANSMISSION CORRIDOR PROJECT
Proposed 500kV and 345kV Transmission Lines

Tooele County
Attachment 16 - General Plan Map
Panel 7 of 16

December 2009





P:\GIS\Projects\PacificCorp\mxd\hmxds\CUPa\Tooele_CUPs_General Plan

Aerial Imagery Source Information

Imagery Date: 2009
Source: DigitalGlobe
Resolution: 0.5 Meter
Projection: UTM
Zone: 12
Datum: NAD 83
© DigitalGlobe, Inc. All Rights Reserved

General Reference Features Source Information

Transportation Networks - AGRC 2007
Municipal Boundaries - AGRC, 2004
Parcel Databases - Salt Lake County 2007
PLSS - AGRC, 2005

Legend

- | | |
|----------------------------------|--------------------------------------|
| Proposed Access Road | 345kV Transmission Line (Existing) |
| Proposed Right-of way | 138kV Transmission Line (Existing) |
| Proposed Transmission Structures | 46kV Subtransmission Line (Existing) |
| Proposed Conductor Pull Site | Municipal Boundary |
| Substation | 2 Mile Wide Corridor |
| New Substation Site | Secondary Highway |
| Unimproved Road | Railroad |
| Light Duty Road | Townships |
| Parcels | Sections |

General Plan Designations

- | | |
|-----------------|----------------------------|
| Agriculture | Industrial |
| Federal | Industrial Technical |
| Grazing | Interstate Commercial |
| Town Center | Visual Open Space |
| Multi-Use | Lower-Density Residential |
| Regional Retail | Medium-Density Residential |
| Slopes 30% | |

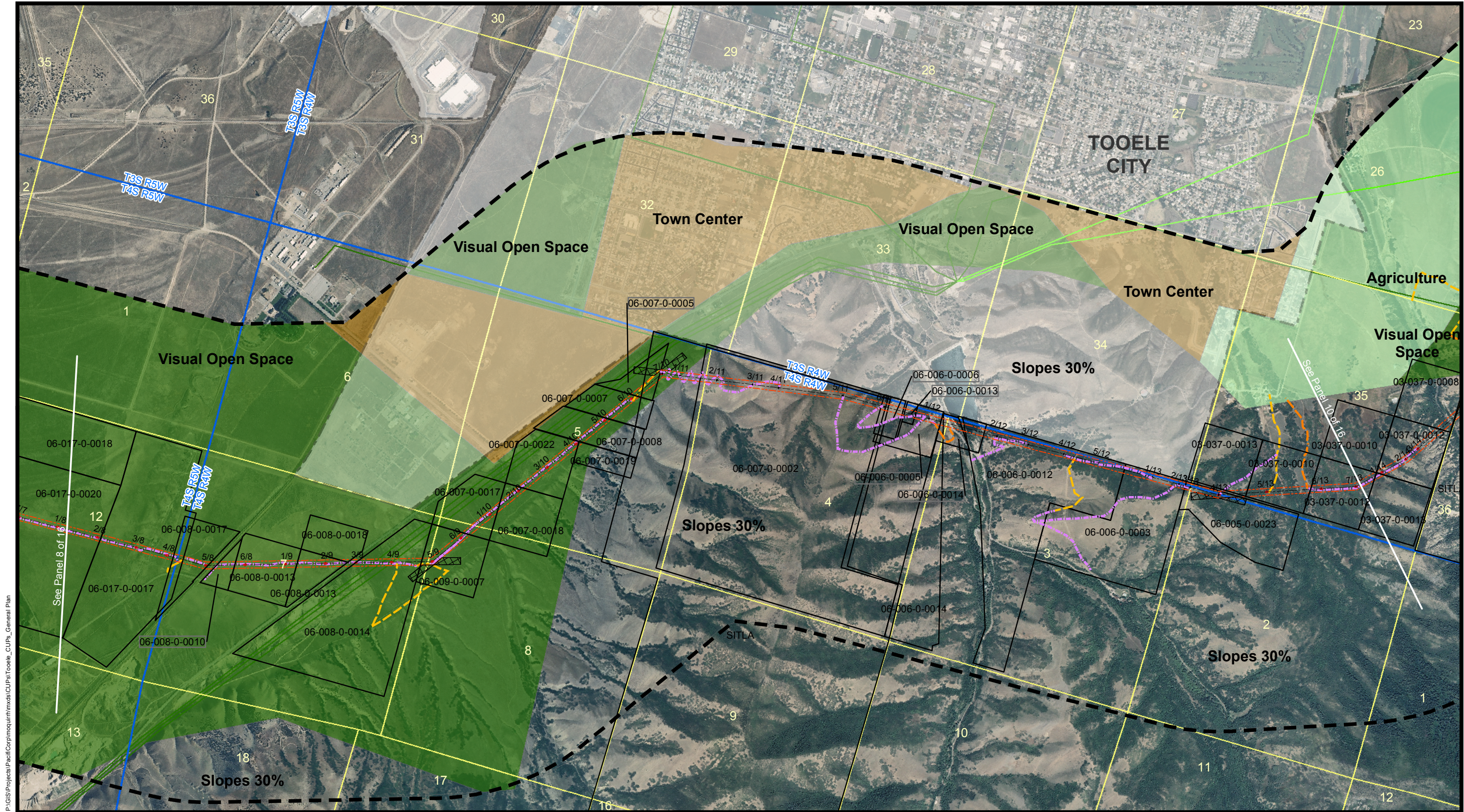
MONA TO OQUIRRH TRANSMISSION CORRIDOR PROJECT Proposed 500kV and 345kV Transmission Lines

Tooele County
Attachment 16 - General Plan Map
Panel 8 of 16

December 2009



0 500 1,000 2,000 3,000 Feet
1 in = 2,000 ft



P:\GIS\Projects\PacificCorp\modular\hmxds\CUPa\Tooele_CUPs_General Plan

Aerial Imagery Source Information

Imagery Date: 2009
Source: DigitalGlobe
Resolution: 0.5 Meter
Projection: UTM
Zone: 12
Datum: NAD 83
© DigitalGlobe, Inc. All Rights Reserved

General Reference Features Source Information

Transportation Networks - AGRC 2007
Municipal Boundaries - AGRC, 2004
Parcel Databases - Salt Lake County 2007
PLSS - AGRC, 2005

Legend

- Proposed Access Road
- Proposed Right of way
- Proposed Transmission Structures
- Proposed Conductor Pull Site
- Substation
- New Substation Site
- Unimproved Road
- Light Duty Road
- Parcels
- 345kV Transmission Line (Existing)
- 138kV Transmission Line (Existing)
- 46kV Subtransmission Line (Existing)
- Municipal Boundary
- 2 Mile Wide Corridor
- Secondary Highway
- Railroad
- Townships
- Sections

General Plan Designations

- Agriculture
- Federal
- Grazing
- Town Center
- Multi-Use
- Regional Retail
- Slopes 30%
- Industrial
- Industrial Technical
- Interstate Commercial
- Visual Open Space
- Lower-Density Residential
- Medium-Density Residential

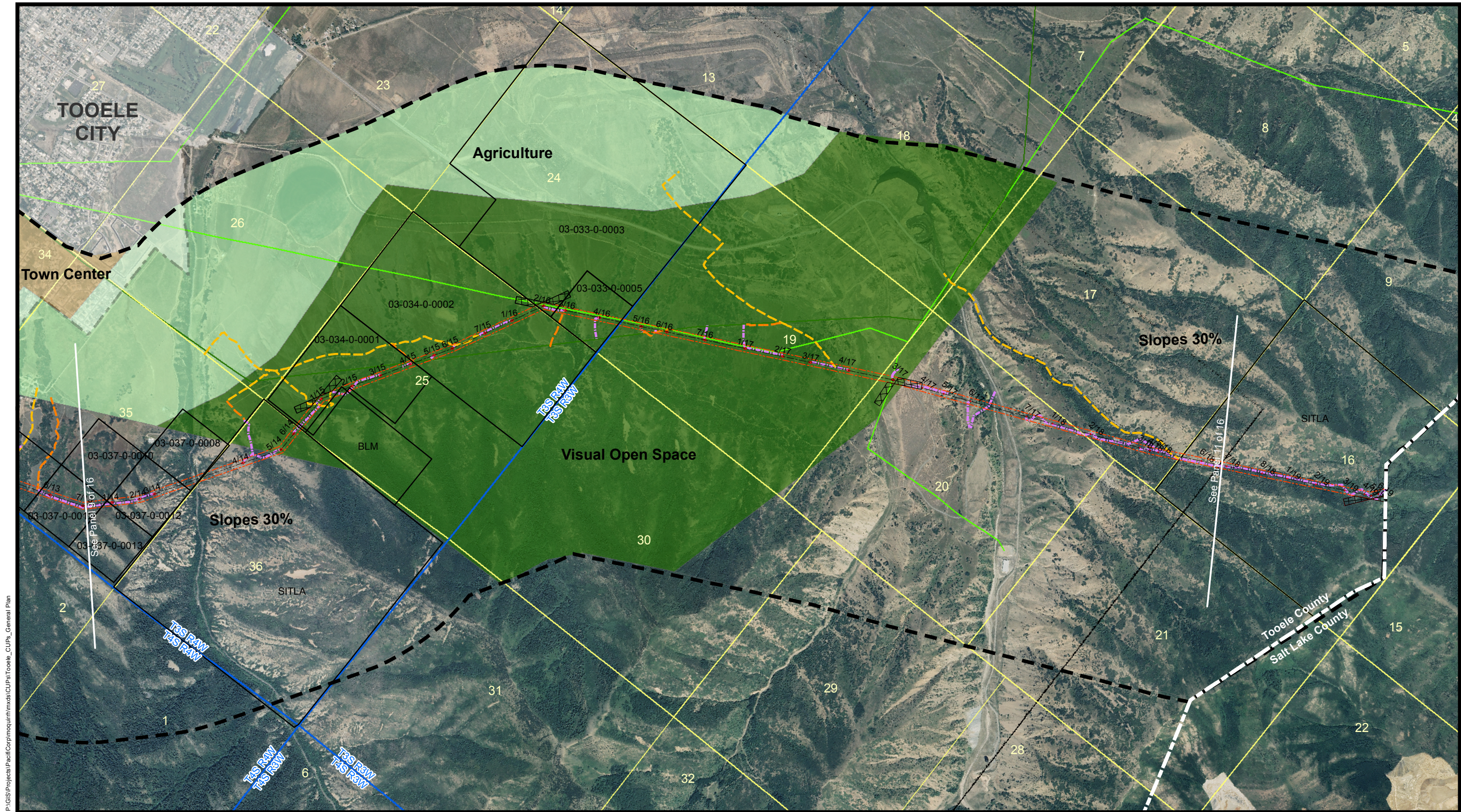
MONA TO OQUIRRH TRANSMISSION CORRIDOR PROJECT Proposed 500kV and 345kV Transmission Lines

Tooele County
Attachment 16 - General Plan Map
Panel 9 of 16

December 2009



0 500 1,000 2,000 3,000 Feet
1 in = 2,000 ft



P:\GIS\Projects\PacificCorp\mouquih\mxd\CUPa\Tooele_CUPs_General Plan

Aerial Imagery Source Information

Imagery Date: 2009
Source: DigitalGlobe
Resolution: 0.5 Meter
Projection: UTM
Zone: 12
Datum: NAD 83
© DigitalGlobe, Inc. All Rights Reserved

General Reference Features Source Information

Transportation Networks - AGRC 2007
Municipal Boundaries - AGRC, 2004
Parcel Databases - Salt Lake County 2007
PLSS - AGRC, 2005

Legend

- Proposed Access Road
- Proposed Right-of-way
- Proposed Transmission Structures
- Proposed Conductor Pull Site
- Substation
- New Substation Site
- Unimproved Road
- Light Duty Road
- Parcels
- 345kV Transmission Line (Existing)
- 138kV Transmission Line (Existing)
- 46kV Subtransmission Line (Existing)
- Municipal Boundary
- 2 Mile Wide Corridor
- Secondary Highway
- Railroad
- Townships
- Sections

General Plan Designations

- Agriculture
- Federal
- Grazing
- Town Center
- Multi-Use
- Regional Retail
- Slopes 30%
- Industrial
- Industrial Technical
- Interstate Commercial
- Visual Open Space
- Lower-Density Residential
- Medium-Density Residential

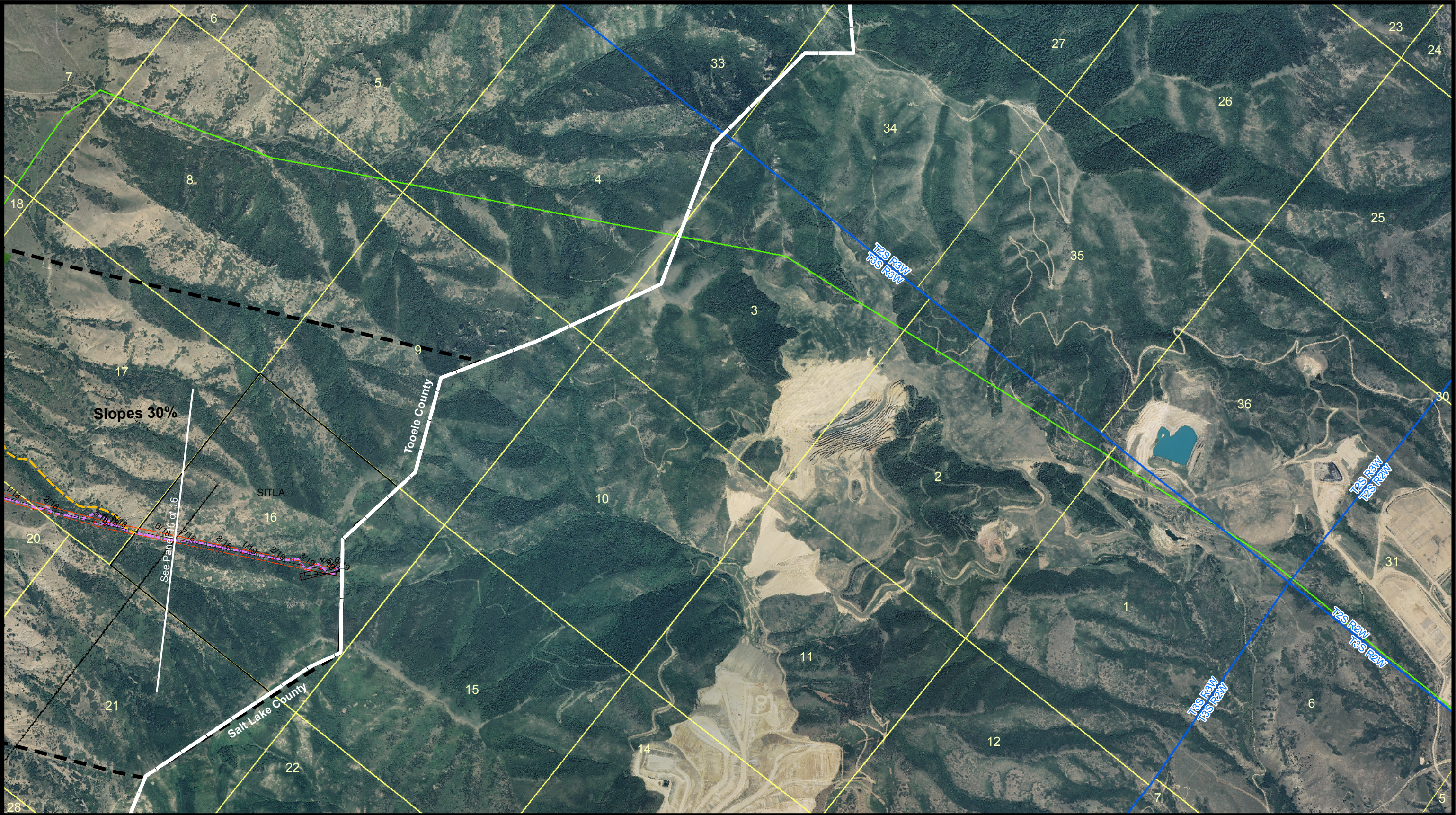
MONA TO OQUIRRH TRANSMISSION CORRIDOR PROJECT Proposed 500kV and 345kV Transmission Lines

Tooele County
Attachment 16 - General Plan Map
Panel 10 of 16

December 2009



0 500 1,000 2,000 3,000 Feet
1 in = 2,000 ft



Aerial Imagery Source Information

Imagery Date: 2009
Source: DigitalGlobe
Resolution: 0.5 Meter
Projection: UTM
Zone: 12
Datum: NAD 83
© DigitalGlobe, Inc. All Rights Reserved

General Reference Features Source Information

Transportation Networks - AGRC 2007
Municipal Boundaries - AGRC, 2004
Parcel Databases - Salt Lake County 2007
PLSS - AGRC, 2005

Legend

Proposed Access Road	345kV Transmission Line (Existing)
Proposed Right-of way	138kV Transmission Line (Existing)
Proposed Transmission Structures	46kV Subtransmission Line (Existing)
Proposed Conductor Pull Site	Municipal Boundary
Substation	2 Mile Wide Corridor
New Substation Site	Secondary Highway
Unimproved Road	Railroad
Light Duty Road	Townships
Parcels	Sections

General Plan Designations

Agriculture	Industrial
Federal	Industrial Technical
Grazing	Interstate Commercial
Town Center	Visual Open Space
Multi-Use	Lower-Density Residential
Regional Retail	Medium-Density Residential
Slopes 30%	

MONA TO OQUIRRH TRANSMISSION CORRIDOR PROJECT
Proposed 500kV and 345kV Transmission Lines

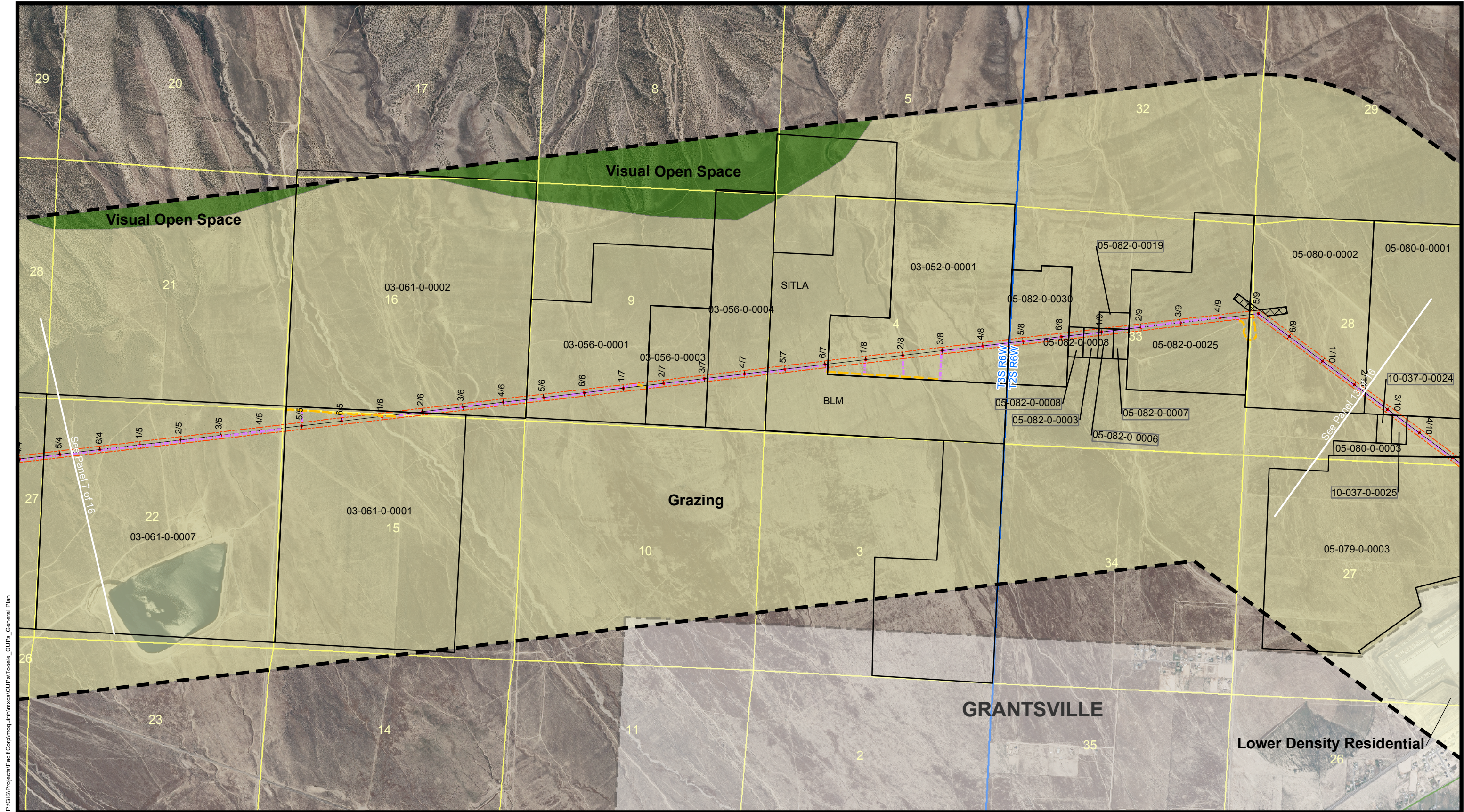
Tooele County
Attachment 16 - General Plan Map
Panel 11 of 16

December 2009

ROCKY MOUNTAIN POWER
A DIVISION OF PACIFICORP

0 500 1,000 2,000 3,000 Feet

1 in = 2,000 ft



P:\GIS\Projects\PacificCorp\modular\hmxds\CUPa\Tooele_CUPs_General Plan

Aerial Imagery Source Information

Imagery Date: 2009
Source: DigitalGlobe
Resolution: 0.5 Meter
Projection: UTM
Zone: 12
Datum: NAD 83
© DigitalGlobe, Inc. All Rights Reserved

General Reference Features Source Information

Transportation Networks - AGRC 2007
Municipal Boundaries - AGRC, 2004
Parcel Databases - Salt Lake County 2007
PLSS - AGRC, 2005

Legend

- | | |
|----------------------------------|--------------------------------------|
| Proposed Access Road | 345kV Transmission Line (Existing) |
| Proposed Right-of-way | 138kV Transmission Line (Existing) |
| Proposed Transmission Structures | 46kV Subtransmission Line (Existing) |
| Proposed Conductor Pull Site | Municipal Boundary |
| Substation | 2 Mile Wide Corridor |
| New Substation Site | Secondary Highway |
| Unimproved Road | Railroad |
| Light Duty Road | Townships |
| Parcels | Sections |

General Plan Designations

- | | |
|-----------------|----------------------------|
| Agriculture | Industrial |
| Federal | Industrial Technical |
| Grazing | Interstate Commercial |
| Town Center | Visual Open Space |
| Multi-Use | Lower-Density Residential |
| Regional Retail | Medium-Density Residential |
| Slopes 30% | |

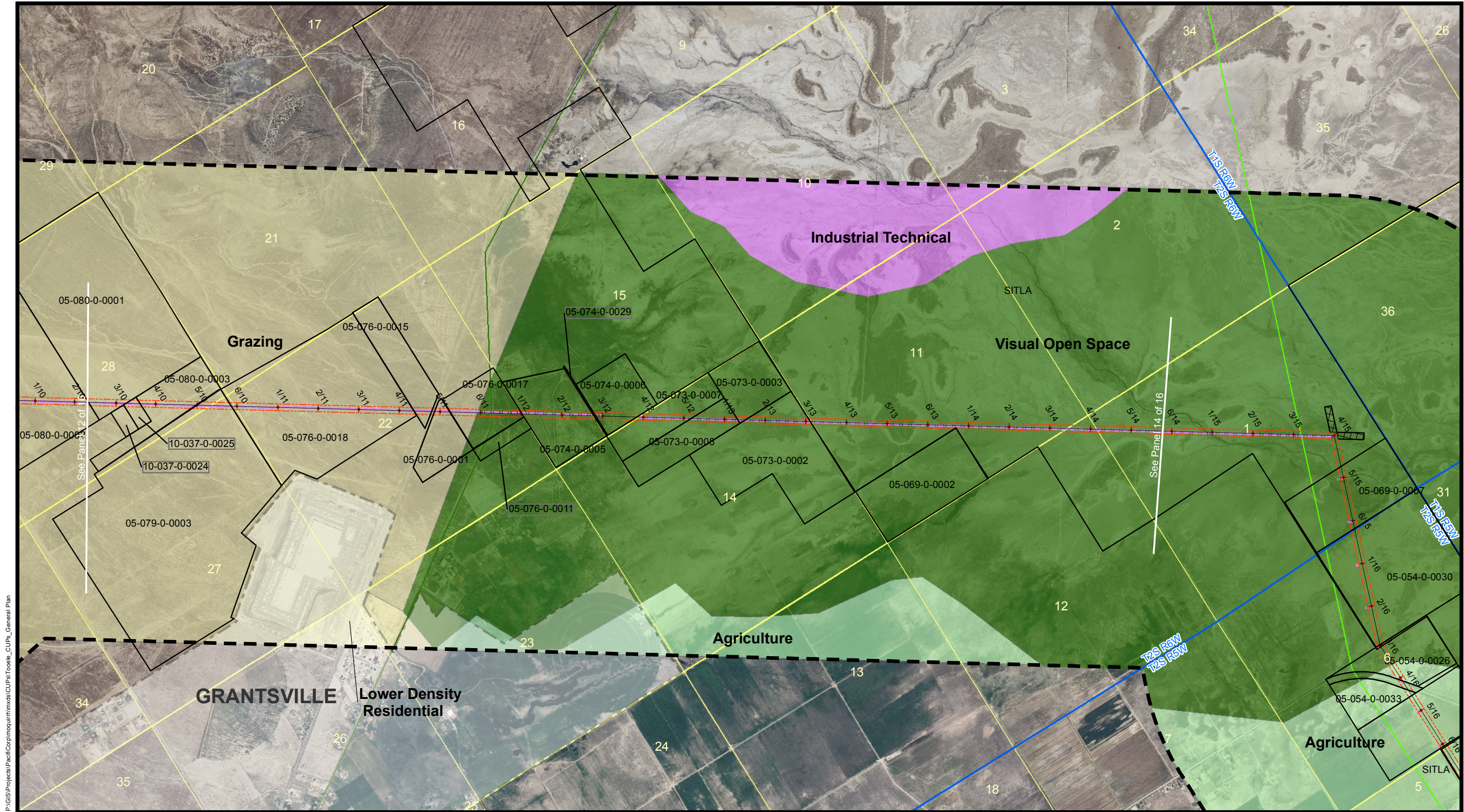
MONA TO OQUIRRH TRANSMISSION CORRIDOR PROJECT Proposed 500kV and 345kV Transmission Lines

Tooele County
Attachment 16 - General Plan Map
Panel 12 of 16

December 2009



0 500 1,000 2,000 3,000 Feet
1 in = 2,000 ft



P:\GIS\Projects\PacificCorp\mouquihm\mxd\CUPa\Tooele_CUPs_General Plan

Aerial Imagery Source Information

Imagery Date: 2009
Source: DigitalGlobe
Resolution: 0.5 Meter
Projection: UTM
Zone: 12
Datum: NAD 83
© DigitalGlobe, Inc. All Rights Reserved

General Reference Features Source Information

Transportation Networks - AGRC 2007
Municipal Boundaries - AGRC, 2004
Parcel Databases - Salt Lake County 2007
PLSS - AGRC, 2005

Legend

- Proposed Access Road
- Proposed Right of way
- Proposed Transmission Structures
- Proposed Conductor Pull Site
- Substation
- New Substation Site
- Unimproved Road
- Light Duty Road
- Parcels
- 345kV Transmission Line (Existing)
- 138kV Transmission Line (Existing)
- 46kV Subtransmission Line (Existing)
- Municipal Boundary
- 2 Mile Wide Corridor
- Secondary Highway
- Railroad
- Townships
- Sections

General Plan Designations

- Agriculture
- Federal
- Grazing
- Town Center
- Multi-Use
- Regional Retail
- Slopes 30%
- Industrial
- Industrial Technical
- Interstate Commercial
- Visual Open Space
- Lower-Density Residential
- Medium-Density Residential

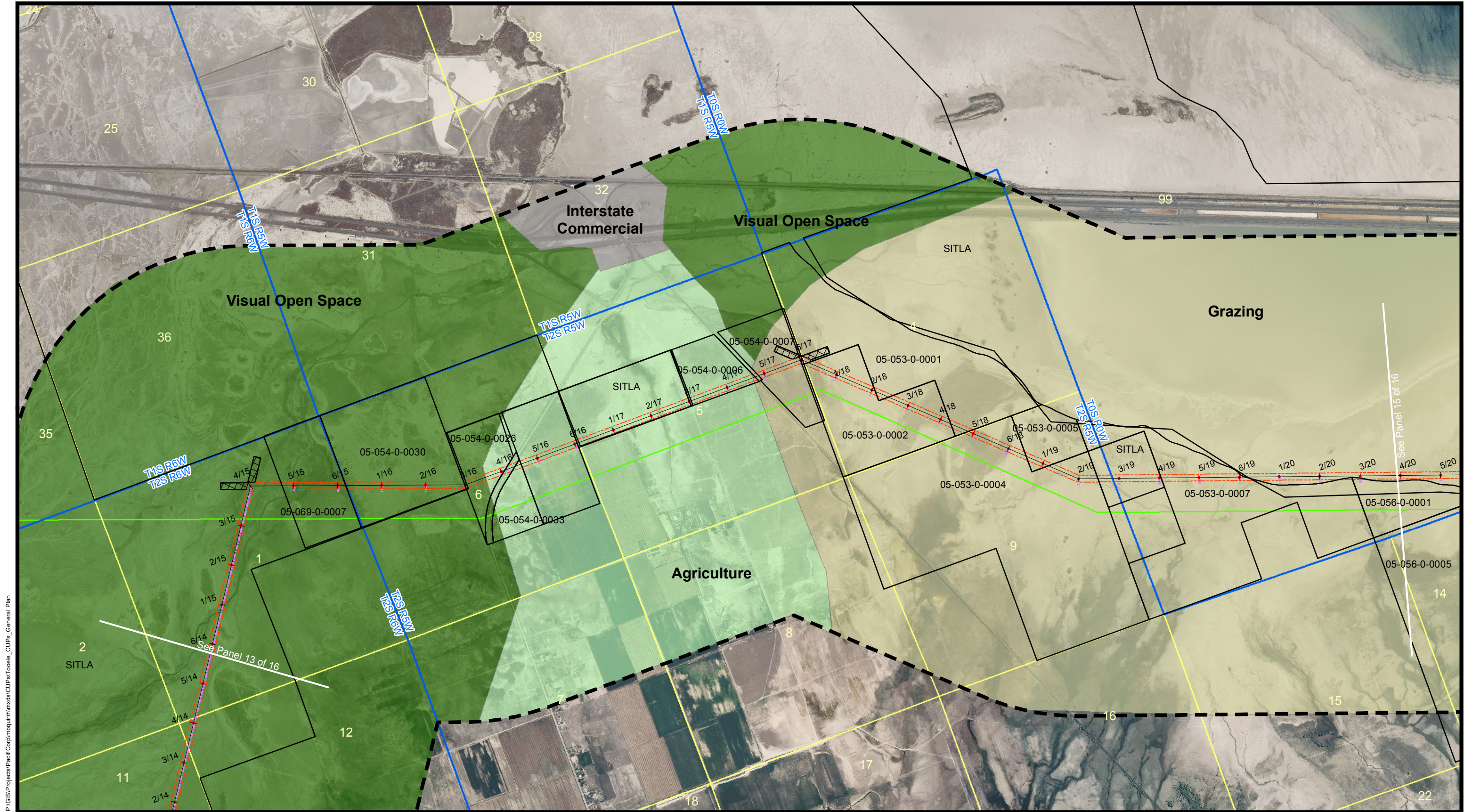
MONA TO OQUIRRH TRANSMISSION CORRIDOR PROJECT Proposed 500kV and 345kV Transmission Lines

Tooele County
Attachment 16 - General Plan Map
Panel 13 of 16

December 2009



0 500 1,000 2,000 3,000 Feet
1 in = 2,000 ft



P:\GIS\Projects\PacificCorp\mouquihm\mxd\CUPa\Tooele_CUPs_General Plan

Aerial Imagery Source Information

Imagery Date: 2009
Source: DigitalGlobe
Resolution: 0.5 Meter
Projection: UTM
Zone: 12
Datum: NAD 83
© DigitalGlobe, Inc. All Rights Reserved

General Reference Features Source Information

Transportation Networks - AGRC 2007
Municipal Boundaries - AGRC, 2004
Parcel Databases - Salt Lake County 2007
PLSS - AGRC, 2005

Legend

- Proposed Access Road
- Proposed Right-of way
- Proposed Transmission Structures
- Proposed Conductor Pull Site
- Substation
- New Substation Site
- Unimproved Road
- Light Duty Road
- Parcels
- 345kV Transmission Line (Existing)
- 138kV Transmission Line (Existing)
- 46kV Subtransmission Line (Existing)
- Municipal Boundary
- 2 Mile Wide Corridor
- Secondary Highway
- Railroad
- Townships
- Sections

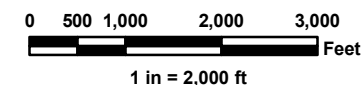
General Plan Designations

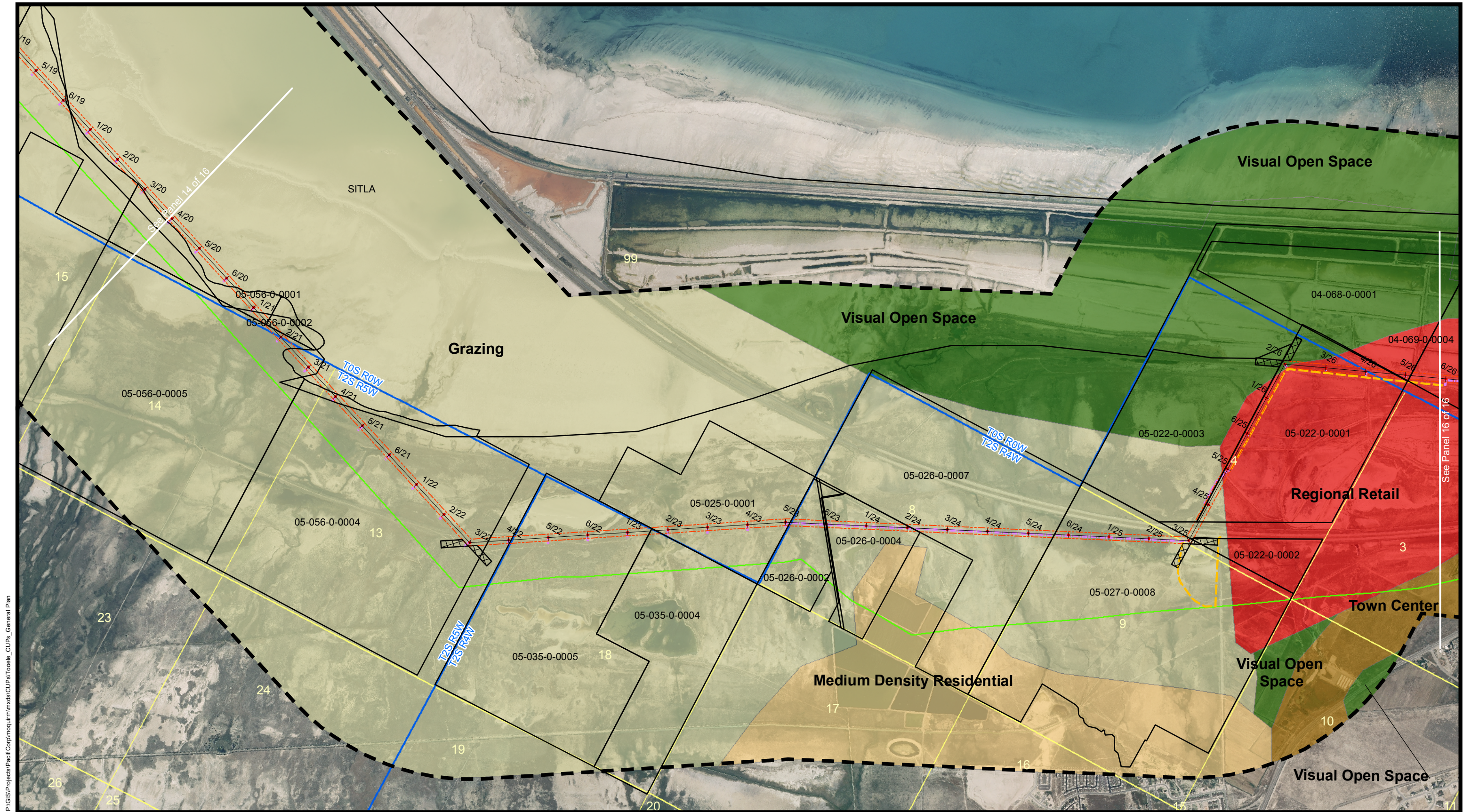
- Agriculture
- Federal
- Grazing
- Town Center
- Multi-Use
- Regional Retail
- Slopes 30%
- Industrial
- Industrial Technical
- Interstate Commercial
- Visual Open Space
- Lower-Density Residential
- Medium-Density Residential

MONA TO OQUIRRH TRANSMISSION CORRIDOR PROJECT Proposed 500kV and 345kV Transmission Lines

Tooele County
Attachment 16 - General Plan Map
Panel 14 of 16

December 2009





P:\GIS\Projects\PacificCorp\mouquihm\mxd\CUPa\Tooele_CUPs_General Plan

Aerial Imagery Source Information

Imagery Date: 2009
Source: DigitalGlobe
Resolution: 0.5 Meter
Projection: UTM
Zone: 12
Datum: NAD 83
© DigitalGlobe, Inc. All Rights Reserved

General Reference Features Source Information

Transportation Networks - AGRC 2007
Municipal Boundaries - AGRC, 2004
Parcel Databases - Salt Lake County 2007
PLSS - AGRC, 2005

Legend

- | | |
|----------------------------------|--------------------------------------|
| Proposed Access Road | 345kV Transmission Line (Existing) |
| Proposed Right-of way | 138kV Transmission Line (Existing) |
| Proposed Transmission Structures | 46kV Subtransmission Line (Existing) |
| Proposed Conductor Pull Site | Municipal Boundary |
| Substation | 2 Mile Wide Corridor |
| New Substation Site | Secondary Highway |
| Unimproved Road | Railroad |
| Light Duty Road | Townships |
| Parcels | Sections |

General Plan Designations

- | | |
|-----------------|----------------------------|
| Agriculture | Industrial |
| Federal | Industrial Technical |
| Grazing | Interstate Commercial |
| Town Center | Visual Open Space |
| Multi-Use | Lower-Density Residential |
| Regional Retail | Medium-Density Residential |
| Slopes 30% | |

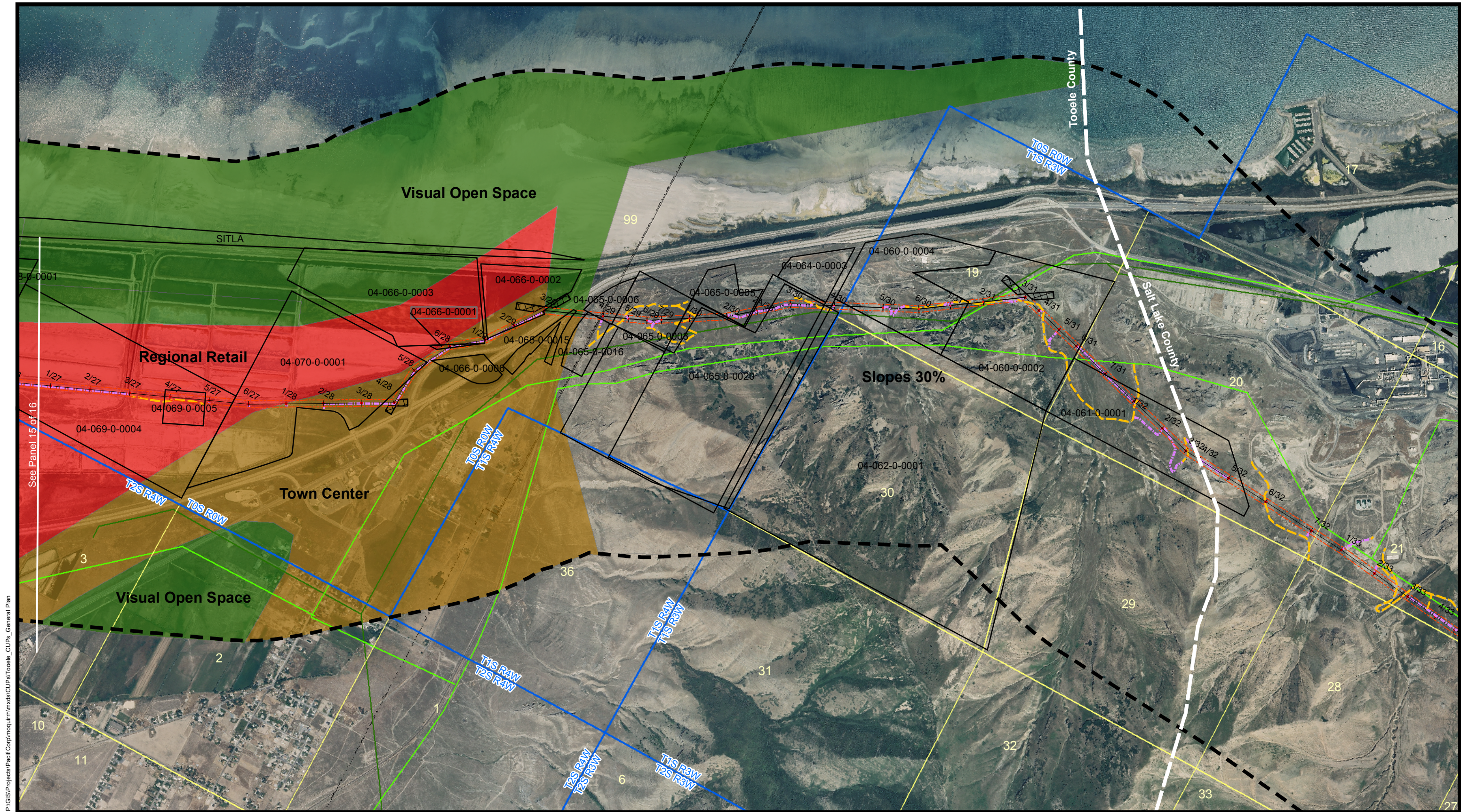
MONA TO OQUIRRH TRANSMISSION CORRIDOR PROJECT Proposed 500kV and 345kV Transmission Lines

Tooele County
Attachment 16 - General Plan Map
Panel 15 of 16

December 2009



0 500 1,000 2,000 3,000 Feet
1 in = 2,000 ft



P:\GIS\Projects\PacificCorp\moulin\mxd\CUPa\Tooele_CUPs_General Plan

Aerial Imagery Source Information

Imagery Date: 2009
Source: DigitalGlobe
Resolution: 0.5 Meter
Projection: UTM
Zone: 12
Datum: NAD 83
© DigitalGlobe, Inc. All Rights Reserved

General Reference Features Source Information

Transportation Networks - AGRC 2007
Municipal Boundaries - AGRC, 2004
Parcel Databases - Salt Lake County 2007
PLSS - AGRC, 2005

Legend

- | | |
|----------------------------------|--------------------------------------|
| Proposed Access Road | 345kV Transmission Line (Existing) |
| Proposed Right-of way | 138kV Transmission Line (Existing) |
| Proposed Transmission Structures | 46kV Subtransmission Line (Existing) |
| Proposed Conductor Pull Site | Municipal Boundary |
| Substation | 2 Mile Wide Corridor |
| New Substation Site | Secondary Highway |
| Unimproved Road | Railroad |
| Light Duty Road | Townships |
| Parcels | Sections |

General Plan Designations

- | | |
|-----------------|----------------------------|
| Agriculture | Industrial |
| Federal | Industrial Technical |
| Grazing | Interstate Commercial |
| Town Center | Visual Open Space |
| Multi-Use | Lower-Density Residential |
| Regional Retail | Medium-Density Residential |
| Slopes 30% | |

MONA TO OQUIRRH TRANSMISSION CORRIDOR PROJECT Proposed 500kV and 345kV Transmission Lines

Tooele County
Attachment 16 - General Plan Map
Panel 16 of 16

December 2009



0 500 1,000 2,000 3,000 Feet
1 in = 2,000 ft