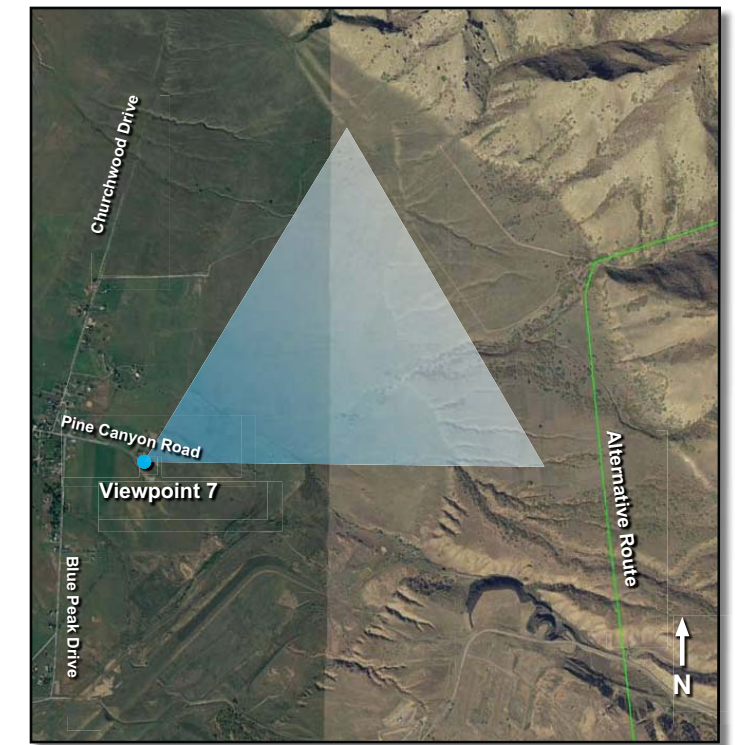




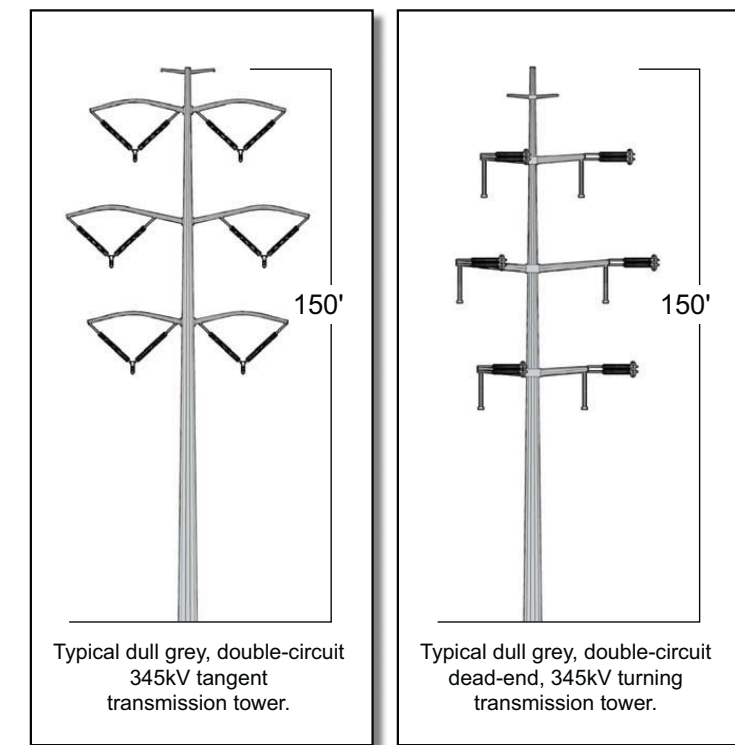
Existing Condition – Viewing east toward the North Oquirrh Management Area (NOMA).



View Location: East end of Pine Canyon Road.



Simulated Condition – Typical 345kV transmission line crossing the NOMA.



Mona to Oquirrh Transmission Corridor Project

Visual Simulation 4

Photo Date: 12-12-08 Time: 3:26 p.m.
 Structure models that were used in the simulations were created using diagrams provided by Rocky Mountain Power. This simulation represents a schematic concept design that will be refined and finalized. Actual final structure sizes, heights, materials, and conductor sag will vary on a case-by-case basis.