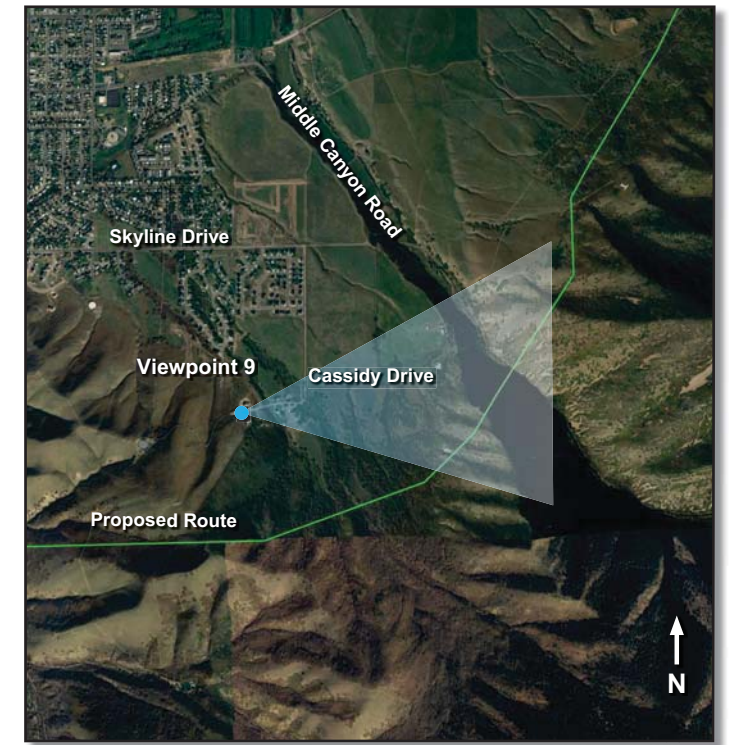




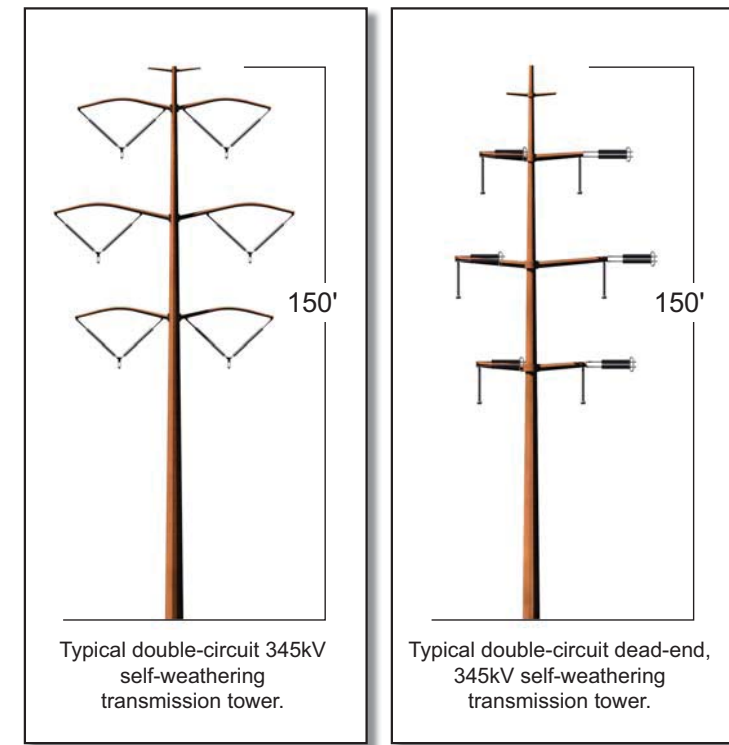
Existing Condition – Viewing east towards Middle Canyon and Oquirrh Mountains.



View Location: West end of Cassidy Drive, Tooele.



Simulated Condition – Proposed 345kV transmission line.



Mona to Oquirrh Transmission Corridor Project

Visual Simulation 5 B

Photo Date: 09-08-09 Time: 12:16 p.m.

Structure models that were used in the simulations were created using diagrams provided by Rocky Mountain Power. This simulation represents a schematic concept design that will be refined and finalized. Actual final structure sizes, heights, materials, and conductor sag will vary on a case-by-case basis.

January 2010