



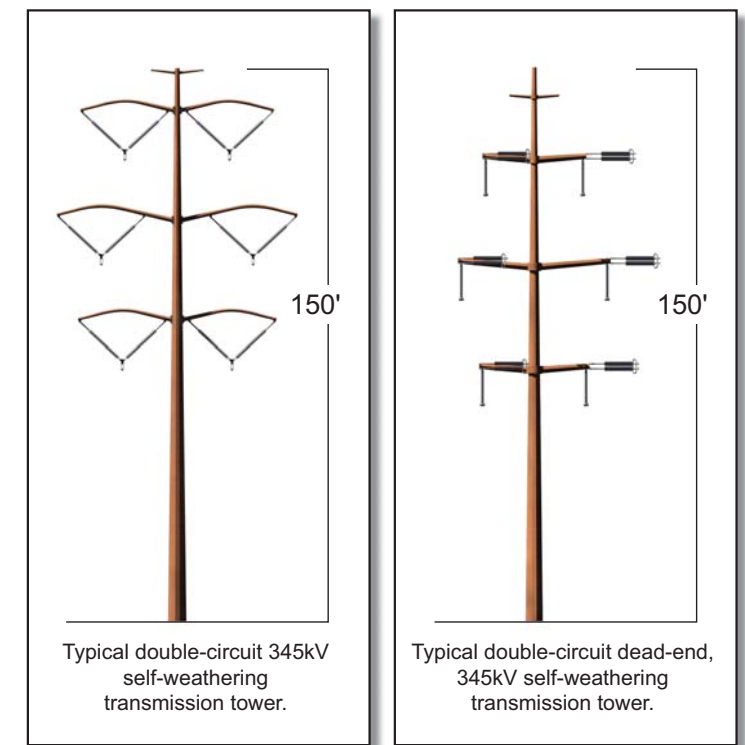
**Existing Condition – Viewing east, southeast towards Middle Canyon and the Oquirrh Mountains.**



**View Location:** Middle Canyon Road at Oquirrh Hills Golf Course.



**Simulated Condition – Proposed 345kV transmission line.**



**Mona to Oquirrh Transmission Corridor Project**

**Visual Simulation 6 B**

Photo Date: 09-08-09 Time: 12:47 p.m.  
 Structure models that were used in the simulations were created using diagrams provided by Rocky Mountain Power. This simulation represents a schematic concept design that will be refined and finalized. Actual final structure sizes, heights, materials, and conductor sag will vary on a case-by-case basis.