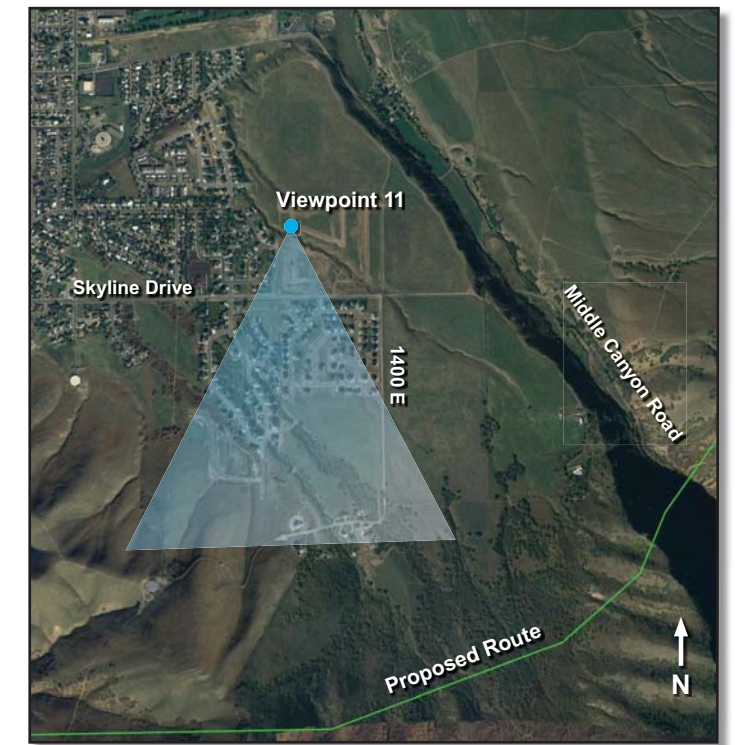




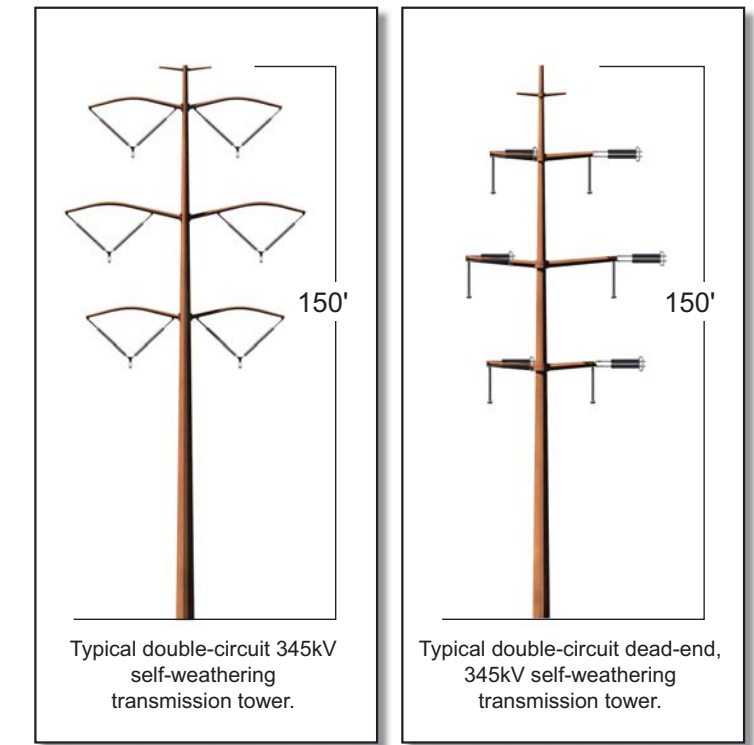
Existing Condition – Viewing south towards the Oquirrh Mountains.



View Location: Intersection of Via La Costa and 1230E, Tooele.



Simulated Condition – Proposed 345kV transmission line.



Mona to Oquirrh Transmission Corridor Project

Visual Simulation 7 B

Photo Date: 09-08-09 Time: 12:16 p.m.
 Structure models that were used in the simulations were created using diagrams provided by Rocky Mountain Power. This simulation represents a schematic concept design that will be refined and finalized. Actual final structure sizes, heights, materials, and conductor sag will vary on a case-by-case basis.