

**MINUTES
OF THE REGULAR MEETING OF THE
TOOELE COUNTY BOARD OF COMMISSIONERS
HELD JULY 21, 2009**

Chairman Johnson called the meeting to order at 3:00 p.m. The time, place and agenda of the meeting had been provided to the Tooele Transcript Bulletin and to each member of the governing body by delivering copies of the notice and agenda at least two days before to each of them.

1. **ROLL CALL.** The clerk called the roll which showed Commissioners Colleen Johnson, Chairman; Jerry Hurst and Bruce Clegg present. Also present were Scott Broadhead, Deputy Attorney, and Marilyn Gillette, Clerk. Doug Hogan, Attorney, was excused.
2. **TAX ADJUSTMENTS.** Commissioner Clegg moved to approve the following tax adjustments: A) Jose Bravo-Agular, Plate #PO01161185. Refund age-base fee paid June 22, 2009. Vehicle could not pass a safety inspection. Unable to complete registration. Relief amount \$-10.00; B) Motor Sportsland (Dealership), Plate #031970Z. Trailer was registered as a camp trailer and paid \$175.00 age-base fee. Should have been a tent trailer which fee is \$70.00. Refund overpayment to the dealership who paid the fees. Relief amount \$-105.00; C) TEM Enterprises DBA Casino Express Airlines, Serial #98-000-0-0852. Owner did not receive a 2006 property tax statement. Owners were notified in 2007 of the delinquent tax. Commission agrees to waive one year's interest due on the delinquent 2006 tax. Interest is waived in the amount of \$15,329.20. Amount due \$13,421.72. Commissioner Hurst seconded the motion. All concurred.
3. **INVOICES.** Commissioner Clegg moved to approve Warrants issued on July 16, 2009 in the amount of \$1,280,515.64. Check #103715 to #103979. Commissioner Hurst seconded the motion. All concurred.
4. **COMMUNITY DEVELOPMENT BLOCK GRANT AMENDMENT #1 TO CONTRACT #08-2411.** Commissioner Johnson stated that this is an amendment to the CDBG in the amount of \$200,000, which will go towards a transitional housing project. Commissioner Hurst moved to approve the Community Development Block Grant Amendment #1 to Contract #08-2411. Commissioner Clegg seconded the motion. All concurred.
5. **RESOLUTION 2009-13 - ENACTING SUBSECTION 11.P, TIME CARDS, AND MAKING TECHNICAL CORRECTIONS TO SECTION 11, COMPENSATION, OF PERSONNEL POLICIES AND PROCEDURES.** Pam Ayala, HR, discussed this with the Commission. These changes are in cooperation with the Auditor's and include changes to the office time cards, clarification on promotions and demotions, and requesting changes to overtime policy for overtime pay. Commissioner Hurst moved to approve Resolution 2009-13 - Enacting Subsection 11.P, Time Cards, and Making Technical Corrections to Section 11, Compensation, of Personnel Policies and Procedures. Commissioner Clegg seconded the motion. All concurred.
6. **FY 2010 CONTRACT FOR LEGAL SERVICES TOOELE COUNTY AREA AGENCY ON AGING AND UTAH LEGAL SERVICES, INC.** Commissioner Johnson stated that this is the same contract we have every year with the Tooele County Senior Citizens and Legal Services in the amount of \$4,289. Commissioner Hurst moved to approve FY2010 Contract for Legal Services, Tooele County Area Agency on Aging and Utah Legal Services, Inc. Commissioner Clegg seconded the motion. All concurred.
7. **DHS CONTRACT FOR MEDICAID AGING WAIVER PROGRAM.**

Commissioner Johnson stated that this is another program associated with the Tooele County Senior Citizens Center, reimbursement for Medicaid waivers. Commissioner Hurst moved to approve the DHS Contract for the Medicaid Aging Waiver Program. Commissioner Clegg seconded the motion. All concurred.

8. MEMORANDUM OF UNDERSTANDING AMONG FEDERAL HIGHWAY ADMINISTRATION, UTAH DIVISION TOOELE COUNTY ENGINEERING DEPARTMENT AND THE UTAH DEPARTMENT OF TRANSPORTATION.

Vern Loveless, Engineering, stated that this issue has been before the Commission before and was approved, but when it got to the state it got lost, so they are starting over again. It deals with the Midvalley Highway's Environmental Study and Engineering Services. Commissioner Hurst moved to approve the Memorandum of Understanding Among Federal Highway Administration, Utah Division Tooele County Engineering Department and the Utah Department of Transportation. Commissioner Clegg seconded the motion. All concurred.

9. ROCKY MOUNTAIN POWER TRANSMISSION LINE. Commissioner Johnson stated that a group of citizens have requested time during the meeting to discuss the Rocky Mountain Power Transmission Line with the Commission. She welcomed the citizens, as well as Representative Jim Gowans and Tooele City Mayor Pat Dunlavy.

Brad Pratt, Chairperson of the Citizens Group that is concerned about the Rocky Mountain Power Transmission Line, said they have become aware of the preferred route of a 345 kilowatt line that is proposed to go through the southeast corner of Tooele City. This group was formed to oppose the routes proposed by Rocky Mountain and the BLM for this project. The route is unacceptable and far too damaging to Tooele County and the residents that live here. The routes pass over two canyons that are used a lot by the community. The proposed route is too close to residents living in this area. Rocky Mountain has not taken into consideration the residents or living standard in the city. There is not an acceptable reason to destroy the beauty or possible future growth in the county. He presented a petition to the Commission with approximately 3,000 signatures, with more that are still out until July 31st, that will bring the total to about 4,000. He asked the elected officials to engage this matter with the same conviction and concern that the Tooele City residents have taken. As a citizens group, they plan to continue their efforts to not allow the current route to take place. As a county, community, and it's leaders, we can protect what is sentimental and sacred to all of us. There is an agreeable solution to this problem, they just need to all sit down and work it out to protect the county.

Jim Weber, Physician and Radiologist at Mountain West Medical Center, is also the Safety Officer at the hospital. He said increased exposure to electric magnetic fields are associated with increasing childhood leukemia. The International Agency for Cancer has designated electric magnetic fields as class two carcinogens which double the chance of childhood leukemia. He is concerned about the risk of his children developing leukemia, as well as other children in the area. He asked the Commissioners to not put these high voltage power lines in such a beautiful area and to not put our children at risk.

Richard Valdez, Tooele High Counselor, agreed with the other comments. He opposes what this power line would do to the block T on the mountain. He discussed the legacy of the T.

Michael Wells, Dentist and Coach, spoke about the damage the proposed power lines would do to the foothills. He supports what has already been said. He appreciated the spirit of cooperation that they have experienced with the City Council and the County Commission. He felt the power lines would leave a scar that would be a tragedy to leave to our children.

Marilyn Roundy, resident, is not opposed to Rocky Mountain Power. She is opposed to the route they want to take through Tooele City and Tooele County. Corner Mountain is a focal point as one drives into Tooele County. She is concerned with the risk of fire that

these power lines would create; even Rocky Mountain Power has voiced this concern. She wondered if they were aware of the winds in this area. She felt the Tooele City Fire Department is not equipped to put out a wildfire in this area and wondered if Rocky Mountain Power has considered the safety of the citizens. These power lines will disrupt the natural habitat of the area. Consider the aesthetic value that these lines will disrupt. The metal polls will not blend in with anything and will also decrease the property value. The maps that they are using do not show the growth in the southeast area so they are not aware of the growth.

Kaye Pratt, resident, read a document from the BLM concerning the placement of utilities, that they should not disrupt scenic vistas; they should be unnoticeable. She asked why the Deseret Peak Complex and Miller Motorsports Park get special protection and the rest of the county doesn't. They would like to have the same protection for the mountains and residents. Deseret Peak Complex and the Miller Motorsports Park can be rebuilt, but no-one can rebuild the mountains. They are grateful that the City Council and county officials haven't signed any documents allowing this. Citizens are granted 90 days to voice their opinion, which is a short time for Rocky Mountain Power to know that the citizens don't want them ruining their views, bringing the danger to the children, or stopping future growth. Rocky Mountain Power is looking at other options. Three options were presented to them, but there is no guarantee they will listen, even with the 4,000 signatures. An Environmental Impact Study was not included in Tooele City's master plan; neither were two natural springs. They are using outdated photos and maps, which do not show the development that has taken place. The BLM was surprised at the development in the Corner Mountain area. Once the power lines are here, they are a permanent fixture and can be added to when needed.

Boyd Spiker, registered voter and retired utility engineer, stated that since moving to Tooele, three aerial power lines have been constructed within a mile of their home. They should be considering all aspects of putting in power, including burying it and doing environmental studies. There are many places in southeast Tooele where multiple lines have been put in the same area. He asked that the Commission protect what's left of the scenery that's in Tooele and not allow the power lines to be built aerially, obstructing the mountains. If we have to have them, they should be put on the west side to minimize the impact.

Dan Egelund, Remax Broker, lives in the southeast part of town. First he thanked the Commissioners for making this an agenda item, and he thanked the officials, Jim, and Pat for being there. He repeated a quote he learned as a scout, "Don't let it be said and said to your shame, that all was clean until you came." He talked about the different areas of the county and asked what legacy the Commissioners want to leave for future generations. The land should be developed for the highest and best use for the best taxes to be used for educating our children. Power lines would cut the value of the property in half. The Commissioners from 20 years ago knew that there wasn't another use for the West Deseret except for the hazardous waste. Rocky Mountain Power should have to pay mitigation fees.

Maxine Grimm, resident, said she was born in Tooele. Her parents and great-grandparents were born in Tooele, and her great-great-grandparents crossed the plains and settled here in 1949. She has traveled the world to many countries, but has yet to find a valley that is as beautiful, wonderful, and peaceful as Tooele Valley. She can't visualize the enormous 200 foot high polls that would ruin the valley. She appealed to all who have a voice to do something; to say we just can't have that happen to Tooele Valley.

Patrick Dunlavy, Tooele City Mayor, thanked the Commissioners for their public service. He is here to support the citizens of this community. Tooele is the greatest city in Utah. He grew up here, and it's important to maintain what this valley is and what it stands for. The City is negotiating with a property owner for 105 acres of property on the east bench so that nothing will be built on the land. He and the City Council have gone on record to oppose this route. They have filed a protest with the BLM. He applauded the committee

for the work that they have done and emotions that they have brought to this issue, as well as the over 4,000 signatures on the petitions. He and the Council acknowledge the fact that Tooele City needs more power, and they support Rocky Mountain Power for the foresight they have shown. There are, however, other routes that they discussed yesterday which would have less of a negative impact. He recommended the west route and asked the Commissioners to not only oppose the east bench route, but to work towards a route that would be less impactful and more positive to bring the needed power to the county. This is a fact-finding opportunity, but BLM and Rocky Mountain Power are hearing the voices. The Council and City have gone on record opposing this plan. There are other routes that will accomplish the task. The east bench route is the worst of them all.

Benjamin Kizer, Senior Class President 2008, wanted to speak for the younger crowd in Tooele. He said the young people are the future of Tooele. He has grown up here for the last 13 years and has fallen in love with this valley. He wants to come back with his kids and wife, and he wants to see the beauty he saw when he was growing up, including the T that he lit. He has an emotional attachment to the mountains and this valley. He speaks for the young people of Tooele Valley, and they do not want this.

Commissioner Johnson thanked everyone for their comments. There was a misunderstanding when she stated that Tooele needs more power. We do, but she is not in favor of this route, the eastside route. Commissioner Hurst said he appreciated everyone getting organized, and he appreciated that they were not just complaining. They are coming up with solutions. The Commission has met with Rocky Mountain Power several times, and they are looking at other alternatives, even a meeting with BLM. They want to find the route that has the least impact. He moved that the Tooele County Commission go on record opposing the eastern and southern routes on the benches of the Tooele Valley. They will continue to work with this group, Rocky Mountain Power, and the BLM to find the route that will cause the least amount of problems to the citizens. Commissioner Clegg talked about growing up in Tooele. He will also oppose the southeast route because it has some of the choicest blessings of his childhood. He then seconded Commissioner Hurst's motion. All concurred.

10. **DESERET PEAK COMPLEX.** Mark McKendrick, Parks & Recreation, presented bids for furniture for the new conference center.

Midwest Commercial Interiors - State Bid - \$20,549.39
Utah Office Solutions - \$30,408.00

Commissioner Hurst moved to accept the bid from Midwest Commercial Interiors, which is on the state contract, for furniture in the conference center. Commissioner Clegg seconded the motion. All concurred.

Mark also presented a bid for equipment to maintain the new conference building from Waxie Sanitary Supply, which is also on the state contract. The bid was for a ride-on scrubber for \$14,127.48, a burnisher for \$6,787.46 and a rider attachment for \$752.56, for a total of \$21,667.50. Commissioner Hurst moved to accept the bid for maintenance equipment for the new conference center from Waxie Sanitary Supply for a total of \$21,667.50. Commissioner Clegg seconded the motion. All concurred.

11. **CONSULTANT SERVICES CONTRACT BETWEEN TOOELE COUNTY SHERIFF'S OFFICE AND DEEELL FIFIELD FOR ASSISTANCE WITH TOOELE COUNTY'S HOMELAND SECURITY EMERGENCY OPERATIONS PLANS.** Commissioner Hurst moved to approve the contract for Consultant Services between Tooele County Sheriff's Office and DeeEll Fifield for Assistance with Tooele County's Homeland Security Emergency Operations Plans. Commissioner Clegg seconded the motion. All concurred.

12. **RESOLUTION 2009-15 - PROPOSING THE ESTABLISHMENT OF THE PINE CANYON RECREATION SPECIAL SERVICE DISTRICT, TOOELE COUNTY.**

UTAH, CALLING A PUBLIC HEARING AND PROVIDING NOTICE THEREOF AND RELATED MATTERS.

Scott Broadhead, Deputy Attorney, stated that sufficient registered voters have signed the petition for the organization of a park in Pine Canyon. This is the first step in the procedure. A public hearing is set for August 25, 2009 for those who will want to come and speak for or against the park. Commissioner Hurst said he feels this is a good opportunity for the people of Pine Canyon. He moved to approve Resolution 2009-15 - Proposing the Establishment of the Pine Canyon Recreation Special Service District, Tooele County, Utah, Calling a Public Hearing and Providing Notice Thereof and Related Matters. Commissioner Clegg seconded the motion. All concurred.

13. **LEASE AGREEMENT WITH TOOELE CITY FOR TRAILHEAD (LOCATED AT DROUBAY ROAD AND VINE STREET).** Commissioner Hurst stated that this is right by the Tooele City Golf Course. There will be a kiosk showing hikers and bikers the way to go at Droubay and Vine. He moved to approve the Lease Agreement with Tooele City for a Trailhead Located at Droubay Road and Vine Street. Commissioner Clegg seconded the motion. All concurred.
14. **CONTRACT REVIEW.** A) 07-06-02 - Service Agreement - Tooele Hospital Corp, DBA Mountain West Worx - Occupational Health Services; B) 08-01-12 - Bailiff & Security Agreement - Tooele County Third District Court and Utah Administrative Office of the Courts will be reviewed in July, 2010.
15. **PUBLIC CONCERNS.** Joyce Hogan said she understands this power line is expected to be used for expected development. She was told that the line running through Tooele County was so big that in order for anyone to use it, there would have to be another substation built to bring the power down for something to be used. If that substation isn't built right along with the transmission line, it will be of no value to Tooele County.

Lee Brown, a consultant for Rocky Mountain Power, stated that the 500 KV that comes from Mona to Oquirrh is going to be constructed over the next few years. As they get the line built up here, it will be energized at 345 and they will try to get the power over to the Oquirrh substation which feeds Tooele County. This is necessary to get the power over there so the power can be stepped down and brought back. The group that was here earlier has been working with Rocky Mountain Power, looking at other alternatives, but it has to be done within the confines of the National Environmental Protection Agency. It will be a definite benefit. It is being placed there for the purpose of increased growth in Tooele City and the valley itself. The lines that are here are nearly at capacity. It's important to note that these transmission lines are super highways, no-one wants a super highway to go through their yard, but everyone wants to use them. The key is where do you put them that it isn't offensive to the people in that area. The company is very focused on what they can do to move that from the southeast corridor and make a proposal that is more acceptable to the citizens of Tooele.

Joyce asked if the substation is in the plan and when it would be built. Marty Leo, Rocky Mountain Power, stated that currently the plan is five years. But as load develops in the valley, that time-frame could change

James Vera, Grantsville resident, asked if there was a potential that some of these lines would go towards Grantsville. He asked if there was any thought given to this line going through Skull Valley. Marty stated that that area is outside of the study area. Lee stated that there are other problems with the test range, Dugway Proving Grounds, and things out there that would prohibit it.

16. **ADJOURN.** Commissioner Hurst moved to adjourn the meeting at 4:18 p.m. Commissioner Clegg seconded the motion. The meeting adjourned.

Approved July 28, 2009

July 21, 2009

Tooele County Commissioners,

We have just in the past weeks been informed of the preferred and the alternate routes that Rocky Mountain Power and the BLM are wanting to take to run the 500 kilovolt and the 345 kilovolt power lines through our county for the Mona to Oquirrh Transmission Line Corridor Project.

I am here today as a concerned citizen and as a chairperson to the citizens group formed to oppose the routes proposed by Rocky Mountain Power and the BLM for this project.

The proposed routes are in unacceptable and far too damaging to our county and its residents.

As you have also discovered, these routes pass over the mouths of both of our most used and cherished canyons. They will cross over our reservoir and across the foothills of our community. They are also proposed to run on the west side of our city for too close to the residents living there thus causing an extreme negative impact on the future residential growth in that area.

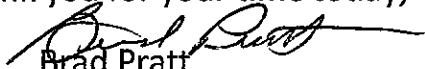
The plan proposed by RMP and the BLM have at this point not taken into consideration at all the welfare of Tooele City and in many ways Tooele County.

We have industrial areas and an extreme amount of open unimproved land that would be a far better choice for the power lines to be located. There is not an acceptable reason to destroy the beauty and the possibility of future residential growth in our community. In a way this would strangle us.

As a chairman of the citizen committee I have here a petition with approximately 3000 signatures of concerned citizens of Tooele opposing the current routes proposed for this project. I would like to present this petition to The Tooele County Commissioners at this time. There are still petitions out in the community at this time being signed. I am informed that at this time those petitions contain another approximately 1000 signatures. We will continue to have opposing petitions signed through the month of July and then present a complete petition to you at that time. The members of the citizen group and those signing this petition are growing at a very rapid rate. (copy of petition given to The Tooele County Commissioners)

We expect you as our elected officials in our County to engage this matter with the same conviction and concern as our Tooele City officials have and as our concerned citizens have. As a citizen group we plan to continue to stand up and not allow the proposal currently in place. We need to stand together as a county, community and its leaders to protect what is sentimental and sacred to the residents of our community. There is an agreeable solution if we all can set down with Rocky Mountain Power and the BLM and find one.

Thank you for your time today,


Brad Pratt

To whom it may concern,

The pictures included in this packet came from Tooele High School yearbooks and photos taken by Tooele High School students when their class either worked on or whitewashed the large "T" on the foothills east of Tooele.

These photos are just a small number of pictures that grace the pages of numerous yearbooks and photo albums of the alumni of Tooele High School. They are the memories we all have of the historic "T" and the times countless students and faculty have spent working on the "T" throughout the history of our school.

The pictures included here range from 1916, covering seven different decades up to the 1980's. These pictures and the history of the "T" show the importance of the east foothills in Tooele Valley to the residents of Tooele, as well as the thousands of Tooele High alumni all over the country, as well as various parts of the world.

To mar the east foothills with unsightly power lines and large metal towers will not only distract from the continuous beauty of those mountains, but interfere with the beauty and memories so many of us have of the historic "T".

Richard C. Valdez, CAA
THS Class of 1971
Teacher, Counselor, Coach, Athletic Director
(Tooele High School - 1977 to present)



916

STUDENT BODY OFFICERS

"OUR EXECUTIVE COMMITTEE."

The year 1915-'16 began with a new, yet live corps of student body officers. John Adams as president, with Paul Mahoney, vice-president, Gerola Gowans, secretary and treasurer; Edith Tate, cheer master; and Howard Elkington, athletic manager, have proved themselves worthy of our highest praise.

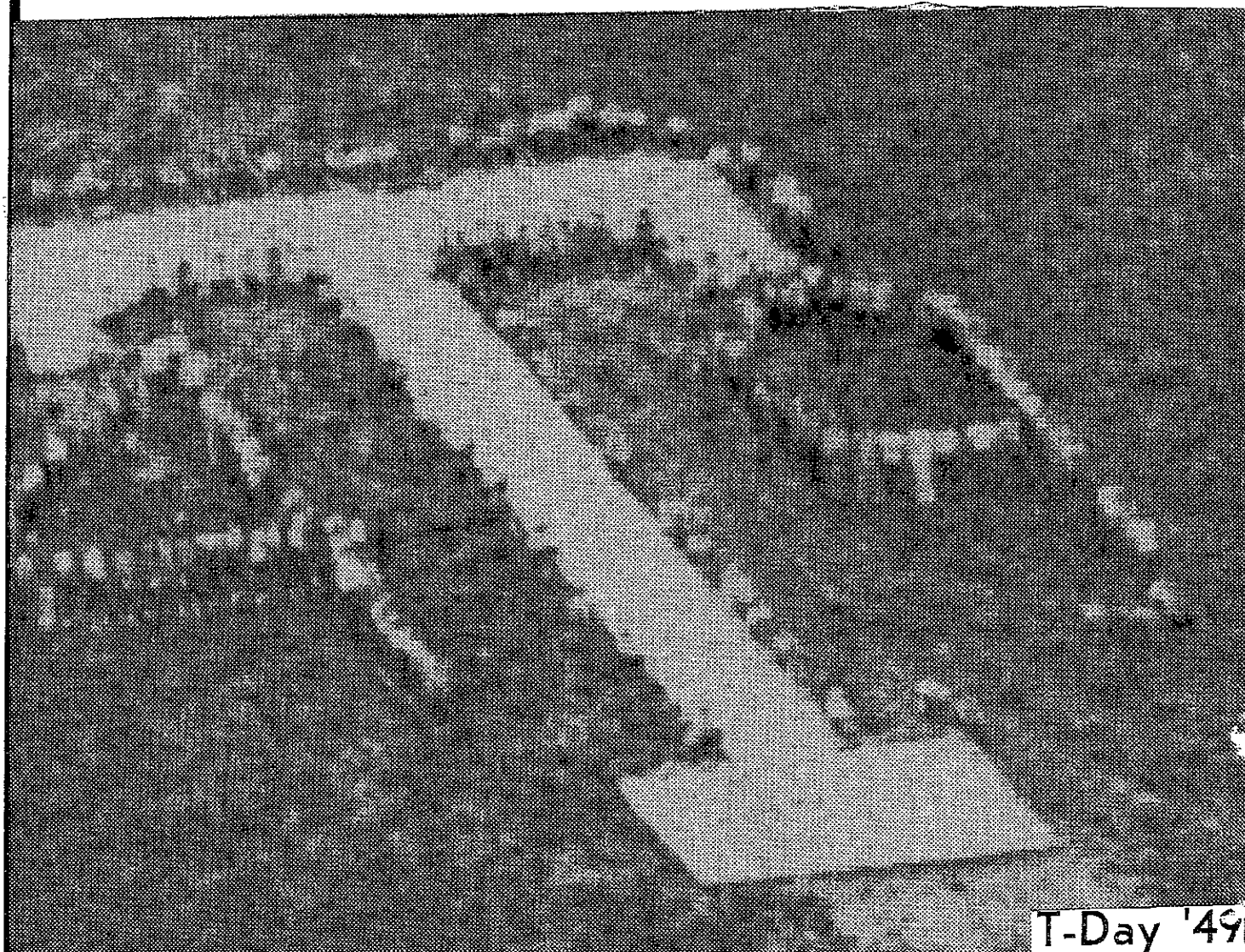
Never before has school activities reached such a high standard and never before were students as loyal as they have been this year.

It is with regret we bid our old officers farewell, but let us at least feel grateful for a most successful school year and remember always that to them we owe a debt we can never repay in as much as they are responsible for a united student body, loyal at any cost.

At the election held April 11, 1916, class feeling ran high. Each felt that they must win. It was a joyous gathering when each class was represented, and the student body for each office was elected. The final ballot proved in favor of Howard Tate, president, Emma Hanks, vice-president; Nellie Shields, secretary; Violet Heggie, treasurer; Lucille Gowans, cheer-master; and Vern Vowles, athletic manager.

Our great undertaking, that of building a block T on a mountain east of Tooele, has been accomplished, and our next move is to again whitewash it. This will take place May 5th.

Let us wish our new officers a successful reign with our loyal support and a faithful for the continual progress of our Alma Mater.

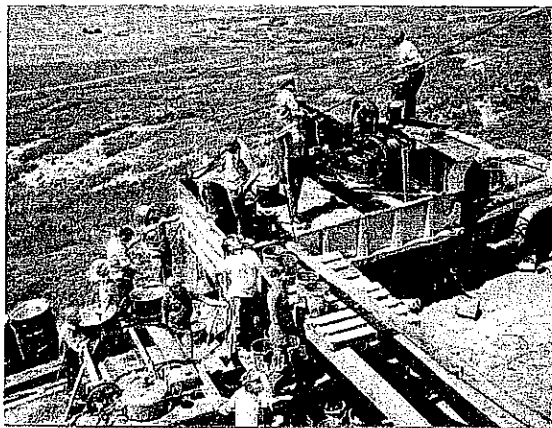


T-Day '49

"Doo E L E
1946



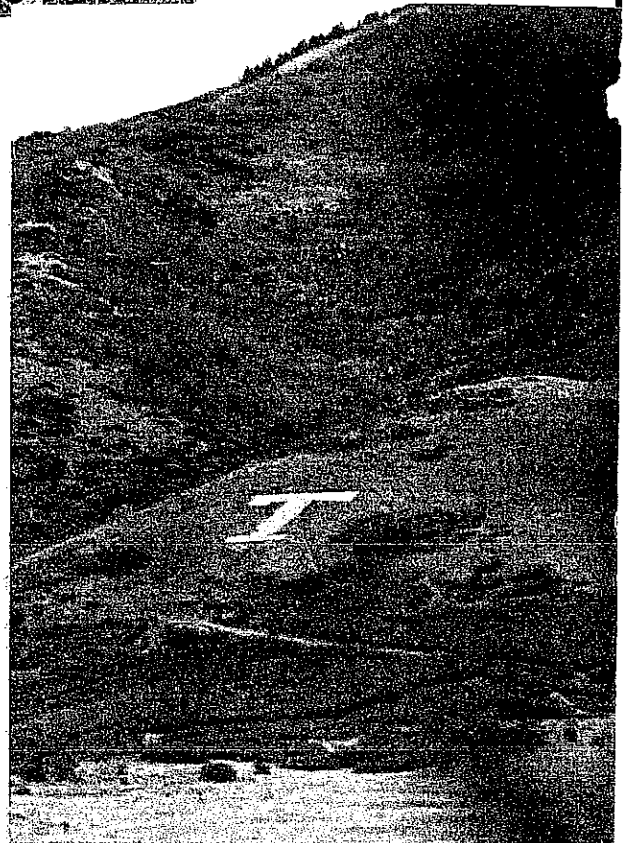
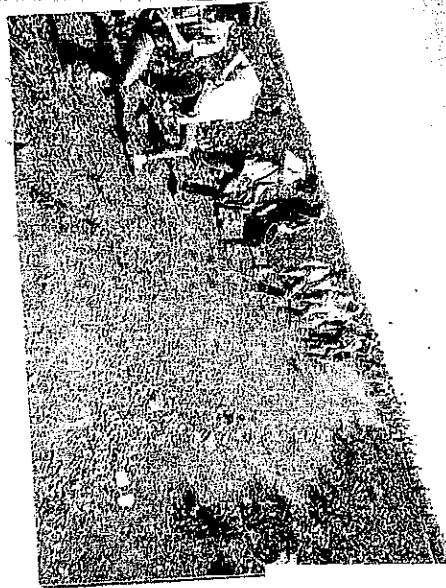
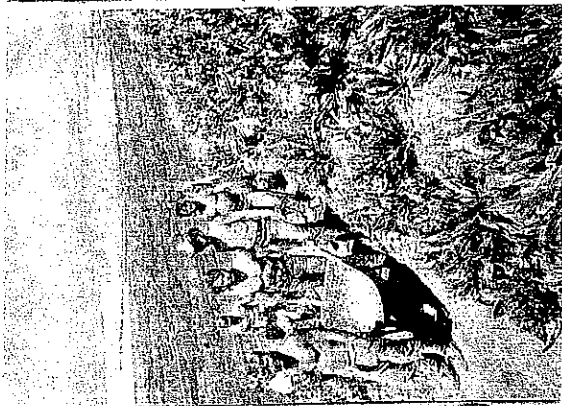
"T' Day



← 1969
"T" project →

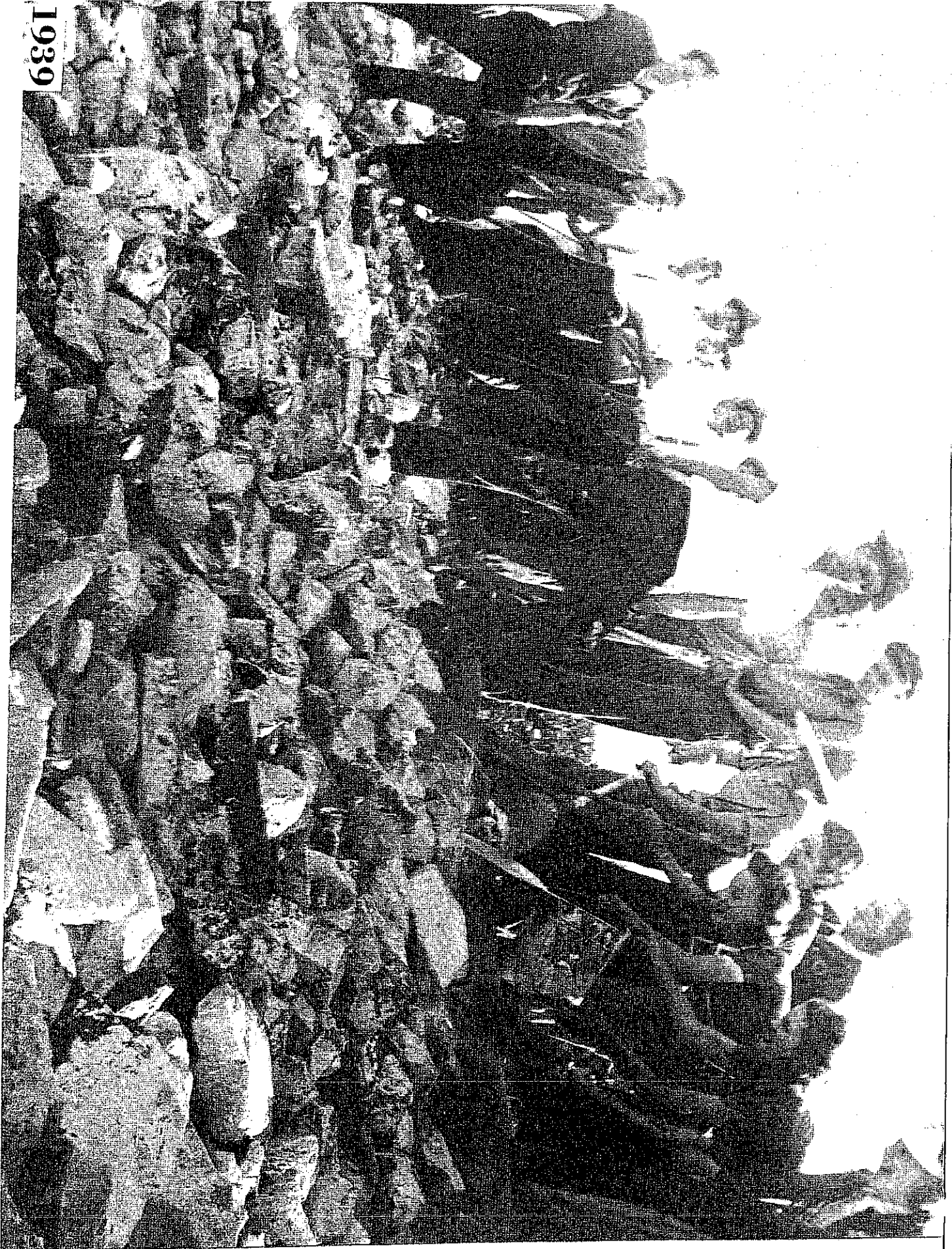


1984



1969
"T" project
put the "T"
in as a
large cement
T

1939



Tooele Torches Glow in Memory of 2 Students

Special to The Tribune
TOOELE—The skies above Tooele reflected a warm glow Tuesday night as two huge, torch-lit memorials burned brightly on the mountains east of Tooele in honor of two dead Tooele High School students.
 The students, Ray-Louis Simon and Robert Lynn "Guy" Garcia, both 17

and seniors at Tooele High, were killed in a one-car rollover near Mills Junction on U.S. 40 early New Year's day. Both were members of the school football team.
 Early Monday scores of students from Tooele High gathered on the mountainside near the large "T" on the Oguth range to erect the memorials. Working in subfreezing temperatures, they painstakingly spelled out the words "Guy," and "Ray" on either side of the large "T." Then, at 8 p.m., the monument was lighted. Residents reported the light from the flames glowing throughout Tooele Valley. "The kids missed their friends," one Tooele president said. "They wanted to do something in their memory."

1972



1929

July 21, 2009

RE: Rocky Mountain Power - Mona to Oquirrh Transmission Corridor Project

TO: Tooele County Commissioners: Colleen Johnson, Jerry Hurst, Bruce Clegg

Quote the Tooele County General Plan 2006 EIS page 3-60.....

Why does this "special protection" only pertain to Miller Motor Sports Park and The Deseret Peak Complex. The EIS only took a portion of the County's Plan. Is there more in your plan that protects our Mountains, Middle Canyon?

We are trusting this must be an error in the EIS and that you are not apathetic to our interests and needs. Because the Protection Granted under the County's General Plan has protected MMSP and DP from any route passing close to them. We would like to have the entire plan included in the EIS to get the same privileges and protection to the mountains and residents.

If not, we will be asking why weren't these beautiful mountains – the highly sensitive view areas of Tooele and the recreation lands of Tooele not protected and given the same consideration as these two projects were given? They are man-made structures and can be rebuilt and reconstructed at any given time or location..... but God created the mountains and they cannot be replaced or reconstructed by man. We are keeper of God's creations, you as our elected officials are the public's keeper -

As Tooele County officials you were elected by the citizens and are paid to keep a careful watch over us. It is your obligation to listen to us and then speak for the majority to keep our interests protected and safe. You need to keep you eyes wide open, looking out for wolves in sheeps clothing -

salesmen who enter our valley with a sales line to take what they want and even convince you to write rules that protect them and their private business interests first – over and above our interests.

The citizens of Willard and North Ogden were not so lucky. Their elected city and county officials were persuaded by RMP to sign a construction permit prematurely. When citizens woke up one morning to see the unwanted devastation RMP's construction to their views and residences, they didn't have any legal means to stop RMP or request the routes be moved. We are very grateful our City and County Officials were wide awake on our watch and had the forethought to not be talked into signing any premature agreements with RMP. Because of your protection, the citizens of Tooele are very lucky and grateful we have this opportunity to oppose RMP's destructive plans for Tooele.

Pete Grimm told me a story about a Camel and his master, The camel kept putting his nose in the his master's tent in order to be able to breathe during the sand storm. He eventually forced his "master" out of his tent entirely. The camel, the servant, became the Master. RMP should be our camel – our servant. But like any powerful servant, we need to keep it in it's place. If we let it put it's nose in our tent, it can easily take over our whole tent and force us out into an "ugly" sandstorm. Roles can be reversed - the world can be turned upside down. We need to give our camel appropriate care, but we need to keep our camel in it's place. We can and do enjoy the benefits of electric power while taking appropriate care for the needs of RMP – BUT we do Not and should Not let RMP force it's ugly power corridors into our beautiful city.

RMP is our paid servant. We pay our electric bills and they in turn supply us power. Anytime we need more power they are obligated to bring it to us – but remember we are paying for the process. According to the Federal

Register, in the third qtr of 2008 RMP applied for a 3.6% consumer rate increase. The rate hike was approved by the Utilities Commission. Then again in the first quarter of 2009 RMP applied for another consumer rate increase of 4.7%. That's an 8.3% increase in our power bill in less than a year!! So yes, the Master has a very well paid Power camel servant. For this reason, the Master should say where the power corridor is placed in his tent, since the Master is paying the bill.

Under the Federal Register we - citizens of Tooele County – are legally granted a 90 day open comment period. The Federal Register was filed by the Bureau of Land Management on May 15, 2009 is taking our right to voice our opinion for a short 90 days. to let you, our political, elected officials know and RMP know we don't want the power corridors where RMP has proposed to place their huge ugly power lines. We don't want them where we live . We do not want them close to residential areas or ruining our views and our future growth.

So far we have been heard by Tooele City. Mayor Pat Dunlavy and the Tooele City Council recently voted unanimously to oppose RMP's proposed routes anywhere in Tooele City. They are in complete agreement with the citizens. The BLM has listened to us and because we the citizen's have made a difference so far, RMP has listened and is agreed to look at other options. They won't come up with the options as they like their own, but they have listened to three alternative routes we have presented to them that do not go over, through or above residential areas in the Tooele Valley. This is because of the signatures on the Petitions so many have signed, nearly 4000 residents have signed so far. Our voices are being heard, but there is still no guarantee RMP will move their proposed routes....As a public utility RMP can take immanent domain of our property and have it condemned. We cannot allow this to happen.

Part of the Federal Register is the Environmental Impact Study. We, as a committee after reading and studying it, have discovered during the 90 day comment period missing or incomplete documents. Information not included may have lead to a biased report. If all the missing and incomplete information is presented and included in the Final Environmental Impact Study, many of RMP proposed routes will be eliminated.

1. As mentioned only part of the TC General Plan 2006 is included in the Draft EIS. The entire County Plan should be included.
2. Tooele City has a master plan that was not included and the EIS even says that one doesn't exist. Tooele City has a plan for the city and it's future growth. It doesn't include ugly 200 ft power lines as a fence across the gateway to the valley. The mountains are a
3. Two natural springs are not mentioned. One of these springs is the only water source for wildlife on Corner Mountain. The other spring is located in Left Hand Fork and is "the Water" source that supplies Tooele City with it's culinary water.
That's a pretty big miss.
4. Tooele City has 105 acres they have identified as open space located on the south east bench under a Federal Grant.

The EIS has used outdated photos and maps which painted an unrealistic visual picture of Tooele City and the Tooele Valley. There isn't a picture of the East Benches and the homes and residents that are there. The BLM was shocked at the pictures I took to the June 23rd meeting they held showing children on trampolines and the picturesque – yes breathtaking views that would be destroyed. The BLM doesn't want them there now they have seen what's here. They were not aware the corridors were running anywhere near where people lived or what they would be ruining. The RMP project manager had not even set foot in Tooele until the morning of June 23rd either. You cannot appreciate what's here unless you see it or have the knowledge of it's

presence in accurate, current, and detailed information. The Environmental Study is flawed and needs to be corrected.

God only put a few green areas with mountains in Tooele City. Why would we allow these power corridors to be put there ? Of all the other places in Tooele County to choose from! Do you think power corridors of this magnitude running city or a county is going to attract people to live here or interest businesses to locate here if they are greeted with a power corridor fence running across SR 36 or wrapping around our edge of our spectacular scenic mountain views and prime real estate areas? Of course not. Does the executives of RMP live under 500 or 345kv corridors? This brings me to another point. Once RMP is given a Right of Way, they can add lines and increase voltage "if and when needed" per the Federal Register. So once they are here they are a permanent fixture that can grow bigger and uglier forever.

~~Put the corridors where God didn't put any beauty in Tooele County.~~ His pre-designed plan is as clear as day where he wanted them to go. This is a travesty and an injustice. You don't see them on the East side or Salt Lake or where Kennecott is opposing them in the South West. Salt Lake's elected officials have a plan they enforce that keeps industrial lines in industrial areas where people don't live. They do not allow them in residential areas.

We need you to be united with Tooele. "The Master" , so to speak, and stand with us the people, the City and the State to keep our camel, RMP in it's place.

Sincerely,

Kaye Pratt

A handwritten signature in cursive script that reads "Kaye Pratt". The signature is written in dark ink and is positioned to the right of the printed name "Kaye Pratt".

743 Deer Hollow Rd

Tooele Utah