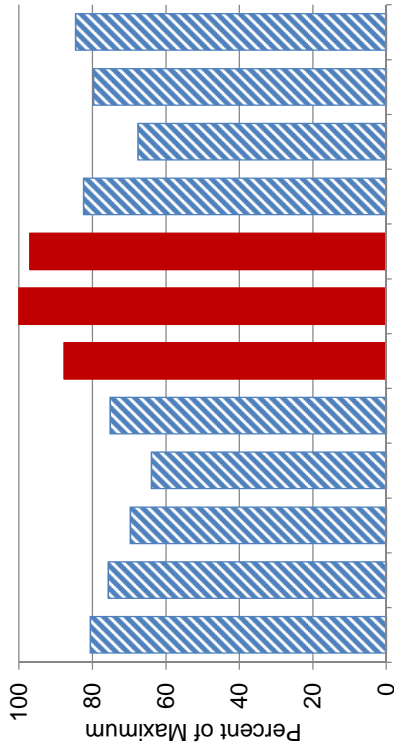
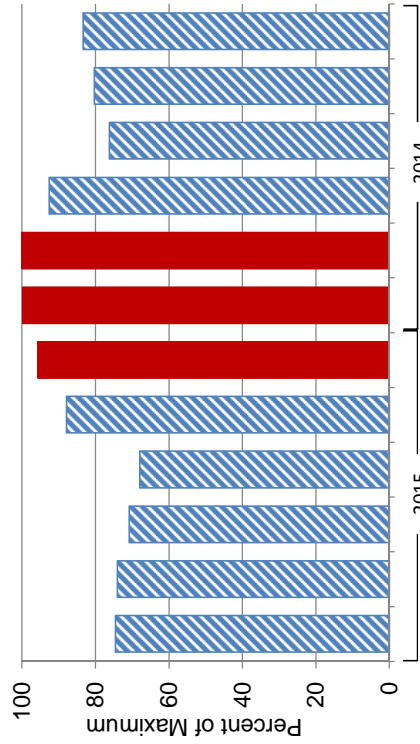


Utah Jurisdiction Monthly Load Shape

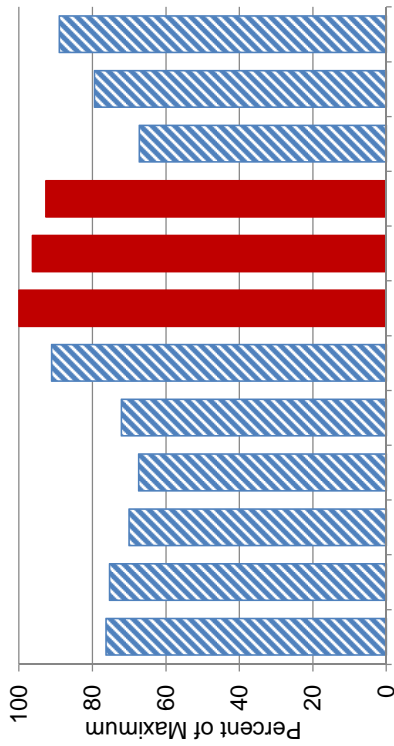


2008

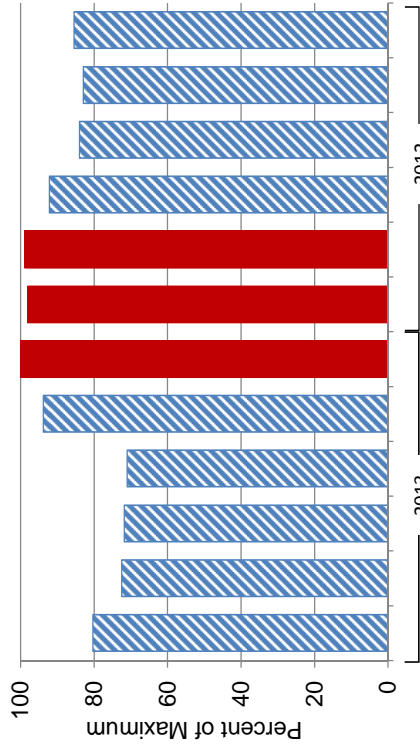


Forecast Period July 2014 through June 2015

PEAK MONTHS



1998



Base Year 12 Months Ended June 2013

Sources:
 1998: JAM Dec 1998 - Utah Rate Case.xls, "Factors" sheet
 YE Dec 2008: UT 09-035-23, Attachment UIEC 4.1 -1, Page 2 of 6
 YE Jun 2013: UT 13-035-184, Response to UIEC 7.1
 Exhibit RMP__(SRM-3), Page 11.15, Docket 13-035-184