

The NPAR1WAY Procedure

**Kolmogorov-Smirnov Test for Variable LF
Classified by Variable Class**

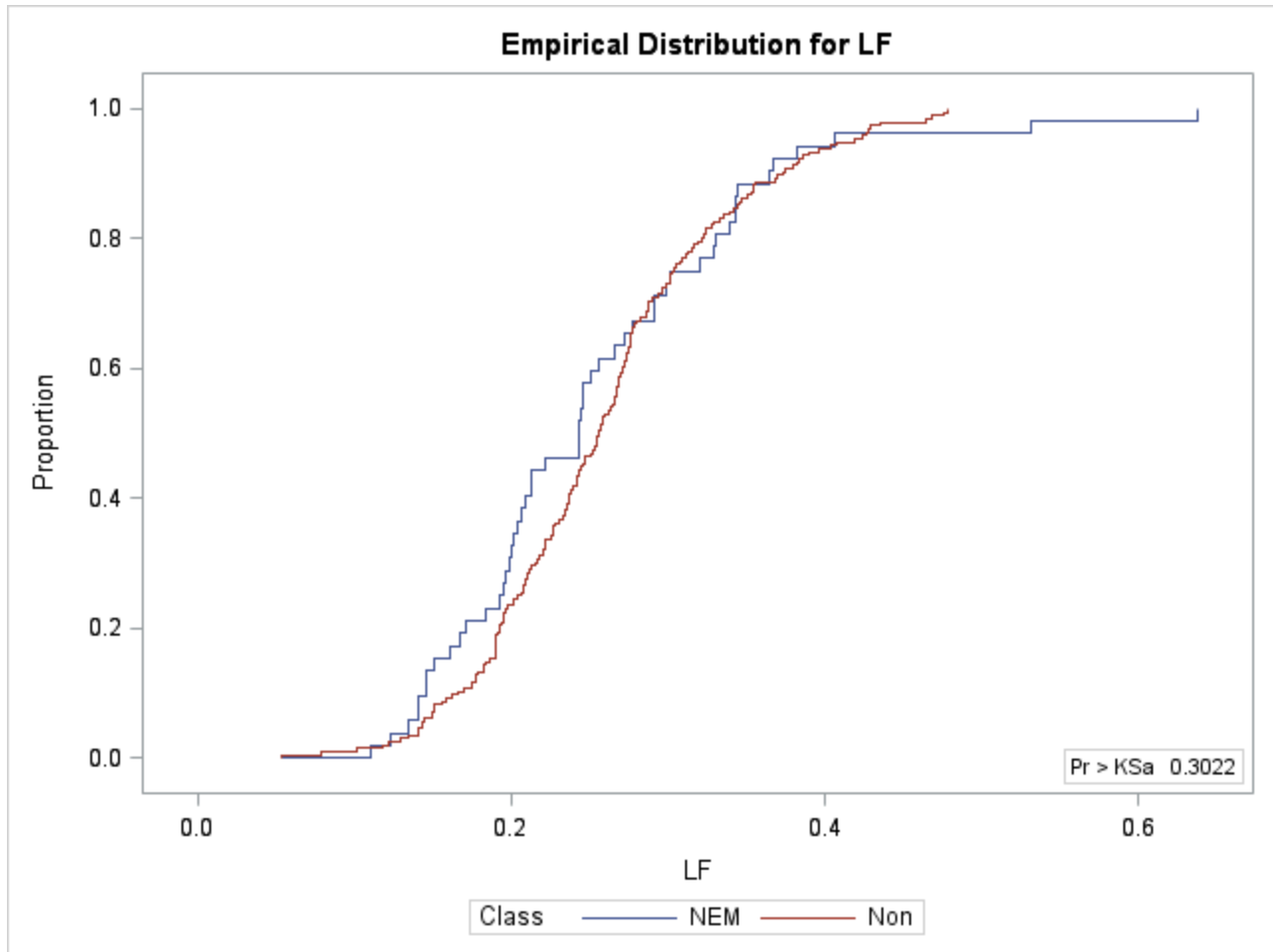
Class	N	EDF at Maximum	Deviation from Mean at Maximum
NEM	52	0.442308	0.863364
Non	196	0.290816	-0.444700
Total	248	0.322581	

Maximum Deviation Occurred at Observation 23

Value of LF at Maximum = 0.212913

**Kolmogorov-Smirnov Two-Sample Test
(Asymptotic)**

KS	0.061669	D	0.151491
KSa	0.971162	Pr > KSa	0.3022



**Cramer-von Mises Test for Variable LF
Classified by Variable Class**

Class	N	Summed Deviation from Mean
NEM	52	0.151788
Non	196	0.040270

**Cramer-von Mises Statistics
(Asymptotic)**

CM 0.000774 CMa 0.192058

**Kuiper Test for Variable LF
Classified by Variable Class**

Class	N	Deviation from Mean
-------	---	------------------------

**Kuiper Test for Variable LF
Classified by Variable Class**

Class	N	Deviation from Mean
NEM	52	0.151491
Non	196	0.057300

Kuiper Two-Sample Test (Asymptotic)

K 0.208791 **Ka** 1.338493 **Pr > Ka** 0.3427