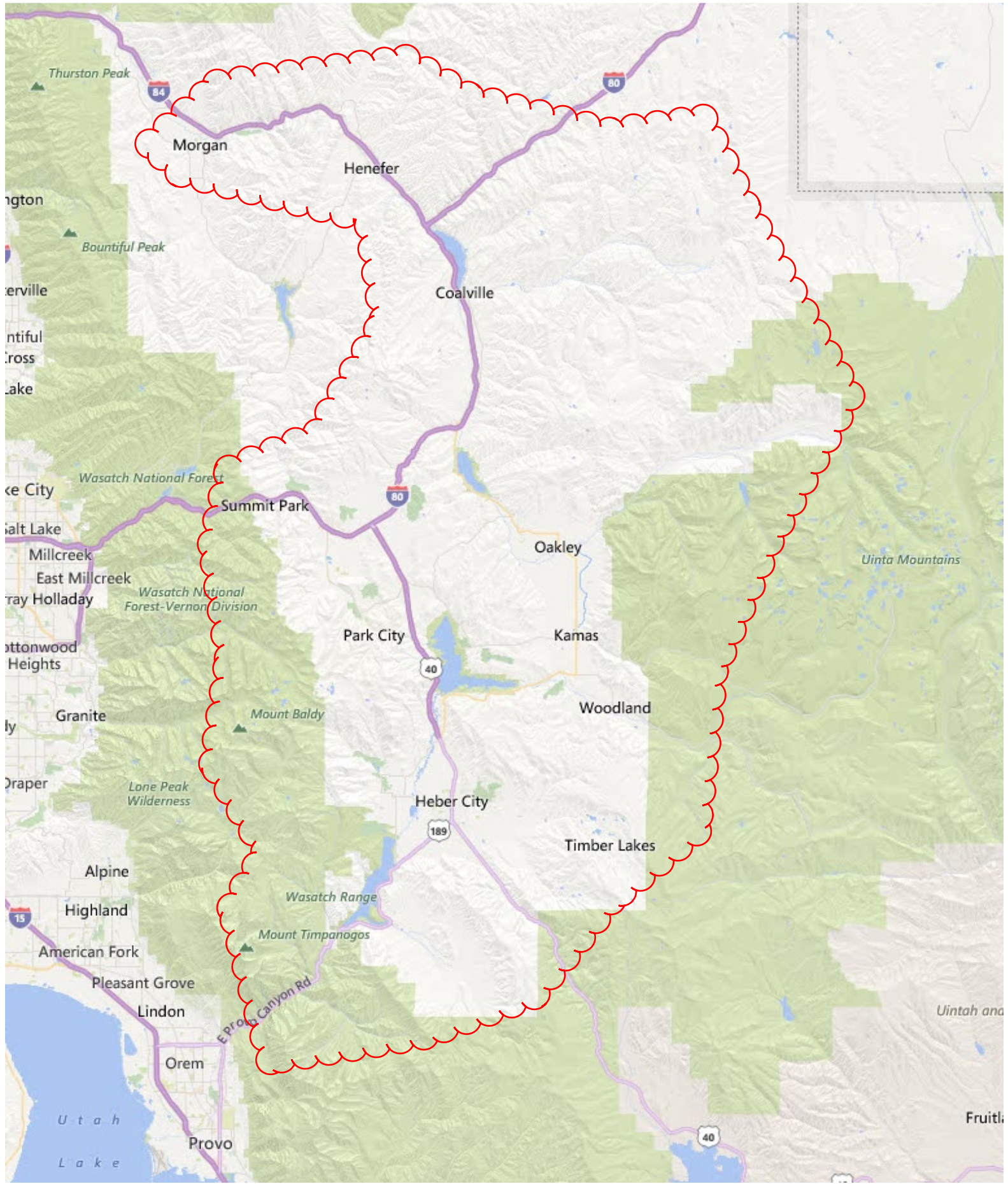
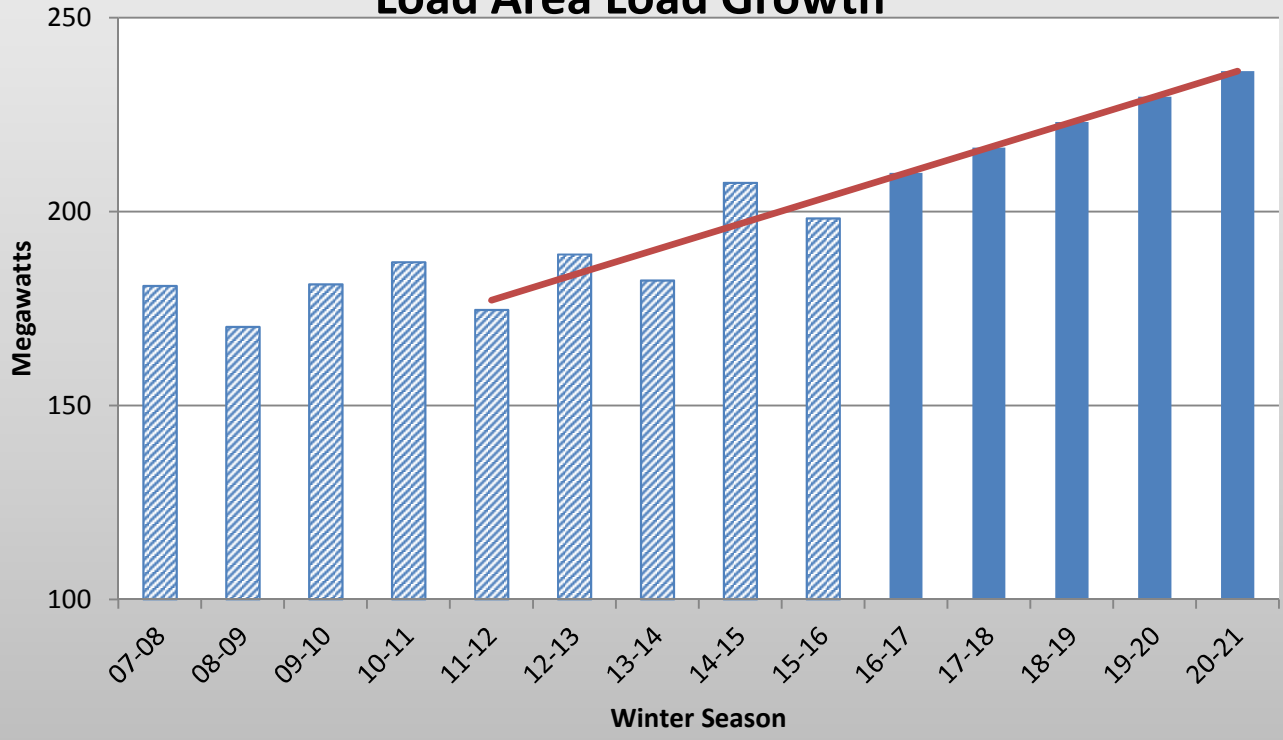


# KMS-1 Load Area

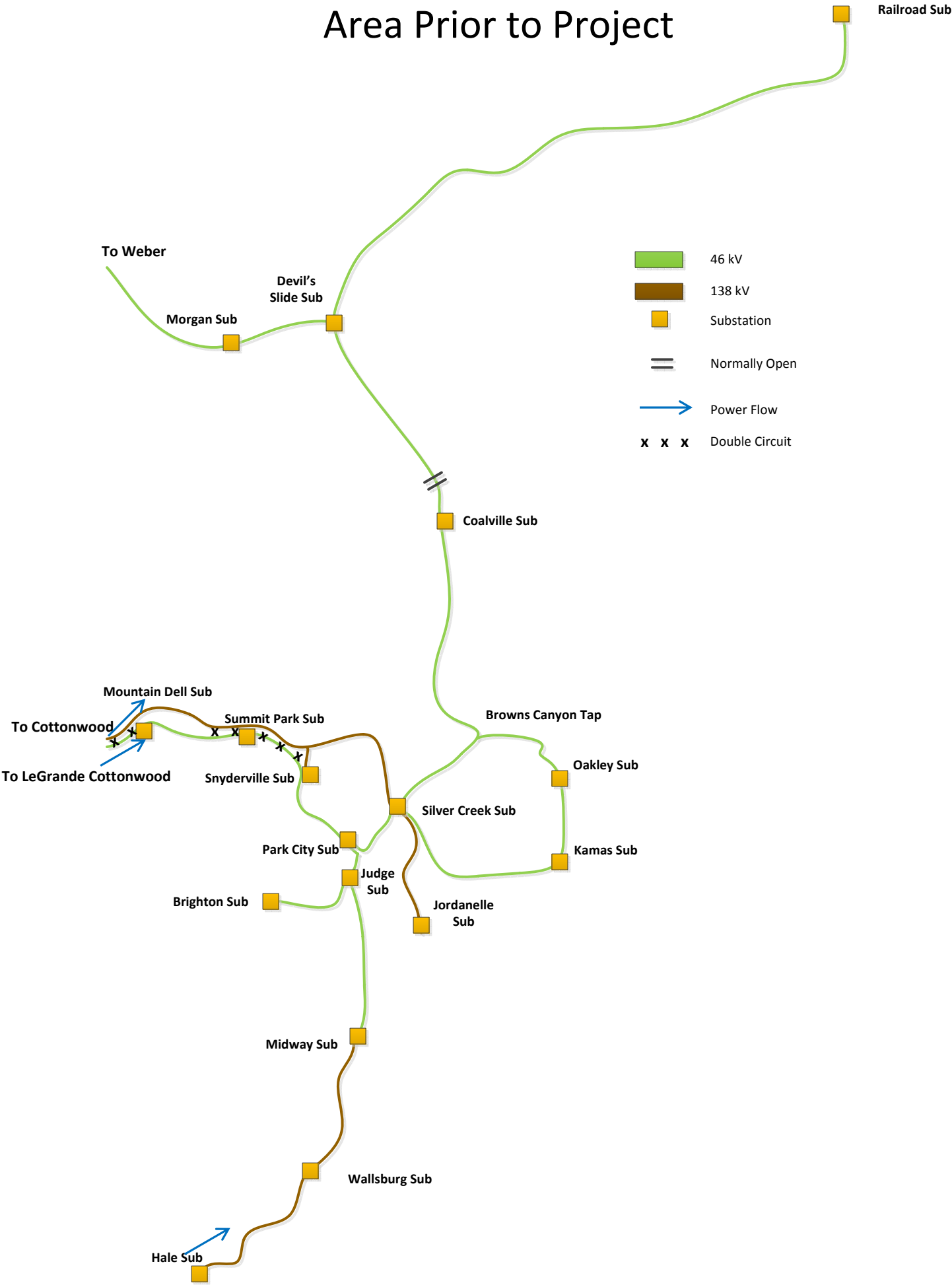


# KMS-2 Load Area Load Growth

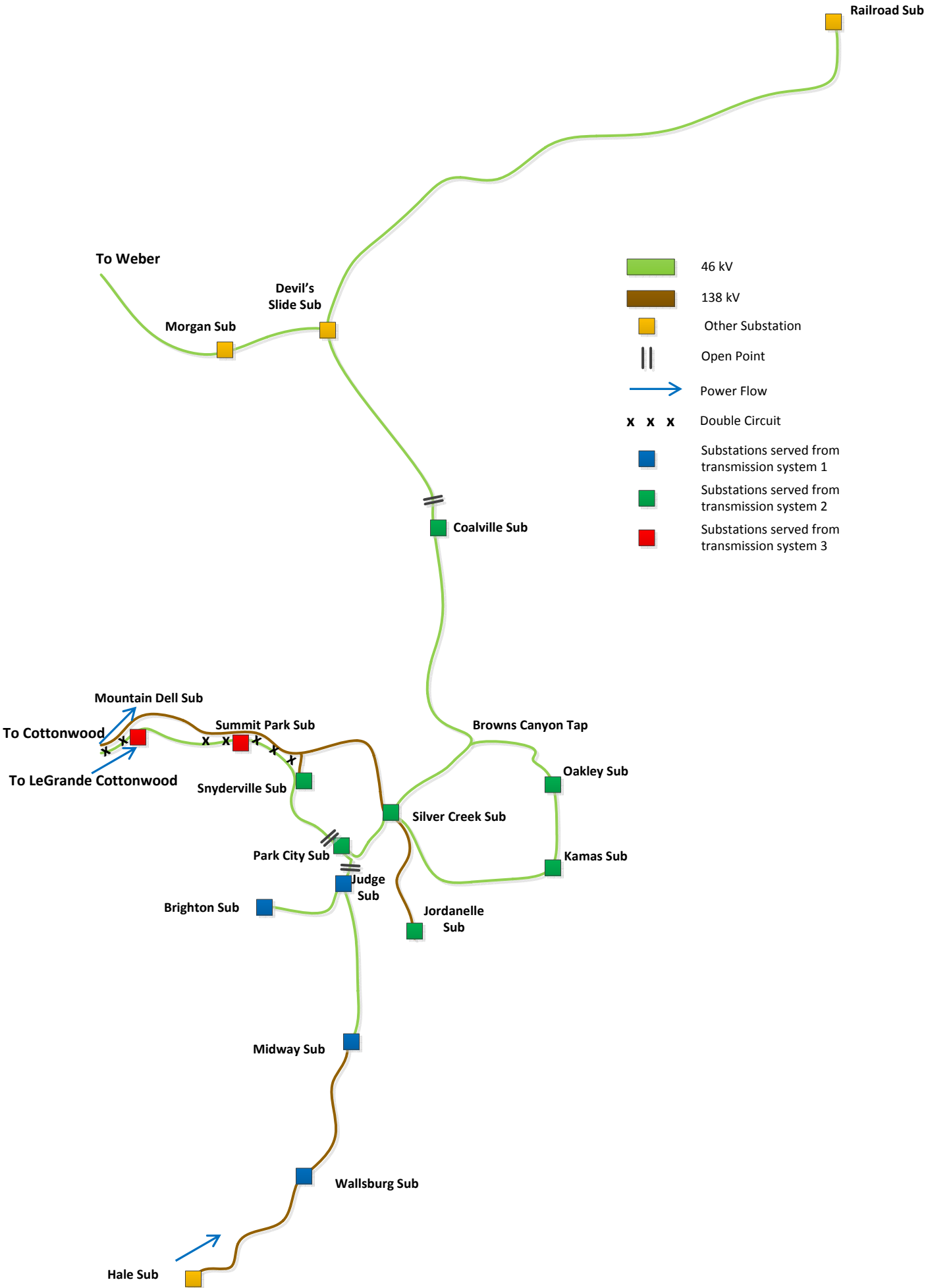


# KMS-3

## Transmission Lines Serving Load Area Prior to Project



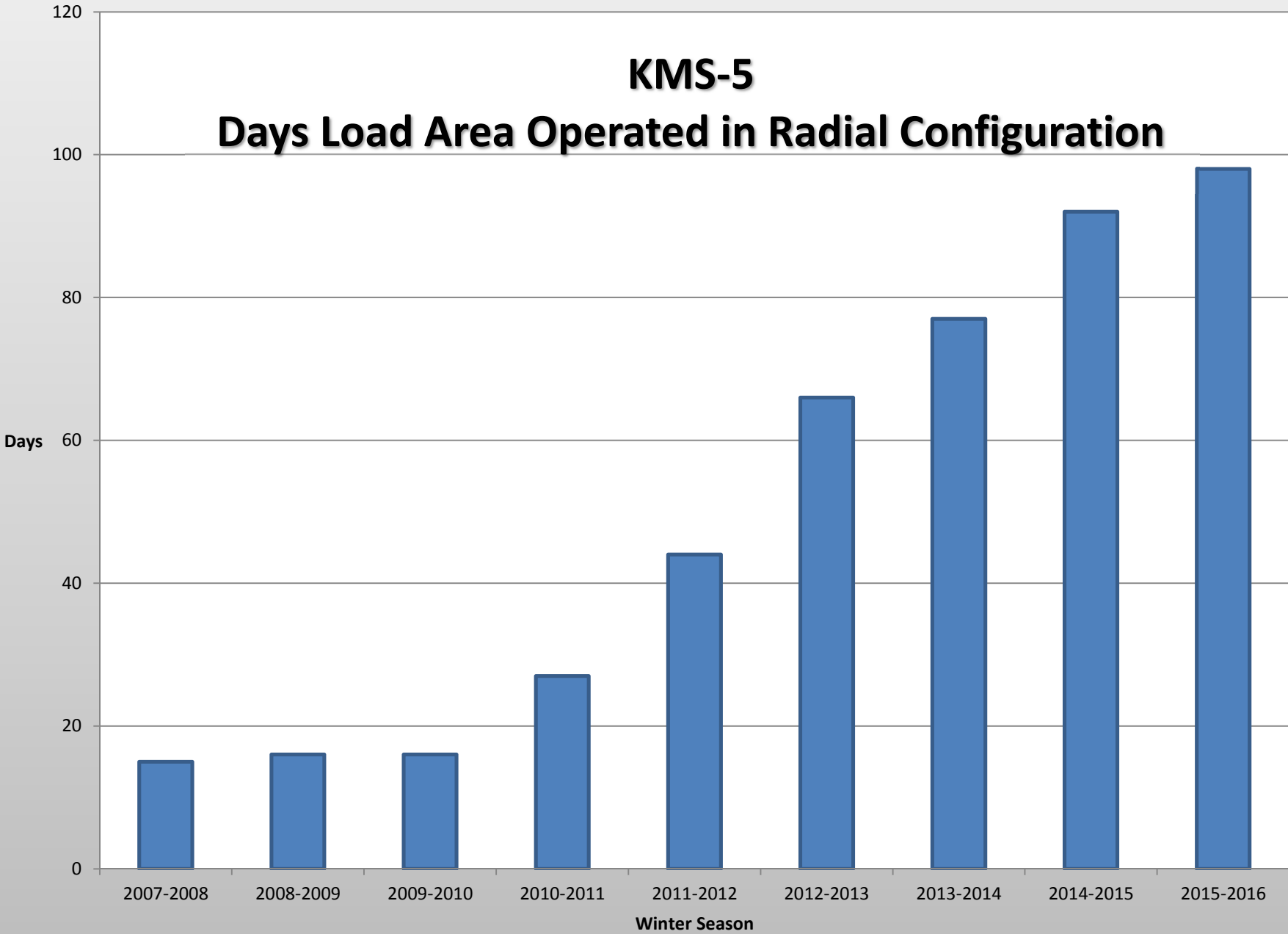
# KMS-4 Radial Transmission Operation



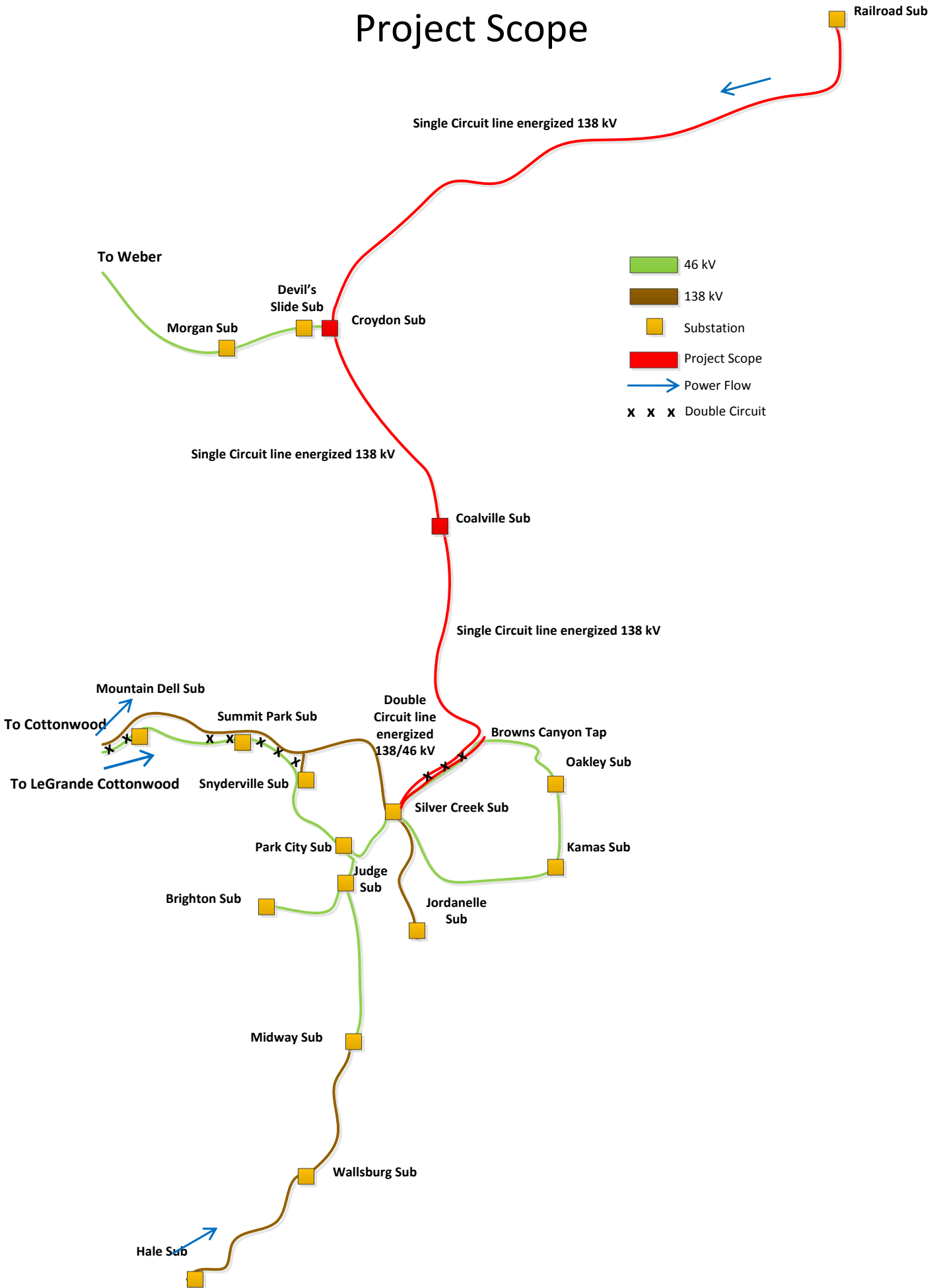
- 46 kV
- 138 kV
- Other Substation
- Open Point
- Power Flow
- x x x** Double Circuit
- Substations served from transmission system 1
- Substations served from transmission system 2
- Substations served from transmission system 3

# KMS-5

## Days Load Area Operated in Radial Configuration

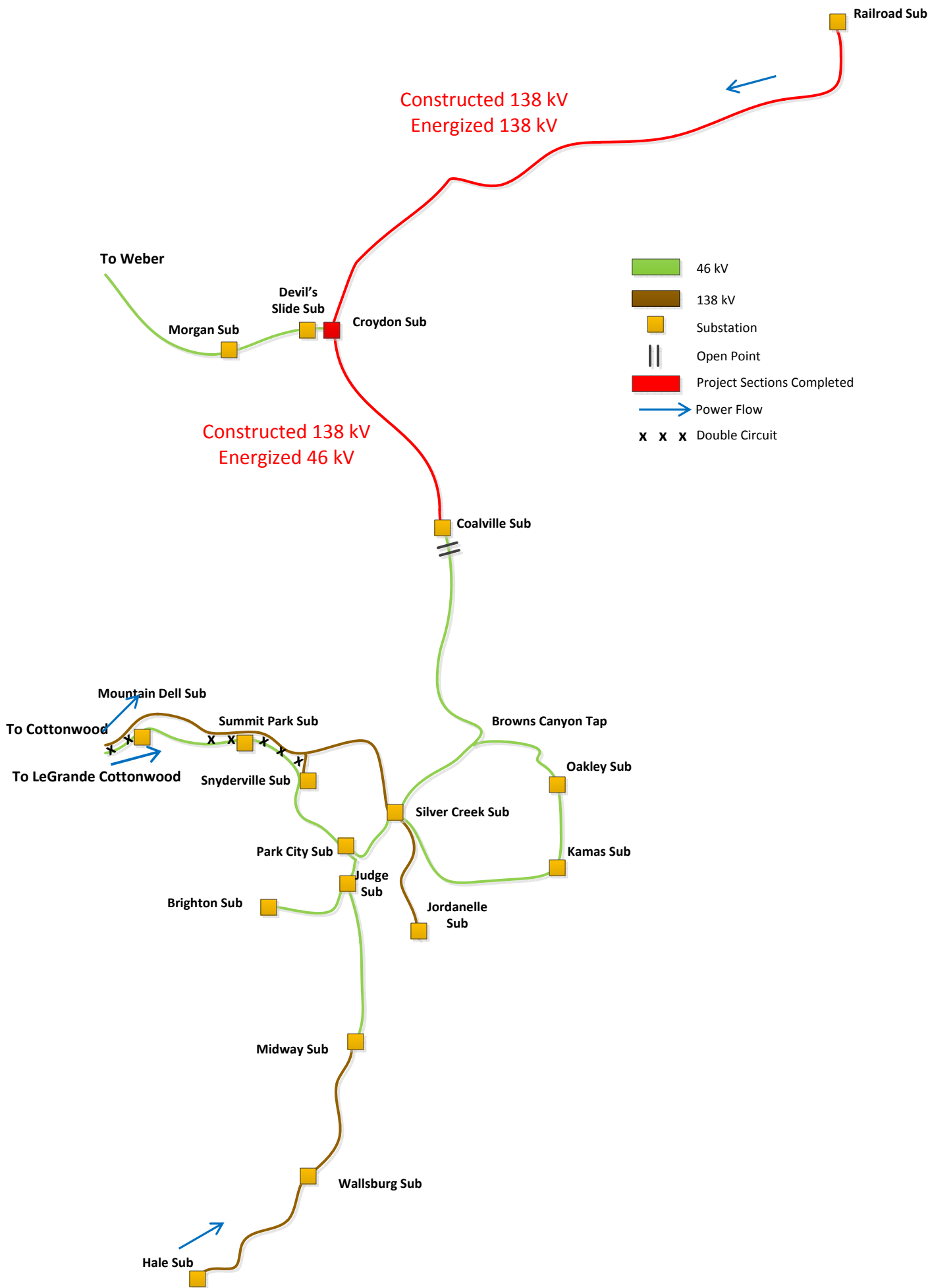


# KMS-6 Project Scope



# KMS-7

## Current Load Area Transmission Configuration



# KMS-8

## Future Planned Projects in the Load Area

