

| | | | | | |
|-----------|-------------|----|----------|-----|--------|
| A | PRELIMINARY | RF | 02/07/18 | LB | Title: |
| No. | DESCRIPTION | BY | DATE | APP | |
| REVISIONS | | | | | |

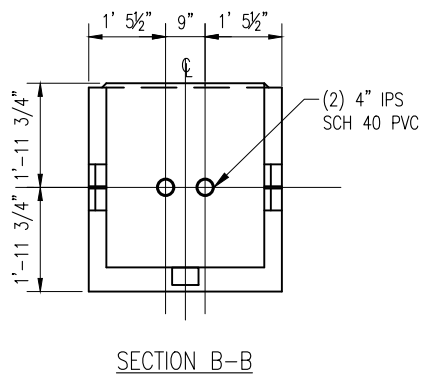
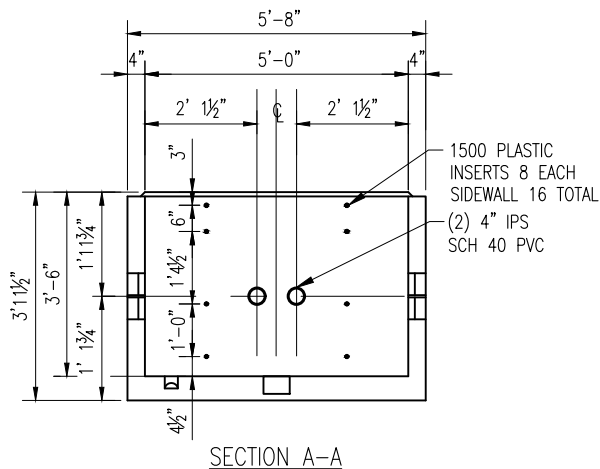
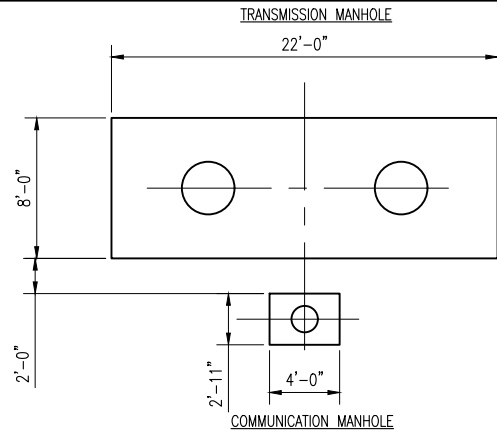
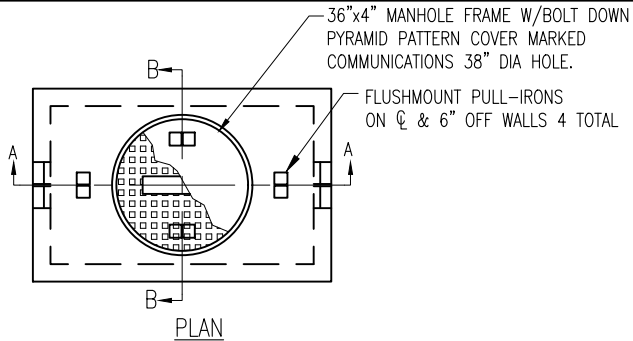
HEBER LIGHT AND POWER COMMUNICATIONS 4" CONDUIT LAYOUT

CONFIDENTIAL

THE DRAWINGS, DESIGNS, IDEAS, ARRANGEMENTS AND PLANS INDICATED OR REPRESENTED ARE THE SOLE PROPERTY OF INTERMOUNTAIN CONSUMER PROFESSIONAL ENGINEERS, INC. (ICPE), AND ARE SUBJECT TO THE COPYRIGHT OF ICPE OR ITS ASSIGNS. THEY WERE CREATED, EVOLVED AND DEVELOPED EXCLUSIVELY FOR USE ON, AND IN CONJUNCTION WITH, THE SPECIFIED PROJECT. ANY USE OF THE DRAWINGS, DESIGNS, MATERIAL OR INFORMATION CONTAINED HEREIN, INCLUDING COPYING, WHICH IS NOT EXPRESSLY AUTHORIZED BY ICPE, IS STRICTLY PROHIBITED AS AN INFRINGEMENT OF ITS COPYRIGHT AND MAY RESULT IN LIABILITY.

| | | | | | |
|-----------|---------|---------------|-------|----|---------------|
| Dwn. | RF | Date 02/07/18 | Engr. | LB | Date 02/07/18 |
| Chk. | LB | Date 02/07/18 | App. | LB | Date 02/07/18 |
| Proj. No. | 034-031 | Scale | NONE | | |

| | |
|-------------|----------|
| Drawing No. | Rev. |
| E03A | A |



| | | | | | |
|-----------|-------------|----|----------|-----|--|
| A | PRELIMINARY | RF | 02/07/18 | LB | |
| No. | DESCRIPTION | BY | DATE | APP | |
| REVISIONS | | | | | |

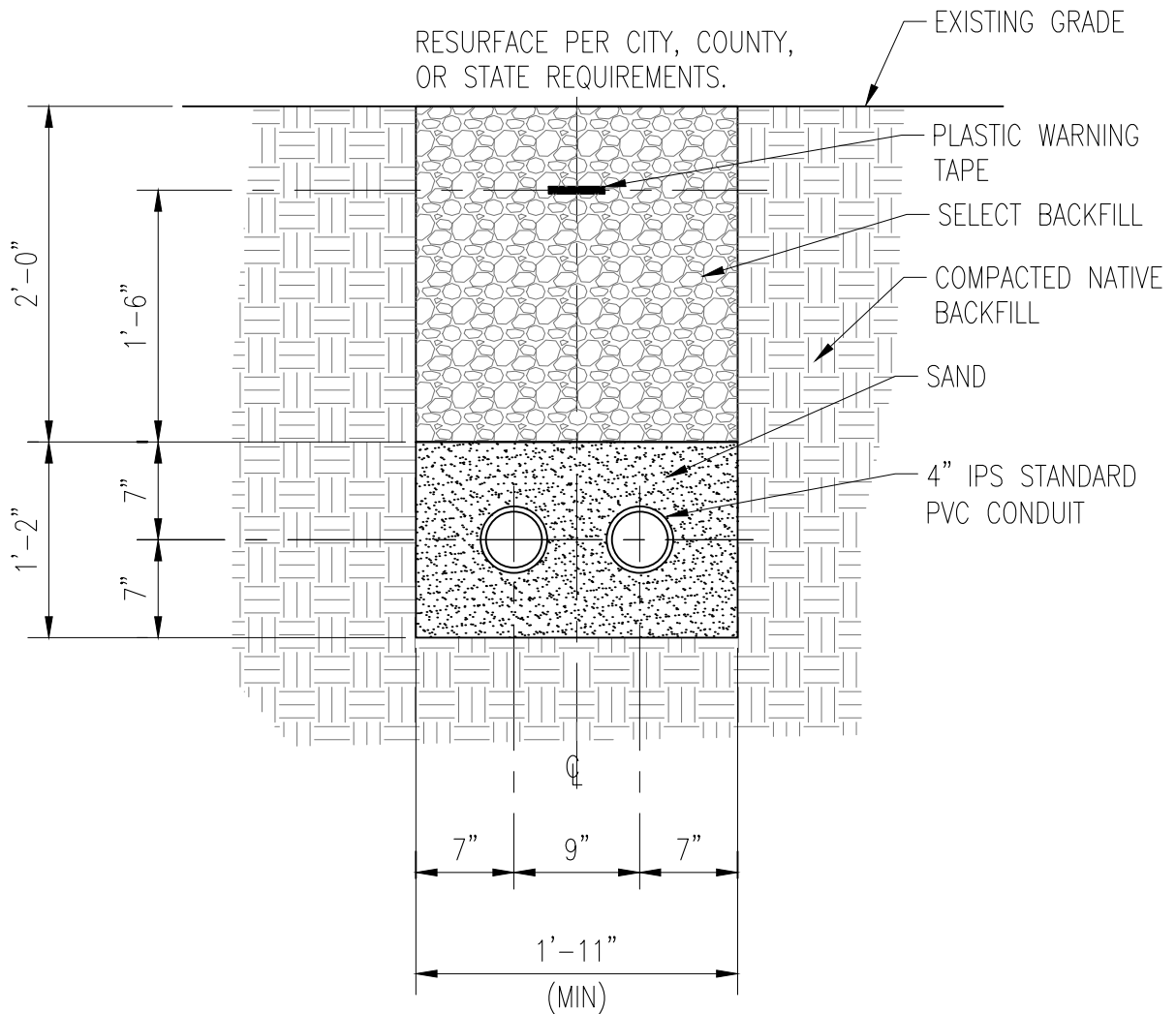
CONFIDENTIAL

THE DRAWINGS, DESIGNS, IDEAS, ARRANGEMENTS AND PLANS INDICATED OR REPRESENTED ARE THE SOLE PROPERTY OF INTERMOUNTAIN CONSUMER PROFESSIONAL ENGINEERS, INC. (ICPE), AND ARE SUBJECT TO THE COPYRIGHT OF ICPE OR ITS ASSIGNS. THEY WERE CREATED, EVOLVED AND DEVELOPED EXCLUSIVELY FOR USE ON, AND IN CONJUNCTION WITH, THE SPECIFIED PROJECT. ANY USE OF THE DRAWINGS, DESIGNS, MATERIAL OR INFORMATION CONTAINED HEREIN, INCLUDING COPYING, WHICH IS NOT EXPRESSLY AUTHORIZED BY ICPE, IS STRICTLY PROHIBITED AS AN INFRINGEMENT OF ITS COPYRIGHT AND MAY RESULT IN LIABILITY. © ICPE 2018

HEBER LIGHT AND POWER

COMMUNICATION MANHOLE

| | | | | | | | | | |
|-------|-----|---------|----------|-------|------|------|---|-------------|------|
| Dwn. | RF | Date | 02/07/18 | Engr. | LB | Date | — | Drawing No. | Rev. |
| Chk. | LB | Date | — | App. | | Date | | E06A | |
| Proj. | No. | 034-031 | | Scale | NONE | | | | |



Intermountain Consumer Professional Engineers, Inc.
CONSULTING ENGINEERS
1145 E. SOUTH UNION AVE.
MIDVALE, UTAH 84047
BUS. (801) 255-1111 FAX. 566-0088

| No. | DESCRIPTION | BY | DATE | APP |
|-----------|-------------|----|------|-----|
| REVISIONS | | | | |

CONFIDENTIAL

THE DRAWINGS, DESIGNS, IDEAS, ARRANGEMENTS AND PLANS INDICATED OR REPRESENTED ARE THE SOLE PROPERTY OF INTERMOUNTAIN CONSUMER PROFESSIONAL ENGINEERS, INC. (ICPE), AND ARE SUBJECT TO THE COPYRIGHT OF ICPE OR ITS ASSIGNS. THEY WERE CREATED, EVOLVED AND DEVELOPED EXCLUSIVELY FOR USE ON, AND IN CONJUNCTION WITH, THE SPECIFIED PROJECT. ANY USE OF THE DRAWINGS, DESIGNS, MATERIAL OR INFORMATION CONTAINED HEREIN, INCLUDING COPYING, WHICH IS NOT EXPRESSLY AUTHORIZED BY ICPE, IS STRICTLY PROHIBITED AS AN INFRINGEMENT OF ITS COPYRIGHT AND MAY RESULT IN LIABILITY.

Title:

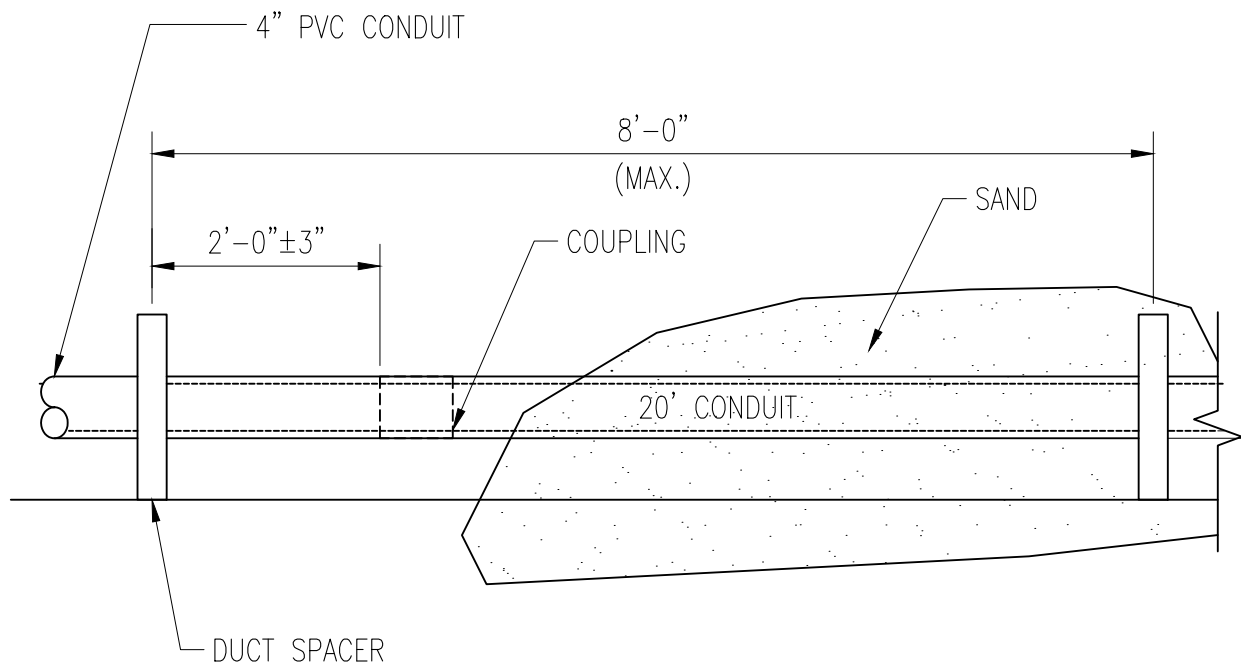
HEBER LIGHT AND POWER

COMMUNICATIONS 4" CONDUIT LAYOUT

| | | | | | | | |
|-----------|---------|---------------|-------|------|---------------|-------------|----------|
| Dwn. | RF | Date 02/07/18 | Engr. | LB | Date 02/07/18 | Drawing No. | Rev. |
| Chk. | LB | Date 02/07/18 | App. | LB | Date 02/07/18 | E01 | A |
| Proj. No. | 034-031 | | Scale | NONE | | | |

1/17/20 rferderber 034-031_E01.DWG

RMP000086



**Intermountain Consumer
Professional Engineers, Inc.**
CONSULTING ENGINEERS
1145 E. SOUTH UNION AVE.
MIDVALE, UTAH 84047
BUS. (801) 255-1111 FAX. 566-0086

| No. | DESCRIPTION | BY | DATE | APP |
|-----------|-------------|----|------|-----|
| REVISIONS | | | | |

CONFIDENTIAL

THE DRAWINGS, DESIGNS, IDEAS, ARRANGEMENTS AND PLANS INDICATED OR REPRESENTED ARE THE SOLE PROPERTY OF INTERMOUNTAIN CONSUMER PROFESSIONAL ENGINEERS, INC. (ICPE), AND ARE SUBJECT TO THE COPYRIGHT OF ICPE OR ITS ASSIGNS. THEY WERE CREATED, EVOLVED AND DEVELOPED EXCLUSIVELY FOR USE ON, AND IN CONJUNCTION WITH, THE SPECIFIED PROJECT. ANY USE OF THE DRAWINGS, DESIGNS, MATERIAL OR INFORMATION CONTAINED HEREIN, INCLUDING COPYING, WHICH IS NOT EXPRESSLY AUTHORIZED BY ICPE, IS STRICTLY PROHIBITED AS AN INFRINGEMENT OF ITS COPYRIGHT AND MAY RESULT IN LIABILITY.

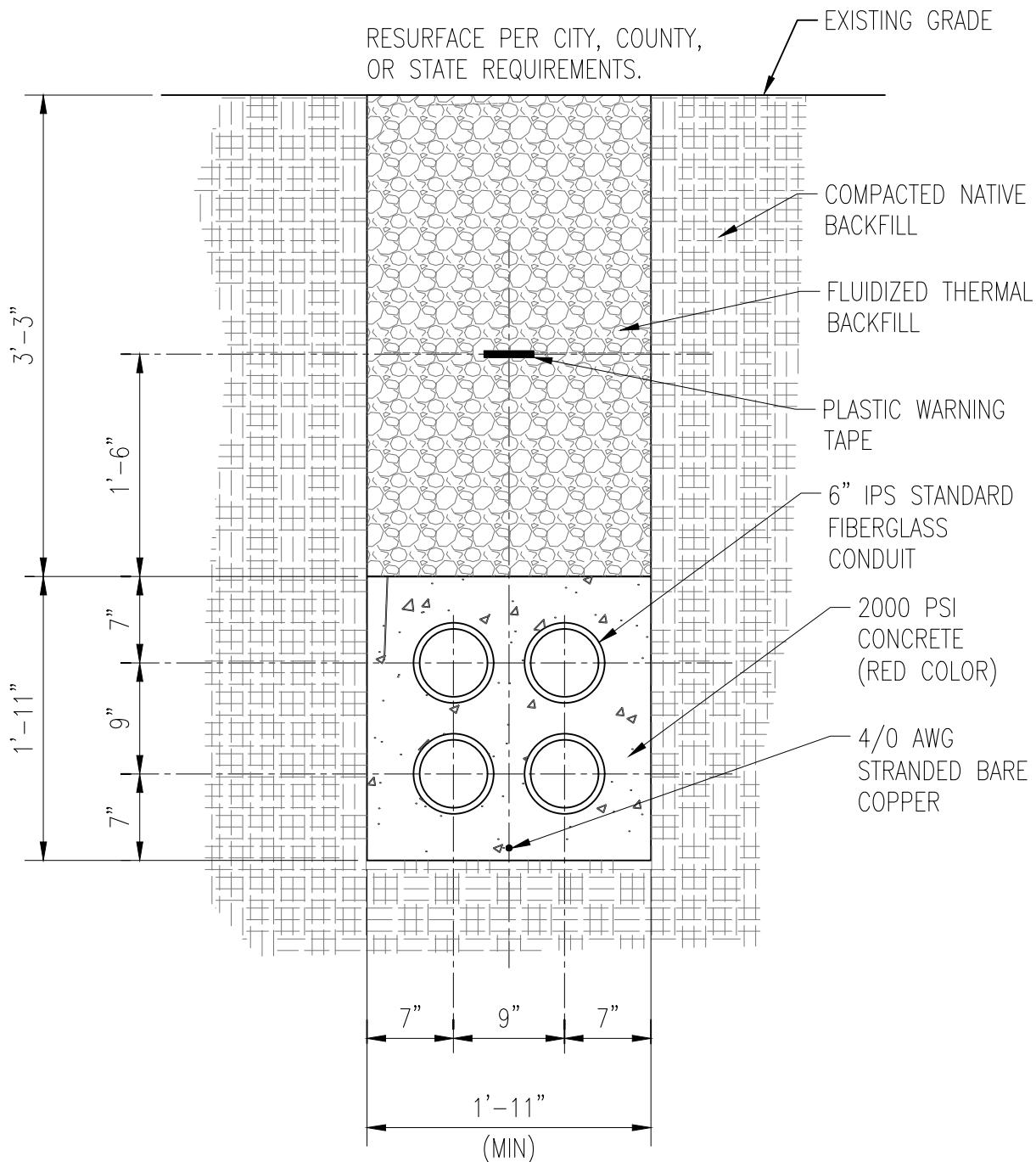
Title:

HEBER LIGHT AND POWER

COMMUNICATIONS BANK ELEVATION

| | | | | | | | |
|-----------|---------|---------------|-------|------|---------------|-------------|----------|
| Dwn. | RF | Date 02/07/18 | Engr. | LB | Date 02/07/18 | Drawing No. | Rev. |
| Chk. | LB | Date 02/07/18 | App. | LB | Date 02/07/18 | E02 | A |
| Proj. No. | 034-031 | | Scale | NONE | | | |

RMP000087



Intermountain Consumer Professional Engineers, Inc.
CONSULTING ENGINEERS
1145 E. SOUTH UNION AVE.
MIDVALE, UTAH 84047
BUS. (801) 255-1111 FAX 566-0086

| No. | DESCRIPTION | BY | DATE | APP |
|-----------|-------------|----|------|-----|
| REVISIONS | | | | |

CONFIDENTIAL

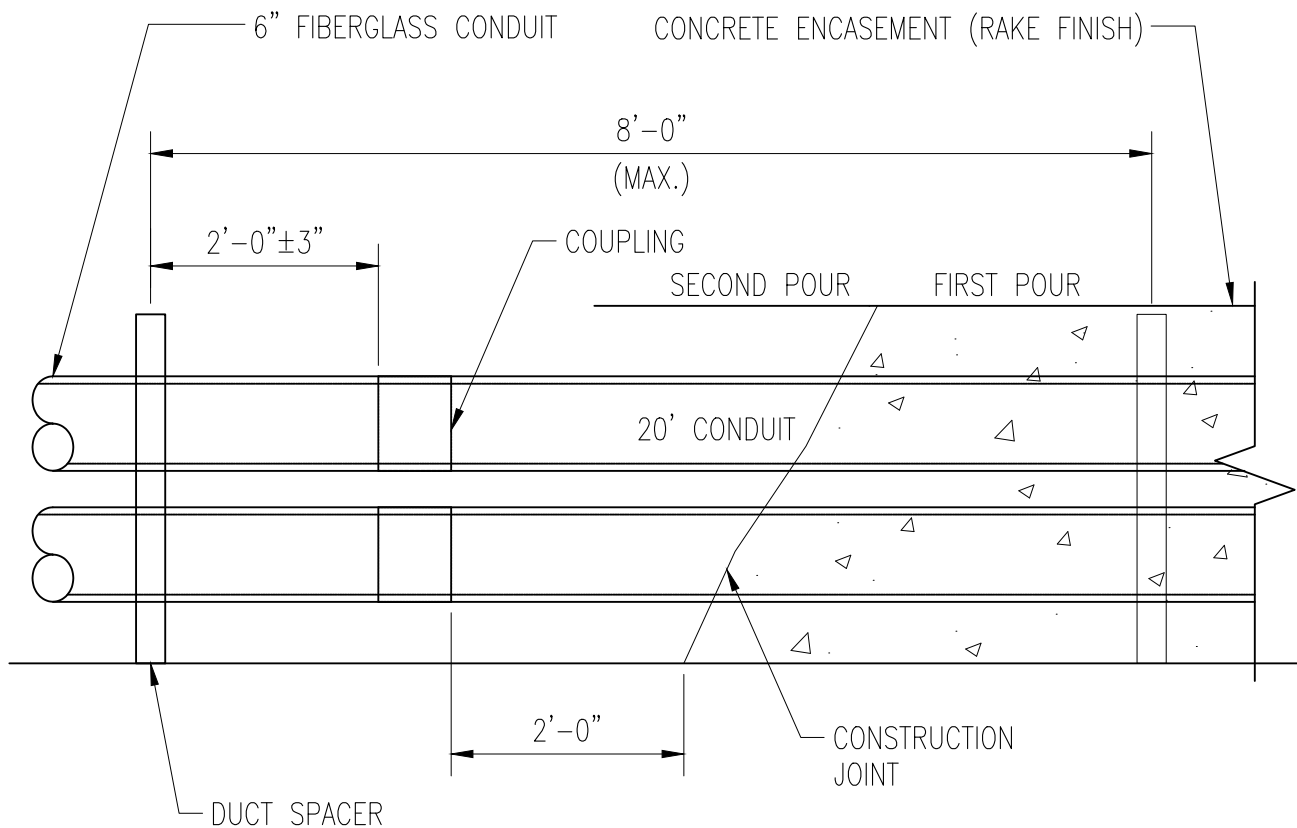
THE DRAWINGS, DESIGNS, IDEAS, ARRANGEMENTS AND PLANS INDICATED OR REPRESENTED ARE THE SOLE PROPERTY OF INTERMOUNTAIN CONSUMER PROFESSIONAL ENGINEERS, INC. (ICPE), AND ARE SUBJECT TO THE COPYRIGHT OF ICPE OR ITS ASSIGNS. THEY WERE CREATED, EVOLVED AND DEVELOPED EXCLUSIVELY FOR USE ON, AND IN CONJUNCTION WITH, THE SPECIFIED PROJECT. ANY USE OF THE DRAWINGS, DESIGNS, MATERIAL OR INFORMATION CONTAINED HEREIN, INCLUDING COPYING, WHICH IS NOT EXPRESSLY AUTHORIZED BY ICPE, IS STRICTLY PROHIBITED AS AN INFRINGEMENT OF ITS COPYRIGHT AND MAY RESULT IN LIABILITY. © ICPE

Title: **HEBER LIGHT AND POWER**
TRANSMISSION CIRCUIT 6" CONDUIT LAYOUT

| | | | | | |
|-----------|---------|---------------|-------|----|---------------|
| Dwn. | RF | Date 02/07/18 | Engr. | LB | Date 02/07/18 |
| Chk. | LB | Date 02/07/18 | App. | LB | Date 02/07/18 |
| Proj. No. | 034-031 | Scale | NONE | | |

Drawing No. **E03** Rev. **A**

RMP000088



**Intermountain Consumer
Professional Engineers, Inc.**
CONSULTING ENGINEERS
1145 E. SOUTH UNION AVE.
MIDVALE, UTAH 84047
BUS. (801) 255-1111 FAX 566-0086

| No. | DESCRIPTION | BY | DATE | APP |
|-----------|-------------|----|------|-----|
| REVISIONS | | | | |

CONFIDENTIAL

THE DRAWINGS, DESIGNS, IDEAS, ARRANGEMENTS AND PLANS INDICATED OR REPRESENTED ARE THE SOLE PROPERTY OF INTERMOUNTAIN CONSUMER PROFESSIONAL ENGINEERS, INC. (ICPE), AND ARE SUBJECT TO THE COPYRIGHT OF ICPE OR ITS ASSIGNS. THEY WERE CREATED, EVOLVED AND DEVELOPED EXCLUSIVELY FOR USE ON, AND IN CONJUNCTION WITH, THE SPECIFIED PROJECT. ANY USE OF THE DRAWINGS, DESIGNS, MATERIAL OR INFORMATION CONTAINED HEREIN, INCLUDING COPYING, WHICH IS NOT EXPRESSLY AUTHORIZED BY ICPE, IS STRICTLY PROHIBITED AS AN INFRINGEMENT OF ITS COPYRIGHT AND MAY RESULT IN LIABILITY.

Title:

HEBER LIGHT AND POWER

TRANSMISSION DUCT BANK ELEVATION

| | | | | | |
|-----------|---------|---------------|-------|------|---------------|
| Dwn. | RF | Date 02/07/18 | Engr. | LB | Date 02/07/18 |
| Chk. | LB | Date 02/07/18 | App. | LB | Date 02/07/18 |
| Proj. No. | 034-031 | | Scale | NONE | |

Drawing No.

E04

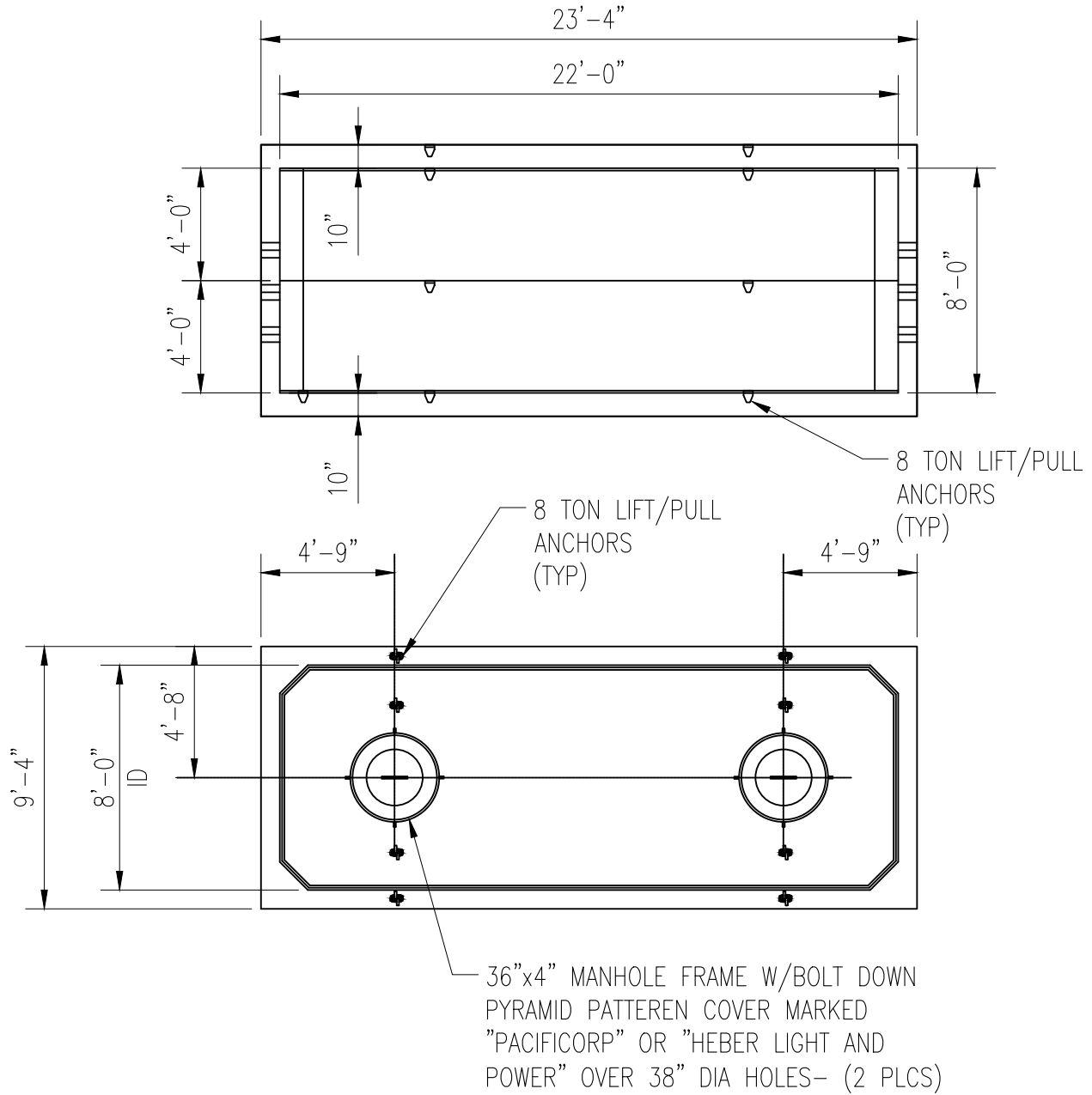
Rev.

A

1/17/20 rferderber 034-031_E04.DWG

RMP000089

MANHOLE SIDE



MANHOLE TOP



Intermountain Consumer Professional Engineers, Inc.
CONSULTING ENGINEERS
1145 E. SOUTH UNION AVE.
MIDVALE, UTAH 84047
BUS. (801) 255-1111 FAX. 566-0086

| No. | DESCRIPTION | BY | DATE | APP |
|-----------|-------------|----|------|-----|
| REVISIONS | | | | |

CONFIDENTIAL

THE DRAWINGS, DESIGNS, IDEAS, ARRANGEMENTS AND PLANS INDICATED OR REPRESENTED ARE THE SOLE PROPERTY OF INTERMOUNTAIN CONSUMER PROFESSIONAL ENGINEERS, INC. (ICPE), AND ARE SUBJECT TO THE COPYRIGHT OF ICPE OR ITS ASSIGNS. THEY WERE CREATED, EVOLVED AND DEVELOPED EXCLUSIVELY FOR USE ON, AND IN CONJUNCTION WITH, THE SPECIFIED PROJECT. ANY USE OF THE DRAWINGS, DESIGNS, MATERIAL OR INFORMATION CONTAINED HEREIN, INCLUDING COPYING, WHICH IS NOT EXPRESSLY AUTHORIZED BY ICPE, IS STRICTLY PROHIBITED AS AN INFRINGEMENT OF ITS COPYRIGHT AND MAY RESULT IN LIABILITY. © ICPE

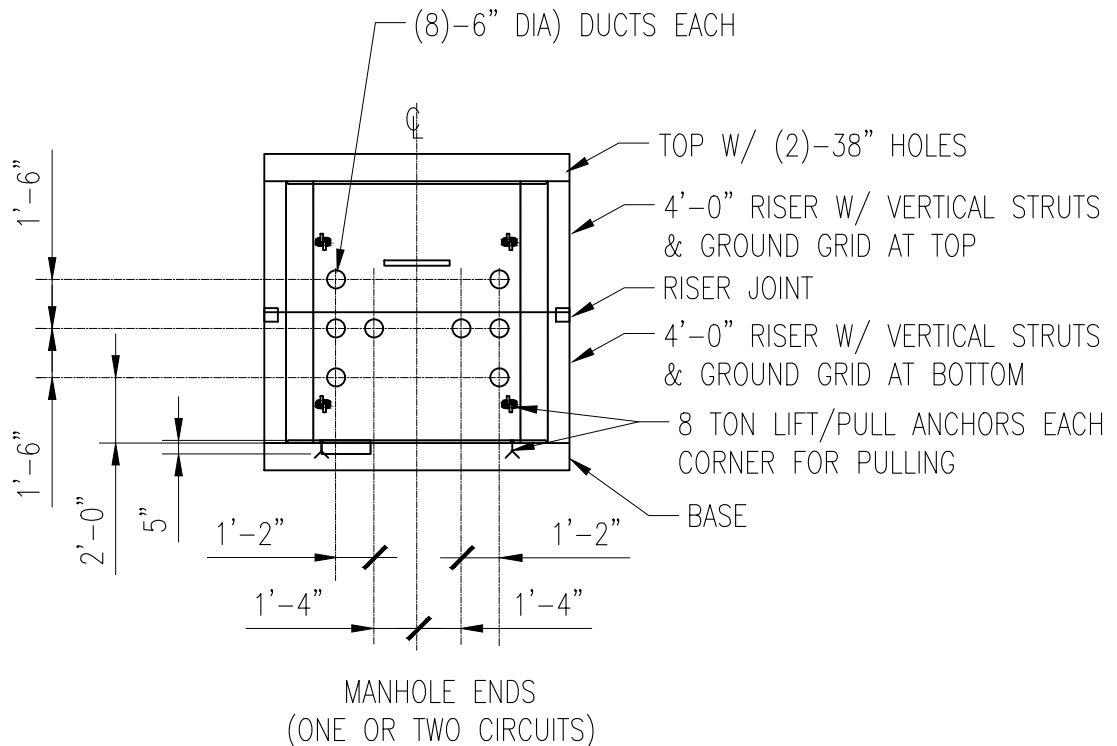
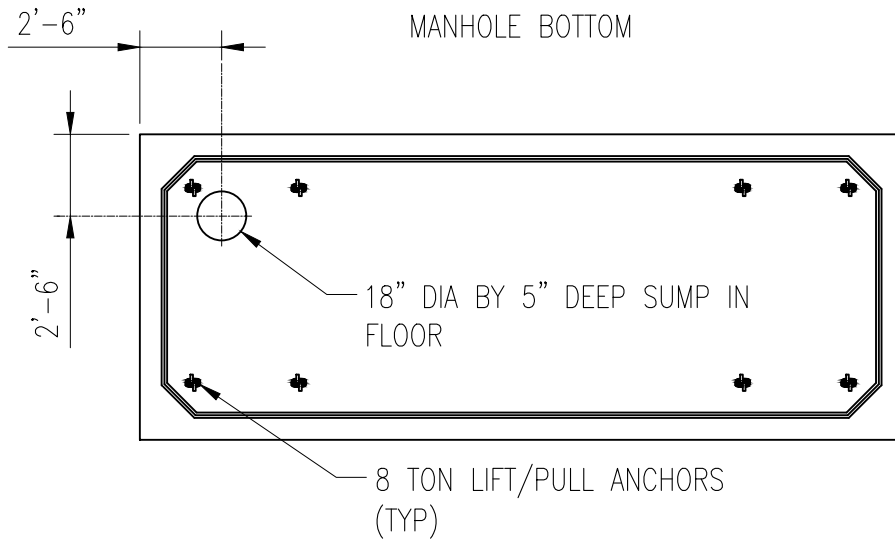
Title:

HEBER LIGHT AND POWER

MANHOLE SIDE AND TOP LAYOUTS

| | | | | | | | |
|-----------|---------|---------------|-------|------|---------------|-------------|----------|
| Dwn. | RF | Date 02/07/18 | Engr. | LB | Date 02/07/18 | Drawing No. | Rev. |
| Chk. | LB | Date 02/07/18 | App. | LB | Date 02/07/18 | E05 | A |
| Proj. No. | 034-031 | | Scale | NONE | | | |

RMP000090



NOTE:
COMMUNICATION CABLE CONDUITS SHALL NOT TERMINATE IN POWER CABLE VAULTS. SEE DWG E06A FOR COMMUNICATION MANHOLE DETAILS.



**Intermountain Consumer
Professional Engineers, Inc.**
CONSULTING ENGINEERS
1145 E. SOUTH UNION AVE.
MIDVALE, UTAH 84047
BUS. (801) 255-1111 FAX 566-0086

| No. | DESCRIPTION | BY | DATE | APP |
|-----------|-------------|----|------|-----|
| REVISIONS | | | | |

CONFIDENTIAL

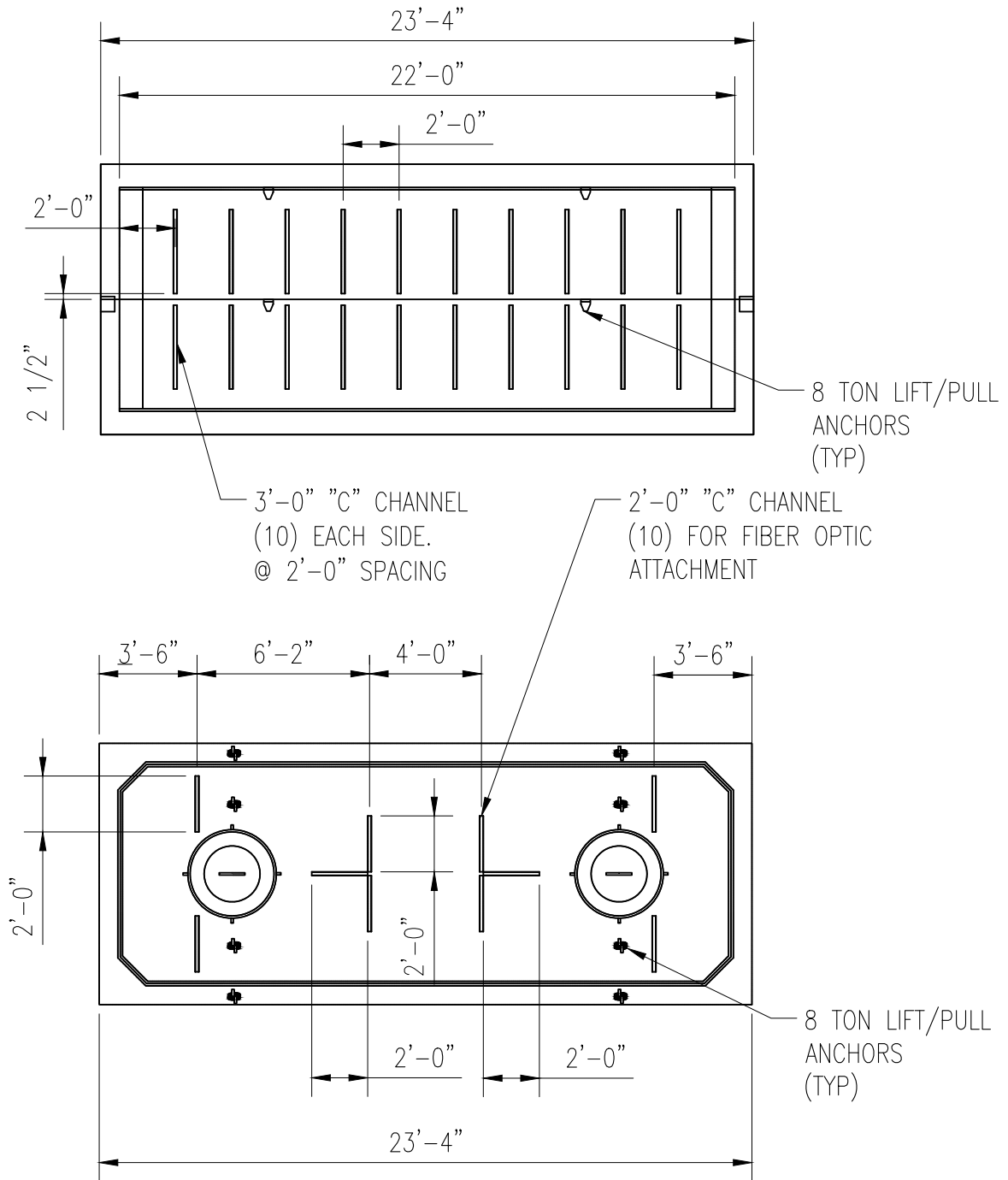
THE DRAWINGS, DESIGNS, IDEAS, ARRANGEMENTS AND PLANS INDICATED OR REPRESENTED ARE THE SOLE PROPERTY OF INTERMOUNTAIN CONSUMER PROFESSIONAL ENGINEERS, INC. (ICPE), AND ARE SUBJECT TO THE COPYRIGHT OF ICPE OR ITS ASSIGNS. THEY WERE CREATED, EVOLVED AND DEVELOPED EXCLUSIVELY FOR USE ON, AND IN CONJUNCTION WITH, THE SPECIFIED PROJECT. ANY USE OF THE DRAWINGS, DESIGNS, MATERIAL OR INFORMATION CONTAINED HEREIN, INCLUDING COPYING, WHICH IS NOT EXPRESSLY AUTHORIZED BY ICPE, IS STRICTLY PROHIBITED AS AN INFRINGEMENT OF ITS COPYRIGHT AND MAY RESULT IN LIABILITY. © ICPE

| | | | | |
|-------------------------------------|---------|---------------|-------|---------------|
| Title: HEBER LIGHT AND POWER | | | | |
| MANHOLE END AND BOTTOM LAYOUTS | | | | |
| Dwn. | RF | Date 02/07/18 | Engr. | LB |
| Chk. | LB | Date 02/07/18 | App. | LB |
| Proj. No. | 034-031 | Scale | NONE | |
| Drawing No. E06 | | | | Rev. A |

1/17/20 rferderber 034-031_E06.DWG

RMP000091

CABLE ATTACHMENT, VAULT SIDE



FIBER OPTIC ATTACHMENT, VAULT TOP



**Intermountain Consumer
Professional Engineers, Inc.**
CONSULTING ENGINEERS
1145 E. SOUTH UNION AVE.
MIDVALE, UTAH 84047
BUS. (801) 255-1111 FAX 566-0086

| No. | DESCRIPTION | BY | DATE | APP |
|-----------|-------------|----|------|-----|
| REVISIONS | | | | |

CONFIDENTIAL

THE DRAWINGS, DESIGNS, IDEAS, ARRANGEMENTS AND PLANS INDICATED OR REPRESENTED ARE THE SOLE PROPERTY OF INTERMOUNTAIN CONSUMER PROFESSIONAL ENGINEERS, INC. (ICPE), AND ARE SUBJECT TO THE COPYRIGHT OF ICPE OR ITS ASSIGNS. THEY WERE CREATED, EVOLVED AND DEVELOPED EXCLUSIVELY FOR USE ON, AND IN CONJUNCTION WITH, THE SPECIFIED PROJECT. ANY USE OF THE DRAWINGS, DESIGNS, MATERIAL OR INFORMATION CONTAINED HEREIN, INCLUDING COPYING, WHICH IS NOT EXPRESSLY AUTHORIZED BY ICPE, IS STRICTLY PROHIBITED AS AN INFRINGEMENT OF ITS COPYRIGHT AND MAY RESULT IN LIABILITY. ©ICPE

Title:

HEBER LIGHT AND POWER

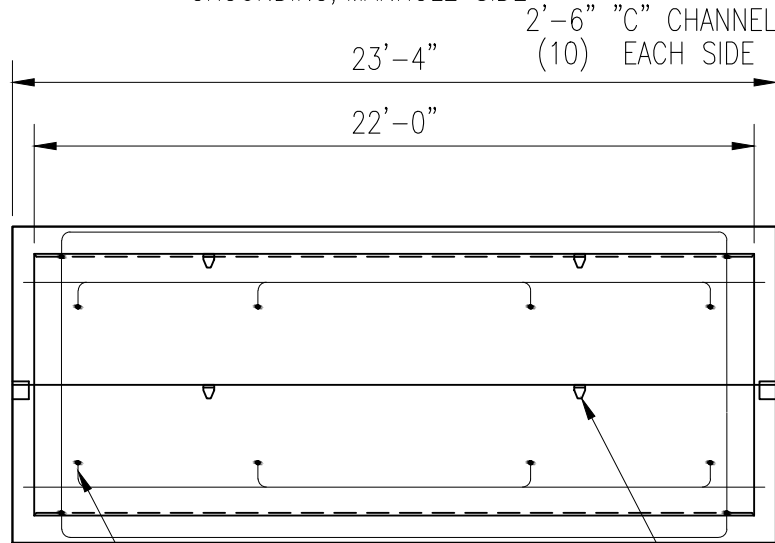
MANHOLE SIDE AND TOP "C" CHANNEL LAYOUTS

| | | | | | | | |
|-----------|---------|---------------|-------|------|---------------|-------------|----------|
| Dwn. | RF | Date 02/07/18 | Engr. | LB | Date 02/07/18 | Drawing No. | Rev. |
| Chk. | LB | Date 02/07/18 | App. | LB | Date 02/07/18 | E07 | A |
| Proj. No. | 034-031 | | Scale | NONE | | | |

1/17/20 rferderber 034-031_E07.DWG

RMP000092

GROUNDING, MANHOLE SIDE



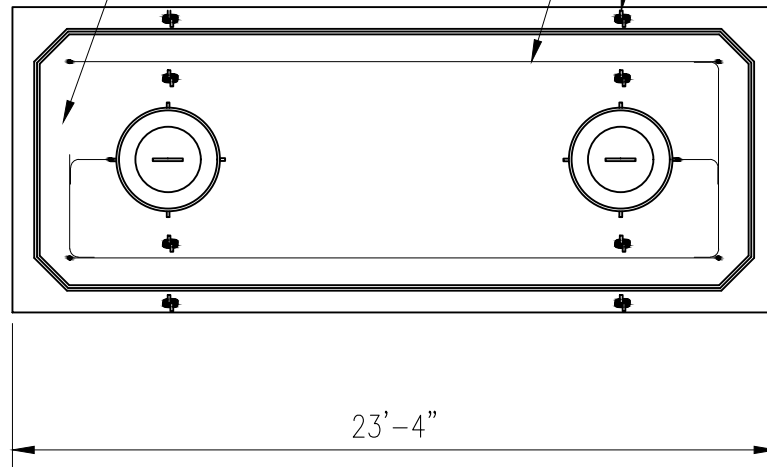
(8) 1/2" BRONZE GROUND INSERT
WITH 3/8" STEEL LEAD & INSERT
CAP PROTECTION (EACH SIDE)
PROVIDES INSIDE GROUNDING

8 TON LIFT/PULL
ANCHORS
(TYP)

1/2" GROUNDING BAR TIE TO
REINFORCING CAGE. (TYP)

LEAVE 2' MINIMUM GAP
IN GROUND BAR

8 TON LIFT/PULL ANCHORS
(TYP)



GROUNDING, MANHOLE TOP

FIBER OPTIC ATTACHMENT, VAULT TOP



**Intermountain Consumer
Professional Engineers, Inc.**
CONSULTING ENGINEERS
1145 E. SOUTH UNION AVE.
MIDVALE, UTAH 84047
BUS. (801) 255-1111 FAX 566-0086

| No. | DESCRIPTION | BY | DATE | APP |
|-----------|-------------|----|------|-----|
| REVISIONS | | | | |

CONFIDENTIAL

THE DRAWINGS, DESIGNS, IDEAS, ARRANGEMENTS AND PLANS INDICATED OR REPRESENTED ARE THE SOLE PROPERTY OF INTERMOUNTAIN CONSUMER PROFESSIONAL ENGINEERS, INC. (ICPE), AND ARE SUBJECT TO THE COPYRIGHT OF ICPE OR ITS ASSIGNS. THEY WERE CREATED, EVOLVED AND DEVELOPED EXCLUSIVELY FOR USE ON, AND IN CONJUNCTION WITH, THE SPECIFIED PROJECT. ANY USE OF THE DRAWINGS, DESIGNS, MATERIAL OR INFORMATION CONTAINED HEREIN, INCLUDING COPYING, WHICH IS NOT EXPRESSLY AUTHORIZED BY ICPE, IS STRICTLY PROHIBITED AS AN INFRINGEMENT OF ITS COPYRIGHT AND MAY RESULT IN LIABILITY. © ICPE

Title:

HEBER LIGHT AND POWER

MANHOLE SIDE AND TOP GROUNDING

| | | | | | | | |
|-----------|---------|---------------|-------|----|---------------|-------------|----------|
| Dwn. | RF | Date 02/07/18 | Engr. | LB | Date 02/07/18 | Drawing No. | Rev. |
| Chk. | LB | Date 02/07/18 | App. | LB | Date 02/07/18 | E08 | A |
| Proj. No. | 034-031 | Scale | NONE | | | | |

1/17/20 rferderber 034-031_E08.DWG

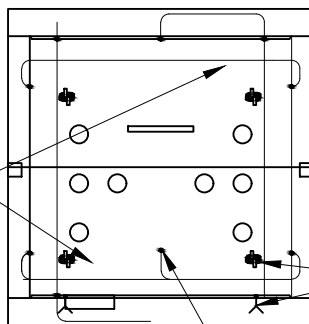
RMP000093

GROUNDING, MANHOLE BOTTOM



(4) 1/2" BRONZE GROUND INSERT WITH 3/8" STEEL LEAD & INSERT CAP PROTECTOR PROVIDES INSIDE GROUNDING (ONE EACH CORNER)

8 TON LIFT/PULL ANCHORS (TYP)



LEAVE @' MINIMUM GAP IN GROUND BAR

8 TON LIFT/PULL ANCHORS EACH CORNER FOR PULLING

(1) GROUND INSERT (EACH END) PROVIDES OUTSIDE GROUND

GROUNDING, MANHOLE ENDS



Intermountain Consumer Professional Engineers, Inc.
CONSULTING ENGINEERS
1145 E. SOUTH UNION AVE.
MIDVALE, UTAH 84047
BUS. (801) 255-1111 FAX 566-0086

| No. | DESCRIPTION | BY | DATE | APP |
|-----------|-------------|----|------|-----|
| REVISIONS | | | | |

CONFIDENTIAL

THE DRAWINGS, DESIGNS, IDEAS, ARRANGEMENTS AND PLANS INDICATED OR REPRESENTED ARE THE SOLE PROPERTY OF INTERMOUNTAIN CONSUMER PROFESSIONAL ENGINEERS, INC. (ICPE), AND ARE SUBJECT TO THE COPYRIGHT OF ICPE OR ITS ASSIGNS. THEY WERE CREATED, EVOLVED AND DEVELOPED EXCLUSIVELY FOR USE ON, AND IN CONJUNCTION WITH, THE SPECIFIED PROJECT. ANY USE OF THE DRAWINGS, DESIGNS, MATERIAL OR INFORMATION CONTAINED HEREIN, INCLUDING COPYING, WHICH IS NOT EXPRESSLY AUTHORIZED BY ICPE, IS STRICTLY PROHIBITED AS AN INFRINGEMENT OF ITS COPYRIGHT AND MAY RESULT IN LIABILITY. © ICPE

| | | | | |
|-------------------------------------|---------|---------------|-------|---------------|
| Title: HEBER LIGHT AND POWER | | | | |
| MANHOLE BASE AND END GROUNDING | | | | |
| Dwn. | RF | Date 02/07/18 | Engr. | LB |
| Chk. | LB | Date 02/07/18 | App. | LB |
| Proj. No. | 034-031 | Scale | NONE | |
| Drawing No. E09 | | | | Rev. A |