

March 4, 2025

VIA ELECTRONIC FILING

Utah Public Service Commission
Heber M. Wells Building, 4th Floor
160 East 300 South
Salt Lake City, UT 84114

Attention: Gary Widerburg
Commission Administration

RE: **Docket No. 25-035-11**
Major Event Report for January 18, 2025

Rocky Mountain Power submits a request for a major event exclusion for a vehicle collision in Park City, Utah that caused a utility pole to fall, bringing down additional poles and obstructing the roadway with power lines on January 18, 2025. The event exceeded the Commission approved threshold for customer minutes lost in a 24-hour period.

The report provides details including costs incurred, restoration resources, number of customers off supply, customer minutes lost, and SAIDI, SAIFI, CAIDI figures. Exhibit A provides the backup file for the calculations in the report.

Upon Commission approval, Rocky Mountain Power will exclude outage information for these events from its network performance reporting and from customer guarantee failure payments.

Informal inquiries may be made to Max Backlund at (801) 220-3121.

Sincerely,



Joelle Steward
Senior Vice President, Regulation

Enclosures

CERTIFICATE OF SERVICE

Docket No. 25-035-11

I hereby certify that on March 4, 2025, a true and correct copy of the foregoing was served by electronic mail to the following:

Utah Office of Consumer Services

Michele Beck mbeck@utah.gov
ocs@utah.gov

Division of Public Utilities

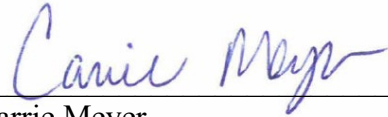
dpudatarequest@utah.gov

Assistant Attorney General

Patricia Schmid pschmid@agutah.gov
Robert Moore rmoore@agutah.gov
Patrick Grecu pgrecu@agutah.gov

Rocky Mountain Power

Data Request Response Center datarequest@pacificorp.com
Jana Saba jana.saba@pacificorp.com
utahdockets@pacificorp.com
Max Backlund max.backlund@pacificorp.com



Carrie Meyer
Adviser, Regulatory Operations



**Report to the Utah Public Utility Commission
Electric Service Reliability
Major Event Report for January 18, 2025**

Event Date: January 18, 2025
 Date Submitted: March 4, 2025
 Primary Affected Locations: Utah, Statewide
 Primary Cause: Vehicle Accident
 Exclude from Reporting Status: Yes
 Report Prepared by: Cara Glennon-Olsen
 Report Approved by: Kevin Benson

Event Description and Restoration Summary

On January 18, 2025, a vehicle collision in Park City, Utah, caused a utility pole to fall, bringing down two additional poles and obstructing the roadway with power lines. Crews isolated the affected section, re-energized most customers, and replaced the damaged poles with support from American Fork personnel. Due to the absence of a previously removed tie between FP# 161001 and FP# 213930 (related to a Fire High Consequence Area project), power restoration was limited to all but 2-3 directly impacted customers. Approximately 457 customers experienced a 16-hour outage as crews worked cautiously to avoid overloading the Silver Creek Substation transformer. This major event affected 7,283 customers and registered 5.21 system average interruption duration index minutes at the state level.

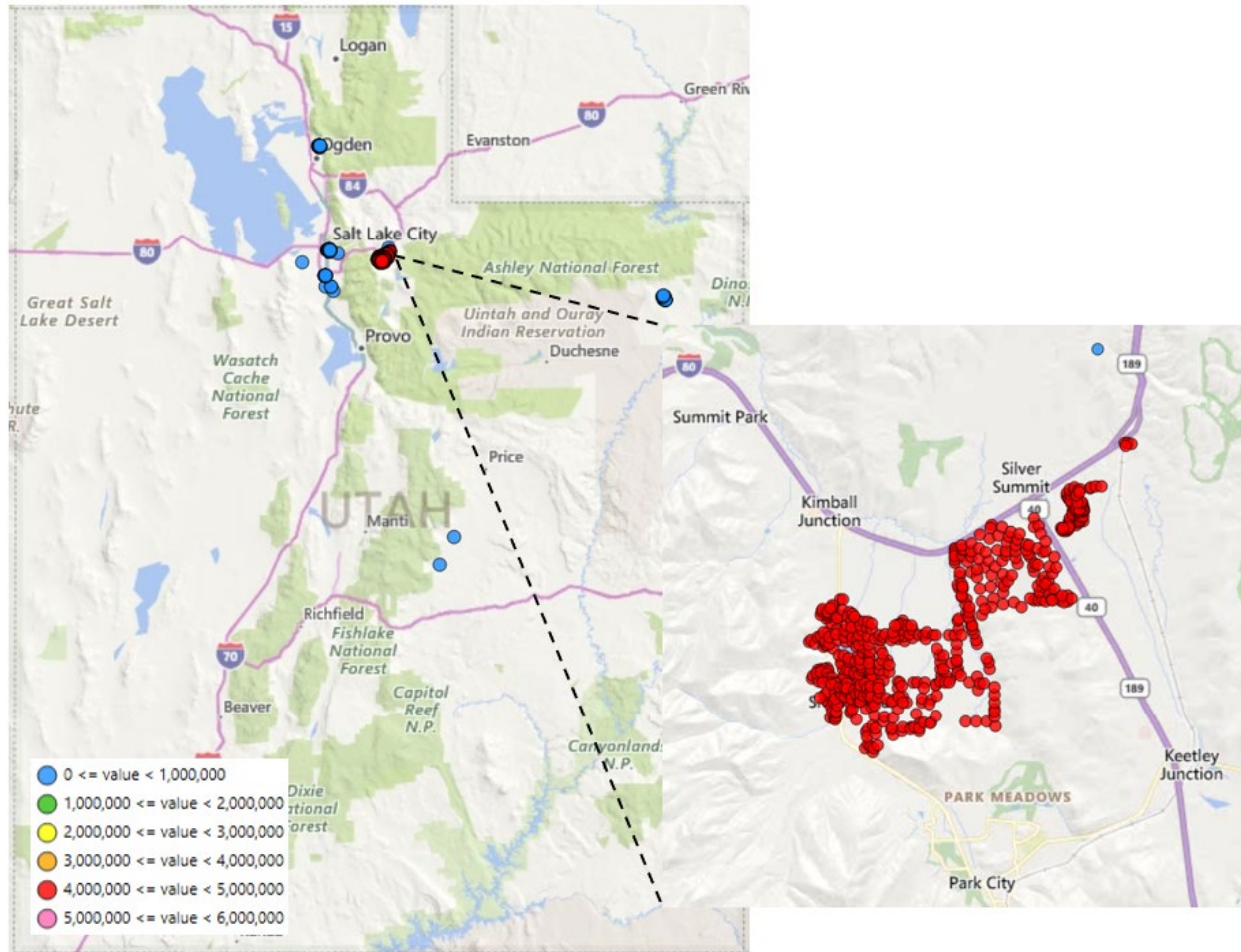
Outage Summary

Event Outage Summary	
Number Interruptions (sustained events)	29
Total Customers Interrupted (sustained events)	7,283
Total Customer Minutes Lost	5,487,544
State Event SAIDI Impact	5.21
CAIDI	753
Major Event Start	1/18/25 12:00 AM
Major Event End	1/19/25 5:00 AM

Restoration Intervals

Total Customer Sustained Outage Events	< 3 Hrs.	3 – 24 Hrs.	24+ Hrs.
7,283	1,894	2,562	2,827

Power Outages January 18, 2025, to January 20, 2025





Restoration Resources

MAJOR EVENT RESOURCES UTILIZED			
Personnel		Materials	
Troubleman/assessors	0	# Poles (D)	3
Internal local crewmembers	13	# Poles (T)	0
Internal borrowed crewmembers	0	# Approx. conductor Line (feet)	0
External (contract) crewmembers	0	# Transformers	3
Substation crewmembers	0	# Crossarms	4
Vegetation crewmembers	0	Insulators	4
# Support staff	0	Cutouts	4
Line crewman	0	Line fuses	0
Contract crewman	0	Line splices	0
Troubleman	0	Guy	0
Assessor	0	Other (Arresters)	3
Tree crewman	0	Other (Covers)	0
Foreman	1	Other (specify here)	0
Administrative	0	SPECIALIZED EQUIPMENT UTILIZED	
Substation	0	# Snowcats	0
Transmission	0	# Snowmobiles	0
Transportation	0	# Helicopters	0
Warehouseman	0	# Horses	0
Other (specify here)	0	Other (specify here)	0
Other (specify here)	0	Other (specify here)	0
Total	14	Other (specify here)	0

Estimated Major Event Costs

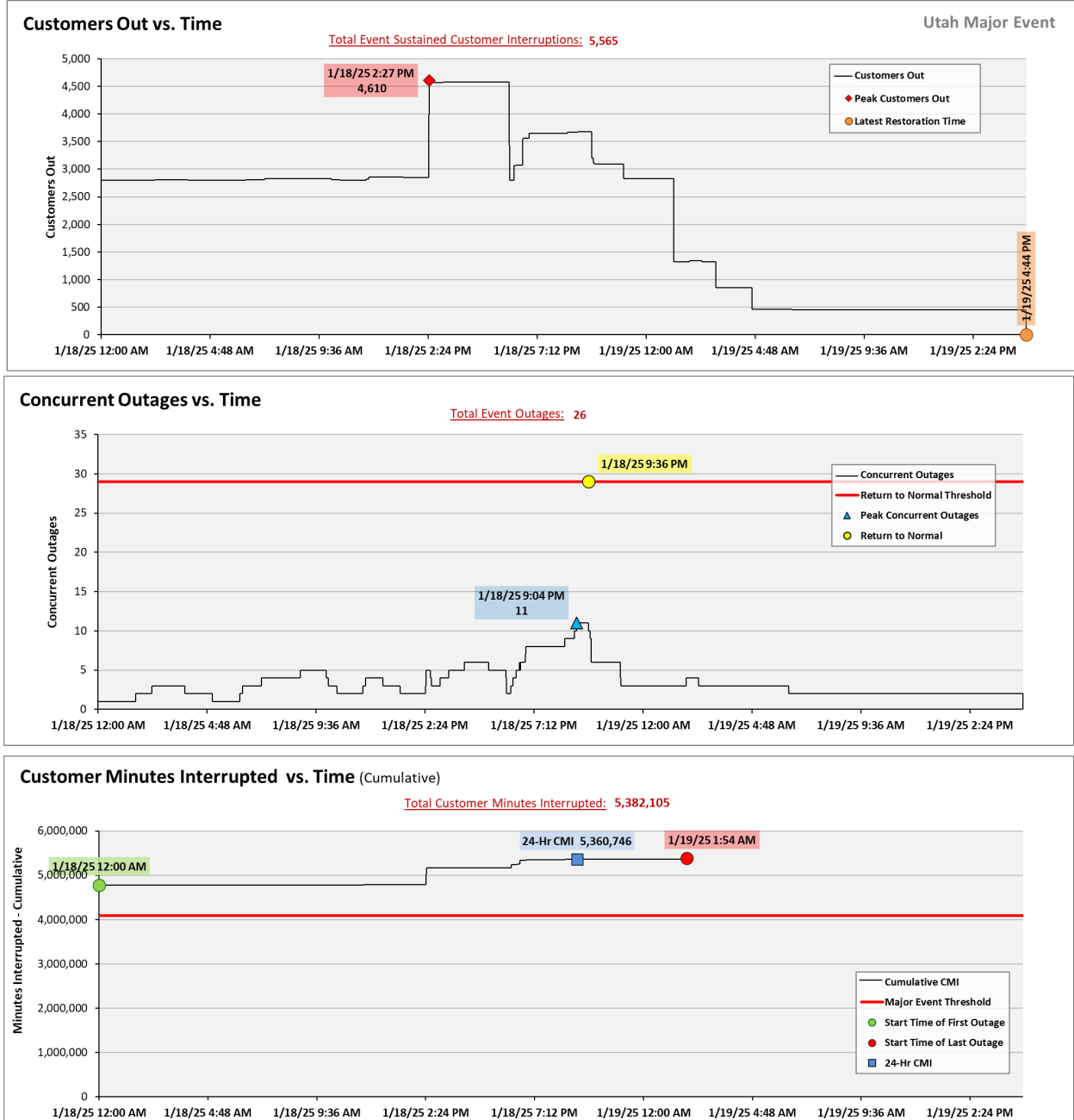
Estimated \$	Labor	Contracts	Materials	Overheads	TOTAL
Capital	\$30,914	\$0	\$12,739	\$624	\$44,277
Expense					\$0
Total	\$30,914	\$0	\$12,739	\$624	\$44,277



Major Event Declaration

Rocky Mountain Power is requesting designation of these events and its consequences to be classified as a “Major Event” for exclusion from network performance reporting. This major event exceeded the Company’s current Utah threshold for customer minutes lost in a 24-hour period, consistent with Utah Administrative Code R746-313. The 2025 annual threshold for Utah is 4,084,972 customer minutes lost (3.88 State SAIDI minutes).

SAIDI, SAIFI, CAIDI by Reliability Reporting Region





PacifiCorp Major Event Report - Customer Analysis

Utah		Customer Analysis 1/18/2025 through 1/19/2025					Customers Restored by Intervals								Major Event Only - metric by operating area customer counts		
	PacifiCorp Major Events Report Customer Analysis*	Sustained Customers Off	% Sustained Customers Off	CML	Number of Sustained Interruptions	Customer Count	< 5 min	5 min - 3 hrs	3 hrs - 24 hrs	24 hrs - 48 hrs	48 hrs - 72 hrs	72 hrs - 96 hrs	96 + hrs	% Sustained Customers Restored in 3 Hours PS4	SAIDI	SAIFI	CAIDI
PC	PacifiCorp	7,283	0%	5,487,544	29	2,126,984	-	1,894	2,562	2,827	-	-	-	26%	2.580	0.003	753
RMP	Rocky Mountain Power	7,283	1%	5,487,544	29	1,293,815	-	1,894	2,562	2,827	-	-	-	26%	4.241	0.006	753
ST	State	7,283	1%	5,487,544	29	1,054,136	-	1,894	2,562	2,827	-	-	-	26%	5.206	0.003	753
UT	CEDAR CITY	494	1%	29,683	2	42,190	-	494	-	-	-	-	-	100%	0.704	0.012	60
UT	JORDAN VALLEY	27	0%	4,557	3	256,293	-	26	1	-	-	-	-	96%	0.018	0.000	169
UT	OGDEN	267	0%	77,282	3	119,725	-	-	267	-	-	-	-	0%	0.645	0.002	289
UT	PARK CITY	2,828	7%	4,835,234	3	38,513	-	1	-	2,827	-	-	-	0%	125.548	0.073	1,710
UT	PRICE	3	0%	518	3	10,594	-	2	1	-	-	-	-	67%	0.049	0.000	173
UT	RICHFIELD	1,777	11%	346,605	3	16,838	-	-	1,777	-	-	-	-	0%	20.585	0.106	195
UT	SLC METRO	1,845	1%	186,622	10	237,700	-	1,329	516	-	-	-	-	72%	0.785	0.008	101
UT	VERNAL	42	0%	7,044	2	12,830	-	42	-	-	-	-	-	100%	0.549	0.003	168

*Only current event specific metric impact shown. Does not include values from other events which may have occurred in other regions during the same time period.

Data as of
2/21/2025

