

April 29, 2025

VIA ELECTRONIC FILING

Utah Public Service Commission
Heber M. Wells Building, 4th Floor
160 East 300 South
Salt Lake City, UT 84114

Attention: Gary Widerburg
Commission Administration

RE: Docket No. 25-035-28
Major Event Report for March 17-18, 2025

Rocky Mountain Power submits a request for a major event exclusion for a weather-related outage. In the afternoon of March 17, 2025, and continuing into March 18, a cold front moved across Northern Utah bringing winds and heavy wet snow heavily impacting Salt Lake, Utah and Tooele Valleys. Additionally, a pole in Southeastern Utah failed, impacting customers from Monticello, Blanding, and the Navajo Nation. The event exceeded the Commission approved threshold for customer minutes lost in a 24-hour period.

The report provides details including costs incurred, restoration resources, number of customers off supply, customer minutes lost, and SAIDI, SAIFI, CAIDI figures.

Upon Commission approval, Rocky Mountain Power will exclude outage information for these events from its network performance reporting and from customer guarantee failure payments.

Informal inquiries may be made to Max Backlund at (801) 220-3121.

Sincerely,



Joelle Steward
Senior Vice President, Regulation

Enclosures

CERTIFICATE OF SERVICE

Docket No. 25-035-28

I hereby certify that on April 29, 2025, a true and correct copy of the foregoing was served by electronic mail to the following:

Utah Office of Consumer Services

Michele Beck mbeck@utah.gov
ocs@utah.gov

Division of Public Utilities

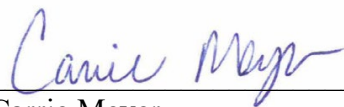
dpudatarequest@utah.gov

Assistant Attorney General

Patricia Schmid pschmid@agutah.gov
Robert Moore rmoore@agutah.gov
Patrick Grecu pgrecu@agutah.gov

Rocky Mountain Power

Data Request Response Center datarequest@pacificorp.com
Jana Saba jana.saba@pacificorp.com
utahdockets@pacificorp.com
Max Backlund max.backlund@pacificorp.com



Carrie Meyer
Manager, Discovery & Regulatory Operations

**Report to the Utah Public Service Commission
Electric Service Reliability
Major Event Report for March 17-19, 2025**

Event Date:	March 17-18, 2025
Date Submitted:	April 29, 2025
Primary Affected Locations:	Utah, Statewide
Primary Cause:	Loss of Transmission/Snowstorm
Exclude from Reporting Status:	Yes
Report Prepared by:	Chase Talbot
Report Approved by:	Chris Spencer/Kevin Benson

Event Description and Restoration Summary

During the afternoon of March 17 through the morning of March 19, Utah experienced two large-impacting outage events that exceeded the major event threshold at the state level. In the afternoon of March 17, 2025, and continuing into March 18 a cold front moved across Northern Utah bringing winds and heavy wet snow heavily impacting Salt Lake, Utah and Tooele Valleys. The event impacted 23,388 customers with outage durations ranging from 12 minutes to 14 hours 59 minutes.

In the evening of March 18, a pole on the 345 kV Pinto to Four Corners transmission line failed causing widespread outages to customers in Southeastern Utah. The event impacted 11,706 customers including bulk power to Monticello City and Blanding City municipal utilities, the Navajo Nation, and one major customer. Outage durations for the event ranged from 8 hours 34 minutes to 8 hours 52 minutes.

Overall, the major event impacted 35,367 customers across the state. Details regarding these outages and restoration actions taken are detailed in the next section.

Salt Lake Valley Snowstorm

In the afternoon of March 17, 2025, strong winds moved across Northern Utah ahead of a cold front that moved into the region overnight bringing heavy wet snow across the region. Areas in the Salt Lake, Utah and Tooele Valleys receive six to ten inches of heavy dense snowfall leading to widespread outages. The snowstorm caused trees to fall, damage to poles and crossarms, and overhead conductor to fall. Crews along the Wasatch Front worked throughout

the night and into the morning of March 19 to restore power to customers. The last customer restoration occurred on March 19, 2025, at 10:08 AM.

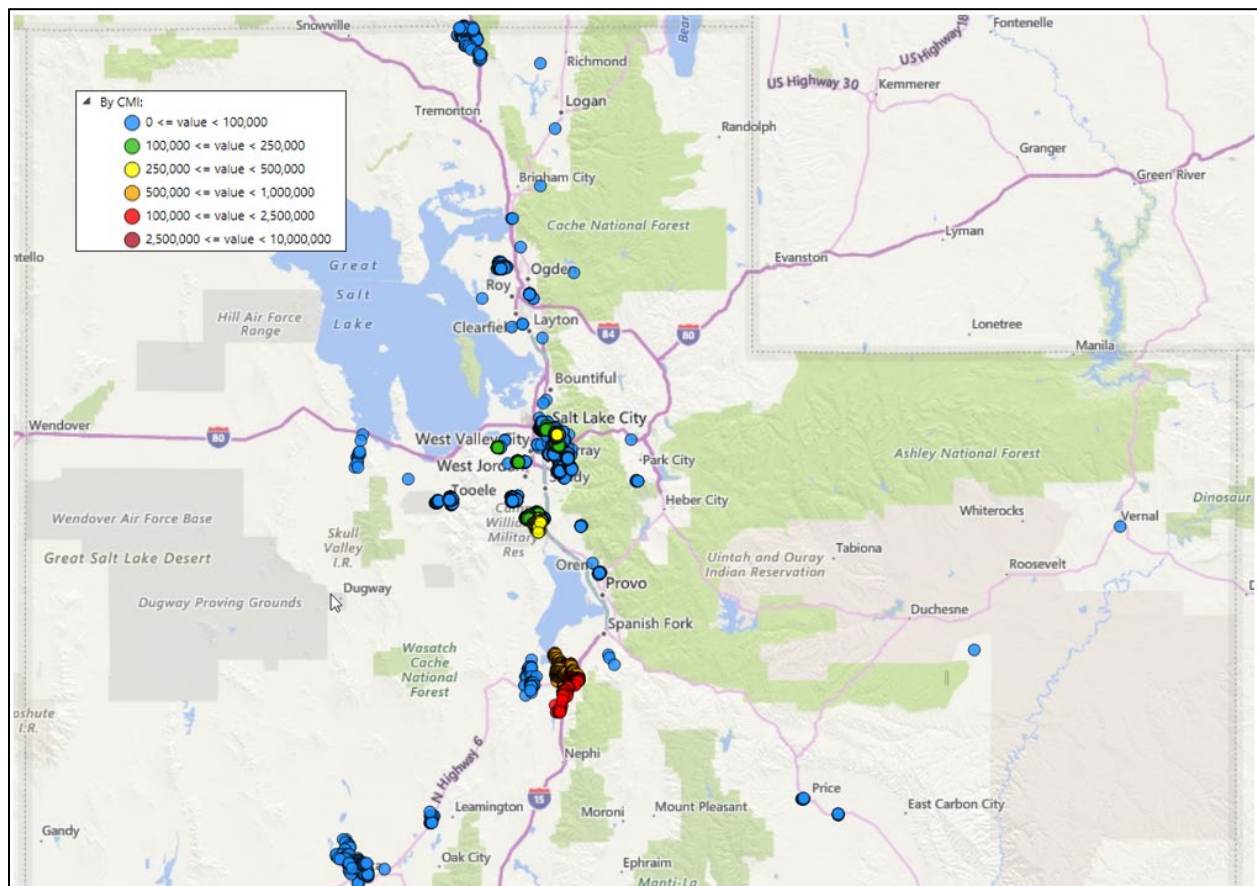


Figure 1: The Northern Utah snowstorm affected customers in Salt Lake, Tooele, and Utah Valley's.

Moab Transmission Outage

In normal operating conditions, Southeastern Utah is served by two 345 kV transmission lines and a 138 kV transmission system. On March 18, 2025, one of the two 345 kV transmission lines was out of service for two days to replace a failing transmission structure, and the 138 kV transmission line was scheduled out of service for four months due to capital improvement work on the line. These scheduled outages put Southeastern Utah and approximately 10,000 customers on the radial Pinto to Four Corners 345 kV transmission line, this radial feed was intended to last two days.

At 6:20 PM on March 18, a two-pole transmission structure on the radial line failed, causing an outage for 9,814 customers. Crews were dispatched in parallel to locate the problem on the Pinto to Four Corners 345 kV transmission line and complete scheduled work on the Huntington to Pinto 345 kV transmission line. Crews completed the scheduled structure replacement before crews repaired the failed transmission structure and began bringing customers on-line in the morning of March 19.

The outage impacted bulk power to Monticello City and Blanding City municipal utilities, the Navajo Nation, and one major customer.

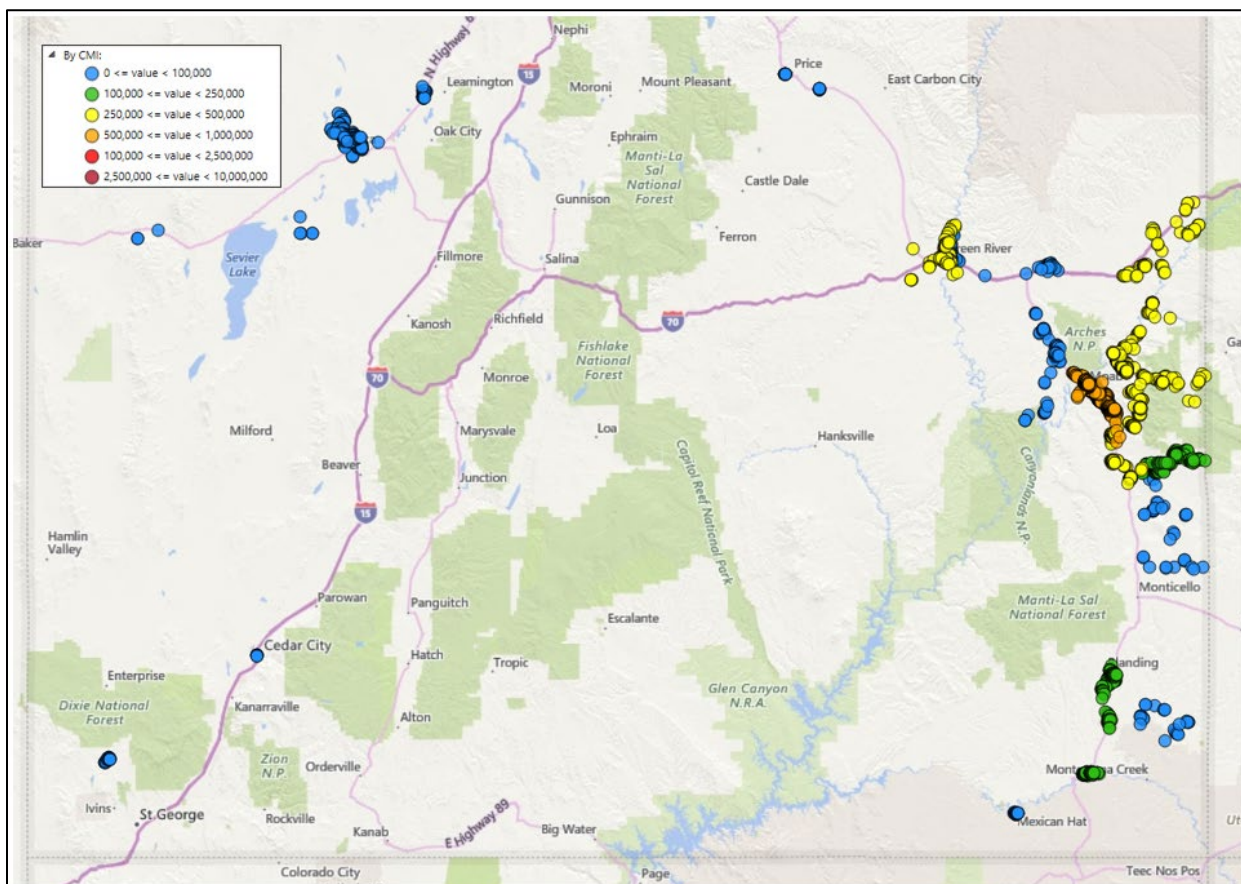


Figure 2: Shows the impact of the Moab transmission outage in Southeastern Utah.

The Rocky Mountain Power Department Operations Center (DOC) and Emergency Coordination Center (ECC) were activated at 12:30 PM on Tuesday, March 18, 2025, to coordinate stakeholder activities associated with the heavy wet snow. The DOC and ECC activation continued into the evening of March 18 due to the 345 kV line from Pinto to Four Corners outage and was deactivated at 10:30 AM on March 19, 2025, after service had been restored impacted customers and normal operations resumed.

Outage Summary

Event Outage Summary	
Number of Interruptions (sustained events)	206
Total Customers Interrupted (sustained events)	35,367
Total Customer Minutes Lost	11,593,080
State Event SAIDI Impact	11.00 minutes
CAIDI	328
Major Event Start	3/17/2025 3:45 PM
Major Event End	3/19/2025 5:13 AM

Restoration Intervals

Total Customer Sustained Outage Events	< 3 Hrs.	3 – 24 Hrs.	24+ Hrs.
35,367	11,671	23,696	0

Restoration Resources

Personnel Resources	
Internal Local Crewmembers	69
Substation Crewmember	9
# of Support Staff	8
Foreman	28
Administrative	4
Transportation	2
Warehouseman	1
TOTAL	113

Materials	
# Poles (distribution)	2
# Poles (transmission)	2
Approximate Line Feet (conductor)	3,600
# Transformers	1
# Crossarms	6
Insulators	67
Cutouts	19
Line splices	684
Guy Wire	25
Arrestors	18

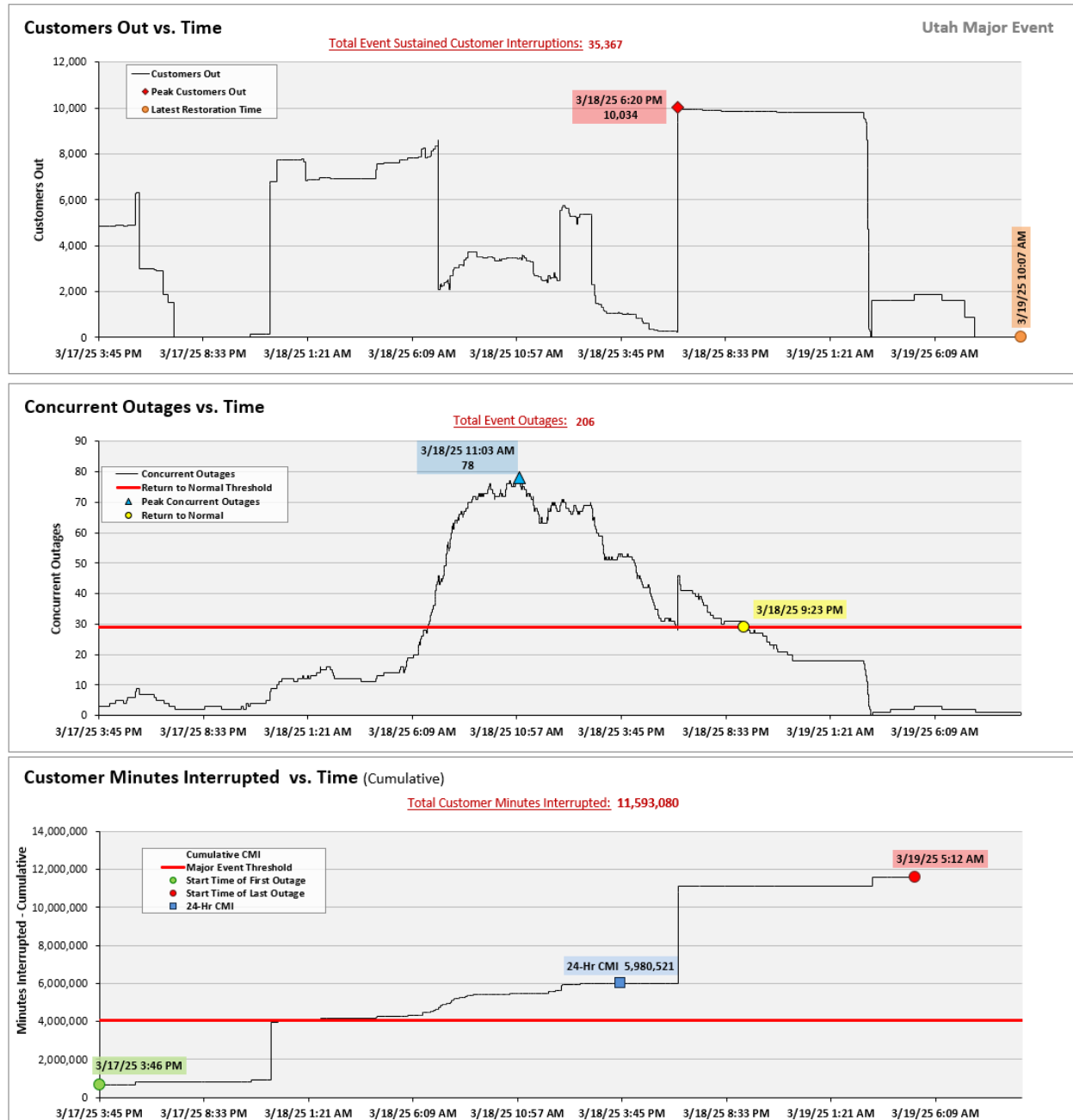
Estimated Major Event Costs

Estimated \$	Labor	Contracts	Materials	Overheads	TOTAL
Capital	\$63,017	\$4,824	\$42,120	\$1,395	\$111,356
Expense	\$163,036	\$46,703	\$12,772	\$672	\$223,182
Total	\$226,053	\$51,527	\$54,892	\$2,066	\$334,538

Major Event Declaration

Rocky Mountain Power is requesting designation of these events and its consequences to be classified as a “Major Event” for exclusion from network performance reporting. This major event exceeded the Company’s current Utah threshold for customer minutes lost in a 24-hour period, consistent with Utah Administrative Code R746-313. The 2025 annual threshold for Utah is 4,084,972 customer minutes lost (3.88 State SAIDI minutes).

SAIDI, SAIFI, CAIDI by Reliability Reporting Region



PacifiCorp Major Event Report - Customer Analysis

	Utah	Customer Analysis 3/17/2025 through 3/19/2025					Customers Restored by Intervals								Major Event Only - metric by operating area customer counts		
	PacifiCorp Major Events Report Customer Analysis*	Sustained Customers Off	% Sustained Customers Off	CML	Number of Sustained Interruptions	Customer Count	< 5 min	5 min - 3 hrs	3 hrs - 24 hrs	24 hrs - 48 hrs	48 hrs - 72 hrs	72 hrs - 96 hrs	96 + hrs	% Sustained Customers Restored in 3 Hours PS4	SAIDI	SAIFI	CAIDI
PC	PacifiCorp	35,367	2%	11,593,080	206	2,126,984	14,150	11,671	23,696	-	-	-	-	33%	5.45	0.017	328
RMP	Rocky Mountain Power	35,367	3%	11,593,080	206	1,293,815	14,150	11,671	23,696	-	-	-	-	33%	8.96	0.027	328
UT	Utah	35,367	3%	11,593,080	206	1,054,136	14,150	11,671	23,696	-	-	-	-	33%	11.00	0.034	328
UT	AMERICAN FORK	6,855	5%	3,096,206	14	143,535	2,265	252	6,603	-	-	-	-	4%	21.57	0.048	452
UT	CEDAR CITY	45	0%	3,727	2	42,190	-	44	1	-	-	-	-	98%	0.09	0.001	83
UT	JORDAN VALLEY	7,819	3%	1,196,065	32	256,293	1,213	4,996	2,823	-	-	-	-	64%	4.67	0.031	153
UT	LAYTON	6	0%	559	2	82,235	4,504	6	-	-	-	-	-	100%	0.01	0.000	93
UT	MOAB	11,706	119%	5,608,240	21	9,798	-	282	11,424	-	-	-	-	2%	572.39	1.195	479
UT	OGDEN	79	0%	21,915	6	119,725	-	12	67	-	-	-	-	15%	0.18	0.001	277
UT	PARK CITY	26	0%	10,867	6	38,513	-	5	21	-	-	-	-	19%	0.28	0.001	418
UT	PRICE	11	0%	295	1	10,594	1	11	-	-	-	-	-	100%	0.03	0.001	27
UT	RICHFIELD	2	0%	182	2	16,838	-	2	-	-	-	-	-	100%	0.01	0.000	91
UT	RICHFIELD (DELTA)	211	5%	22,004	9	4,003	-	201	10	-	-	-	-	95%	5.50	0.053	104
UT	SLC METRO	7,610	3%	1,485,955	102	237,700	4,262	5,136	2,474	-	-	-	-	67%	6.25	0.032	195
UT	SMITHFIELD	7	0%	1,736	2	29,670	-	-	7	-	-	-	-	0%	0.06	0.000	248
UT	TREMONTON	-	0%	-	6	-	-	-	-	-	-	-	-	0%	0.00	0.000	-
UT	TOOELE	989	3%	145,304	-	29,675	1,905	723	266	-	-	-	-	73%	4.90	0.033	147
UT	VERNAL	1	0%	24	1	12,830	-	1	-	-	-	-	-	100%	0.00	0.000	24

*Only current event specific metric impact shown. Does not include values from other events which may have occurred in other regions during the same time period.

Data as of
4/22/2025

PacifiCorp Major Event Report – SSC by State Analysis

	Utah	Event 03/17/25 through 03/19/25						Month 03/01/25 through 03/31/25						YTD FY2026 01/01/25 through 03/31/25					
		Major Events Included			Major Event Excluded*			Major Events Included			Major Events Excluded*			Major Events Included			Major Events Excluded*		
		SAIDI	SAIFI	CAIDI	SAIDI	SAIFI	CAIDI	SAIDI	SAIFI	CAIDI	SAIDI	SAIFI	CAIDI	SAIDI	SAIFI	CAIDI	SAIDI	SAIFI	CAIDI
	PacifiCorp Major Events Report SSC by State																		
PC	PacifiCorp	5.80	0.020	292	0.35	0.003	108	17.30	0.103	167	7.84	0.065	120	80.07	0.300	267	20.05	0.169	119
RMP	Rocky Mountain Power	10.00	0.034	292	0.61	0.006	108	15.69	0.087	180	6.73	0.060	112	31.84	0.190	168	18.72	0.158	119
UT	Utah	11.71	0.040	292	0.71	0.007	108	17.25	0.093	185	6.25	0.060	104	33.48	0.188	178	17.37	0.149	117
UT	AMERICAN FORK	2.94	0.007	452	0.00	0.000	103	3.40	0.010	340	0.46	0.004	132	4.18	0.018	234	1.24	0.011	110
UT	CEDAR CITY	0.00	0.000	84	0.00	0.000	108	0.03	0.000	94	0.03	0.000	96	0.12	0.001	125	0.11	0.001	123
UT	CEDAR CITY (MILFORD)	0.00	0.000	191	0.00	0.000	191	0.00	0.000	143	0.00	0.000	143	0.04	0.000	133	0.04	0.000	133
UT	EVANSTON	0.00	0.000	0	0.00	0.000	0	0.00	0.000	193	0.00	0.000	193	0.00	0.000	227	0.00	0.000	227
UT	JORDAN VALLEY	1.14	0.007	154	0.01	0.000	296	1.90	0.014	132	0.77	0.007	110	4.86	0.044	111	3.72	0.036	102
UT	LAYTON	0.00	0.000	93	0.00	0.000	0	0.32	0.005	67	0.32	0.005	67	0.56	0.006	93	0.56	0.006	93
UT	MOAB	5.33	0.011	476	0.01	0.000	123	5.43	0.013	429	0.11	0.002	71	5.44	0.013	429	0.12	0.002	74
UT	MONTPELIER	0.00	0.000	0	0.00	0.000	0	0.84	0.004	223	0.84	0.004	223	0.84	0.004	223	0.84	0.004	223
UT	OGDEN	0.03	0.000	264	0.01	0.000	231	0.98	0.008	122	0.96	0.008	120	3.94	0.021	191	3.84	0.020	190
UT	PARK CITY	0.14	0.001	168	0.13	0.001	161	0.32	0.003	101	0.31	0.003	99	5.72	0.015	378	1.12	0.012	90
UT	PRICE	0.00	0.000	27	0.00	0.000	0	0.04	0.000	94	0.04	0.000	95	0.17	0.001	168	0.17	0.001	170
UT	RICHFIELD	0.00	0.000	195	0.00	0.000	213	0.13	0.002	61	0.13	0.002	61	0.60	0.006	106	0.27	0.004	68
UT	RICHFIELD (DELTA)	0.02	0.000	104	0.00	0.000	111	0.02	0.000	106	0.00	0.000	152	0.03	0.000	103	0.01	0.000	101
UT	SLC METRO	1.90	0.012	160	0.49	0.005	105	2.83	0.022	127	1.42	0.015	94	5.41	0.042	128	3.91	0.034	113
UT	SMITHFIELD	0.00	0.000	153	0.00	0.000	120	0.07	0.003	27	0.07	0.003	26	0.12	0.003	40	0.12	0.003	40
UT	TOOELE	0.19	0.002	105	0.05	0.001	61	0.82	0.007	114	0.69	0.006	109	0.89	0.008	115	0.75	0.007	110
UT	TREMONTON	0.00	0.000	0	0.00	0.000	0	0.10	0.001	78	0.10	0.001	78	0.41	0.002	169	0.41	0.002	169
UT	VERNAL	0.00	0.000	42	0.00	0.000	48	0.00	0.000	75	0.00	0.000	76	0.14	0.004	33	0.13	0.004	32

*may include other regional major event exclusions during the same period. Operating areas are calculated by the state frozen customer count metrics.

Data as/of
4/22/2025