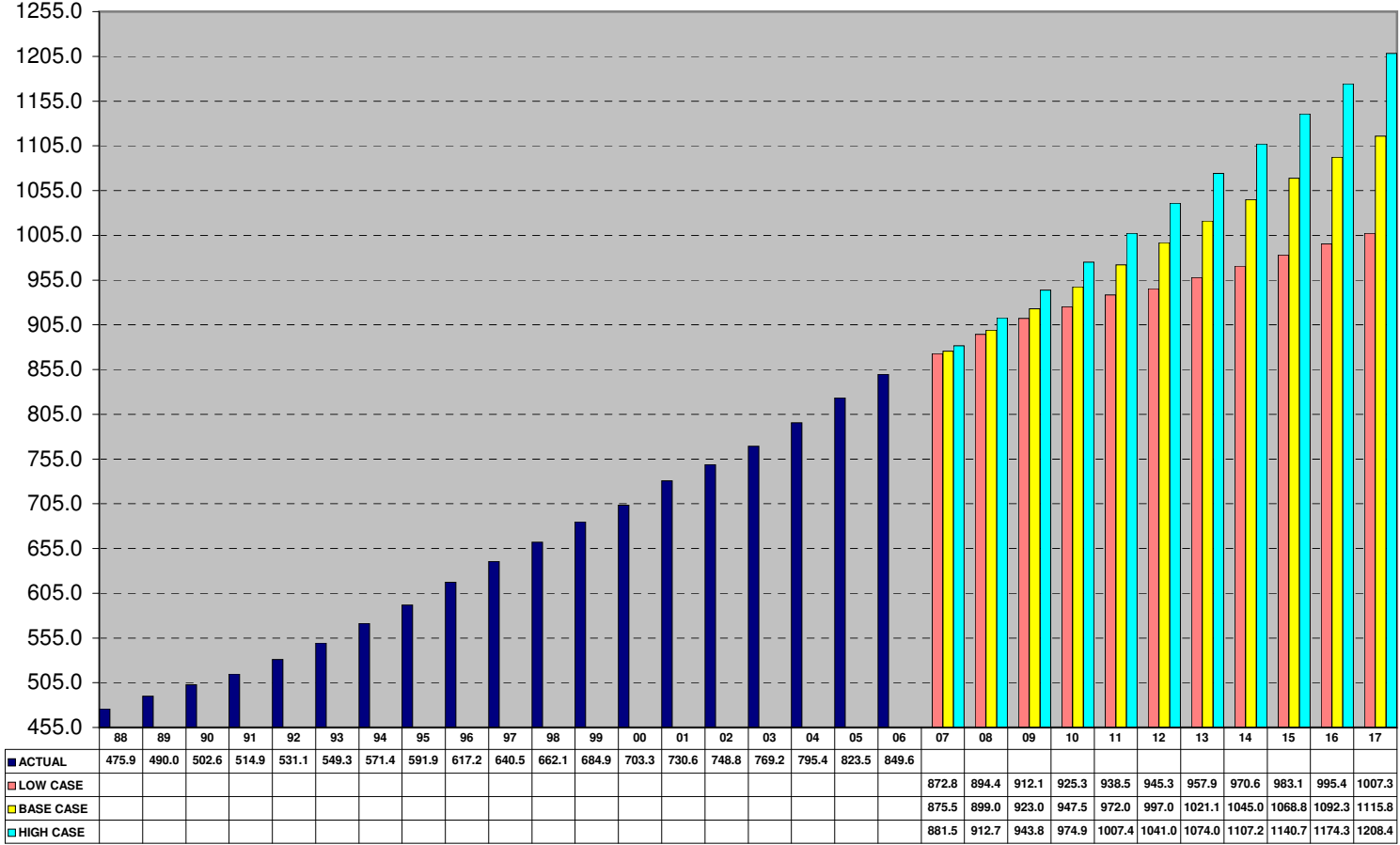


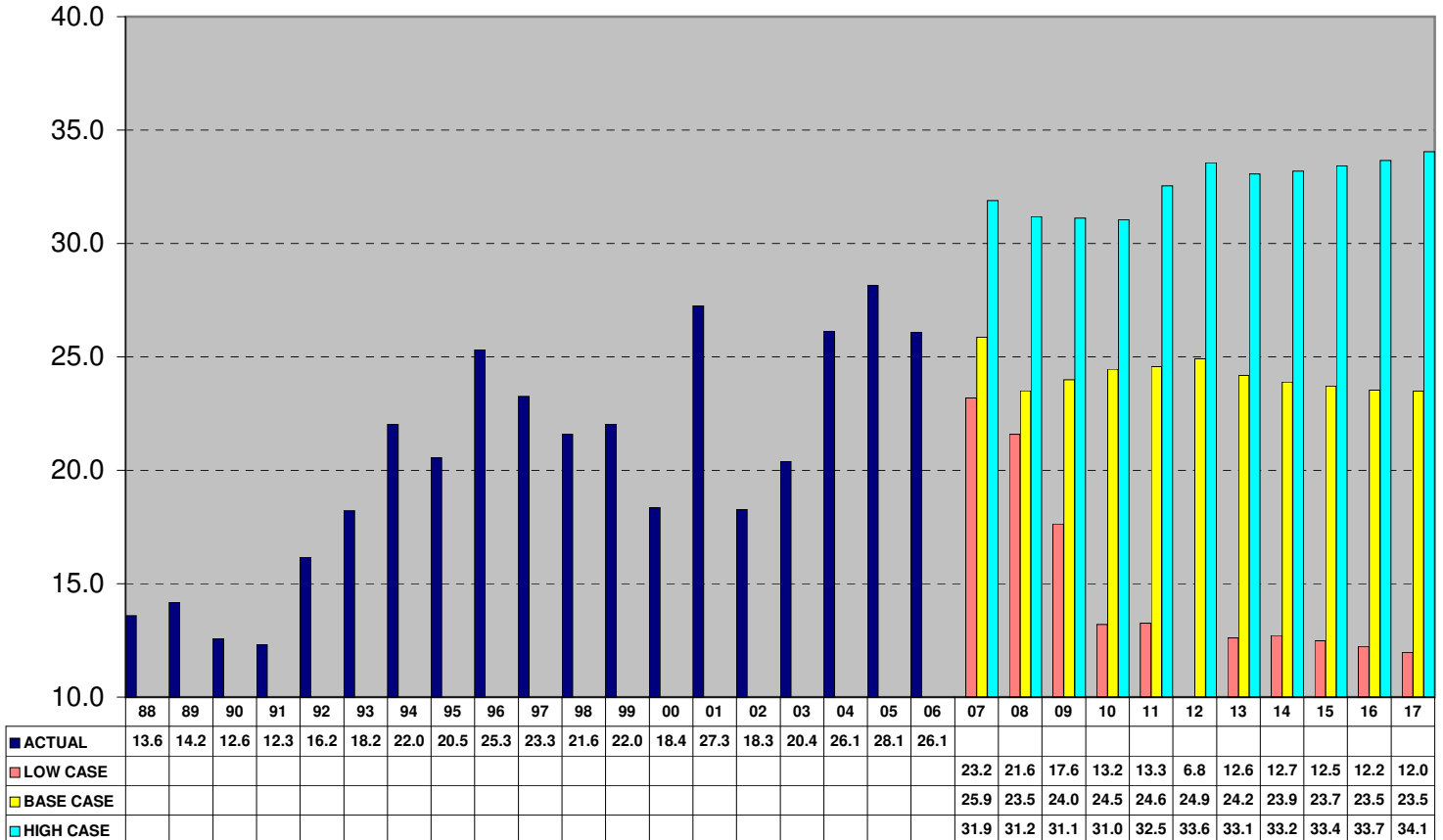
# SYSTEM GS YEAR-END CUSTOMERS

Customers (Thousands)



# SYSTEM GS YEAR-END ADDITIONS

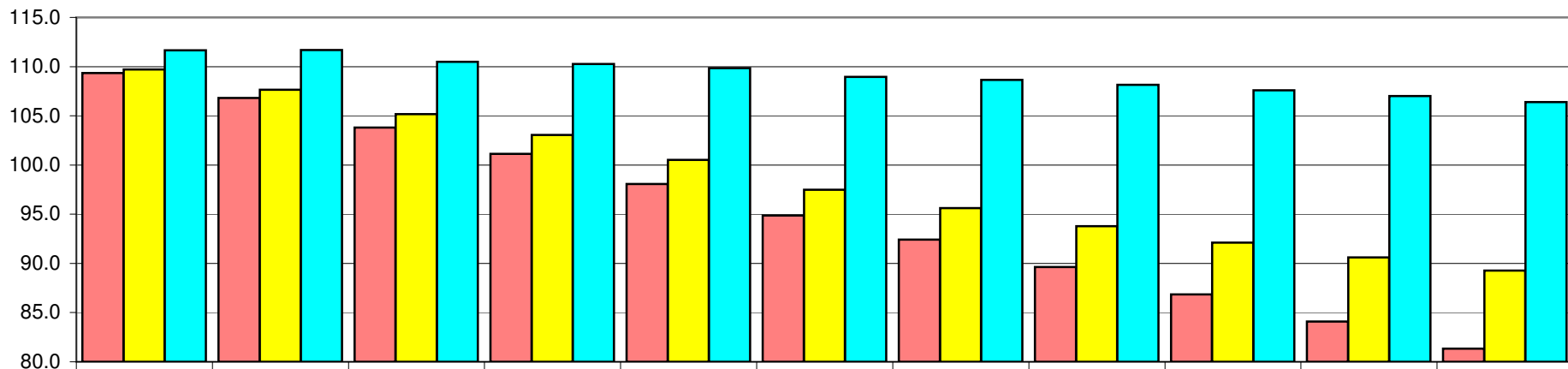
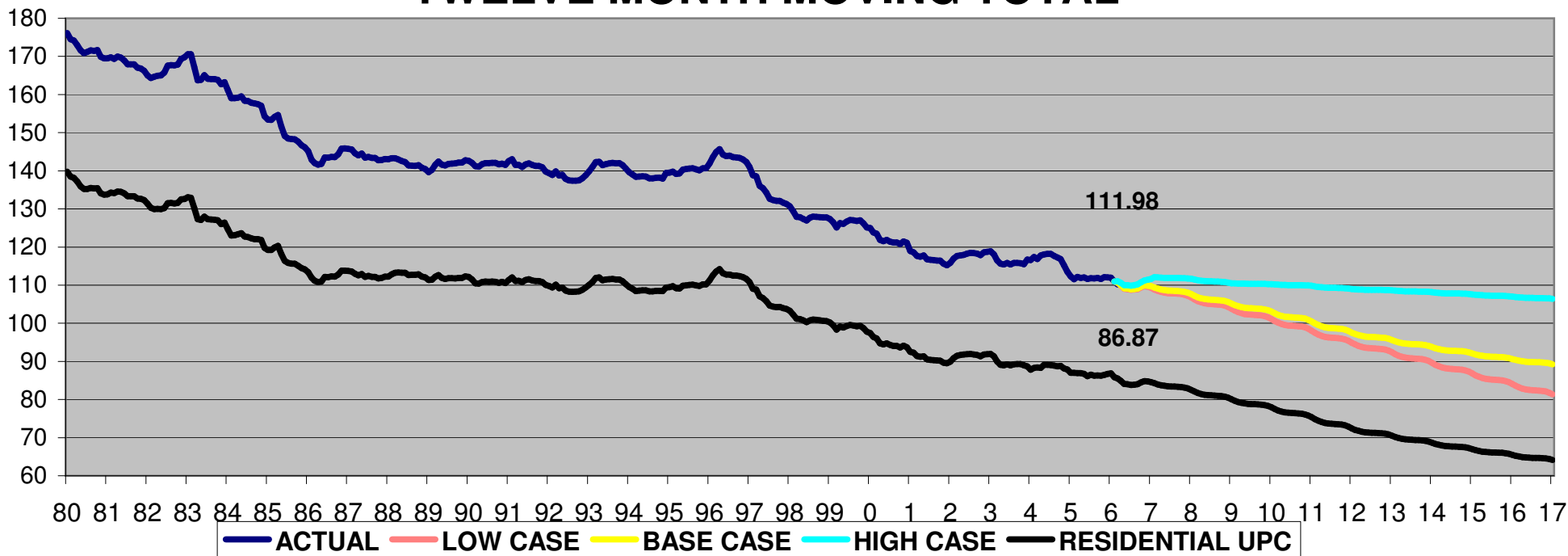
Customers (Thousands)



# UTAH GS-1 TEMP ADJ USE PER CUSTOMER (UPC)

## TWELVE MONTH MOVING TOTAL

DTH/METER

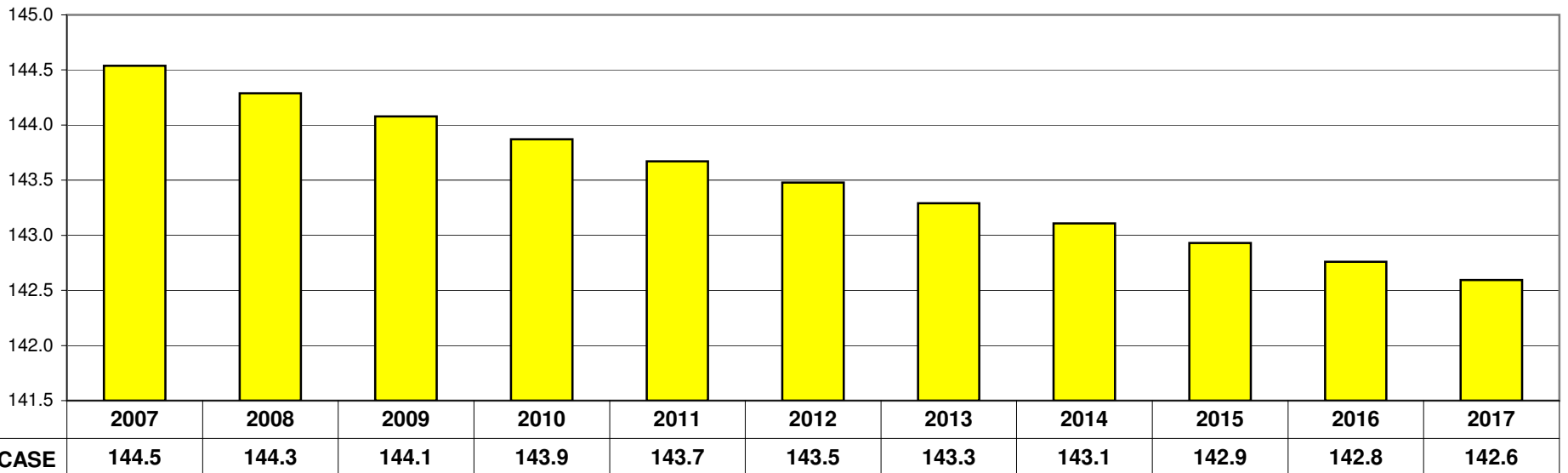
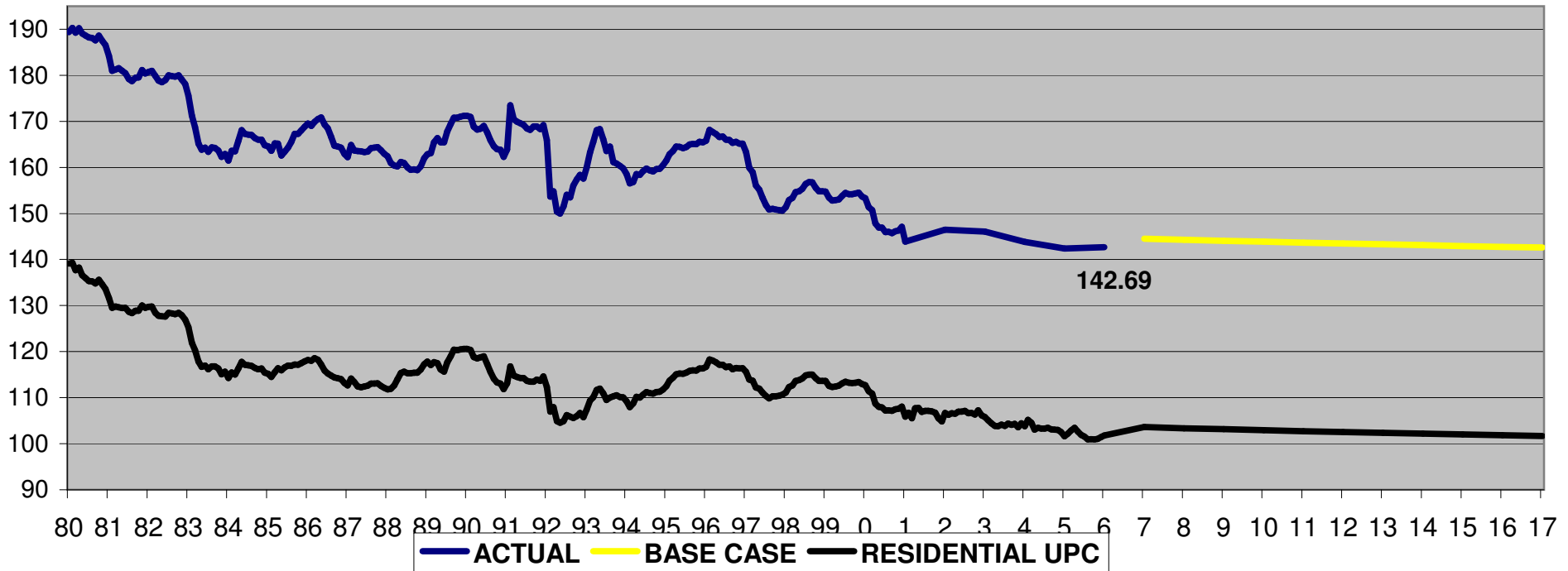


	2007	2008	2009	2010	2011	2012	2013	2014	2015	2016	2017
<b>LOW CASE</b>	109.3	106.8	103.8	101.1	98.1	94.9	92.4	89.6	86.9	84.1	81.3
<b>BASE CASE</b>	109.7	107.7	105.2	103.1	100.5	97.5	95.6	93.8	92.1	90.6	89.3
<b>HIGH CASE</b>	111.6	111.7	110.5	110.3	109.8	108.9	108.6	108.1	107.6	107.0	106.4

# WYOMING GS-1 TEMP ADJ USE PER METER

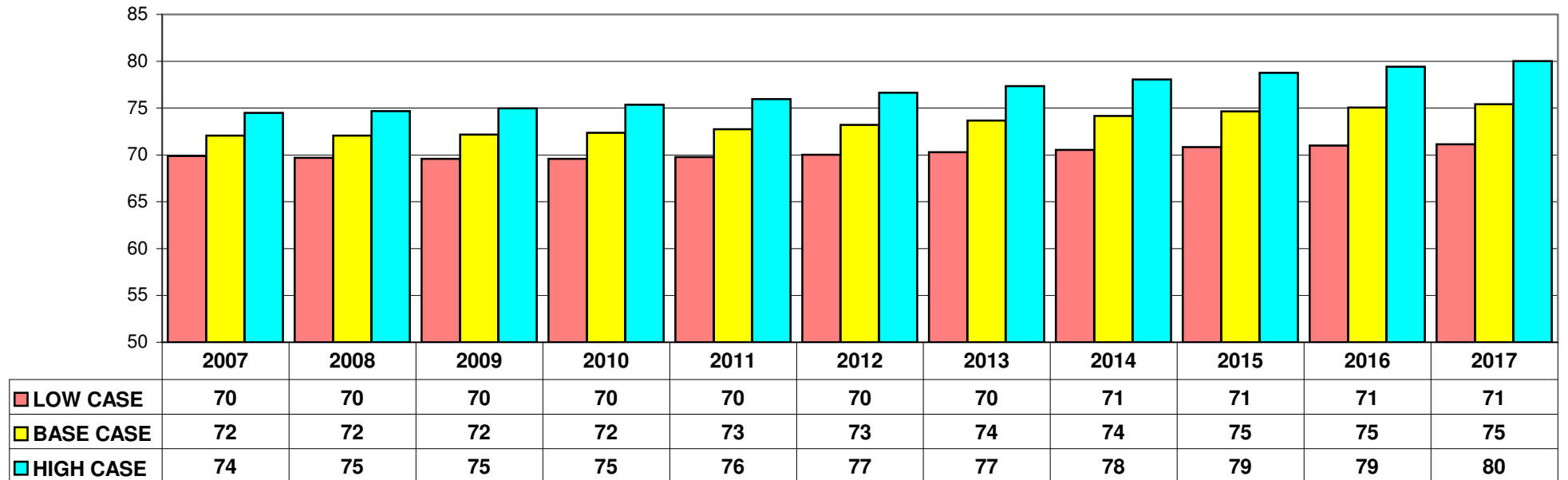
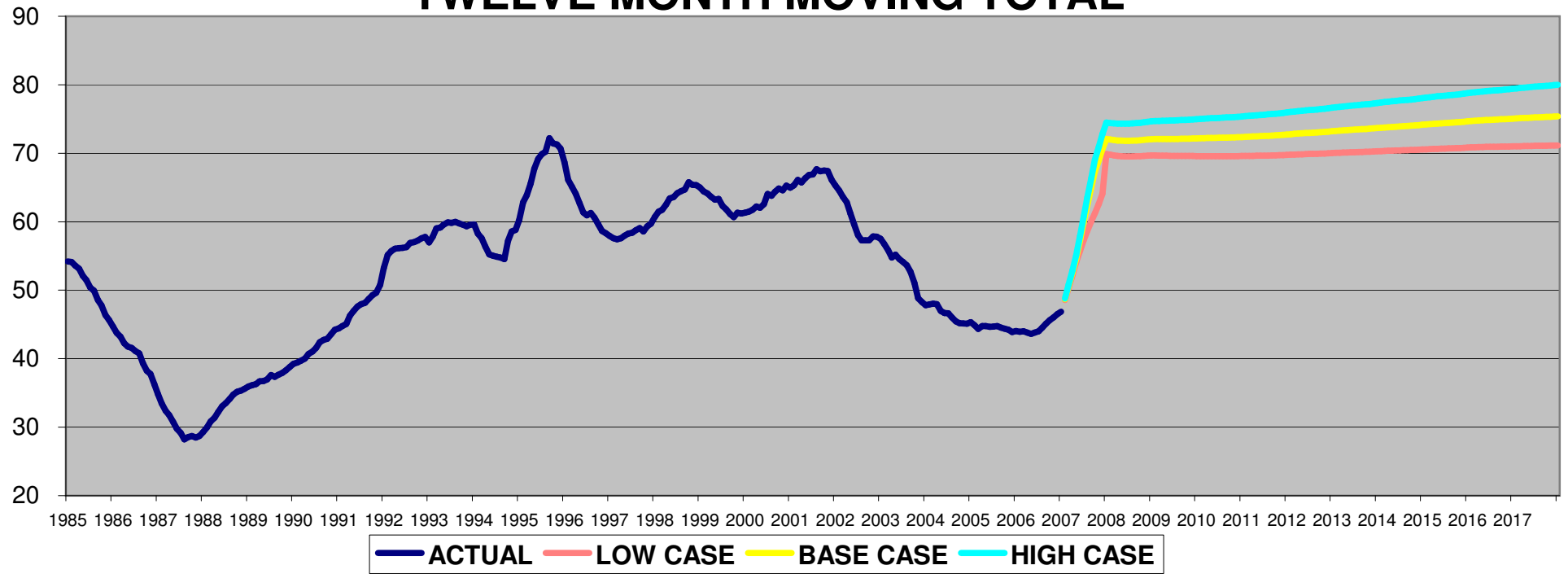
## TWELVE MONTH MOVING TOTAL

DTH/METER



# SYSTEM NON-GS DEMAND TWELVE MONTH MOVING TOTAL

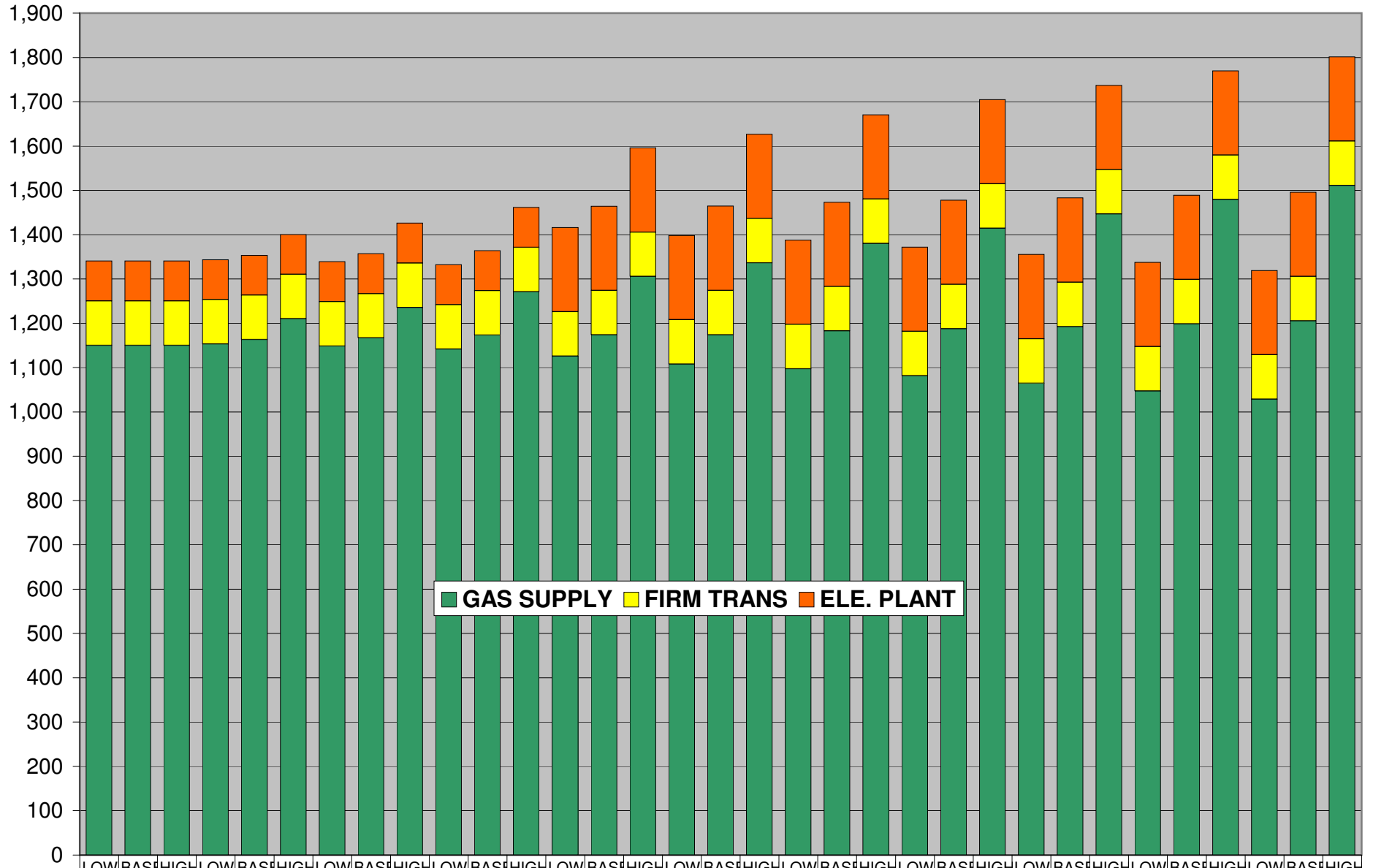
DTH (MILLIONS)



# FIRM PEAK DEMAND FORECAST

## 20-YEAR RETURN PERIOD

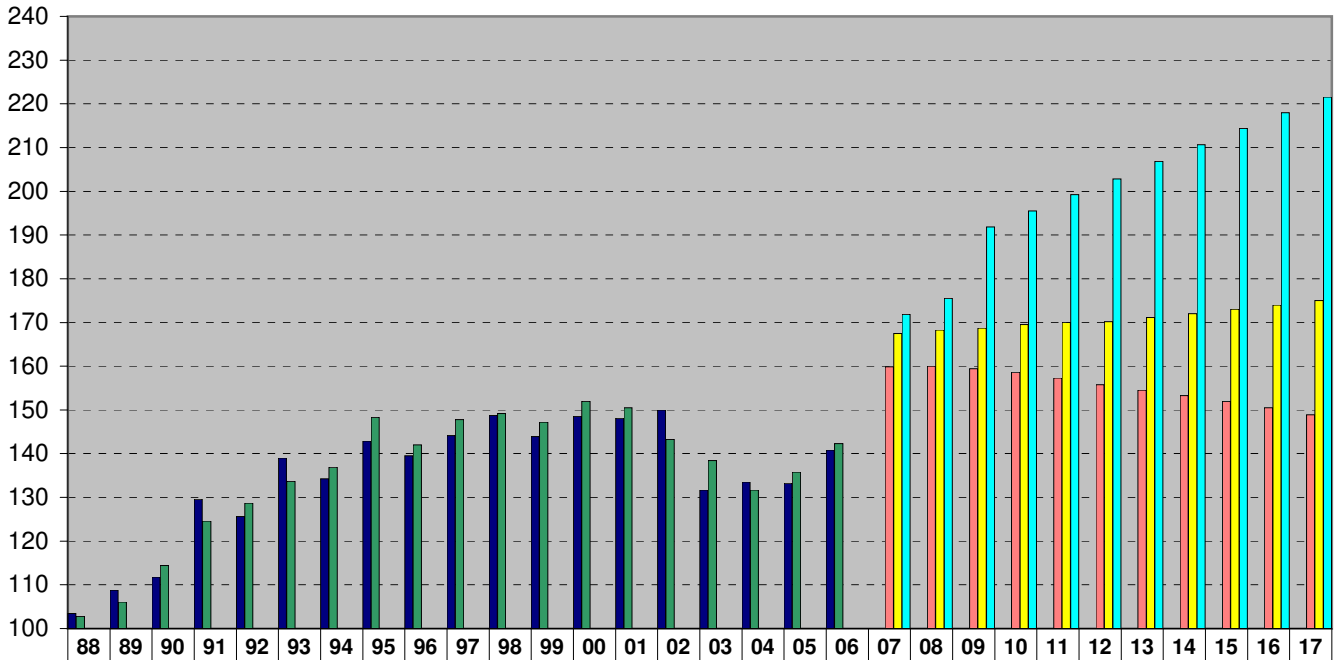
DTH/DAY (THOUSANDS)



	2007			2008			2009			2010			2011			2012			2013			2014			2015			2016			2017		
	LOW	BASE	HIGH	LOW	BASE	HIGH	LOW	BASE	HIGH	LOW	BASE	HIGH	LOW	BASE	HIGH	LOW	BASE	HIGH	LOW	BASE	HIGH	LOW	BASE	HIGH	LOW	BASE	HIGH	LOW	BASE	HIGH	LOW	BASE	HIGH
ELE. PLANT	90	90	90	90	90	90	90	90	90	90	90	90	190	190	190	190	190	190	190	190	190	190	190	190	190	190	190	190	190	190	190	190	190
FIRM TRANS	100	100	100	100	100	100	100	100	100	100	100	100	100	100	100	100	100	100	100	100	100	100	100	100	100	100	100	100	100	100	100	100	100
GAS SUPPLY	1150	1150	1150	1153	1163	1210	1149	1167	1236	1142	1174	1271	1126	1174	1306	1108	1174	1336	1097	1183	1380	1082	1188	1414	1065	1193	1447	1047	1199	1479	1029	1206	1511

# SYSTEM DTH THROUGHPUT

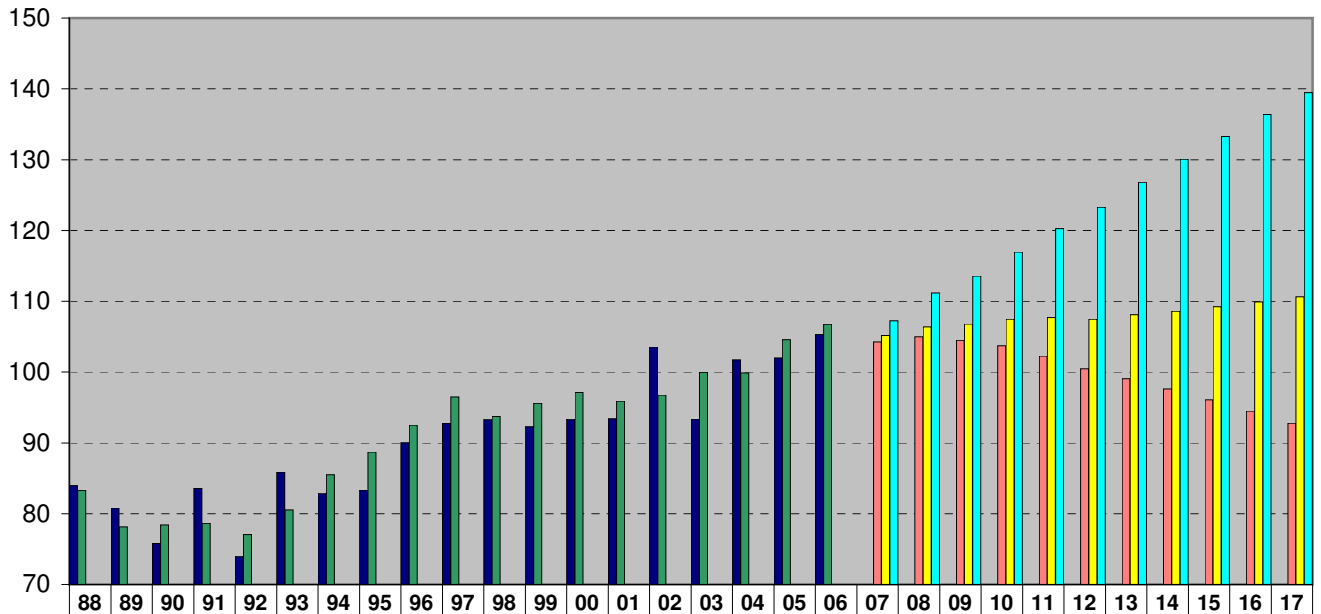
Dth (Millions)



	88	89	90	91	92	93	94	95	96	97	98	99	00	01	02	03	04	05	06	07	08	09	10	11	12	13	14	15	16	17
■ ACTUAL	103	109	112	130	126	139	134	143	140	144	149	144	149	148	150	132	134	133	141											
■ TEMP ADJUSTED	103	106	114	125	129	134	137	148	142	148	149	147	152	151	143	138	132	136	142											
■ LOW CASE																				160	160	159	159	157	156	155	153	152	151	149
■ BASE CASE																				167	168	169	170	170	170	171	172	173	174	175
■ HIGH CASE																				172	175	192	195	199	203	207	211	214	218	222

# SYSTEM DTH SALES

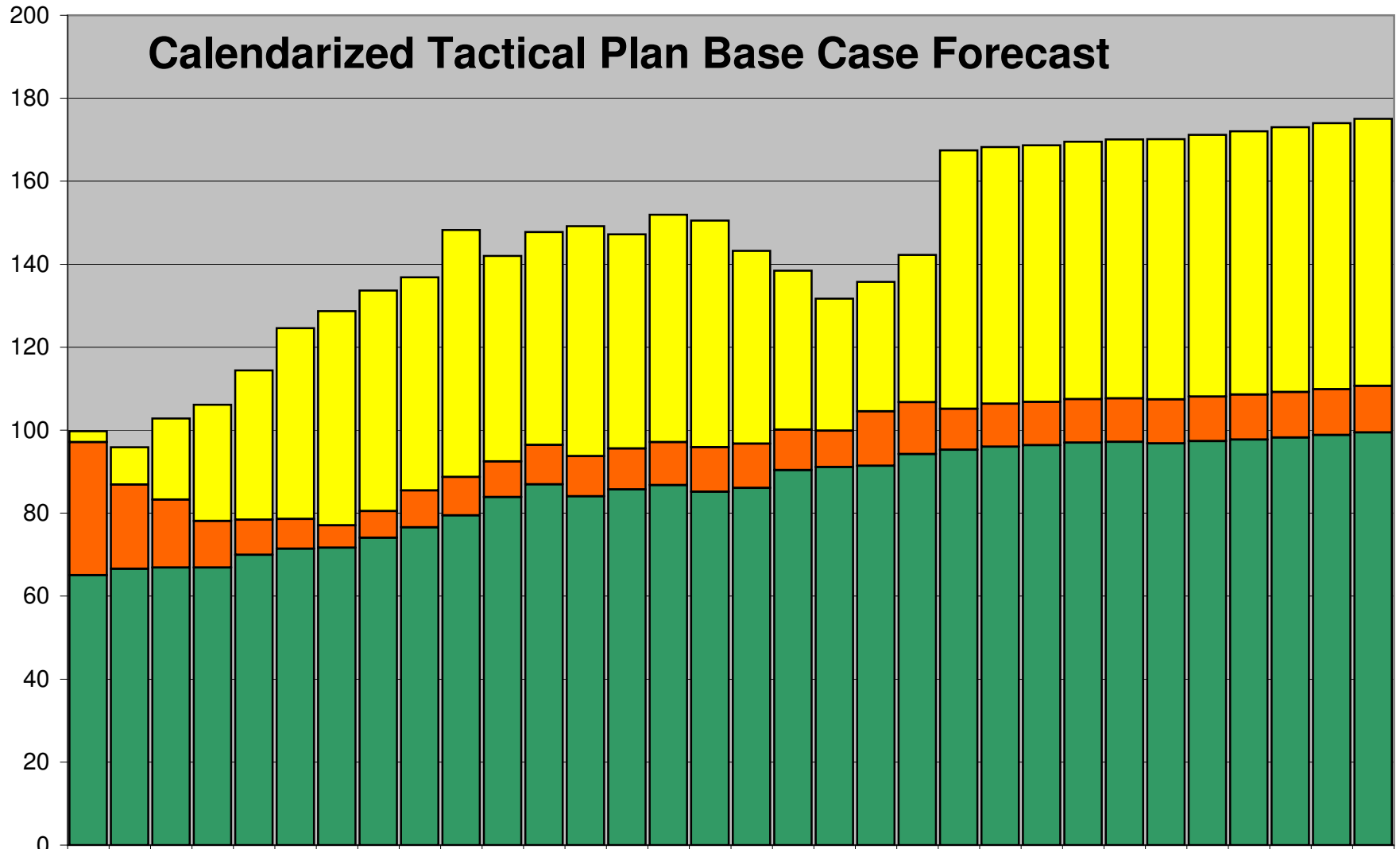
Dth (Millions)



	88	89	90	91	92	93	94	95	96	97	98	99	00	01	02	03	04	05	06	07	08	09	10	11	12	13	14	15	16	17
■ ACTUAL	84	81	76	84	74	86	83	83	90	93	93	92	93	93	104	93	102	102	105											
■ TEMP ADJUSTED	83	78	78	79	77	81	85	89	92	96	94	96	97	96	97	100	100	105	107											
■ LOW CASE																				104	105	104	104	102	100	99	98	96	94	93
■ BASE CASE																				105	106	107	107	108	107	108	109	109	110	111
■ HIGH CASE																				107	111	114	117	120	123	127	130	133	136	139

# TEMP ADJUSTED QUESTAR GAS THROUGHPUT

DTH (MILLIONS)



	86	87	88	89	90	91	92	93	94	95	96	97	98	99	00	01	02	03	04	05	06	07	08	09	10	11	12	13	14	15	16	17
■ TRANS	2.6	9	20	28	36	46	52	53	51	60	49	51	55	52	55	55	46	38	32	31	36	62	62	62	62	62	63	63	64	64	64	
■ NON-GS SALES	32	20	16	11	8.5	7.2	5.4	6.4	8.9	9.3	8.6	9.5	9.7	9.9	10	11	11	9.7	8.8	13	12	9.9	10	10	10	11	11	11	11	11	11	
■ SYSTEM GS	65	67	67	67	70	71	72	74	77	79	84	87	84	86	87	85	86	90	91	91	94	95	96	96	97	97	97	97	98	98	99	99

Exhibit 3.7