

2015 Feeder Line Replacement Budget

(A)	(B)
Feeder Line	Projected 2015 Cost
High Pressure	
1 FL6 1/	5,000,000
2 FL24 2/	49,000,000
3 FL34 3/	1,000,000
4 Total High Pressure	<u>55,000,000</u>
Intermediate High Pressure	
5 Salt Lake County Total	6,960,000
6 Weber County Total	2,650,000
Total Intermediate High Pressure	<u>9,610,000</u>
7 Pre-engineering (Future Projects)	1,490,000
8 Total Annual Budget	66,100,000

1/ This is a continuation of the FL6 replacement project that began in 2014

2/ This is a continuation of the FL24 replacement project that began in 2014

3/ This is a continuation of the FL34 replacement project that began in 2014

2015 Feederline Replacement Footages

Specific vintages from which pipe will be retired and replaced in 2015 are shown in yellow.

Row Label	1943	1946	1948	1949	1951	1953	1954	1956	1957	1958	1959	1960	1961	1962	Retirement/Replacement Footages
FL6	0	0	69,206	0	0	205	42	0	0	0	42	72	121	0	0
	1.05	0	0	0	0	0	8	0	0	0	0	0	0	0	0
	1.315	0	0	0	0	0	0	0	0	0	0	5	2	0	0
	2.375	0	0	0	3	0	0	0	0	0	0	0	0	0	0
	4.5	0	0	0	202	34	0	0	0	0	0	67	60	0	0
	6.625	0	0	0	0	0	0	0	0	0	0	0	59	0	0
	8.625	0	0	0	0	0	0	0	0	0	0	0	0	0	0
	10.75	0	0	0	0	0	0	0	0	42	0	0	0	0	0
	12.75	0	0	0	0	0	0	0	0	0	0	0	0	0	0
FL24	0	0	97,517	189	112	70	0	0	62	7	0	0	12	0	0
	1.05	0	0	0	0	0	0	0	0	0	0	0	0	0	0
	2.375	0	538	0	0	0	0	0	0	0	0	0	0	0	0
	3.5	0	21	0	0	0	0	0	6	0	0	0	0	0	0
	4.5	0	233	189	112	70	0	0	56	0	0	0	12	0	0
	6.625	0	0	0	0	0	0	0	0	0	0	0	0	0	0
	10.75	0	0	0	0	0	0	0	0	0	7	0	0	0	0
	12.75	0	0	0	0	0	0	0	0	0	0	0	0	0	0
FL34	36	12	0	0	0	0	0	0	0	0	0	0	0	84,855	0
	1.05	0	0	0	0	0	0	0	0	0	0	0	0	0	0
	1.315	0	0	0	0	0	0	0	0	0	0	0	0	14	0
	2.375	0	0	0	0	0	0	0	0	0	0	0	0	0	0
	3.5	0	0	0	0	0	0	0	0	0	0	0	0	0	0
	4.5	36	12	0	0	0	0	0	0	0	0	0	0	3	0
	6.625	0	0	0	0	0	0	0	0	0	0	0	0	168	0
	8.625	0	0	0	0	0	0	0	0	0	0	0	0	39	0
	10.75	0	0	0	0	0	0	0	0	0	0	0	0	0	0
	12.75	0	0	0	0	0	0	0	0	0	0	0	0	4	0
	16	0	0	0	0	0	0	0	0	0	0	0	0	0	45
	20	0	0	0	0	0	0	0	0	0	0	0	0	0	84,582
	24	0	0	0	0	0	0	0	0	0	0	0	0	0	650
Total														121,375	

2015 IHP Belt Line Replacement Footages
November 2014

Specific vintages from which the pipe will be retired and replaced in 2015 are shown in yellow.

Salt Lake County		Footage							Estimated 2015 Retirement/ Replacement Footages	
Size	Material	1929	1930-39	1940-49	1950-59	1960-69	1970	Total		
24"	Steel	0	0	0	0	11,612	0	11,612		
20"	Steel	0	0	5,572	0	3,013	0	8,585		
16"	Steel	63,198	0	0	0	66	33	63,297	7,000	
12"	Steel	17,750	0	0	2,100	2,686	0	22,536	3,300	
10"	Steel	3,620	3,431	7,991	22,552	743	24	38,361	8,400	
8"	Steel	2,411	0	9	14,598	15,057	0	32,075	1,700	
								Salt Lake County Footage	176,466	20,400
								Salt Lake County Miles	33.4	3.9

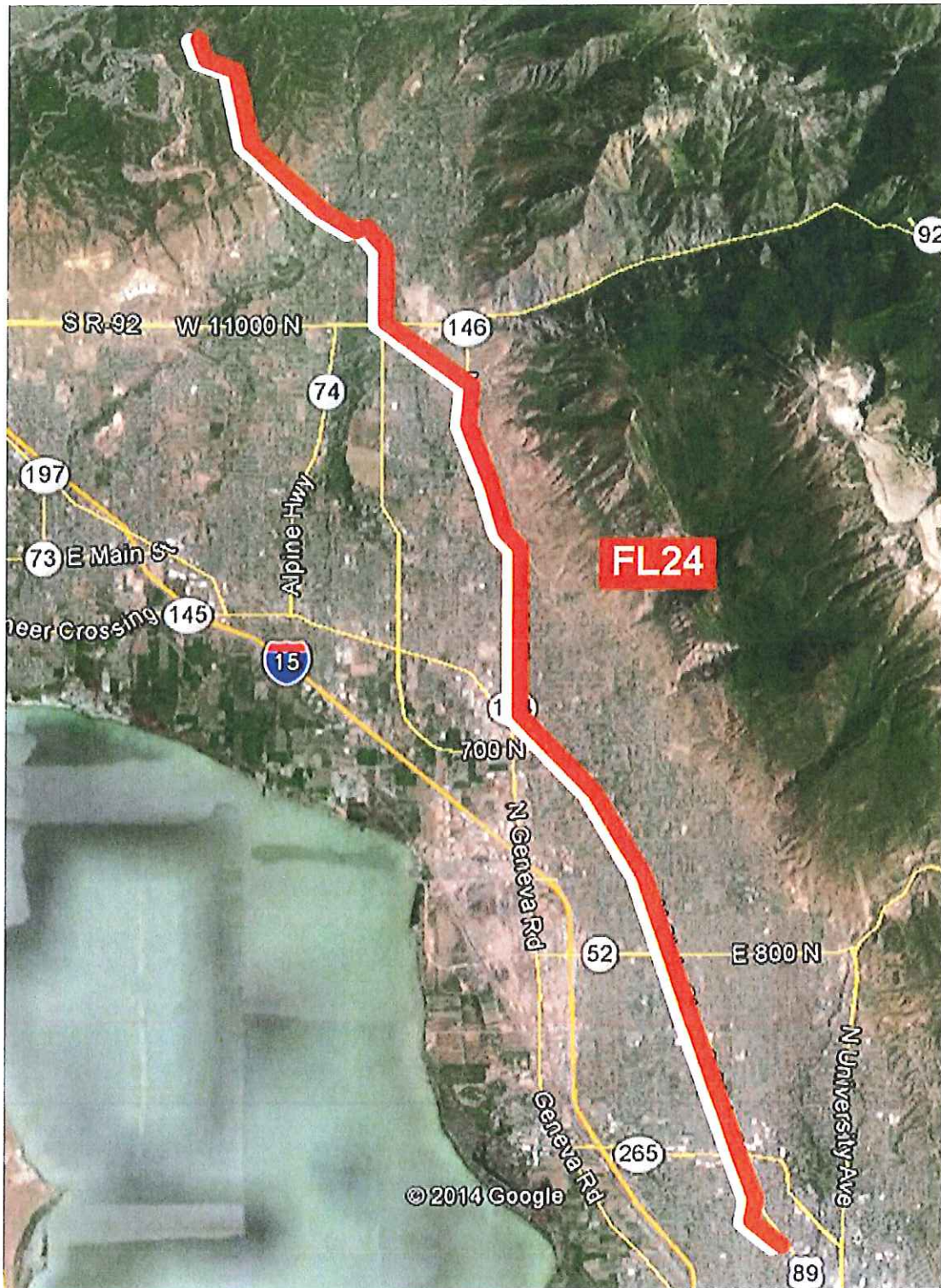
Weber County		Footage							Estimated 2015 Retirement/ Replacement Footages	
Size	Material	1929	1930-39	1940-49	1950-59	1960-69	1970	Total		
16"	Steel	0	0	0	0	17	0	17		
14"	Steel	0	0	0	22,227	36	0	22,263	4,100	
10"	Steel	1,230	5,838	0	17,257	2,439	0	26,764	4,400	
8"	Steel	2,093	0	4,024	19,620	15,478	0	41,215	4,300	
								Weber County Footage	90,259	12,800
								Weber County Miles	17.1	2.4

	Footage	Miles	Estimated 2015 Retirement/ Replacement Footages
Salt Lake County	176,466	33.4	Footage
			33,200
Weber County	90,259	17.1	Mileage
			6.3

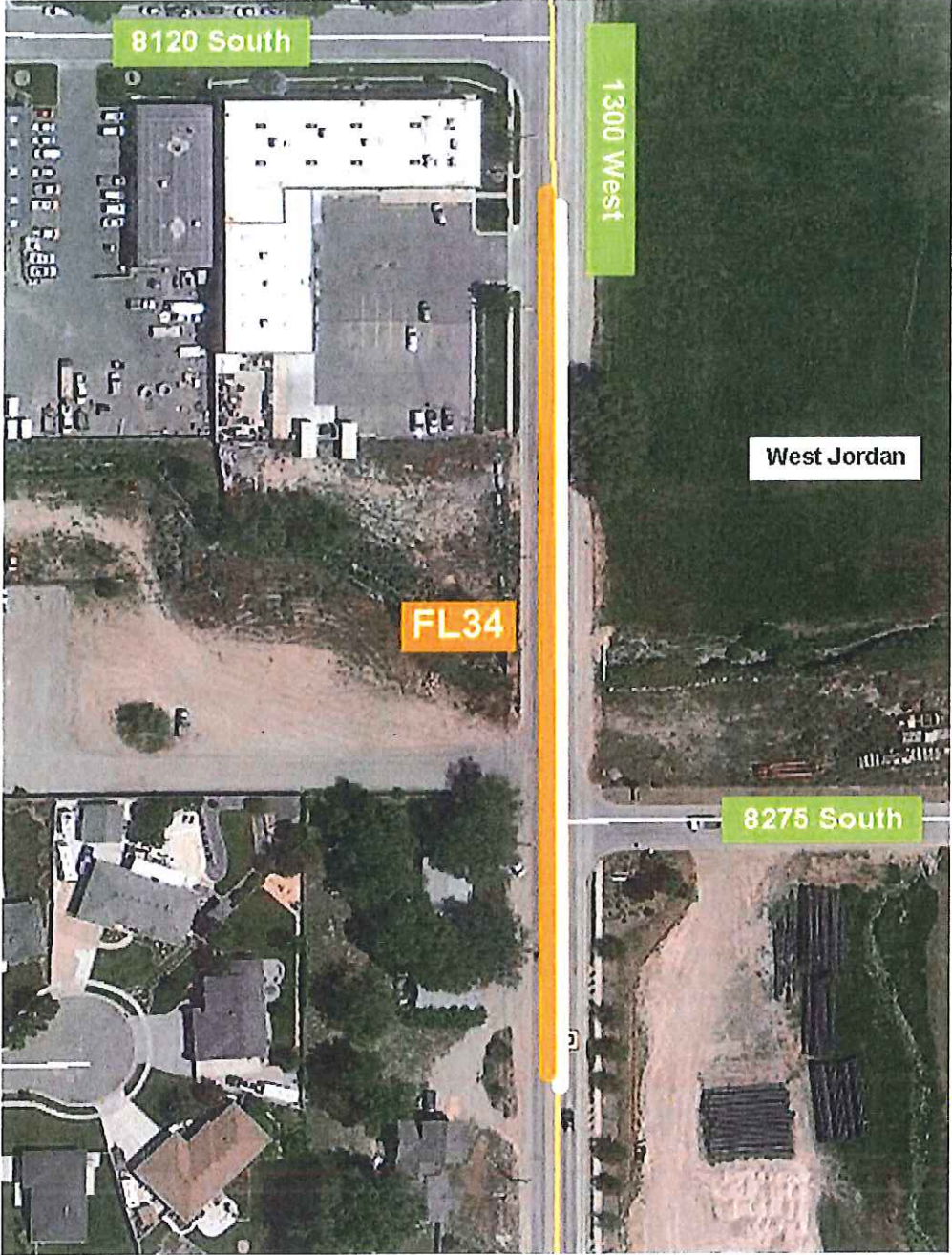
FL6: 33 South to Utah County



FL24



FL34: Bingham Creek



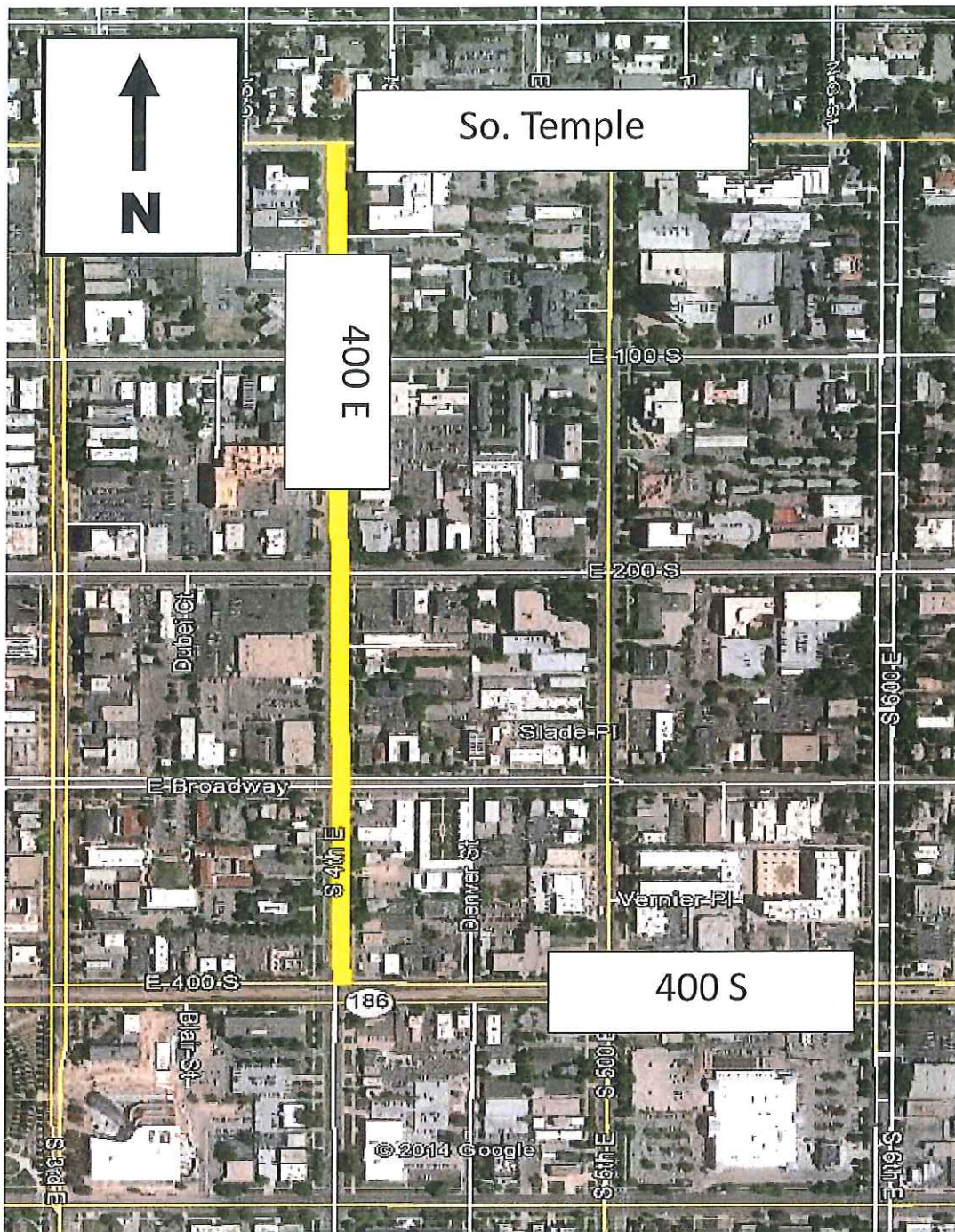
**Salt Lake County Belt Line Replacement - 5,000 ft.
1700 S between State Street and 700 E in Salt Lake City**

- 1,700' of 10" steel installed in 1953
- 3,300' of 12" steel installed in 1929



Salt Lake County Belt Line Replacement - 3,000 ft.
400 E between South Temple and 400 S in Salt Lake City

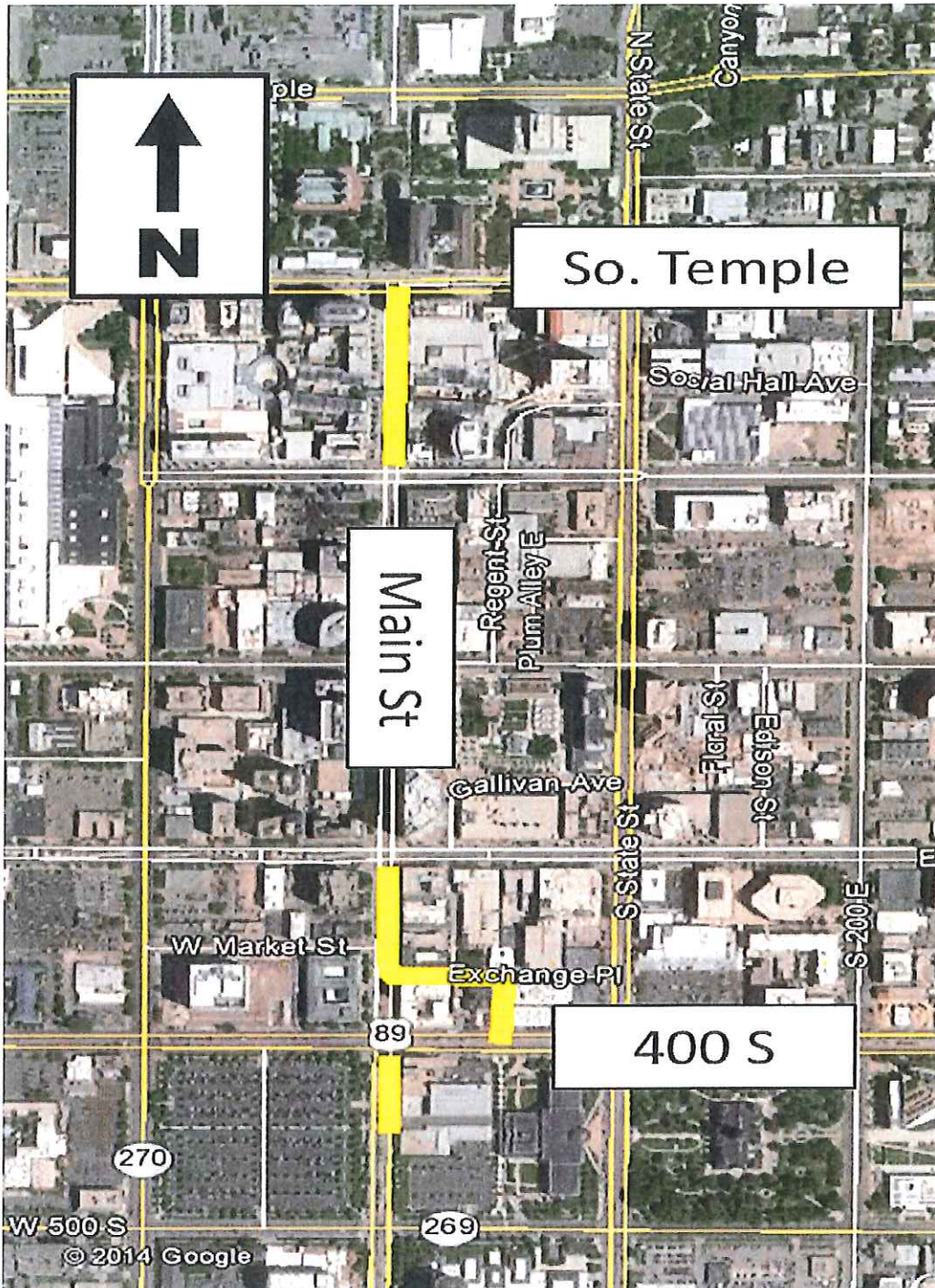
- 3,000' of 10" steel installed in 1953



Salt Lake County Belt Line Replacement - 2,000 ft.
Main St. between South Temple and 100 S in Salt Lake City
Main St. between 300 S and 600 S in Salt Lake City

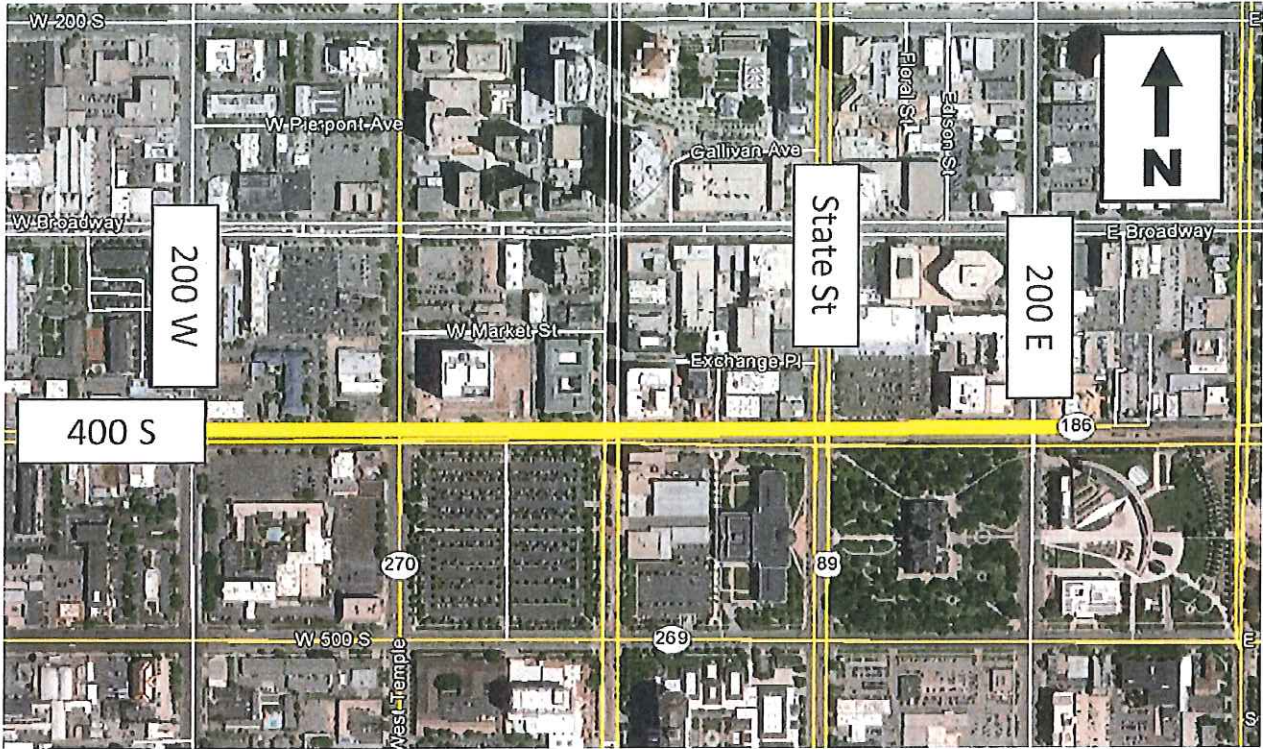
- 1,300 ' of 10" steel installed in 1929

- 700 ' of 10" steel installed in 1953



**Salt Lake County Belt Line Replacement - 3,400 ft.
400 S between 200 W and 200 E in Salt Lake City**

- 1,700' of 10" steel installed in 1953
- 1,700' of 10" steel installed in 1954

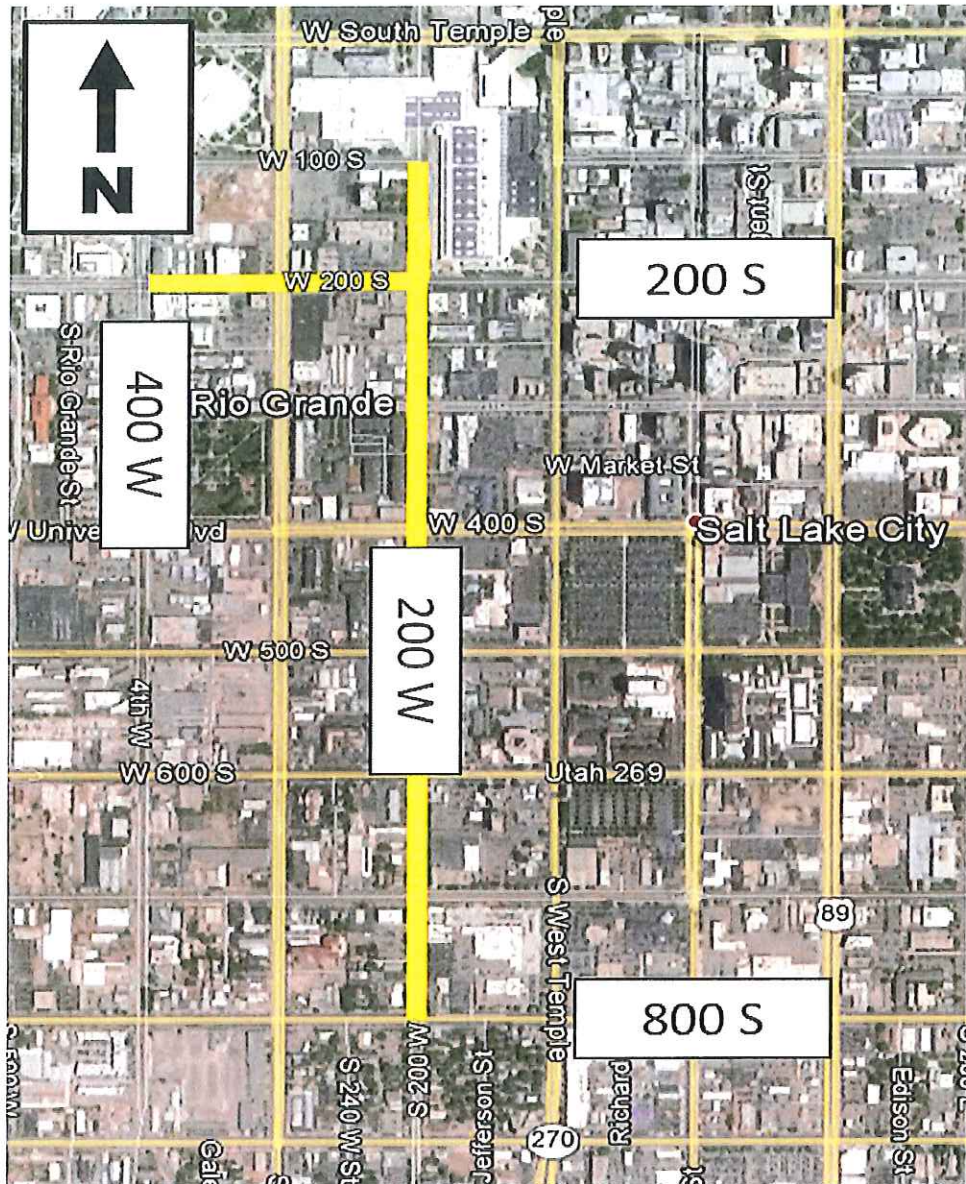


Salt Lake County Belt Line Replacement - 7,000 ft.

200 W between 100 S and 800 S in Salt Lake City

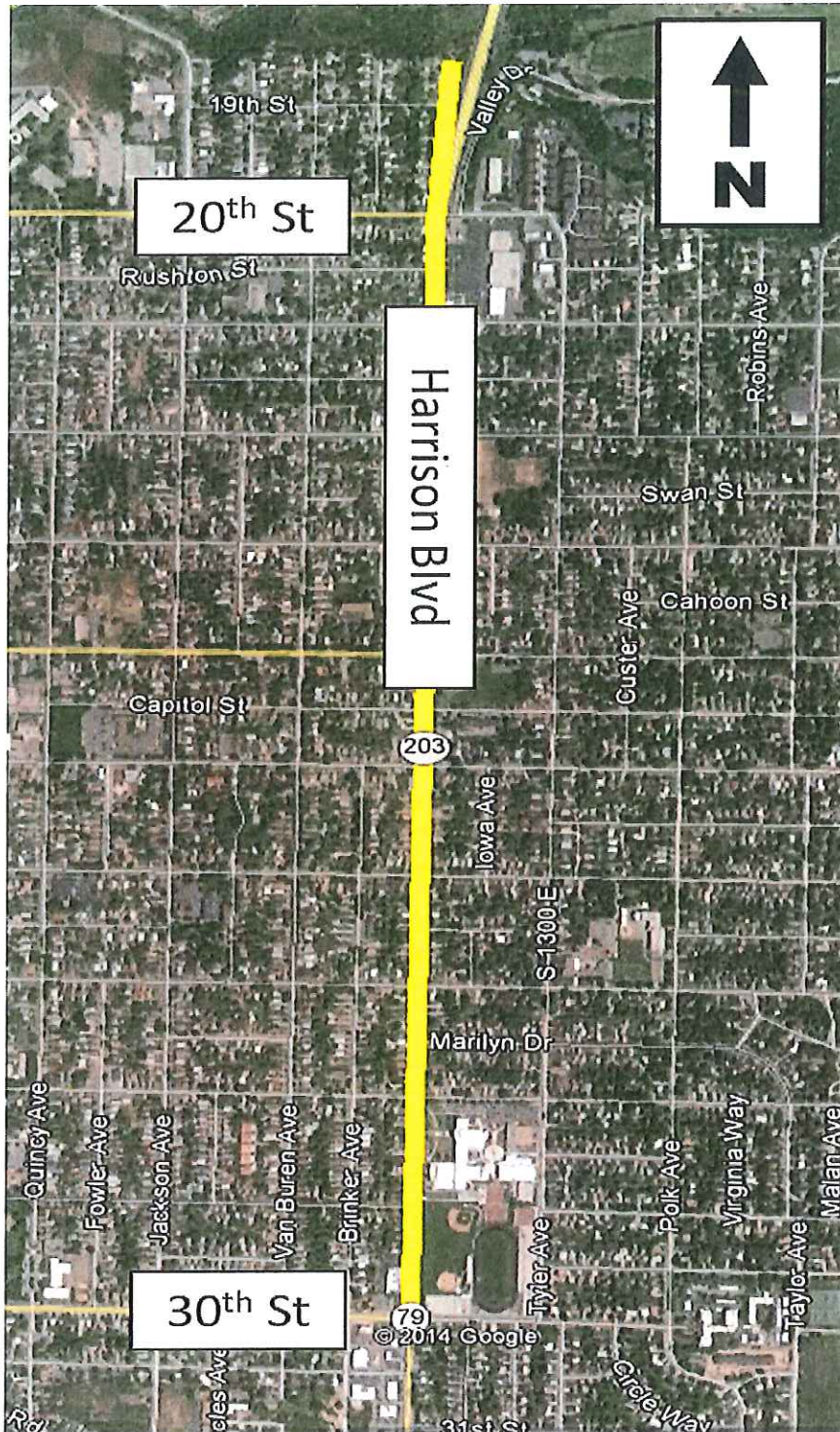
200 S between 200 W and 400 W in Salt Lake City

- 7,000' of 16" steel installed in 1929



**Weber County Belt Line Replacement - 8,700 ft.
Harrison Blvd between 19th St and 30th St in Ogden**

- 3,100' of 8" steel installed in 1955
- 1,200' of 8" steel installed in 1956
- 4,400' of 10" steel installed in 1955



Weber County Belt Line Replacement - 4,100 ft.
Harrison Blvd between 5800 S and 6000 S in South Ogden

- 4,100' of 14" steel installed in 1956

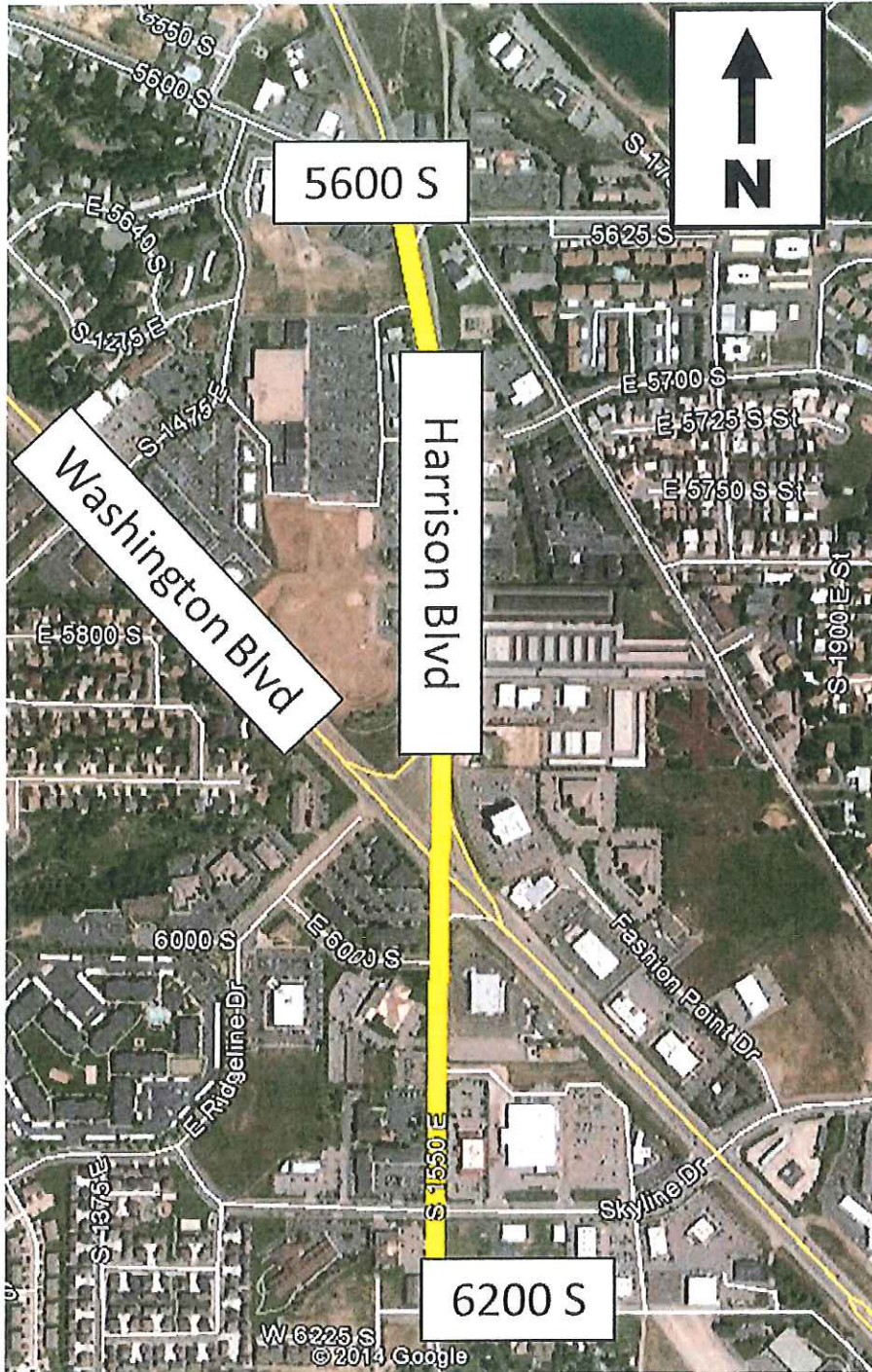


TABLE 2
Summary of the US Economy

	2007	2008	2009	2010	2011	2012	2013	2014	2015	2016	2017	2018	2019
Composition of Real GDP, Percent Change													
Gross Domestic Product	1.8	-0.3	-2.8	2.5	1.6	2.3	2.2	2.3	2.7	2.9	3.1	2.8	2.7
Final Sales of Domestic Product	2.0	0.2	-2.0	1.1	1.7	2.2	2.2	2.2	2.9	2.9	3.2	2.8	2.7
Total Consumption	2.2	-0.3	-1.6	1.9	2.3	1.8	2.4	2.3	2.8	3.1	3.2	2.8	2.6
Durables	4.6	-5.1	-5.5	6.1	6.1	7.3	6.7	6.7	6.1	6.2	6.5	5.2	4.6
Nondurables	1.7	-1.1	-1.8	2.2	1.8	0.7	1.9	1.7	2.7	3.0	2.7	2.4	2.3
Services	2.0	0.8	-0.9	1.2	1.8	1.3	1.9	1.8	2.3	2.7	2.8	2.6	2.4
Nonresidential Fixed Investment	5.9	-0.7	-15.6	2.5	7.7	7.2	3.0	6.2	5.5	5.0	6.0	4.9	3.8
Equipment	3.2	-6.9	-22.9	15.9	13.6	6.8	4.6	6.7	7.1	6.2	6.0	4.6	3.9
Information Processing Equipment	11.5	0.4	-8.9	9.9	1.6	3.2	3.0	4.8	12.2	10.6	7.1	6.1	5.7
Computers & Peripherals	13.1	5.9	-0.4	10.3	-2.0	4.7	-0.2	-1.5	9.0	9.8	8.3	8.0	7.7
Communications Equipment	12.9	-4.9	-13.3	13.6	1.7	11.4	8.0	5.0	12.9	11.1	6.9	4.8	5.2
Industrial Equipment	3.1	-4.8	-22.2	-0.5	21.1	3.8	3.9	12.0	7.0	4.0	6.4	2.9	0.9
Transportation equipment	-4.2	-23.0	-55.0	94.0	33.7	18.9	6.2	9.8	-0.5	-1.4	1.0	3.4	3.5
Aircraft	28.3	-0.7	-41.0	24.7	26.5	11.0	-1.1	-0.9	2.3	5.9	6.1	4.6	4.5
Other Equipment	-1.2	-4.8	-19.8	8.5	10.9	4.0	5.6	1.3	9.0	10.1	8.7	5.4	4.9
Intellectual Property Products	4.8	3.0	-1.4	1.9	3.5	3.9	3.4	4.1	5.1	4.3	4.3	3.8	3.7
Structures	12.7	6.1	-18.9	-16.4	2.3	13.1	-0.5	7.8	3.0	3.6	8.1	7.0	3.7
Commercial & Health Care	10.0	-3.7	-30.7	-24.9	-0.5	8.5	3.4	5.8	11.0	18.9	13.2	8.0	5.2
Manufacturing	18.2	24.8	4.6	-27.5	-4.2	14.8	-1.3	11.2	5.5	-2.2	4.4	6.8	3.9
Power & Communication	39.3	9.9	1.4	-16.1	-7.8	21.0	-7.6	14.6	-3.1	-11.4	4.7	6.4	0.6
Mining & Petroleum	-1.6	7.3	-28.6	17.1	26.4	12.3	0.5	7.3	-1.3	-1.0	6.1	6.5	3.0
Other	15.1	12.7	-18.3	-26.7	-9.4	9.5	3.1	-0.2	6.7	12.5	9.1	6.7	5.3
Residential Fixed Investment	-18.8	-24.0	-21.2	-2.5	0.5	13.5	11.9	3.1	11.6	10.3	7.0	1.6	1.0
Exports	9.3	5.7	-8.8	11.9	6.9	3.3	3.0	3.1	3.6	4.2	5.5	6.0	6.2
Imports	2.5	-2.6	-13.7	12.7	5.5	2.3	1.1	3.4	4.2	5.6	5.4	5.0	3.7
Federal Government	1.7	6.8	5.7	4.3	-2.7	-1.8	-5.7	-2.5	-0.7	-0.9	-0.6	-0.5	-0.3
State & Local Government	1.5	0.3	1.6	-2.7	-3.3	-1.2	0.5	0.9	1.2	1.0	1.4	1.4	1.2
Billions of Dollars													
Real GDP	14873.8	14830.4	14418.8	14783.8	15020.6	15369.2	15710.3	16069.3	16509.3	16984.8	17519.1	18001.6	18482.7
Nominal GDP	14477.6	14718.6	14418.7	14984.4	15517.9	16163.2	16768.1	17422.5	18204.9	19055.6	20015.1	20953.5	21930.7
Prices & Wages, Percent Change													
GDP Deflator	2.7	1.9	0.8	1.2	2.1	1.8	1.5	1.6	1.7	1.7	1.8	1.9	1.9
Consumer Prices	2.9	3.8	-0.3	1.6	3.1	2.1	1.5	1.8	1.4	1.6	2.0	2.1	2.1
Producer Prices, Finished Goods	3.9	6.4	-2.6	4.2	6.0	1.9	1.2	2.1	0.5	0.8	1.7	2.1	2.1
Employment Cost Index - Total Comp.	3.1	2.9	1.4	1.9	2.1	2.0	1.9	2.0	2.5	3.0	3.2	3.3	3.4
Other Key Measures													
Brent Crude, Spot Price (\$/bbl)	72.68	97.94	61.57	79.84	110.95	111.78	108.75	105.35	103.75	101.50	103.30	106.78	111.45
Productivity (%ch.)	1.6	0.8	3.2	3.3	0.1	1.0	0.9	0.7	1.6	2.2	2.3	2.1	2.2
Total Industrial Production (%ch.)	2.5	-3.4	-11.3	5.7	3.3	3.8	2.9	3.9	2.8	3.6	3.4	2.5	2.3
Factory Operating Rate	78.7	74.6	65.6	71.1	73.9	75.5	76.1	77.1	77.2	77.4	77.4	76.7	76.2
Nonfarm Inven. Chg. (Bil. 2009 \$)	36.5	-35.0	-146.0	65.9	36.6	65.9	55.2	65.9	47.1	52.4	48.1	43.5	37.9
Consumer Sentiment Index	85.6	63.8	66.3	71.8	67.4	76.5	79.2	83.4	90.8	90.4	89.1	88.8	88.5
Light Vehicle Sales (Mil. units)	16.09	13.19	10.40	11.55	12.74	14.43	15.52	16.38	16.69	17.04	17.29	17.14	17.01
Housing Starts (Mil. units)	1.342	0.900	0.554	0.586	0.612	0.784	0.930	0.994	1.194	1.356	1.492	1.522	1.548
Exist. House Sales (Total, Mil. units)	5.041	4.106	4.329	4.183	4.277	4.659	5.073	4.960	5.502	5.705	5.439	5.378	5.502
Unemployment Rate (%)	4.6	5.8	9.3	9.6	8.9	8.1	7.4	6.2	5.7	5.5	5.3	5.2	5.1
Payroll Employment (%ch.)	1.1	-0.6	-4.3	-0.7	1.2	1.7	1.7	1.8	1.8	1.5	1.3	1.0	0.9
Federal Surplus (Unified, FY, bil. \$)	-161.5	-454.8	-1415.7	-1294.2	-1296.8	-1089.2	-680.2	-508.5	-475.1	-442.9	-487.3	-541.0	-570.6
Current Account Balance (Bil. \$)	-718.6	-686.6	-380.8	-443.9	-459.3	-460.8	-400.3	-388.9	-359.1	-380.6	-431.8	-450.0	-436.2
Financial Markets, NSA, Quarter Average													
Federal Funds Rate (%)	5.02	1.93	0.16	0.18	0.10	0.14	0.11	0.09	0.44	1.56	3.33	3.75	3.75
3-Month Treasury Bill Rate (%)	4.35	1.37	0.15	0.14	0.05	0.09	0.06	0.04	0.45	1.59	3.20	3.51	3.51
10-Year Treasury Note Yield (%)	4.63	3.67	3.26	3.21	2.79	1.80	2.35	2.63	3.18	3.64	4.21	4.36	4.36
30-Year Fixed Mortgage Rate (%)	6.34	6.04	5.04	4.69	4.46	3.66	3.98	4.25	4.86	5.48	6.10	6.23	6.23
S&P 500 Stock Index	1477	1221	947	1139	1269	1380	1643	1930	2043	2128	2195	2263	2340
(Percent change)	12.7	-17.3	-22.5	20.3	11.4	8.7	19.1	17.5	5.8	4.2	3.1	3.1	3.4
Exchange Rate, Major Trading Partners	1.004	0.959	1.000	0.970	0.912	0.946	0.979	0.999	1.033	1.024	1.019	1.016	1.013
(Percent change)	-5.6	-4.5	4.3	-3.0	-5.9	3.7	3.4	2.1	3.4	-0.8	-0.6	-0.2	-0.3
Incomes													
Personal Income (% ch.)	5.3	3.6	-2.8	2.8	6.2	5.2	2.0	4.2	4.6	5.1	5.7	5.2	5.0
Real Disposable Income (%ch.)	2.1	1.5	-0.4	1.0	2.5	3.0	-0.2	2.6	2.8	3.6	4.0	3.4	3.1
Saving Rate (%)	3.0	5.0	6.2	5.6	6.0	7.2	4.9	5.2	5.1	5.5	6.3	6.7	7.1
After-Tax Profits (Billions of \$)	1303	1073	1203	1470	1428	1681	1761	1859	1916	1916	1870	1856	1880
(Percent change)	-5.5	-17.6	12.1	22.2	-2.9	17.8	4.7	5.5	3.1	0.0	-2.4	-0.8	1.3