

Green River Expansion Technical Conference

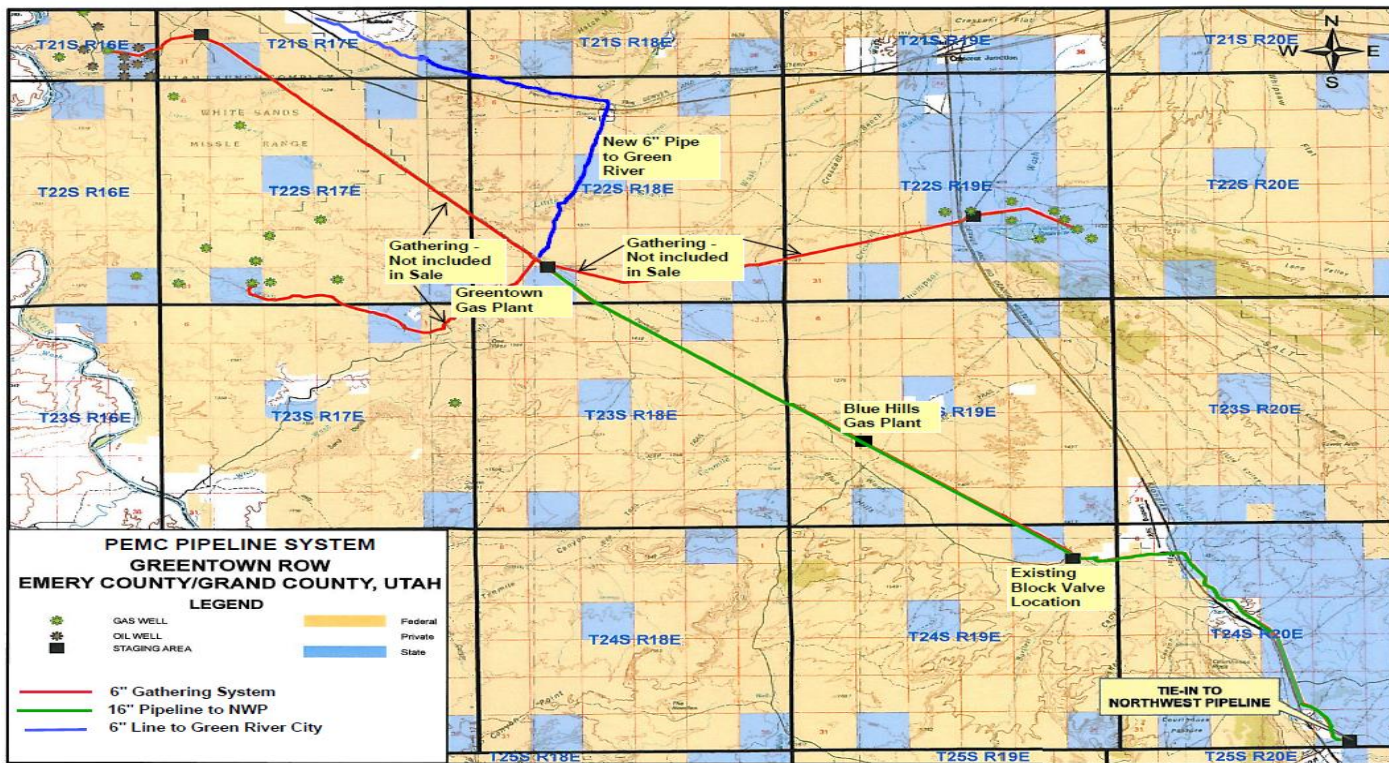
Docket No. 21-057-12



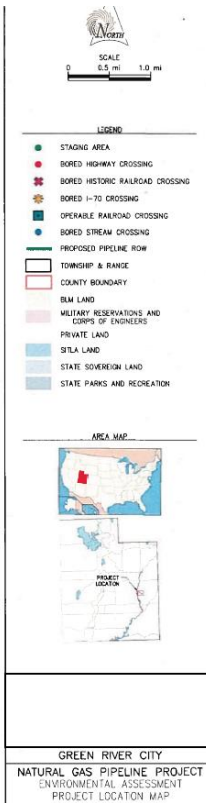
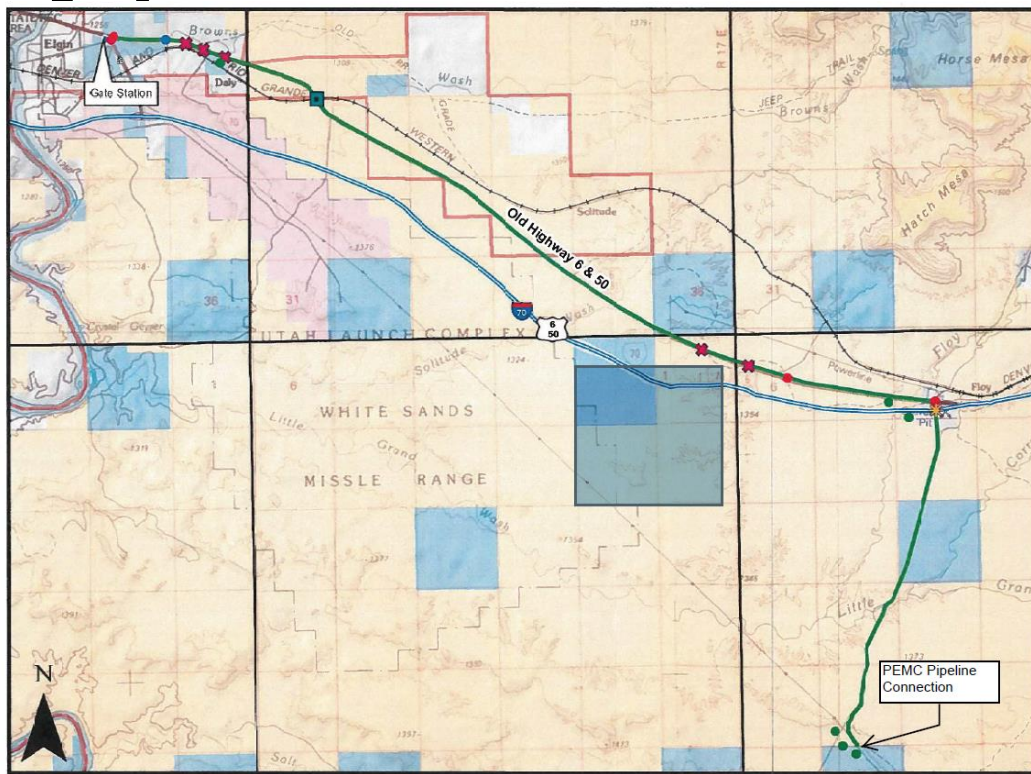
Scope

- 483 Potential customers
 - Based on water connections in the city
- Purchase of PEMC Pipeline
- 17 miles of high-pressure pipe
- 2 regulator stations
- 73,000 feet of IHP main
- 24,000 feet of IHP service lines

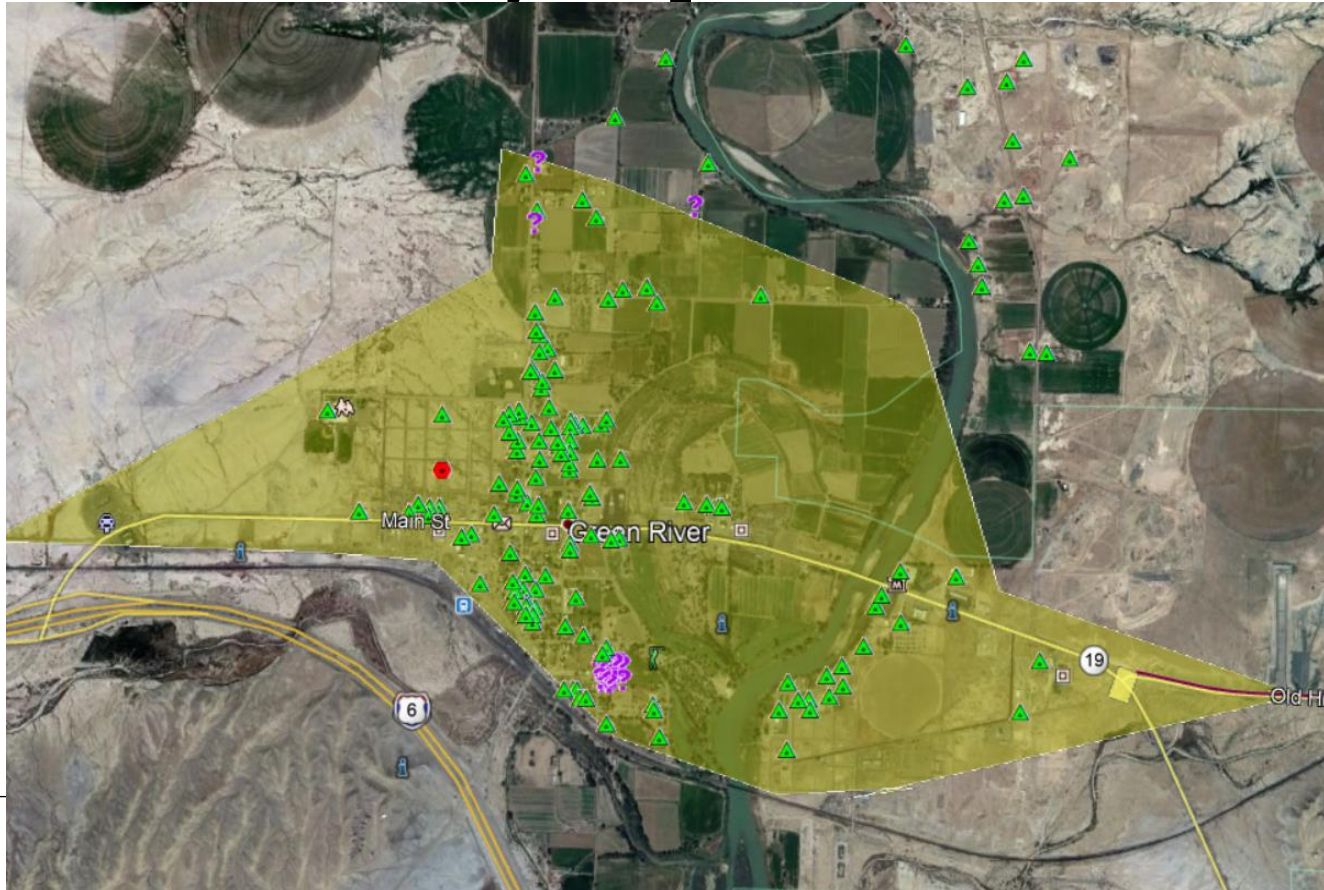
Geography



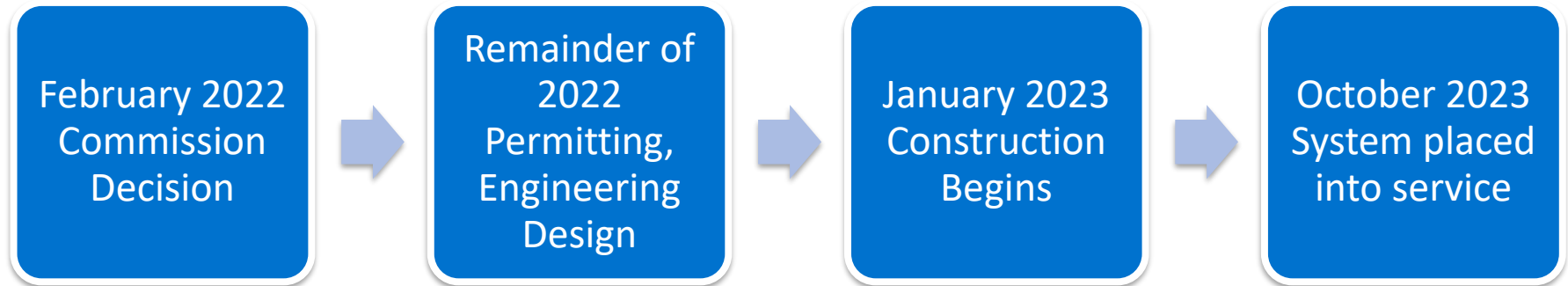
Geography



Areas Served & Survey Responses



Timeline for Green River



Facility Conditions



Facility Conditions



Conversion to Service Plan (Exhibit 2.08)

- Pre-design work
 - Records research, centerline survey, depth-of-cover survey, AC study, Corrosion assessment plan
- Investigative Field Work
 - Where possible – excavate & investigate buried fitting locations, verify pipeline yield stress properties, conduct inline inspection, conduct CIS and DCVG surveys to determine damage
- Final Measures Prior to Commissioning
 - Mitigate cover issues, load line and fittings into GIS system for future emergency use, fence all above-ground facilities for security purposes, lock and tag all valves
- Commissioning
 - Purge the line, bring line to 200 PSIG and let the line stabilize, perform leak detection survey
 - If successful - bring line to full pressure, perform another leak test

Rural Utah Expansion Allowed Spend Example

Year 1	Year 2	Year 3	Year 4	Year 5
\$30	\$10	\$29.5	\$30	\$10
	69.5 M spent years 1-3			
		69.5 M spent years 2-4		
			69.5 M spent years 3-5	

Total spent years 1-5 = \$109.5 million

Total allowed at current revenue requirement: \$173.8 million

Remaining that may be spent in future years \$64.3 million

Customer Interest

- Web page on Dominionenergy.com
 - <https://www.dominionenergy.com/projects-and-facilities/natural-gas-projects/utah-rural-expansion/green-river>
- Two virtual open houses
 - <https://vimeo.com/539653248/6a0c81f67a>
- Facebook posts
- Surveys
- Canvassing

Resources for Low-Income Customers



- Housing Rehab Program
 - Low-interest loans to switch to a natural gas furnace or other home repair
 - Interest rate between 1-3%
 - Applicant income must be 60% or less of area median income
- Weatherization Program
 - Helps make homes more energy efficient
 - Furnace help possible
 - Based on an energy audit, other work could be performed
 - Available for households that are eligible for HEAT assistance

13



Questions