



2022 Infrastructure Tracker Annual Update

June 2022

Agenda

- Belt Line Replacement
 - 2022 Projects Update
 - Scheduling
 - 2021 Cost Variance
- High Pressure Replacement
 - 2022 Projects Update
 - Scheduling
 - 2021 Cost Variance

Belt Line 2022

- Current 2022 Projects Schedule:
 - Salt Lake County (\$6M)
 - BL7
 - Phase I (\$5.4M)
 - Phase II (\$600k)
 - Salt Lake County (\$500K)
 - BL32- 600N/700N in Salt Lake City
 - On hold/HDD Crossing at the Jordan River
 - Salt Lake County (\$1M)
 - BL29- 400 N 500 W in Salt Lake City
 - Salt Lake County (\$2.5M)
 - BL28- North Temple 2200 W to 1000 W in Salt Lake City
 - Complete 2" install and casing @ Jordan River
 - TB completed following crossing at Jordan River/700N



Belt Line Work 2022



Belt Line:	BL32-in Salt Lake City
Stage:	On hold/SLC HDD approval
Challenges Include:	Boring of I-215, Redwood Road and the Jordan River
Footage:	15,000 feet



Belt Line Work 2022

Belt Line:	BL29 Salt Lake City
Stage:	In Construction
Challenges Include:	Contractor Availability Railroad Directional Drill -Complete
Footage:	3,020 feet



400 West

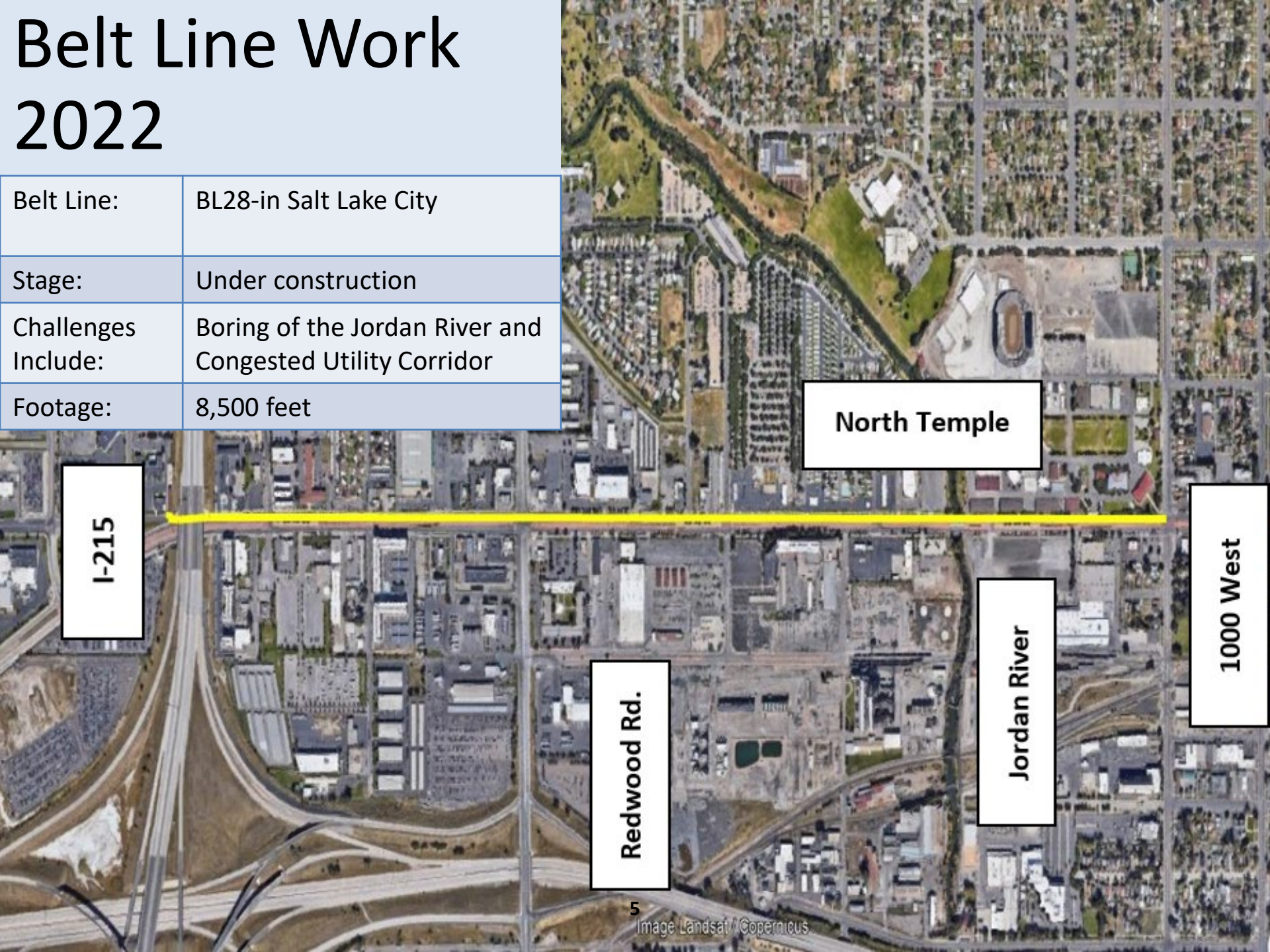
600 West

Original Location

400 North

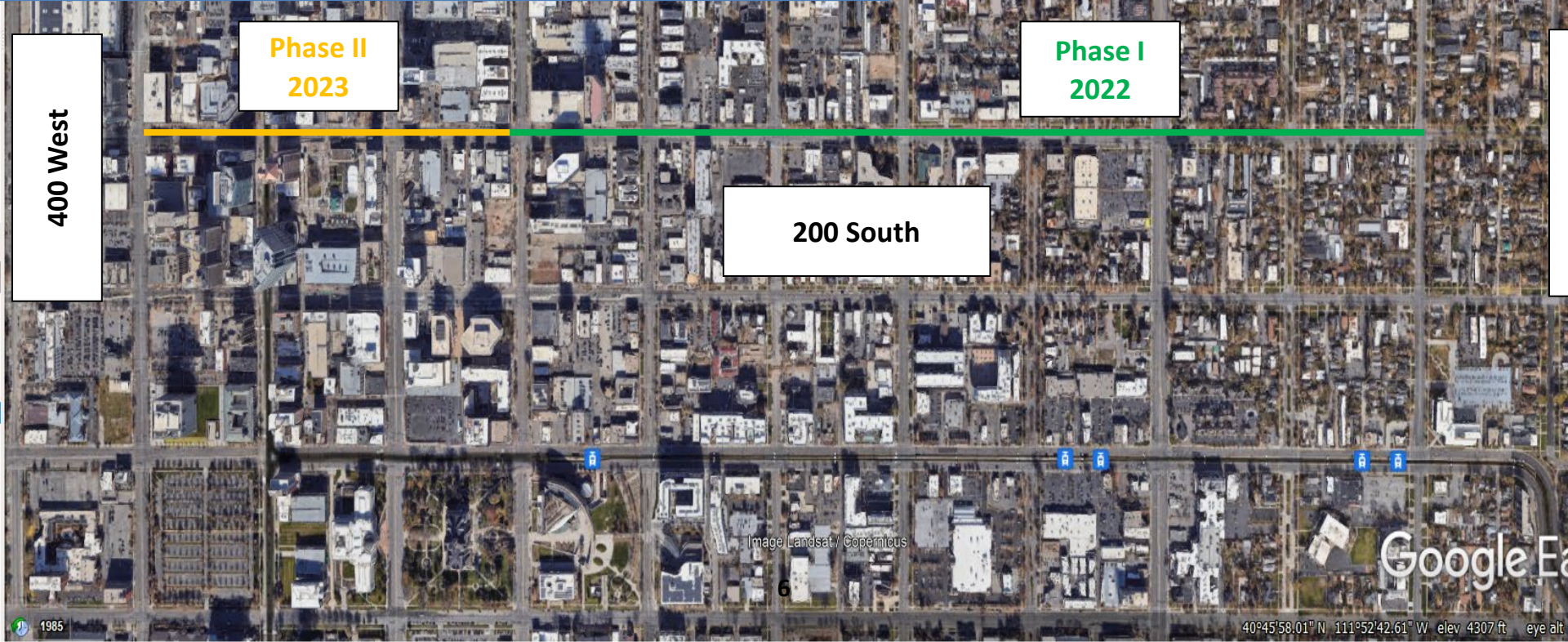
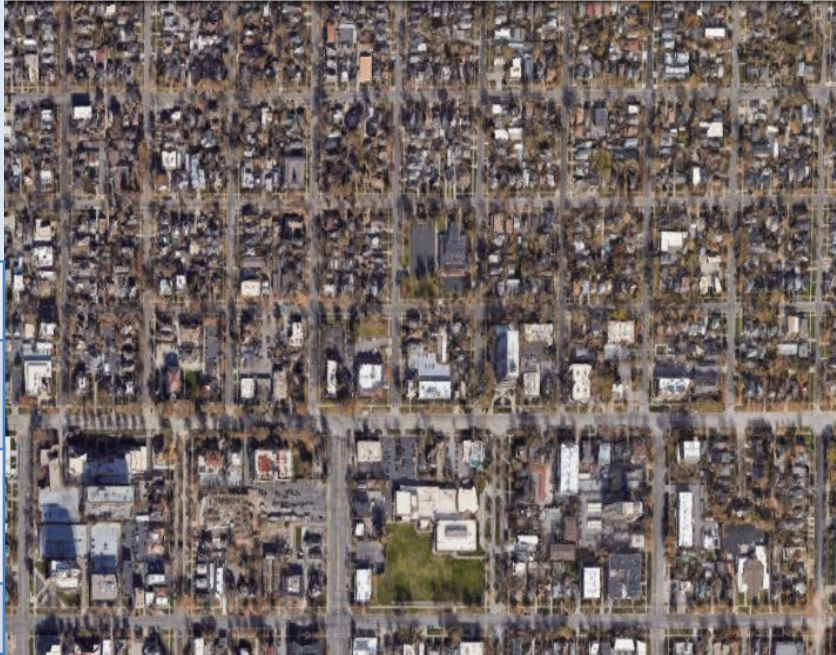
Belt Line Work 2022

Belt Line:	BL28-in Salt Lake City
Stage:	Under construction
Challenges Include:	Boring of the Jordan River and Congested Utility Corridor
Footage:	8,500 feet



Belt Line Work 2022

Belt Line:	BL7 in Salt Lake City
Stage:	Phase I (2022) in Construction Phase II (2023) in Design
Efficiency/Challenges	Coordination with Salt Lake City reconstruction project/congested utility corridor
Footage:	9,029 feet



Phase II
2023

Phase I
2022

400 West

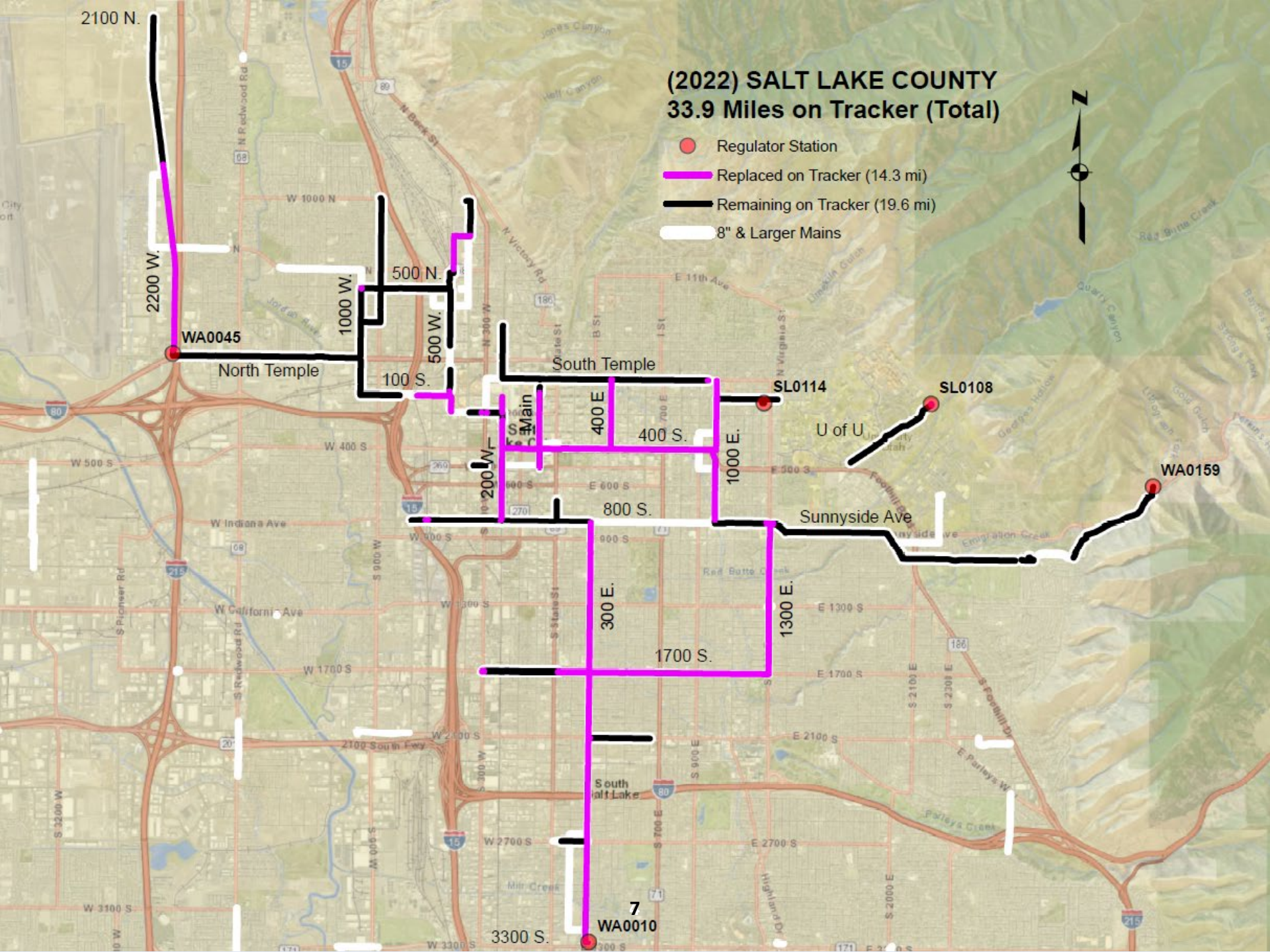
200 South

Image Landsat / Copernicus

Google Earth

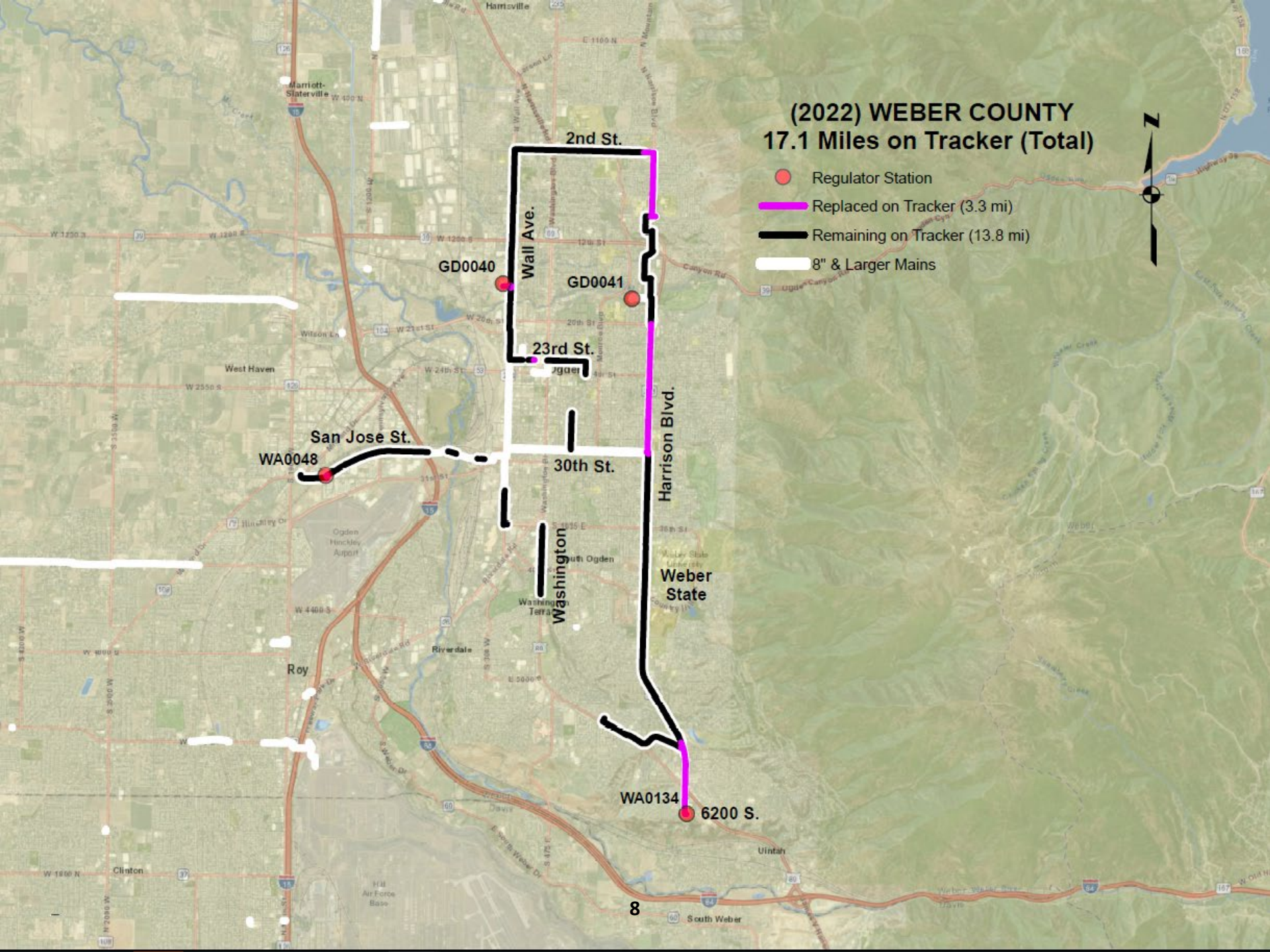
(2022) SALT LAKE COUNTY 33.9 Miles on Tracker (Total)

- Regulator Station
- █ Replaced on Tracker (14.3 mi)
- █ Remaining on Tracker (19.6 mi)
- █ 8" & Larger Mains



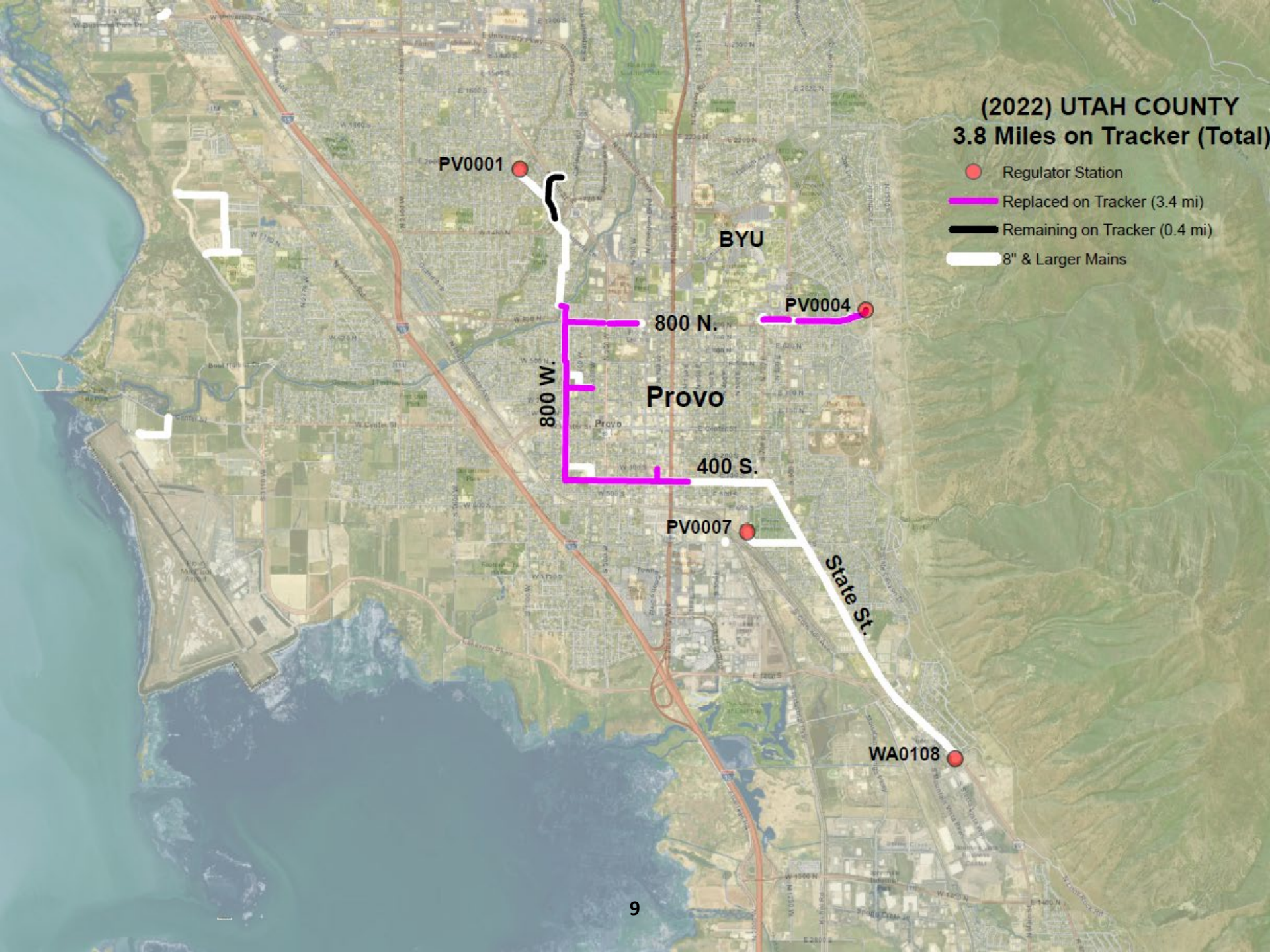
(2022) WEBER COUNTY 17.1 Miles on Tracker (Total)

- Regulator Station
- █ Replaced on Tracker (3.3 mi)
- █ Remaining on Tracker (13.8 mi)
- █ 8" & Larger Mains



(2022) UTAH COUNTY 3.8 Miles on Tracker (Total)

- Regulator Station
- █ Replaced on Tracker (3.4 mi)
- █ Remaining on Tracker (0.4 mi)
- █ 8" & Larger Mains

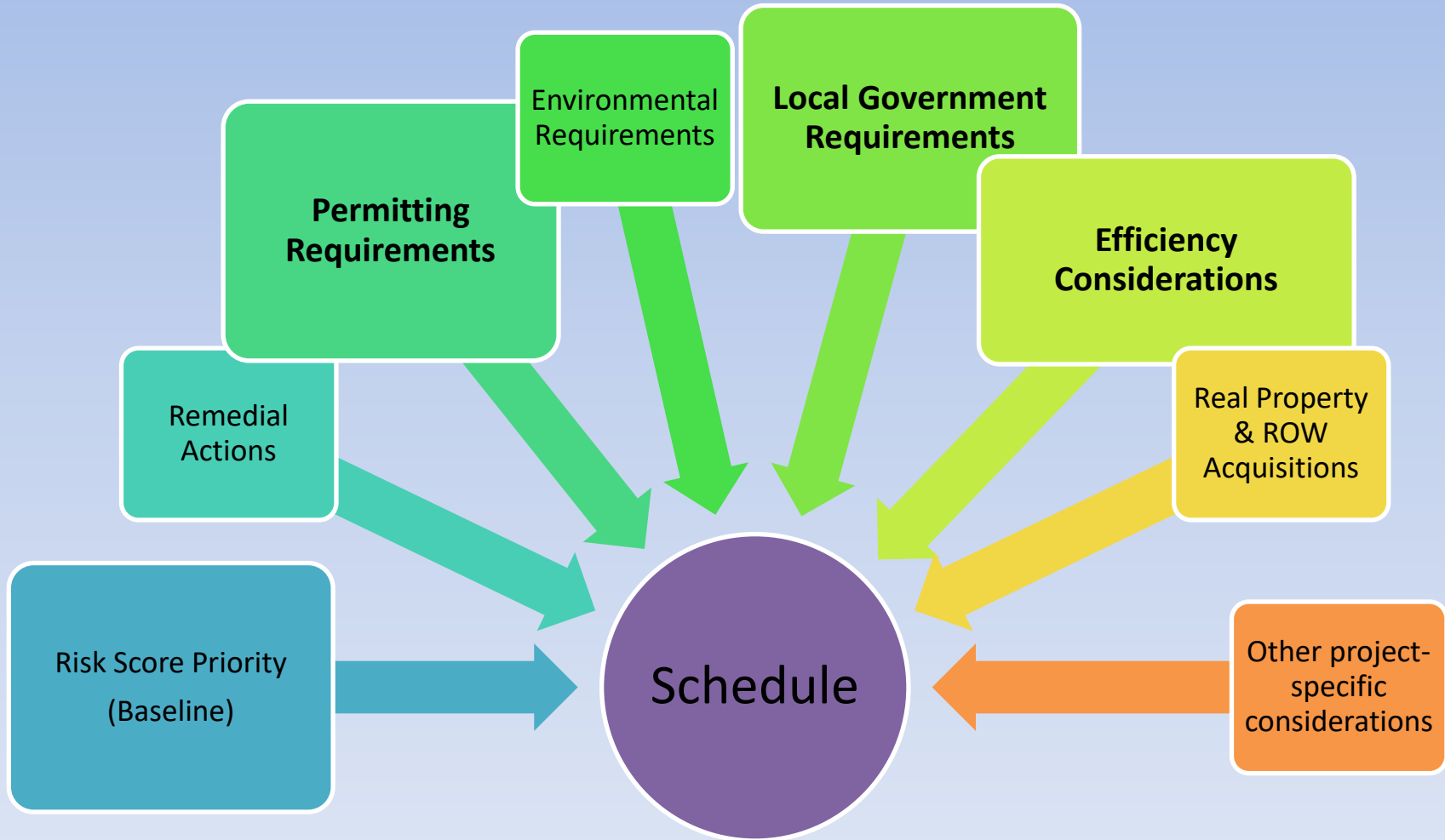


Belt Line Pipe

	Original Tracker Pipe Footage	Miles	
Salt Lake County	178,848	33.9	
Utah County	20,242	3.8	
Weber County	90,259	17.1	
Davis County	80,606	15.3	
Total	369,955	70.1	
	Tracker Pipe Footage	Miles	
Salt Lake County	75,471	14.3	
Utah County	18,309	3.5	
Weber County	17,651	3.3	
Davis County	61,980	11.8	
Total	173,411	32.9	
	Remaining Tracker Pipe Footage	Miles	
Salt Lake County	103,377	19.6	
Utah County	1,933	0.4	
Weber County	72,608	13.8	
Davis County	18,626	3.5	
Total	196,544	37.3	

Scheduling Criteria

Belt Line Replacements



IHP Priority Update for 2022

1,27,**28**,7,9,10,4,14,
29,8,18,26,45,12,
39,16,46,42,44,38,
6,53,31,13,36,37,30,
41,22,34,47,19,24,
49,23,43,11,40,48,
52,25,**32**,33

*2022 Segments

2022 Schedule

BL32
BL28
BL29
BL7- Phase I

Remedial
Actions

Permitting
Requirements

Environmental
Requirements

Local
Government
Requirements

Efficiency
Consideration

Real Property &
ROW
Acquisitions

Other project-specific
considerations

Schedule

Project Segments

March 2021 Risk Score Priority

Segment Priority:

Partially Complete Segments

1, 27, 28, 7, 9, 10, 4, 14, 29, 8, 18, 26, 45, 12, 39, 16, 46, 42, 44, 38, 6, 53, 31, 13, 36, 37, 30, 41, 22, 34, 47, 19, 24, 49, 23, 43, 11, 40, 48, 52, 25, 32, 33.

Completed segments:

2, 3, 5, 15, 17, 20, 21, 35, 50, 51, 54

June 2022 Risk Score Priority

Segment Priority:

Partially Complete Segments

1, 27, 28, 7, 9, 10, 4, 14, 29, 8, 18, 26, 45, 12, 39, 16, 46, 42, 44, 38, 6, 53, 31, 13, 36, 37, 30, 41, 22, 34, 47, 19, 24, 49, 23, 43, 11, 40, 48, 52, 25, 32, 33.

Completed segments:

2, 3, 5, 15, 17, 20, 21, 35, 50, 51, 54

- Prioritized by relative risk score

Belt Line 2021 Cost Variance

Project	Budget	Actual	Variance	Explanation
Salt Lake County	\$10,000,000	\$7,094,779	\$2,905,221	BL32 – ROW delay at the Jordan River BL29 – Stopped short for the heating season BL28 – Congested utility corridor took more time than estimated
Total	\$10,000,000	\$7,094,779	\$2,905,221	

Questions?

High Pressure Replacement

- HP Replacement Program
 - 2022 Projects Update
 - Scheduling
 - 2021 Cost Variance

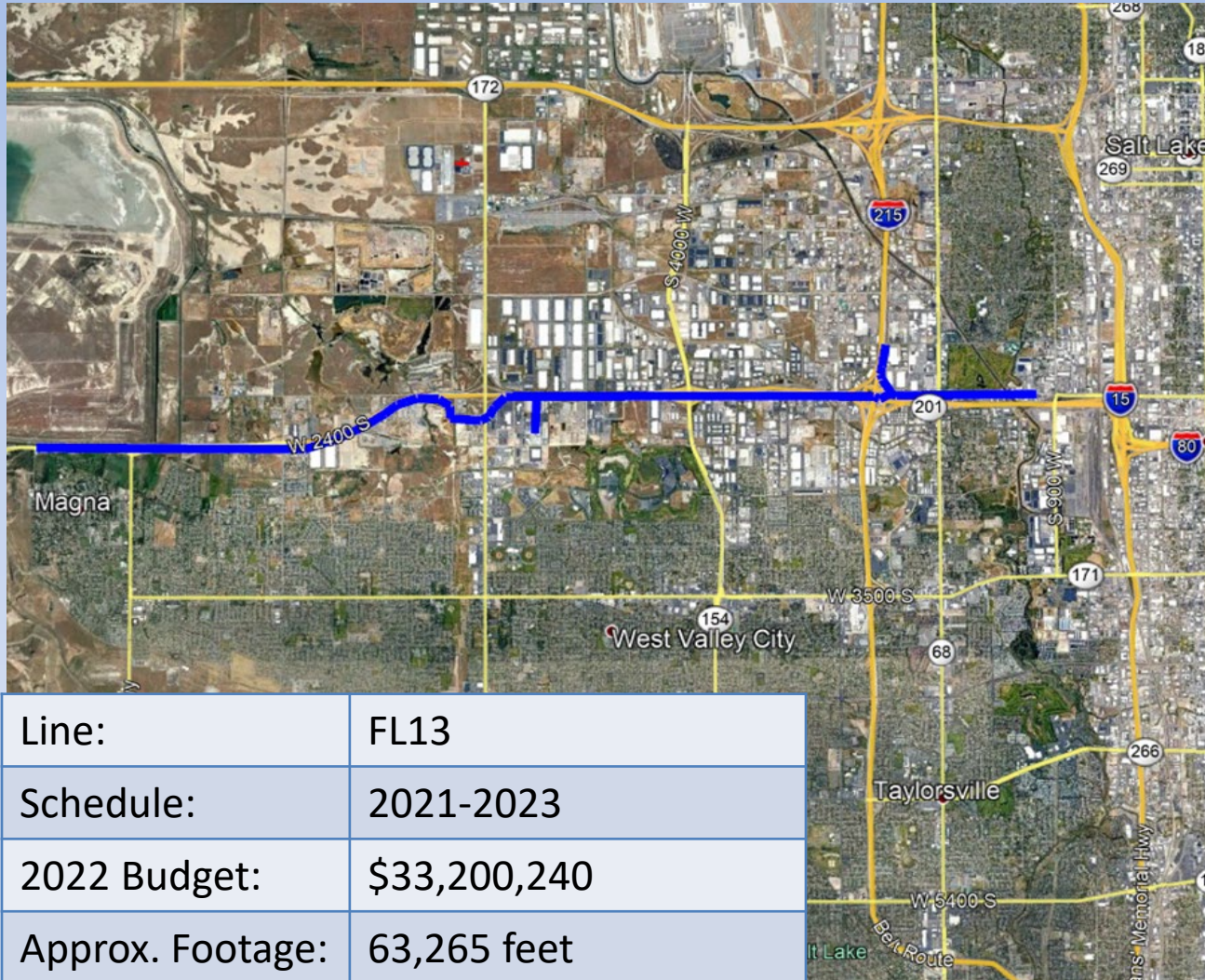


Feeder Line Replacement Update

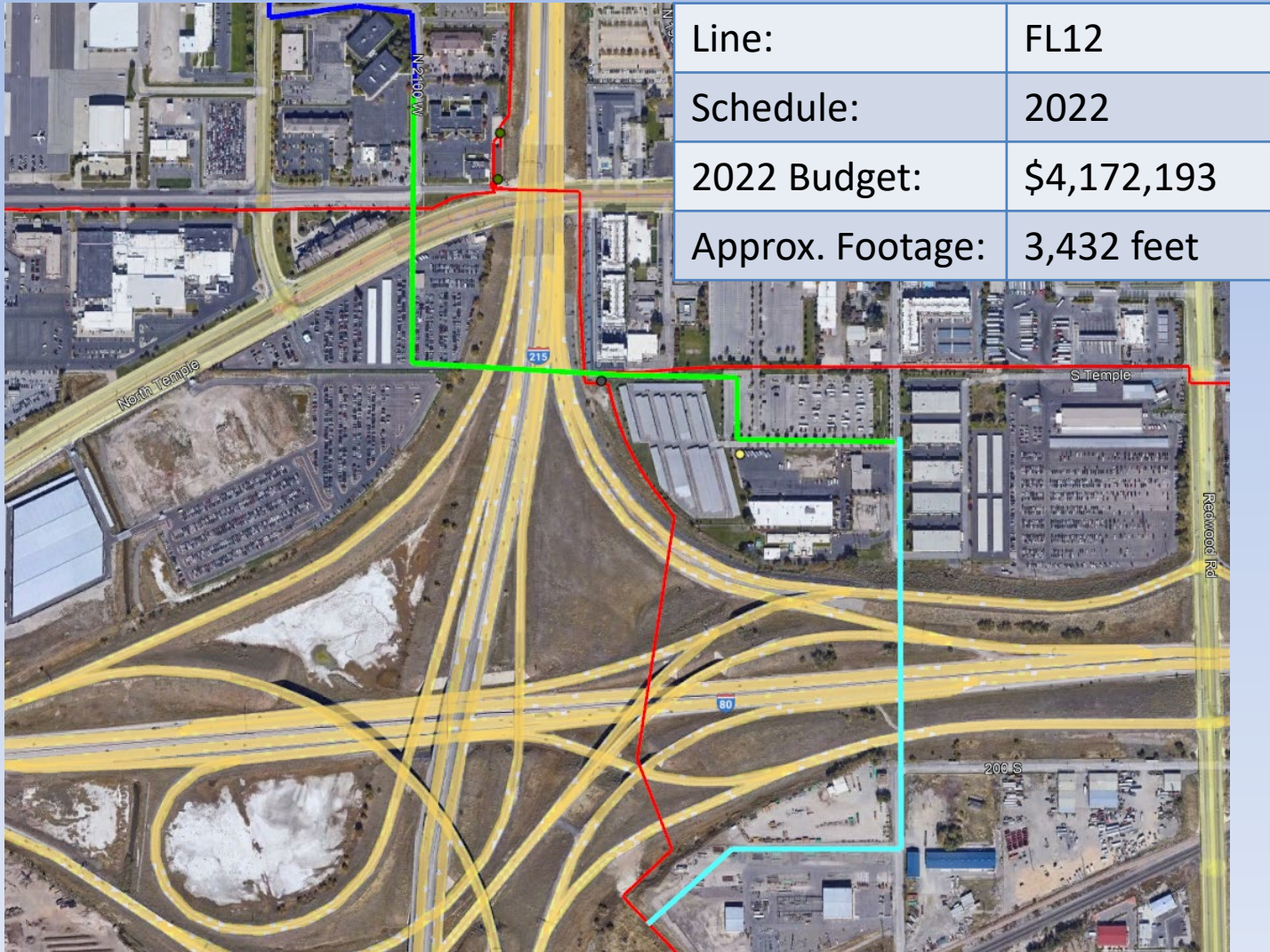


Line:	FL43-3 (FL134)
Schedule:	2021-2023
2022 Budget:	\$16,145,000
Approx. Footage:	95,400 feet

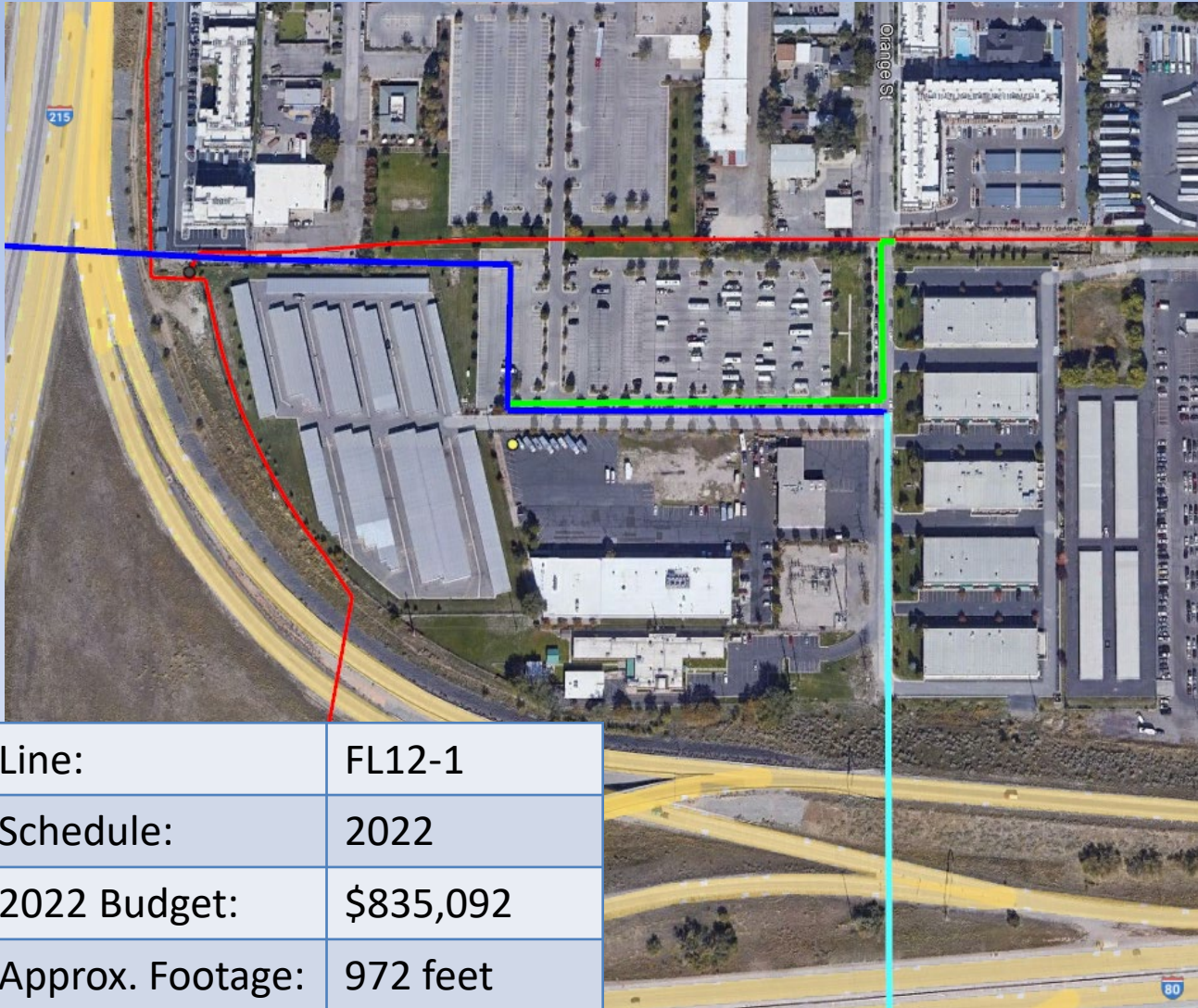
Feeder Line Replacement Update



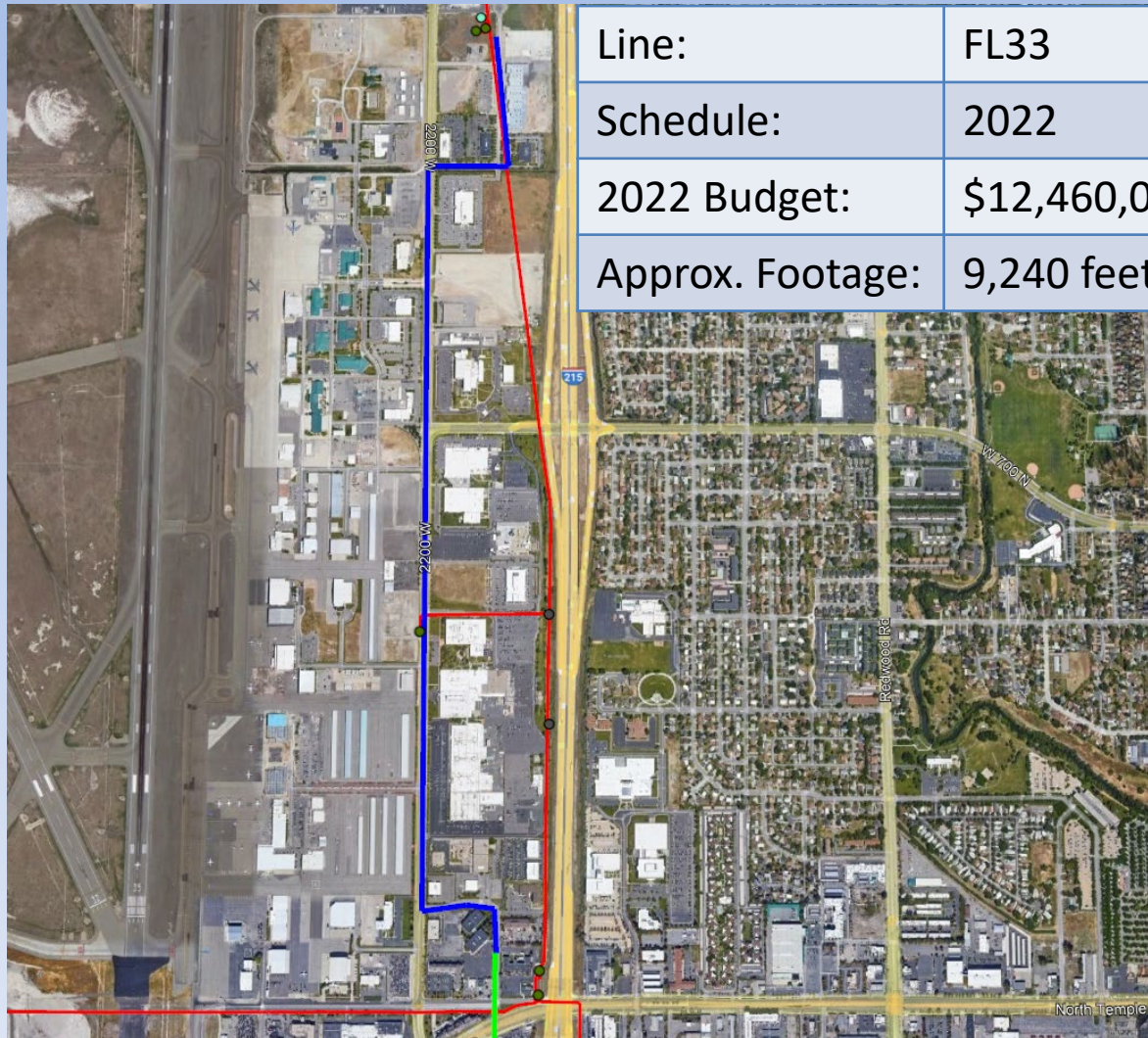
Feeder Line Replacement Update



Feeder Line Replacement Update

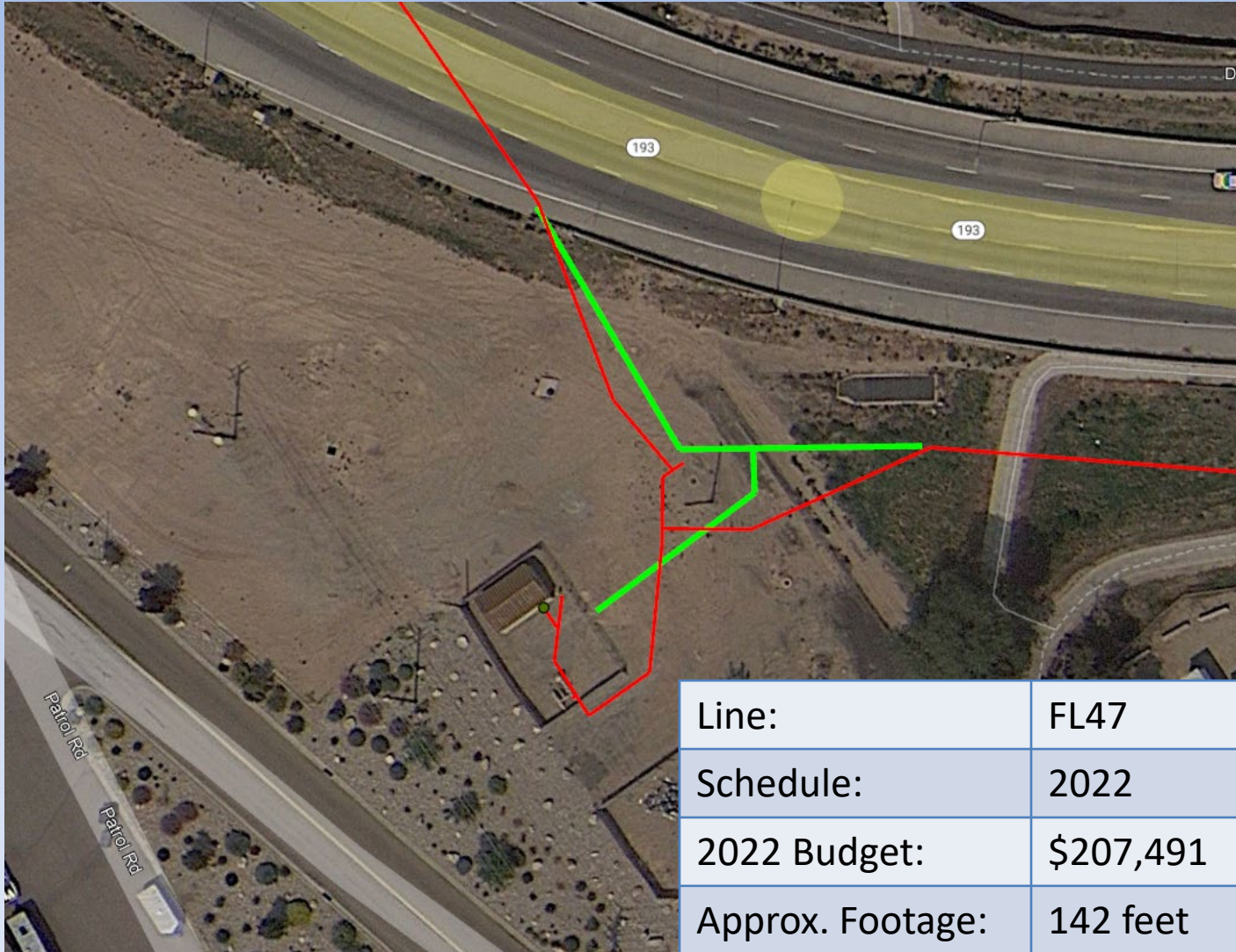


Feeder Line Replacement Update



Line:	FL33
Schedule:	2022
2022 Budget:	\$12,460,000
Approx. Footage:	9,240 feet

Feeder Line Replacement Update



Feeder Line Replacement Update



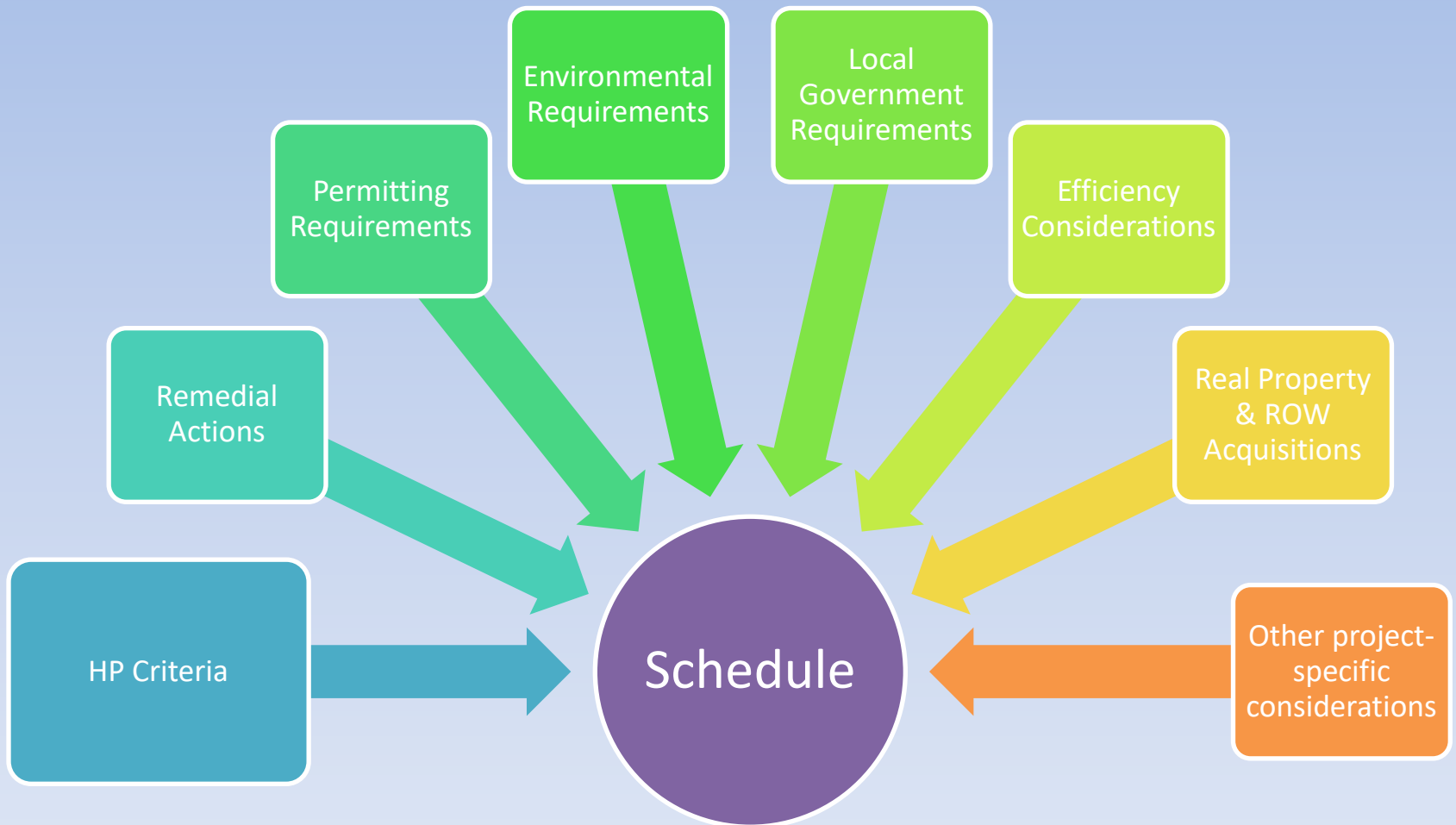
Feeder Line Replacement Update



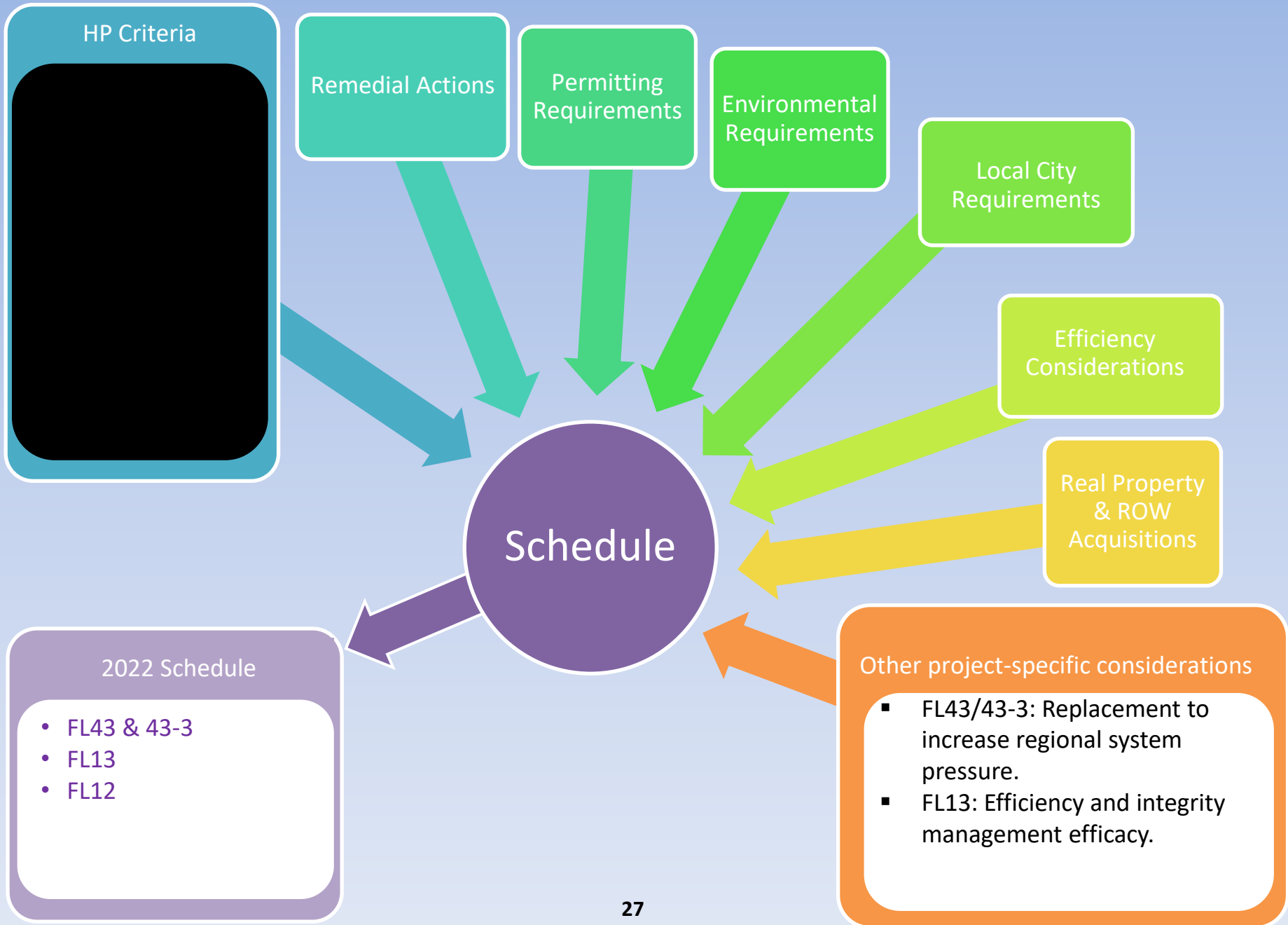
2022 Schedule

Line	Location
FL43-3 (FL134)	Duchesne County
FL13	Salt Lake County
FL12	Salt Lake County
FL12-1 (FL139)	Salt Lake County
FL33 (FL12)	Salt Lake County
FL47	Davis County
FL42	Utah County
FL19	Weber County

Scheduling Feeder Line Replacements



Scheduling per Section III of the Settlement Stipulation, Docket 13-057-05, Exhibit 4



Feeder Line 2021 Cost Variance

Project	Budget	Actual	Variance	Explanation
FL23/FL22	\$8,000,000	\$14,246,565	(\$6,246,565)	FL23 and FL22 are one continuous line that will be replaced and renamed by FL127. Unanticipated groundwater and restoration costs delayed the project and increased the costs. Additionally, a piece of equipment required for the project was more costly than anticipated. Together, these circumstances resulted in the increase in costs shown.
FL43	\$42,500,000	\$42,013,848	\$486,152	
FL13	\$12,879,069	\$10,027,237	\$2,851,832	
Pre-engineering	\$550,000	\$394,814	\$155,186	
Total HP	\$63,929,069	\$66,682,464	(\$2,753,395)	
Total IHP	\$10,000,000	\$7,094,779	\$2,905,221	
Total	\$73,929,069	\$73,777,243	\$151,826	

*2021 4Q Tracker Variance Report; January 25, 2022; Docket No. 20-057-22

Questions?