

# 2025-2026 IRP Technical Conference

## Docket No. 25-057-02

---

July 15, 2025



# 2025-2026 IRP Schedule



## March 4, 2025

- Review IRP Standards and Guidelines
- Review 2024 UTPSC Order regarding IRP
- Transportation and Storage Planning
- Gas Supply Hedging
- Supply Sourcing – Volumes and Locations

## May 6, 2025

- RFP Review (Confidential)
- Long-Term Planning
- Wexpro Matters (Confidential)
- Data Center Update (Confidential)

## April 10, 2025

- Heating Season Review (LNG)
- IRP Project Detail Discussion
- Hydrogen
- Rural Expansion Update
- System Integrity

## July 15, 2025

- Final Presentation

*“Enbridge continues to focus on safely providing the energy needed today while simultaneously advancing solutions for tomorrow. The Company seeks emissions reduction opportunities in each area of our operations, focusing on improving our performance and modernizing our equipment, as well as investments in lower-carbon initiatives.”*

- **Updates provided on Enbridge Gas Utah sustainability initiatives**

- Methane emissions reduction initiatives
- Wexpro sustainability initiatives
- ONE Future
- Responsibly Sourced Natural Gas (RSG)
- Renewable Natural Gas (RNG)
- Thermwise<sup>®</sup> energy efficiency programs
- GreenTherm<sup>®</sup> voluntary renewable natural gas
- CarbonRight<sup>™</sup> program
- Hydrogen initiatives
- Sustainability legislation
- Community programs

# Environmental Review



- Enbridge Gas Utah is fully committed to meeting the energy needs of our customers in an environmentally responsible manner
  - Commitment to compliance with environmental laws and regulations

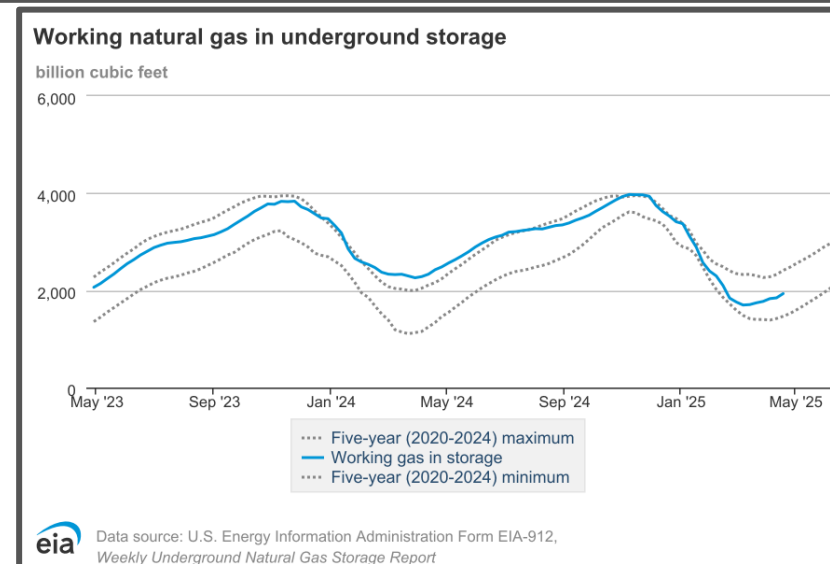
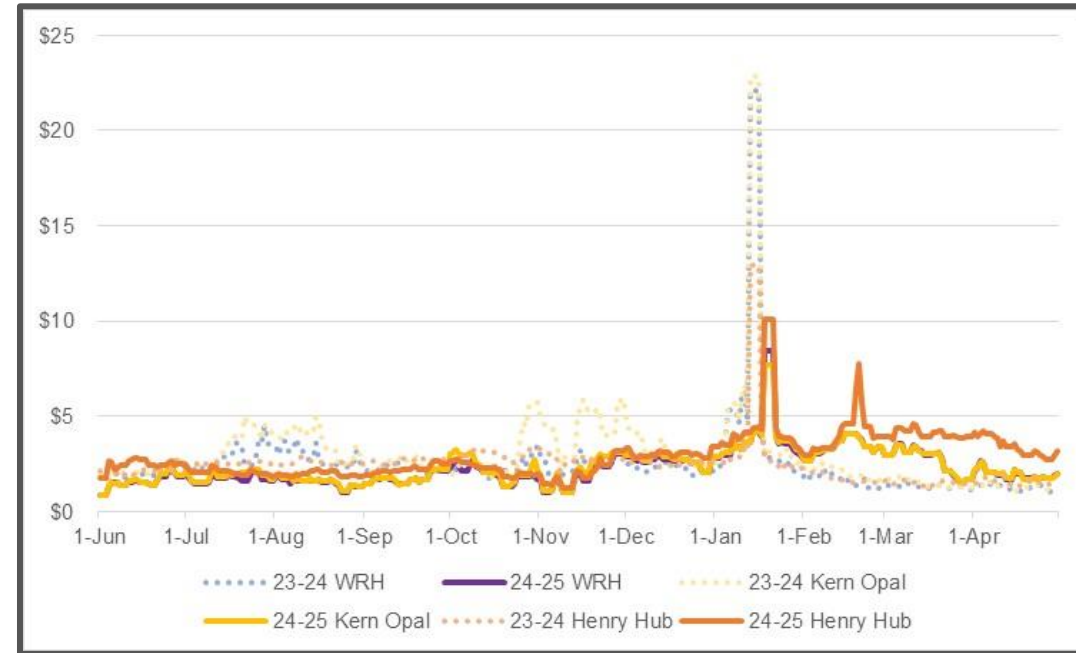
- Greenhouse (CO<sub>2</sub>e) Gas Intensity

Reporting Year	CO <sub>2</sub> e Intensity (MT CO <sub>2</sub> e/MMBtu)
2020	0.0009
2021	0.0011
2022	0.0007
2023	0.0007
2024	0.0009

- Conservation efforts will continue to have a positive environmental impact
  - Estimated savings of more than 927,000 Dth of natural gas in 2024
    - Equivalent of over 49,000 metric tons of CO<sub>2</sub>e or nearly 11,000 passenger vehicles each driven for one year (calculated using EPA's GHG equivalencies calculator)
- Lifetime savings attributable to the ThermWise® program totals more than 816,000 tons of CO<sub>2</sub>e
  - Equivalent of about 190,000 passenger vehicles each driven for one year

# Industry Overview

- Regulatory update
- Discussion of industry trends
  - Demand
  - Pricing
  - Production
  - Storage
  - LNG Exports
  - Sustainability
- Review of UT/WY IRP process
- Heating season review



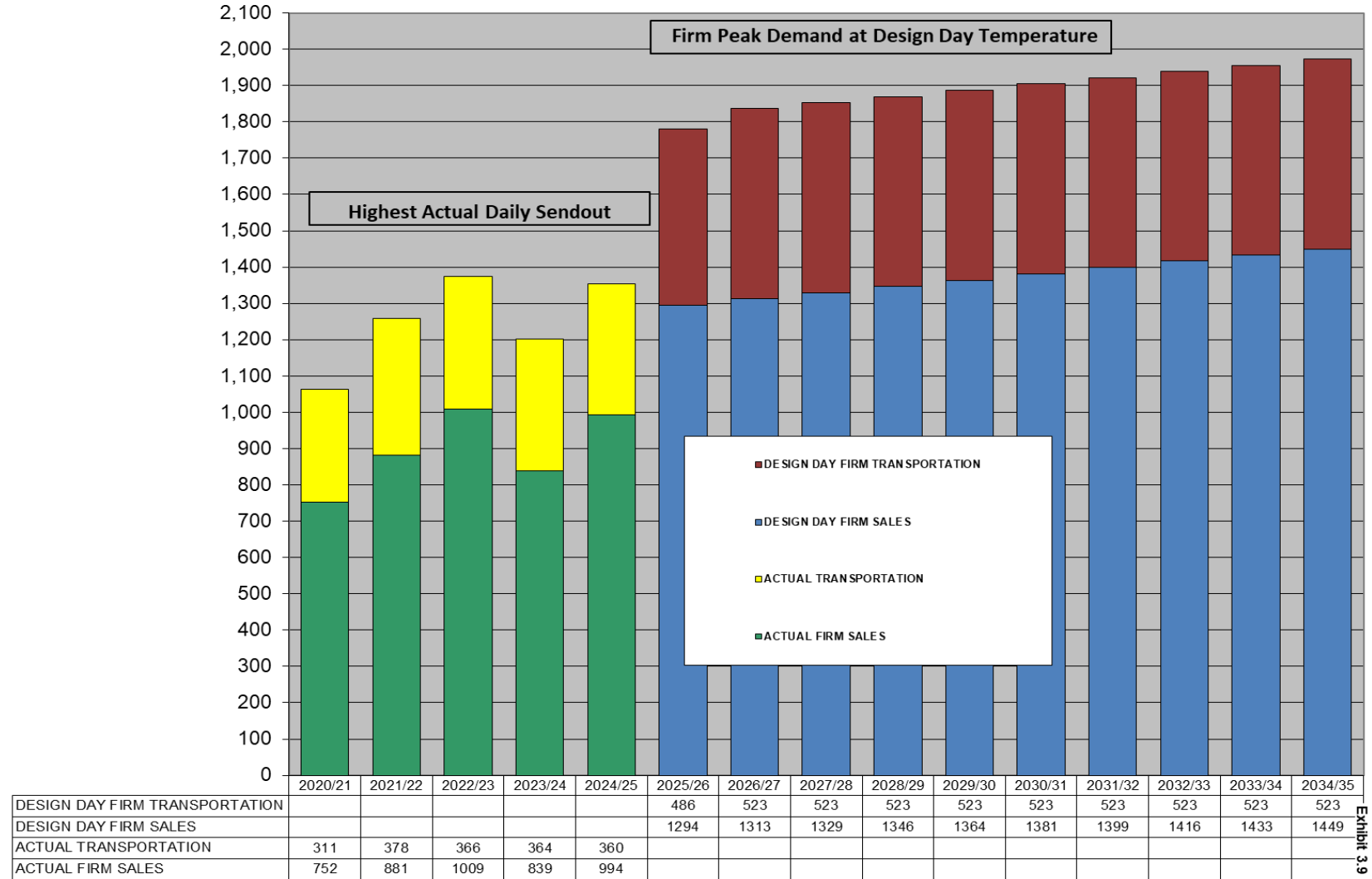
# Customer and Gas Demand Forecast



- 2025-2026 design-day firm sales demand

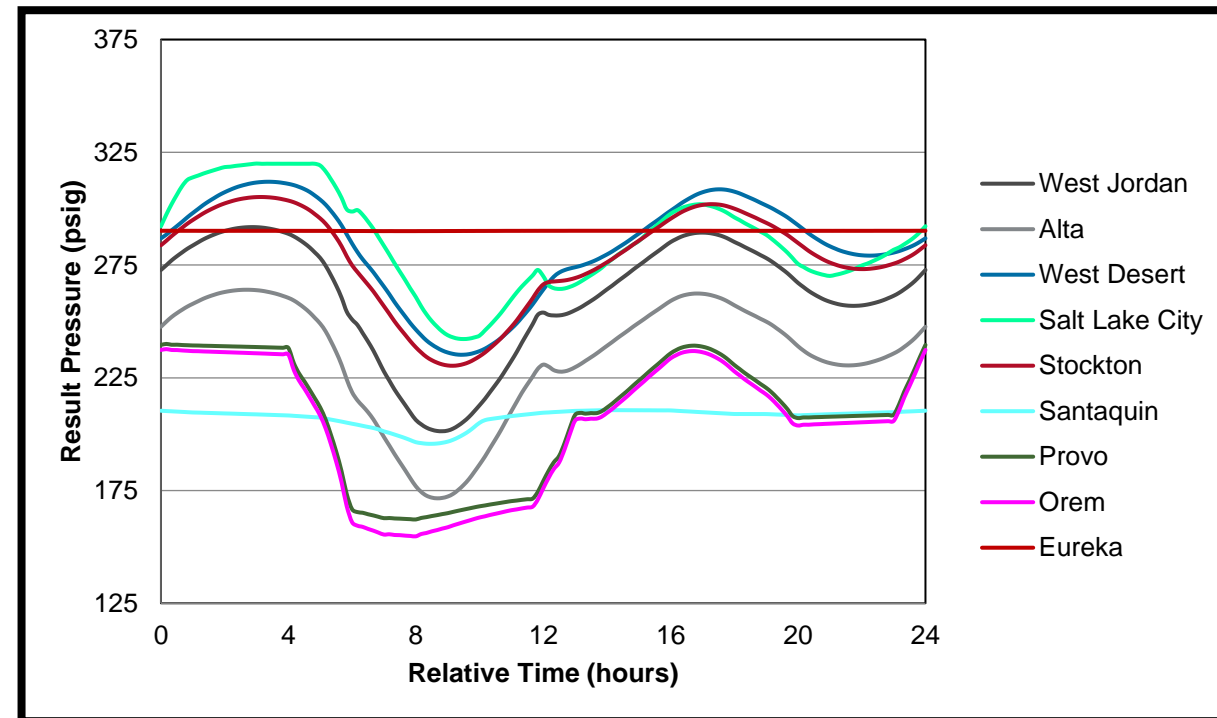
= 1.29 MMDth

DTH/DAY (THOUSANDS)



# System Capabilities and Constraints

- Distribution system meets current design-day needs
  - Feeder line systems have adequate capacity to meet average-daily and peak-hourly demands
  - Supply contracts are adequate
- Projects have been identified to address constraints and concerns
  - FL135, Central 20-inch Loop
  - Gate Stations: Rockport (2026 or 2027), Saratoga (2027 or 2028), Central (2028), Riverton (2029), Eagle Mountain (2029 or 2030)
  - Summit/Wasatch County System Reinforcements
  - FL085 upsize east of Saratoga Gate
- Long-term planning
  - Ruby Gate Station
  - Data Centers
  - Peak day growth vs customer growth



# Distribution Action Plan



- High pressure projects (2025-2026 and 2027-2029 highlights)

Year	Project	Estimated Cost	Revenue Requirement
2025	MZ0003 – Remodel of Monticello Gate Station	\$1,500,000	\$171,750
2025	FL71 AC Mitigation – Approx 4.5 miles	\$ 4,500,000	\$516,856
2025	WA1604 – Replace WA0441	\$1,000,000	\$117,900
2025	FL Extension for WA1604 Across Jordan River	\$3,000,000	\$353,700
2025	Black Desert Station in Ivins	\$1,000,000	\$114,500
2025	AF0014	\$850,000	\$97,325
2025	Central 20-inch Loop (Phase 2) – Approximately 10 miles	\$45,000,000	\$5,152,500
2025	FL36 Reinforcement	\$9,000,000	\$1,033,713
2026	South Bluffdale District Regulator Station	\$750,000	\$88,425
2026	FL Extension for Bluffdale Station	\$6,500,000	\$766,350
2026	SY0002 Syracuse District Regulator Station	\$750,000	\$85,875
2026	FL47 Phase 2 Extension for SY0002 Syracuse District Regulator Station	\$4,000,000	\$458,000
2026 or 2027	Phase 1 – Summit/Wasatch Reinforcement – Rockport Gate Station Expansion	\$15,000,000	\$1,722,855
2026	Salem Utah Station	\$850,000	\$97,325
2026	FL Extension for Salem Utah Station – 0.75 Miles 8-inch	\$2,000,000	\$229,000
2026	New Payson UT Station (West of I-15)	\$1,000,000	\$114,500
2026	FL Ext for New Payson Station	\$2,000,000	\$229,000
2026 or 2027	MR0004 – New District Regulator Station	\$1,500,000	\$172,286
2027	South Hurricane District Regulator Station	\$750,000	\$88,425
2027	FL Extension for South Hurricane Station	\$6,500,000	\$766,350
2027	Phase 2 – Summit/Wasatch Reinforcement – FL16 Expansion – Approx. 5 Miles	\$15,000,000	\$1,722,855
2028	Central 20-inch Feeder Line Loop (Phase 3) – Approximately 5 Miles	TBD	TBD
2028	Central Gate Station	TBD	TBD
2029	Phase 3 – Summit/Wasatch Reinforcement – FL16& FL56 Expansion – Approx. 5 Miles	\$15,000,000	\$1,722,855
2029	Riverton Gate Station Expansion	TBD	TBD
2029 or 2030	EG0001 – Gate Station Capacity Increase	TBD	TBD

# Distribution Action Plan

---



- Intermediate-high pressure projects
  - Belt main replacement program
  - Aging infrastructure replacement (Not included in the Infrastructure Rate Adjustment Tracker)
  - Portage IHP expansion under the Rural Expansion program
- Mountain West Pipeline transition
- Rural expansion
  - Eureka
  - Goshen/Elberta
  - Green River
  - Portage
  - Next Steps

# Integrity Management



	2025	2026	2027
Transmission Integrity Management Program	11,689	10,499	9,873
Distribution Integrity Management Program	2,769	2,685	3,035
<b>Total Integrity Management Cost (\$ Thousands)</b>	<b>14,458</b>	<b>13,184</b>	<b>12,908</b>

YEAR	TRANSMISSION MILES ASSESSED	HCA MILES ASSESSED	ANOMALIES REPAIRED
2012	34.430	26.470	28
2013	93.391	50.367	27
2014	80.049	54.555	20
2015	15.903	11.040	2
2016	62.575	37.226	4
2017	49.555	12.935	8
2018	76.327	30.212	9
2019	111.383	25.571	3
2020	188.832	54.624	8
2021	118.389	11.066	11
2022	55.35	4.512	4
2023	81.11	8.803	17
2024	131.193	38.45	30

# Purchased Gas

- Balanced portfolio of gas purchase
  - 193,946 Dth/D Baseload
  - 264,500 Dth/D Peaking
- Hedging review
- Historical heating season Pricing:

Month	2023-2024	2024-2025	Difference
Nov	\$5.09	\$3.18	(\$1.91)
Dec	\$5.90	\$3.95	(\$1.95)
Jan	\$3.56	\$4.42	\$0.86
Feb	\$4.88	\$3.85	(\$1.03)
Mar	\$1.78	\$3.36	\$1.58
Average	\$4.24	\$3.75	(\$0.49)

- Purchase locations and volumes

# Cost-of-Service Gas

---



- Wexpro Production
  - 62.7 MMDth(49.4% of forecasted demand)
  - Cost-of-service production starting to increase with drilling and addition of Piceance development
- Operated Drilling Plans
  - For calendar year 2025, Wexpro plans on completing to production 20 new wells
  - Focus will be on the Trail, Canyon Creek, and Church Buttes
- Piceance Development
  - Phase I and Phase II development will contribute 3.8% of EUWI demand in 2025 and 4.5% in 2026

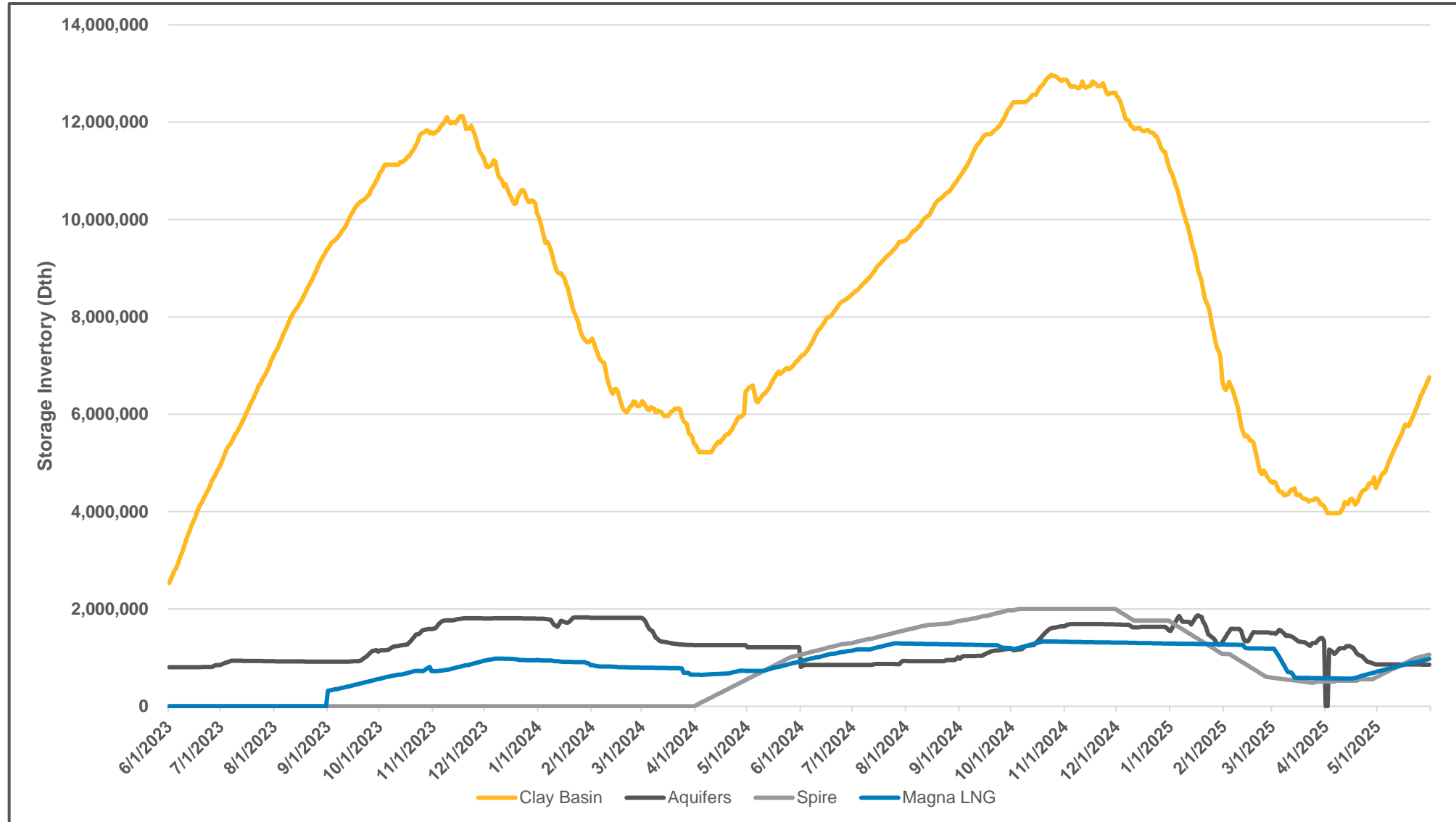
# Gathering, Transportation, and Storage

---



- Transportation capacity
  - Contracted capacity is adequate to meet design-day demands
  - New NWP contract planned to begin in December 2026
  - New contract with Kern River to begin November 2026
- No-Notice Transportation
  - Provides for reservations of transportation capacity for daily adjustments
- Firm Peaking Services
  - Firm Peaking Services offered by both KRGT and DEQP have been the most cost-effective and reliable solution to meet peak-hour demand
  - Contract is in place with Kern River through February 2029
  - Contract with MWP is not yet completed

# Gathering, Transportation, and Storage



## LNG Facility



### Facility Capabilities

- LNG production
  - 100,000 gal/day (341 mcfh)
- On-site LNG storage
  - 15,000,000 gallon (1.2 bcf)
- Re-vaporization
  - 150 mmcfd (6,250 mcfh) @ 720 psig
    - ~10% of Wasatch front design day load

### 2025 Update

- As of July 8, the tank holds 13,200,000 gallons in working capacity and is 88% full.
- Liquefaction is going well and the tank is anticipated to be full near the end of October.
- In the fall, further vaporization tests will be conducted to ensure plant readiness for heating season.

# Energy Efficiency Programs



- Provided results of 2024 programs
- Provided expectations for 2025 programs

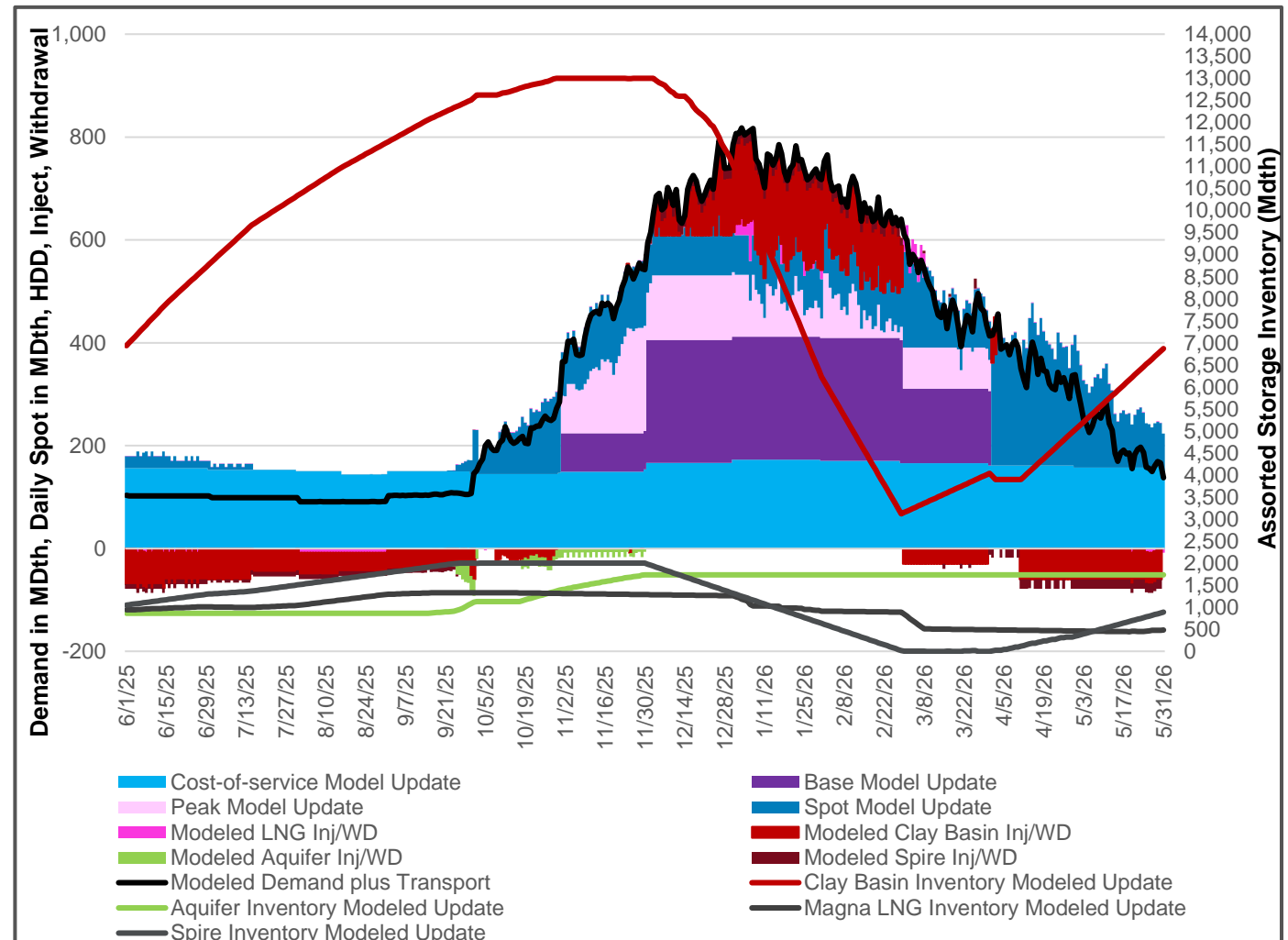
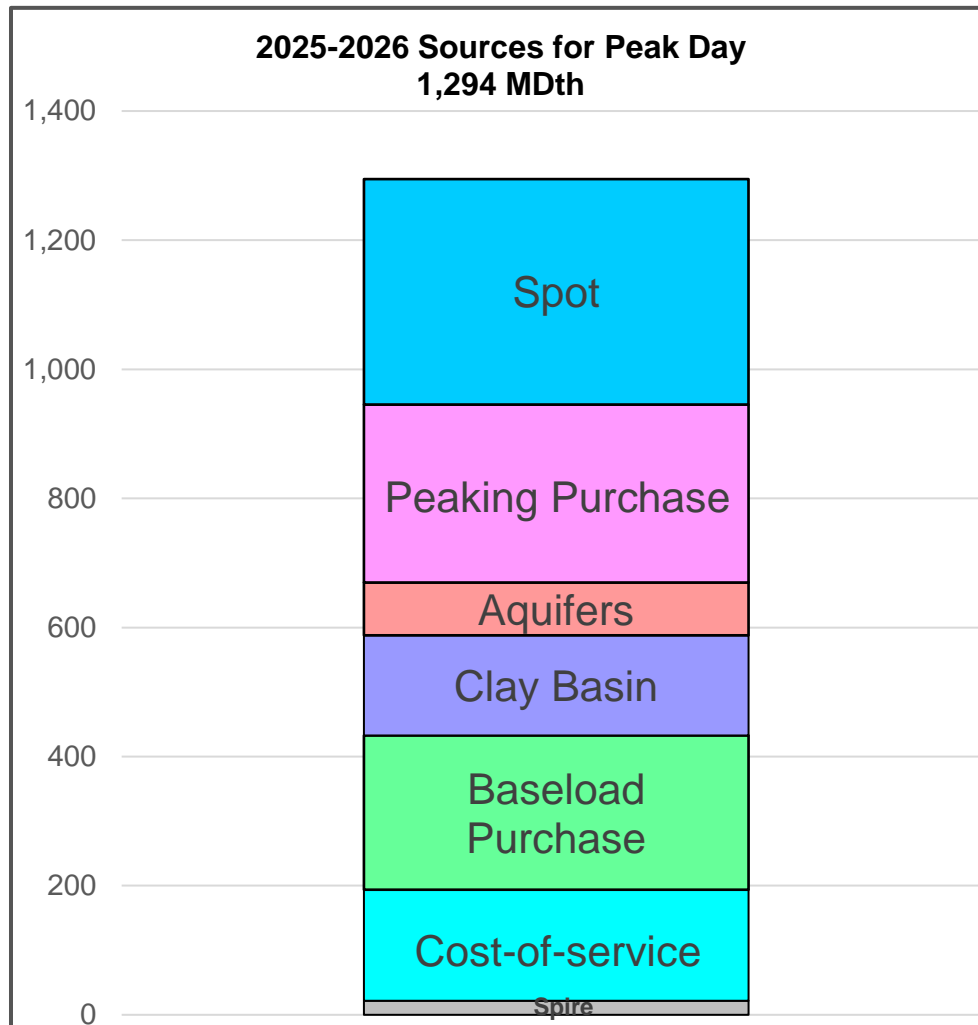
2025 IRP Forward Curve	Total Resource Cost		Participant Test		Utility Cost Test		Ratepayer Impact Measure Test	
	NPV	B/C	NPV	B/C	NPV	B/C	NPV	B/C
ThermWise® Appliance Rebate	\$2.14	1.33	\$18.87	3.78	\$1.71	1.25	-\$4.55	0.65
ThermWise® Builder Rebates	\$4.29	1.31	\$30.83	2.93	\$8.10	1.82	-\$3.91	0.82
ThermWise® Business Rebates	\$0.03	1.01	\$6.48	2.99	\$1.35	1.48	-\$1.20	0.78
ThermWise® Weatherization Rebates	\$0.08	1.01	\$12.84	2.28	\$0.43	1.05	-\$5.08	0.63
ThermWise® Home Energy Plan	\$0.45	1.94	\$2.30	48.22	\$0.44	1.90	-\$0.28	0.77
Low Income Efficiency Program	\$0.31	1.41	\$1.99	7.57	\$0.34	1.47	-\$0.42	0.72
Energy Comparison Report	\$0.51	1.97	\$2.31	5.90	\$0.51	1.97	-\$0.40	0.72
Market Transformation Initiative	-\$1.32	0.00	\$0.00	N/A	-\$1.32	0.00	-\$1.32	0.00
<b>Totals</b>	<b>\$6.49</b>	<b>1.17</b>	<b>\$75.63</b>	<b>3.05</b>	<b>\$11.55</b>	<b>1.37</b>	<b>-\$17.16</b>	<b>0.71</b>

\* Shown in \$millions

# Final Model Results



- Modeling completed with PLEXOS software for 2025/2026 IRP
- Plan includes adequate supplies to meet design-day demand



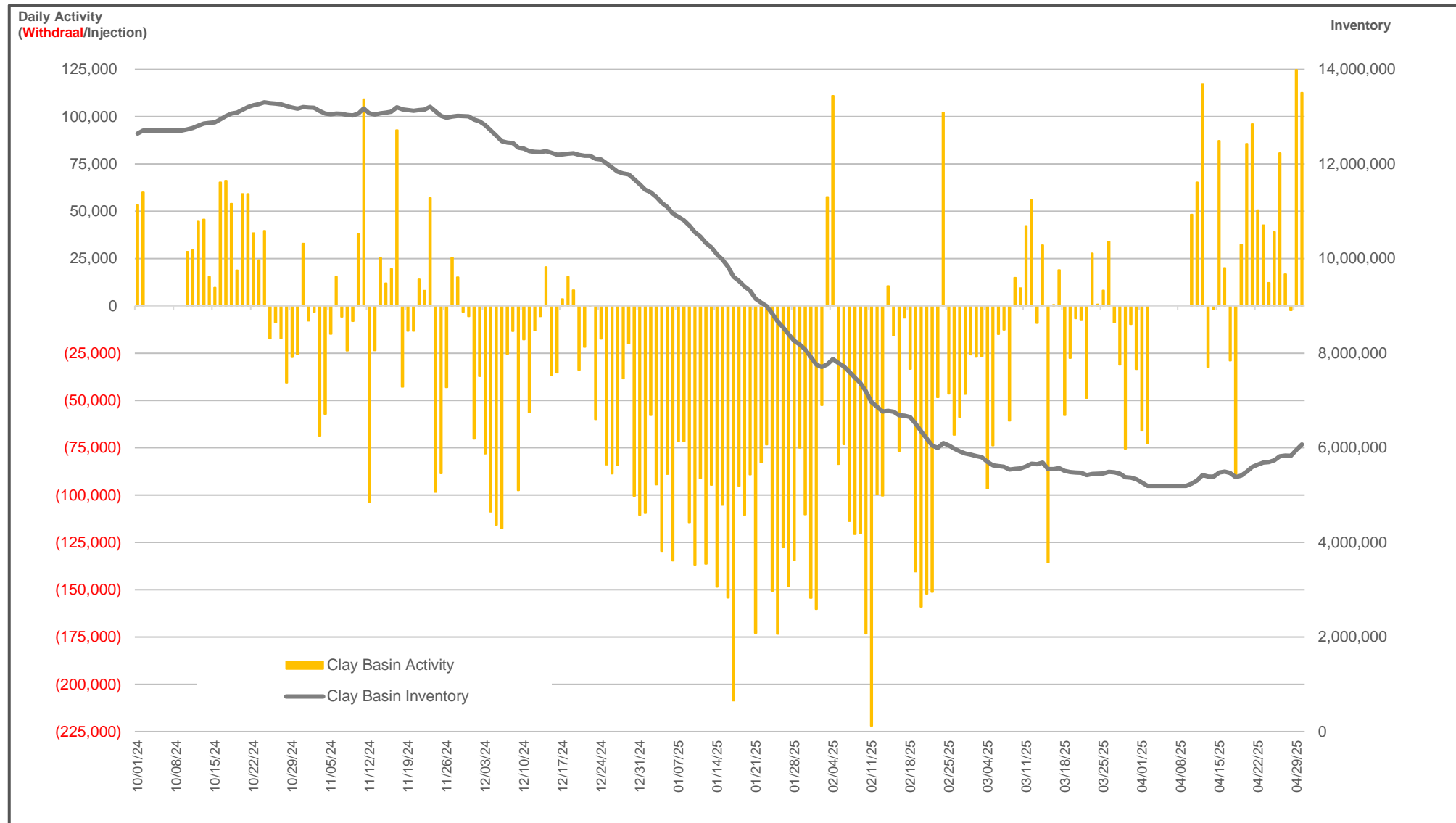
# Question

---

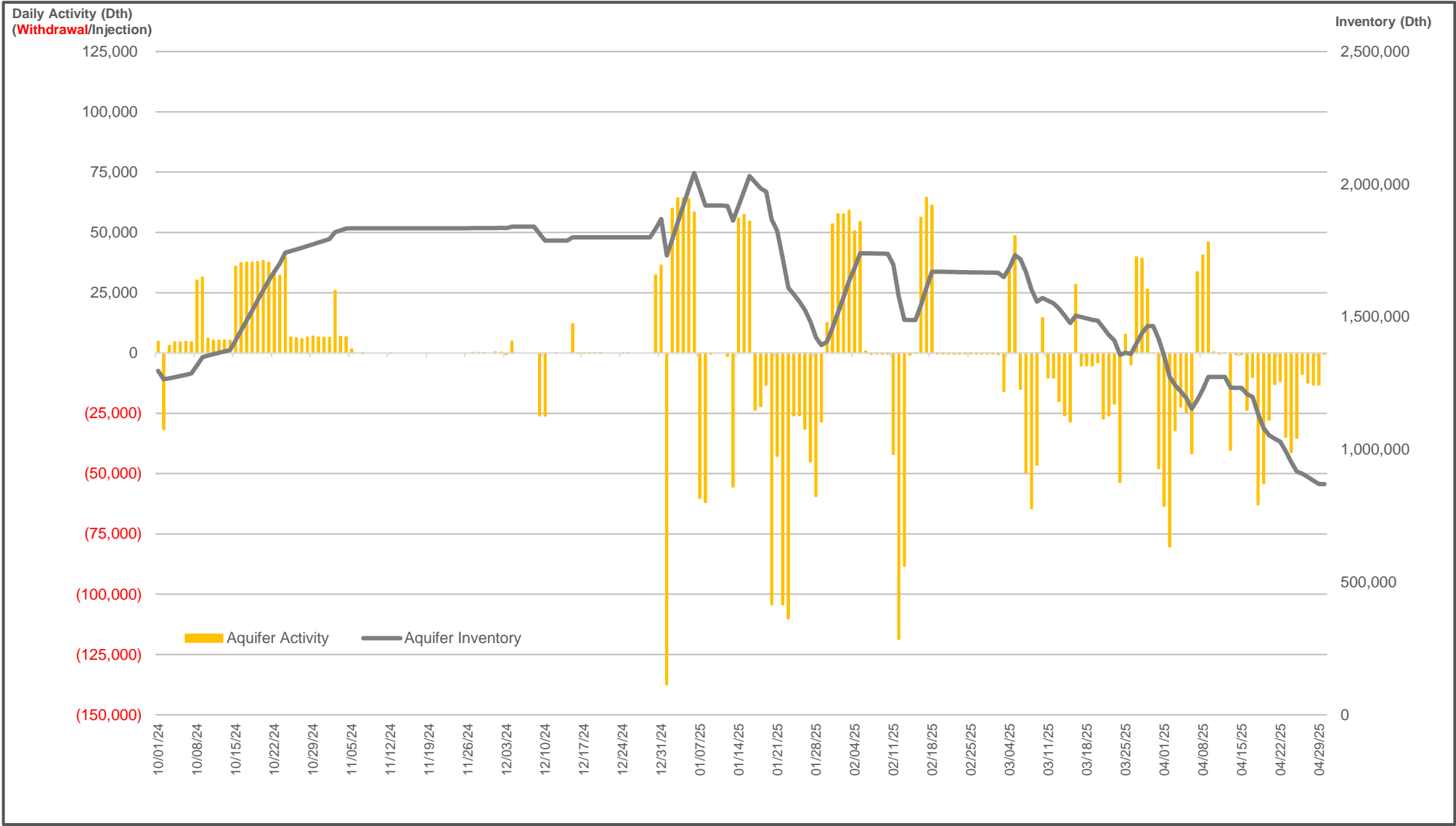


- a. Compare the cost of Wexpro gas vs FOM Market gas that has been or will be used to fill the Magna LNG facility which is projected to be used by the Company for the 2025-2026 heating season.
- b. Compare the cost of Wexpro gas vs FOM Market gas that is currently in storage as well as the volumes projected to be placed in storage to fill Clay Basin gas storage facility which is expected to be used by the LDC for the 2025-2026 heating season.
- c. Compare the cost of Wexpro gas vs FOM Market gas that is currently in storage as well as the volumes projected to be placed in storage to fill the aquifers natural gas storage facilities which is expected to be used by the LDC for the 2025-2026 heating season.
- d. Compare the cost of Wexpro gas vs FOM Market gas that was placed in the Magna LNG facility in 2024 and 2025.
- e. Compare the cost of Wexpro gas vs FOM Market gas that was in storage and later withdrawn from the Clay Basin gas storage facility during the 2024-2025 heating season.
- f. Compare the cost of Wexpro gas vs FOM Market gas that was in storage and later withdrawn from the aquifers during the 2024-2025 heating season.

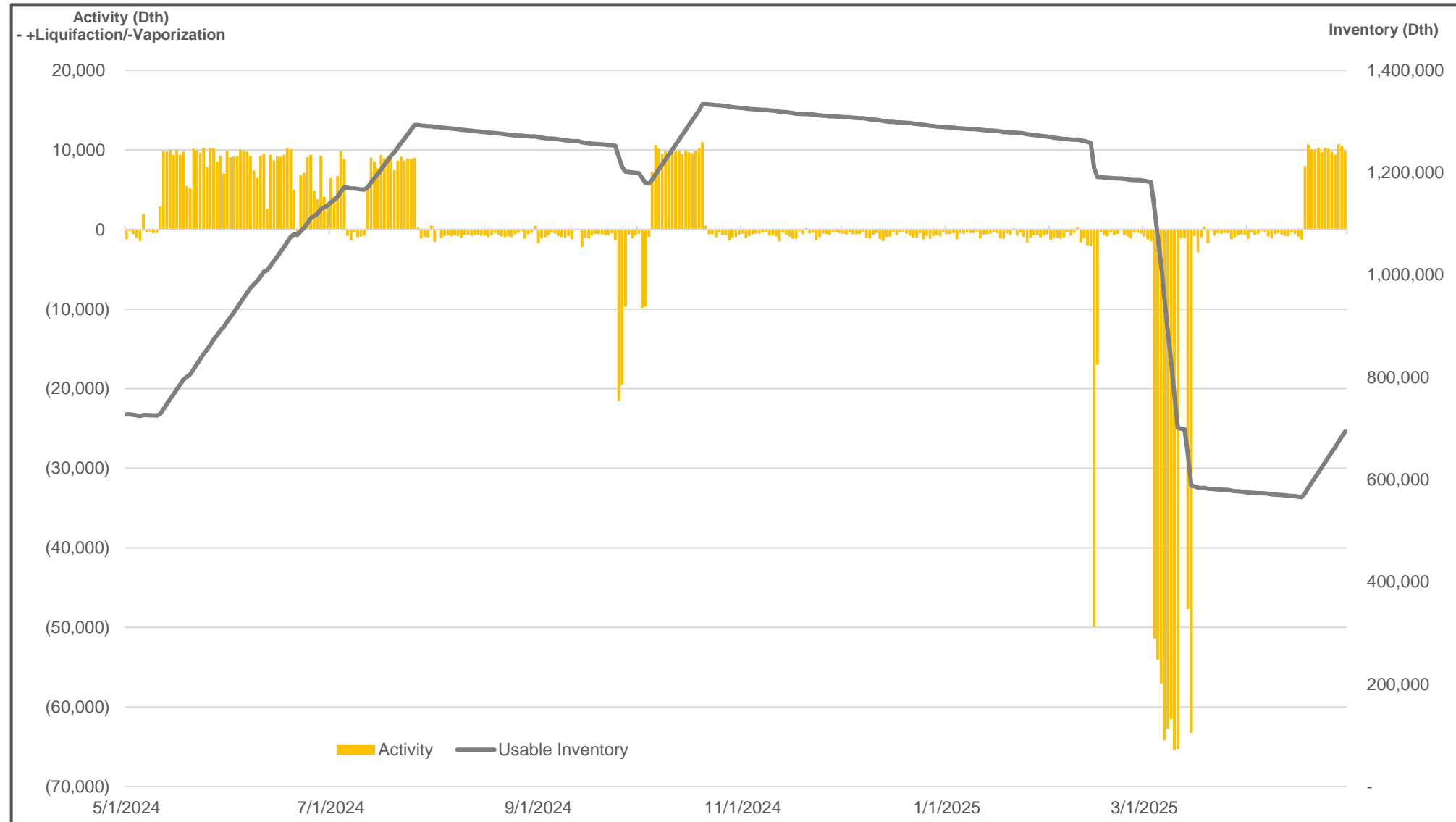
# Clay Basin Activity 2024-2025 Heating Season



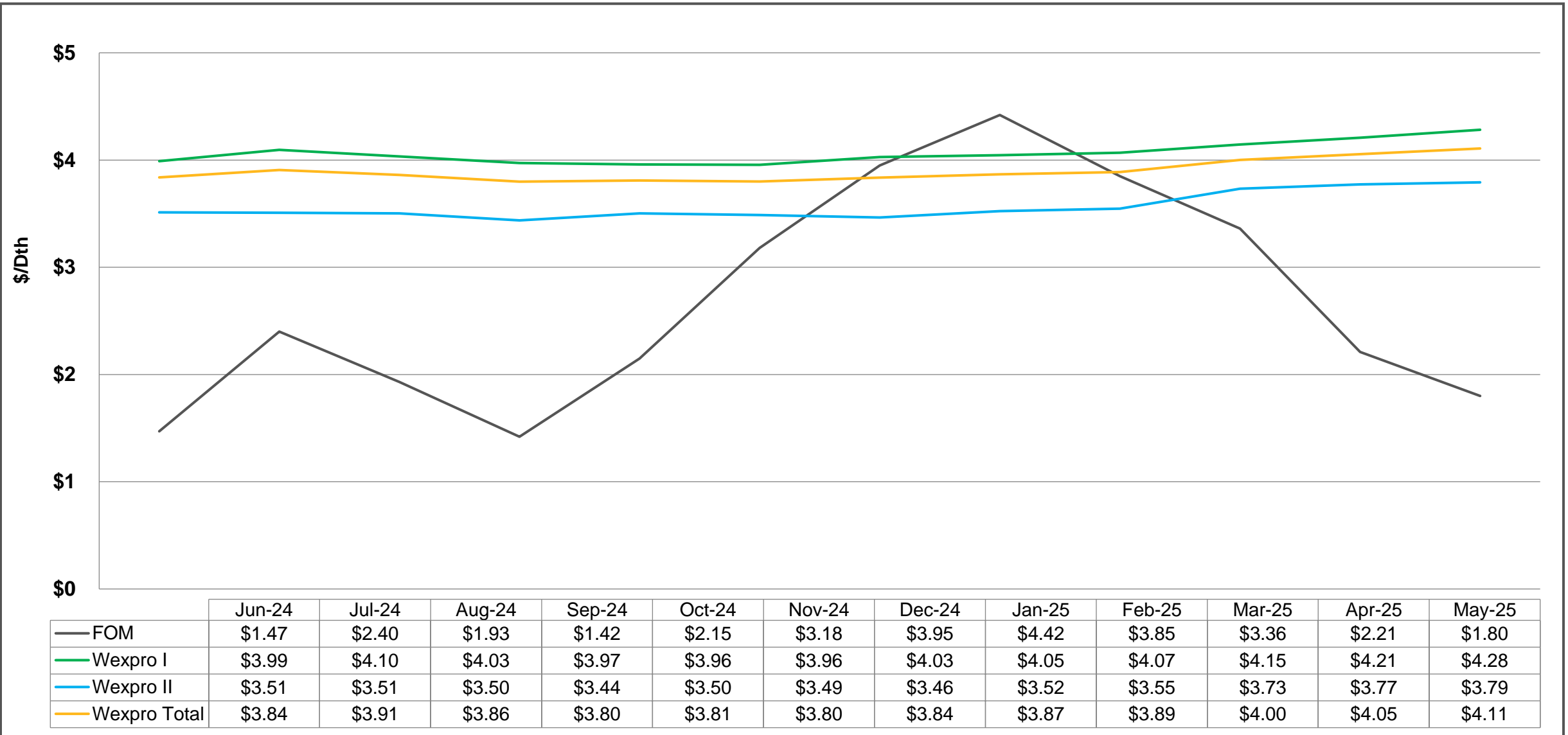
# Aquifer Activity 2024-2025 Heating Season



# LNG Activity May 2024 – April 2025



# FOM vs. Cost-of-Service Gas IRP Year 2024 - 2025



# Q&A

---



Tomorrow is on.<sup>SM</sup>

