

The Federal Railroad Administration's Office of Safety, Highway-Rail Crossing and Trespasser Programs Division, serves as the National Highway-Rail Crossing Information Center. The address is:

Federal Railroad Administration
Office of Safety
Highway-Rail Crossing and Trespasser Programs Division
400 7th Street, S.W., (RRS-23)
Washington, D.C. 20590

1.5 Definitions of Highway-Rail Intersections

For the National Crossing Inventory purposes, the following definitions apply for all public, private and pedestrian crossings, with or without crossing signs or active warning devices.

A highway-rail crossing is the intersection (at grade or grade separated) of a roadway (including associated sidewalks and pathways) and one or more railroad tracks. A crossing at a dual or multi-lane roadway is reported as a single crossing. Also, a crossing is reported as a "single crossing" even where there are multiple tracks within the limits of a single set of crossing signs or warning devices and even if the individual tracks belong to more than one railroad company or track owner. (For further discussion of this latter point, see Section 2.3 of this manual.) As a minimum, all at-grade crossings of public and private roads and streets with railroad tracks across are assigned an inventory number if any railroad operations are conducted.

As a general rule, and if no other agreement exists, a crossing that is located (usually equally) on a State, county and/or city boundary line should be considered to be geographically located in the jurisdiction that is South or East of the crossing.

NOTE:

49 CFR Part 234.5(a) provides the following definition:

"Highway-rail grade crossing means a location where a public highway, road, street, or private roadway, including associated sidewalks and pathways, crosses one or more railroad tracks at grade."

For the purposes of the Inventory only, the following definitions apply:

A. Public Crossing.









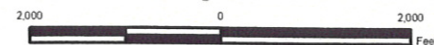
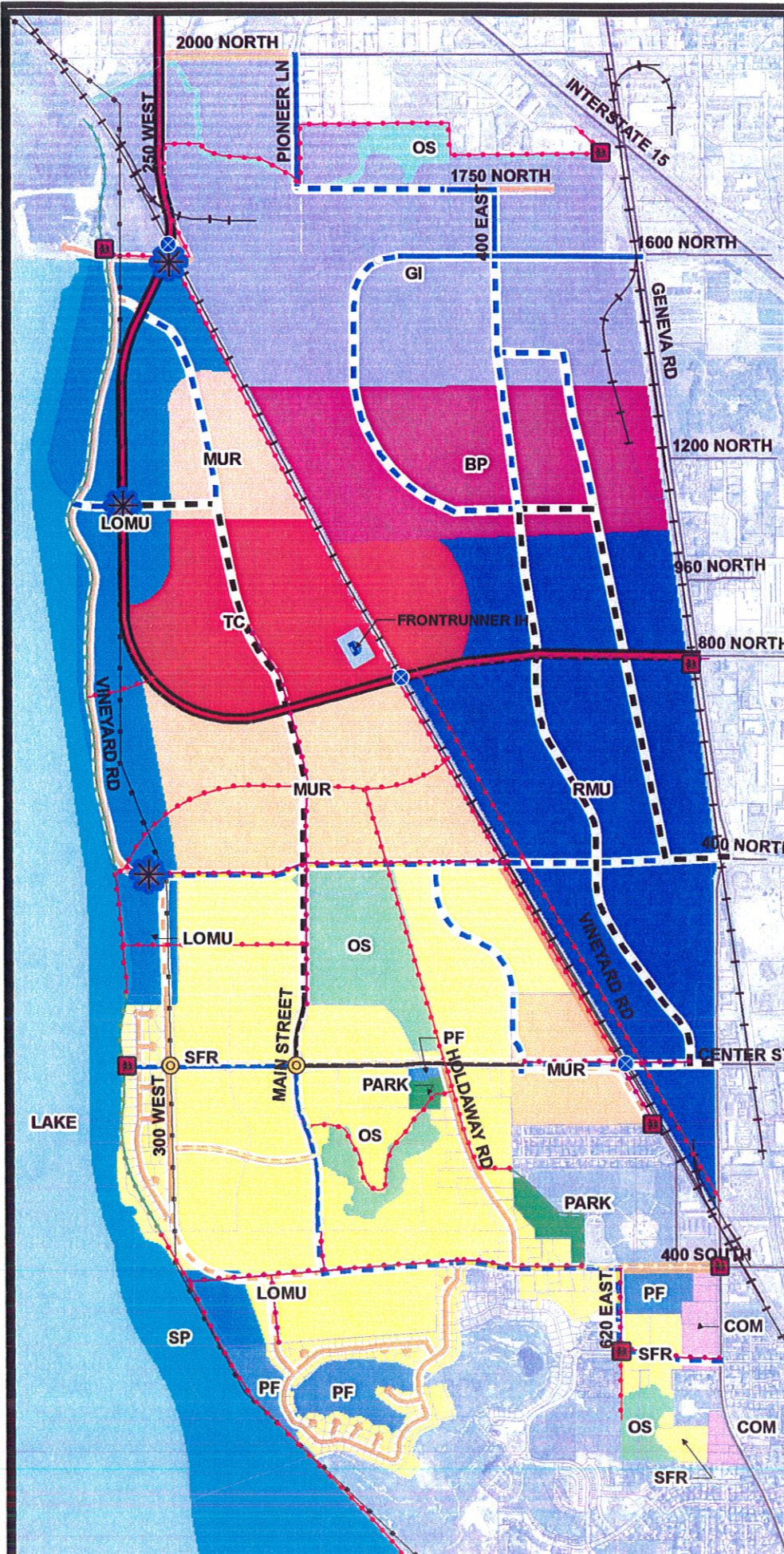












LANDUSE

- LAKE ACTIVITY AREAS
- BP - BUSINESS PARK
- COM - COMMERCIAL
- GI - GENERAL INDUSTRIAL
- LAKE
- LOMU - LAKE ORIENTED MIXED USE
- MUR - MIXED USE RESIDENTIAL
- OS - OPEN SPACE
- PARK
- PF - PUBLIC FACILITY
- RMU - REGIONAL MIXED USE
- SP - SHORELINE PROTECTION
- SFR - SINGLE FAMILY RESIDENTIAL
- TC - TRANSIT CENTER

ROADWAYS

- TRAIL ACCESS
- TRAILS
- DEDICATED EXISTING
- DEDICATED FUTURE
- ON STREET EXISTING
- ON STREET FUTURE
- FRONTRUNNER INTERMODAL HUB
- RAILROAD
- ROUNDABOUTS
- GRADE-SEPARATED RR CROSSING
- VINEYARD CONNECTOR
- ARTERIAL**
 - EXISTING
 - FUTURE
- COLLECTOR**
 - EXISTING
 - FUTURE
 - RECONSTRUCT
- LOCAL**
 - EXISTING
 - FUTURE
- Power Lines

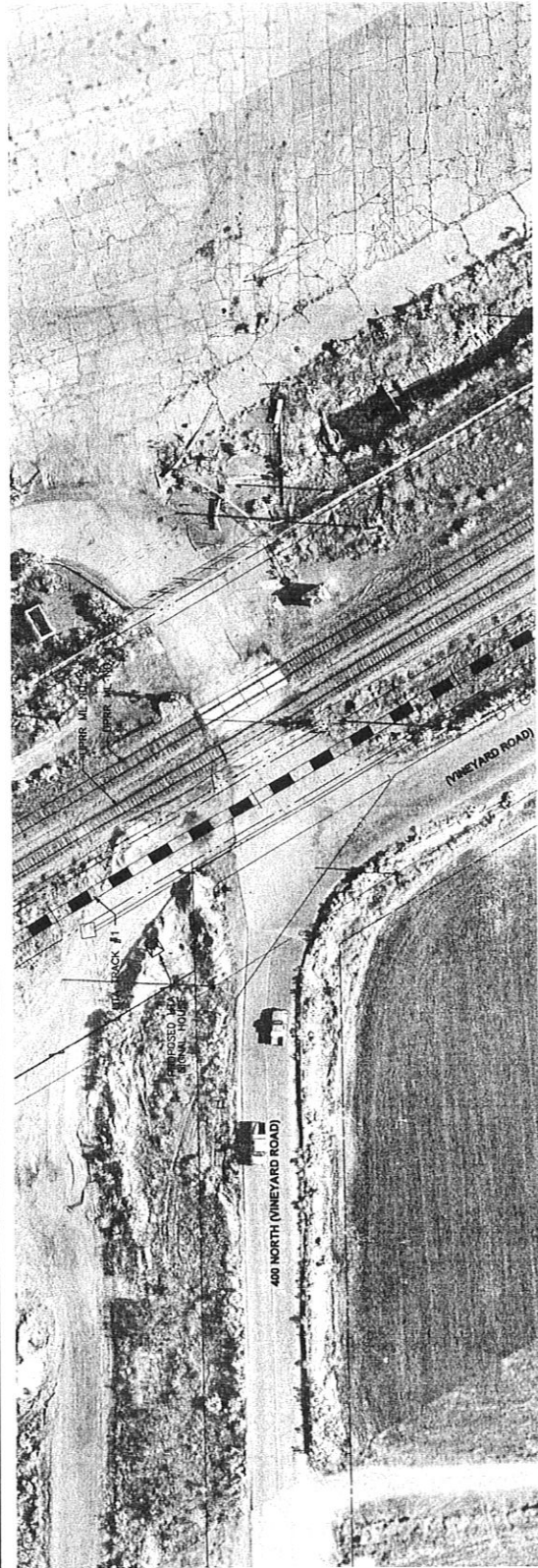


TOWN OF VINEYARD GENERAL PLAN



ADOPTED 26 NOV 08

J-U-B ENGINEERS, Inc.
ENGINEERS • SURVEYORS • PLANNERS



- NOTES:**
1. RESTORE ALL DISTURBED GROUND SURFACES TO ORIGINAL CONDITION.
 2. COORDINATE ALL SIGNAL WORK WITH UPRR BEFORE BEGINNING WORK.
 3. COORDINATE ASPHALT PAVING WORK AT EXISTING CROSSING WITH UPRR BEFORE BEGINNING FINAL SURFACING.

RELATED DRAWINGS:
- NONE

CROSSING REMOVAL NOTES:

- (A) REMOVE CROSSING GATE & SIGNAL
- (B) REMOVE CROSSING
- (C) REMOVE ASPHALT PAVEMENT
- (D) REMOVE CONCRETE CURB AND GUTTER
- (E) REMOVE CONCRETE SIDEWALK
- (F) REMOVE CONCRETE MEDIAN ISLAND
- (G) REMOVE DRIVEWAY
- (H) SAWCUT PAVEMENT
- (I) REMOVE TRACK
- (J) REMOVE CONCRETE CROSSING PANELS, BY OTHERS
- (K) REMOVE CROSSING GATE & SIGNAL, BY OTHERS
- (L) REMOVE CONCRETE BARRIER
- (M) REMOVE PED RAMP
- (N) REMOVE GUARDRAIL

CROSSING CONSTRUCTION NOTES:

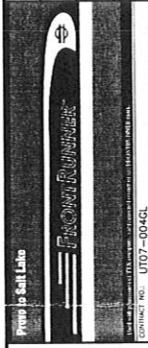
- (1) CONCRETE CURB, TYPE B3
- (2) CONCRETE FLATWORK, 4 IN THICK
- (3) ASPHALT PAVEMENT SECTION
- (4) FLOWABLE END SECTION
- (5) CROSSING GATE & SIGNAL
- (6) CONCRETE CROSSING PANELS
- (7) PROPOSED DRIVEWAY
- (8) CONCRETE SIDEWALK
- (9) TRAFFIC SIGNAL
- (10) CONCRETE CURB AND GUTTER, TYPE B1
- (11) CONCRETE CURB, TYPE M2
- (12) PARK STRIP
- (13) W-BEAM GUARDRAIL
- (14) CONCRETE BARRIER
- (15) RELOCATE CONCRETE BARRIER
- (16) PEDESTRIAN ACCESS RAMP
- (17) DETECTABLE WARNING SURFACE
- (18) CROSSING SIGNAL
- (19) LOCKED GATE
- (20) CONCRETE CURB AND GUTTER, APMA TYPE E
- (21) ASPHALT SIDEWALK
- (22) MEDIAN
- (23) GRAVEL ROADWAY
- (24) CROSSING GATE & SIGNAL, BY OTHERS
- (25) CONCRETE CROSSING PANELS, BY OTHERS

AT-GRADE CROSSING TO BE CLOSED (PENDING)

GRADE CROSSING APPROVAL GROUP 7 - SUBMITTED: 4/01/09

REV	DATE	DESCRIPTION

**GRADE
APPROVAL
DRAWINGS**



DESIGNED BY	JEB
DRAWN BY	JEB
CHECKED BY	EEW
APPROVED BY	

PROVO TO SALT LAKE
FRONT RUNNER PROJECT
AT GRADE CROSSING LAYOUT
400 NORTH (VINEYARD)
AAR CROSSING NO. 25490.3N
UPRR MILEPOST 708.19

SHEET	AS SHOWN
SECTION	SECTION 140
DATE	04-01-09
PROJECT NO.	CTGC14A
SHEET NO.	

