

400 NORTH PUBLIC RAILROAD CROSSING

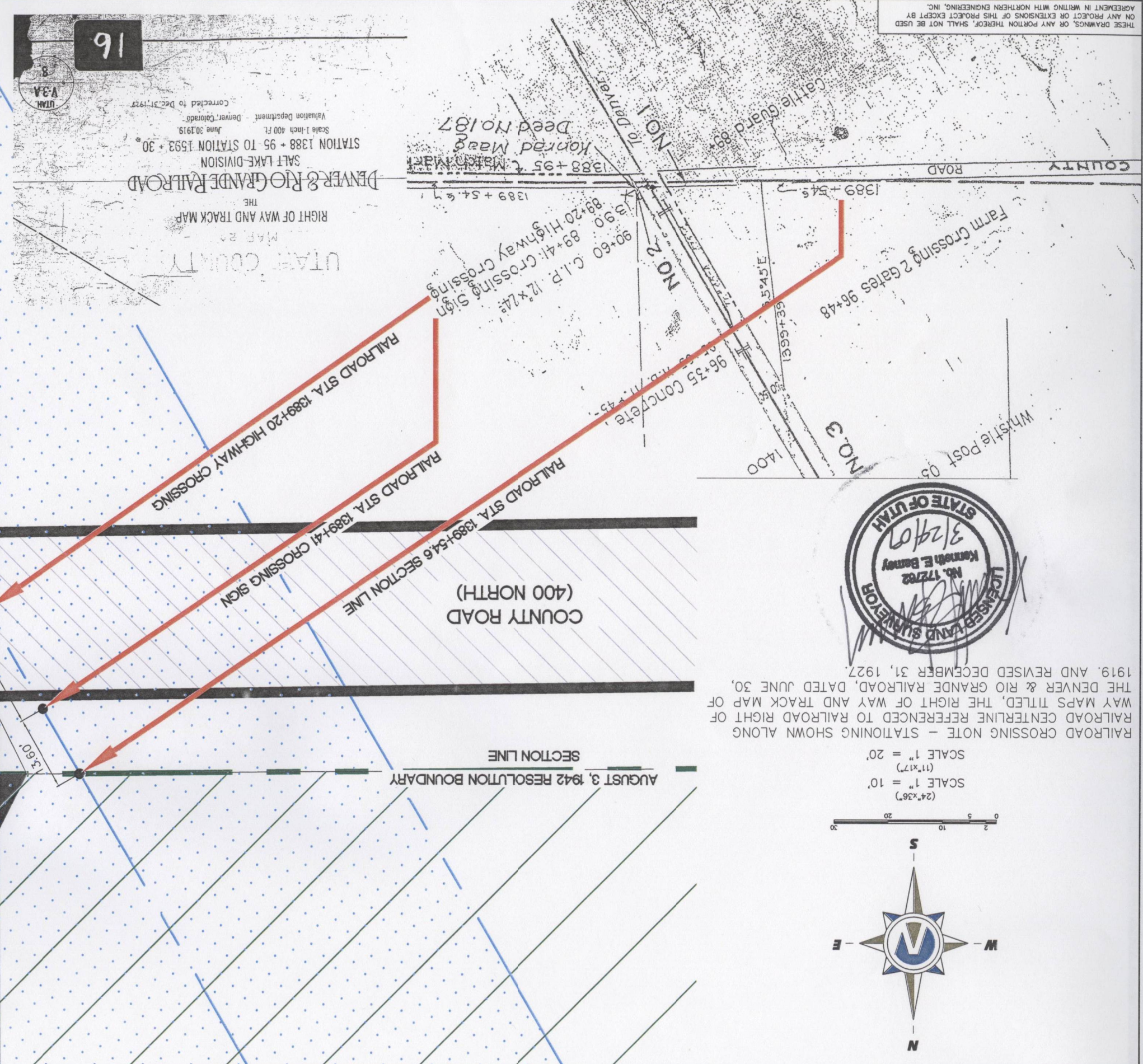
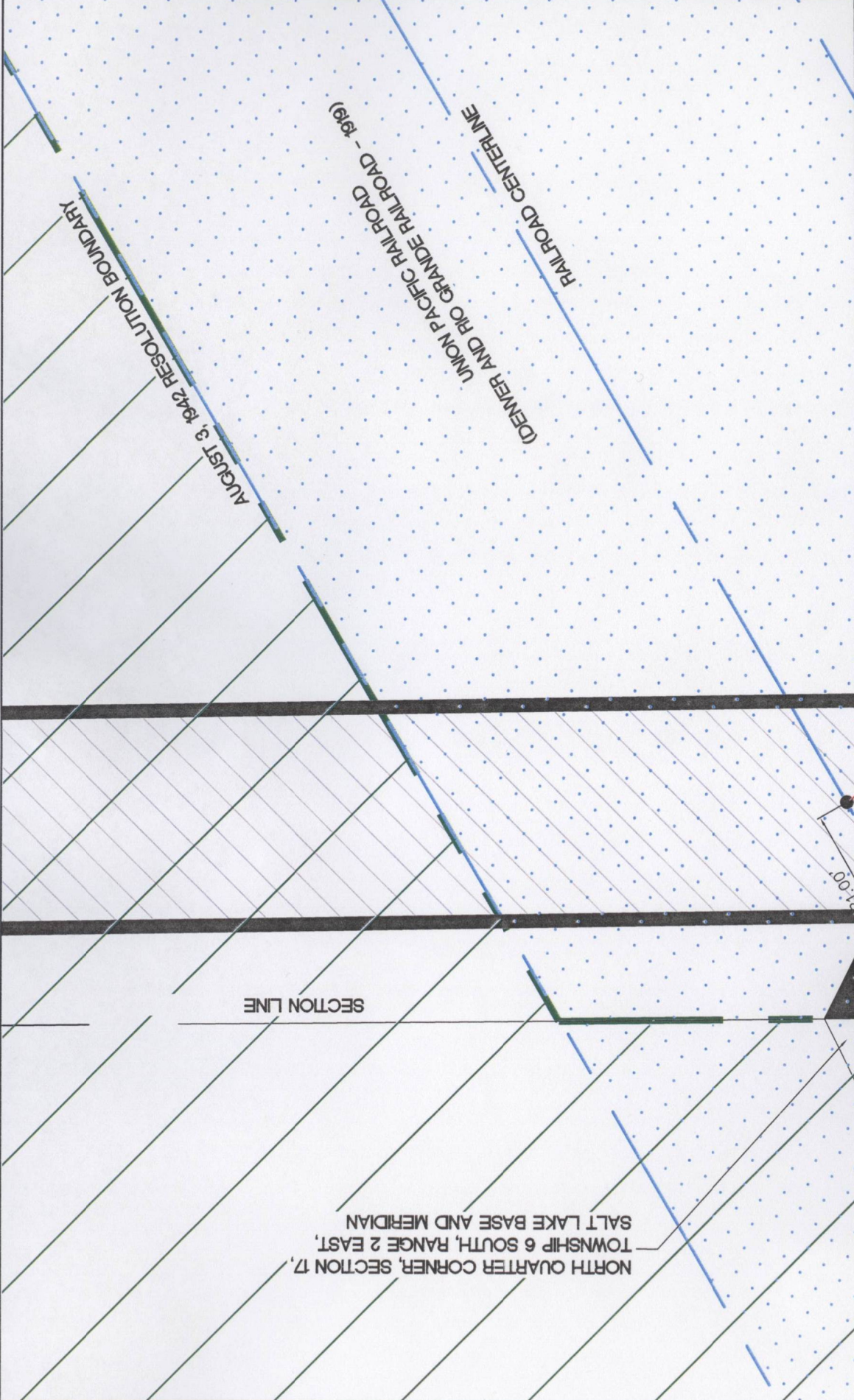
Northern ENGINEERING INC
ENGINEERING-LAND PLANNING
CONSTRUCTION MANAGEMENT
1040 E. 800 N.
OREM, UTAH 84097
(801) 802-8992



NO.	REVISIONS	DATE	BY
1			
2			
3			
4			
5			

DESIGNED BY: DATE: DRAWN BY: DATE: CHECKED BY: DATE: APPROVED: DATE: GOOD FILE: DATE: REV. GOOD FILE: DATE: 3/24/2009 1:21:03 PM

THESE DRAWINGS, OR ANY PORTION THEREOF, SHALL NOT BE USED ON ANY PROJECT OR EXTENSIONS OF THIS PROJECT EXCEPT BY AGREEMENT IN WRITING WITH NORTHERN ENGINEERING, INC.



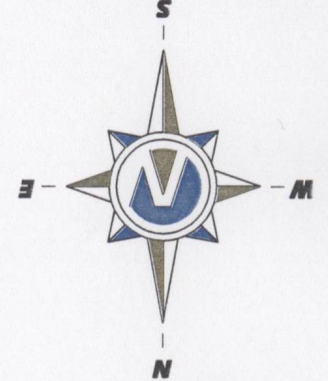
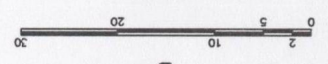
16
UTAH COUNTY
RIGHT OF WAY AND TRACK MAP
SALT LAKE DIVISION
DENVER & RIO GRANDE RAILROAD
STATION 1388 + 95 TO STATION 1593 + 30
Scale 1 inch 400 Ft.
June 30, 1919
Valuation Department - Denver, Colorado
Corrected to Dec. 31, 1927
UTAH
V-3A
8

NO. 1 TO DENVER
NO. 2
NO. 3
Whistle Post 05
CATTLE GUARD 88
Farm Crossing 2 Gates 96+48
1389+54.5
1389+54.6
1389+54.7
1389+54.8
1389+54.9
1389+55.0
1389+55.1
1389+55.2
1389+55.3
1389+55.4
1389+55.5
1389+55.6
1389+55.7
1389+55.8
1389+55.9
1389+56.0
1389+56.1
1389+56.2
1389+56.3
1389+56.4
1389+56.5
1389+56.6
1389+56.7
1389+56.8
1389+56.9
1389+57.0
1389+57.1
1389+57.2
1389+57.3
1389+57.4
1389+57.5
1389+57.6
1389+57.7
1389+57.8
1389+57.9
1389+58.0
1389+58.1
1389+58.2
1389+58.3
1389+58.4
1389+58.5
1389+58.6
1389+58.7
1389+58.8
1389+58.9
1389+59.0
1389+59.1
1389+59.2
1389+59.3
1389+59.4
1389+59.5
1389+59.6
1389+59.7
1389+59.8
1389+59.9
1389+60.0

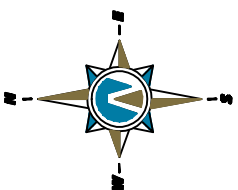


RAILROAD CROSSING NOTE - STATIONING SHOWN ALONG RAILROAD CENTERLINE REFERENCED TO RAILROAD RIGHT OF WAY MAPS TITLED, THE RIGHT OF WAY AND TRACK MAP OF THE DENVER & RIO GRANDE RAILROAD, DATED JUNE 30, 1919, AND REVISED DECEMBER 31, 1927.

SCALE 1" = 10'
(24"x36")
SCALE 1" = 20'
(11"x17")



NORTH QUARTER CORNER, SECTION 17, TOWNSHIP 6 SOUTH, RANGE 2 EAST, SALT LAKE BASE AND MERIDIAN



(24"x36")
 SCALE 1" = 50'
 (1"=17')
 SCALE 1" = 100'

THESE DRAWINGS, OR ANY PORTION THEREOF, SHALL NOT BE USED ON ANY PROJECT OR EXTENSIONS OF THIS PROJECT EXCEPT BY AGREEMENT IN WRITING WITH NORTHERN ENGINEERING, INC.

NO.	REVISIONS	BY	DATE	DESIGNED BY:	DATE:
5					
4					
3					
2					
1					



Northern
ENGINEERING INC
 ENGINEERING, LAND PLANNING
 CONSTRUCTION MANAGEMENT

1040 E. 800 N.
 OREM, UTAH 84097
 (801) 802-8992

EAST LAKE AT GENEVA
INDUSTRIAL BUSINESS PARK

RAILROAD CROSSINGS GENEVA ROAD	JOB NO. 3-07-045-00
VINEYARD, UTAH	SHEET NO. 1 OF 1



RAILROAD CROSSING NOTE - STATIONING SHOWN ALONG RAILROAD CENTERLINE REFERENCED TO RAILROAD RIGHT OF WAY MAPS TITLED, THE RIGHT OF WAY AND TRACK MAP OF THE DENVER & RIO GRANDE RAILROAD, DATED JUNE 30, 1919. AND REVISED DECEMBER 31, 1927.