



*Timothy K. Clark*  
*Senior Attorney*  
*1407 W. North Temple, Suite 320*  
*Salt Lake City, UT 84116*  
*801-220-4565 Office*  
*Tim.Clark@pacificorp.com*

***VIA ELECTRONIC FILING***

December 8, 2022

Gary Widerburg  
Commission Administrator  
Public Service Commission of Utah  
Heber M. Wells Building, 4<sup>th</sup> Floor  
160 East 300 South  
Salt Lake City, Utah 84111-2305

Re: PacifiCorp Notice of Affiliate Transaction — PacifiCorp and Bridger Coal Company  
Docket No. 05-035-54

Dear Mr. Widerburg:

Pursuant to Commitment U3(2), incorporated in the Public Service Commission of Utah's *Report and Order* approving the *Acquisition of PacifiCorp by MidAmerican Energy Holdings Company*, issued January 27, 2006, as amended March 14, 2006, and June 5, 2006, PacifiCorp hereby provides notice of an affiliated interest transaction between itself and Bridger Coal Company.

PacifiCorp entered into an agreement with its affiliate Bridger Coal Company to purchase one MagneTek Viking Power 3-Phase 60 hertz (Hz) transformer and one General Electric 3-Phase 60 Hz transformer (collectively, the Transformers). Bridger Coal Company no longer has use for these Transformers as its underground mining operations have ended. In contrast PacifiCorp has need for the Transformers as reserves to ensure electrical service to its customers is not unreasonably interrupted. The purchase and sale agreement (the Agreement), bill of sale and invoice (#18518) are included with this notice respectively as Attachment A, Attachment B and Attachment C.

PacifiCorp, an Oregon corporation, is the direct 100 percent owner of Pacific Minerals, Inc., a Wyoming corporation. In turn Pacific Minerals, Inc., holds a 66.7 percent ownership interest in Bridger Coal Company, a Wyoming joint venture company. Therefore, PacifiCorp's indirect ownership interest in Bridger Coal Company through Pacific Minerals, Inc., creates an affiliated interest between PacifiCorp and Bridger Coal Company.

Bridger Coal Company originally purchased the equipment for \$556,193. The value of the equipment to be purchased by PacifiCorp, doing business as Rocky Mountain Power, under the Agreement is approximately \$355,950. Bridger Coal Company offered the specified equipment to PacifiCorp at the best cost and terms when compared to other options on the market, along with a premium that benefits PacifiCorp's customers. Thus, the use of Bridger Coal Company as supplier of the Transformers under the Agreement is in the public interest.

Please do not hesitate to contact me if you have any questions.

Sincerely,



Timothy K. Clark  
Senior Attorney  
PacifiCorp

Enclosures:

Attachment A.pdf

Attachment B.pdf

Attachment C.pdf

cc: Chris Parker, DPU  
Michele Beck, OCS

ATTACHMENT A

to

PacifiCorp Notice of Affiliate Transaction

**PURCHASE AND SALE AGREEMENT  
(TRANSFORMERS)**

**THIS PURCHASE AND SALE AGREEMENT** (“**Agreement**”), dated 24 of October, 2022 (“**Effective Date**”), is executed and delivered by and between Bridger Coal Company (“**Seller**”), a joint venture of Pacific Minerals, Inc., a Wyoming corporation and wholly owned subsidiary of Buyer, and Idaho Energy Resources Co., a Wyoming corporation, and PacifiCorp, an Oregon corporation (“**Buyer**,” together the “**Parties**,” and each individually a “**Party**”).

WHEREAS, Seller is the owner of one MagneTek Viking Power 3-Phase 60 HZ transformer, and one General Electric 3-Phase 60 HZ transformer located at 932 Nine Mile Road, Point of Rocks, Wyoming 82942 (“**Transformers**”).

WHEREAS, Seller has agreed to sell, and Buyer has agreed to buy, all of Seller’s right, title and interest in the Transformers.

NOW, THEREFORE, in consideration of the mutual promises and agreements contained herein, and other good and valuable consideration, the receipt and sufficiency of which are hereby acknowledged, the Parties, intending to be legally bound, hereby agree as follows:

1. Purchase and Sale of Equipment. Seller hereby sells, conveys, transfers, and assigns, including all of Seller’s rights in and to the Transformers described on Schedule A (the “**Sold Equipment**”) attached hereto, to Buyer, and Buyer accepts all of Seller’s right, title and interest in and to the Sold Equipment. Payment of the Payment amount shall be made by Seller to Buyer within five (5) business days of the execution of this agreement by all Parties.
2. Title; Delivery; Costs. Title and risk of loss (including responsibility to insure) to the Sold Equipment shall transfer to Buyer on the Effective Date. Buyer shall take delivery from Seller at the current location of the Sold Equipment. Buyer shall be responsible for all costs related to the Sold Equipment from and after the Effective Date.
3. Covenants. Seller hereby covenants to be bound by and comply with this Agreement in respect of the Sold Equipment.
4. Successors and Assigns. The terms and provisions of this Agreement are binding upon, inure to the benefit of, and are enforceable by the Parties and their respective successors and permitted assigns.
5. Amendment. This Agreement may not be amended, supplemented or modified except by an instrument in writing signed on behalf of Seller and Buyer.
6. Severability; Modification. If any term or provision of this Agreement is invalid, illegal, or incapable of being enforced by law or public policy, all other terms and provisions of this Agreement shall nevertheless remain in full force and effect so long as the legal substance of the transactions contemplated hereby is not affected in any matter materially adverse to any Party. Upon such determination that any term or provision is invalid, illegal or incapable of being enforced, the Parties shall negotiate in good faith to modify this Agreement so as to affect the original intent of the Parties as closely as possible in an acceptable manner in order that the

transactions contemplated hereby are consummated as originally contemplated to the greatest extent possible.

7. Governing Law. This Agreement shall be governed by and construed in accordance with the Laws of the State of Wyoming without reference to any conflicts of law provisions.

8. Jury Trial Waiver. TO THE FULLEST EXTENT PERMITTED BY LAW, EACH OF THE PARTIES HERETO WAIVES ANY RIGHT IT MAY HAVE TO A TRIAL BY JURY IN RESPECT OF LITIGATION DIRECTLY OR INDIRECTLY ARISING OUT OF, UNDER OR IN CONNECTION WITH THIS AGREEMENT. EACH PARTY FURTHER WAIVES ANY RIGHT TO CONSOLIDATE ANY ACTION IN WHICH A JURY TRIAL HAS BEEN WAIVED WITH ANY OTHER ACTION IN WHICH A JURY TRIAL CANNOT BE OR HAS NOT BEEN WAIVED.

[signature page follows]

IN WITNESS WHEREOF, the Parties have caused this Agreement to be duly executed by their authorized representatives as of the date first above written.

**SELLER:**

Bridger Coal Company,  
a Wyoming joint venture

By: Jon C. Brown

Name: Jon C. Brown

Title: General Manager

**BUYER:**

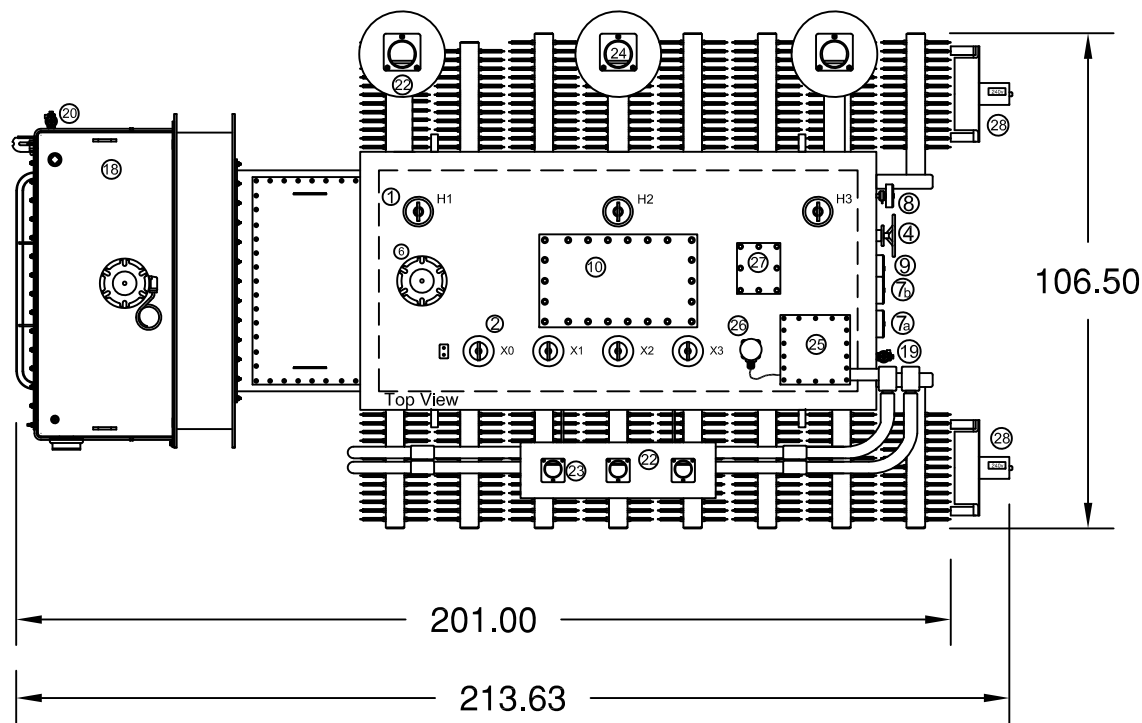
PACIFICORP  
an Oregon corporation

By: Russell Updike

Name: Russell Updike

Title: Director

# Schedule A



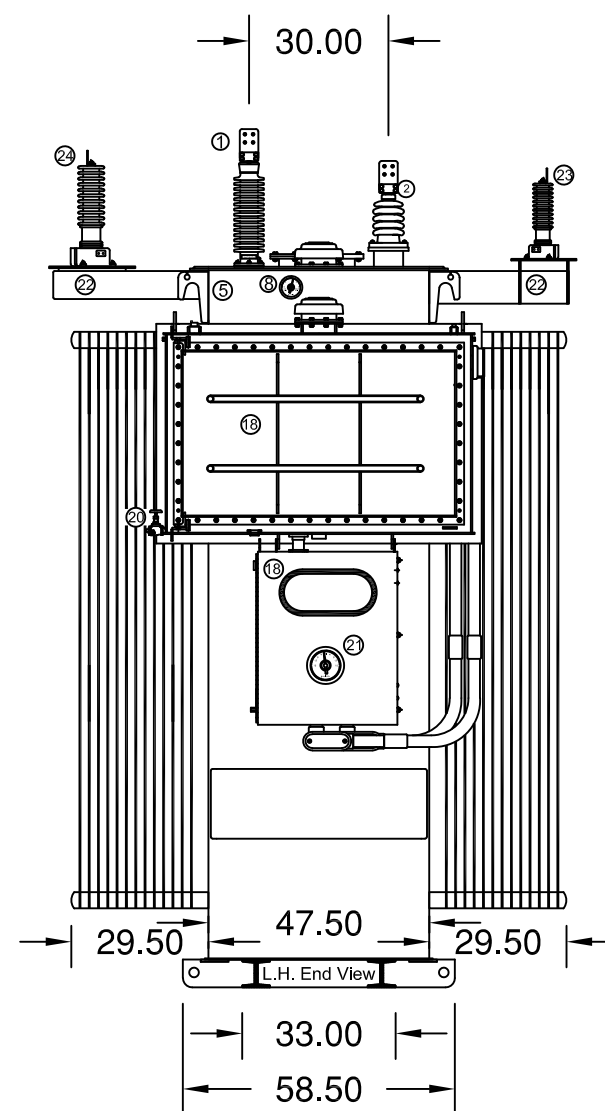
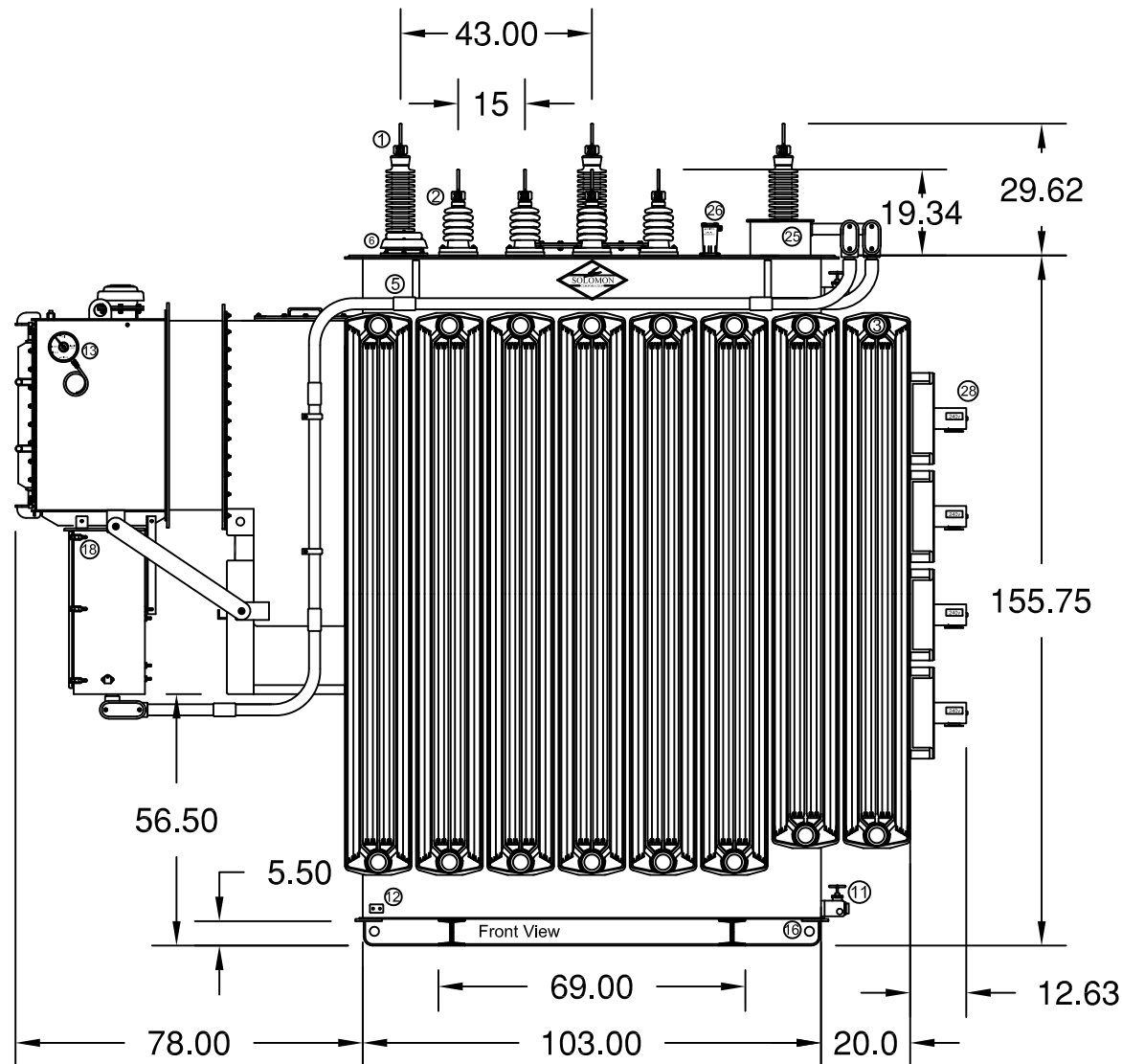
# THREE PHASE SUBSTATION TRANSFORMER

15000/20000 KVA AT 65° C RISE OA/FA  
 PRIMARY VOLTAGE: 34500 DELTA BIL: 200 KV  
 SECONDARY VOLTAGE: 12470Y/7200 BIL: 110 KV  
 PRIMARY TAPS: + - 5% FCAN & BN  
 SECONDARY TAPS: +-16 @ 5/8% Taps  
 HERTZ : 60 CYCLES

**WEIGHTS & GALS.**  
 MAIN OIL GAL : 3024  
 LTC OIL GAL : 170  
 C & C WT : 36625  
 TANK WT : 26800  
 OIL WT : 23955  
 TOTAL WT : 87380

**NOTE:**  
 1. Arrestors and Arrestor brackets not shown on Front View.

1	35 KV HV LAPP Bushings 1.125" Stud w/4Hole Spade Solomon # 821
2	15 KV LV Bushings 1.125" Stud w/4Hole Spade Warco #41A05099-9
3	Cooling Radiators
4	HV TapChanger Handle (De-Energized Operation) Right End of Tank
5	Lifting Hooks
6	Explosion Relief Device Sol. # 849
7	Qualitrol (a) Oil Temp. #104-317-01 (b) Winding Temp #104-318-01
8	Main Tank Pressure/Vac Gauge w/Bleeder Solomon# 142
9	Main Tank Liquid Level Gauge Solomon# 1205
10	Bolt-On Inspection/Manhole Cover ( 34" X 20" )
11	Drain Valve ( Main Tank )
12	Grounding Pad
13	LTC Tank Liquid Level Gauge Solomon# 1205
14	Laser Etched Nameplate ( Anodized Aluminum ) Right end of tank
15	LTC Liquid Temperature Gauge Solomon# 173
16	Jacking Pads
17	LTC Tank Pressure/Vac. Gauge (N/A - Unit is Free Breathing)
18	LTC Tank and Control Cabinet w/ Fan Controls
19	Top Fill Valve (Main Tank)
20	Drain Valve (LTC Tank)
21	LTC Position Indicator
22	HV & LV Arrestor Brackets
23	LV Arrestors 15 KV (12.7 KV MCOV) #217 013
24	HV Arrestors 27 KV (22 KV MCOV) #217 022
25	Terminal Block-CT Wiring Junction Box
26	Rapid Pressure Rise Relay Qualitrol # 910-010-03
27	Core Ground Bushing Enclosure
28	Krenz Cooling Fans (7) #F16-A7839 .25HP / 1750 RPM / 230v
29	



**SOLOMON CORPORATION**  
 SOLOMON, KANSAS  
 (785) 655-2191

SERIAL # 44745  
 JOB # 19947

<p><b>TRANSFORMER VOLTAGES</b></p> <p>PRIMARY 34500 DELTA</p> <p>SECONDARY 12470Y/7200</p>	<p><b>THREE PHASE 60 HERTZ        POWER CLASS LTC TRANSFORMER</b></p> <p>KV-BIL FULL WAVE IMPULSE LEVEL        H1,H2,H3=200 X0,X1,X2,X3=110</p> <p>IMPEDANCE VOLTS <u>8.0</u> %        AT 85°C - 15000KVA 34500 - 12470</p>	<p><b>FULL LOAD CONTINUOUSLY        15000/20000 KVA OA/FA        65°C RISE</b></p>
--	---	--

* HV WINDING CONNECTIONS				LV CONNECTIONS			
WINDING	VOLTS	AMP KVA	DIAL POSITION	CONNECTS	L-L	PHASE CONTACTS ON	REVERSING SWITCH ON
HIGH VOLTAGE DELTA	36225	239.07	1 / A	A TO B	1	1	1
	35363	244.50	2 / B	B TO C	2	2	2
	34500	251.02	3 / C	D TO C	3	3	3
	33638	257.45	4 / D	D TO E	4	4	4
	32775	264.23	5 / E	E TO F	5	5	5

APPROXIMATE WEIGHTS EXPRESSED IN U.S. POUNDS

TOTAL - 87380 lbs.  
 UNTANKING (CORROD.) - 36625 lbs.  
 TANK AND FITTINGS - 26800 lbs.  
 LTC TANK - 170 GALS. MAIN TANK - 3024 - 23955 lbs.

30 DEGREE PHASE SHIFT

HV WINDING: H1, H2, H3  
 LV WINDING: X0, X1, X2, X3

THE 25°C LIQUID LEVEL IS 15.5 INCHES BELOW TOP OF HIGHEST MAN-HOLE FLANGE. LIQUID LEVEL CHANGES 1.12 INCHES FOR EACH 10°C CHANGE IN AVERAGE LIQUID TEMPERATURE. THE MAXIMUM OPERATING PRESSURES OF LIQUID PRESERVATION SYSTEM: 8.0 PSI POS. TO 8.0 PSI NEG. FILLED WITH NON-PCB OIL AT TIME OF REMANUFACTURE. TANK IS SUITABLE FOR 14.7 LBS VACUUM FILLING. \* THE TRANSFORMER MUST NOT BE ENERGIZED FROM ANY VOLTAGE SOURCE WHEN HV TAP CHANGER IS OPERATED. LOC-CT IS 1200S AMP FOR USE WITH LOAD TAP CHANGER. ■ POLARITY MARK

ORIGINAL MFG. - FEDERAL PACIFIC  
 LTC MECHANISM - Refurbished RMV# 1500  
 DATE OF REMFG. - JULY 2005  
 MADE IN U.S.A.

Nameplate Actual Size - 12" x 17.0"

DATE	REVISIONS/NOTES	DATE	REVISIONS/NOTES

DRAWN BY: <b>Trent</b>	DATE: <b>08/02/2005</b>
DRAWING DESCRIPTION: <b>Tank/Nameplate</b>	DRAWING FORMAT: <b>AutoCAD LT2002</b>





**TRANSFORMER VOLTAGES**

**PRIMARY**

34500 DELTA

**SECONDARY**

12470Y/7200

**THREE PHASE 60 HERTZ  
 POWER CLASS LTC TRANSFORMER**

KV-BIL FULL WAVE IMPULSE LEVEL  
 H1,H2,H3= 200 XO,X1,X2,X3=110

IMPEDANCE VOLTS 8.0 %  
 AT 85°C - 15000KVA 34500 - 12470

FULL LOAD CONTINUOUSLY  
 15000/20000 KVA OA/FA  
 65°C RISE

SERIAL # 44745

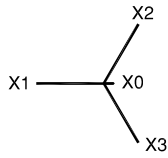
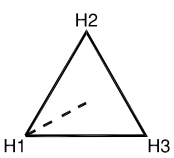
JOB # 19947

**\* HV WINDING CONNECTIONS**

WINDING	VOLTS	AMP 15000 KVA	DIAL POSITION	CONNECTS
HIGH VOLTAGE DELTA	36225	239.07	1 / A	A TO B
	35363	244.90	2 / B	B TO C
	34500	251.02	3 / C	D TO C
	33638	257.45	4 / D	D TO E
	32775	264.23	5 / E	E TO F

**APPROXIMATE WEIGHTS EXPRESSED IN U.S. POUNDS**

TOTAL --- 87380 lbs.  
 UNTANKING (CORE&COIL) --- 36625 lbs.  
 TANK AND FITTINGS --- 26800 lbs.  
 LTC TANK --- 170 GALS.      MAIN TANK --- 3024 GALS. --- 23955 lbs.

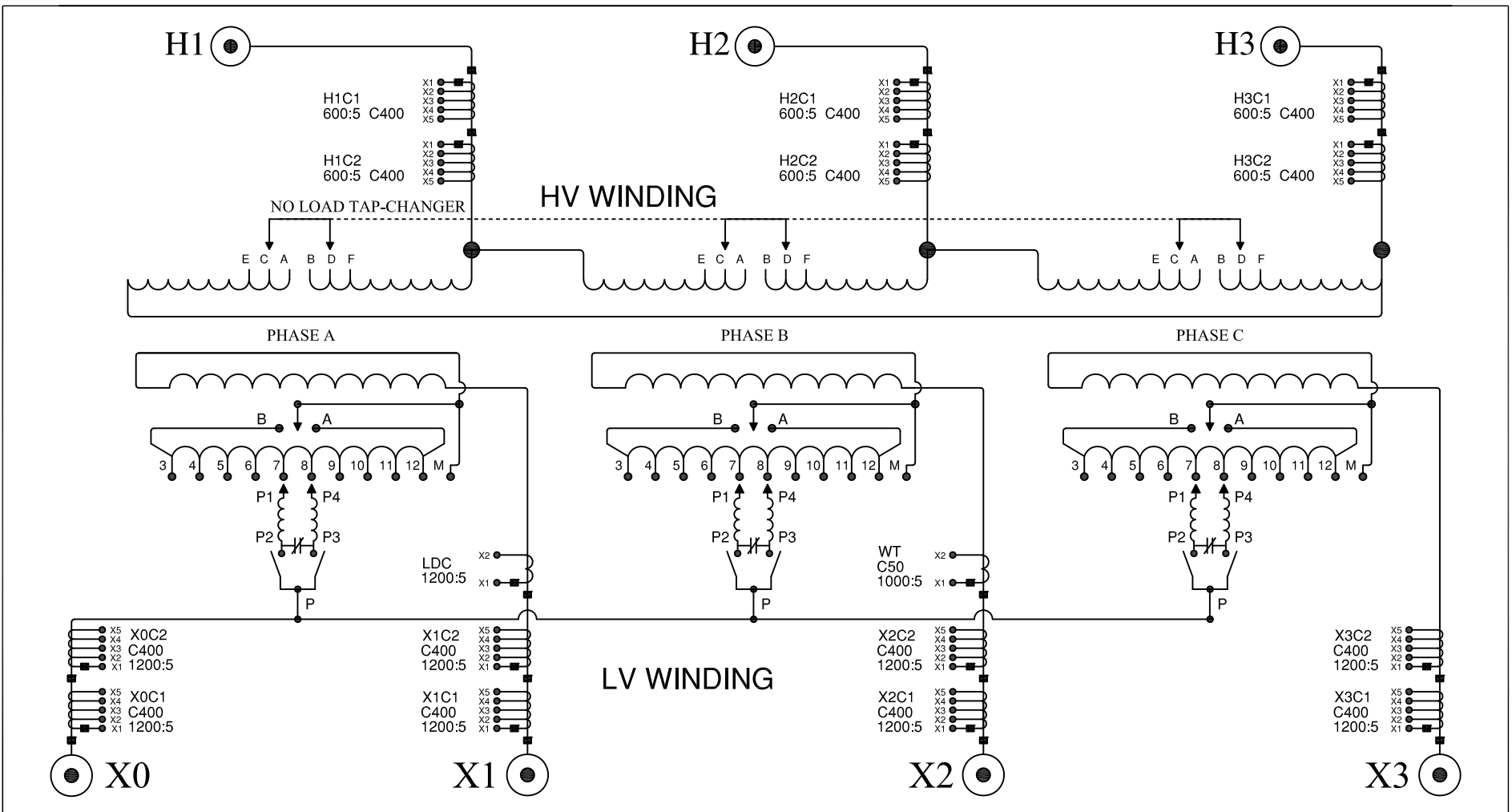


30 DEGREE PHASE SHIFT

**LV CONNECTIONS**

VOLTS L - L	AMPS 15000 KVA	MECHANISM		REVERSING SWITCH ON
		DIAL POS	CONTACTS ON	
13718	631.31	16	11 + 11	B
13640	634.92	15	10 + 11	
13562	638.57	14	10 + 10	
13466	643.12	13	9 + 10	
13406	646.00	12	9 + 9	
13328	649.78	11	8 + 9	
13250	653.60	10	8 + 8	
13172	657.47	9	7 + 8	
13094	661.39	8	7 + 7	
13016	665.35	7	6 + 7	
12938	669.37	6	6 + 6	
12861	673.37	5	5 + 6	
12783	677.48	4	5 + 5	
12705	681.64	3	4 + 5	
12627	685.85	2	4 + 4	
12549	690.12	1	M + 4	
12470		N	M + M	
12393		1	11 + M	A
12315		2	11 + 11	
12237		3	10 + 11	
12159		4	10 + 10	
12081		5	9 + 10	
12003		6	9 + 9	
11925		7	8 + 9	
11847		8	8 + 8	
11769		9	7 + 8	
11691		10	7 + 7	
11613		11	6 + 7	
11535		12	6 + 6	
11458		13	5 + 6	
11380		14	5 + 5	
11302		15	4 + 5	
11224		16	4 + 4	

694.49



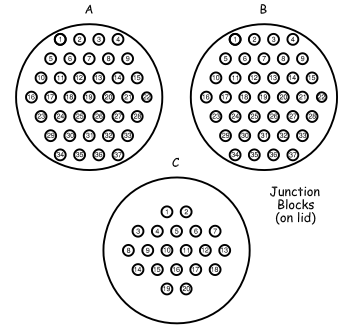
THE 25°C LIQUID LEVEL IS 15.5 INCHES BELOW TOP OF HIGHEST MANHOLE FLANGE.  
 LIQUID LEVEL CHANGES 1.12 INCHES FOR EACH 10°C CHANGE IN AVERAGE LIQUID TEMPERATURE.  
 THE MAXIMUM OPERATING PRESSURES OF LIQUID PRESERVATION SYSTEM 8.0 PSI POS. TO 8.0 PSI NEG.  
 FILLED WITH NON-PCB OIL AT TIME OF REMANUFACTURE. TANK IS SUITABLE FOR 14.7 LBS VACUUM FILLING.  
 \* THE TRANSFORMER MUST NOT BE ENERGIZED FROM ANY VOLTAGE SOURCE WHEN HV TAP CHANGER IS OPERATED.  
 LDC-CT IS 1200:5 AMP FOR USE WITH LOAD TAP CHANGER. ■ = POLARITY MARK

ORIGINAL MFG. - FEDERAL PACIFIC  
 LTC MECHANISM - Reinhausen RMV-II 1500  
 DATE OF REMFG. - JULY 2005  
 MADE IN U.S.A.







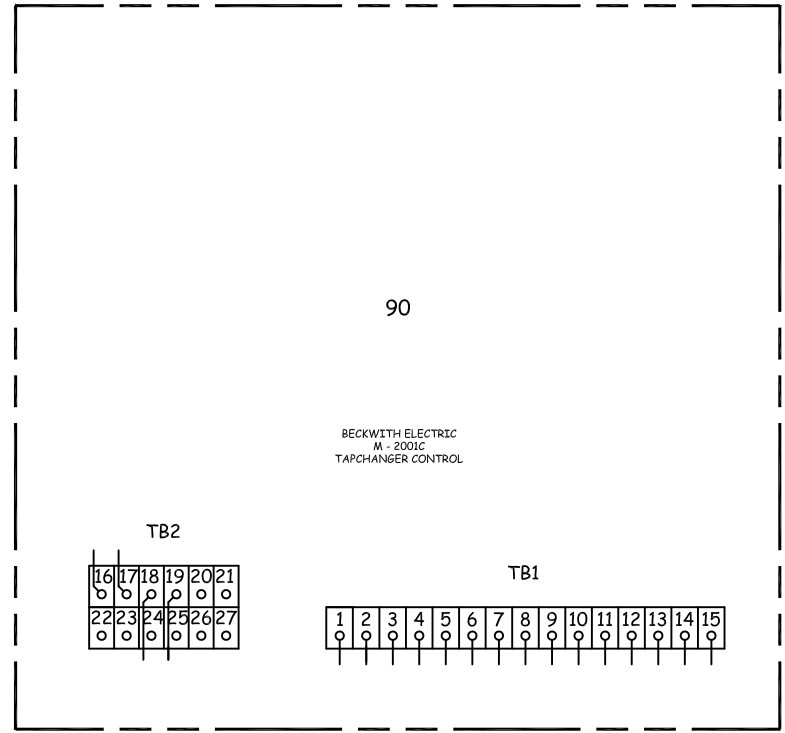
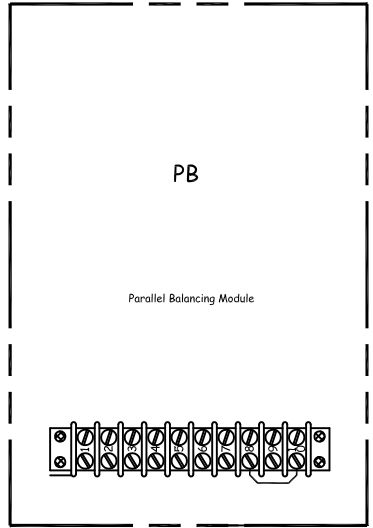


Junction Blocks (on lid)

Current Xfmr's	X1	X2	X3	X4	X5	Junction Block Number				
X1C1	1	2	3	4	5					
X1C2	6	7	8	9	10					
X2C1	11	12	13	14	15					
X2C2	16	17	18	19	20					
X3C1	21	22	23	24	25					
X3C2	26	27	28	29	30					
H1C1	1	2	3	4	5					
H1C2	6	7	8	9	10					
H2C1	11	12	13	14	15					
H2C2	16	17	18	19	20					
H3C1	21	22	23	24	25					
H3C2	26	27	28	29	30					
X0C1	1	2	3	4	5					
X0C2	6	7	8	9	10					
DG C1	11	12	13	14	15					
WT C1	15	16								

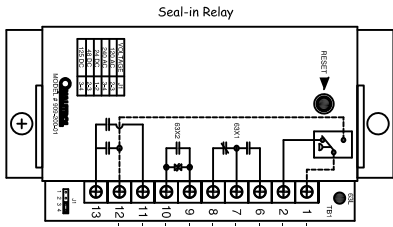
Current Transformers	Tap	500A
X1-X2	100%	100%
X1-X2	200%	100%
X2-X3	200%	100%
X2-X3	400%	100%
X3-X4	400%	100%
X3-X4	800%	100%
X1-X3	200%	100%
X1-X3	400%	100%
X1-X3	800%	100%
X1-X3	1600%	100%

Current Transformers	Tap	1200A
X1-X2	100%	100%
X1-X2	200%	100%
X1-X2	300%	100%
X2-X3	200%	100%
X2-X3	400%	100%
X2-X3	600%	100%
X2-X3	800%	100%
X1-X3	200%	100%
X1-X3	400%	100%
X1-X3	600%	100%
X1-X3	800%	100%

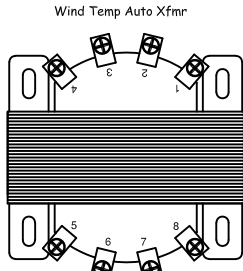


90

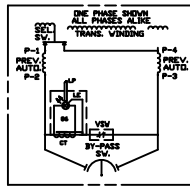
BECKWITH ELECTRIC  
M - 2001C  
TAPCHANGER CONTROL



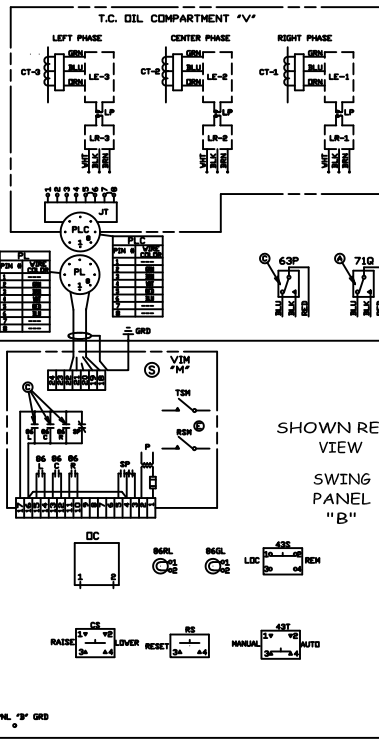
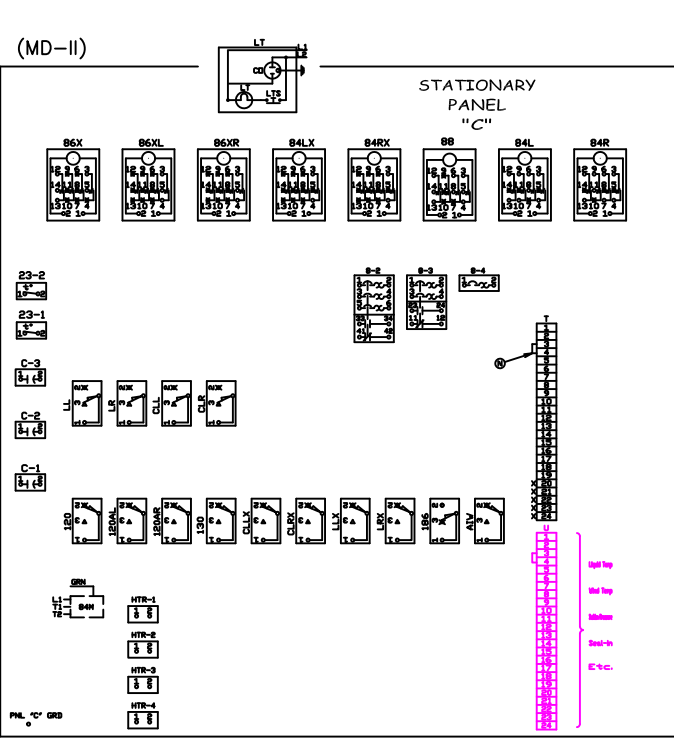
Seal-in Relay



Wind Temp Auto Xfmr



- NOTE:**
- A - CONTACT (BLK-RED) CLOSING ON LOW OIL LEVEL.
  - B - CONTACT MUST BE MANUALLY RESET AFTER TRIPPING.
  - C - WARNING: DO NOT RESET UNTIL LTC HAS BEEN INSPECTED AND PROBLEM CORRECTED.
  - D - MOTOR GROUND TO BE ATTACHED TO THERMOSTAT HARDWARE.
  - E - AUXILIARY CONTACTS.
  - F - SHIELDED CABLE.
  - G - TERMINAL JUMPER (DO NOT REMOVE)
  - H - WARNING: DO NOT HIPOT VIM. DISCONNECT H1, H2, H4, H5 & M7 BEFORE HIPOT TEST.



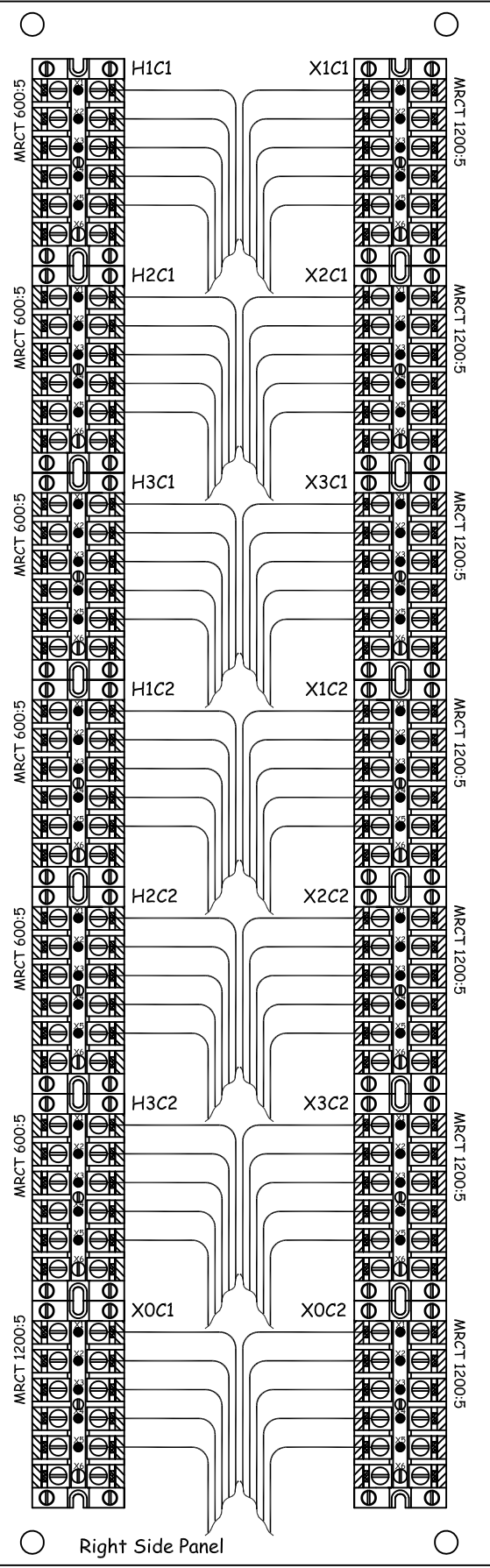
WIRE CONNECTIONS FROM DEVICE TO DEVICE				
WIRE CODE	FROM	TO	TO	TO
VIM BULK 1	BULK 1	BULK 1	BULK 1	BULK 1
VIM BULK 1	BULK 1	BULK 2	BULK 2	BULK 2
VIM BULK 1	BULK 1	BULK 3	BULK 3	BULK 3
VIM BULK 1	BULK 1	BULK 4	BULK 4	BULK 4
VIM BULK 1	BULK 1	BULK 5	BULK 5	BULK 5
VIM BULK 1	BULK 1	BULK 6	BULK 6	BULK 6
VIM BULK 1	BULK 1	BULK 7	BULK 7	BULK 7
VIM BULK 1	BULK 1	BULK 8	BULK 8	BULK 8
VIM BULK 1	BULK 1	BULK 9	BULK 9	BULK 9
VIM BULK 1	BULK 1	BULK 10	BULK 10	BULK 10
VIM BULK 1	BULK 1	BULK 11	BULK 11	BULK 11
VIM BULK 1	BULK 1	BULK 12	BULK 12	BULK 12
VIM BULK 1	BULK 1	BULK 13	BULK 13	BULK 13
VIM BULK 1	BULK 1	BULK 14	BULK 14	BULK 14
VIM BULK 1	BULK 1	BULK 15	BULK 15	BULK 15
VIM BULK 1	BULK 1	BULK 16	BULK 16	BULK 16
VIM BULK 1	BULK 1	BULK 17	BULK 17	BULK 17
VIM BULK 1	BULK 1	BULK 18	BULK 18	BULK 18
VIM BULK 1	BULK 1	BULK 19	BULK 19	BULK 19
VIM BULK 1	BULK 1	BULK 20	BULK 20	BULK 20
VIM BULK 1	BULK 1	BULK 21	BULK 21	BULK 21
VIM BULK 1	BULK 1	BULK 22	BULK 22	BULK 22
VIM BULK 1	BULK 1	BULK 23	BULK 23	BULK 23
VIM BULK 1	BULK 1	BULK 24	BULK 24	BULK 24
VIM BULK 1	BULK 1	BULK 25	BULK 25	BULK 25
VIM BULK 1	BULK 1	BULK 26	BULK 26	BULK 26
VIM BULK 1	BULK 1	BULK 27	BULK 27	BULK 27

WIRE CONNECTIONS IN MD-II "C"				
WIRE CODE	FROM	TO	TO	TO
H1C1	H1C1	H1C1	H1C1	H1C1
H2C1	H2C1	H2C1	H2C1	H2C1
H3C1	H3C1	H3C1	H3C1	H3C1
X1C1	X1C1	X1C1	X1C1	X1C1
X2C1	X2C1	X2C1	X2C1	X2C1
X3C1	X3C1	X3C1	X3C1	X3C1
H1C2	H1C2	H1C2	H1C2	H1C2
H2C2	H2C2	H2C2	H2C2	H2C2
H3C2	H3C2	H3C2	H3C2	H3C2
X1C2	X1C2	X1C2	X1C2	X1C2
X2C2	X2C2	X2C2	X2C2	X2C2
X3C2	X3C2	X3C2	X3C2	X3C2
X0C1	X0C1	X0C1	X0C1	X0C1
X0C2	X0C2	X0C2	X0C2	X0C2

WIRE CONNECTIONS FROM CUSTOMER POWER SUPPLY TO CONTROL CABINET				
WIRE CODE	FROM	TO	TO	TO
L1	L1	L1	L1	L1
L2	L2	L2	L2	L2
L3	L3	L3	L3	L3
GRND	GRND	GRND	GRND	GRND

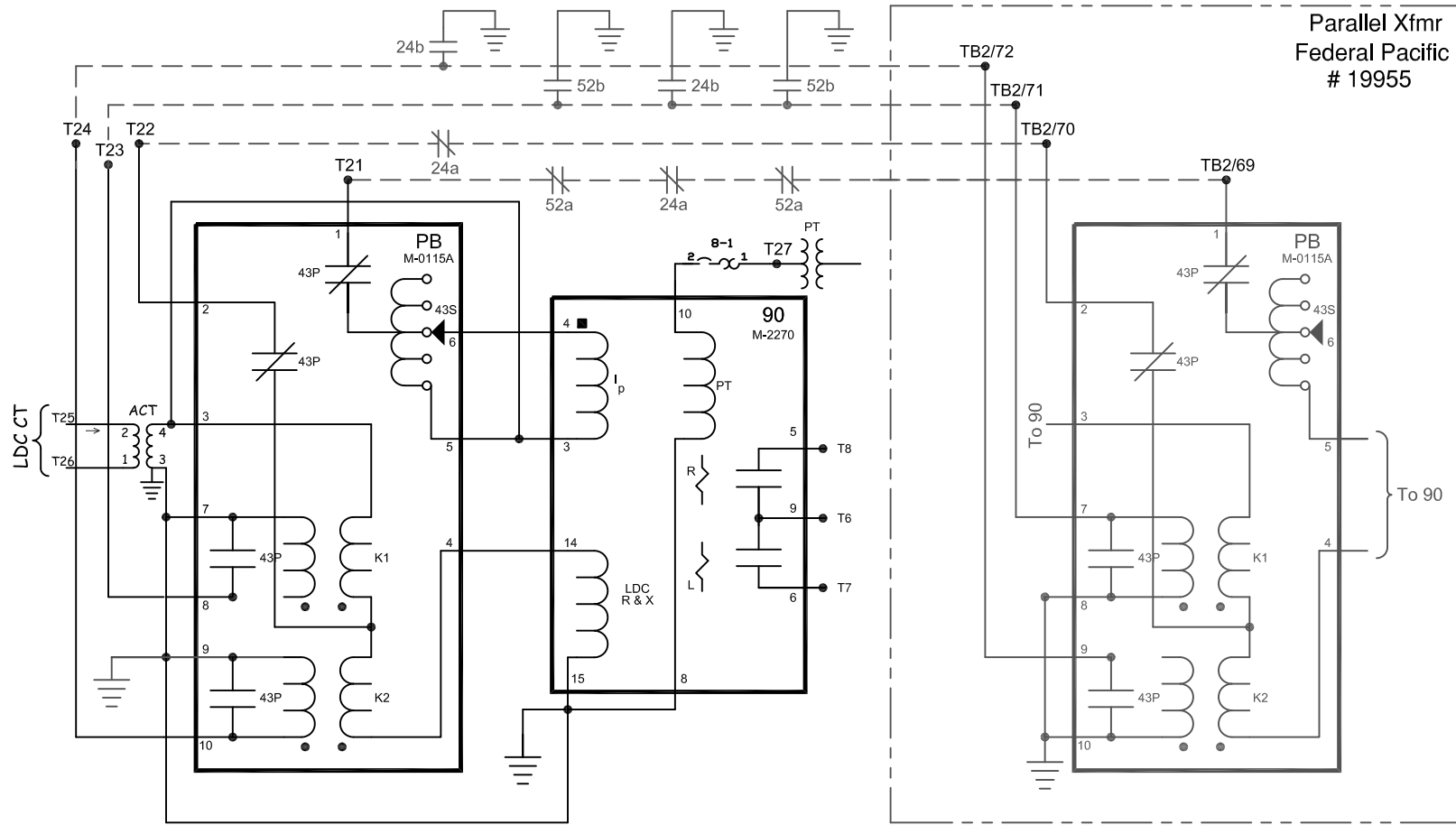
WIRE CONNECTIONS IN T.C. COMPARTMENT "V"				
WIRE CODE	FROM	TO	TO	TO
H1C1	H1C1	H1C1	H1C1	H1C1
H2C1	H2C1	H2C1	H2C1	H2C1
H3C1	H3C1	H3C1	H3C1	H3C1
X1C1	X1C1	X1C1	X1C1	X1C1
X2C1	X2C1	X2C1	X2C1	X2C1
X3C1	X3C1	X3C1	X3C1	X3C1

WIRE CONNECTIONS IN EIGHT PIN CABLE (PL3) TO SWING PANEL "B"				
WIRE CODE	FROM	TO	TO	TO
PL 1	PL 1	PL 1	PL 1	PL 1
PL 2	PL 2	PL 2	PL 2	PL 2
PL 3	PL 3	PL 3	PL 3	PL 3
PL 4	PL 4	PL 4	PL 4	PL 4



Right Side Panel

Parallel Xfmr  
Federal Pacific  
# 19955



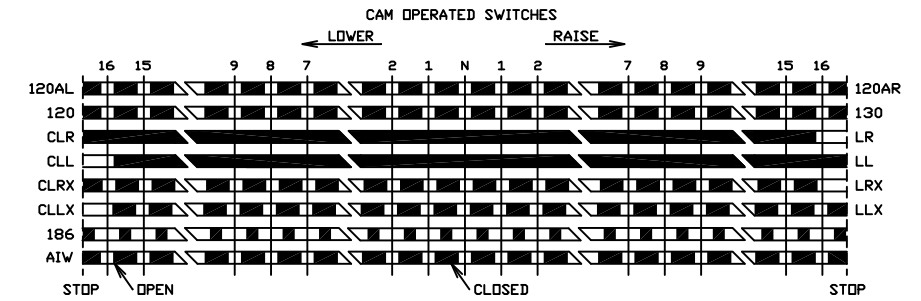
NOTES:

- (K) AUXILIARY CONTACTS.
- (L) SHIELDED CABLE.
- (S) WARNING:  
DO NOT HIPOT VLV.  
DISCONNECT M1, M2, M4, M5 & M7  
BEFORE HIPOT TEST.

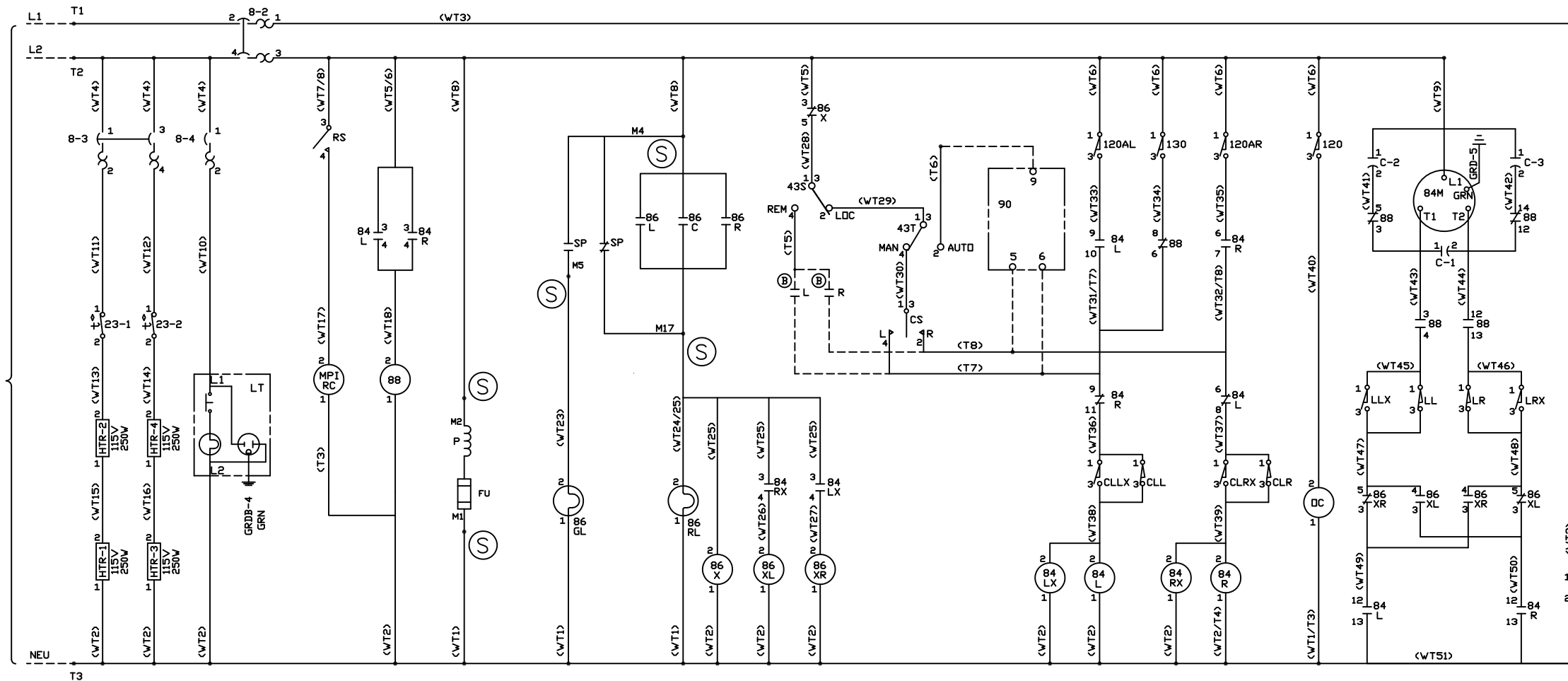
\*X PLACED AT THE DEVICE TERMINAL  
INDICATES AN UNUSED TERMINAL.

ALL APPARATUS IS SHOWN IN DE-ENERGIZED POSITION.  
ALL LOAD TAP CHANGER CONTROL EQUIPMENT IS SHOWN FOR LTC ON POSITION N.

- |      |   |         |                                    |
|------|---|---------|------------------------------------|
| 8-2  | CIRCUIT BREAKER (SET AT 5.5A)           | AIW     | LIGHT PIPE VERIFICATION SWITCH     |
| 8-3  | CIRCUIT BREAKER (2.0A)                  | C-1,2,3 | CAPACITOR                          |
| 8-4  | CIRCUIT BREAKER (15.0A)                 | CS      | RAISE/LOWER SWITCH                 |
| 23-1 | THERMOSTAT (HEATERS 1 & 2)              | L       | LOWER CONTACT                      |
| 23-2 | THERMOSTAT (HEATERS 3 & 4)              | R       | RAISE CONTACT                      |
| 43S  | REMOTE-LOCAL SWITCH                     | FU      | FUSE 3AG .25A (.25" x 1.25)        |
| 43T  | AUTO-MANUAL SWITCH                      | GRDB    | GROUND BAR                         |
| 63P  | MECHANICAL RELIEF DEVICE (WHEN ORDERED) | HTR-1,2 | HEATER STAGE ONE (55F)             |
| 71Q  | LIQUID LEVEL GAUGE                      | HTR-3,4 | HEATER STAGE TWO (25F)             |
| 84H  | HANDCRANK INTERLOCK SWITCH              | JT      | JUNCTION PLATE TERMINAL            |
| 84L  | MOTOR CONTROL LOWER RELAY               | LE      | LIGHT EMITTER                      |
| 84LX | AUXILIARY RELAY (LOWER)                 | LP      | LIGHT PIPE                         |
| 84M  | MOTOR                                   | LR      | LIGHT RECEIVER                     |
| 84R  | MOTOR CONTROL RAISE RELAY               | LT      | LIGHT/CONVENIENCE OUTLET COMB.     |
| 84RX | AUXILIARY RELAY (RAISE)                 | LTI     | MECHANICAL POSITION INDICATOR      |
| 86   | SEQUENCE MONITOR                        | MPI     | ELEC. RESET COIL (MAX.-MIN. HANDS) |
|      | LEFT PHASE CONTACT                      | RC      | OPERATION COUNTER                  |
|      | CENTER PHASE CONTACT                    | DC      | MONITORING SYSTEM POWER SUPPLY     |
|      | RIGHT PHASE CONTACT                     | PLC     | EIGHT-PIN PLUG CONNECTION          |
|      | SUPERVISORY POWER CONTROL LIGHT (GREEN) | PL      | EIGHT-PIN PLUG                     |
|      | LOCKOUT LIGHT (RED)                     | RS      | RESET SWITCH                       |
|      | LOCKOUT AUXILIARY RELAY                 | RSM     | MONITORING RESET SWITCH(RED)       |
|      | LOCKOUT RUN-BACK RELAY (LOWER)          | SP      | SUPERVISION POWER                  |
|      | LOCKOUT RUN-BACK RELAY (RAISE)          | TSM     | MONITORING TEST SWITCH(GREEN)      |
|      | BRAKE RELAY                             | VIM     | VACUUM INTERRUPTER MONITOR         |
|      | MONITORING CONTROL SWITCH               | VSV     | VACUUM SWITCH                      |



CUSTOMER'S 120/208-240 V. 60 HZ 1 PH. SUPPLY - 30 KVA REQUIRED



\*CS\*

CONT'S	POSITION		
WHT	B 1-2		X
	A 3-4	X	

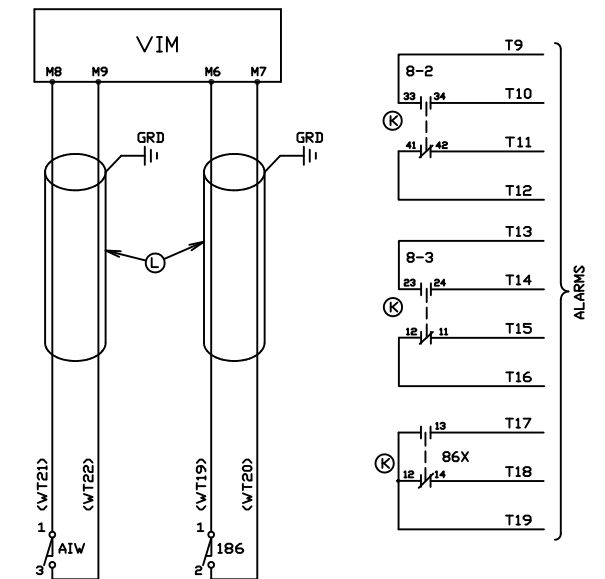
43S

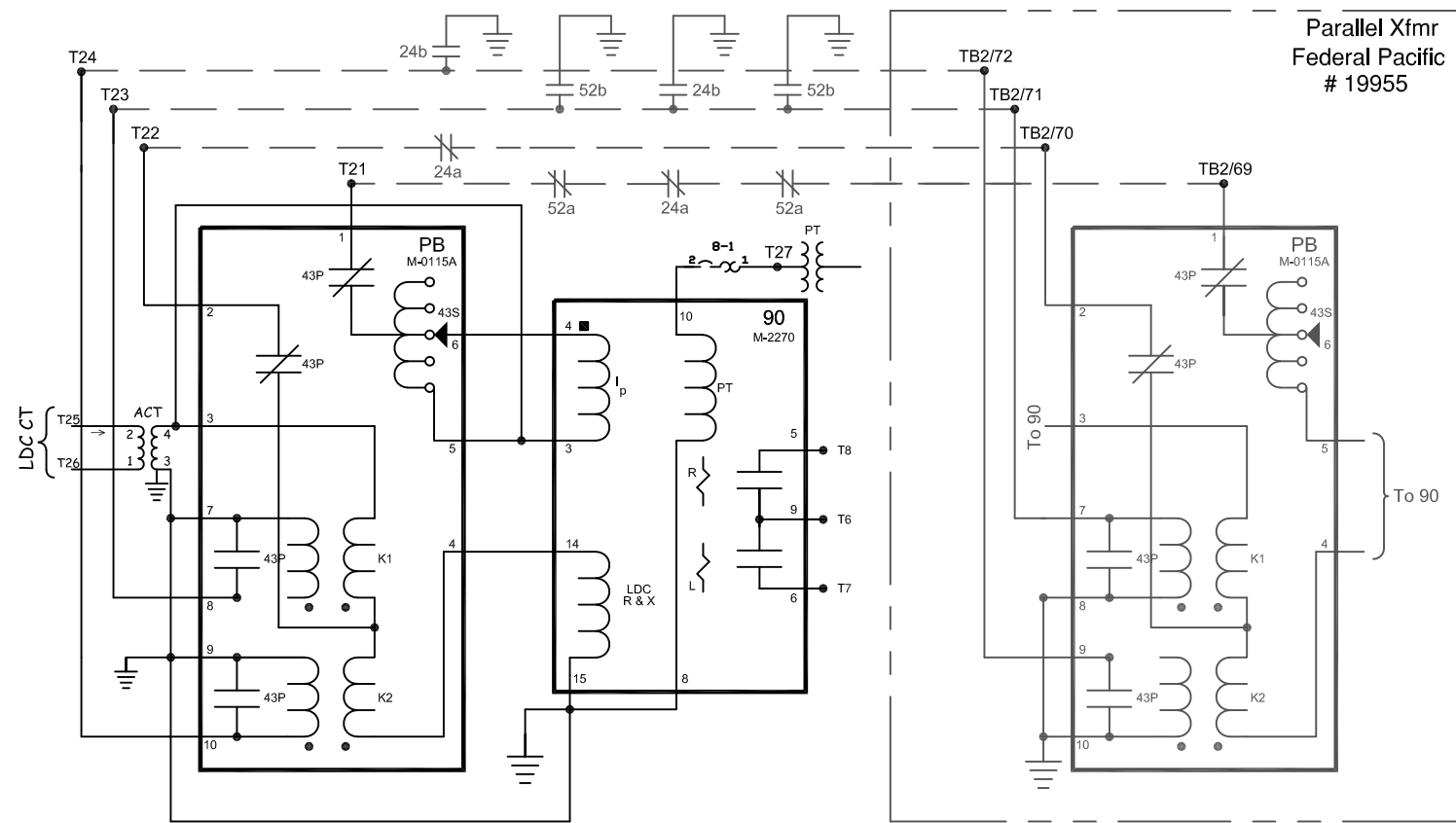
CONT'S	POSITION		
WHT	B 1-2	X	
	A 3-4	X	

X=CONTACT CLOSED

43T

CONT'S	POSITION		
WHT	B 1-2	X	
	A 3-4	X	

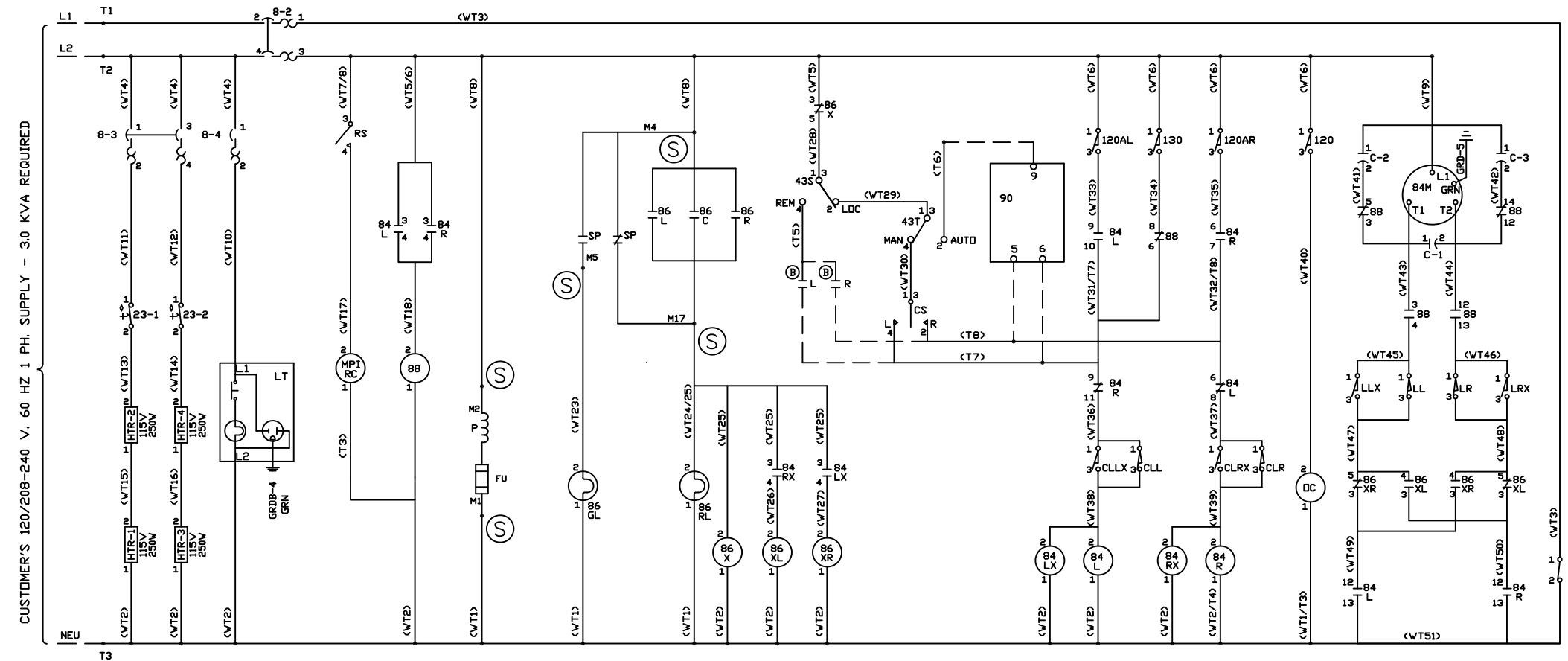
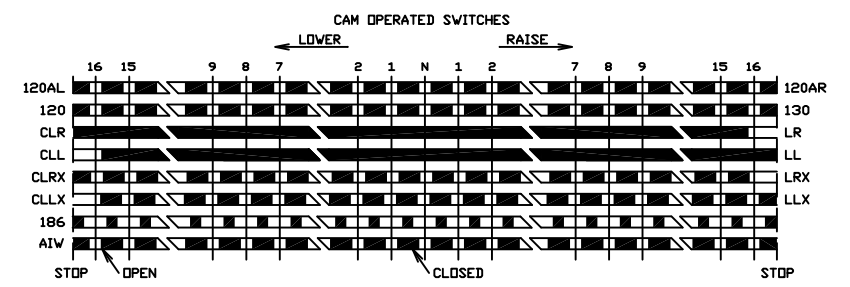




**NOTES:**

- ⊗ AUXILIARY CONTACTS.
  - Ⓛ SHIELDED CABLE.
  - Ⓢ WARNING:  
DO NOT HIPOT VIV.  
DISCONNECT M1, M2, M4, M5 & M17  
BEFORE HIPOT TEST.
- \*X\* PLACED AT THE DEVICE TERMINAL  
INDICATES AN UNUSED TERMINAL.

- 8-2 CIRCUIT BREAKER (SET AT 5.5A)
  - 8-3 CIRCUIT BREAKER (2.0A)
  - 8-4 CIRCUIT BREAKER (15.0A)
  - 23-1 THERMOSTAT (HEATERS 1 & 2)
  - 23-2 THERMOSTAT (HEATERS 3 & 4)
  - 43S REMOTE-LOCAL SWITCH
  - 43T AUTO-MANUAL SWITCH
  - 63P MECHANICAL RELIEF DEVICE (WHEN ORDERED)
  - 71Q LIQUID LEVEL GAUGE
  - 84H HANDCRANK INTERLOCK SWITCH
  - 84L MOTOR CONTROL LOWER RELAY
  - 84LX AUXILIARY RELAY (LOWER)
  - 84M MOTOR
  - 84R MOTOR CONTROL RAISE RELAY
  - 84RX AUXILIARY RELAY (RAISE)
  - 84S SEQUENCE MONITOR
  - 86L LEFT PHASE CONTACT
  - 86R CENTER PHASE CONTACT
  - 86X RIGHT PHASE CONTACT
  - 86XL SUPERVISORY POWER CONTROL LIGHT (GREEN)
  - 86XR LOCKOUT LIGHT (RED)
  - 88 LOCKOUT AUXILIARY RELAY
  - 186 LOCKOUT RUN-BACK RELAY (LOWER)
  - 186X LOCKOUT RUN-BACK RELAY (RAISE)
  - 186Y BRAKE RELAY
  - 186Z MONITORING CONTROL SWITCH
- AIW LIGHT PIPE VERIFICATION SWITCH
  - C-1,2,3 CAPACITOR
  - CS RAISE/LOWER SWITCH
  - L LOWER CONTACT
  - R RAISE CONTACT
  - FU FUSE 3AG 25A (.25" x 1.25")
  - GRDB GROUND BAR
  - HTR-1,2 HEATER STAGE ONE (SSF)
  - HTR-3,4 HEATER STAGE TWO (SSF)
  - JT JUNCTION PLATE TERMINAL
  - LE LIGHT EMITTER
  - LP LIGHT PIPE
  - LR LIGHT RECEIVER
  - LT LIGHT/CONVENIENCE OUTLET COMB.
  - MPI MECHANICAL POSITION INDICATOR
  - RC ELEC. RESET COIL (MAX.-MIN. HANDS)
  - DC OPERATION COUNTER
  - P MONITORING SYSTEM POWER SUPPLY
  - PLC EIGHT-PIN PLUG CONNECTION
  - PL EIGHT-PIN PLUG
  - RS RESET SWITCH
  - RSM MONITORING RESET SWITCH (RED)
  - SP SUPERVISOR POWER
  - TSM MONITORING TEST SWITCH (GREEN)
  - VIM VACUUM INTERRUPTER MONITOR
  - VSW VACUUM SWITCH



\*CS\*

CONT'S	POSITION
WHT B 1-2	X
A 3-4	X

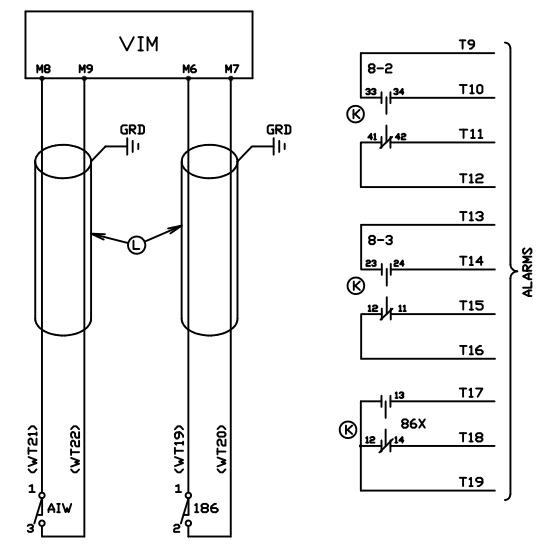
43S

CONT'S	POSITION
WHT B 1-2	X
A 3-4	X

X=CONTACT CLOSED

43T

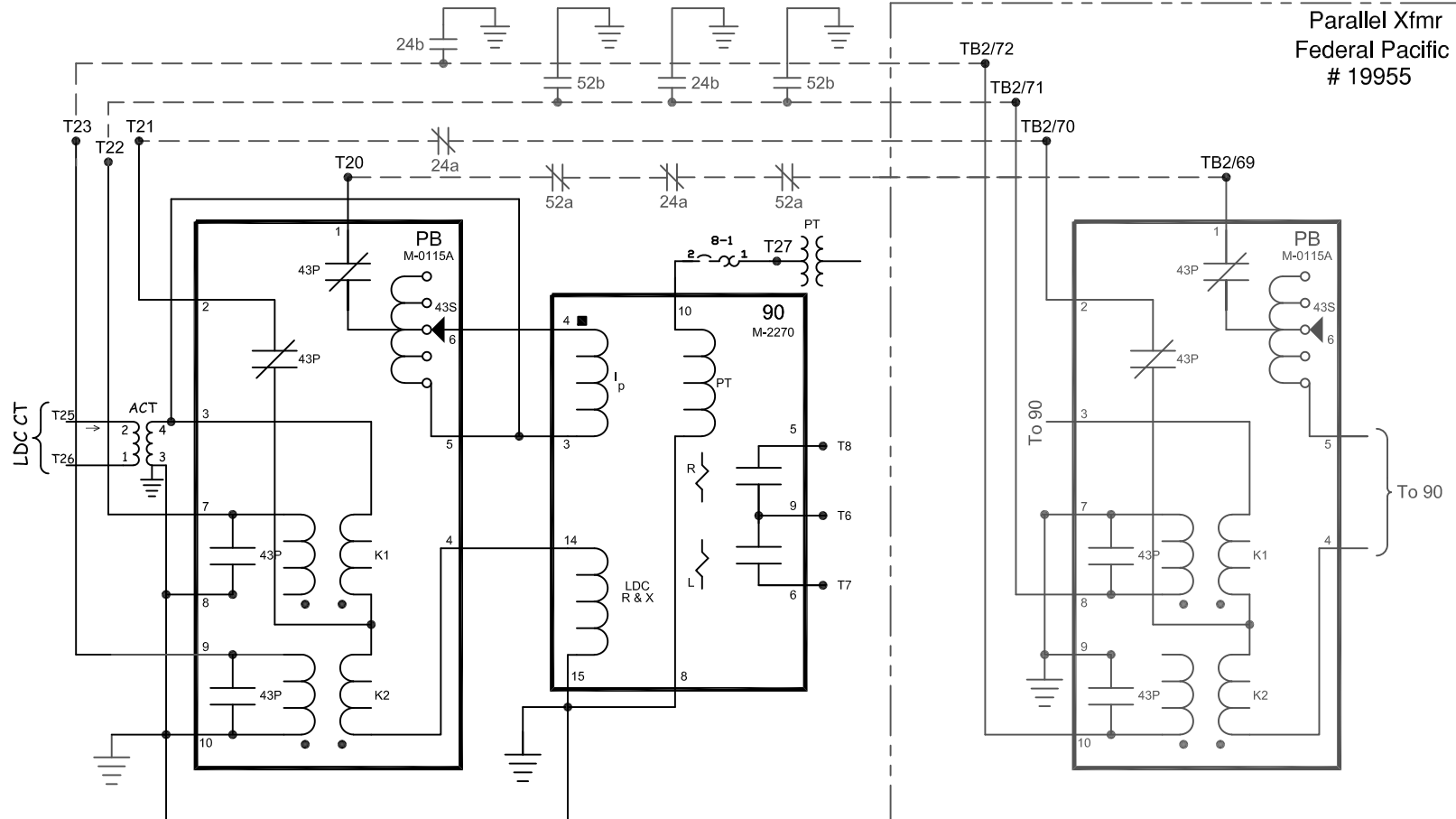
CONT'S	POSITION
WHT B 1-2	X
A 3-4	X



CUSTOMER'S 120/208-240 V. 60 HZ 1 PH. SUPPLY - 3.0 KVA REQUIRED

DATE	REVISIONS / NOTES	DATE	REVISIONS / NOTES

Parallel Xfmr  
Federal Pacific  
# 19955

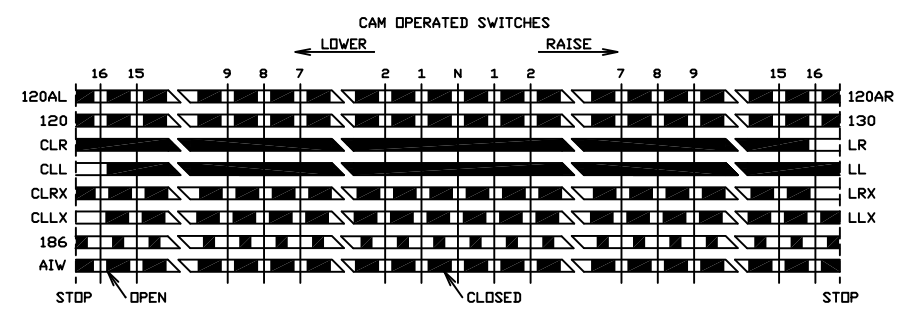


NOTES:

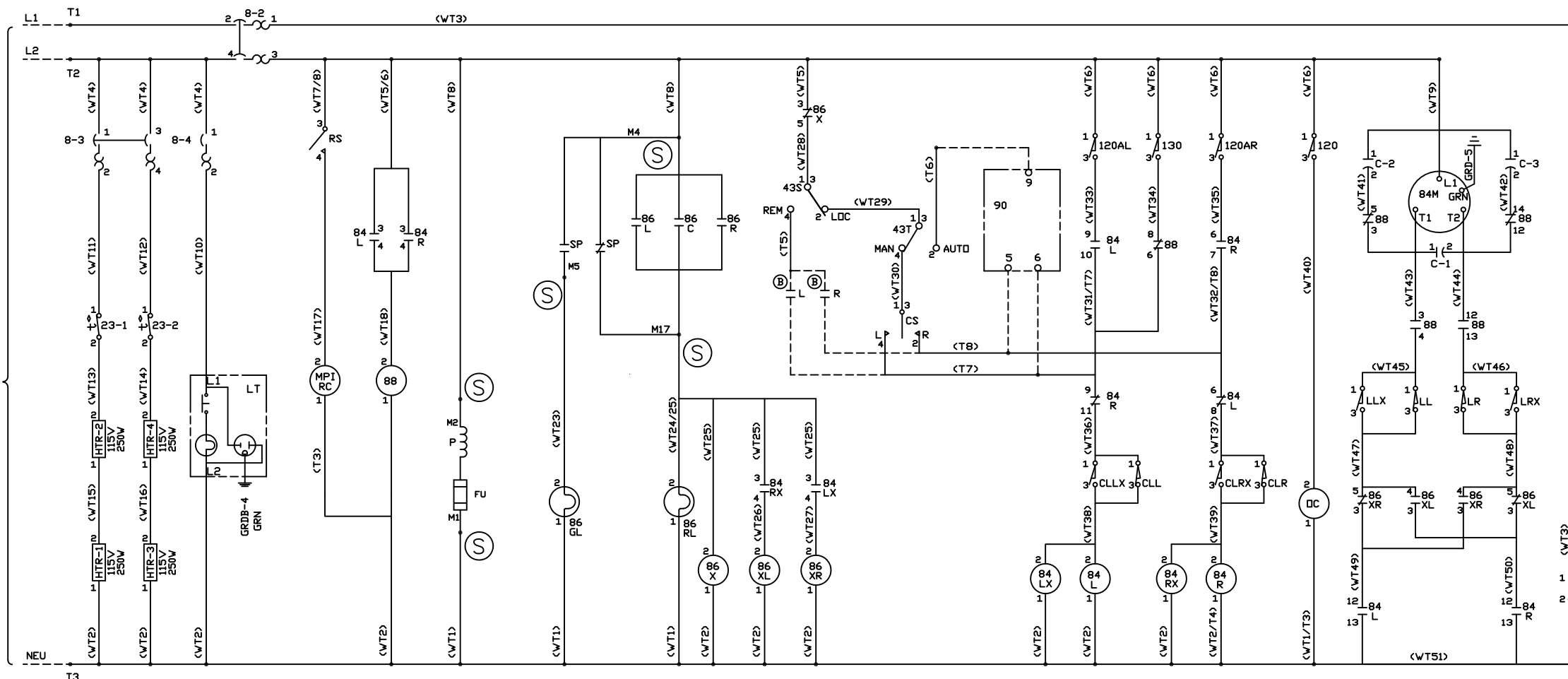
- (K) AUXILIARY CONTACTS.
  - (L) SHIELDED CABLE.
  - (S) WARNING:  
DO NOT HIPOT VLV.  
DISCONNECT M1, M2, M4, M5 & M17  
BEFORE HIPOT TEST.
- \*X\* PLACED AT THE DEVICE TERMINAL  
INDICATES AN UNUSED TERMINAL.

ALL APPARATUS IS SHOWN IN DE-ENERGIZED POSITION.  
ALL LOAD TAP CHANGER CONTROL EQUIPMENT IS SHOWN FOR LTC ON POSITION N.

- |      |   |         |                                   |
|------|---|---------|-----------------------------------|
| 8-2  | CIRCUIT BREAKER (SET AT 5.5A)           | AIW     | LIGHT PIPE VERIFICATION SWITCH    |
| 8-3  | CIRCUIT BREAKER (2.0A)                  | C-1,2,3 | CAPACITOR                         |
| 8-4  | CIRCUIT BREAKER (15.0A)                 | CS      | RAISE/LOWER SWITCH                |
| 23-1 | THERMOSTAT (HEATERS 1 & 2)              | L       | LOWER CONTACT                     |
| 23-2 | THERMOSTAT (HEATERS 3 & 4)              | R       | RAISE CONTACT                     |
| 43S  | REMOTE-LOCAL SWITCH                     | FU      | FUSE 3AG .25A (.25" x 1.25)       |
| 43T  | AUTO-MANUAL SWITCH                      | GRDB    | GROUND BAR                        |
| 53P  | MECHANICAL RELIEF DEVICE (WHEN ORDERED) | HTR-1,2 | HEATER STAGE ONE (55F)            |
| 71Q  | LIQUID LEVEL GAUGE                      | HTR-3,4 | HEATER STAGE TWO (25F)            |
| 84H  | HANDCRANK INTERLOCK SWITCH              | JT      | JUNCTION PLATE TERMINAL           |
| 84L  | MOTOR CONTROL LOWER RELAY               | LE      | LIGHT EMITTER                     |
| 84LX | AUXILIARY RELAY (LOWER)                 | LP      | LIGHT PIPE                        |
| 84M  | MOTOR                                   | LR      | LIGHT RECEIVER                    |
| 84R  | MOTOR CONTROL RAISE RELAY               | LT      | LIGHT/CONVENIENCE OUTLET COMB.    |
| 84RX | AUXILIARY RELAY (RAISE)                 | MPI     | MECHANICAL POSITION INDICATOR     |
| 86   | SEQUENCE MONITOR                        | RC      | ELEC. RESET COIL (MAX-MIN. HANDS) |
|      | LEFT PHASE CONTACT                      | DC      | OPERATION COUNTER                 |
|      | CENTER PHASE CONTACT                    | P       | MONITORING SYSTEM POWER SUPPLY    |
|      | RIGHT PHASE CONTACT                     | PLC     | EIGHT-PIN PLUG CONNECTION         |
|      | SUPERVISORY POWER CONTROL LIGHT (GREEN) | PL      | EIGHT-PIN PLUG                    |
|      | LOCKOUT LIGHT (RED)                     | RS      | RESET SWITCH                      |
|      | LOCKOUT AUXILIARY RELAY                 | RSM     | MONITORING RESET SWITCH(RED)      |
|      | LOCKOUT RUN-BACK RELAY (LOWER)          | SP      | SUPERVISION POWER                 |
|      | LOCKOUT RUN-BACK RELAY (RAISE)          | TSM     | MONITORING TEST SWITCH(GREEN)     |
|      | BRAKE RELAY                             | VIM     | VACUUM INTERRUPTER MONITOR        |
|      | MONITORING CONTROL SWITCH               | VSV     | VACUUM SWITCH                     |



CUSTOMER'S 120/208-240 V. 60 HZ 1 PH. SUPPLY - 30 KVA REQUIRED



\*CS\*

CONT'S	POSITION		
WHT	B 1-2		X
	A 3-4	X	

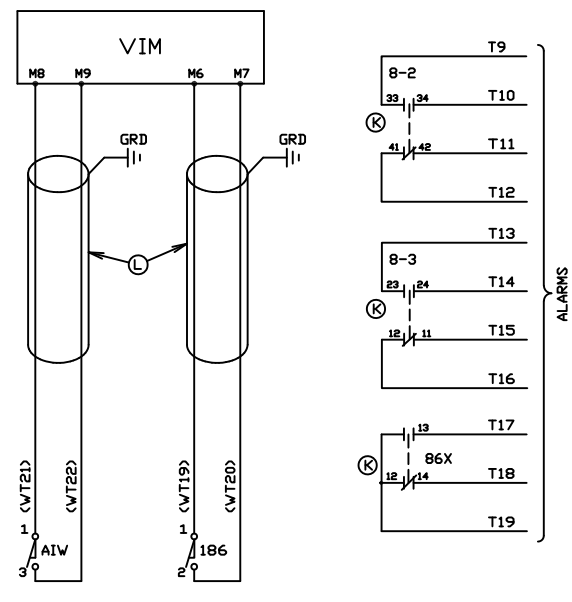
43S

CONT'S	POSITION		
WHT	B 1-2	X	
	A 3-4	X	

X=CONTACT CLOSED

43T

CONT'S	POSITION		
WHT	B 1-2	X	
	A 3-4	X	

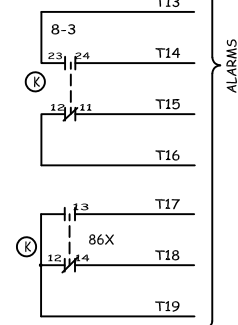
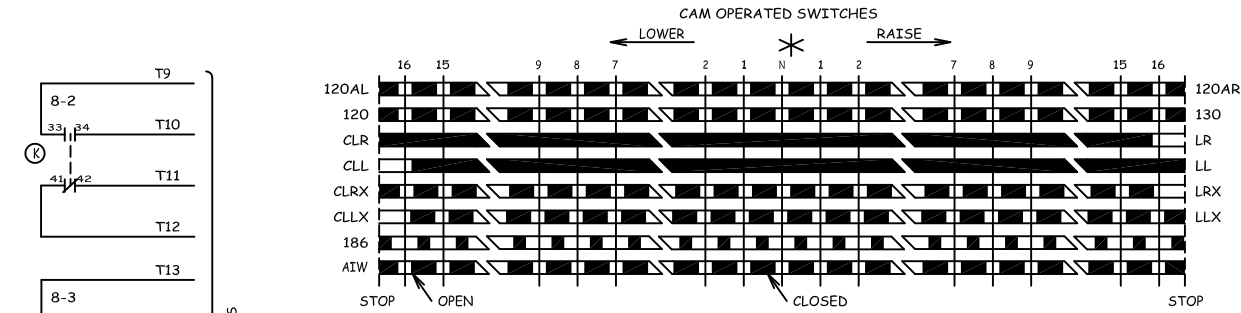


DATE	REVISIONS/NOTES

DATE	REVISIONS/NOTES



ALL APPARATUS IS SHOWN IN DE-ENERGIZED POSITION. ALL LOAD TAP CHANGER CONTROL EQUIPMENT IS SHOWN FOR LTC ON POSITION N.



"CS"

CONT'S	POSITION
WHT B 1-2	X
A 3-4	X

43S

CONT'S	POSITION
WHT B 1-2	X
A 3-4	X

43T

CONT'S	POSITION
WHT B 1-2	X
A 3-4	X

X=CONTACT CLOSED

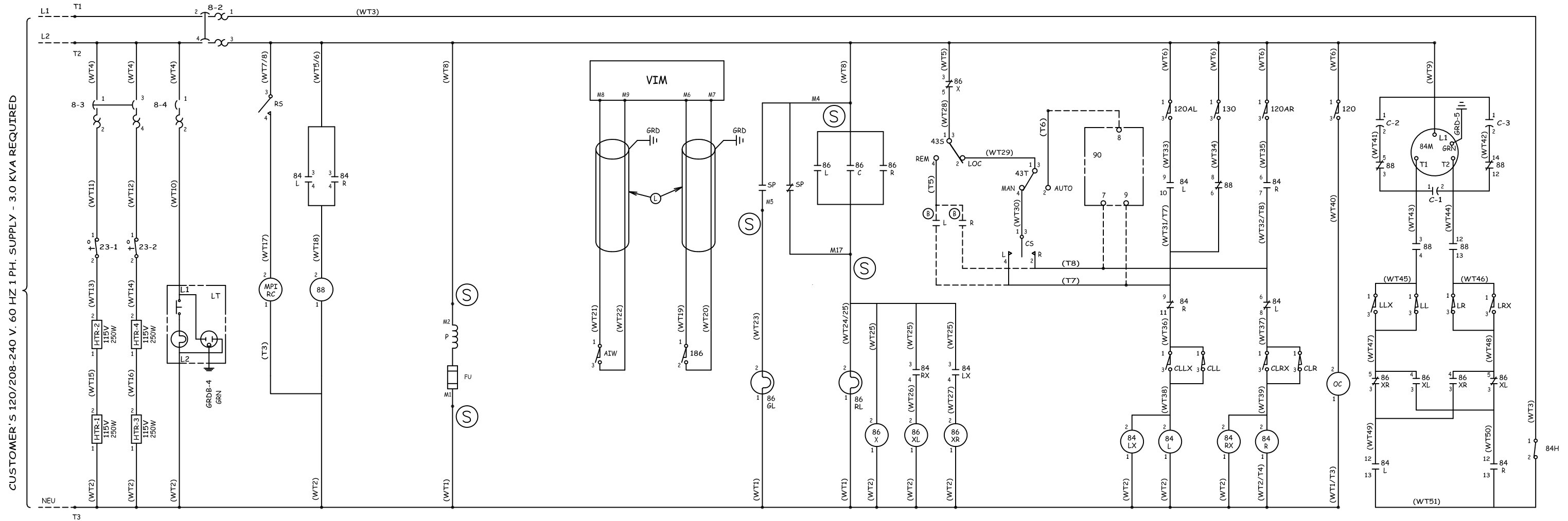


- 8-2 CIRCUIT BREAKER (SET AT 5.5A)
- 8-3 CIRCUIT BREAKER (2.0A)
- 8-4 CIRCUIT BREAKER (15.0A)
- 23-1 THERMOSTAT (HEATERS 1 & 2)
- 23-2 THERMOSTAT (HEATERS 3 & 4)
- 43S REMOTE-LOCAL SWITCH
- 43T AUTO-MANUAL SWITCH
- 63P MECHANICAL RELIEF DEVICE (WHEN ORDERED)
- 71Q LIQUID LEVEL GAUGE
- 84L HANDCRANK INTERLOCK SWITCH
- 84L MOTOR CONTROL LOWER RELAY
- 84LX AUXILIARY RELAY (LOWER)
- 84R MOTOR
- 84M MOTOR CONTROL RAISE RELAY
- 84R AUXILIARY RELAY (RAISE)
- 84RX SEQUENCE MONITOR
- 86 LEFT PHASE CONTACT
- 86L CENTER PHASE CONTACT
- 86RL RIGHT PHASE CONTACT
- 86X SUPERVISORY POWER CONTROL LIGHT (GREEN)
- 86XL LOCKOUT LIGHT (RED)
- 86XR LOCKOUT AUXILIARY RELAY (LOWER)
- 88 LOCKOUT RUN-BACK RELAY (RAISE)
- 186 BRAKE RELAY
- MONITORING CONTROL SWITCH

- AIW LIGHT PIPE VERIFICATION SWITCH
- C-1,2,3 CAPACITOR
- CS RAISE/LOWER SWITCH
- L LOWER CONTACT
- R RAISE CONTACT
- FU FUSE 3AG .25A (.25" x 1.25)
- GRDB GROUND BAR
- HTR-1,2 HEATER STAGE ONE (55F)
- HTR-3,4 HEATER STAGE TWO (25F)
- JT JUNCTION PLATE TERMINAL
- LE LIGHT EMITTER
- LP LIGHT PIPE
- LR LIGHT RECEIVER
- LT LIGHT/CONVENIENCE OUTLET COMBINATION
- MPI MECHANICAL POSITION INDICATOR
- RC ELEC. RESET COIL (MAX.-MIN. HANDS)
- OC OPERATION COUNTER
- P MONITORING SYSTEM POWER SUPPLY
- PLC EIGHT-PIN PLUG CONNECTION
- PL EIGHT-PIN PLUG
- RS RESET SWITCH
- RSM MONITORING RESET SWITCH (RED)
- SP SUPERVISION POWER
- TSM MONITORING TEST SWITCH (GREEN)
- VIM VACUUM INTERRUPTER MONITOR
- VSW VACUUM SWITCH

NOTES:

- (K) AUXILIARY CONTACTS.
  - (L) SHIELDED CABLE.
  - (S) WARNING: DO NOT HIPOT VIW. DISCONNECT M1,M2,M4,M5 & M17 BEFORE HIPOT TEST.
- "X" PLACED AT THE DEVICE TERMINAL INDICATES AN UNUSED TERMINAL.



CUSTOMER'S 120/208-240 V. 60 HZ 1 PH. SUPPLY - 3.0 KVA REQUIRED



**Solomon Corporation**  
Solomon, KS (800-234-2867)



DATE	REVISIONS/NOTES	DATE	REVISIONS/NOTES
	Federal Pacific Xfmr w/ Reinhausen LTC		

DRAWING TYPE: **Wiring Schematic**  
DESIGN, DRAWN & WIRED BY: **Leon Jeardoe**

DRAWING DESCRIPTION: **LTC Control**  
DATE: **5/04/05**

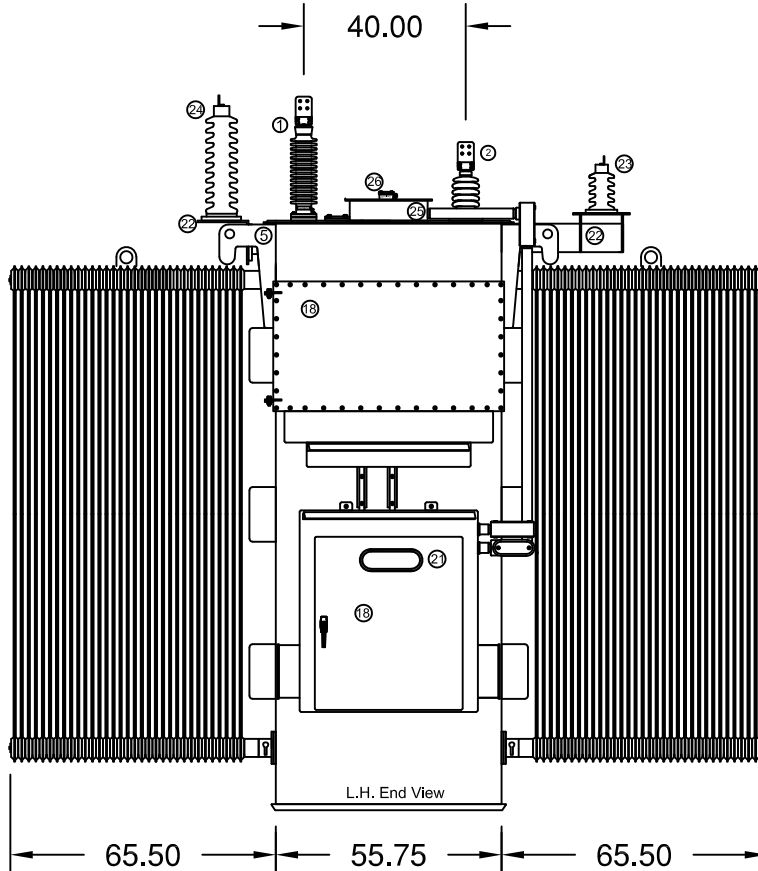
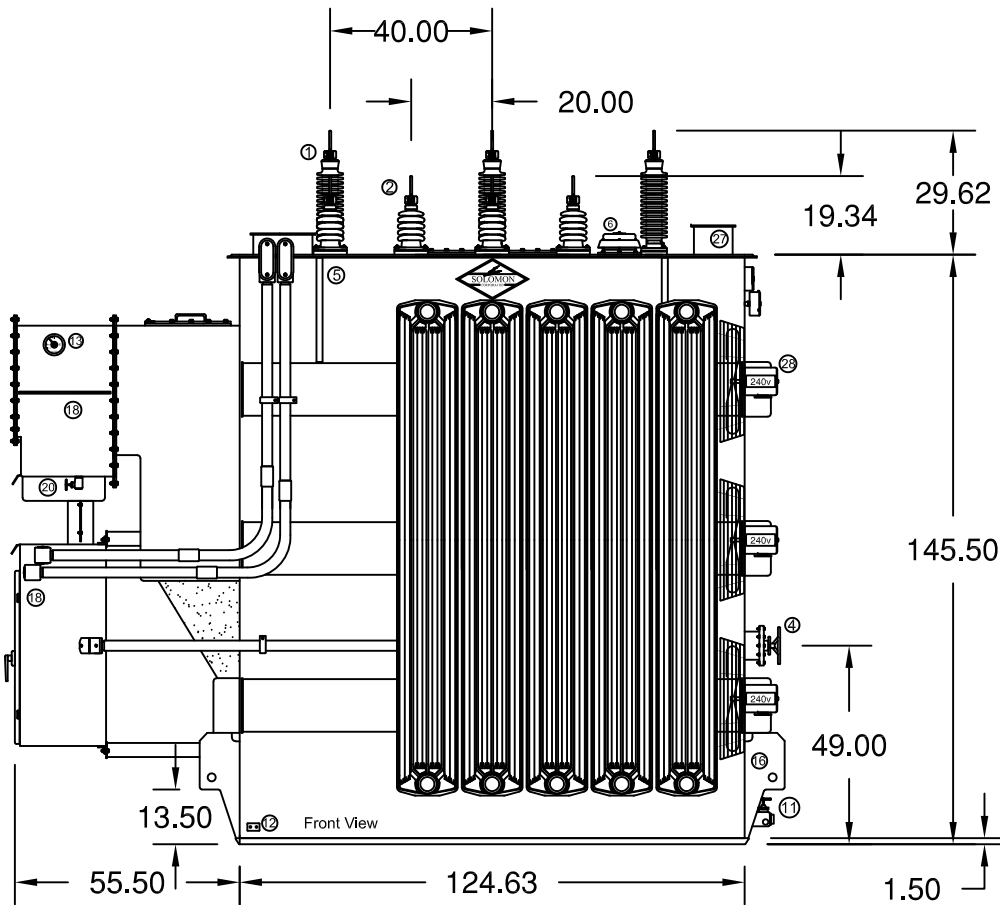
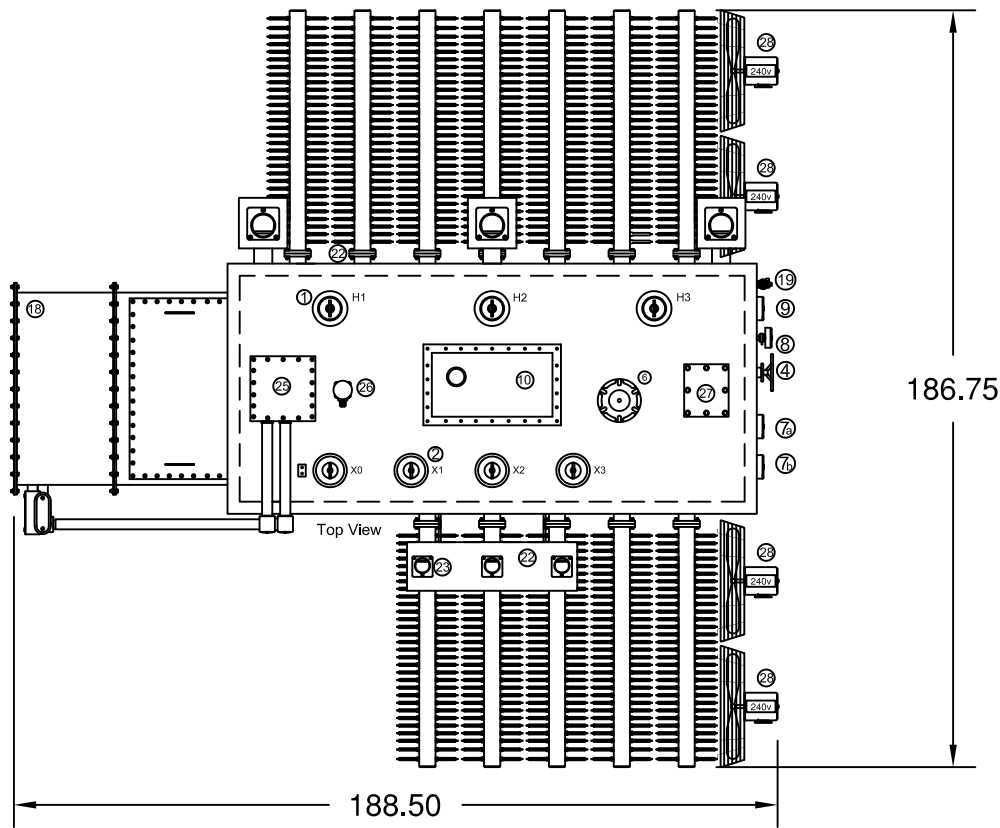
**Bridger Coal**  
15000 KVA # 19947

# THREE PHASE SUBSTATION TRANSFORMER

15000/20000 KVA AT 65° C RISE OA/FA  
 PRIMARY VOLTAGE: 34500 DELTA BIL: 200 KV  
 SECONDARY VOLTAGE: 12470Y/7200 BIL: 110 KV  
 PRIMARY TAPS: + - 5% FCAN & BN  
 SECONDARY TAPS: +-16 @ 5/8% Taps  
 HERTZ : 60 CYCLES

**WEIGHTS & GALS.**  
 MAIN OIL GAL : 4140  
 LTC OIL GAL : 150  
 C & C WT : 46180  
 TANK WT : 39000  
 OIL WT : 32175  
 TOTAL WT : **117355**

**NOTE:**  
 1. Arrestors and Arrestor brackets not shown on Front View.



1	35 KV HV LAPP Bushings 1.125"Stud w/4Hole Spade Solomon # 821
2	15 KV LV Bushings 1.125" Stud w/4Hole Spade Warco #41A05099-9
3	Cooling Radiators
4	HV TapChanger Handle (De-Energized Operation) R.H. End of Tank
5	Lifting Hooks
6	Explosion Relief Device Sol. # 849
7	Qualitrol (a) Oil Temp. #104-317-01 (b) Winding Temp #104-318-01
8	Main Tank Pressure/Vac Gauge w/Bleeder Solomon# 142
9	Main Tank Liquid Level Gauge Solomon# 1205
10	Bolt-On Inspection/Manhole Cover (34" x 20")
11	Drain Valve (Main Tank)
12	Grounding Pad
13	LTC Tank Liquid Level Gauge Solomon# 1205
14	Laser Etched Nameplate Anodized Aluminum R.H. End of Tank
15	LTC Liquid Temperature Gauge Solomon# 173
16	Jacking Pads
17	LTC Tank Pressure/Vac. Gauge (N/A - Unit is Free Breathing)
18	LTC Tank and Control Cabinet w/ Fan Controls
19	Top Fill Valve (Main Tank)
20	Drain Valve (LTC Tank)
21	LTC Position Indicator
22	HV & LV Arrestor Brackets
23	LV Arrestors 15 KV (12.7 KV MCOV) #217 013
24	HV Arrestors 27 KV (22 KV MCOV) #217 022
25	Terminal Block-CT Wiring Junction Box
26	Rapid Pressure Rise Relay Qualitrol # 910-010-03
27	Core Ground Bushing Enclosure
28	Krenz Cooling Fans (8) #F26-A8674 .125HP / 850 RPM / 230v
29	

**SOLOMON CORPORATION**  
 SOLOMON, KANSAS  
 (785) 655-2191

TRANSFORMER VOLTAGES  
 PRIMARY  
 34500 DELTA  
 SECONDARY  
 12470Y/7200

THREE PHASE 60 HERTZ  
 POWER CLASS LTC TRANSFORMER  
 KV-BIL FULL WAVE IMPULSE LEVEL  
 H1 H2 H3=200 X0 X1 X2 X3=110  
 IMPEDANCE VOLTS 7.7%  
 AT 85° C - 15000KVA 34500 - 12470

FULL LOAD CONTINUOUSLY  
 15000/20000 KVA O.A.F.A.  
 65° C RISE

SERIAL # L44744  
 JOB # 19955

* HV WINDING CONNECTIONS				LV CONNECTIONS			
WINDING	VOLTS	AMP VIEW	CONNECTIONS	VOLTS	AMPS	CONNECTIONS	REVERSEING SWITCH ON
HIGH	36225	238.07	1 / A	A TO B	11000	240.00	
	35933	244.30	2 / B	B TO C	11000	240.00	
VOLTAGE	34500	251.92	3 / C	C TO D	11000	240.00	
DELTA	33638	257.45	4 / D	D TO E	11000	240.00	
	32775	264.23	5 / E	E TO F	11000	240.00	

APPROXIMATE WEIGHTS EXPRESSED IN U.S. POUNDS  
 TOTAL - 117355 lbs.  
 UNTANKING (CORRECTION) - 46180 lbs.  
 TANK AND FITTINGS - 39000 lbs.  
 LTC TANK - 150 MAIN TANK - 4140 OIL - 32175 lbs.

THE 20° C LIQUID LEVEL IS 14.3 INCHES BELOW TOP OF HIGHEST MANHOLE FLANGE.  
 LIQUID LEVEL CHANGES 1.1 INCHES FOR EACH 10° C CHANGE IN AVERAGE LIQUID TEMPERATURE.  
 THE MAXIMUM OPERATING PRESSURES OF LIQUID PRESERVATION SYSTEM IS 0.154 PSIG POS. TO 0.2 PSIG NEG.  
 FILLED WITH NON-PCB OIL AT TIME OF REMANUFACTURE. TANK IS SUITABLE FOR 147 LBS VACUUM FILLING.  
 \* THE TRANSFORMER MUST NOT BE ENERGIZED FROM ANY VOLTAGE SOURCE WHEN HV TAP CHANGER IS OPERATED.  
 LTC-CT IS 1400S AMP. FOR USE WITH LOAD TAP CHANGER. ■ - POLARITY MARK

Nameplate Actual Size - 12" x 17.0"

DATE	REVISIONS/NOTES	DATE	REVISIONS/NOTES



**TRANSFORMER VOLTAGES**

**PRIMARY**

34500 DELTA

**SECONDARY**

12470Y/7200

**THREE PHASE 60 HERTZ  
 POWER CLASS LTC TRANSFORMER**

KV-BIL FULL WAVE IMPULSE LEVEL  
 H1,H2,H3= 200 XO,X1,X2,X3=110

IMPEDANCE VOLTS 7.78 %  
 AT 85°C - 15000KVA 34500 - 7200

FULL LOAD CONTINUOUSLY  
 15000/20000 KVA OA/FA  
 65°C RISE

SERIAL # 44744

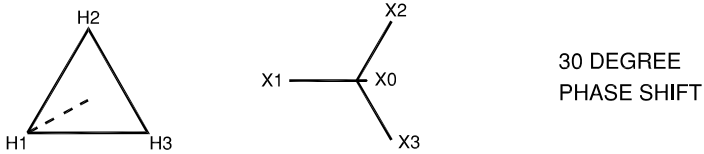
JOB # 19955

**\* HV WINDING CONNECTIONS**

WINDING	VOLTS	AMP 15000 KVA	DIAL POSITION	CONNECTS
HIGH VOLTAGE DELTA	36225	239.07	1 / A	A TO B
	35363	244.90	2 / B	B TO C
	34500	251.02	3 / C	D TO C
	33638	257.45	4 / D	D TO E
	32775	264.23	5 / E	E TO F

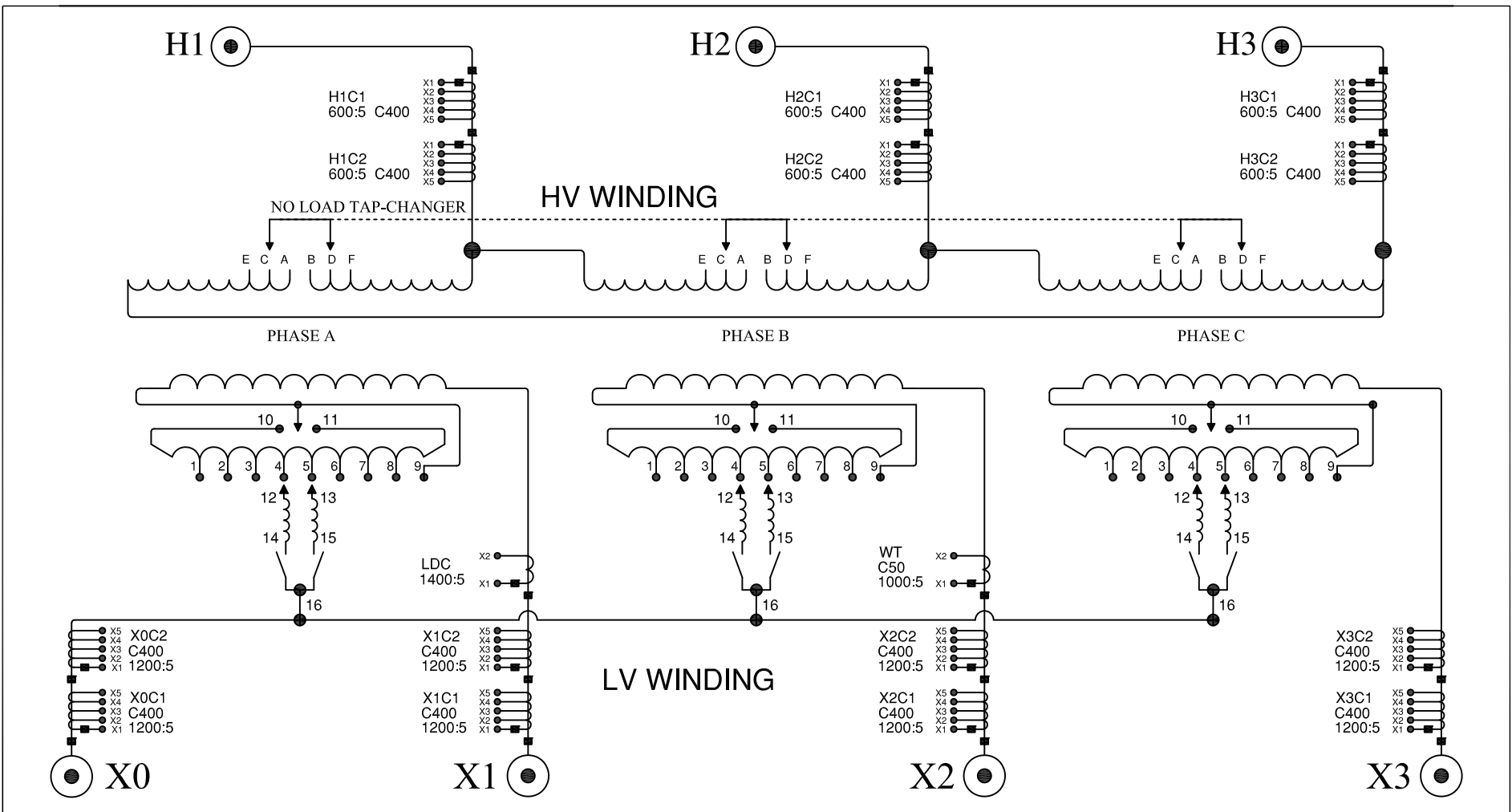
**APPROXIMATE WEIGHTS EXPRESSED IN U.S. POUNDS**

TOTAL --- 117355 lbs.  
 UNTANKING (CORE&COIL) --- 46180 lbs.  
 TANK AND FITTINGS --- 39000 lbs.  
 LTC TANK -- 150 GALS.      MAIN TANK -- 4140 GALS. --- 32175 lbs.



**LV CONNECTIONS**

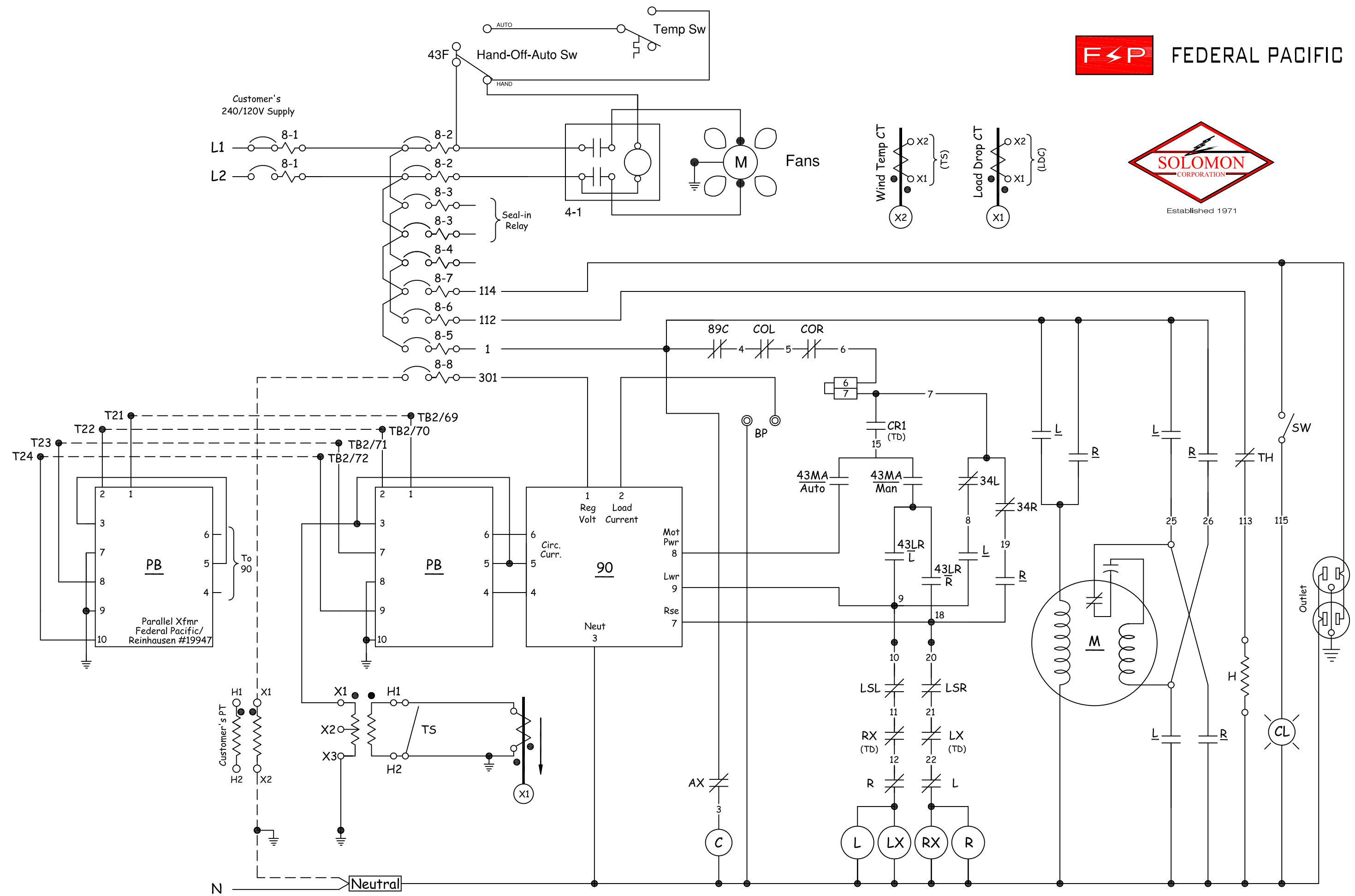
VOLTS L - L	AMPS 15000 KVA	MECHANISM		REVERSING SWITCH ON
		DIAL POS	CONTACTS ON	
13718	631.31	16	1 + 1	11
13640	634.92	15	2 + 1	
13562	638.57	14	2 + 2	
13466	643.12	13	3 + 2	
13406	646.00	12	3 + 3	
13328	649.78	11	4 + 3	
13250	653.60	10	4 + 4	
13172	657.47	9	5 + 4	
13094	661.39	8	5 + 5	
13016	665.35	7	6 + 5	
12938	669.37	6	6 + 6	
12861	673.37	5	7 + 6	
12783	677.48	4	7 + 7	
12705	681.64	3	8 + 7	
12627	685.85	2	8 + 8	
12549	690.12	1	9 + 8	
12470		N	9	
12393		1	9 + 1	10
12315		2	1 + 1	
12237		3	1 + 2	
12159		4	2 + 2	
12081		5	2 + 3	
12003		6	3 + 3	
11925		7	3 + 4	
11847		8	4 + 4	
11769		9	4 + 5	
11691		10	5 + 5	
11613		11	5 + 6	
11535		12	6 + 6	
11458		13	6 + 7	
11380		14	7 + 7	
11302		15	7 + 8	
11224		16	8 + 8	



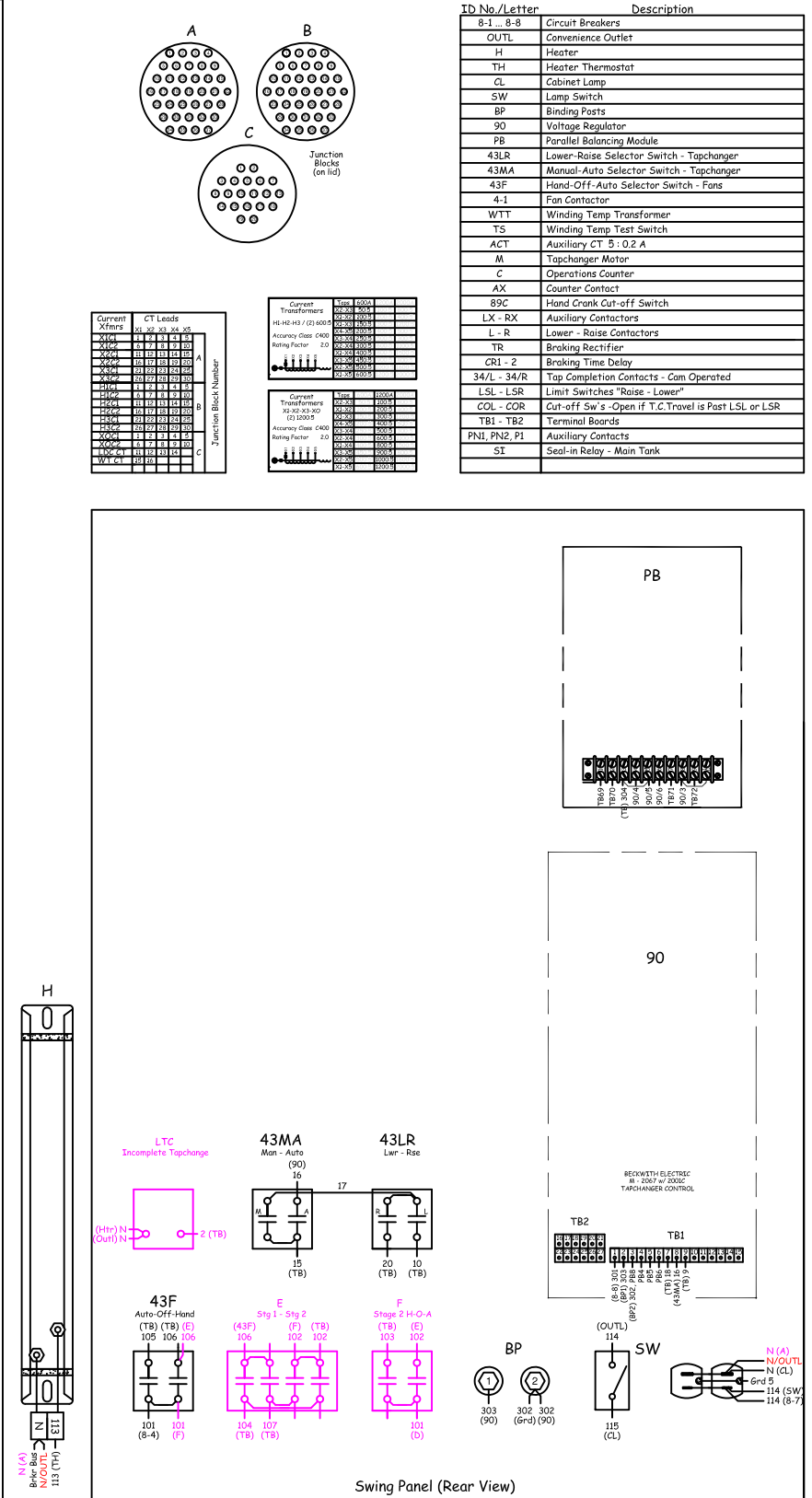
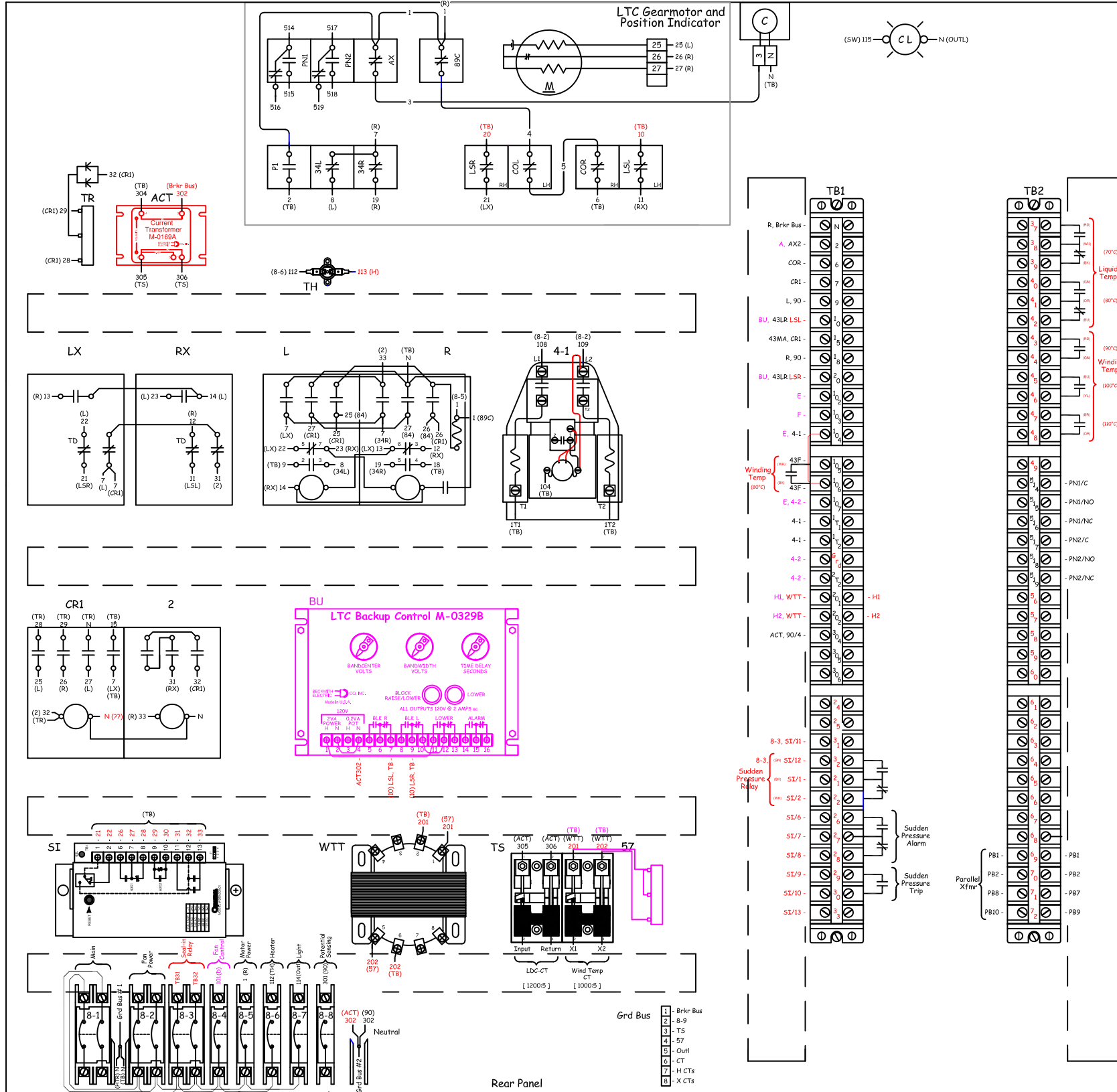
THE 25°C LIQUID LEVEL IS 14.5 INCHES BELOW TOP OF HIGHEST MANHOLE FLANGE.  
 LIQUID LEVEL CHANGES 1.1 INCHES FOR EACH 10°C CHANGE IN AVERAGE LIQUID TEMPERATURE.  
 THE MAXIMUM OPERATING PRESSURES OF LIQUID PRESERVATION SYSTEM 8.0 PSI POS. TO 8.0 PSI NEG.  
 FILLED WITH NON-PCB OIL AT TIME OF REMANUFACTURE. TANK IS SUITABLE FOR 14.7 LBS VACUUM FILLING.

ORIGINAL MFG. - FEDERAL PACIFIC  
 LTC MECHANISM - F.P. TYPE TC25E 1977  
 DATE OF REMFG. - JULY 2005  
 MADE IN U.S.A.

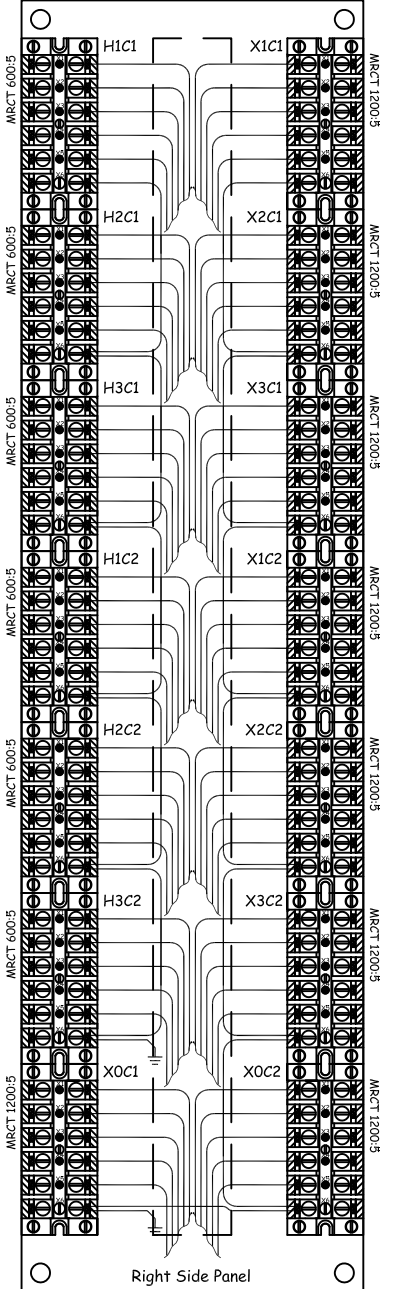
\* THE TRANSFORMER MUST NOT BE ENERGIZED FROM ANY VOLTAGE SOURCE WHEN HV TAP CHANGER IS OPERATED.  
 LDC-CT IS 1400:5 AMP FOR USE WITH LOAD TAP CHANGER. ■ = POLARITY MARK



DATE	REVISIONS/NOTES	DATE	REVISIONS/NOTES

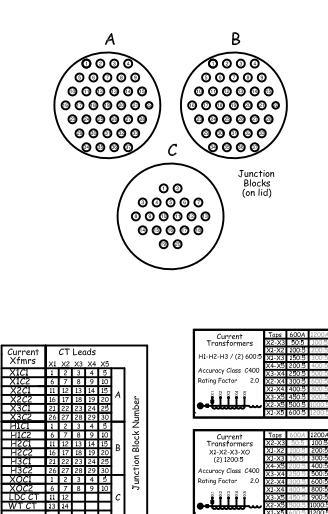
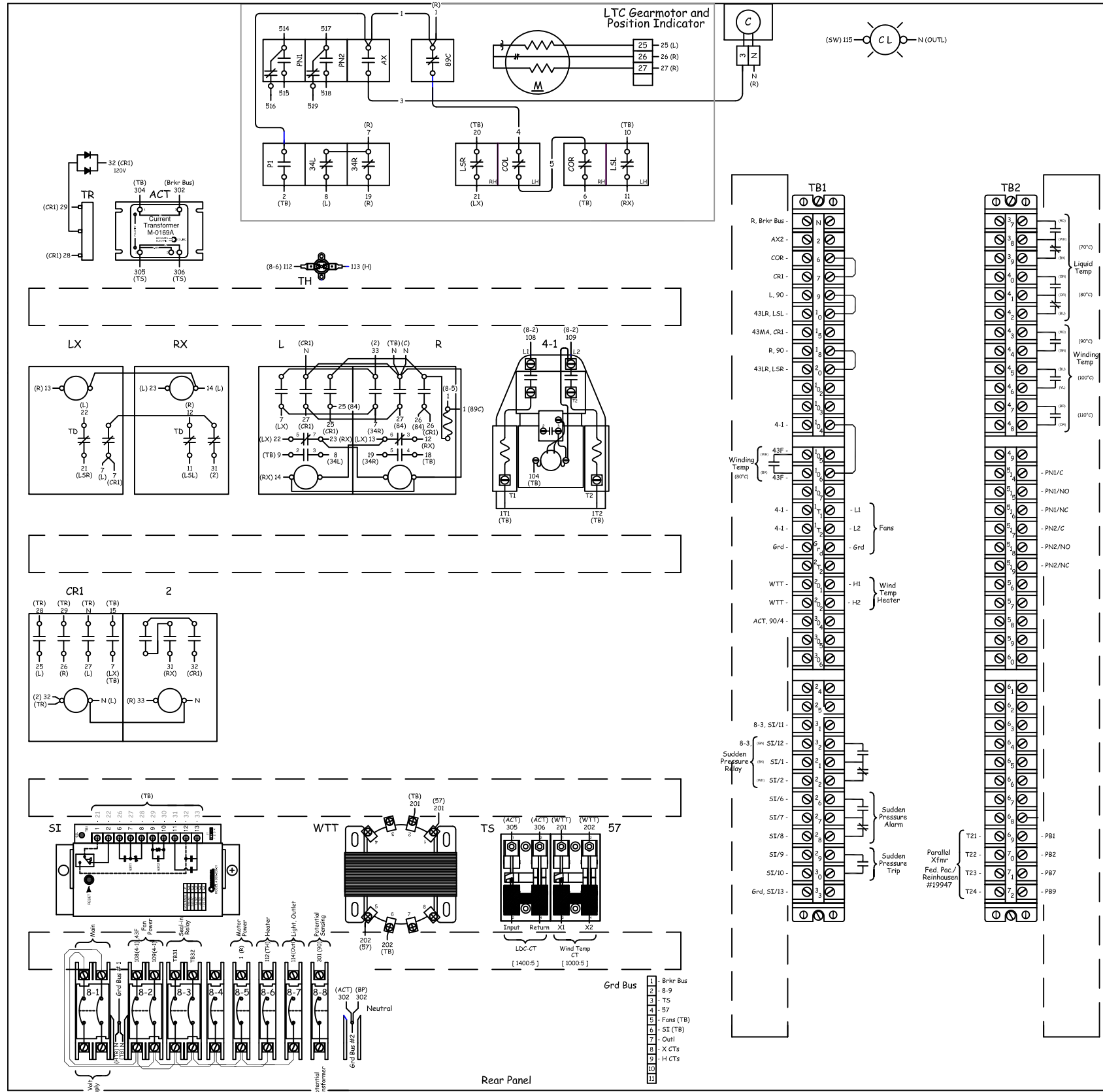


ID No./Letter	Description
8-1 ... 8-8	Circuit Breakers
OUTL	Convenience Outlet
H	Heater
TH	Heater Thermostat
CL	Cabinet Lamp
SW	Lamp Switch
BP	Binding Posts
90	Voltage Regulator
PB	Parallel Balancing Module
43LR	Lower-Raise Selector Switch - Tapchanger
43MA	Manual-Auto Selector Switch - Tapchanger
43F	Hand-Off-Auto Selector Switch - Fans
4-1	Fan Contactor
WTT	Winding Temp Transformer
TS	Winding Temp Test Switch
ACT	Auxiliary CT B: 0.2 A
M	Tapchanger Motor
C	Operations Counter
AX	Counter Contact
89C	Hand Crank Cut-off Switch
LX - RX	Auxiliary Contactors
L - R	Lower - Raise Contactors
TR	Braking Rectifier
CR1 - 2	Braking Time Delay
34/L - 34/R	Tap Completion Contacts - Cam Operated
LSL - LSR	Limit Switches "Raise - Lower"
COL - COR	Cut-off Sw's - Open if T.C. Travel is Past LSL or LSR
TB1 - TB2	Terminal Boards
PN1, PN2, P1	Auxiliary Contacts
SI	Seal-in Relay - Main Tank

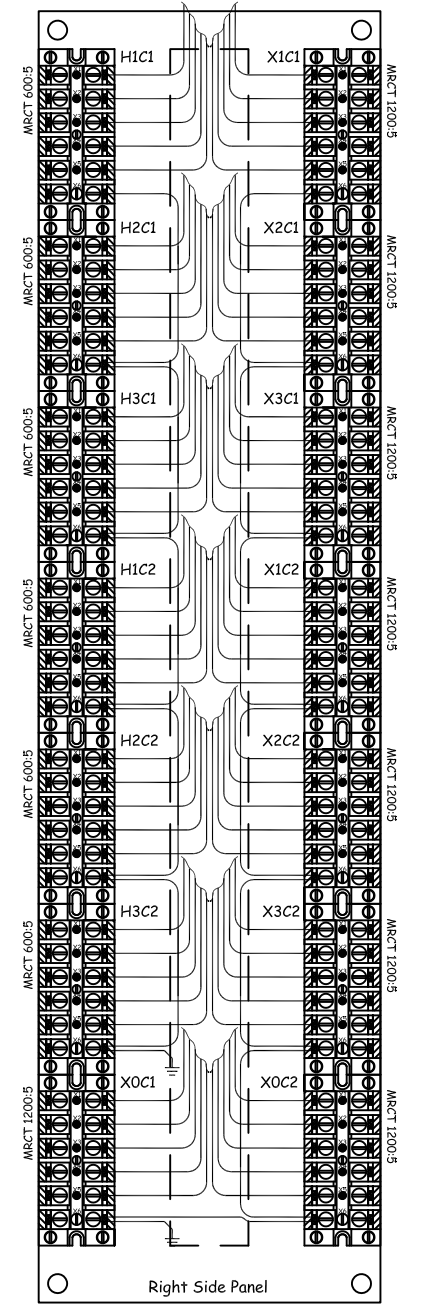
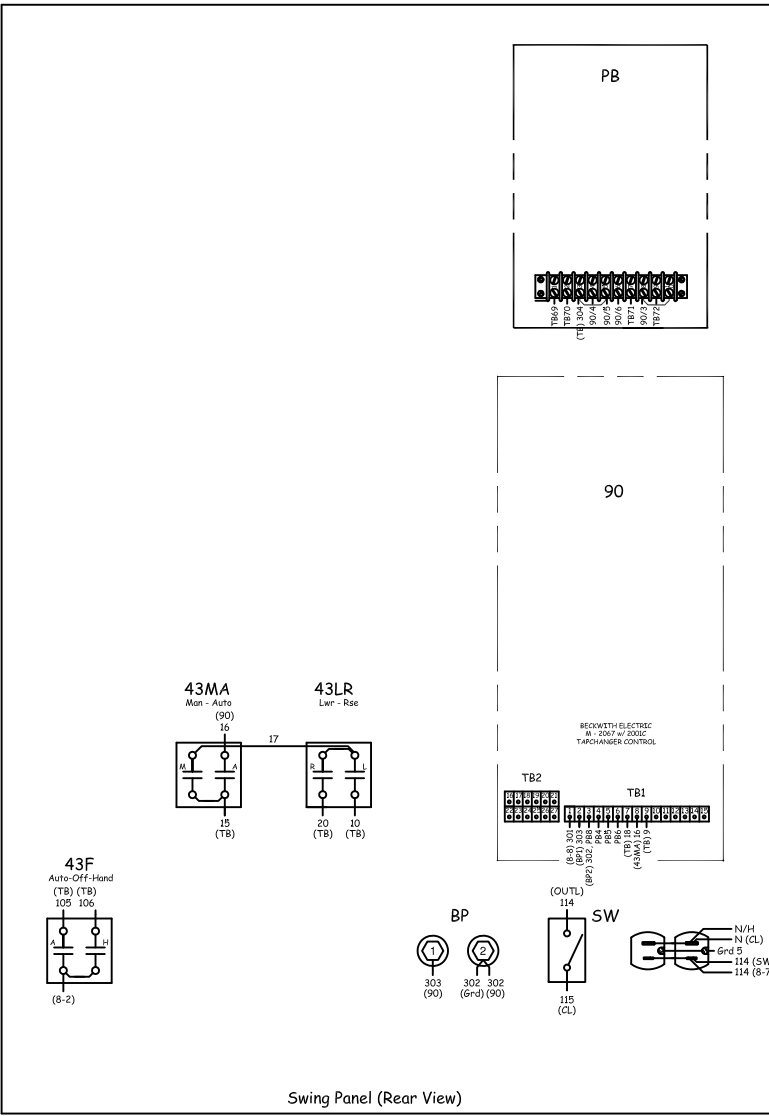


DATE	REVISIONS/NOTES	DATE	REVISIONS/NOTES

DRAWING TYPE:	<b>Detail Wiring</b>	DRAWING DESCRIPTION:	<b>LTC Control</b>
DESIGN, DRAWN & WIRED BY:	<b>Leon Jeardoe</b>	DATE:	<b>7/21/05</b>

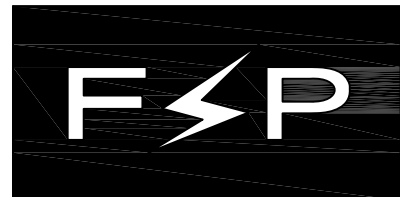


8-1 ... 8-8	Circuit Breakers
OUTL	Convenience Outlet
H	Heater
TH	Heater Thermostat
CL	Cabinet Lamp
SW	Lamp Switch
BP	Binding Posts
90	Voltage Regulator
PB	Parallel Balancing Module
43LR	Lower-Raise Selector Switch - Tapchanger
43MA	Manual-Auto Selector Switch - Tapchanger
43F	Hand-Off-Auto Selector Switch - Fans
4-1	Fan Contactor
WTT	Winding Temp Transformer
TS	Winding Temp Test Switch
ACT	Auxiliary CT B: 0.2 A
M	Tapchanger Motor
C	Operations Counter
AX	Counter Contact
89C	Hand Crank Cut-off Switch
LX - RX	Auxiliary Contactors
L - R	Lower - Raise Contactors
TR	Braking Rectifier
CR1 - 2	Braking Time Delay
34/L - 34/R	Tap Completion Contacts - Cam Operated
LSL - LSR	Limit Switches "Raise - Lower"
COL - COR	Cut-off Sw 's - Open if T.C.Travel is Past LSL or LSR
TB1 - TB2	Terminal Boards
PN1, PN2, P1	Auxiliary Contacts
SI	Seal-in Relay - Main Tank



DATE	REVISIONS/NOTES	DATE	REVISIONS/NOTES
	"TC 25 E" 1977		

DRAWING TYPE:	<i>Detail Wiring</i>	DRAWING DESCRIPTION:	<i>Control Wiring</i>
DESIGN, DRAWN & WIRED BY:	<i>Leon Jeardoe</i>	DATE:	<i>8/03/05</i>
		<b>Bridger Coal</b> 15000 KVA # 19955	



FEDERAL PACIFIC



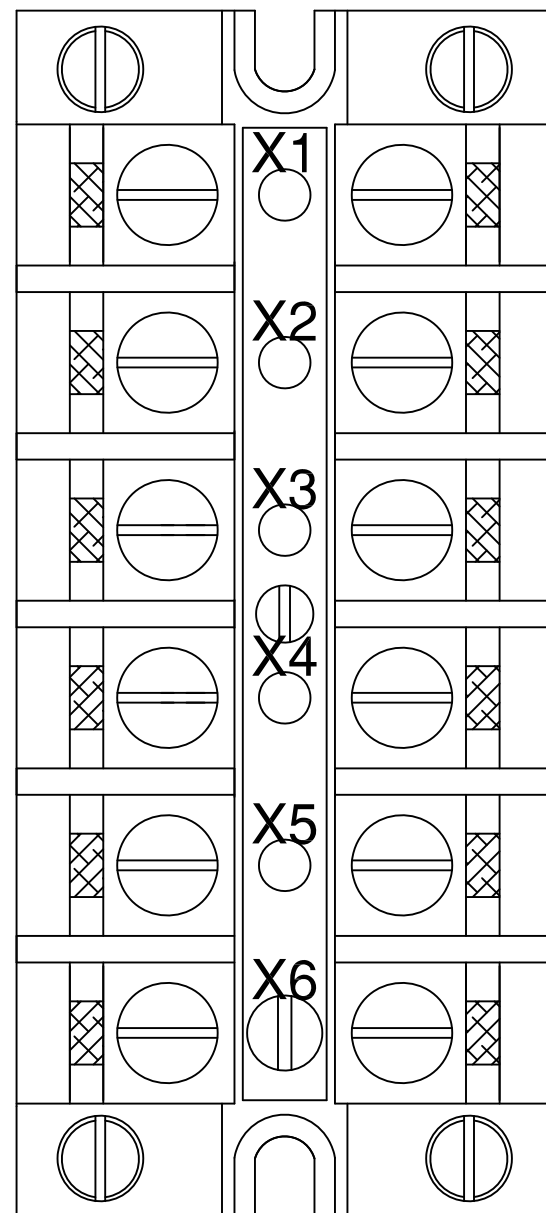
Established 1971

Remanufactured for

*Bridger Coal Company*

July 2005

Standard CT Hookup

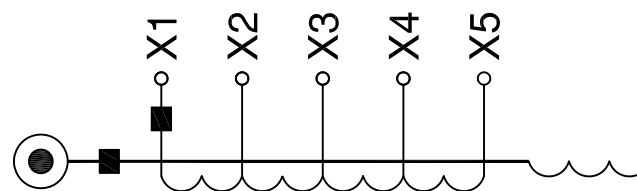


**Current Transformers**

H1-H2-H3 / (2) 600:5

Accuracy Class C400

Rating Factor 2.0



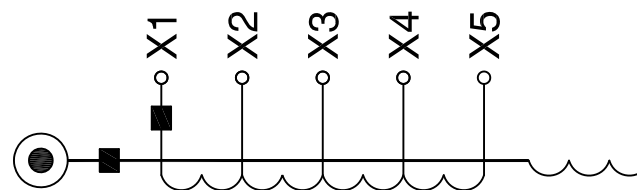
Taps	600A	1200A	2000A
X2-X3	50:5	100:5	800:5
X1-X2	100:5	200:5	400:5
X1-X3	150:5	300:5	1200:5
X4-X5	200:5	400:5	500:5
X3-X4	250:5	500:5	300:5
X2-X4	300:5	600:5	1100:5
X1-X4	400:5	800:5	1500:5
X3-X5	450:5	900:5	800:5
X2-X5	500:5	1000:5	1600:5
X1-X5	600:5	1200:5	2000:5

**Current Transformers**

X1-X2-X3-XO  
(2) 1200:5

Accuracy Class C400

Rating Factor 2.0



Taps	600A	1200A	2000A
X2-X3	50:5	100:5	800:5
X1-X2	100:5	200:5	400:5
X1-X3	150:5	300:5	1200:5
X4-X5	200:5	400:5	500:5
X3-X4	250:5	500:5	300:5
X2-X4	300:5	600:5	1100:5
X1-X4	400:5	800:5	1500:5
X3-X5	450:5	900:5	800:5
X2-X5	500:5	1000:5	1600:5
X1-X5	600:5	1200:5	2000:5

ATTACHMENT B

to

PacifiCorp Notice of Affiliate Transaction



## BILL OF SALE

KNOW ALL MEN BY THESE PRESENTS: Bridger Coal Company, a Wyoming joint venture company (“**Seller**”), for and in consideration of the sum of \$355,950.00 and other good and valuable consideration (the “**Purchase Price**”), provided by PacifiCorp (“**Purchaser**”), the receipt of which is hereby acknowledged, does hereby sell, assign, transfer, set over, deliver and convey to Purchaser all of its right, title and interest in the Transformers described on Annex A attached hereto unto Purchaser and to Purchaser’s successors and assigns forever, along with, whatever claims and rights Seller may have against the manufacturer and/or supplier of the Transformers, including, but not limited to, all warranties and representations.

Purchaser is purchasing the Transformers pursuant to the Purchase and Sale Agreement, dated as of October 24, 2022, by and between Purchaser and Seller (the “**PSA**”). Seller represents and warrants to Purchaser and its successors and assigns that (i) Purchaser will acquire by the terms of this Bill of Sale good and marketable title to the Transformers free from all Liens (other than Permitted Liens) and (2) Seller has the full, legal and beneficial title to the Transformers, as well as the right to sell and convey the Transformers. Seller agrees with Purchaser and its successors and assigns that Seller will warrant and forever defend such title so conveyed against all claims and demands whatsoever. All terms used herein which are not otherwise defined herein shall have the meaning ascribed to them in the PSA, and the rules of usage set forth therein shall apply hereto.

THIS BILL OF SALE SHALL IN ALL RESPECTS BE GOVERNED BY AND CONSTRUED IN ACCORDANCE WITH THE LAWS OF THE STATE OF WYOMING.

*[Remainder of page intentionally left blank]*

IN WITNESS WHEREOF, Purchaser and Seller have executed and delivered this Bill of Sale this 24 day of October 2022.

PURCHASER:

SELLER:

PACIFICORP

BRIDGER COAL COMPANY

By: Russell Updike  
Name: Russell Updike  
Title: Director

By: Jon C. Brown  
Name: Jon C. Brown  
Title: General Manager

ATTACHMENT C

to

PacifiCorp Notice of Affiliate Transaction

# Invoice

## BRIDGER COAL COMPANY

932 Nine Mile Rd  
P. O. Box 68  
Point of Rocks, WY 82942

Ph: (307) 922-7600  
Fax: (307) 362-5330

Date: 24-Oct-22  
Invoice #: **18518**  
Release No.  
Terms: Due upon Receipt  
WO: 10079468  
FOB:

Bill To:

Rocky Mountain Power  
Attn: Alex Vaz  
1407 W North Temple, Suite 270  
Salt Lake City, UT 84116

Ship To:

Rocky Mountain Power  
Pick up at minesite

Re:

Ln#	DESCRIPTION	RATE	QUANTITY	AMOUNT
1	MagneTek Viking Power Transformer Class: OA/FA 3-phase 60 HZ Ser. No. A0223V  General Electric Transformer Class: OA/FA 3-phase 60 HZ Ser. No. H880573A  Sold as is no implied or express warranty.			339,000.00
Total Amount				\$ 339,000.00
5% Sales Tax				\$ 16,950.00
Shipping				
<b>Total Invoice</b>				<b>\$ 355,950.00</b>
<b>Balance Due</b>				<b>\$ 355,950.00</b>

Message

Wiring Instructions:  
Bank: JP Morgan Chase  
Address: Chicago, IL  
ABA: 021000021  
Account Number: 09-49558  
Account Name: Bridger Coal Company  
Beneficiary Address: 932 Nine Mile Road, Point of Rocks, WY 82942