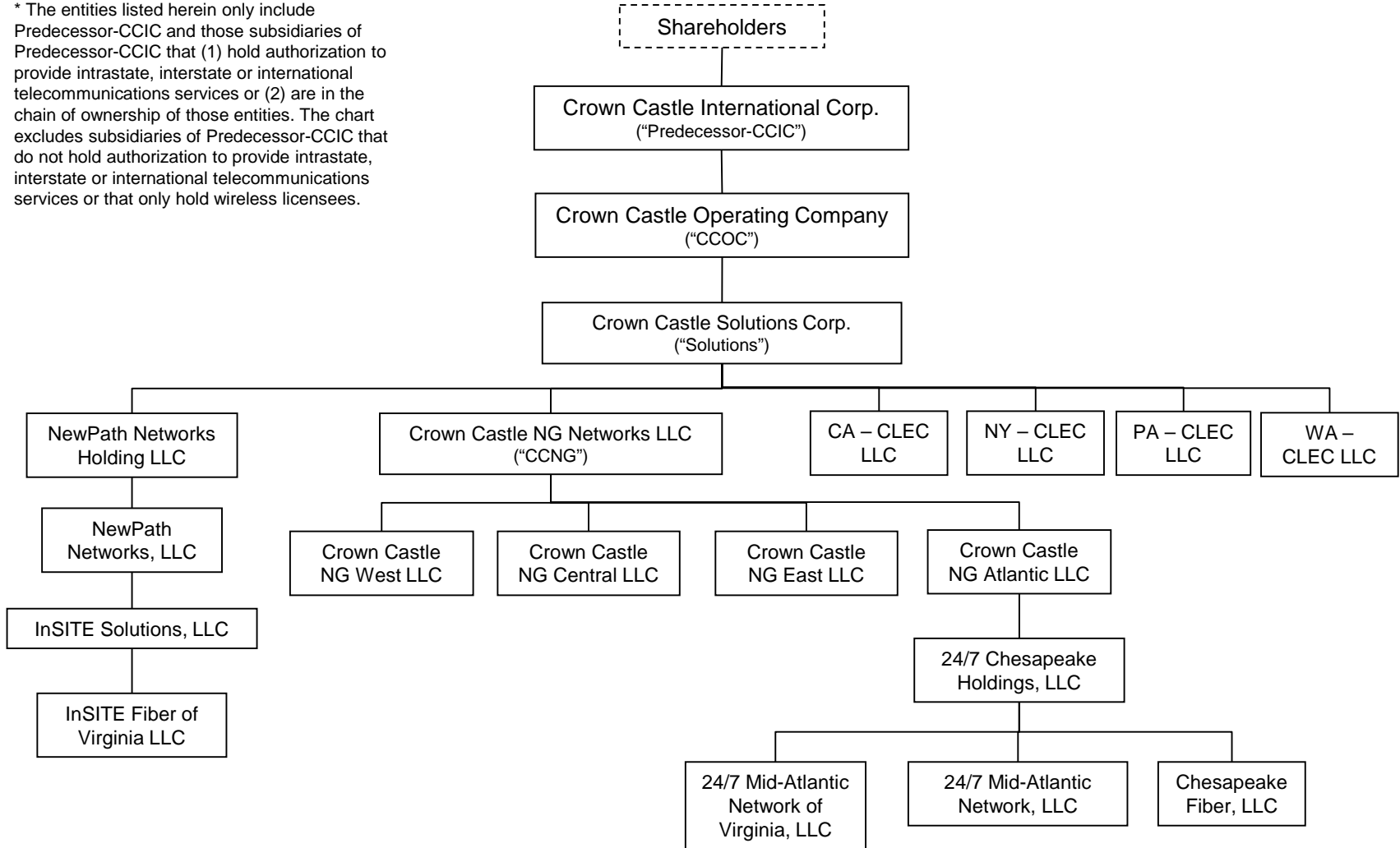


## Pre-REIT Transaction Corporate Structure

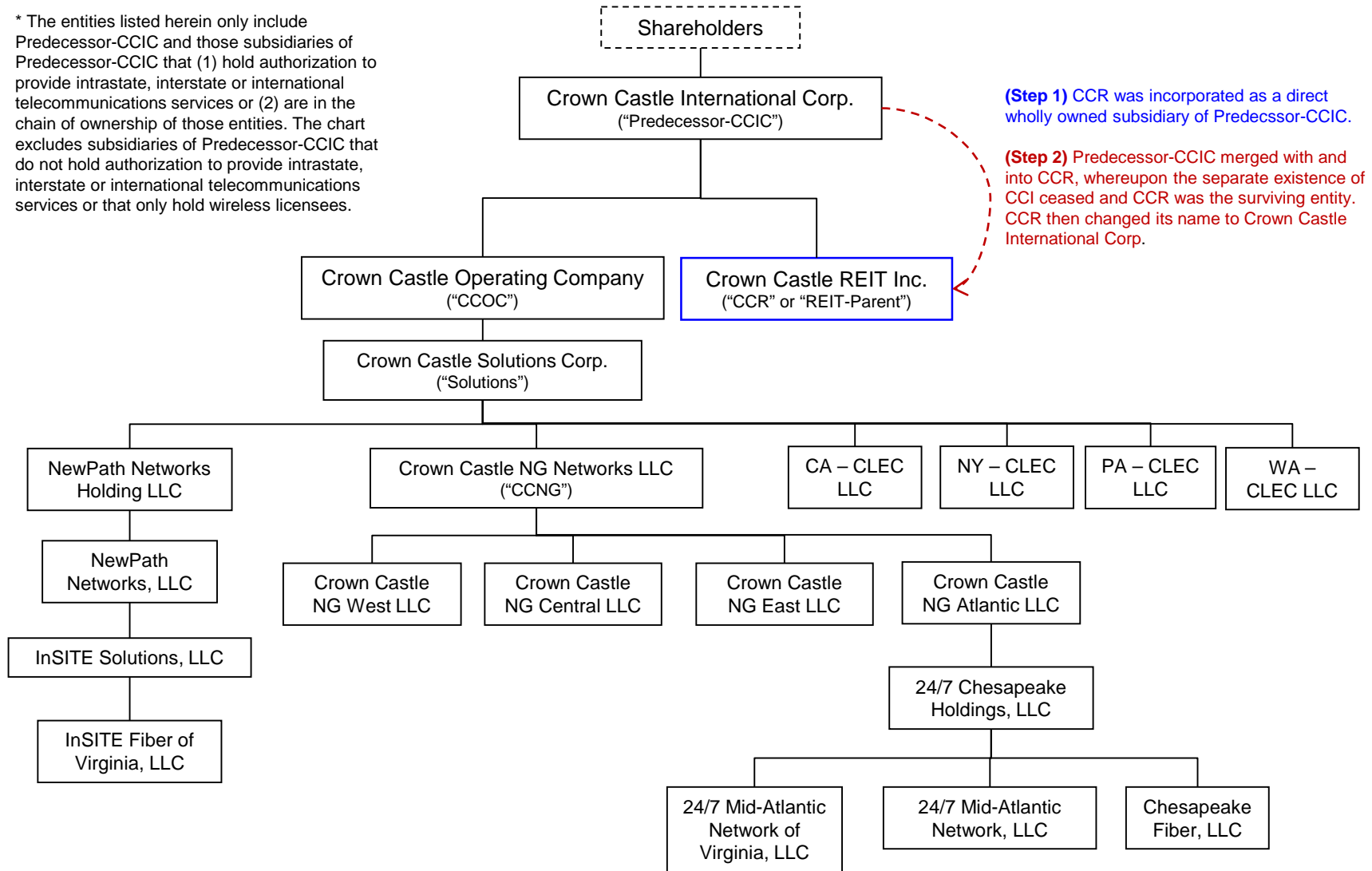
\* The entities listed herein only include Predecessor-CCIC and those subsidiaries of Predecessor-CCIC that (1) hold authorization to provide intrastate, interstate or international telecommunications services or (2) are in the chain of ownership of those entities. The chart excludes subsidiaries of Predecessor-CCIC that do not hold authorization to provide intrastate, interstate or international telecommunications services or that only hold wireless licenses.



Unless otherwise indicated all ownership percentages are 100%.

# REIT Transaction

\* The entities listed herein only include Predecessor-CCIC and those subsidiaries of Predecessor-CCIC that (1) hold authorization to provide intrastate, interstate or international telecommunications services or (2) are in the chain of ownership of those entities. The chart excludes subsidiaries of Predecessor-CCIC that do not hold authorization to provide intrastate, interstate or international telecommunications services or that only hold wireless licenses.



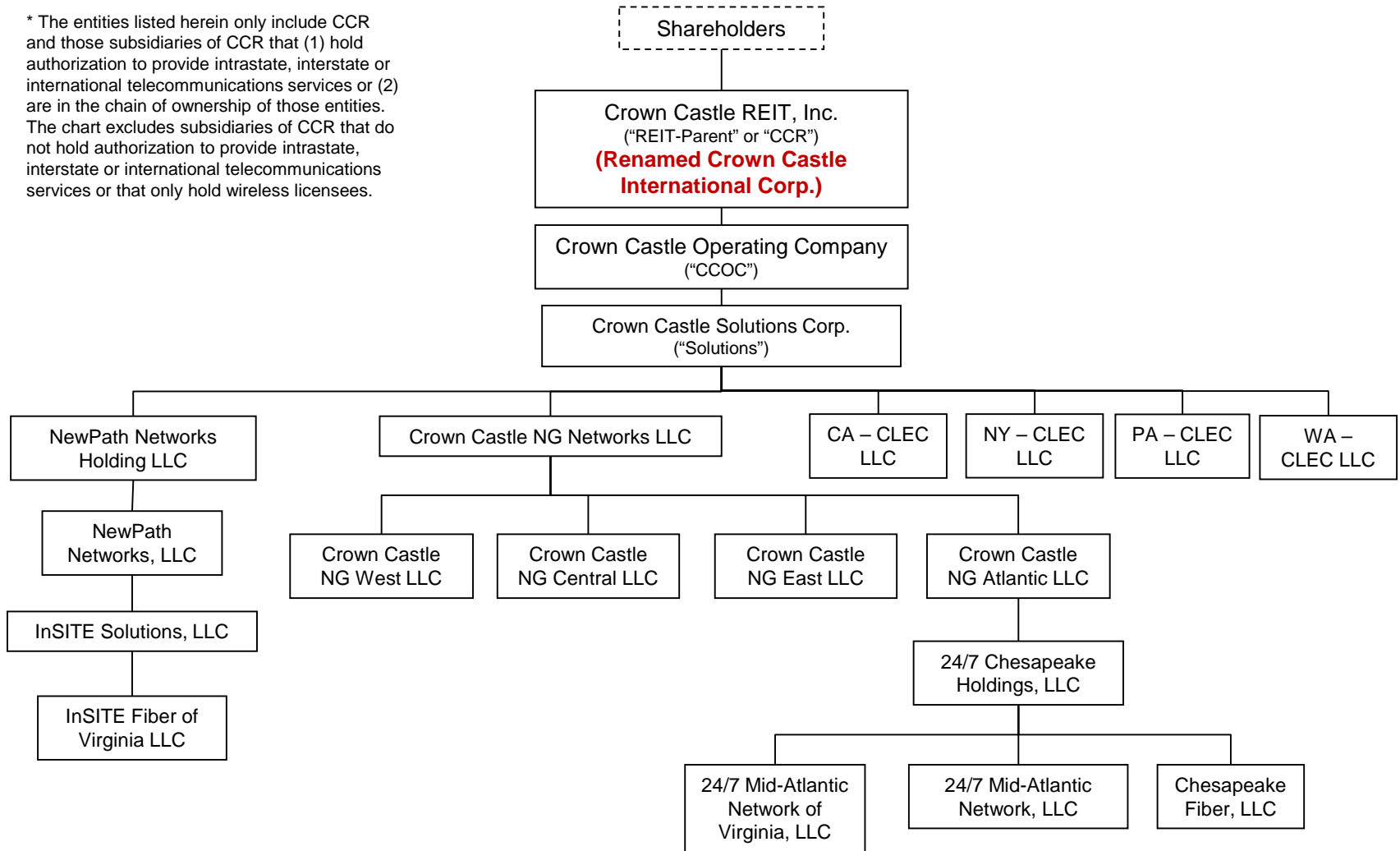
**(Step 1)** CCR was incorporated as a direct wholly owned subsidiary of Predecessor-CCIC.

**(Step 2)** Predecessor-CCIC merged with and into CCR, whereupon the separate existence of CCI ceased and CCR was the surviving entity. CCR then changed its name to Crown Castle International Corp.

Unless otherwise indicated all ownership percentages are 100%.

## Current Corporate Structure

\* The entities listed herein only include CCR and those subsidiaries of CCR that (1) hold authorization to provide intrastate, interstate or international telecommunications services or (2) are in the chain of ownership of those entities. The chart excludes subsidiaries of CCR that do not hold authorization to provide intrastate, interstate or international telecommunications services or that only hold wireless licenses.



Unless otherwise indicated all ownership percentages are 100%.