



March 16, 2017
Via Overnight Delivery
& E-Mail

Secretary
Utah Public Service Commission
Heber M. Wells Building
160 East 300 South, Suite 400
Salt Lake City, UT 84111

RE: Broadvox-CLEC, LLC
Utah Price List No. 1 – Access Revision

Dear Sir or Madam:

Enclosed for filing please find the original and two (2) copies of the above referenced tariff filing submitted on behalf of Broadvox-CLEC, LLC. The purpose of this filing is to revise several Switched Access diagrams and its accompanying language. The Company respectfully requests an effective date for this filing of March 22, 2017.

The following tariff pages are included with this filing:

2 nd Revised Page No. 1	Updates Check Sheet
1 st Revised Page Nos. 60-63	Revises diagrams and language

Please acknowledge receipt of this filing by date-stamping the extra copy of this cover letter and returning it to me in the self-addressed, stamped envelope provided for that purpose.

Any questions you may have regarding this filing should be directed to my attention at 407-740-3006 or via email to croesel@tminc.com. Thank you for your assistance in this matter.

Sincerely,

Carey Roesel
Consultant to Broadvox-CLEC, LLC

cc: Mary Buley - Broadvox
Utah PSC (E-Mail)
file: Broadvox - Utah - Access
tms: UTa1701

Enclosures
CR/cc

ACCESS SERVICES

CHECK SHEET

Pages of this tariff, as indicated below, are effective as of the date shown at the bottom of the respective pages. Original and revised pages, as named below, comprise all changes from the original tariff and are currently in effect as of the date on the bottom of this page.

PAGE	REVISION		PAGE	REVISION	PAGE	REVISION	
Title	Original		26	Original	51	Original	
1	2 nd Revised	*	27	Original	52	Original	
2	Original		28	Original	53	Original	
3	Original		29	Original	54	Original	
4	Original		30	Original	55	Original	
5	Original		31	Original	56	Original	
6	Original		32	Original	57	1 st Revised	
7	Original		33	Original	58	1 st Revised	
8	Original		34	Original	59	Original	
9	Original		35	Original	60	1 st Revised	*
10	Original		36	Original	61	1 st Revised	*
11	Original		37	Original	62	1 st Revised	*
12	Original		38	Original	63	1 st Revised	*
13	Original		39	Original	64	Original	
14	Original		40	Original	65	Original	
15	Original		41	Original	66	Original	
16	Original		42	Original	67	Original	
17	Original		43	Original	68	1 st Revised	
18	Original		44	Original	69	1 st Revised	
19	Original		45	Original	70	Original	
20	Original		46	Original	71	Original	
21	Original		47	Original	72	Original	
22	Original		48	Original	73	Original	
23	Original		49	Original	74	Original	
24	Original		50	Original	75	Original	
25	Original						

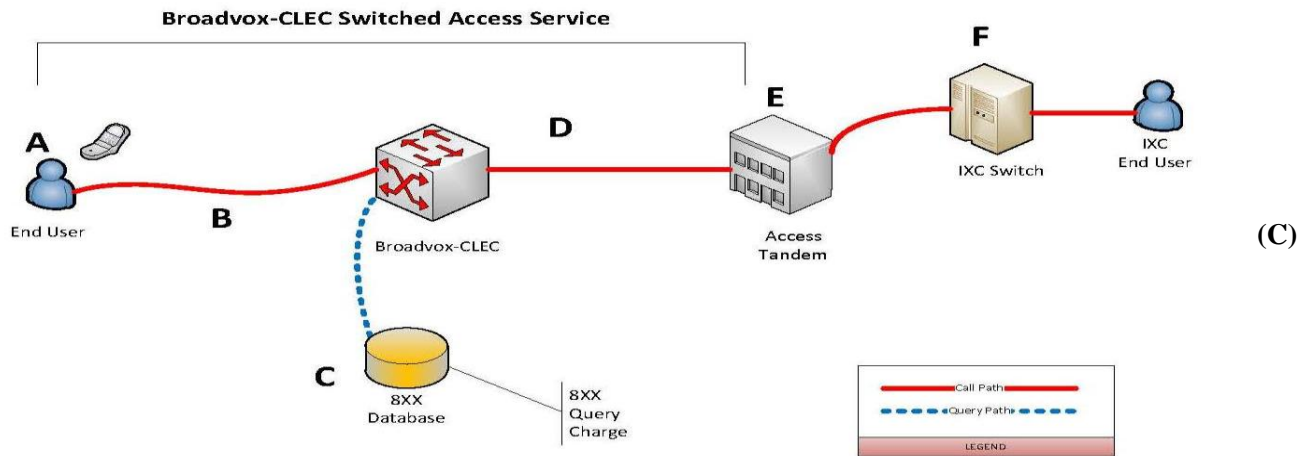
* - indicates those pages included with this filing

ACCESS SERVICES

SECTION 3 - SWITCHED ACCESS SERVICE, (CONT'D)

3.9 Call Flow Diagrams

Originating and Terminating Access – Indirect Connection; Broadvox - CLEC End User



Originating Call Flow

- A. Broadvox - CLEC's End User places a long distance call
- B. Call is routed to Broadvox - CLEC switch
- C. If 8XX call, Broadvox - CLEC switch looks up IXC that should receive the call
- D. Call is routed to Access Tandem over shared transport
- E. Tandem Provider routes call to IXC

Originating Charges

- Broadvox-CLEC charges IXC: Switched Access Service – Indirect Connection, which is comprised of Local Switching, Common Trunk Port, Tandem Switched Transport – Termination, Tandem Switched Transport – Facility, and 8XX query charges, as applicable
- Additional charges may apply per Tandem Provider tariff for functions performed by Tandem Provider

Terminating Call Flow

- F. IXC delivers terminating long distance call to Access Tandem for routing to Broadvox - CLEC's End User
- E. Access Tandem routes call over shared transport (D) to Broadvox - CLEC switch
- B. Call is routed to Broadvox - CLEC's End User(A)

Terminating Charges

- Broadvox-CLEC charges IXC: Switched Access Service – Indirect Connection, which is comprised of Local Switching, Common Trunk Port, Tandem Switched Transport – Termination, and Tandem Switched Transport – Facility
- Additional charges may apply per Tandem Provider tariff for functions performed by Tandem Provider

Issued: March 17, 2017

Issued by:
Mary Buley
Senior Regulatory Manager

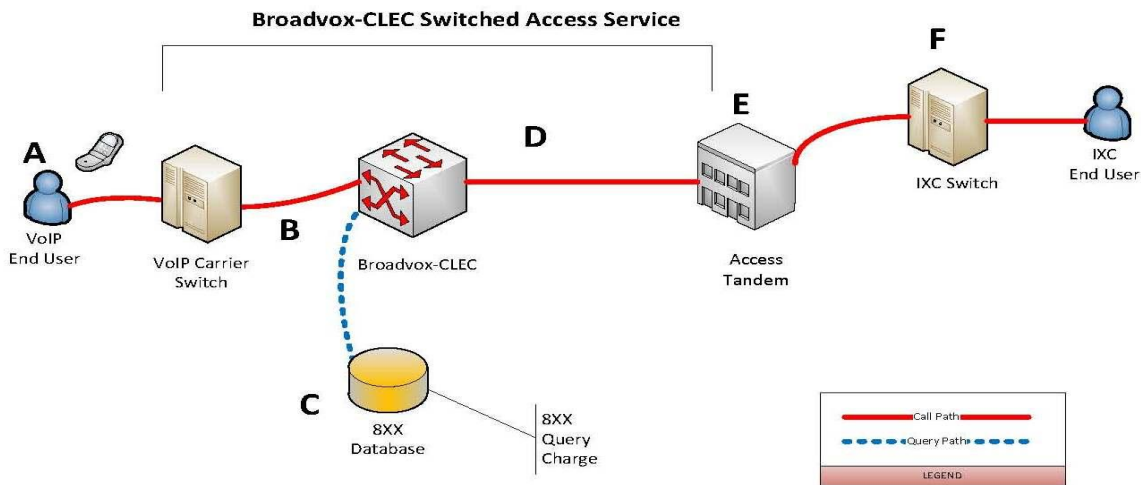
Effective: March 22, 2017

ACCESS SERVICES

SECTION 3 - SWITCHED ACCESS SERVICE, (CONT'D)

3.9 Call Flow Diagrams (Cont'd.)

Originating and Terminating Access – Indirect Connection; VoIP Carrier End User



(C)

Originating Call Flow

- A. VoIP End User places a long distance call that is routed to VoIP carrier switch
- B. VoIP carrier routes call to Broadvox-CLEC switch.
- C. If 8XX call, Broadvox-CLEC switch looks up IXC that should receive the call
- D. Call is routed to Access Tandem over Shared Transport
- E. Tandem Provider routes call to IXC

(C)

(C)

Originating Charges

- Broadvox-CLEC charges IXC: Switched Access Service – Indirect Connection, which is comprised of Local Switching, Common Trunk Port, Common Transport Multiplexing, Tandem Switching, Tandem Switched Transport – Termination, Tandem Switched Transport – Facility, and 8XX query charges, as applicable
- Additional charges may apply per Tandem Provider tariff for functions performed by Tandem Provider

(C)

(C)

Terminating Call Flow

- F. IXC delivers terminating long distance call to Access Tandem for routing to Broadvox-CLEC's telephone number
- E. Access Tandem routes call over shared transport (D) to Broadvox-CLEC switch
- B. Broadvox-CLEC routes the call to the VoIP carrier

(C)

(C)

Terminating Charges

- Broadvox-CLEC charges IXC (1) Switched Access Service – Indirect Connection, which is comprised of Local Switching, Common Trunk Port, Common Transport Multiplexing, Tandem Switching, Tandem Switched Transport – Termination, and Tandem Switched Transport – Facility
- Additional charges may apply per Tandem Provider tariff for functions performed by Tandem Provider

(C)

(C)

Issued: March 17, 2017

Issued by:
Mary Buley
Senior Regulatory Manager

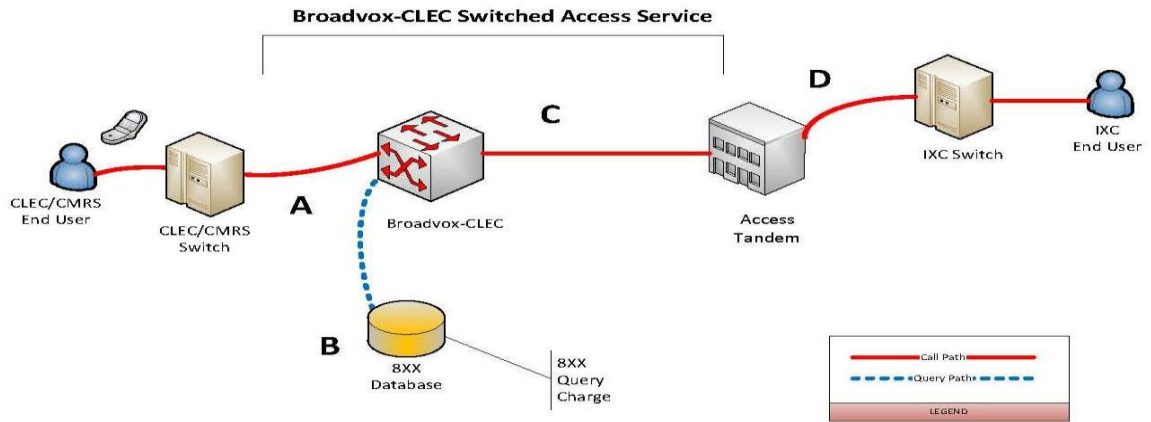
Effective: March 22, 2017

ACCESS SERVICES

SECTION 3 - SWITCHED ACCESS SERVICE, (CONT'D)

3.9 Call Flow Diagrams (Cont'd.)

Originating and Terminating Access – Indirect Connection; CLEC/CMRS Carrier End User



(C)

Originating Call Flow

- A. CLEC/CMRS End User places a long distance call that is routed to Broadvox - CLEC switch
- B. If 8XX call, Broadvox - CLEC switch looks up IXC that should receive the call
- C. Call is routed to Access Tandem over shared transport
- D. Tandem Provider routes call to IXC

(C)
(C)

Originating Charges

- Broadvox - CLEC charges IXC: Switched Access Service – Indirect Connection, which is comprised of: Common Trunk Port, Common Transport Multiplexing, Tandem Switching, Tandem Switched Transport – Termination, Tandem Switched Transport – Facility, and 8XX query charges, as applicable
- Additional charges may apply per Tandem Provider tariff for functions performed by Tandem Provider

(C)
(C)

Terminating Call Flow

- D. IXC delivers terminating long distance call to Access Tandem for routing to Broadvox - CLEC's telephone number
- C. Access Tandem routes call over shared transport to Broadvox - CLEC switch
- A. Broadvox - CLEC routes the call to the CLEC/CMRS carrier

(C)
(C)

Terminating Charges

- Broadvox - CLEC charges IXC: Switched Access Service – Indirect Connection, which is comprised of: Common Trunk Port, Common Transport Multiplexing, Tandem Switching, Tandem Switched Transport – Termination, and Tandem Switched Transport – Facility
- Additional charges may apply per Tandem Provider tariffs for functions performed by Tandem Provider

(C)
(C)

Issued: March 17, 2017

Issued by:
Mary Buley
Senior Regulatory Manager

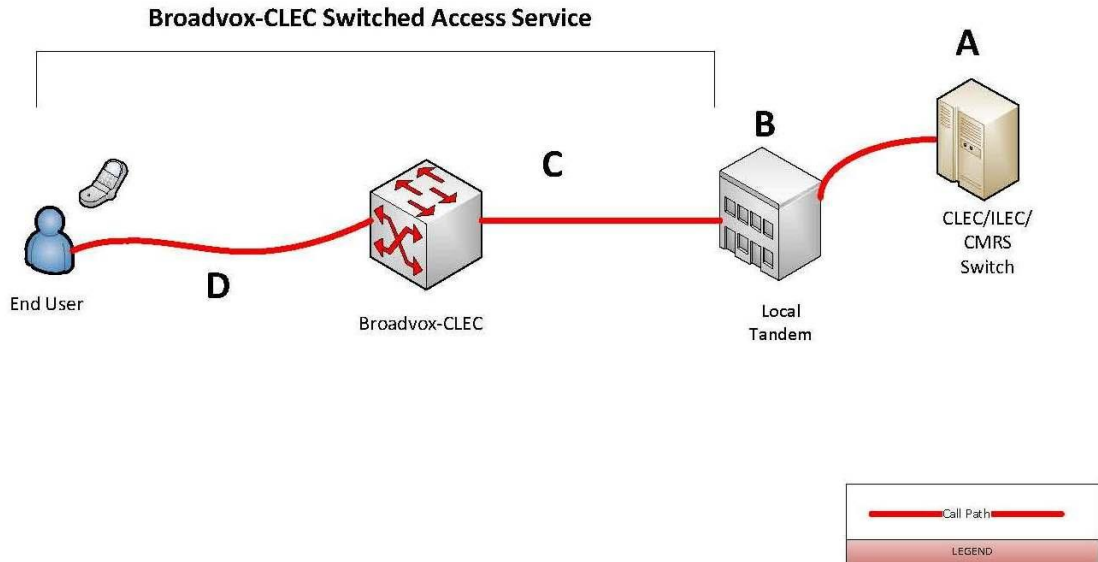
Effective: March 22, 2017

ACCESS SERVICES

SECTION 3 - SWITCHED ACCESS SERVICE, (CONT'D)

3.9 Call Flow Diagrams (Cont'd.)

**Terminating Access for Non-Local Jurisdiction over Local Tandem – Indirect Connection;
 CLEC/ILEC/CMRS Carrier End User**



(C)

Terminating Call Flow

- A. CLEC/ILEC/CMRS end user dials an Broadvox - CLEC Telephone Number
- B. CLEC/ILEC/CMRS routes the call to the Local Tandem (C)
- C. Local Tandem Provider switches the call to the Broadvox - CLEC's local trunk group (C)
- D. Call is routed across Shared Transport to the Broadvox - CLEC switch
- E. Broadvox - CLEC routes the call to the end user

Terminating Charges

- Broadvox - CLEC charges CLEC/ILEC/CMRS: Local Switching, Common Trunk Port, Common Transport Multiplexing, Tandem Switched Transport – Termination, and Tandem Switched Transport – Facility
- Additional charges may apply per Local Tandem Provider tariff for functions performed by Local Tandem Provider (C)